

# Occidental Petroleum

Project: Weld County, CO (UTM-NAD83)  
Site: 3N-67W-12 DB FARMS 40-12HZ  
Well: DB FARMS 12-1HZ  
Wellbore: OH  
Design: OH

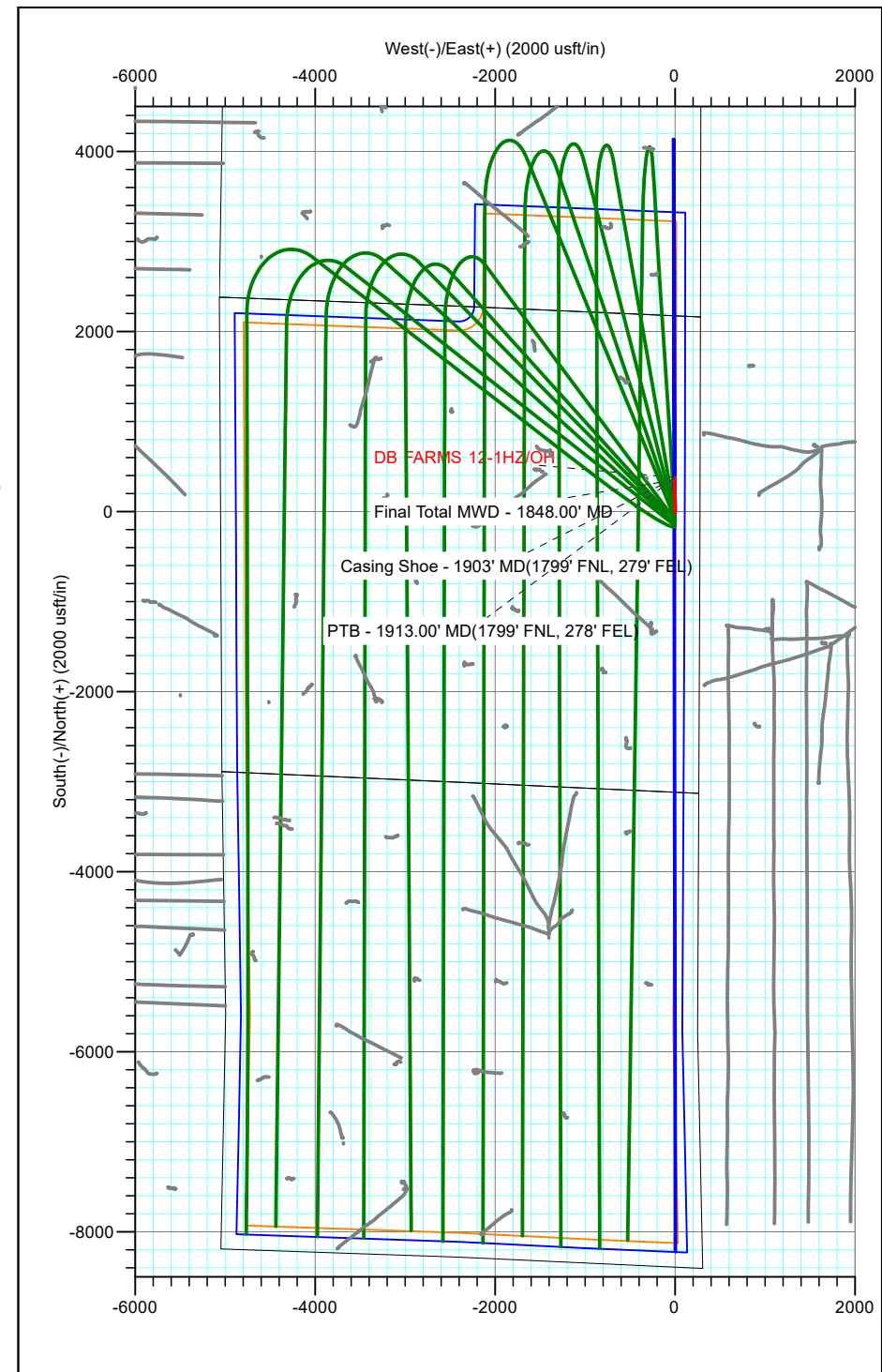


**ACTUAL LINE CALLS**  
**SHL: 2174' FNL, 279' FEL**  
**SHOE: 1799' FNL, 279' FEL**  
**TOE: 1799' FNL, 278' FEL**

## ANNOTATIONS

| MD      | Inc   | Azi  | TVD     | +N/-S  | +E/-W | Vsect   | Departure | Annotation                                  |
|---------|-------|------|---------|--------|-------|---------|-----------|---|
| 1848.00 | 24.52 | 3.86 | 1796.70 | 352.32 | -1.09 | -352.32 | 354.40    | Final Total MWD - 1848.00' MD               |
| 1903.00 | 24.52 | 3.86 | 1846.74 | 375.09 | 0.45  | -375.09 | 377.22    | Casing Shoe - 1903' MD(1799' FNL, 279' FEL) |
| 1913.00 | 24.52 | 3.86 | 1855.84 | 379.24 | 0.73  | -379.23 | 381.37    | PTB - 1913.00' MD(1799' FNL, 278' FEL)      |

PROJECT DETAILS: Weld County, CO (UTM-NAD83)  
Geodetic System: Universal Transverse Mercator (US Survey Feet)  
Datum: North American Datum 1983  
Ellipsoid: GRS 1980  
Zone: Zone 13N (108 W to 102 W)



**TOTAL DIRECTIONAL SERVICES LLC**

Design: OH (DB FARMS 12-1HZ/OH)  
3N-67W-12 DB FARMS 40-12HZ  
Created By: Bethany Ball Date: 10:54, April 29 2022  
Date: \_\_\_\_\_  
Approved: \_\_\_\_\_ Date: \_\_\_\_\_

Occidental Petroleum

Project: Weld County, CO (UTM-NAD83)  
Site: 3N-67W-12 DB FARMS 40-12HZ  
Well: DB FARMS 12-1HZ  
Wellbore: OH  
Design: OH

PROJECT DETAILS: Weld County, CO (UTM-NAD83)

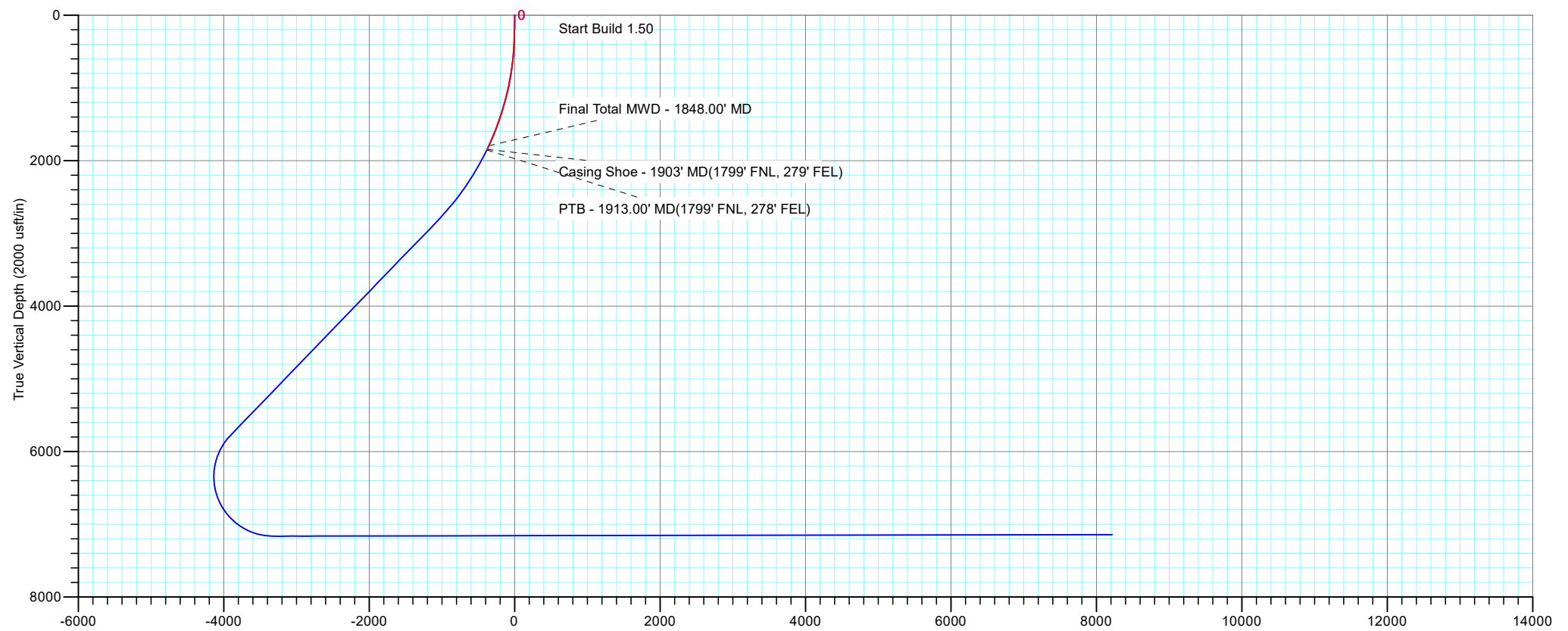
Geodetic System: Universal Transverse Mercator (US Survey Feet)  
Datum: North American Datum 1983  
Ellipsoid: GRS 1980  
Zone: Zone 13N (108 W to 102 W)

Ground Level



ACTUAL LINE CALLS  
SHL: 2174' FNL, 279' FEL  
SHOE: 1799' FNL, 279' FEL  
TOE: 1799' FNL, 278' FEL

| ANNOTATIONS |       |      |         |        |       |         |           |   |
|-------------|-------|------|---------|--------|-------|---------|-----------|---|
| MD          | Inc   | Azi  | TVD     | +N/-S  | +E/-W | VSect   | Departure | Annotation                                  |
| 1848.00     | 24.52 | 3.86 | 1796.70 | 352.32 | -1.09 | -352.32 | 354.40    | Final Total MWD - 1848.00' MD               |
| 1903.00     | 24.52 | 3.86 | 1846.74 | 375.09 | 0.45  | -375.09 | 377.22    | Casing Shoe - 1903' MD(1799' FNL, 279' FEL) |
| 1913.00     | 24.52 | 3.86 | 1855.84 | 379.24 | 0.73  | -379.23 | 381.37    | PTB - 1913.00' MD(1799' FNL, 278' FEL)      |



# **Occidental Petroleum**

**Weld County, CO (UTM-NAD83)**

**3N-67W-12 DB FARMS 40-12HZ**

**DB FARMS 12-1HZ - Slot DB FARMS 12-1HZ**

**OH**

**Design: OH**

## **Standard Survey Report**

**29 April, 2022**

## Survey Report

|                  |                             |                                     |   |
|------------------|-----------------------------|-------------------------------------|---|
| <b>Company:</b>  | Occidental Petroleum        | <b>Local Co-ordinate Reference:</b> | Well DB FARMS 12-1HZ - Slot DB FARMS 12-1HZ |
| <b>Project:</b>  | Weld County, CO (UTM-NAD83) | <b>TVD Reference:</b>               | GE 4793 + 5 @ 4798.00usft (Ikon 12)         |
| <b>Site:</b>     | 3N-67W-12 DB FARMS 40-12HZ  | <b>MD Reference:</b>                | GE 4793 + 5 @ 4798.00usft (Ikon 12)         |
| <b>Well:</b>     | DB FARMS 12-1HZ             | <b>North Reference:</b>             | True  |
| <b>Wellbore:</b> | OH                          | <b>Survey Calculation Method:</b>   | Minimum Curvature                           |
| <b>Design:</b>   | OH                          | <b>Database:</b>                    | EDM 5000.1 Single User Db                   |

|                    |  |                      |              |
|--------------------|--|----------------------|--------------|
| <b>Project</b>     | Weld County, CO (UTM-NAD83)                    |                      |              |
| <b>Map System:</b> | Universal Transverse Mercator (US Survey Feet) | <b>System Datum:</b> | Ground Level |
| <b>Geo Datum:</b>  | North American Datum 1983                      |                      |              |
| <b>Map Zone:</b>   | Zone 13N (108 W to 102 W)                      |                      |              |

|                       |                            |           |                    |            |             |
|-----------------------|----------------------------|-----------|--------------------|------------|-------------|
| Site                  | 3N-67W-12 DB FARMS 40-12HZ |           |                    |            |             |
| Site Position:        |                            | Northing: | 14,614,275.12 usft | Latitude:  | 40.240278   |
| From:                 | Map                        | Easting:  | 1,687,616.45 usft  | Longitude: | -104.830866 |
| Position Uncertainty: |                            | 0.00 usft | Slot Radius:       | 13.200 in  |             |

| Well                 | DB FARMS 12-1HZ - Slot DB FARMS 12-1HZ |           |                     |                    |               |               |
|----------------------|--|-----------|---------------------|--------------------|---------------|---------------|
| Well Position        | +N/-S                                  | 0.00 usft | Northing:           | 14,614,275.12 usft | Latitude:     | 40.240278     |
|                      | +E/-W                                  | 0.00 usft | Easting:            | 1,687,616.45 usft  | Longitude:    | -104.830866   |
| Position Uncertainty |  | 3.28 usft | Wellhead Elevation: | usft               | Ground Level: | 4,793.00 usft |
| Grid Convergence:    |  | 0.11 °    |                     |                    |               |               |

|                  |                   |                    |                        |                      |                            |
|------------------|-------------------|--------------------|------------------------|----------------------|----------------------------|
| <b>Wellbore</b>  | OH                |                    |                        |                      |                            |
| <b>Magnetics</b> | <b>Model Name</b> | <b>Sample Date</b> | <b>Declination (°)</b> | <b>Dip Angle (°)</b> | <b>Field Strength (nT)</b> |
|                  | IGRF2015          | 8/3/2020           | 7.90                   | 66.64                | 51,946.17876211            |

|                          |                                |                     |                     |                      |      |
|--------------------------|--------------------------------|---------------------|---------------------|----------------------|------|
| <b>Design</b>            | OH                             |                     |                     |                      |      |
| <b>Audit Notes:</b>      |                                |                     |                     |                      |      |
| <b>Version:</b>          | 1.0                            | <b>Phase:</b>       | ACTUAL              | <b>Tie On Depth:</b> | 0.00 |
| <b>Vertical Section:</b> | <b>Depth From (TVD) (usft)</b> | <b>+N/-S (usft)</b> | <b>+E/-W (usft)</b> | <b>Direction (°)</b> |      |
|                          | 0.00                           | 0.00                | 0.00                | 179.91               |      |

|                       |                  |                          |                       |                                    |  |
|-----------------------|------------------|--------------------------|-----------------------|------------------------------------|--|
| <b>Survey Program</b> | <b>Date</b>      | 4/29/2022                |                       |                                    |  |
| <b>From (usft)</b>    | <b>To (usft)</b> | <b>Survey (Wellbore)</b> | <b>Tool Name</b>      | <b>Description</b>                 |  |
| 82.00                 | 1,913.00         | Survey #1 (OH)           | APC_ISCWSA REV 2 MWD+ | Fixed:v2:crustal field declination |  |

|                              |                        |                    |                              |                     |                     |                                |                              |                             |                            |  |
|------------------------------|------------------------|--------------------|------------------------------|---------------------|---------------------|--------------------------------|------------------------------|-----------------------------|----------------------------|--|
| <b>Survey</b>                |                        |                    |                              |                     |                     |                                |                              |                             |                            |  |
| <b>Measured Depth (usft)</b> | <b>Inclination (°)</b> | <b>Azimuth (°)</b> | <b>Vertical Depth (usft)</b> | <b>+N/-S (usft)</b> | <b>+E/-W (usft)</b> | <b>Vertical Section (usft)</b> | <b>Dogleg Rate (°/100ft)</b> | <b>Build Rate (°/100ft)</b> | <b>Turn Rate (°/100ft)</b> |  |
| 0.00                         | 0.00                   | 0.00               | 0.00                         | 0.00                | 0.00                | 0.00                           | 0.00                         | 0.00                        | 0.00                       |  |
| 82.00                        | 0.41                   | 94.48              | 82.00                        | -0.02               | 0.29                | 0.02                           | 0.50                         | 0.50                        | 0.00                       |  |
| 173.00                       | 0.71                   | 328.02             | 173.00                       | 0.43                | 0.32                | -0.43                          | 1.11                         | 0.33                        | -138.97                    |  |
| 262.00                       | 1.54                   | 22.80              | 261.98                       | 2.00                | 0.49                | -2.00                          | 1.43                         | 0.93                        | 61.55                      |  |
| 354.00                       | 3.14                   | 23.86              | 353.90                       | 5.44                | 1.99                | -5.44                          | 1.74                         | 1.74                        | 1.15                       |  |
| 444.00                       | 3.57                   | 16.86              | 443.75                       | 10.38               | 3.80                | -10.37                         | 0.66                         | 0.48                        | -7.78                      |  |
| 534.00                       | 4.37                   | 7.96               | 533.53                       | 16.46               | 5.09                | -16.45                         | 1.12                         | 0.89                        | -9.89                      |  |
| 624.00                       | 5.55                   | 0.79               | 623.19                       | 24.21               | 5.62                | -24.20                         | 1.48                         | 1.31                        | -7.97                      |  |
| 714.00                       | 7.61                   | 0.22               | 712.60                       | 34.52               | 5.70                | -34.51                         | 2.29                         | 2.29                        | -0.63                      |  |

## Survey Report

|                  |                             |                                     |   |
|------------------|-----------------------------|-------------------------------------|---|
| <b>Company:</b>  | Occidental Petroleum        | <b>Local Co-ordinate Reference:</b> | Well DB FARMS 12-1HZ - Slot DB FARMS 12-1HZ |
| <b>Project:</b>  | Weld County, CO (UTM-NAD83) | <b>TVD Reference:</b>               | GE 4793 + 5 @ 4798.00usft (Ikona 12)        |
| <b>Site:</b>     | 3N-67W-12 DB FARMS 40-12HZ  | <b>MD Reference:</b>                | GE 4793 + 5 @ 4798.00usft (Ikona 12)        |
| <b>Well:</b>     | DB FARMS 12-1HZ             | <b>North Reference:</b>             | True  |
| <b>Wellbore:</b> | OH                          | <b>Survey Calculation Method:</b>   | Minimum Curvature                           |
| <b>Design:</b>   | OH                          | <b>Database:</b>                    | EDM 5000.1 Single User Db                   |

| Survey   |                 |             |                       |              |              |                         |                       |                      |                     |
|--|-----------------|-------------|-----------------------|--------------|--------------|-------------------------|-----------------------|----------------------|---------------------|
| Measured Depth (usft)  | Inclination (°) | Azimuth (°) | Vertical Depth (usft) | +N/-S (usft) | +E/-W (usft) | Vertical Section (usft) | Dogleg Rate (°/100ft) | Build Rate (°/100ft) | Turn Rate (°/100ft) |
| 804.00   | 8.94            | 356.11      | 801.66                | 47.45        | 5.25         | -47.45                  | 1.62                  | 1.48                 | -4.57               |
| 894.00   | 10.04           | 356.34      | 890.42                | 62.26        | 4.28         | -62.25                  | 1.22                  | 1.22                 | 0.26                |
| 984.00   | 11.72           | 356.09      | 978.80                | 79.21        | 3.15         | -79.21                  | 1.87                  | 1.87                 | -0.28               |
| 1,074.00   | 14.64           | 355.54      | 1,066.42              | 99.67        | 1.64         | -99.67                  | 3.25                  | 3.24                 | -0.61               |
| 1,164.00   | 14.65           | 357.38      | 1,153.50              | 122.38       | 0.24         | -122.38                 | 0.52                  | 0.01                 | 2.04                |
| 1,254.00   | 16.38           | 359.90      | 1,240.22              | 146.44       | -0.30        | -146.44                 | 2.06                  | 1.92                 | 2.80                |
| 1,344.00   | 17.30           | 359.80      | 1,326.36              | 172.52       | -0.37        | -172.52                 | 1.02                  | 1.02                 | -0.11               |
| 1,434.00   | 17.66           | 0.29        | 1,412.20              | 199.55       | -0.35        | -199.55                 | 0.43                  | 0.40                 | 0.54                |
| 1,524.00   | 19.93           | 357.93      | 1,497.40              | 228.53       | -0.83        | -228.54                 | 2.66                  | 2.52                 | -2.62               |
| 1,614.00   | 21.92           | 356.98      | 1,581.46              | 260.64       | -2.27        | -260.65                 | 2.24                  | 2.21                 | -1.06               |
| 1,704.00   | 22.52           | 0.11        | 1,664.78              | 294.66       | -3.13        | -294.66                 | 1.47                  | 0.67                 | 3.48                |
| 1,794.00   | 23.99           | 2.45        | 1,747.47              | 330.17       | -2.31        | -330.18                 | 1.93                  | 1.63                 | 2.60                |
| 1,848.00   | 24.52           | 3.86        | 1,796.70              | 352.32       | -1.09        | -352.32                 | 1.45                  | 0.98                 | 2.61                |
| Final Total MWD - 1848.00' MD  |                 |             |                       |              |              |                         |                       |                      |                     |
| 1,903.00   | 24.52           | 3.86        | 1,846.74              | 375.09       | 0.45         | -375.09                 | 0.00                  | 0.00                 | 0.00                |
| Casing Shoe - 1903' MD(1799' FNL, 279' FEL)  |                 |             |                       |              |              |                         |                       |                      |                     |
| 1,913.00   | 24.52           | 3.86        | 1,855.84              | 379.24       | 0.73         | -379.23                 | 0.00                  | 0.00                 | 0.00                |
| PTB - 1913.00' MD(1799' FNL, 278' FEL) - DB FARMS 12-1HZ BHL (BPZ) - DB FARMS 12-1HZ LP (TPZ) - DB FARMS 12-1HZ Heel - DB FARMS 12-1HZ |                 |             |                       |              |              |                         |                       |                      |                     |

| Design Annotations    |                       |                   |              |   |
|-----------------------|-----------------------|-------------------|--------------|---|
| Measured Depth (usft) | Vertical Depth (usft) | Local Coordinates |              | Comment                                     |
|                       |                       | +N/-S (usft)      | +E/-W (usft) |   |
| 1,848.00              | 1,796.70              | 352.32            | -1.09        | Final Total MWD - 1848.00' MD               |
| 1,903.00              | 1,846.74              | 375.09            | 0.45         | Casing Shoe - 1903' MD(1799' FNL, 279' FEL) |
| 1,913.00              | 1,855.84              | 379.24            | 0.73         | PTB - 1913.00' MD(1799' FNL, 278' FEL)      |

Checked By: \_\_\_\_\_ Approved By: \_\_\_\_\_ Date: \_\_\_\_\_

# **Occidental Petroleum**

**Weld County, CO (UTM-NAD83)**

**3N-67W-12 DB FARMS 40-12HZ**

**DB FARMS 12-1HZ - Slot DB FARMS 12-1HZ**

**OH**

**Design: OH**

## **Survey Report - Geographic**

**29 April, 2022**

# Survey Report - Geographic

|                  |                             |                                     |   |
|------------------|-----------------------------|-------------------------------------|---|
| <b>Company:</b>  | Occidental Petroleum        | <b>Local Co-ordinate Reference:</b> | Well DB FARMS 12-1HZ - Slot DB FARMS 12-1HZ |
| <b>Project:</b>  | Weld County, CO (UTM-NAD83) | <b>TVD Reference:</b>               | GE 4793 + 5 @ 4798.00usft (Ikon 12)         |
| <b>Site:</b>     | 3N-67W-12 DB FARMS 40-12HZ  | <b>MD Reference:</b>                | GE 4793 + 5 @ 4798.00usft (Ikon 12)         |
| <b>Well:</b>     | DB FARMS 12-1HZ             | <b>North Reference:</b>             | True  |
| <b>Wellbore:</b> | OH                          | <b>Survey Calculation Method:</b>   | Minimum Curvature                           |
| <b>Design:</b>   | OH                          | <b>Database:</b>                    | EDM 5000.1 Single User Db                   |

|                    |  |                      |              |
|--------------------|--|----------------------|--------------|
| <b>Project</b>     | Weld County, CO (UTM-NAD83)                    |                      |              |
| <b>Map System:</b> | Universal Transverse Mercator (US Survey Feet) | <b>System Datum:</b> | Ground Level |
| <b>Geo Datum:</b>  | North American Datum 1983                      |                      |              |
| <b>Map Zone:</b>   | Zone 13N (108 W to 102 W)                      |                      |              |

|                       |           |                            |                    |                   |             |
|-----------------------|-----------|----------------------------|--------------------|-------------------|-------------|
| Site                  |           | 3N-67W-12 DB FARMS 40-12HZ |                    |                   |             |
| Site Position:        |           | Northing:                  | 14,614,275.12 usft | Latitude:         | 40.240278   |
| From:                 | Map       | Easting:                   | 1,687,616.45 usft  | Longitude:        | -104.830866 |
| Position Uncertainty: | 0.00 usft | Slot Radius:               | 13.200 in          | Grid Convergence: | 0.11 °      |

|                      |  |           |                     |                    |               |               |
|----------------------|--|-----------|---------------------|--------------------|---------------|---------------|
| Well                 | DB FARMS 12-1HZ - Slot DB FARMS 12-1HZ |           |                     |                    |               |               |
| Well Position        | +N/-S                                  | 0.00 usft | Northing:           | 14,614,275.12 usft | Latitude:     | 40.240278     |
|                      | +E/-W                                  | 0.00 usft | Easting:            | 1,687,616.45 usft  | Longitude:    | -104.830866   |
| Position Uncertainty |  | 3.28 usft | Wellhead Elevation: | usft               | Ground Level: | 4,793.00 usft |

|                  |                   |                    |                        |                      |                            |
|------------------|-------------------|--------------------|------------------------|----------------------|----------------------------|
| <b>Wellbore</b>  | OH                |                    |                        |                      |                            |
| <b>Magnetics</b> | <b>Model Name</b> | <b>Sample Date</b> | <b>Declination (°)</b> | <b>Dip Angle (°)</b> | <b>Field Strength (nT)</b> |
|                  | IGRF2015          | 8/3/2020           | 7.90                   | 66.64                | 51,946.17876211            |

|                          |                                |                     |                     |                      |      |
|--------------------------|--------------------------------|---------------------|---------------------|----------------------|------|
| <b>Design</b>            | OH                             |                     |                     |                      |      |
| <b>Audit Notes:</b>      |                                |                     |                     |                      |      |
| <b>Version:</b>          | 1.0                            | <b>Phase:</b>       | ACTUAL              | <b>Tie On Depth:</b> | 0.00 |
| <b>Vertical Section:</b> | <b>Depth From (TVD) (usft)</b> | <b>+N/-S (usft)</b> | <b>+E/-W (usft)</b> | <b>Direction (°)</b> |      |
|                          | 0.00                           | 0.00                | 0.00                | 179.91               |      |

|                       |                  |                          |                       |                                    |  |
|-----------------------|------------------|--------------------------|-----------------------|------------------------------------|--|
| <b>Survey Program</b> | <b>Date</b>      | 4/29/2022                |                       |                                    |  |
| <b>From (usft)</b>    | <b>To (usft)</b> | <b>Survey (Wellbore)</b> | <b>Tool Name</b>      | <b>Description</b>                 |  |
| 82.00                 | 1,913.00         | Survey #1 (OH)           | APC_ISCWSA REV 2 MWD+ | Fixed:v2:crustal field declination |  |

|                              |                        |                    |                              |                     |                     |                            |                           |                 |                  |
|------------------------------|------------------------|--------------------|------------------------------|---------------------|---------------------|----------------------------|---------------------------|-----------------|------------------|
| <b>Survey</b>                |                        |                    |                              |                     |                     |                            |                           |                 |                  |
| <b>Measured Depth (usft)</b> | <b>Inclination (°)</b> | <b>Azimuth (°)</b> | <b>Vertical Depth (usft)</b> | <b>+N/-S (usft)</b> | <b>+E/-W (usft)</b> | <b>Map Northing (usft)</b> | <b>Map Easting (usft)</b> | <b>Latitude</b> | <b>Longitude</b> |
| 0.00                         | 0.00                   | 0.00               | 0.00                         | 0.00                | 0.00                | 14,614,275.12              | 1,687,616.45              | 40.240278       | -104.830866      |
| 82.00                        | 0.41                   | 94.48              | 82.00                        | -0.02               | 0.29                | 14,614,275.09              | 1,687,616.74              | 40.240278       | -104.830865      |
| 173.00                       | 0.71                   | 328.02             | 173.00                       | 0.43                | 0.32                | 14,614,275.55              | 1,687,616.77              | 40.240279       | -104.830865      |
| 262.00                       | 1.54                   | 22.80              | 261.98                       | 2.00                | 0.49                | 14,614,277.12              | 1,687,616.93              | 40.240283       | -104.830864      |
| 354.00                       | 3.14                   | 23.86              | 353.90                       | 5.44                | 1.99                | 14,614,280.56              | 1,687,618.43              | 40.240293       | -104.830859      |
| 444.00                       | 3.57                   | 16.86              | 443.75                       | 10.38               | 3.80                | 14,614,285.50              | 1,687,620.23              | 40.240306       | -104.830852      |
| 534.00                       | 4.37                   | 7.96               | 533.53                       | 16.46               | 5.09                | 14,614,291.58              | 1,687,621.50              | 40.240323       | -104.830848      |
| 624.00                       | 5.55                   | 0.79               | 623.19                       | 24.21               | 5.62                | 14,614,299.33              | 1,687,622.02              | 40.240344       | -104.830846      |
| 714.00                       | 7.61                   | 0.22               | 712.60                       | 34.52               | 5.70                | 14,614,309.65              | 1,687,622.09              | 40.240373       | -104.830846      |
| 804.00                       | 8.94                   | 356.11             | 801.66                       | 47.45               | 5.25                | 14,614,322.58              | 1,687,621.61              | 40.240408       | -104.830847      |
| 894.00                       | 10.04                  | 356.34             | 890.42                       | 62.26               | 4.28                | 14,614,337.39              | 1,687,620.61              | 40.240449       | -104.830851      |

## Survey Report - Geographic

|                  |                             |                                     |   |
|------------------|-----------------------------|-------------------------------------|---|
| <b>Company:</b>  | Occidental Petroleum        | <b>Local Co-ordinate Reference:</b> | Well DB FARMS 12-1HZ - Slot DB FARMS 12-1HZ |
| <b>Project:</b>  | Weld County, CO (UTM-NAD83) | <b>TVD Reference:</b>               | GE 4793 + 5 @ 4798.00usft (Ikon 12)         |
| <b>Site:</b>     | 3N-67W-12 DB FARMS 40-12HZ  | <b>MD Reference:</b>                | GE 4793 + 5 @ 4798.00usft (Ikon 12)         |
| <b>Well:</b>     | DB FARMS 12-1HZ             | <b>North Reference:</b>             | True  |
| <b>Wellbore:</b> | OH                          | <b>Survey Calculation Method:</b>   | Minimum Curvature                           |
| <b>Design:</b>   | OH                          | <b>Database:</b>                    | EDM 5000.1 Single User Db                   |

| Survey  |                 |             |                       |              |              |                     |                    |           |             |
|---|-----------------|-------------|-----------------------|--------------|--------------|---------------------|--------------------|-----------|-------------|
| Measured Depth (usft)   | Inclination (°) | Azimuth (°) | Vertical Depth (usft) | +N/-S (usft) | +E/-W (usft) | Map Northing (usft) | Map Easting (usft) | Latitude  | Longitude   |
| 984.00  | 11.72           | 356.09      | 978.80                | 79.21        | 3.15         | 14,614,354.33       | 1,687,619.45       | 40.240495 | -104.830855 |
| 1,074.00  | 14.64           | 355.54      | 1,066.42              | 99.67        | 1.64         | 14,614,374.79       | 1,687,617.90       | 40.240552 | -104.830860 |
| 1,164.00  | 14.65           | 357.38      | 1,153.50              | 122.38       | 0.24         | 14,614,397.50       | 1,687,616.45       | 40.240614 | -104.830865 |
| 1,254.00  | 16.38           | 359.90      | 1,240.22              | 146.44       | -0.30        | 14,614,421.56       | 1,687,615.87       | 40.240680 | -104.830867 |
| 1,344.00  | 17.30           | 359.80      | 1,326.36              | 172.52       | -0.37        | 14,614,447.63       | 1,687,615.75       | 40.240752 | -104.830867 |
| 1,434.00  | 17.66           | 0.29        | 1,412.20              | 199.55       | -0.35        | 14,614,474.67       | 1,687,615.72       | 40.240826 | -104.830867 |
| 1,524.00  | 19.93           | 357.93      | 1,497.40              | 228.53       | -0.83        | 14,614,503.65       | 1,687,615.18       | 40.240905 | -104.830869 |
| 1,614.00  | 21.92           | 356.98      | 1,581.46              | 260.64       | -2.27        | 14,614,535.76       | 1,687,613.68       | 40.240994 | -104.830874 |
| 1,704.00  | 22.52           | 0.11        | 1,664.78              | 294.66       | -3.13        | 14,614,569.77       | 1,687,612.76       | 40.241087 | -104.830877 |
| 1,794.00  | 23.99           | 2.45        | 1,747.47              | 330.17       | -2.31        | 14,614,605.28       | 1,687,613.51       | 40.241184 | -104.830874 |
| 1,848.00  | 24.52           | 3.86        | 1,796.70              | 352.32       | -1.09        | 14,614,627.43       | 1,687,614.69       | 40.241245 | -104.830870 |
| <b>Final Total MWD - 1848.00' MD</b>  |                 |             |                       |              |              |                     |                    |           |             |
| 1,903.00  | 24.52           | 3.86        | 1,846.74              | 375.09       | 0.45         | 14,614,650.21       | 1,687,616.18       | 40.241308 | -104.830864 |
| <b>Casing Shoe - 1903' MD(1799' FNL, 279' FEL)</b>  |                 |             |                       |              |              |                     |                    |           |             |
| 1,913.00  | 24.52           | 3.86        | 1,855.84              | 379.24       | 0.73         | 14,614,654.35       | 1,687,616.45       | 40.241319 | -104.830863 |
| <b>PTB - 1913.00' MD(1799' FNL, 278' FEL) - DB FARMS 12-1HZ BHL (BPZ) - DB FARMS 12-1HZ LP (TPZ) - DB FARMS 12-1HZ Heel - DB FARMS 12-1HZ</b> |                 |             |                       |              |              |                     |                    |           |             |

| Design Annotations    |                       |                   |              |   |  |
|-----------------------|-----------------------|-------------------|--------------|---|--|
| Measured Depth (usft) | Vertical Depth (usft) | Local Coordinates |              |   |  |
|                       |                       | +N/-S (usft)      | +E/-W (usft) | Comment                                     |  |
| 1,848.00              | 1,796.70              | 352.32            | -1.09        | Final Total MWD - 1848.00' MD               |  |
| 1,903.00              | 1,846.74              | 375.09            | 0.45         | Casing Shoe - 1903' MD(1799' FNL, 279' FEL) |  |
| 1,913.00              | 1,855.84              | 379.24            | 0.73         | PTB - 1913.00' MD(1799' FNL, 278' FEL)      |  |

|                   |                    |             |
|-------------------|--------------------|-------------|
| Checked By: _____ | Approved By: _____ | Date: _____ |
|-------------------|--------------------|-------------|