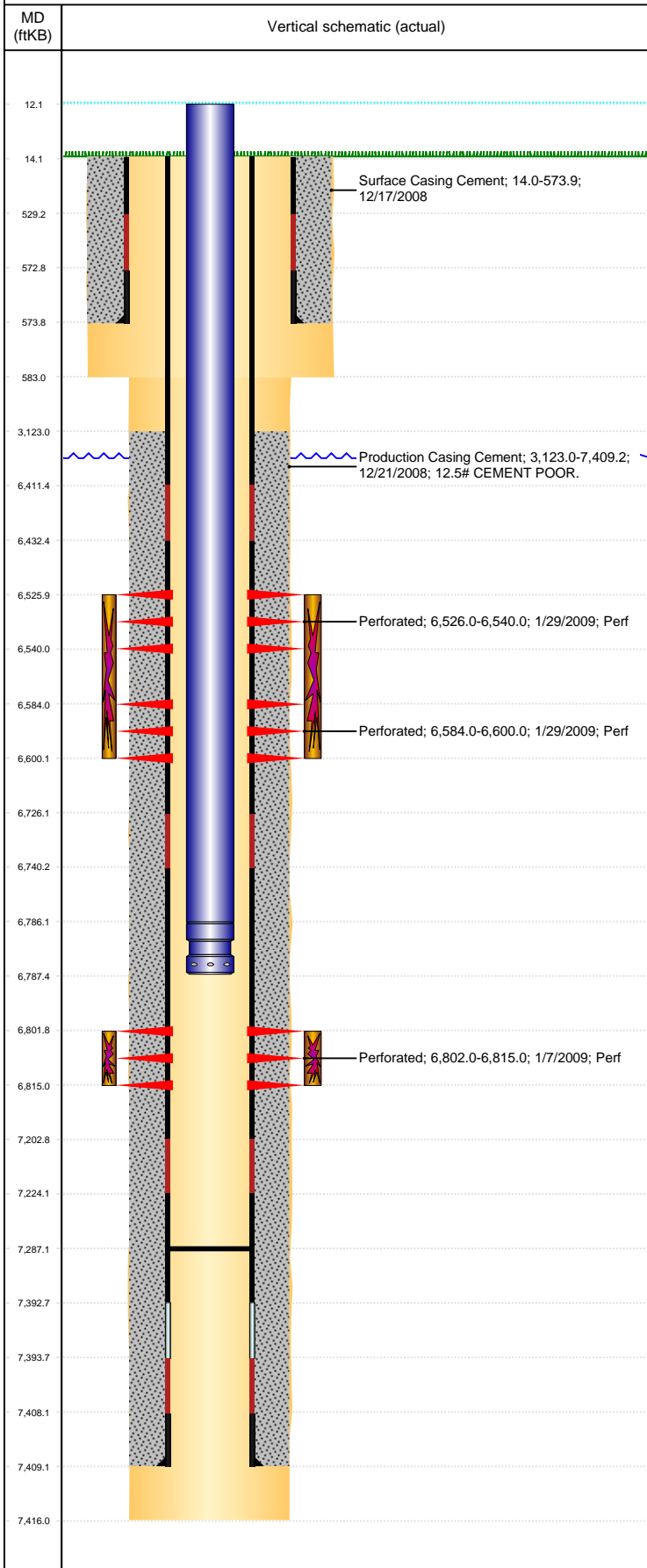


Well Name: BOOTH C35-08

VERTICAL, ORIGINAL HOLE, 4/27/2022 8:32:54 AM



Well Header									
API 05-123-27181		Business Unit DJ BASIN			District 15		Well Config VERTICAL		
KB - GL / MSL (ft... 14.00		Spud Date 12/16/2008		P & A Date		Well Production Status SI			SoRT No
Comment									
Surface Location (Congressional)									
Qtr 3 SE	Qtr 4 NE	Section 35	Twnshp 4	Twnsh... N	Range 64	Rng E... W	Actual Latitude (°) 40.27106702	Actual Longitude (°) -104.51108379	
Wellbore Sections									
Section Des			Size (in)			Act Top, MD (ftKB)		Act Btm, MD (ftKB)	
SURFACE			12 1/4			14		583	
PRODUCTION			7 7/8			583		7,416	
Casing Strings									
Csg Des			Run Date		OD (in)	Wt/Len (lb/ft)	Grade	Top, MD (ftKB)	MD (ftKB)
Surface			12/17/2008		8 5/8	24.00	J-55	14.0	573.9
Production			12/21/2008		4 1/2	11.60	M-80	14.0	7,409.2
Cement									
Des					Start Date		Top (ftKB)		Btm (ftKB)
Surface Casing Cement					12/17/2008		14.0		573.9
Production Casing Cement					12/21/2008		3,123.0		7,409.2
Zone Statuses									
Zone Name	Status Date	Status	Fluid Type	Job				Prod Method	
NIOBRARA	2/19/2009	PR		DRILLING/COMPLETION - ORIGINAL, 12/15/200...				Flowing	
NIOBRARA	2/16/2010	PR							
CODELL	2/19/2009	PR		DRILLING/COMPLETION - ORIGINAL, 12/15/200...				Flowing	
CODELL	2/16/2010	PR							
Perforation Data									
Linked Zone		Bnch/Stg	Entered Shot Total	Top (ftKB)		Btm (ftKB)		Date	
NIOBRARA, ORIGINAL HOLE		A	28	6,526.00		6,540.00		1/29/2009	
NIOBRARA, ORIGINAL HOLE		B	32	6,584.00		6,600.00		1/29/2009	
CODELL, ORIGINAL HOLE			52	6,802.00		6,815.00		1/7/2009	
Stimulation Intervals									
Zone				Start Date		Top (ftKB)		Btm (ftKB)	
NIOBRARA, ORIGINAL HOLE				1/29/2009		6,526.0		6,600.0	
CODELL, ORIGINAL HOLE				1/29/2009		6,802.0		6,815.0	
Other In Hole									
Run Date		Des			Make	OD (in)	Top (ftKB)	Btm (ftKB)	
Logs									
Date		Type					Top, MD (ftKB)		Btm, MD (ftKB)
12/20/2008		DIL/GR/SP/Caliper					573.0		7,415.0
12/20/2008		Caliper/Comp. Density/Neutron/GR/SP/ML					2,720.0		7,415.0
12/29/2008		CBL/CCL/GR					2,608.0		7,286.0
Plug Back Total Depths									
Date		Type		Com					Depth (ftKB)
12/21/2008		FLOAT COLLAR							7,393.7
12/29/2008		FILL		TAG WITH WIRELINE LOGGING TOOLS.					7,287.0