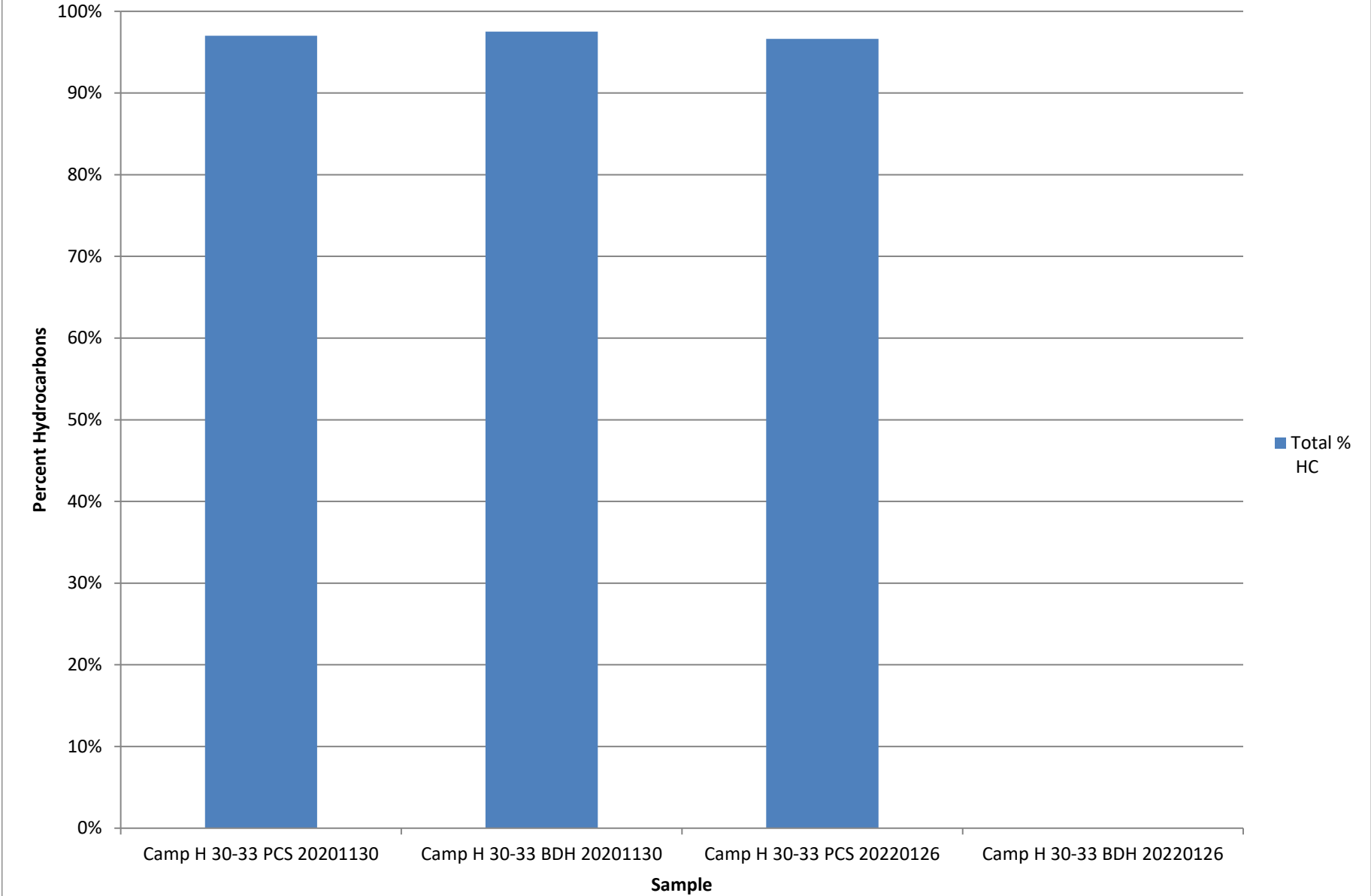
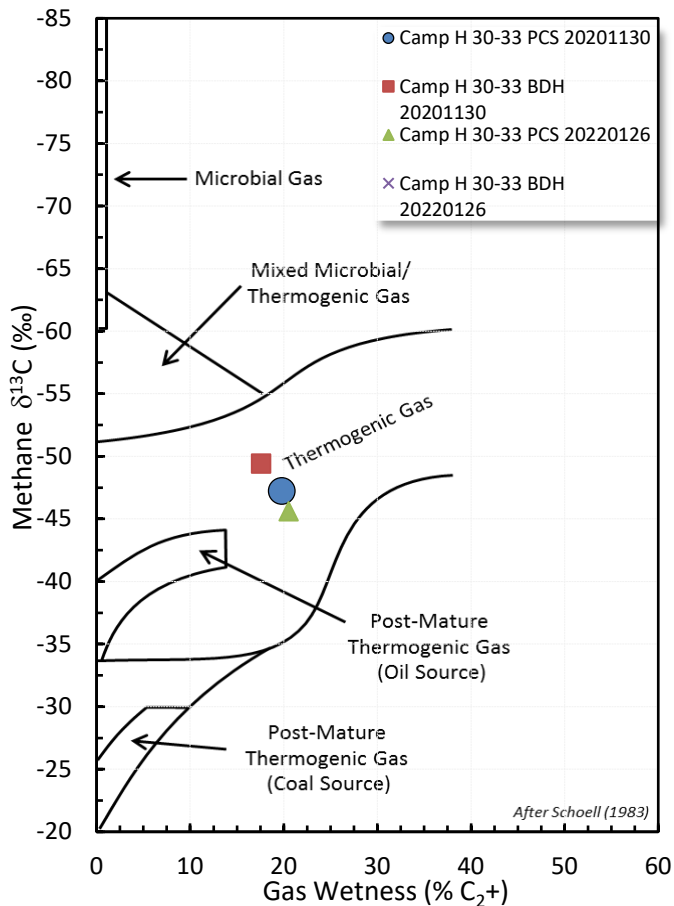


**Total Percent Hydrocarbons**

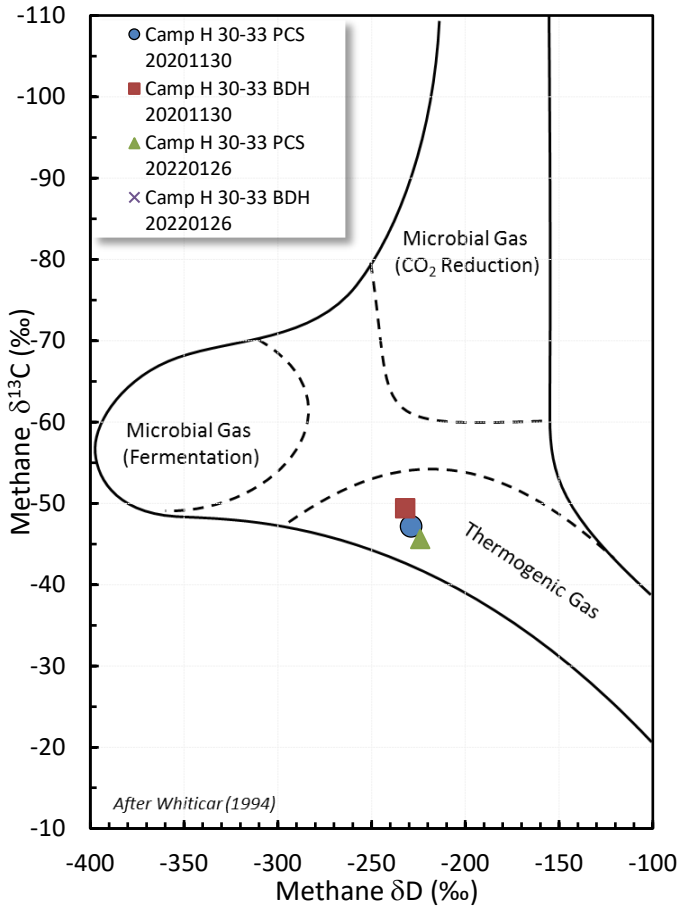


# Stable Isotope Interpretive Plots

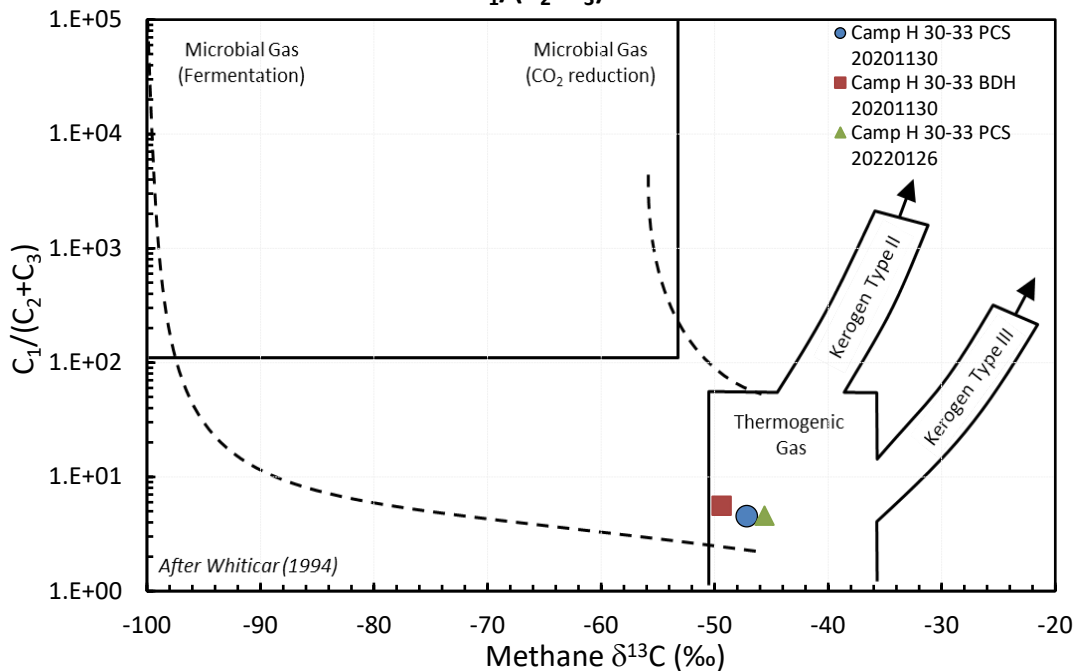
## Methane vs Gas Wetness Genetic Classification



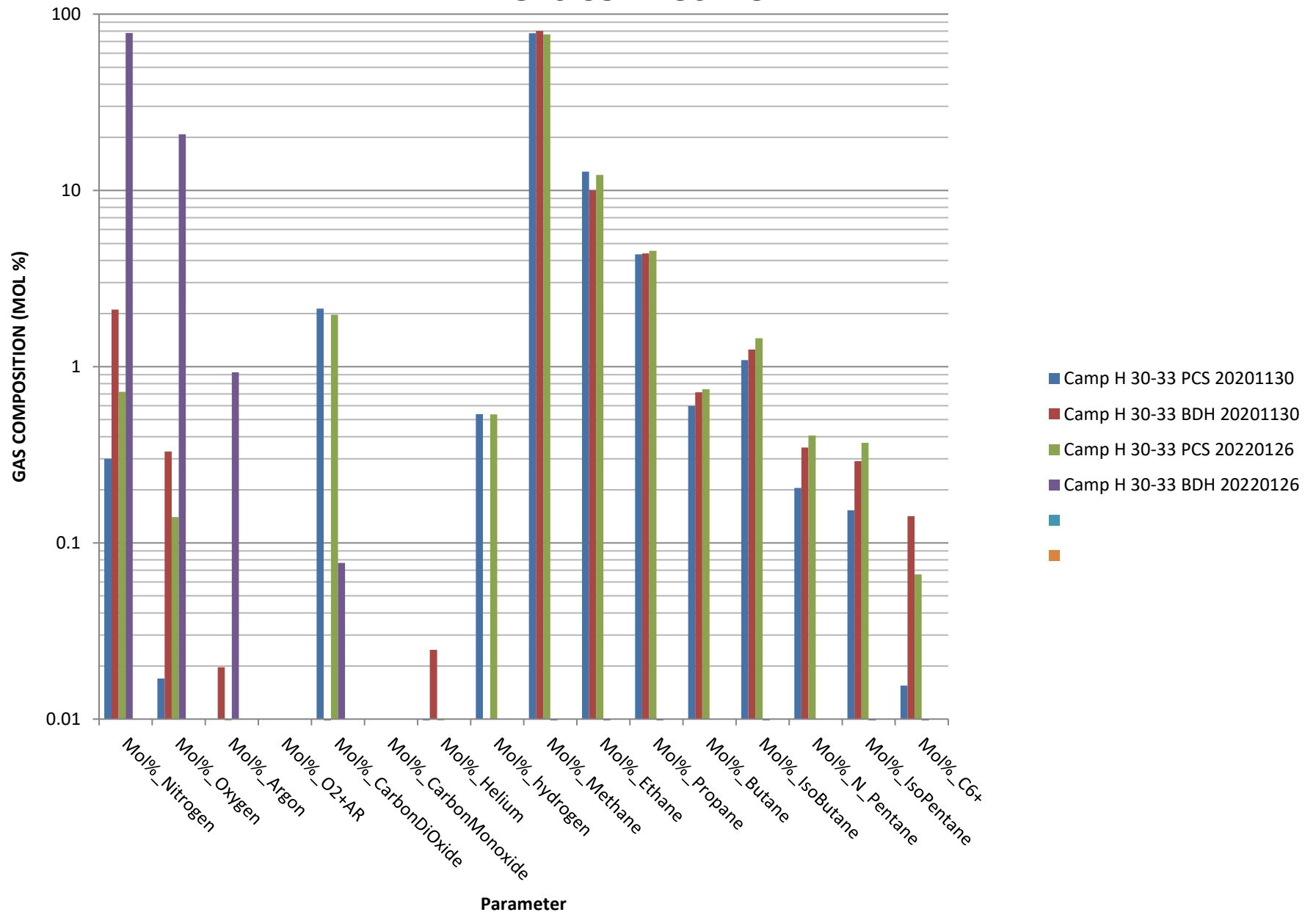
## Methane $\delta^{13}\text{C}$ vs $\delta\text{D}$ Genetic Classification Plot



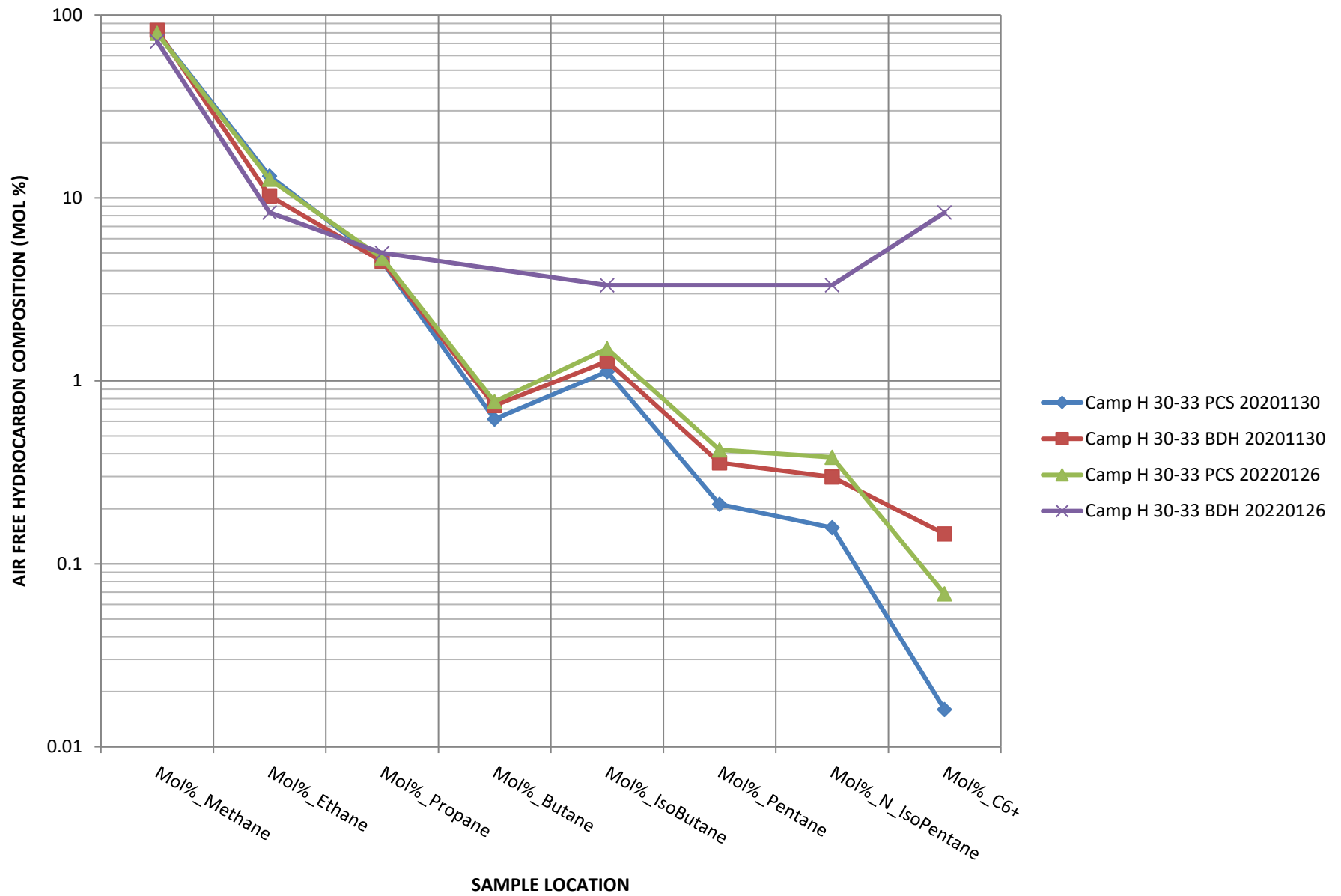
## Methane $\delta^{13}\text{C}$ vs $\text{C}_1/(\text{C}_2+\text{C}_3)$ Genetic Classification Plot

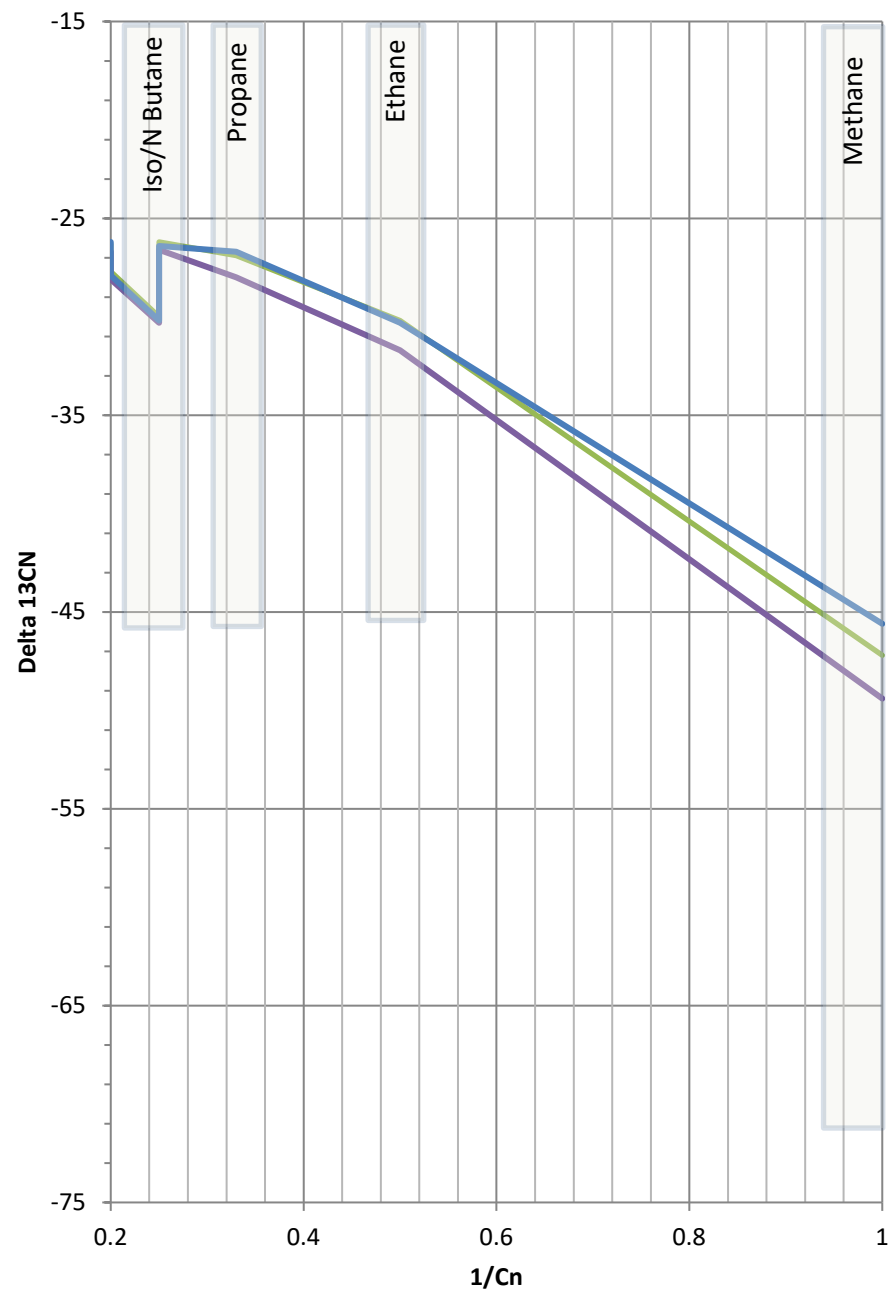


# GAS COMPOSITION



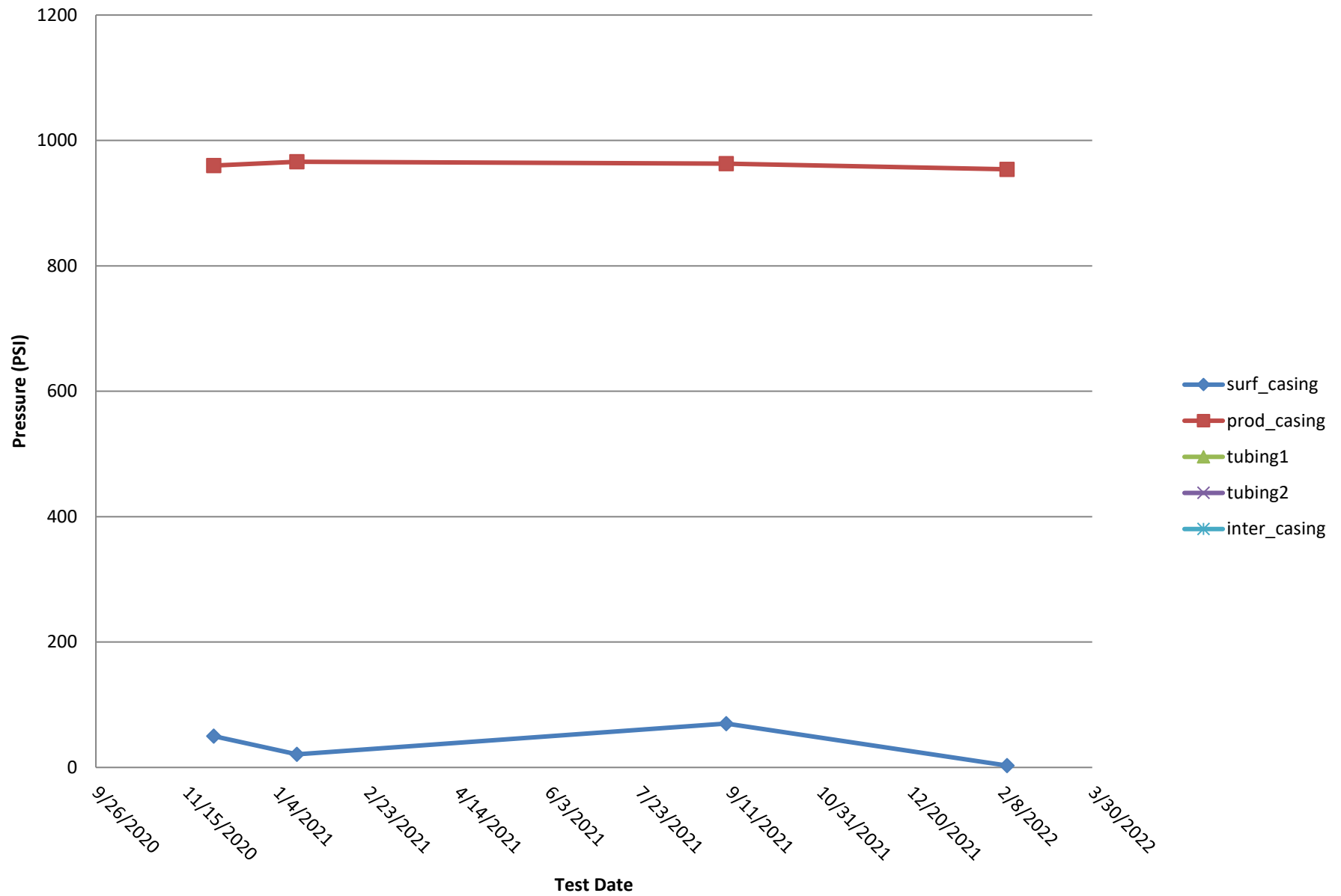
## HYDROCARBON COMPOSITION

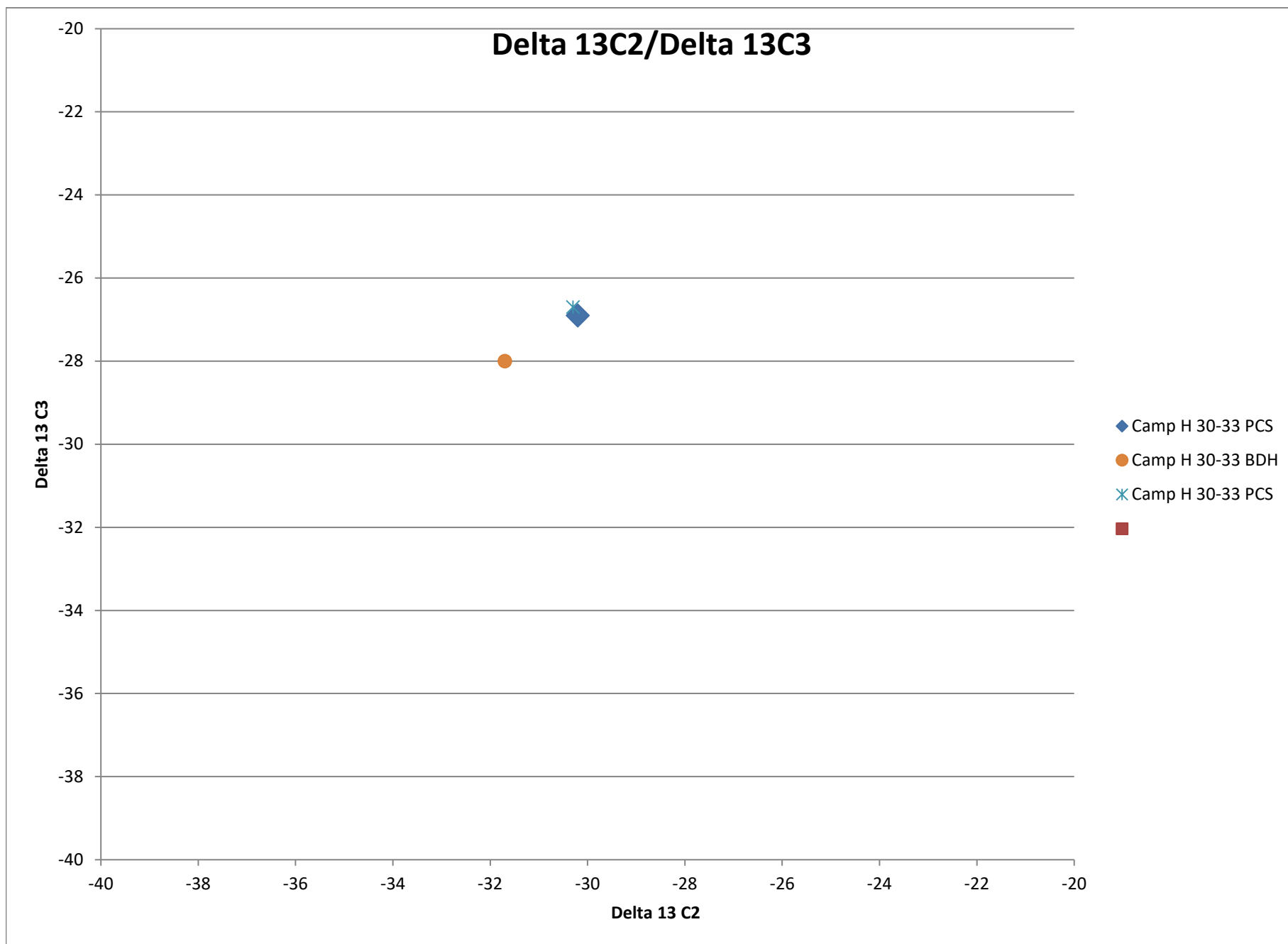




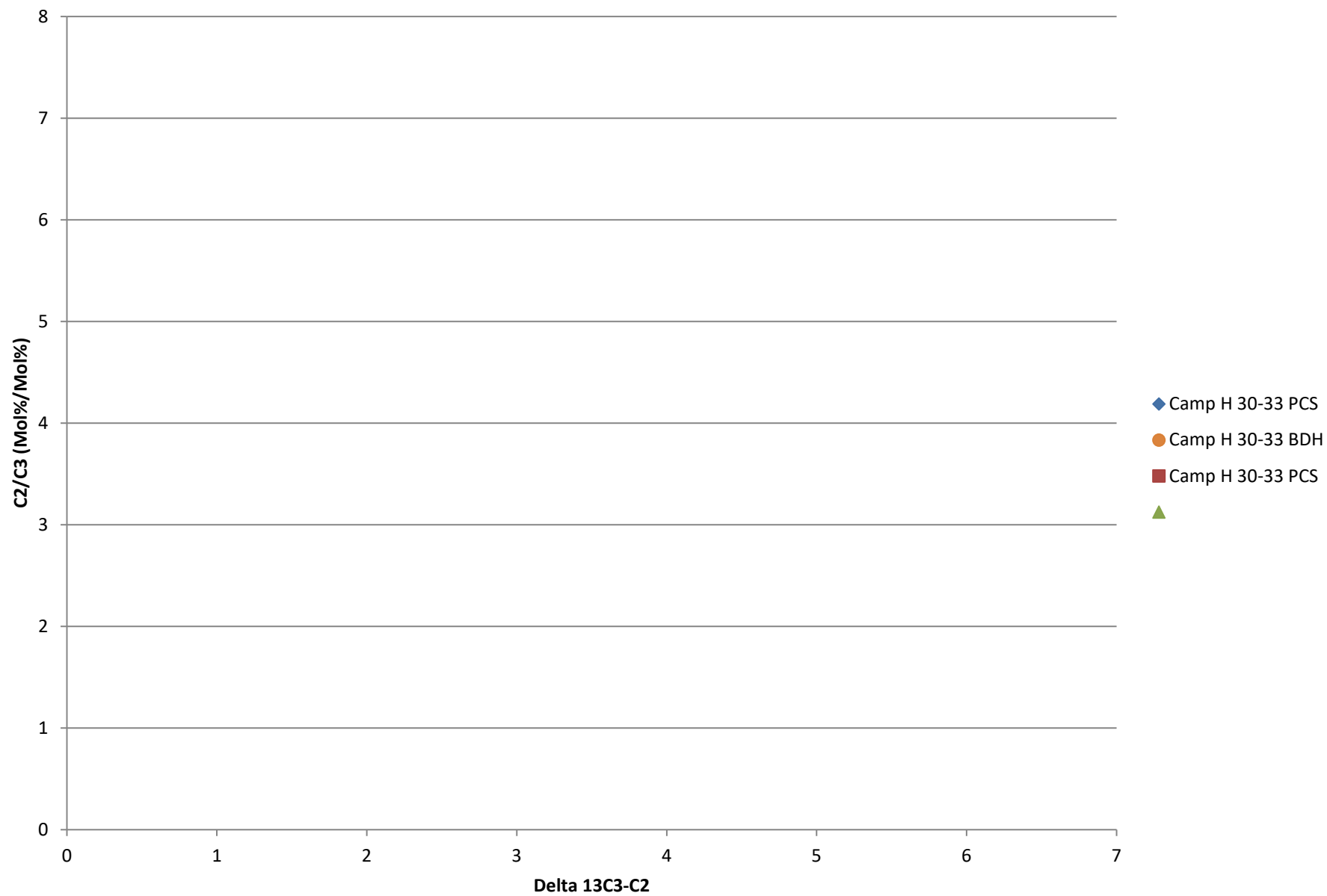
- Camp H 30-33 PCS
- Camp H 30-33 BDH
- Camp H 30-33 PCS

## Bradenhead Test Summary





## Delta13 C2/C3 vs. Delta 13C3-C2





## Delta 13 IC4/ Delta NC4

