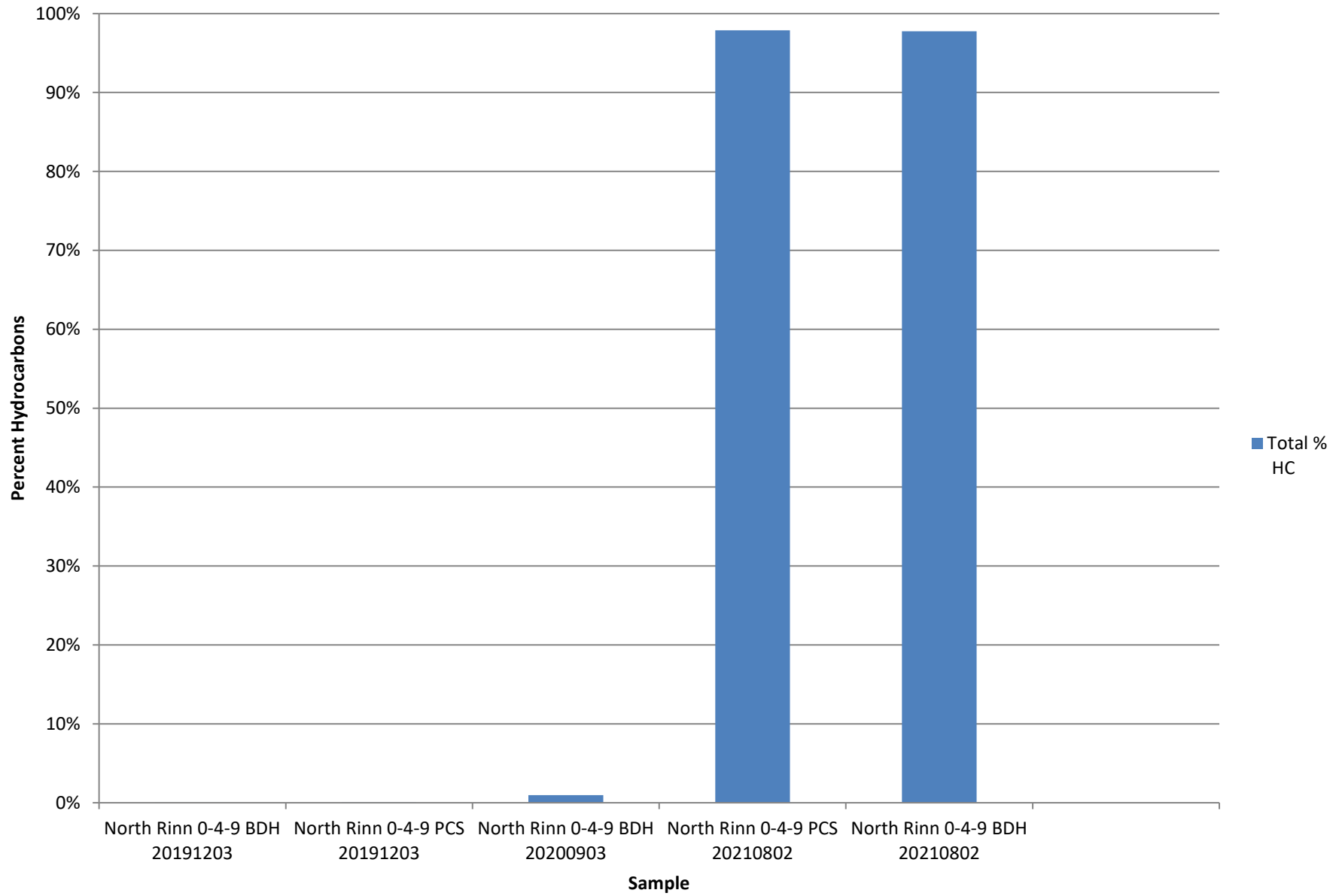
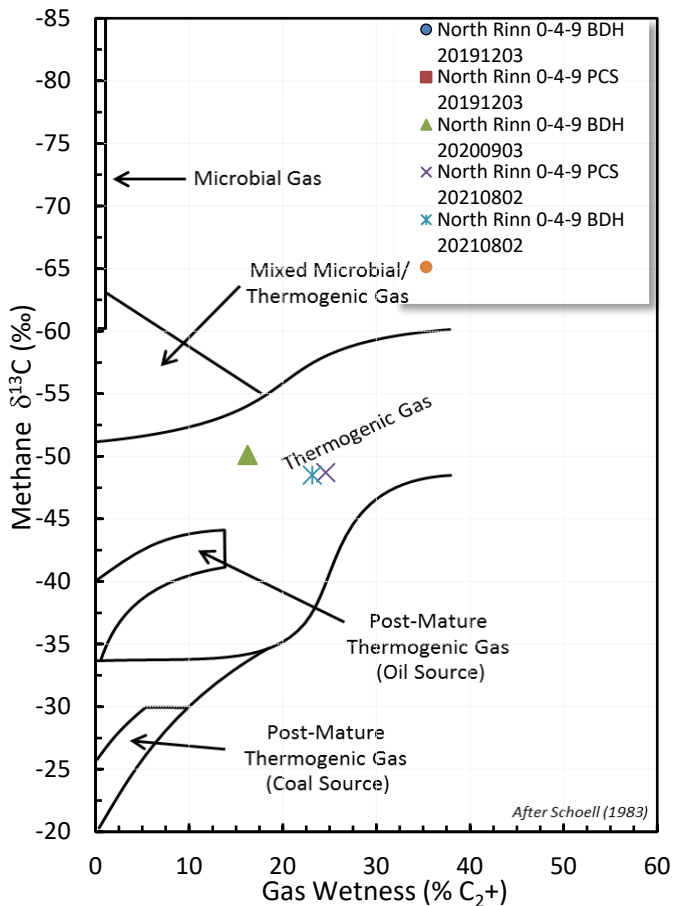


# Total Percent Hydrocarbons

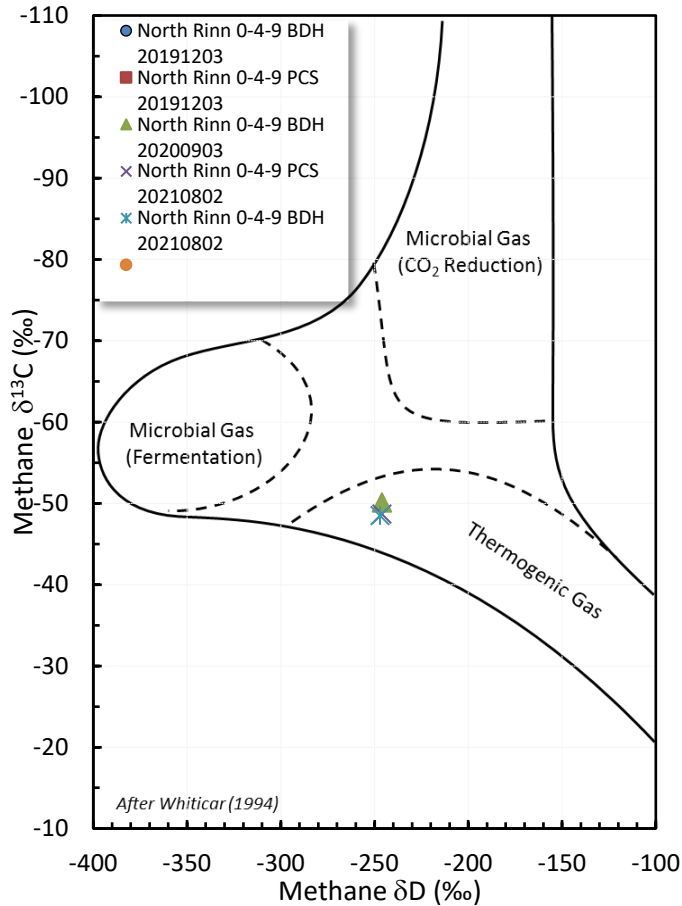


# Stable Isotope Interpretive Plots

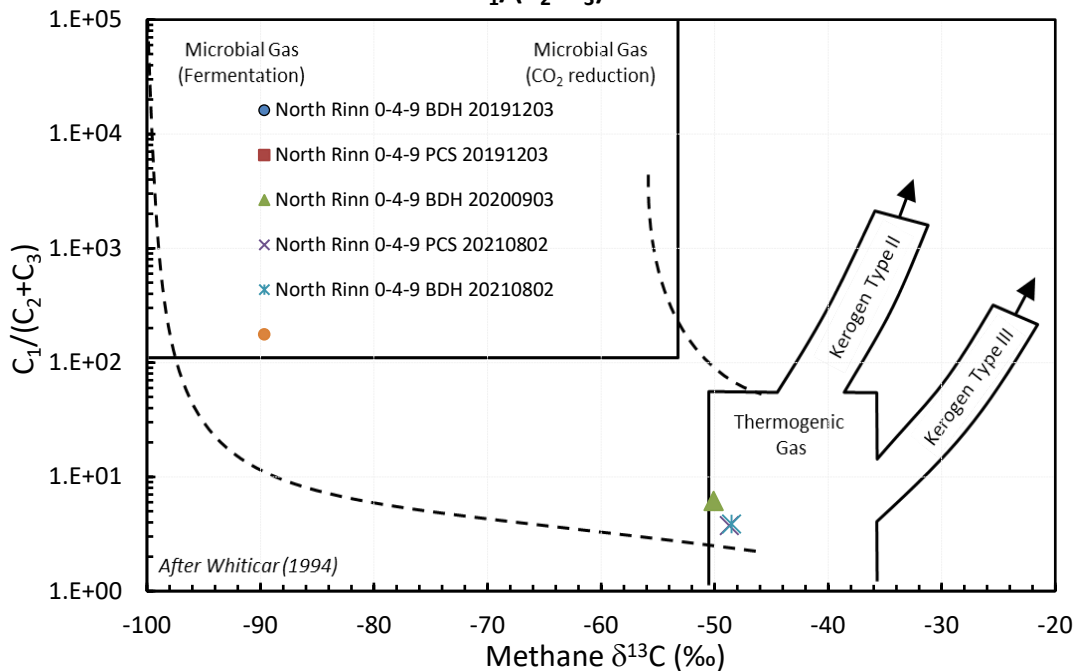
## Methane vs Gas Wetness Genetic Classification



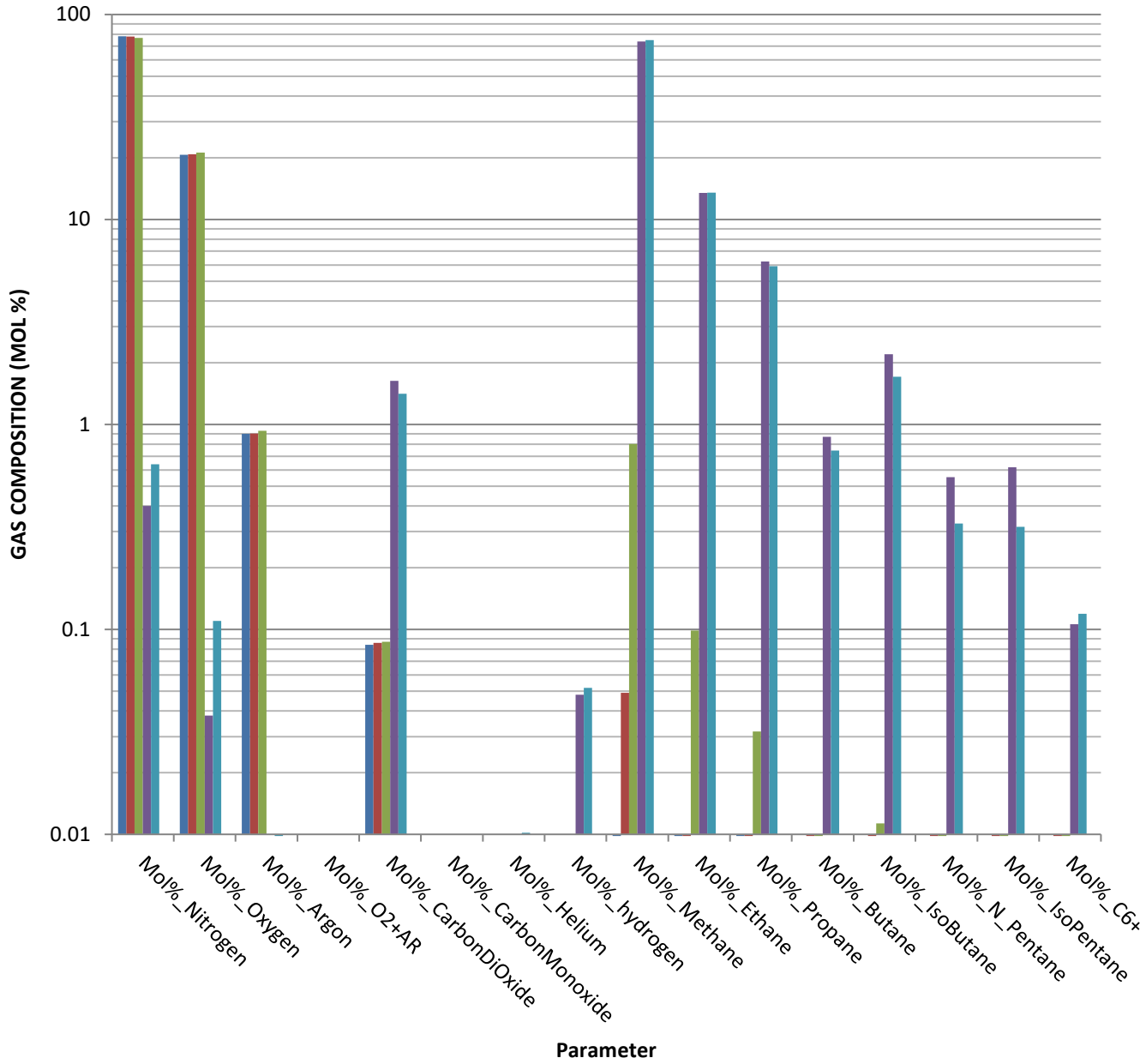
## Methane $\delta^{13}\text{C}$ vs $\delta\text{D}$ Genetic Classification Plot



## Methane $\delta^{13}\text{C}$ vs $\text{C}_1/(\text{C}_2+\text{C}_3)$ Genetic Classification Plot

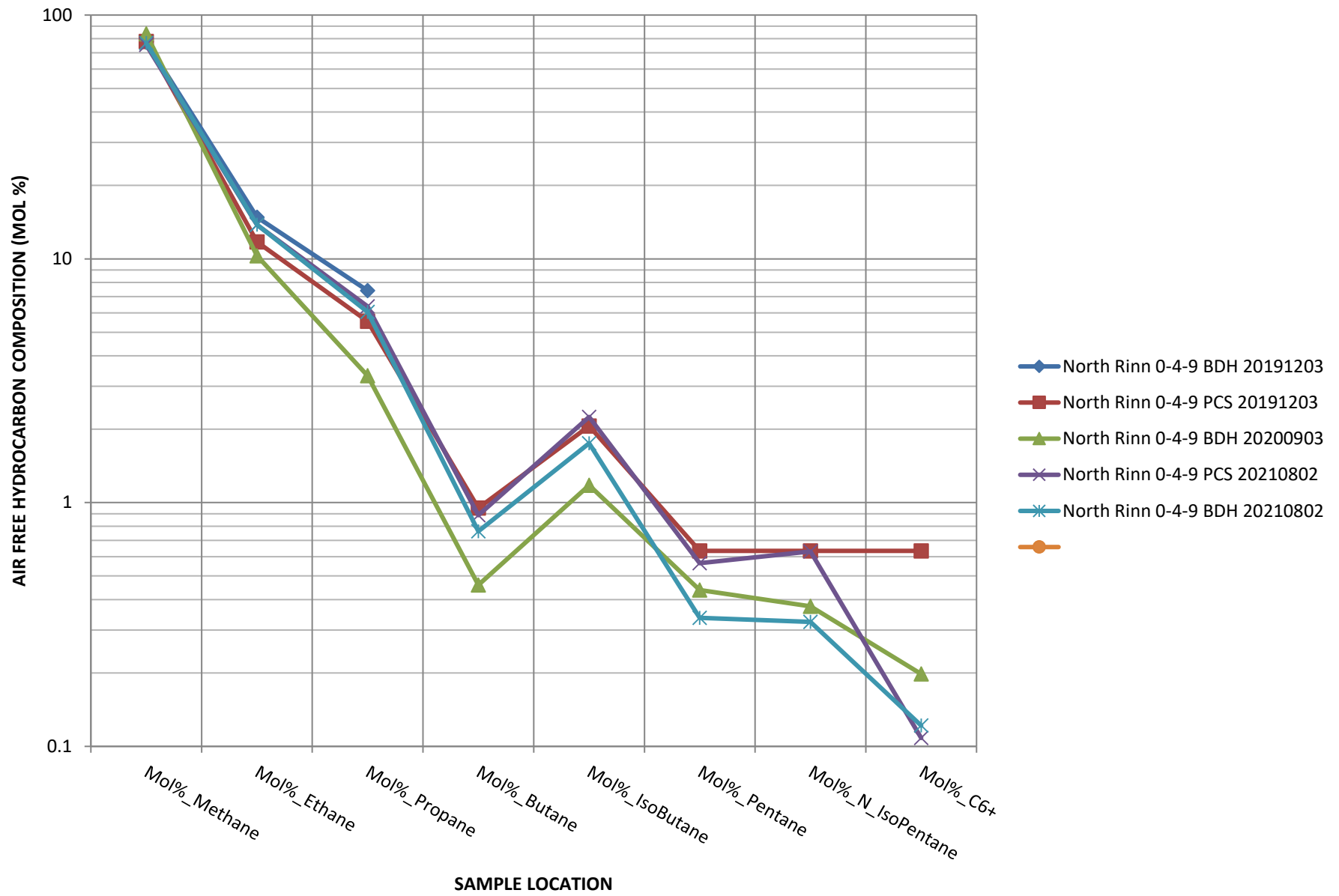


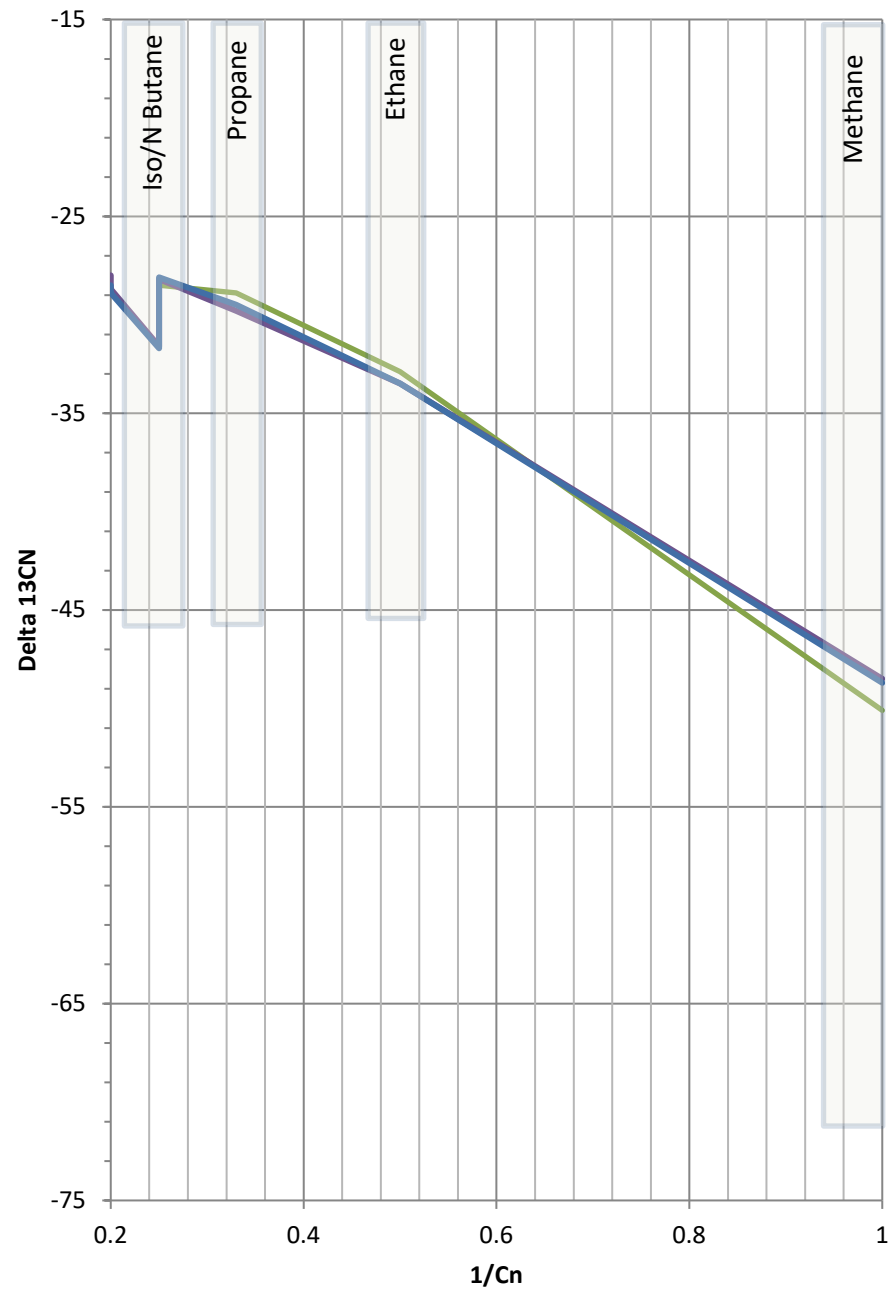
# GAS COMPOSITION



- North Rinn 0-4-9 BDH 20191203
- North Rinn 0-4-9 PCS 20191203
- North Rinn 0-4-9 BDH 20200903
- North Rinn 0-4-9 PCS 20210802
- North Rinn 0-4-9 BDH 20210802

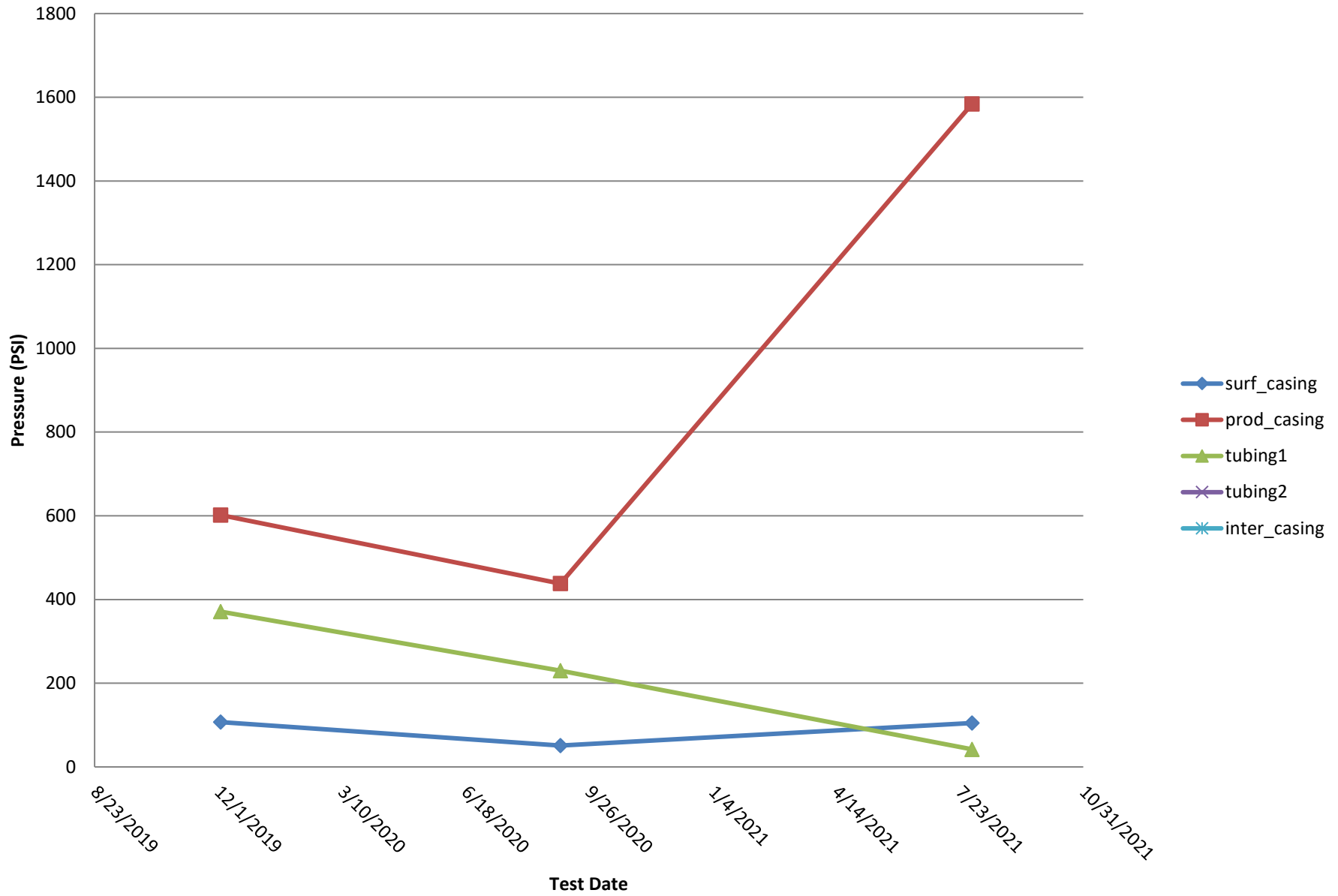
# HYDROCARBON COMPOSITION



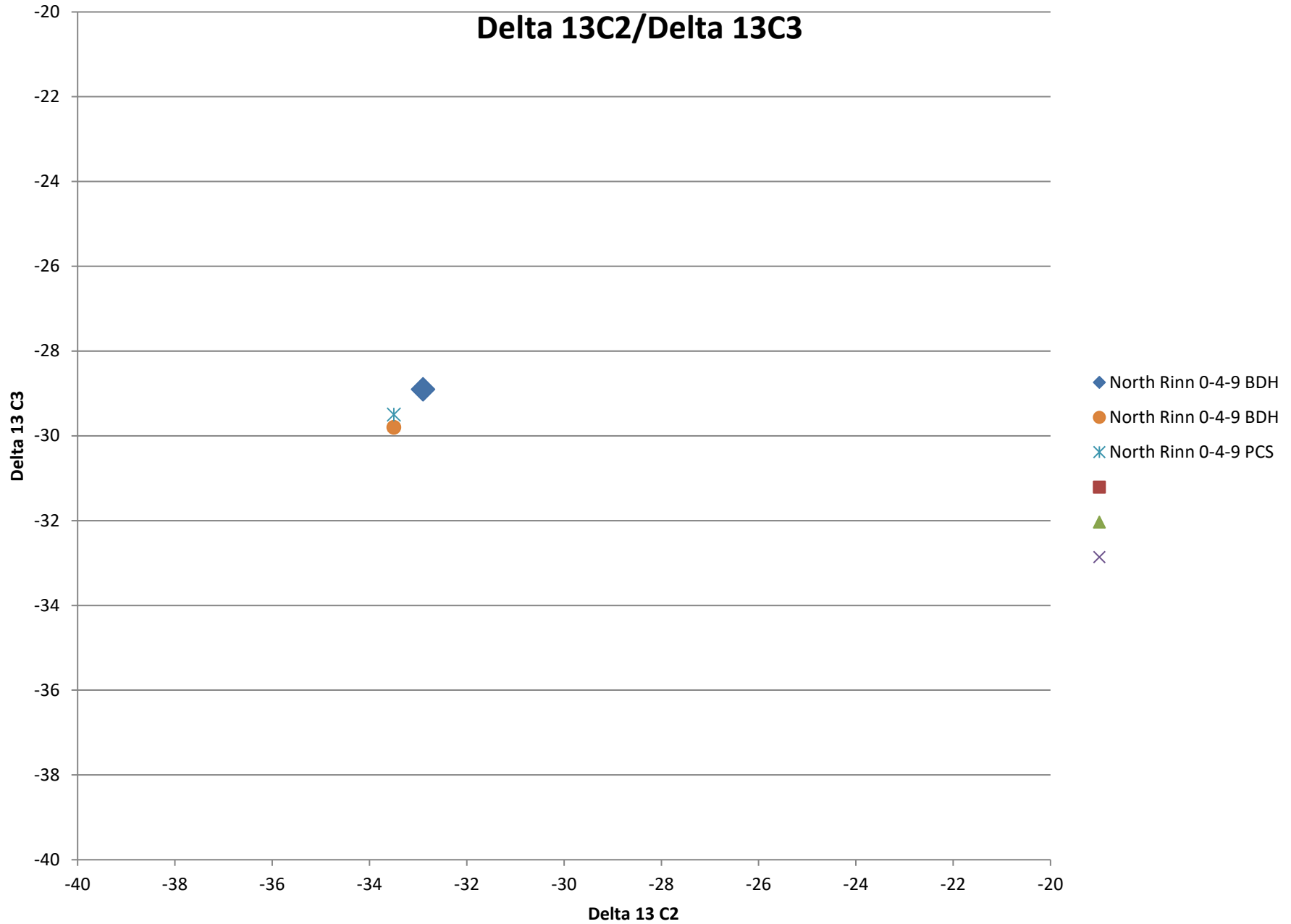


- North Rinn 0-4-9 BDH
- North Rinn 0-4-9 BDH
- North Rinn 0-4-9 PCS
- 
- 
-

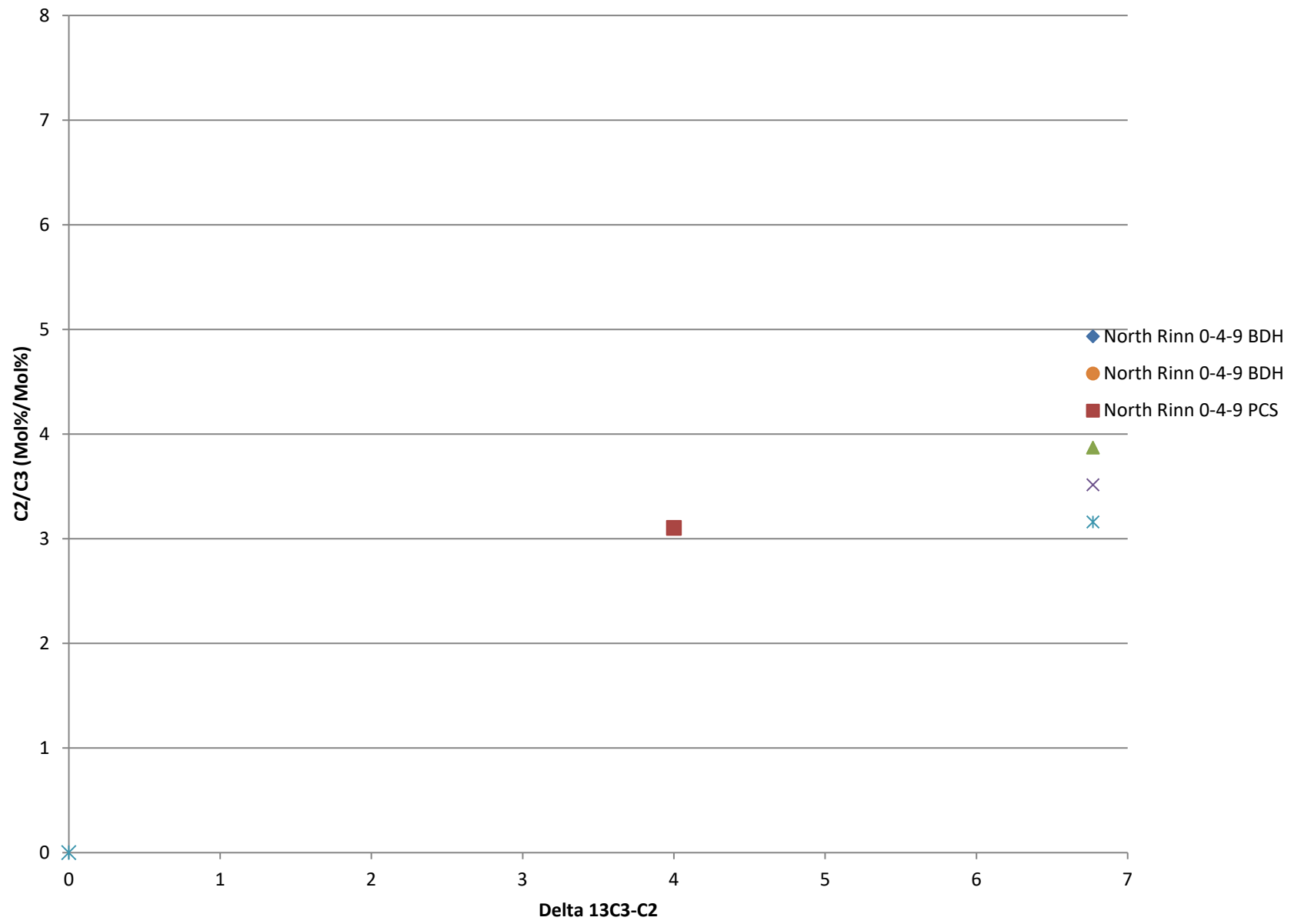
# Bradenhead Test Summary



# Delta 13C2/Delta 13C3



# Delta13 C2/C3 vs. Delta 13C3-C2



# Delta 13 IC4/ Delta NC4

