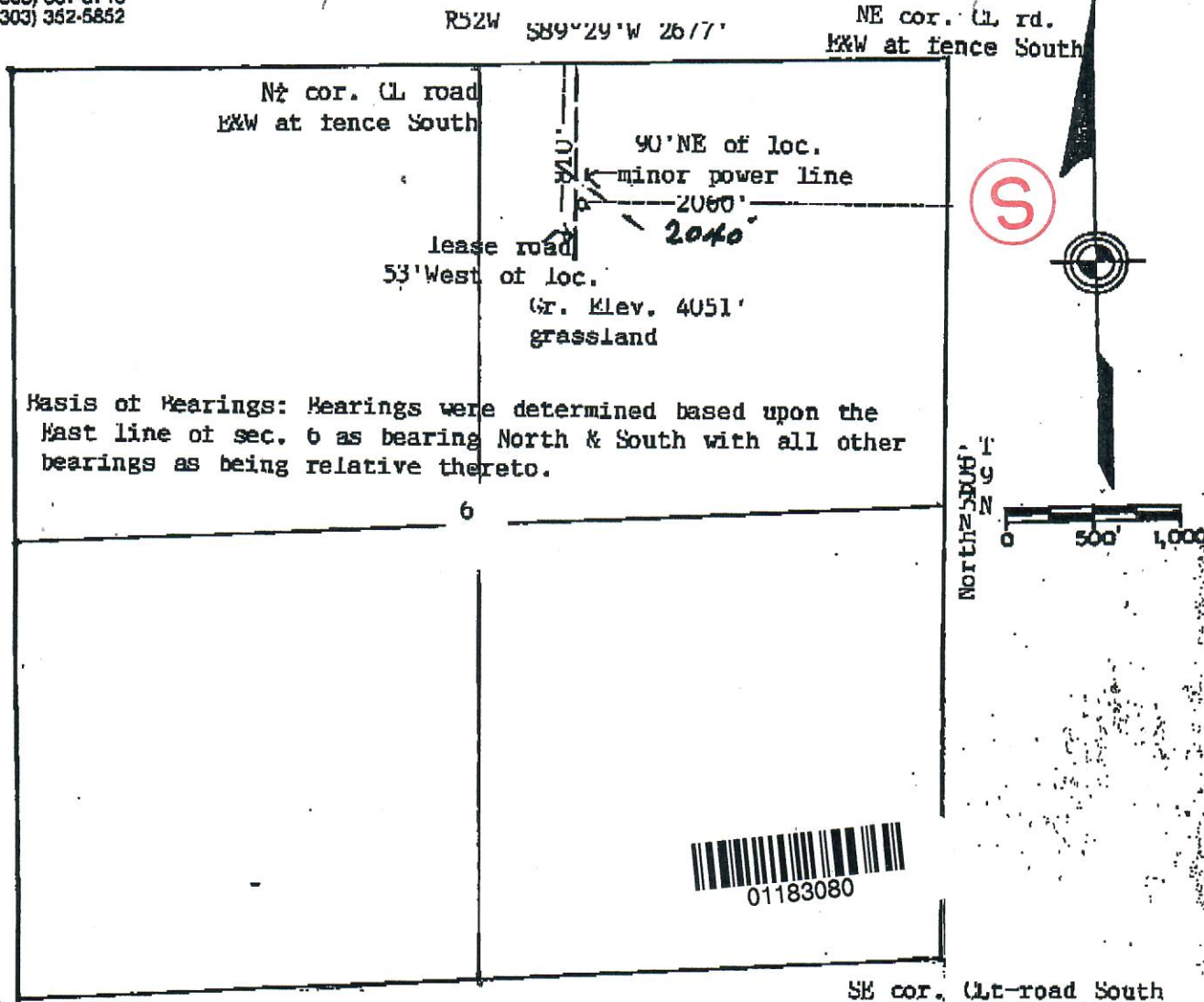




Holloway & Holloway, Inc.
P.O. Box 3331
Greeley, CO 80633
(303) 867-3715
(303) 362-5852

Basis of elev spot elev N
at NE cor. 4086'
NE cor. CL rd.
E&W at fence South



Scale --- 1" = 1000'

In accordance with a request from Advantage Resources Inc.
the Undersigned has
determined the location of the No. 1 Fluharty well

to be 810' FNL & 2060' FEL at right angles as co-ordinates

Section 6 Township 9N Range 52W of the 6th principal Meridian

Logan County, Colorado.

I hereby certify, Advantage Resources, Inc.
that this oil and/or gas well location certificate was prepared for
that it is not a land survey plat or improvement survey plat, and that it is not to be relied upon for the
establishment of fence, building or other future improvement lines

Date 10-24-2002

B. J. Holloway
Holloway & Holloway, Inc.
States of
Colorado, Minnesota, Wyoming

