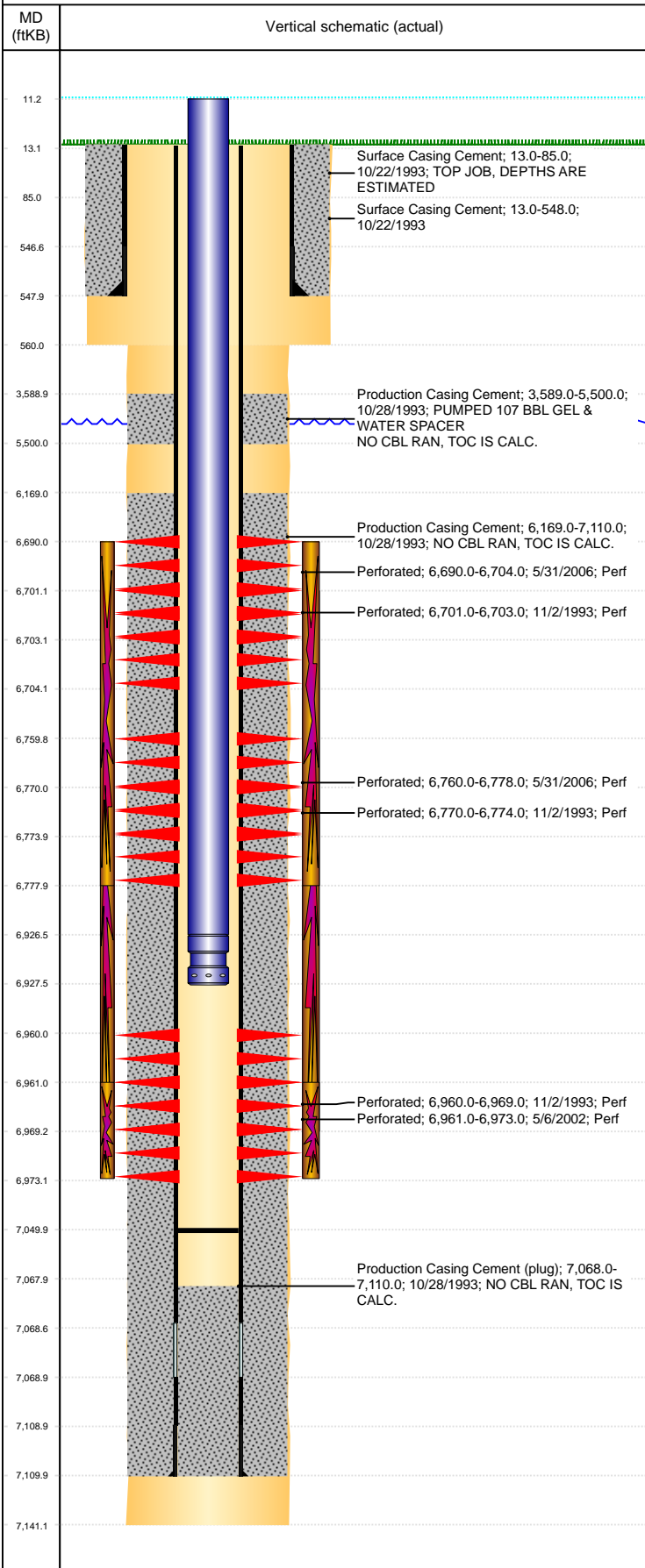


Well Name: HANSCOME 28-04

VERTICAL, ORIGINAL HOLE, 4/12/2022 6:40:12 PM



Well Header

API 05-123-17502	Business Unit DJ BASIN	District 15	Well Config VERTICAL
KB - GL / MSL (ft... 13.00	Spud Date 10/21/1993	P & A Date	Well Production Status PR
SoRT No			

Comment
DISCREPANCY: DR RPT TD DATE 10/27/1993; ST RPT TD DATE 10/28/1993. ST RPT SURF CSG @ 548'; DR RPT SURF CSG @ 548' & 550'.

PROD CSG GRADE: B-70 & M-75

NO CBL RAN, TOC IS CALC, CMNT BOTTOM IS EST.

WELLHEAD IS 3000#

Surface Location (Congressional)

Qtr 3 NW	Qtr 4 NW	Section 28	Twshp 4	Twsh... N	Range 64	Rng E./... W	Actual Latitude (°) 40.28844241	Actual Longitude (°) -104.56332853
-------------	-------------	---------------	------------	--------------	-------------	-----------------	------------------------------------	---------------------------------------

Wellbore Sections

Section Des	Size (in)	Act Top, MD (ftKB)	Act Btm, MD (ftKB)
SURFACE	12 1/4	13	560
PRODUCTION	7 7/8	560	7,141

Casing Strings

Csg Des	Run Date	OD (in)	Wt/Len (lb/ft)	Grade	Top, MD (ftKB)	MD (ftKB)
Surface	10/22/1993	8 5/8	23.00	M-50	13.0	548.0
Production	10/27/1993	3 1/2	7.70	B-70	13.0	7,110.0

Cement

Des	Start Date	Top (ftKB)	Btm (ftKB)
Surface Casing Cement	10/22/1993	13.0	548.0
Surface Casing Cement	10/22/1993	13.0	85.0
Production Casing Cement	10/28/1993	3,589.0	5,500.0
Production Casing Cement	10/28/1993	6,169.0	7,110.0

Zone Statuses

Zone Name	Status Date	Status	Fluid Type	Job	Prod Method
CODELL	5/26/2006	SI		RE-FRAC, 5/26/2006 00:00	
CODELL	7/13/2006	PR		COMMINGLE ZONES, 7/10/2006 00:00	
NIOBRARA	6/23/2006	PR		RE-FRAC, 5/26/2006 00:00	
NIOBRARA	7/13/2006	PR		COMMINGLE ZONES, 7/10/2006 00:00	

Perforation Data

Linked Zone	Bnch/Stg	Entered Shot Total	Top (ftKB)	Btm (ftKB)	Date
NIOBRARA, ORIGINAL HOLE		84	6,690.00	6,704.00	5/31/2006
NIOBRARA, ORIGINAL HOLE		2	6,701.00	6,703.00	11/2/1993
NIOBRARA, ORIGINAL HOLE		108	6,760.00	6,778.00	5/31/2006
NIOBRARA, ORIGINAL HOLE		4	6,770.00	6,774.00	11/2/1993
CODELL, ORIGINAL HOLE		9	6,960.00	6,969.00	11/2/1993
CODELL, ORIGINAL HOLE		52	6,961.00	6,973.00	5/6/2002

Stimulation Intervals

Zone	Start Date	Top (ftKB)	Btm (ftKB)
NIOBRARA, ORIGINAL HOLE	6/22/2006	6,690.0	6,778.0
NIOBRARA-CODELL, ORIGINAL HOLE	11/8/1993	6,701.0	6,969.0
CODELL, ORIGINAL HOLE	5/13/2002	6,961.0	6,973.0

Other In Hole

Run Date	Des	Make	OD (in)	Top (ftKB)	Btm (ftKB)

Logs

Date	Type	Top, MD (ftKB)	Btm, MD (ftKB)
10/27/1993	COMPENSATED DENSITY	4,290.0	7,139.0
10/27/1993	INDUCTION	550.0	7,139.0
11/2/1993	GAMMA RAY	6,500.0	7,037.0
2/5/2011	GYRO	13.0	6,900.0

Plug Back Total Depths

Date	Type	Com	Depth (ftKB)
11/10/1993	FILL	CLEAN OUT	7,050.0
7/10/2006	FILL	CLEAN OUT SAND PLUG	7,050.0