



Gamma Ray

LWD MEMORY LOG

Scale:

1:240

True Vertical Depth

Company: Noble Energy

Well: Gutteresen D10-735

Field: Watterberg

County: WELD Country: United States

State: Colorado

Driller's Depth

Status:

Final Print

Surface Location:

Latitude:

Longitude:

40° 15' 46.908" N

104° 32' 01.428" W

Other Services:

API No: 05-123-48914-00

Job ID: 111201935

SEC:

34

TWN:

4N

RGE:

64W

Permanent Datum (P.D.): Mean Sea Level

Log Measured From: Rig Floor

Elevation:

Above P.D.:

0.00 ft

4727.00 ft

Elev. KB:

Elev. DF:

N/A

4697.00 ft

Dates

From: 2022-02-16
To: 2022-02-16
Spud: 2022-02-03

Drilled (ft)

Top: 1938.00

Bottom: 17315.00

Logged (ft)

Top: 1938.00

Bottom: 17302.00

Azi Reference North:

Total Magnetic Field Strength: (nT)

Mag to Reference North Correction: (deg)

Grid Dip Angle: (deg)

66.57

51770

7.25

Borehole Record

Casing Record

Hole Size (in)

13.500

8.500

From (ft)

30.00

1938.00

To (ft)

1938.00

17315.00

Size (in)

9.625

Weight (lb/ft)

36.00

From (ft)

30.00

To (ft)

1928.00

Mud Record

Deviation Record

Type

Oil Based Mud

From (ft)

1938.00

To (ft)

17315.02

Hole Size (in)

8.500

Interval (ft)

15377.02

Inc | Az (Start)

0.43 | 252.26

Inc | Az (End)

90.04 | 181.01

Acquisition System

Cadence

Plot Studio

Software Version

RT 6.3

6.3.9444.1

Other

Rig:

Contractor:

District:

H&P 517

Helmerich & Payne Drilling Co

RMA

Unit: D&E

(C) 2022 Baker Hughes Company - All rights reserved. Baker Hughes and its affiliates provides this information on an "as is" basis for general information purposes and believes it to be accurate as of the date of publication. Baker Hughes does not make any representation as to the accuracy or completeness of the information and makes no warranties of any kind, specific, implied or oral, to the fullest extent permissible by law, including those of merchantability and fitness for a particular purpose or use. Baker Hughes hereby disclaims any and all liability for any direct, indirect, consequential or special damages, claims for lost profits, or third party claims arising from the use of the information, whether a claim is asserted in contract, tort, or otherwise. The Baker Hughes logo is a trademark of Baker Hughes Company.

Log Run Summary

Run No	Bit Run No.	Bit Size (in)	Bit Type	Bit Gauge Length (in)	Assembly Type	Logged Interval		Bit Depth Interval		Date / Time		Circ. Hours (h)
						Top (ft)	Bottom (ft)	From (ft)	To (ft)	Start Logging	End Logging	
1	1	8.500	PDC	3.00	AutoTrak Curve	1938.00	17302.00	1938.00	17315.00	2022-02-14 08:50	2022-02-16 11:52	48.64

Crew

Name	Arrive Wellsite	Depart Wellsite	Name	Arrive Wellsite	Depart Wellsite	Name	Arrive Wellsite	Depart Wellsite
------	-----------------	-----------------	------	-----------------	-----------------	------	-----------------	-----------------

Mud Properties Record											
Date / Time	Run No.	Depth (ft)	Mud Type	Density (ppg)	Viscosity (cP)	pH	Fluid Loss (cm3)	Oil / Water	Source	Total Chlorides (ppm)	K+ (%)
2022-02-14 05:00	1	1938.00	Oil Based Mud	9.7	13	N/A	16.0	69.4/18.8	Active Pit	29000	0.00
2022-02-15 09:35	1	8560.00	Oil Based Mud	9.8	13	N/A	17.5	80.4/19.6	Active Pit	24500	0.00
2022-02-16 08:10	1	16300.00	Oil Based Mud	10.1	15	N/A	19.0	79.5/20.5	Active Pit	26500	0.00

Run No.	Tool	Serial Number	Measurement	Sensor Offset (ft)	Bit Offset (ft)	Max O.D. (in)	Min I.D. (in)
1	AutoTrak Curve Steering Unit	14986107	Near Bit VSS	5.93	6.78	6.750	4.330
1	AutoTrak Curve Steering Unit	14986107	Near Bit Inclination	5.93	6.78	6.750	4.330
1	AutoTrak Curve MWD	12188140	Gamma (single)	2.78	12.95	6.750	3.250
1	AutoTrak Curve MWD	12188140	Directional (mag)	12.27	22.44	6.750	3.250

Mnemonic	Name	Description
ATC SU	AutoTrak Curve SU	Auto Trak Curve Steering Unit
ATC MWD	AutoTrak Curve MWD	Auto Trak Curve MWD
ATC LCPM	AutoTrak Curve LCPM	Auto Trak Curve LCPM

- 1 Baker Hughes Company run 1 utilized 6 ¾ inch NaviGamma services (Gamma Ray and Directional) behind an 8 ½ inch PDC bit and rotary steerable assembly from 1938 to 17315 feet MD (1938 to 6734 feet TVD).
- 2 The Gamma Ray Apparent (GRAM) data is presented 0 to 300 API, per the customer's request.
- 3 Depth measurements were obtained from a depth control system not supplied or operated by Baker Hughes. Due to a lack of control by Baker Hughes logging engineers, depth calibrations and measurements could not be independently verified and the unverified depths as supplied to Baker Hughes are being used to present logging data.

Number	Depth (ft)	Hole Section (in)	Run No.	Remark
--------	---------------	-------------------------	------------	--------

Presented Curves	Description	Units
ROPA	Depth Averaged ROP 3 ft Average	ft/h
WOBA	Weight On Bit, Average 1 ft Average	kib
GRAM	Gamma Ray - Apparent - Memory 0.5 ft Average	API
TCDM	Directional Real-Time Survey Temperature	degF

Gamma Ray - Apparent 0.5 ft Average GRAM 0 300		TVD 1:240 feet	Depth Averaged ROP 3 ft Average ROPA 1000 0		Weight On Bit, Average 1 ft Average WOBA 0 50	
API			ft/h		klb	
					Downhole Temperature TCDM 0 300	
		1900				

9 5/8" Casing

>R1

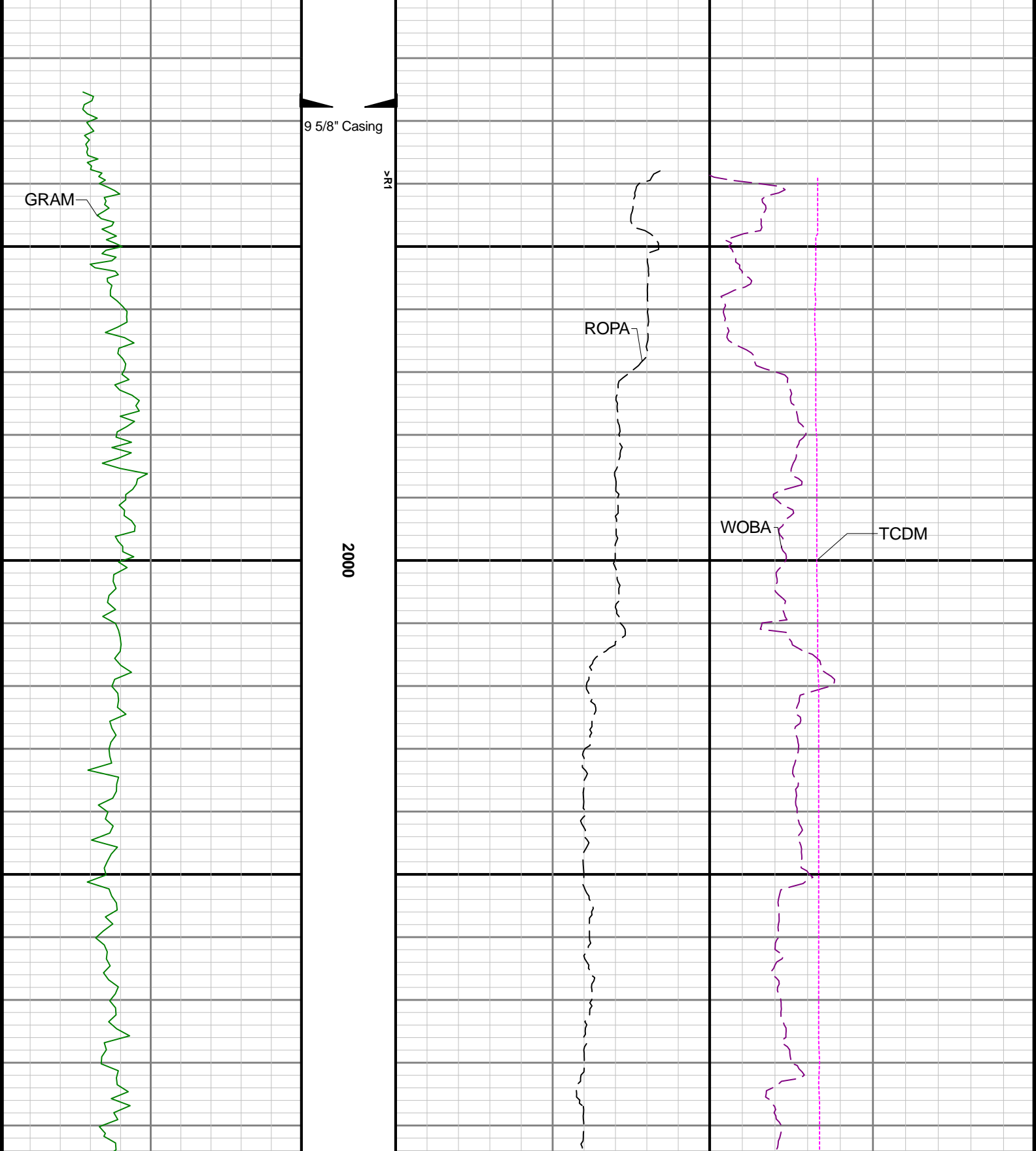
GRAM

ROPA

WOBA

TCDM

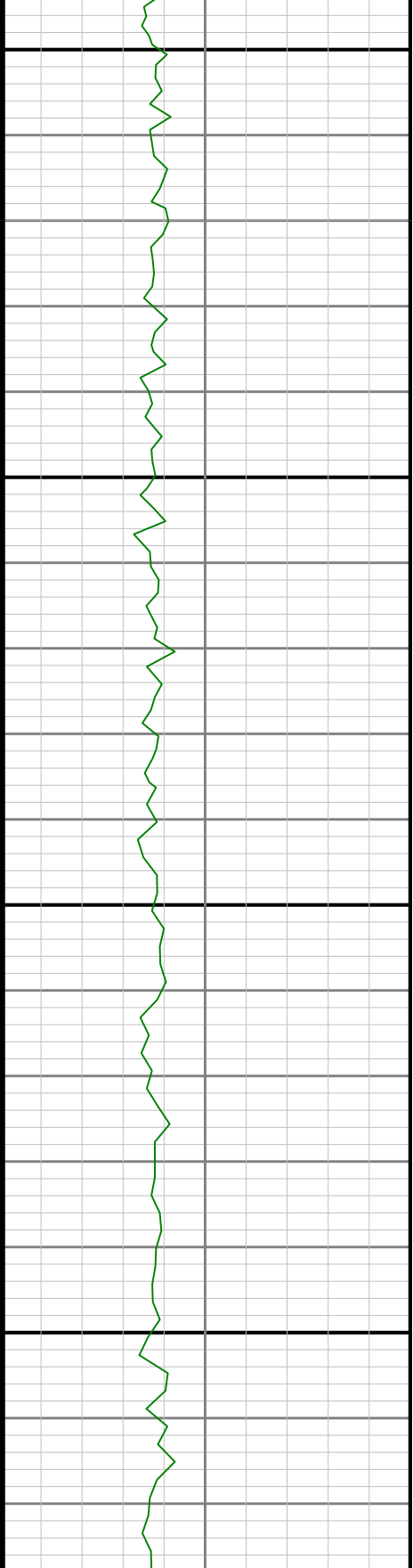
2000

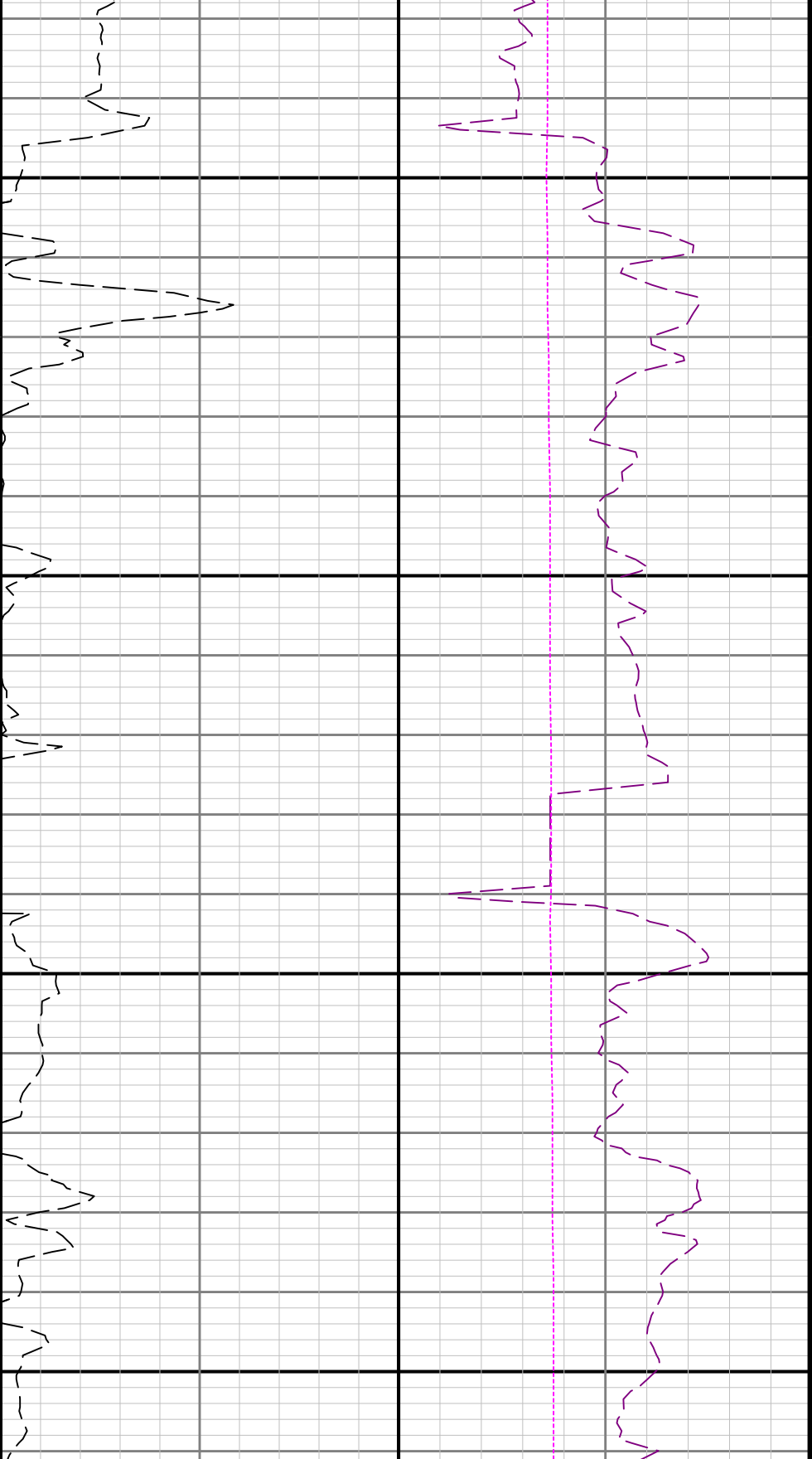




2100

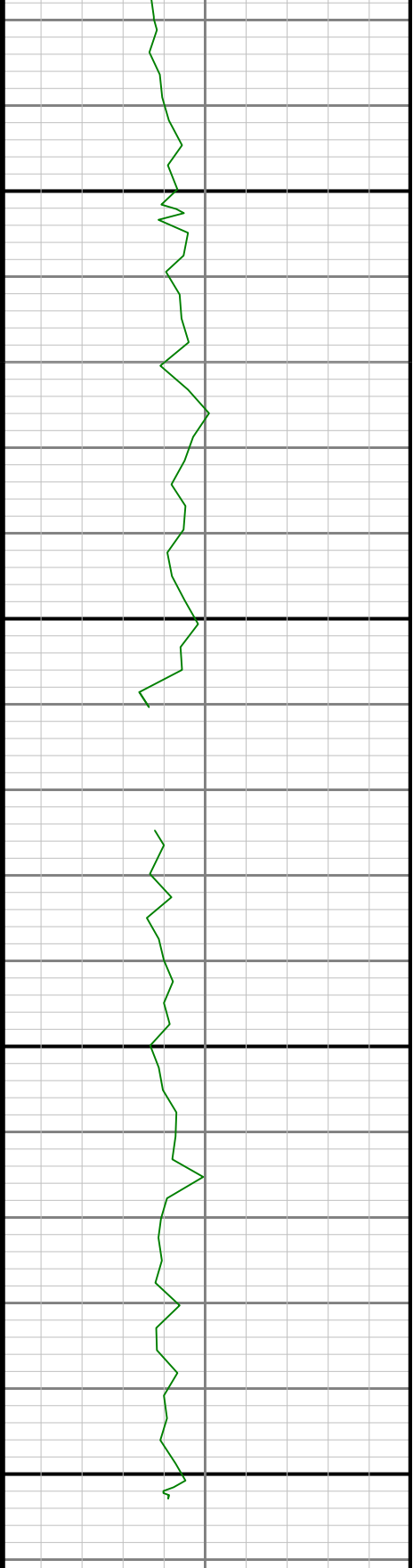
2200

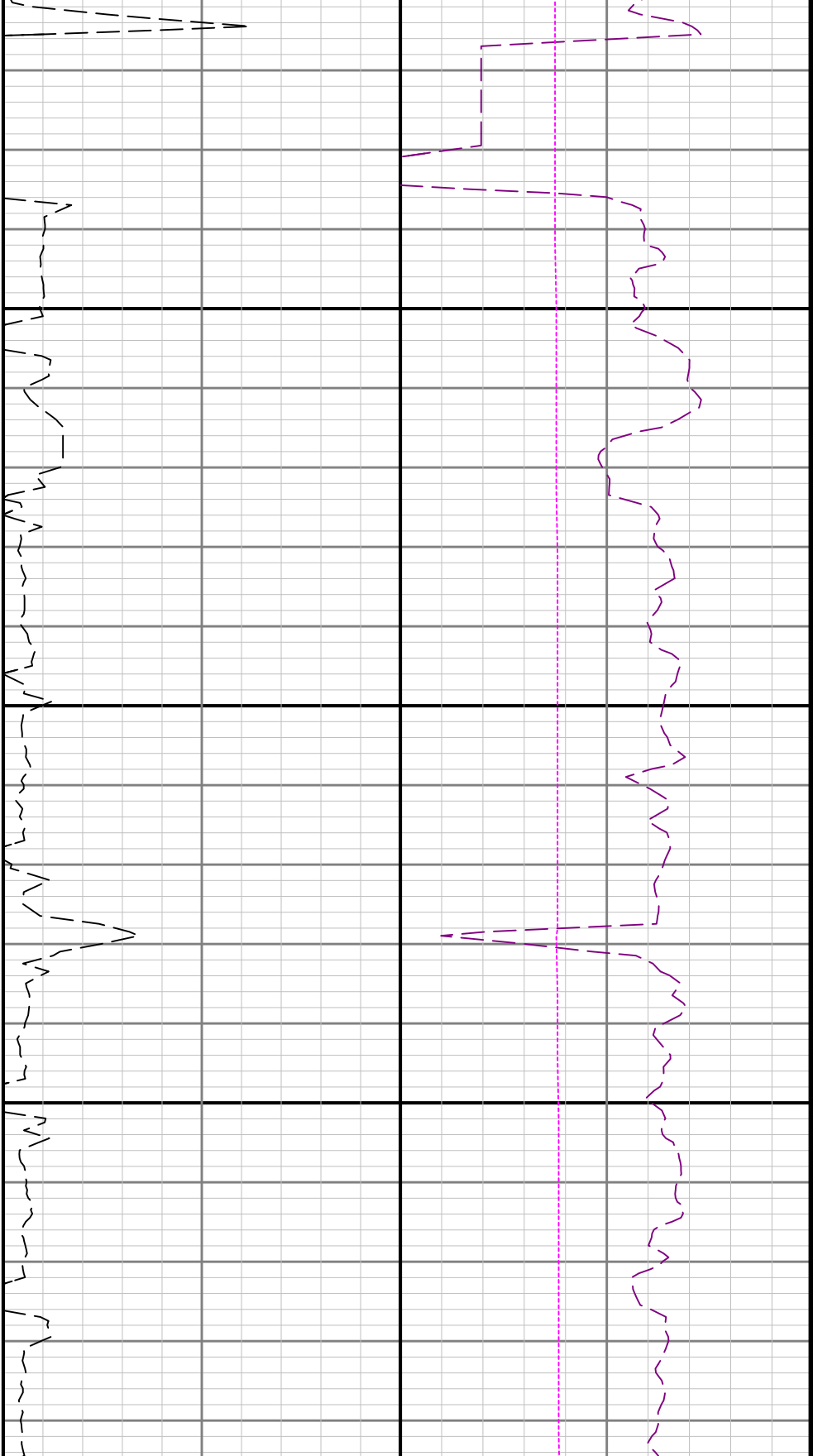




2300

2400

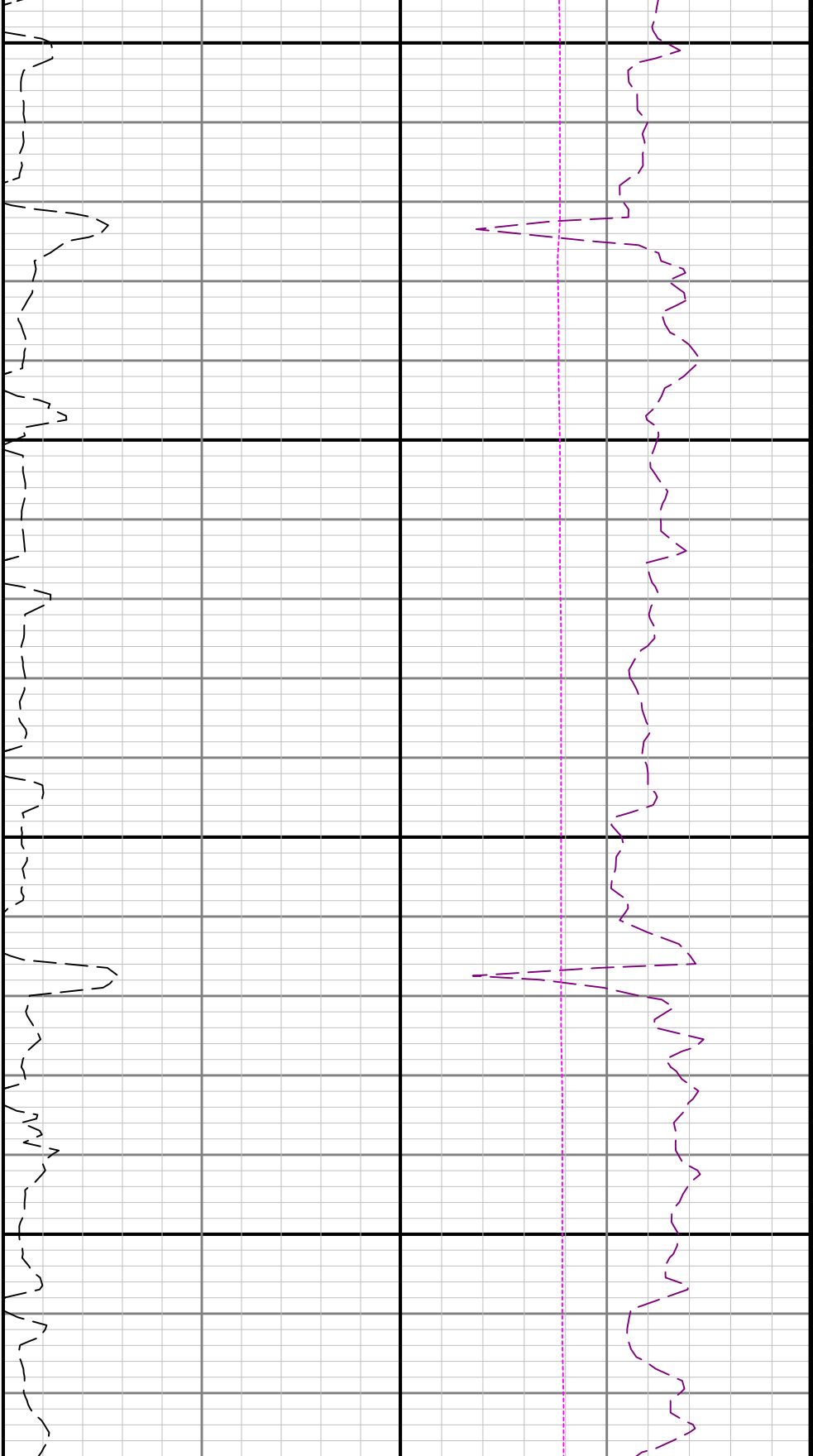




2500

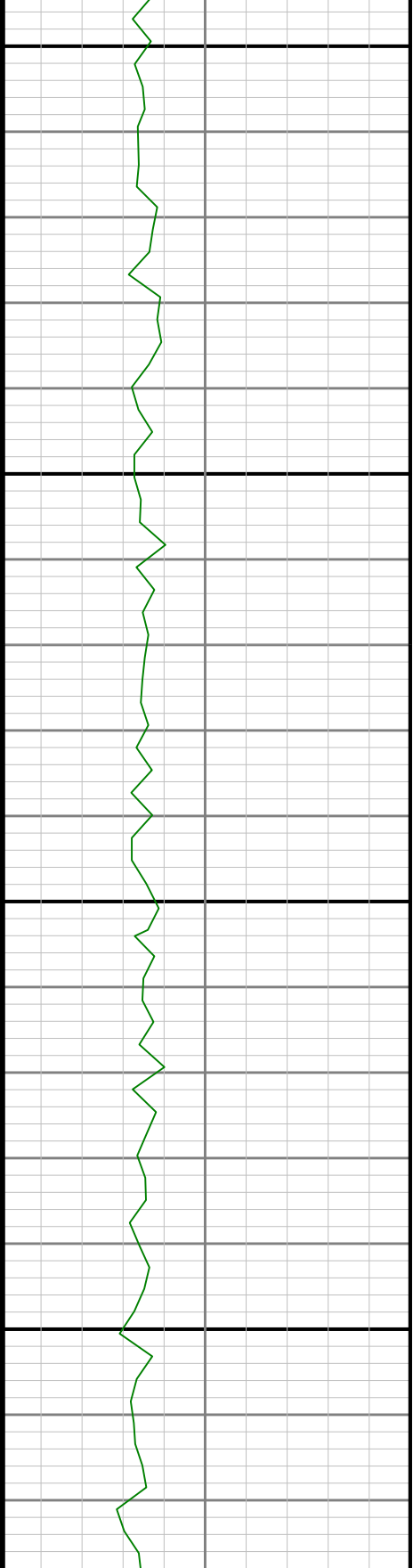
2600

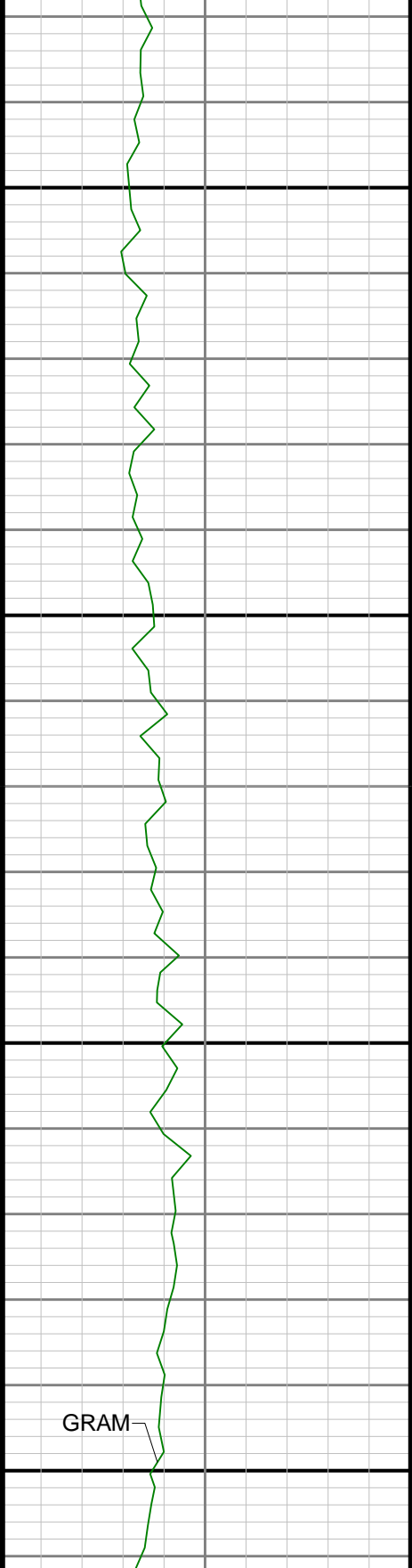




2700

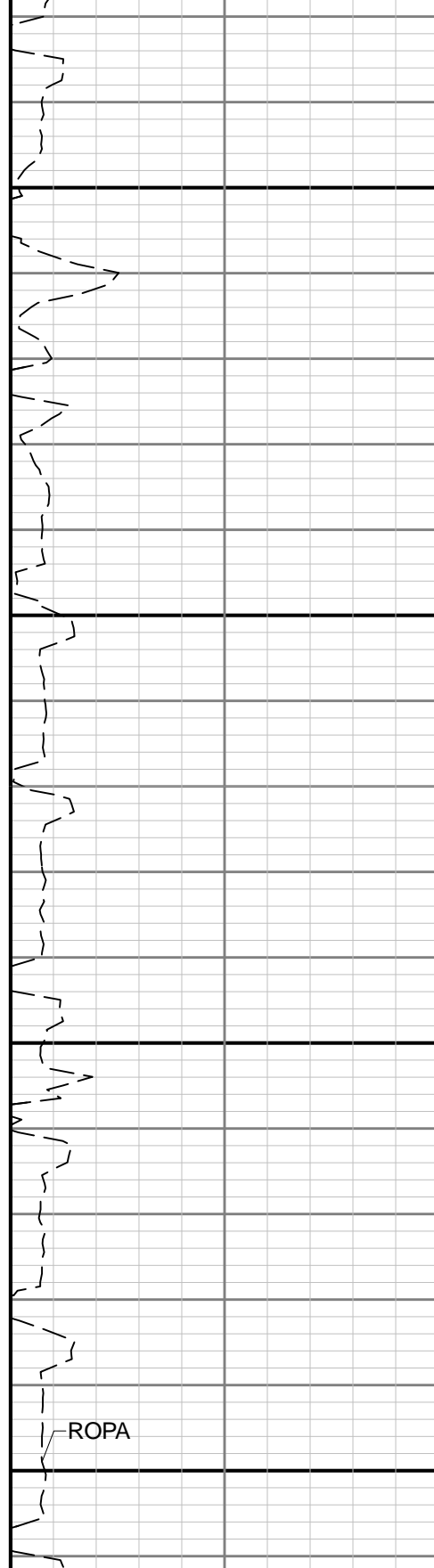
2800



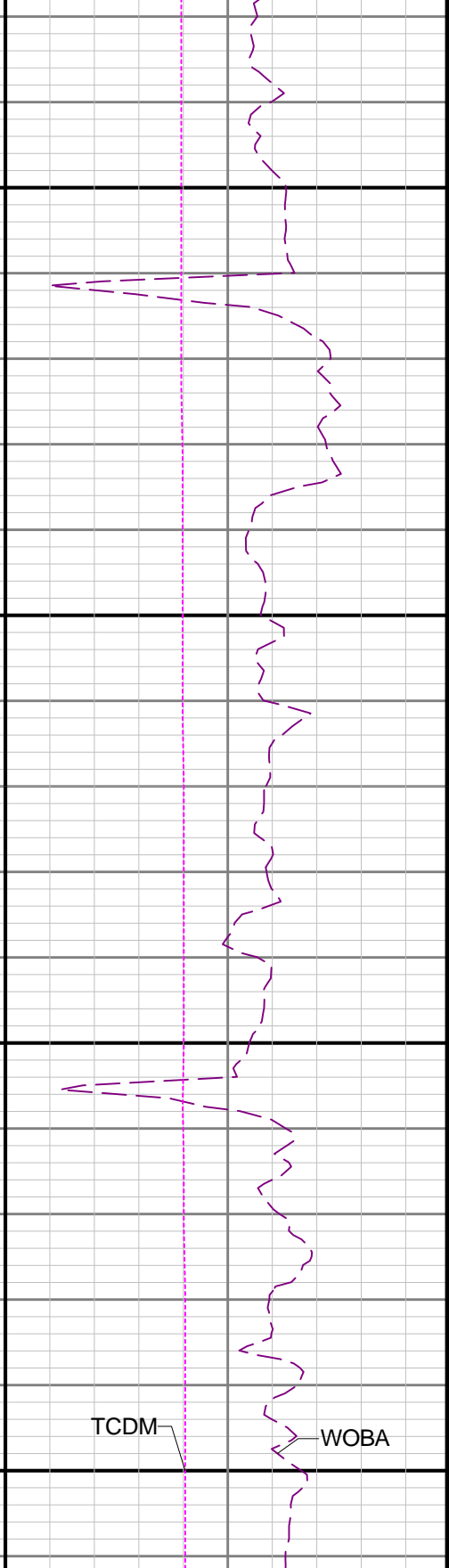


2900

3000

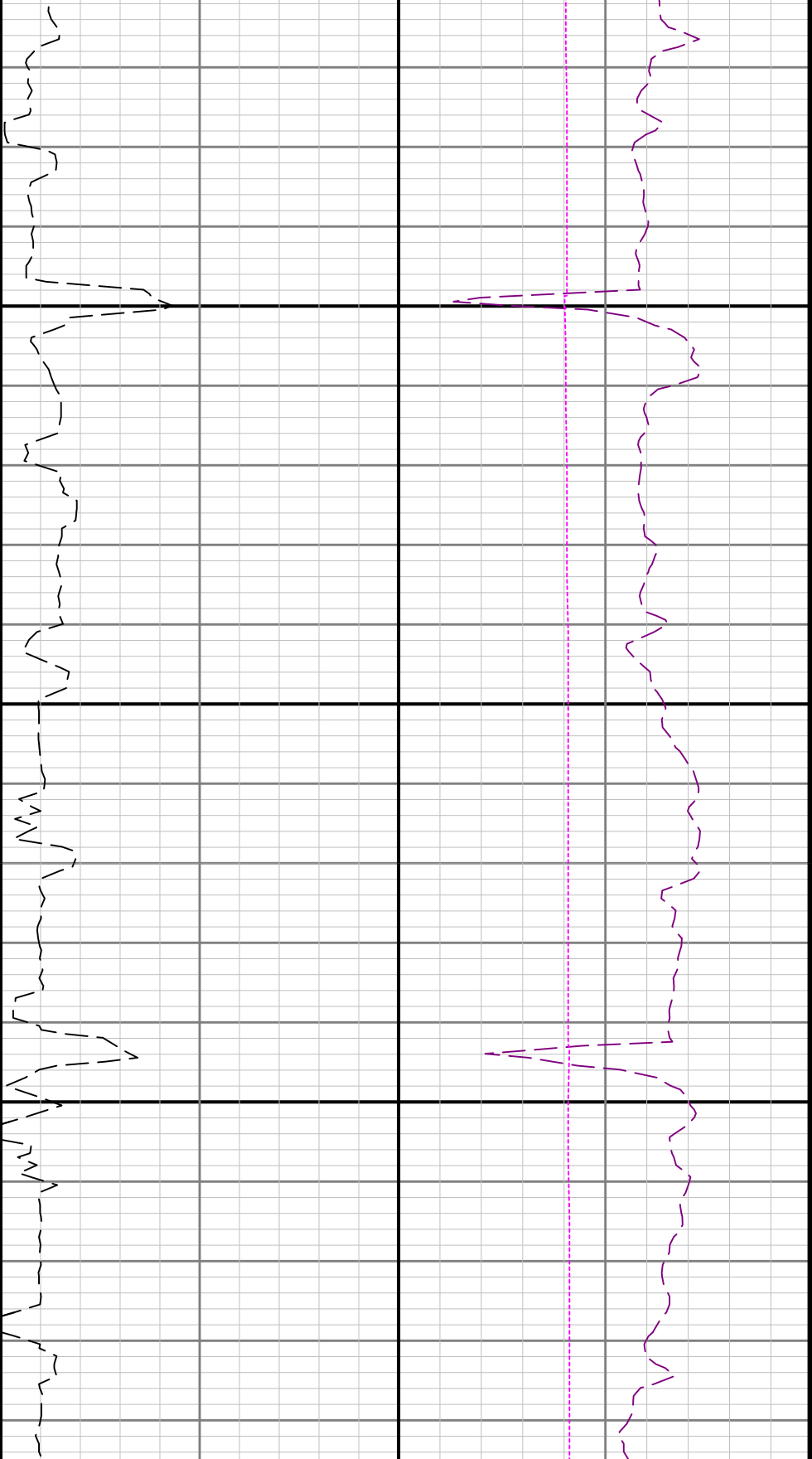


ROPA

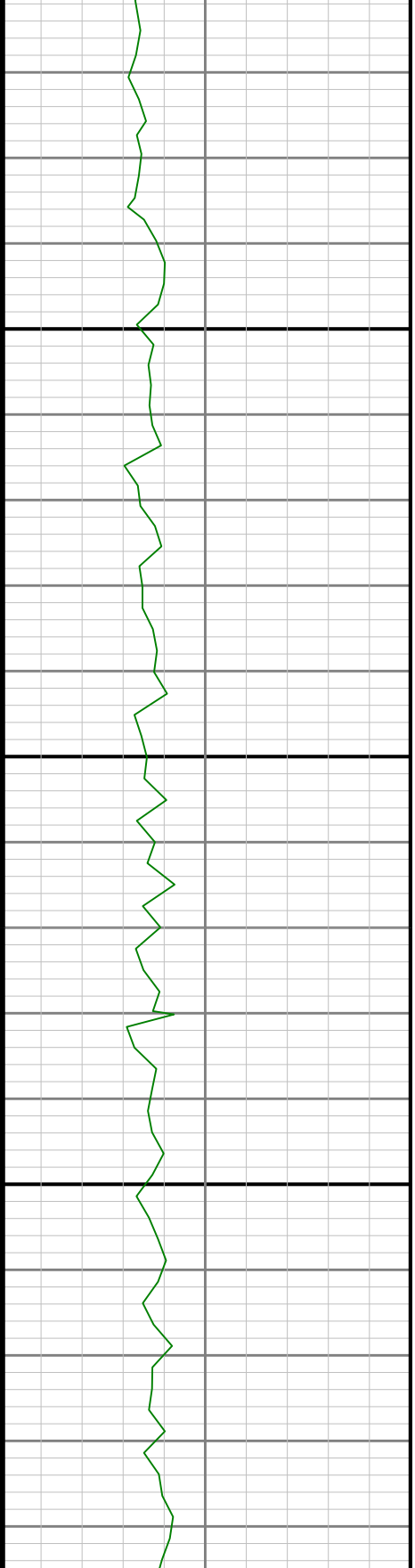


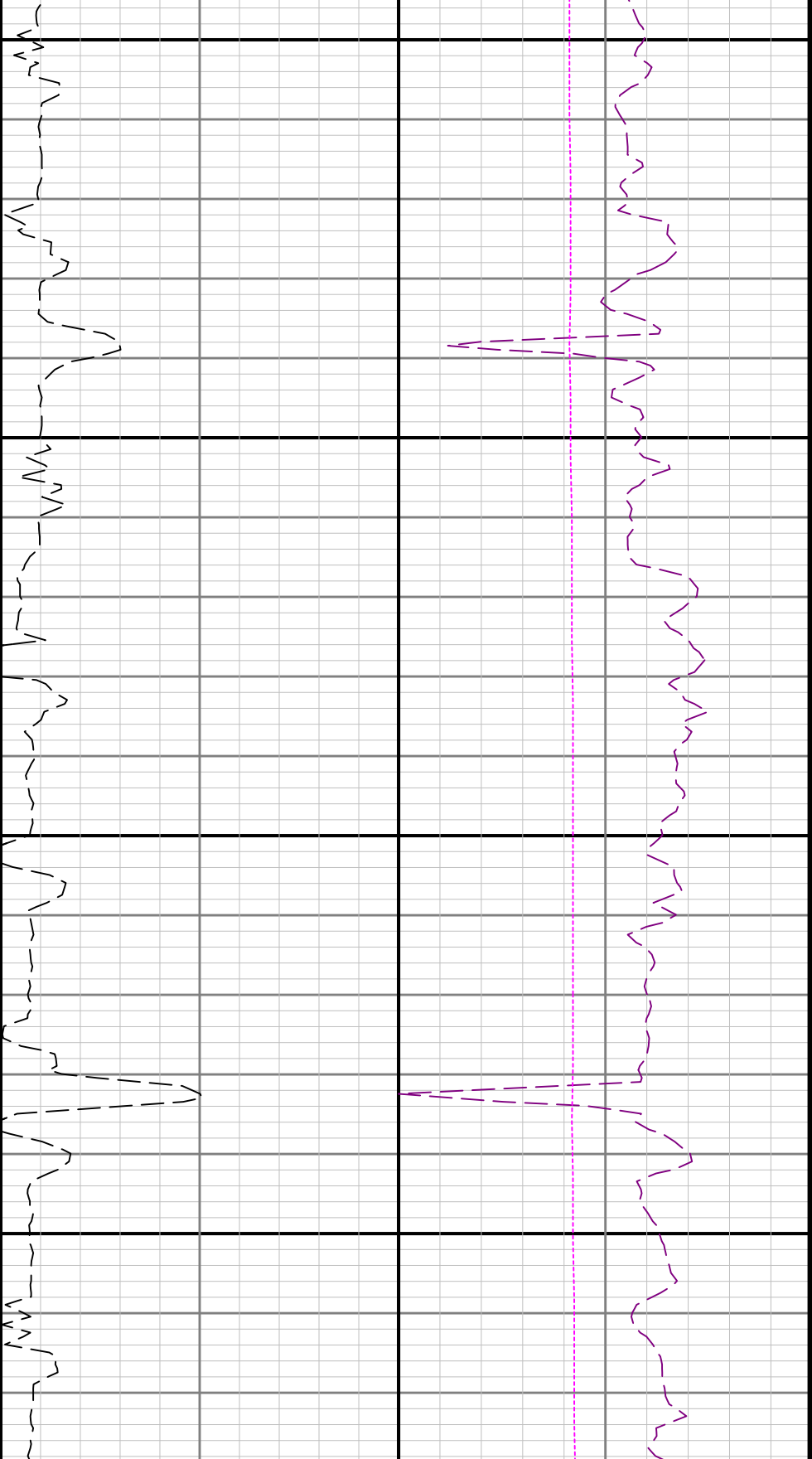
TCDM

WOBA



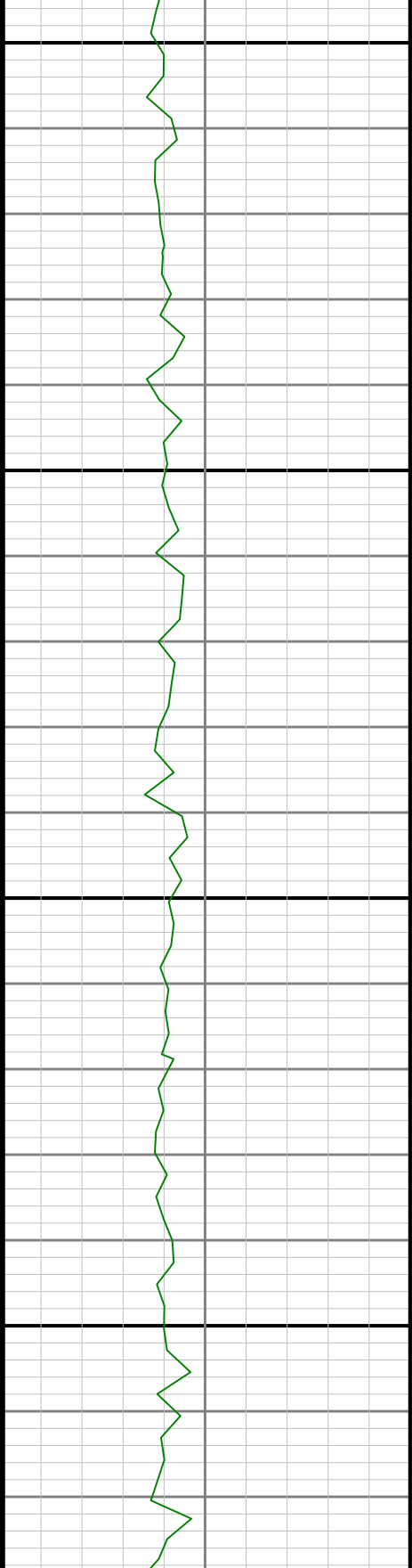
3100

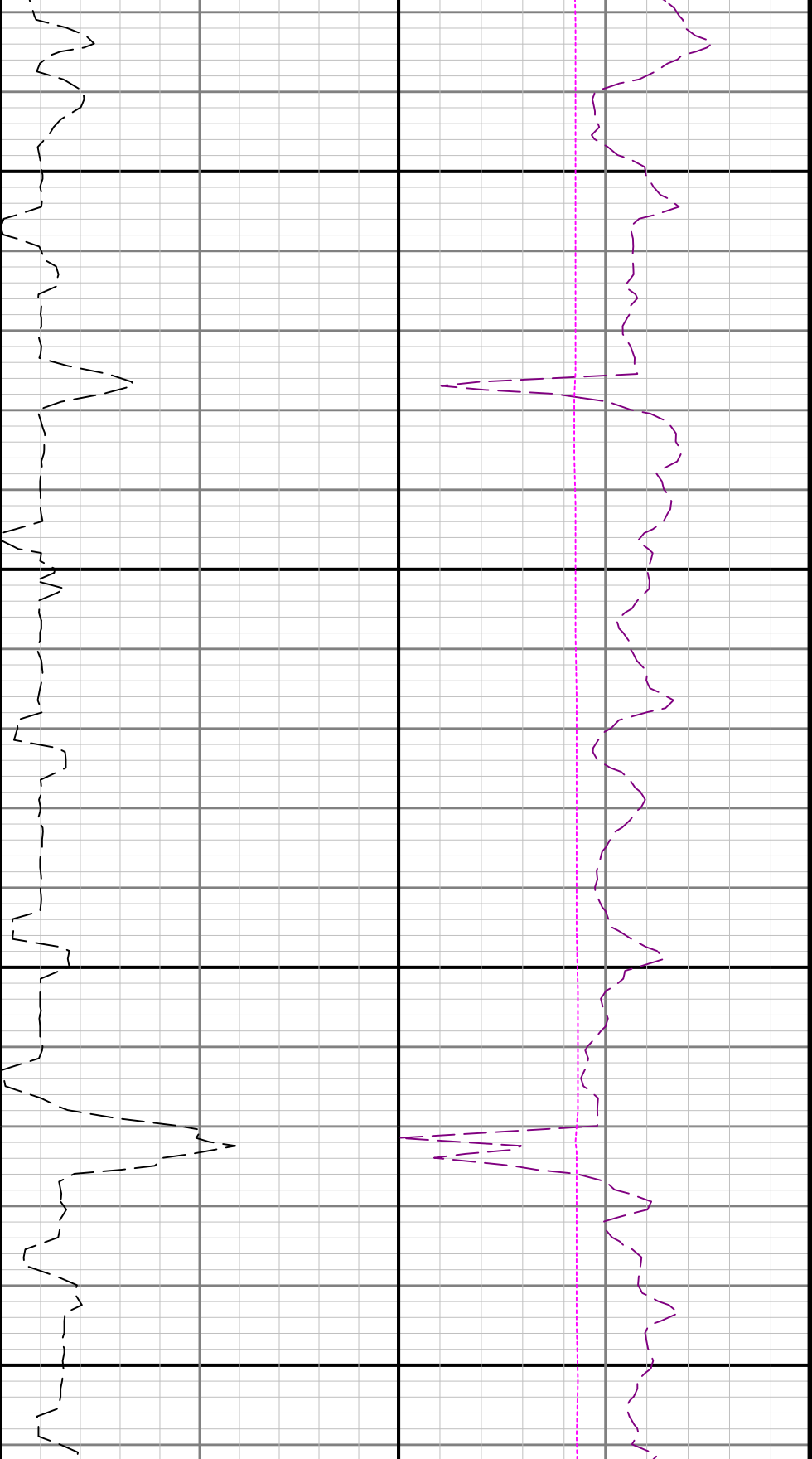




3200

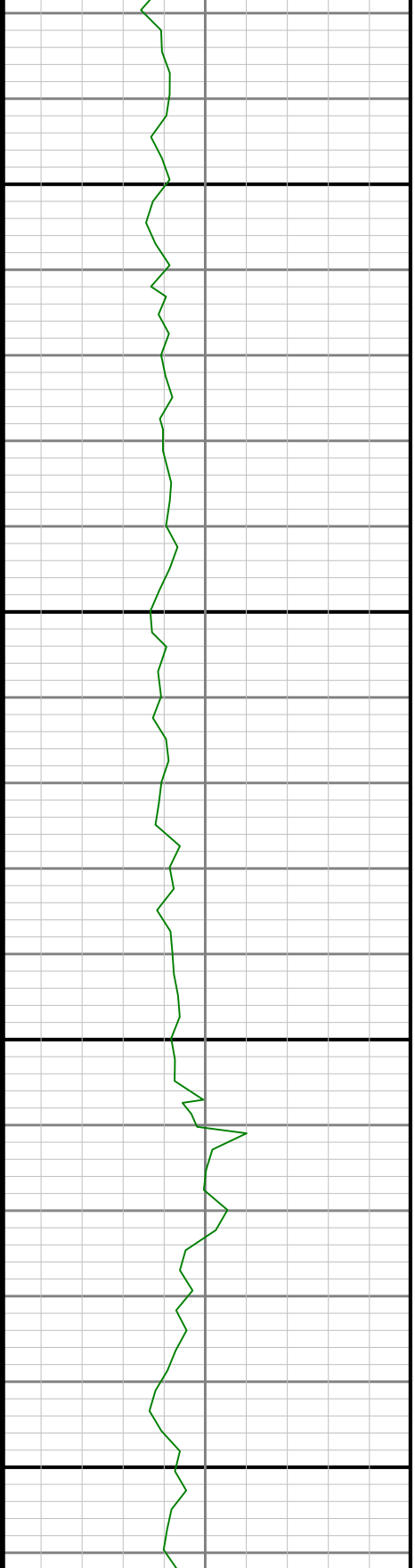
3300

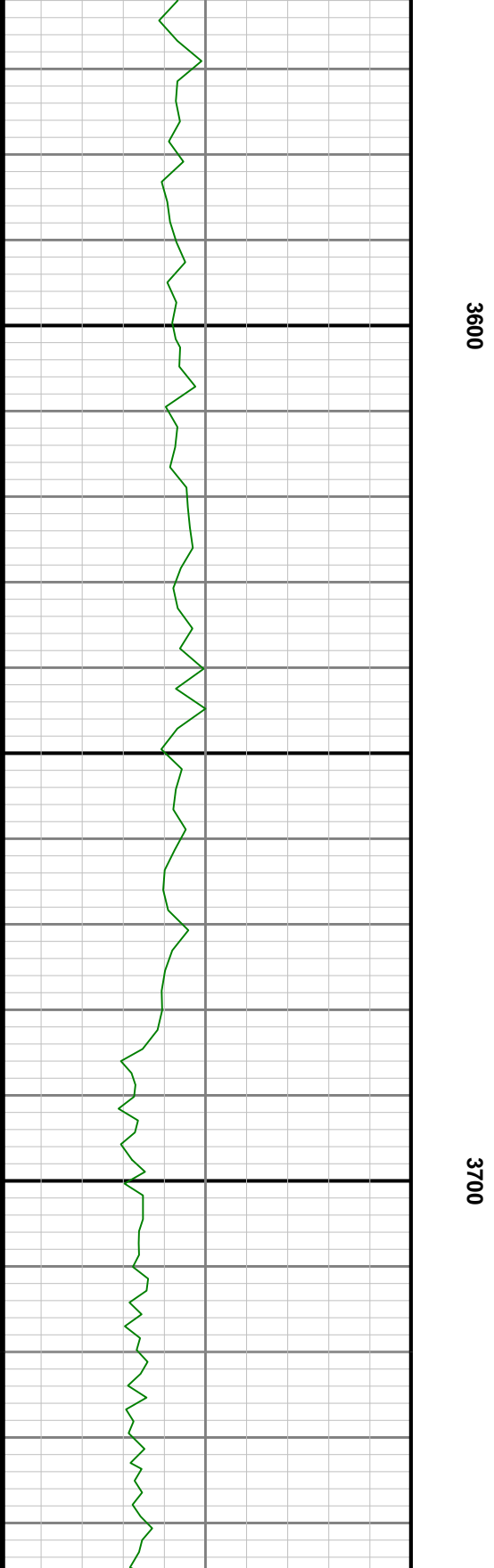
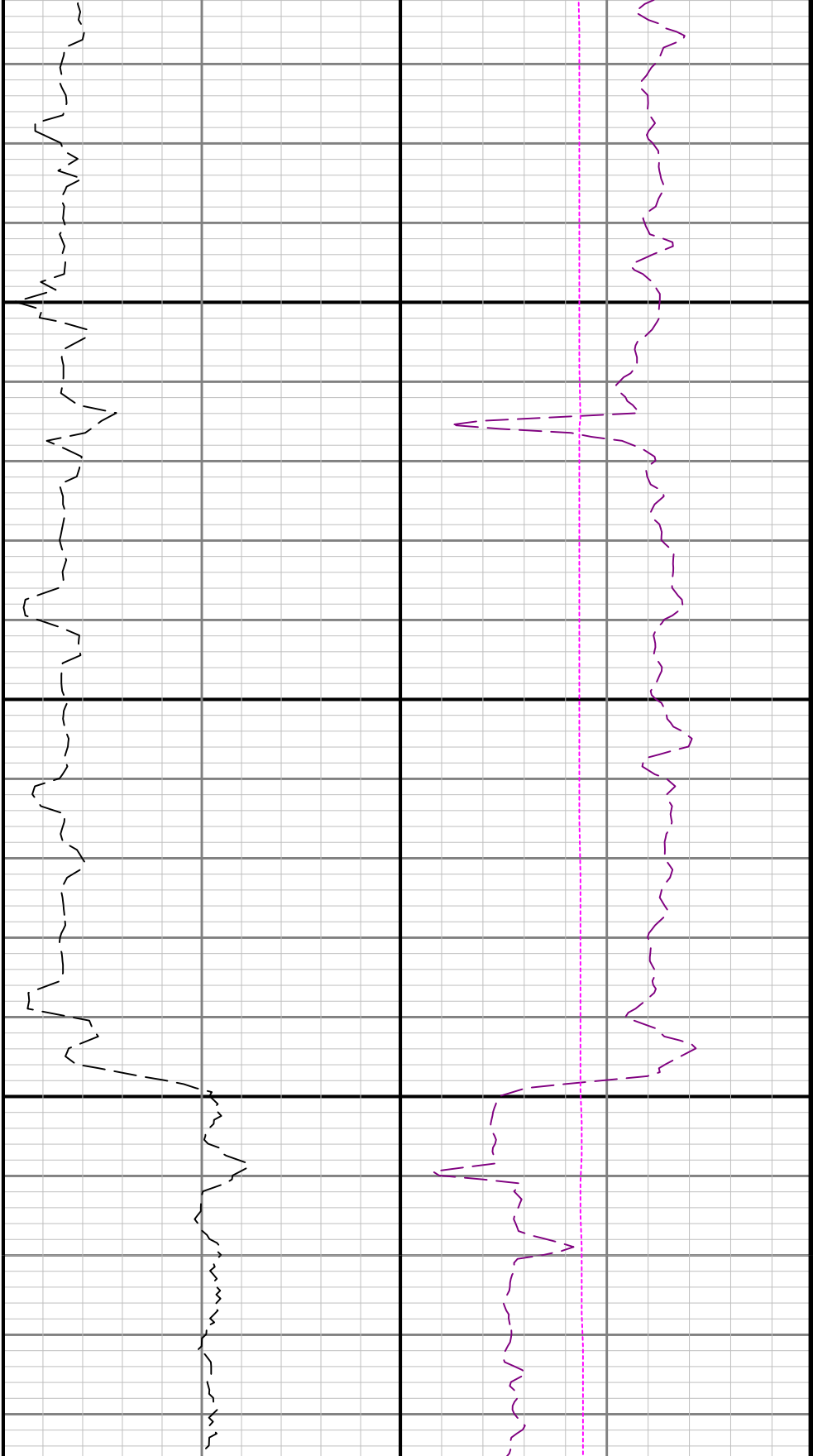


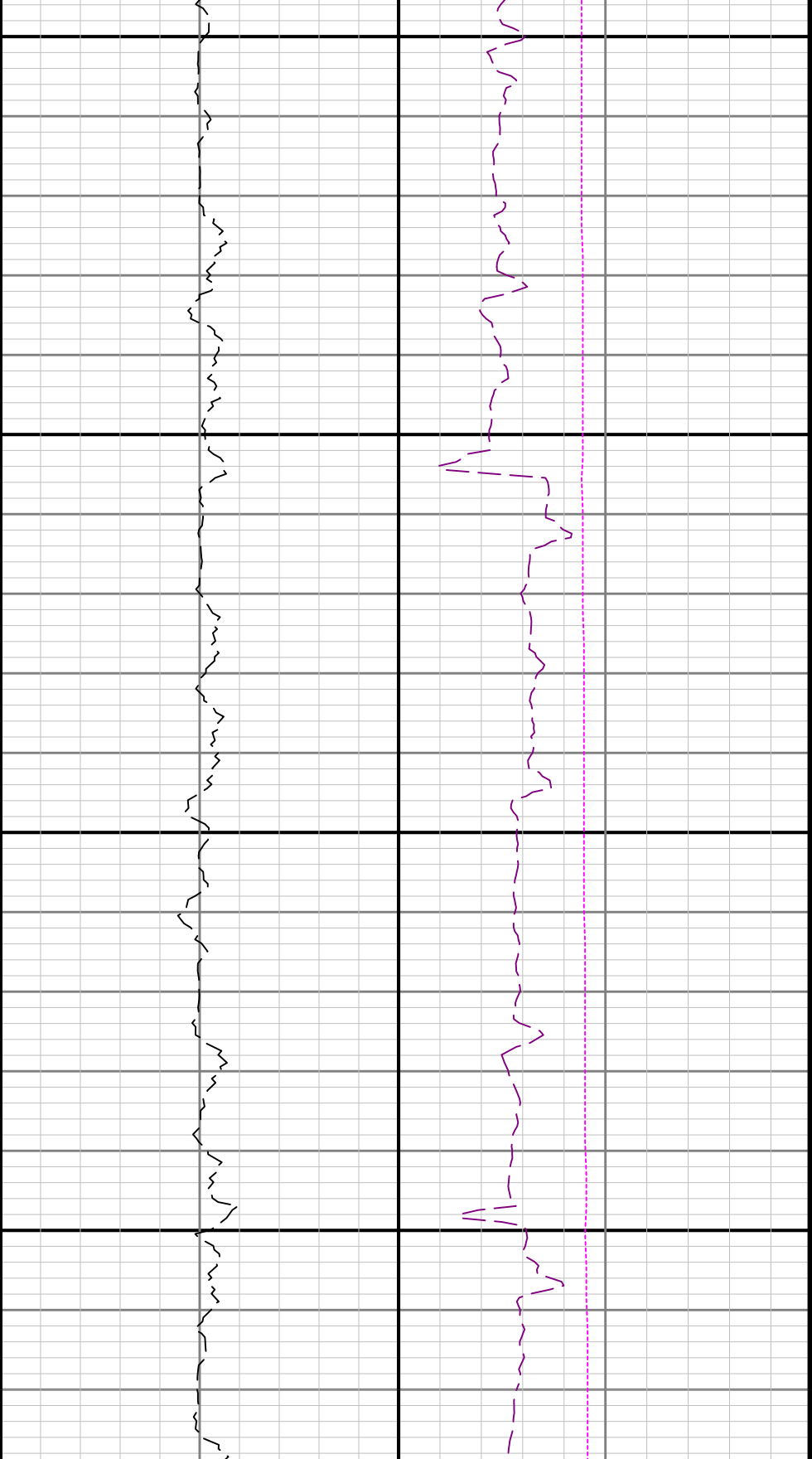


3400

3500

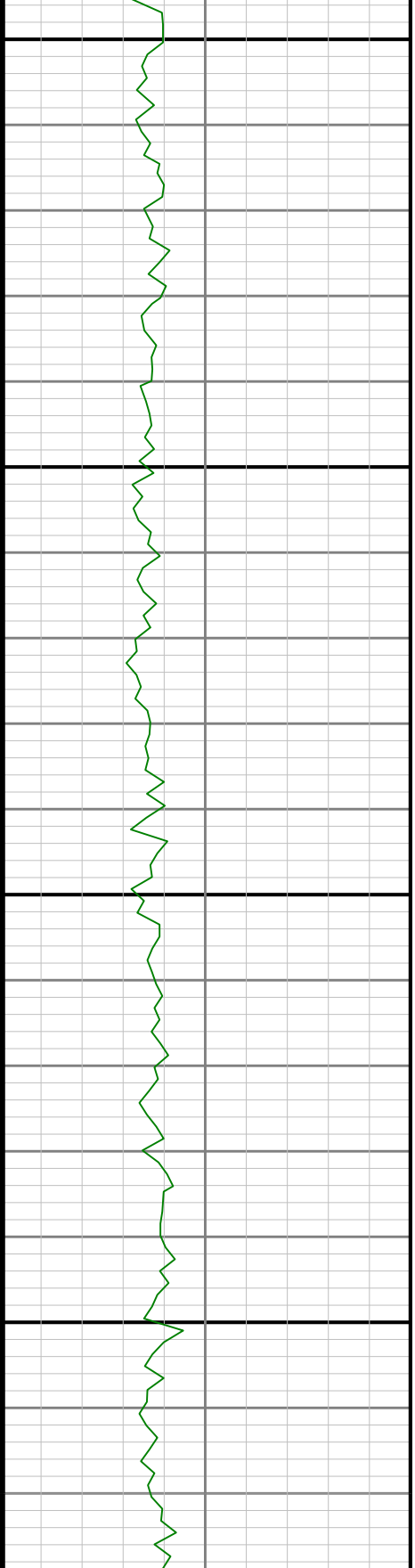


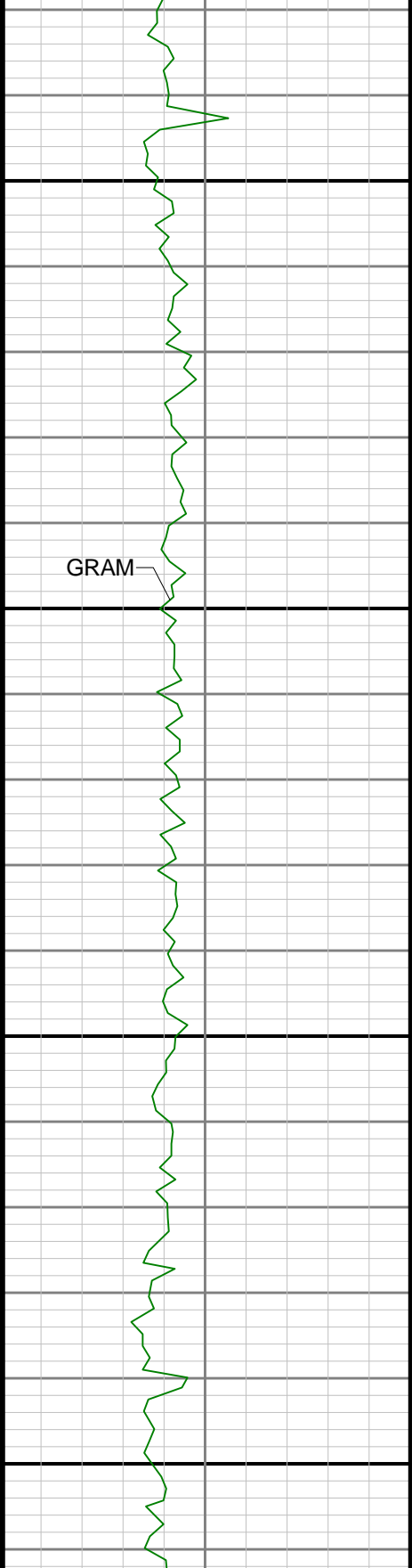




3800

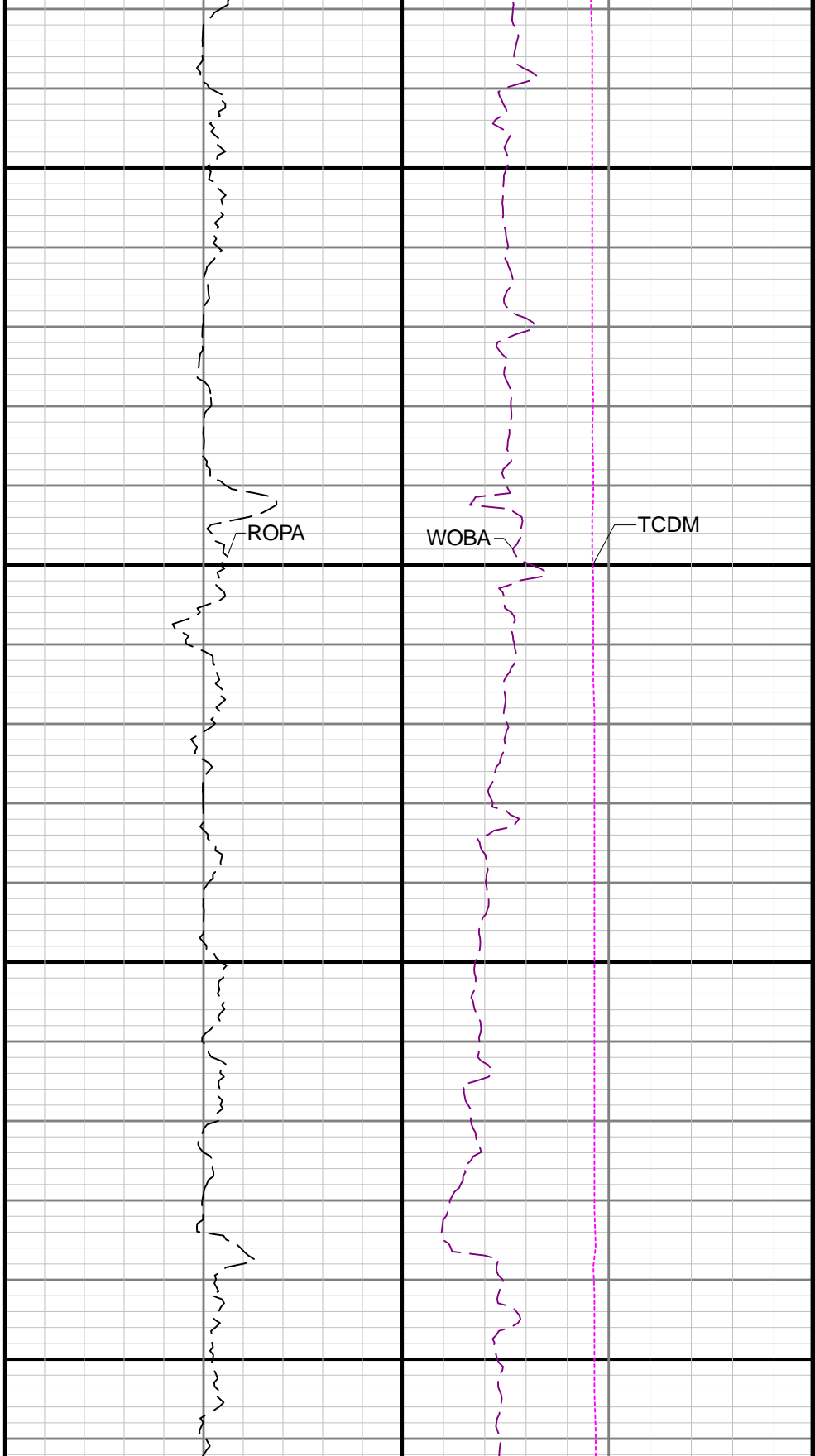
3900

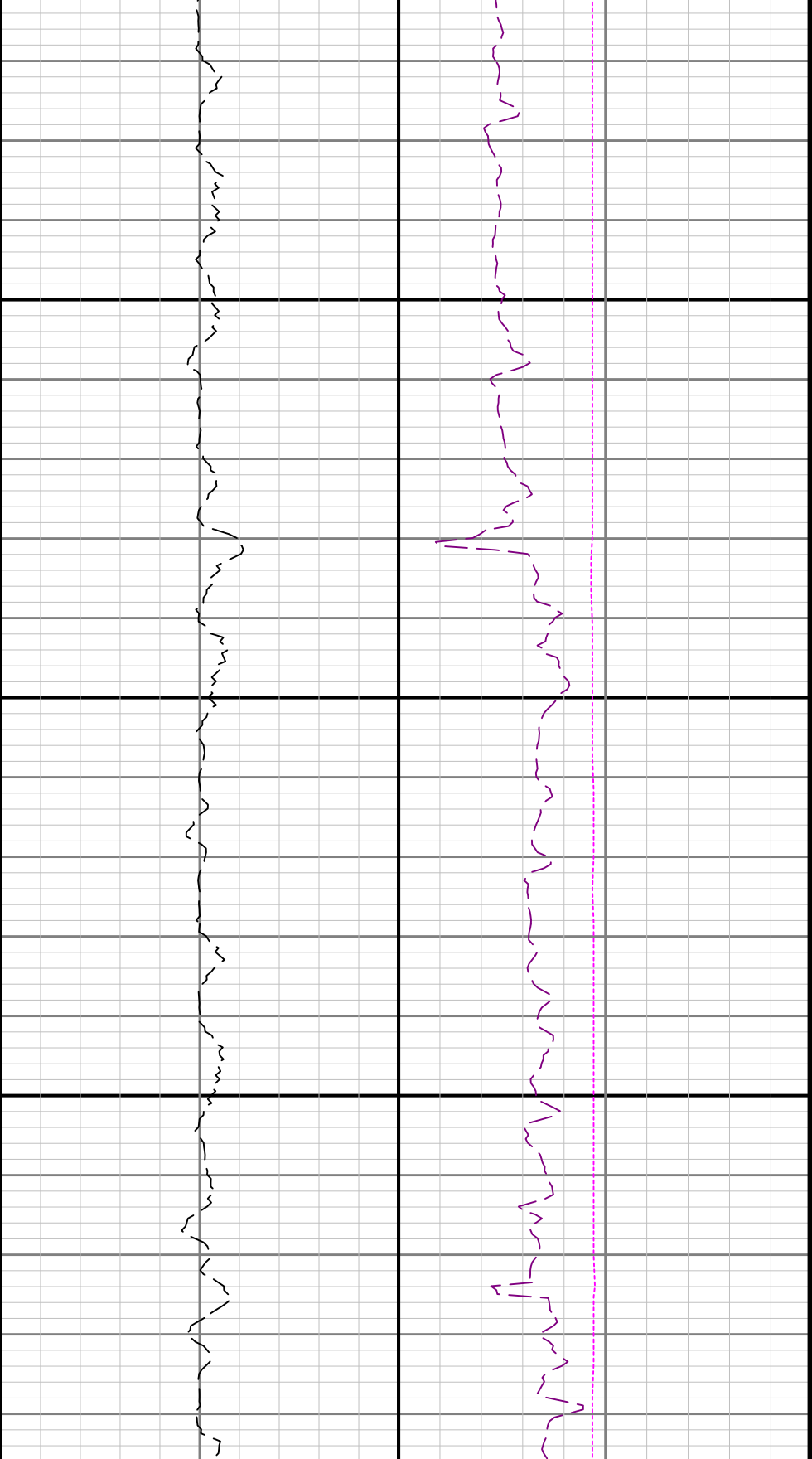




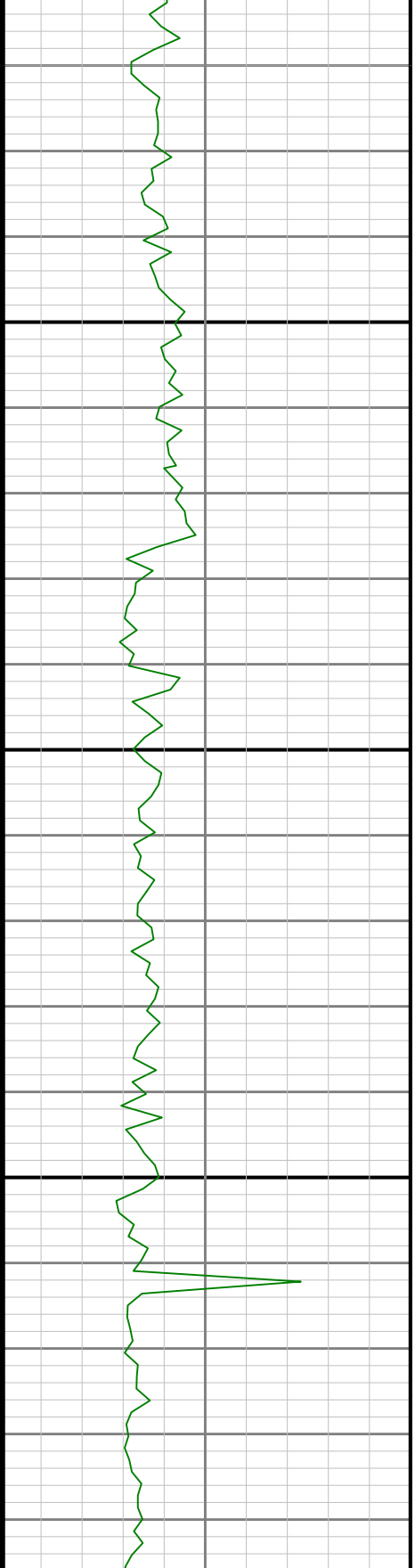
4000

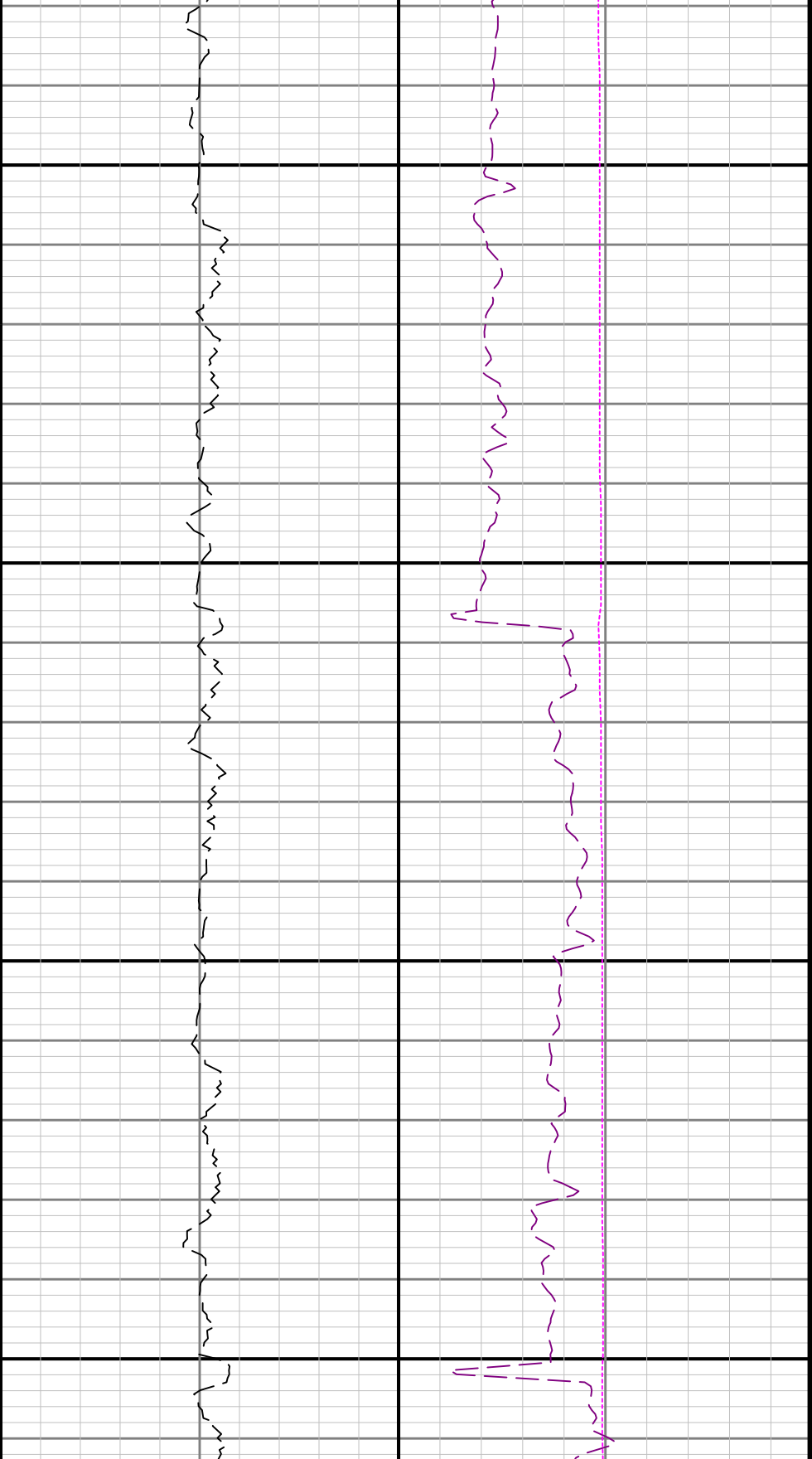
4100





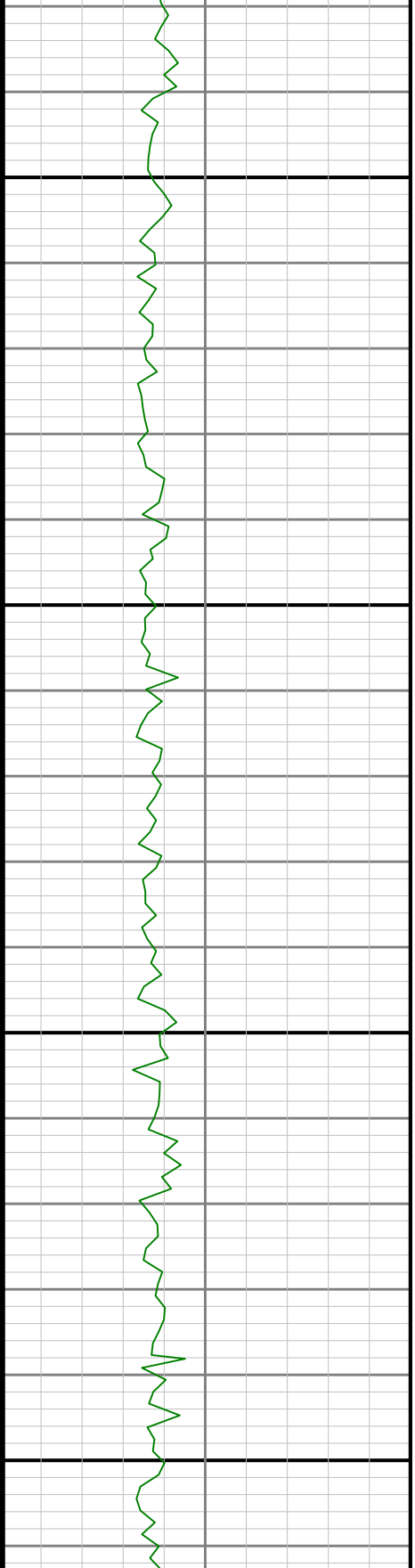
4200

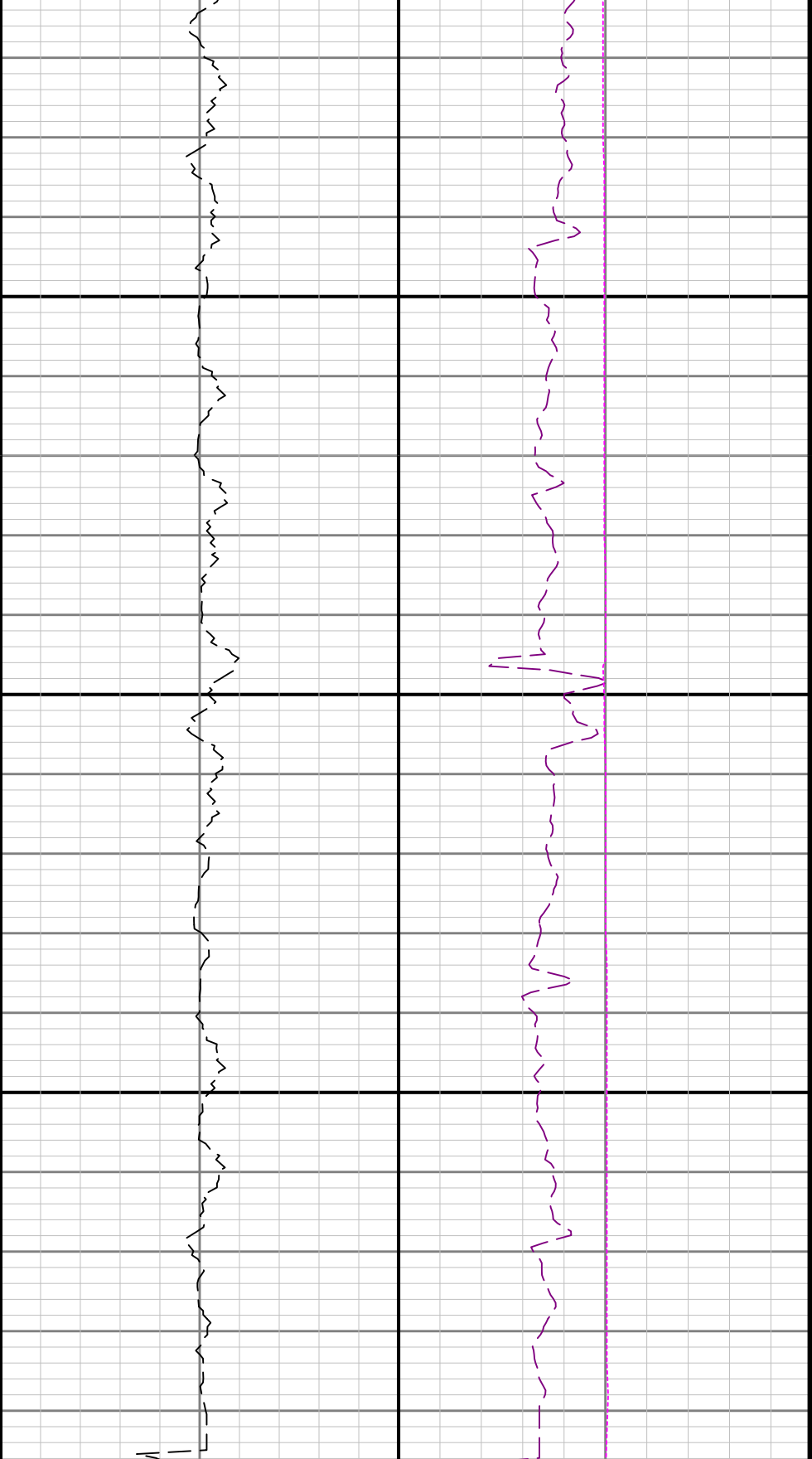




4500

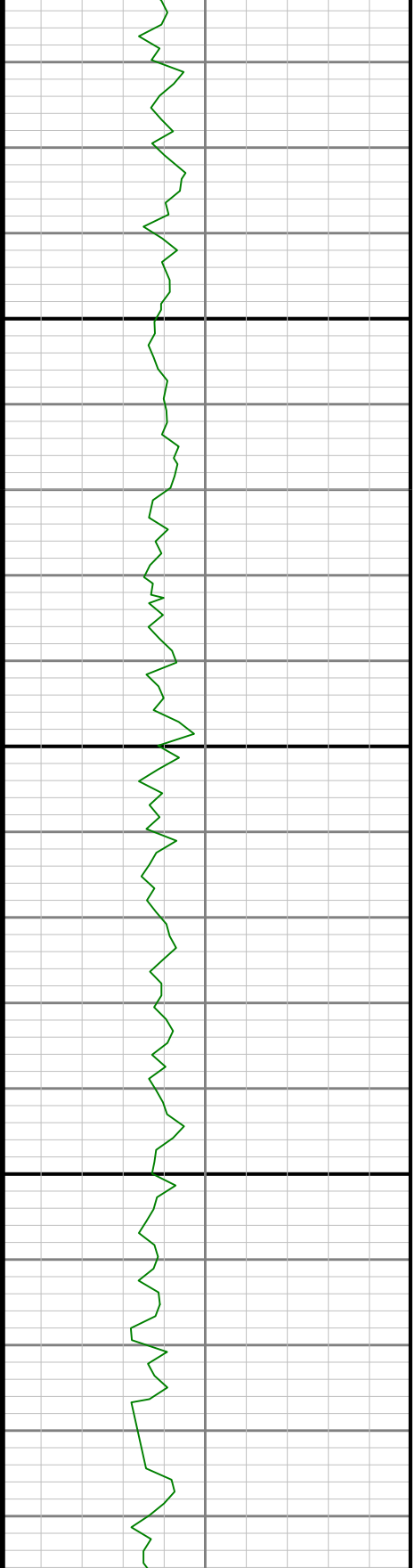
4600

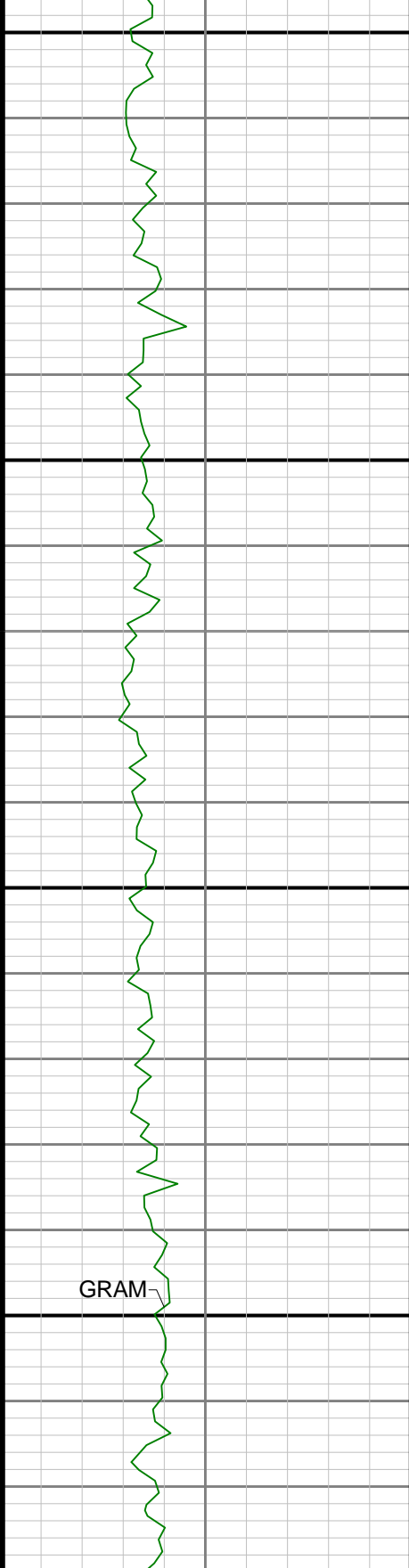




4700

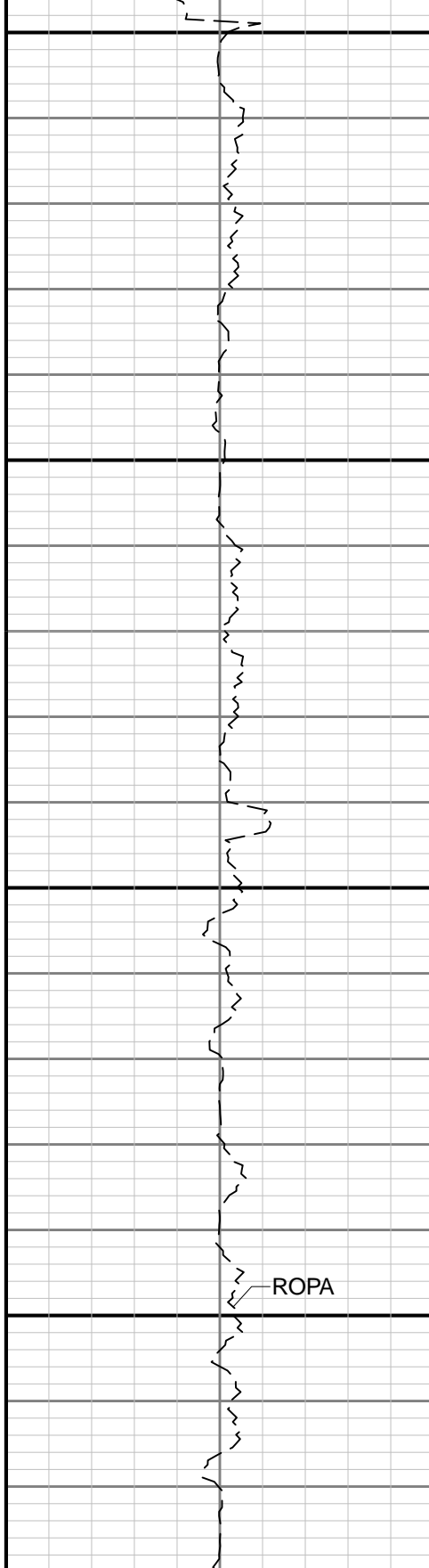
4800





4900

5000

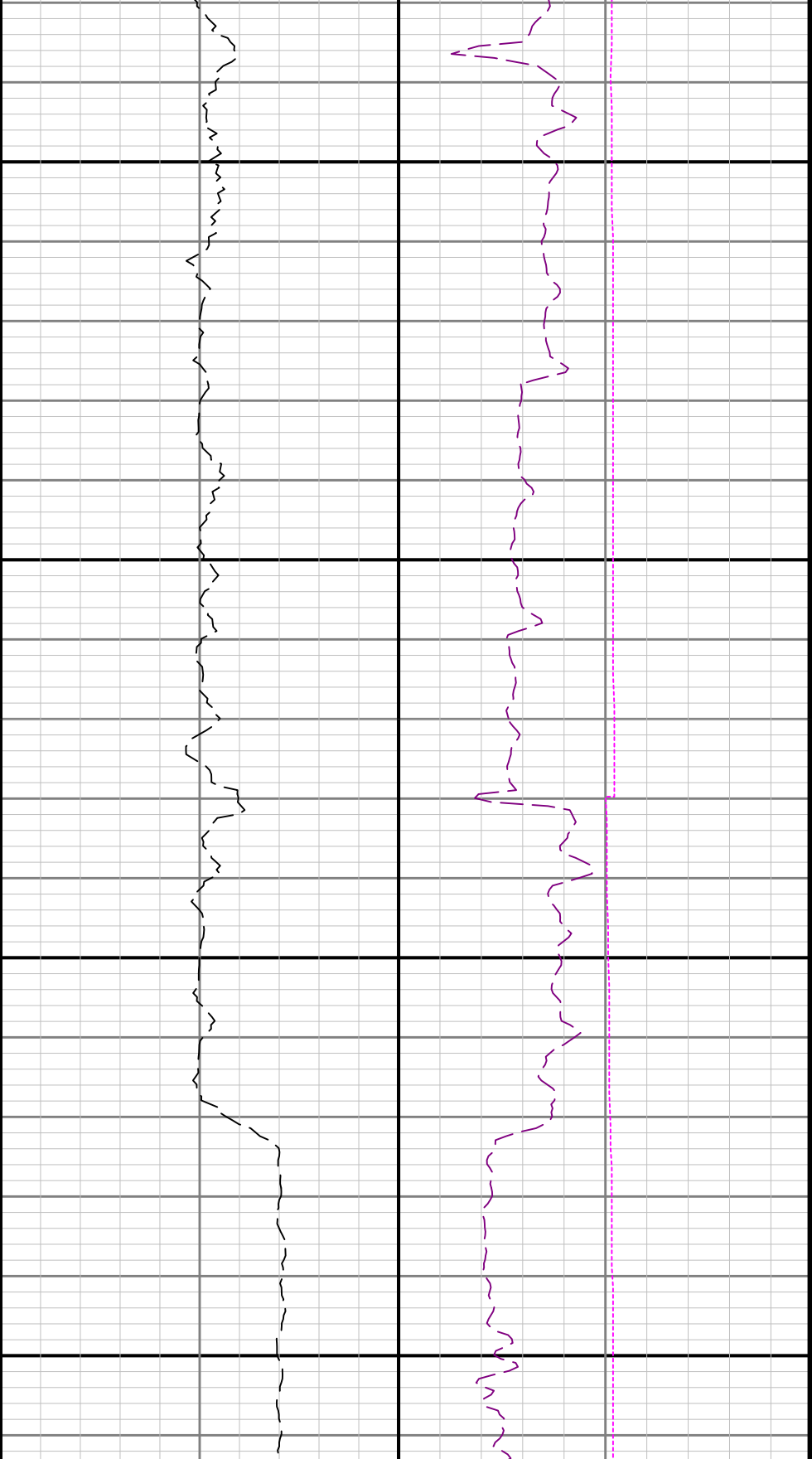


ROPA



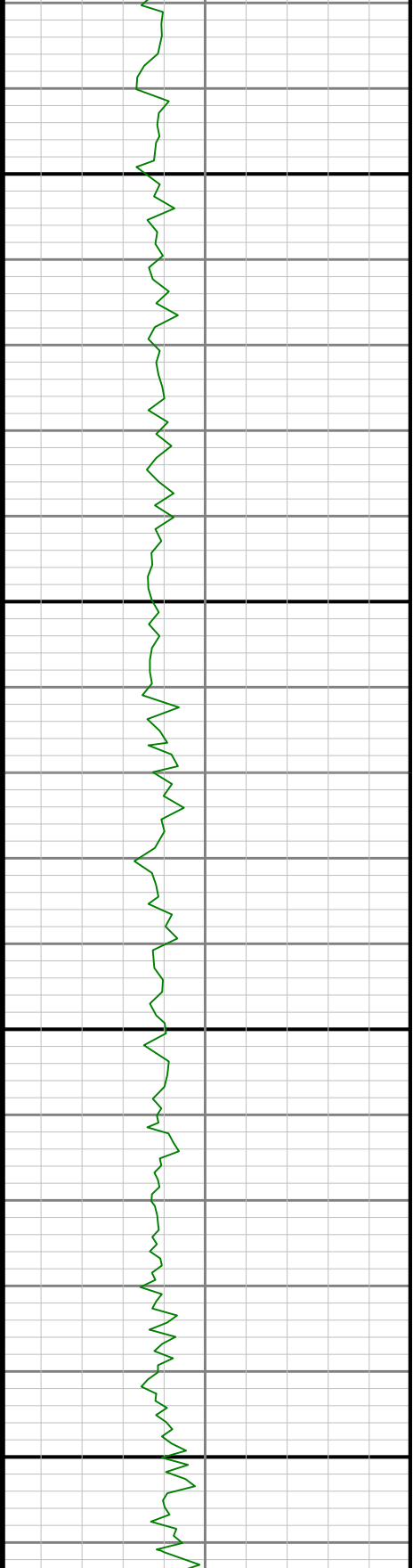
WOBA

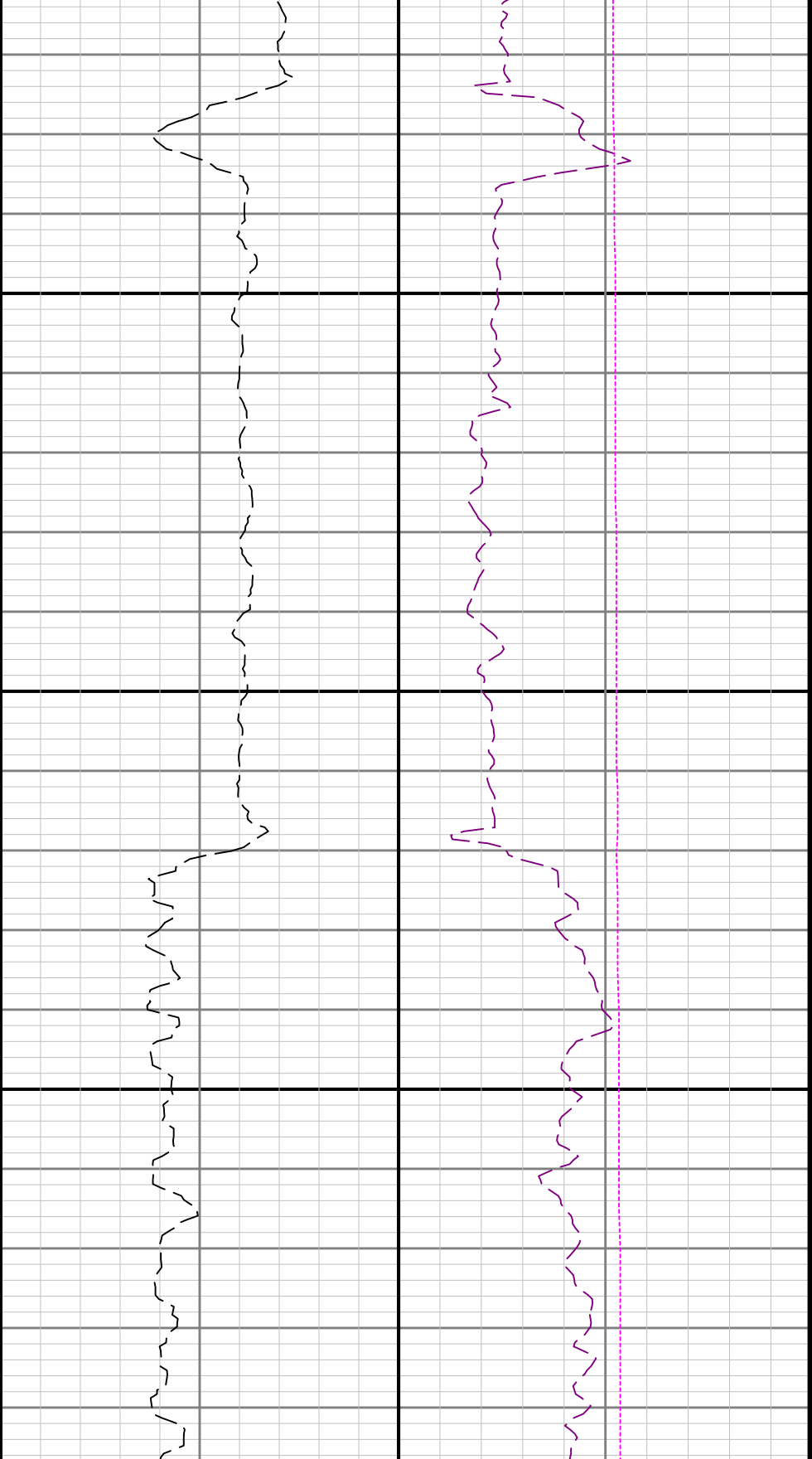
TCDM



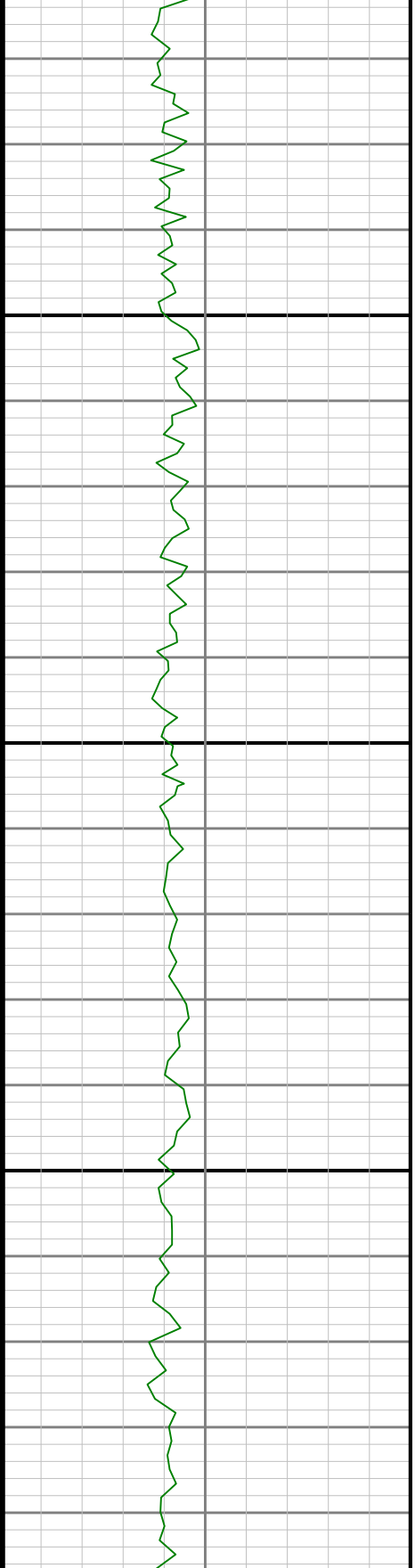
5100

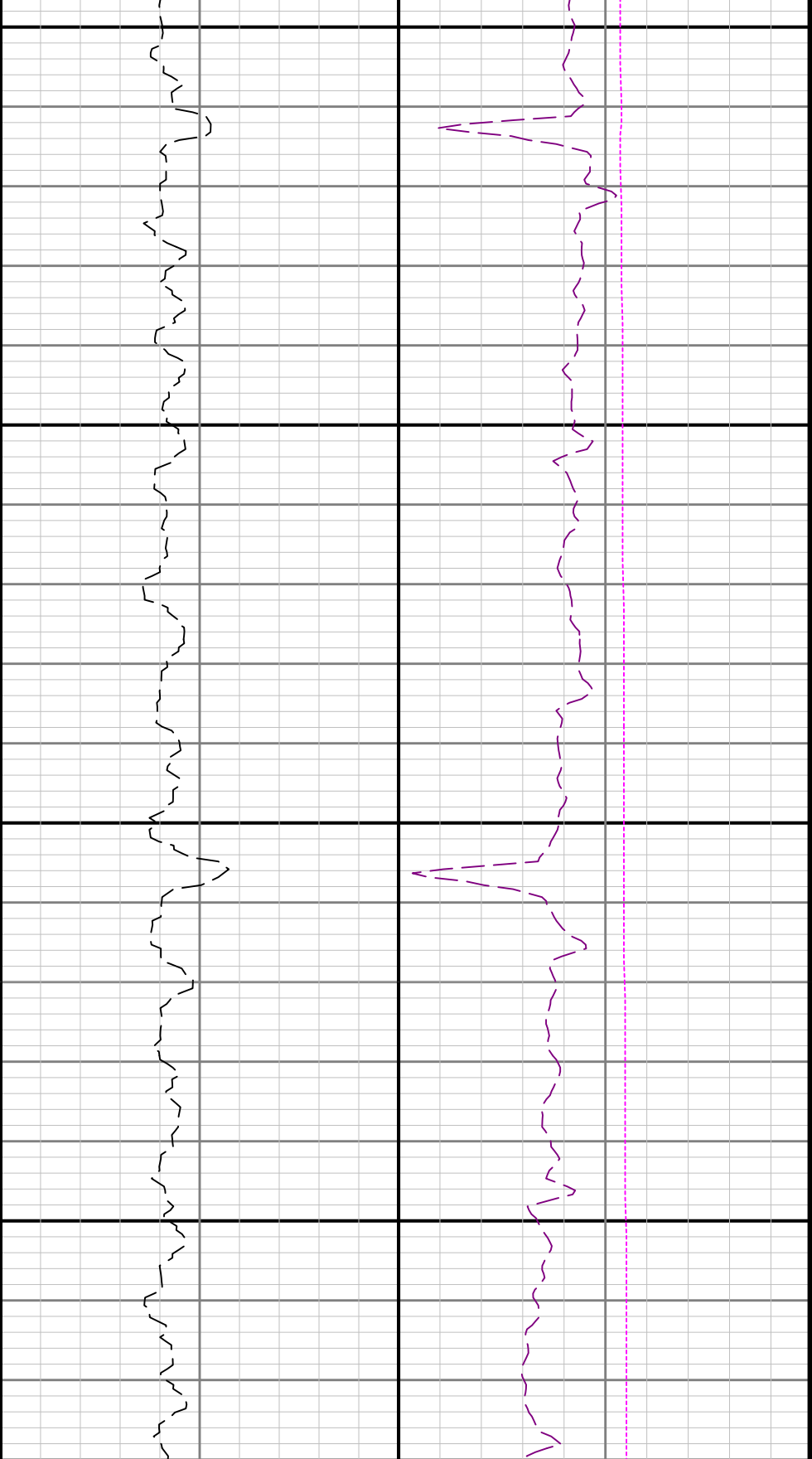
5200





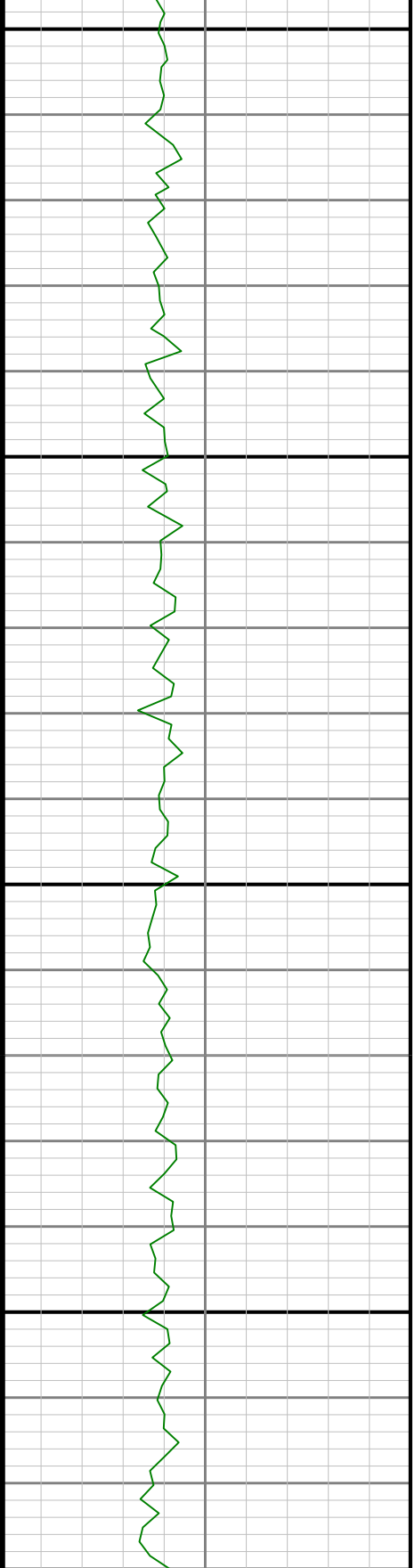
5300

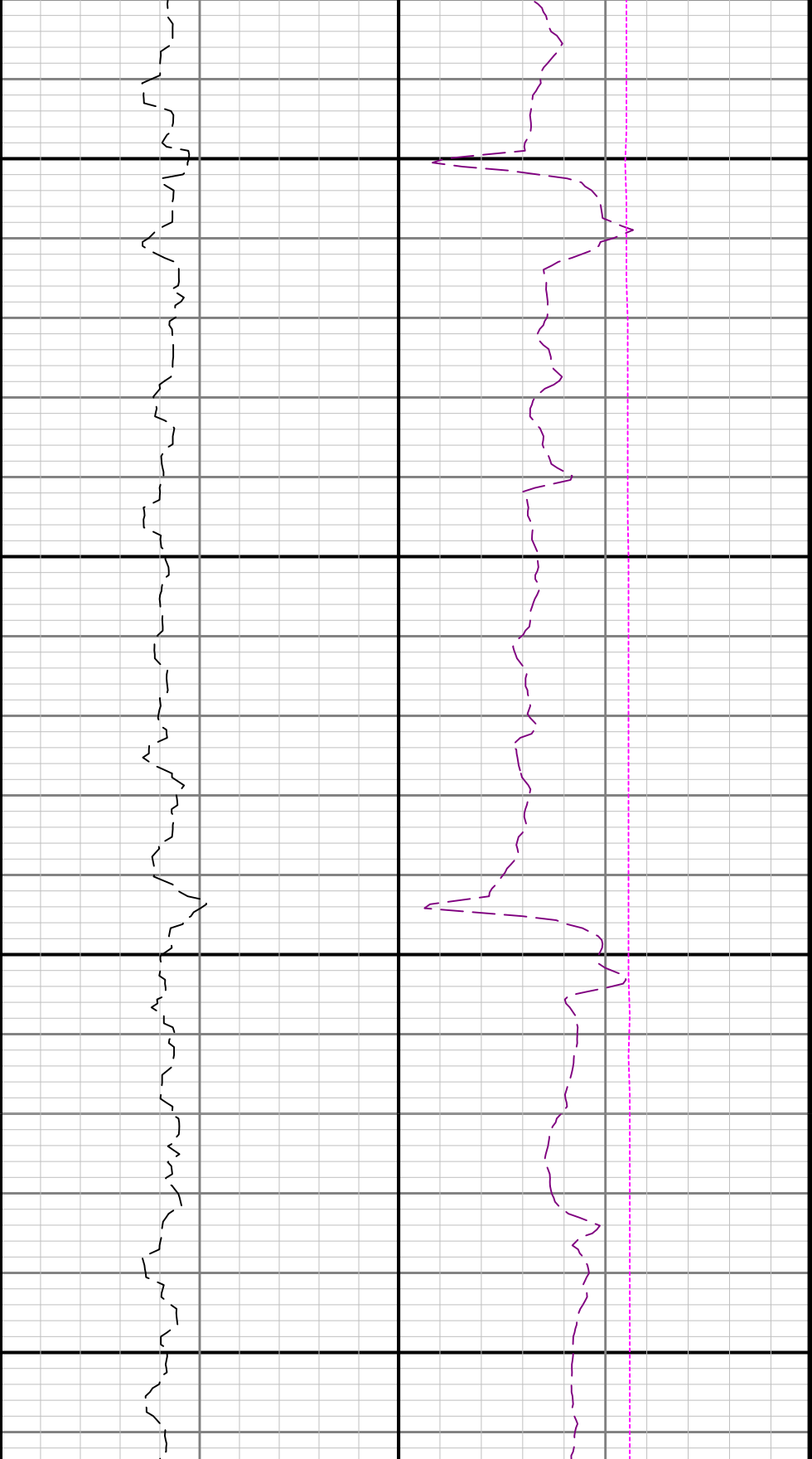




5400

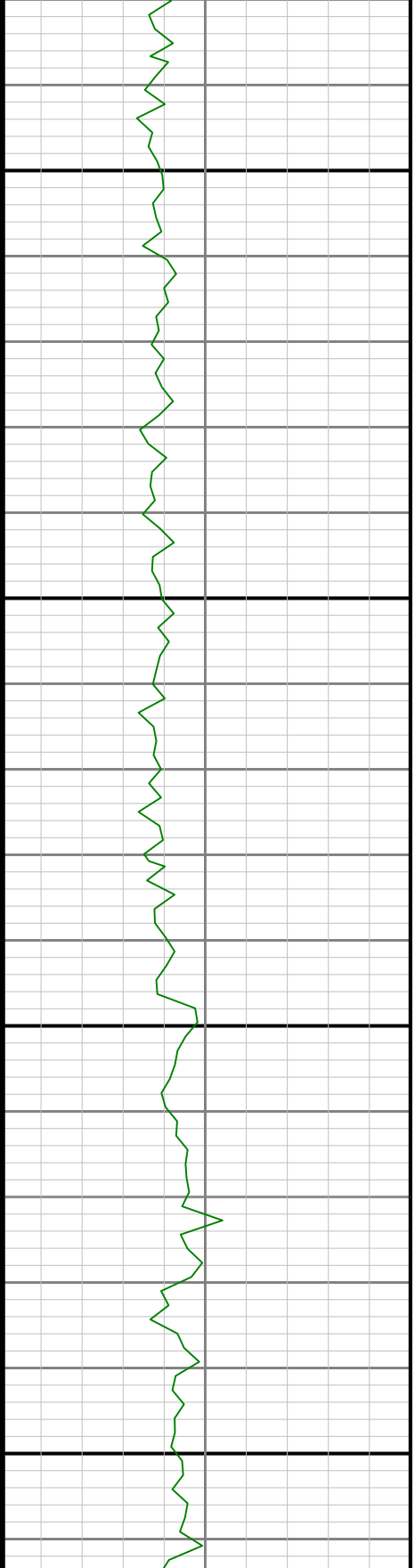
5500

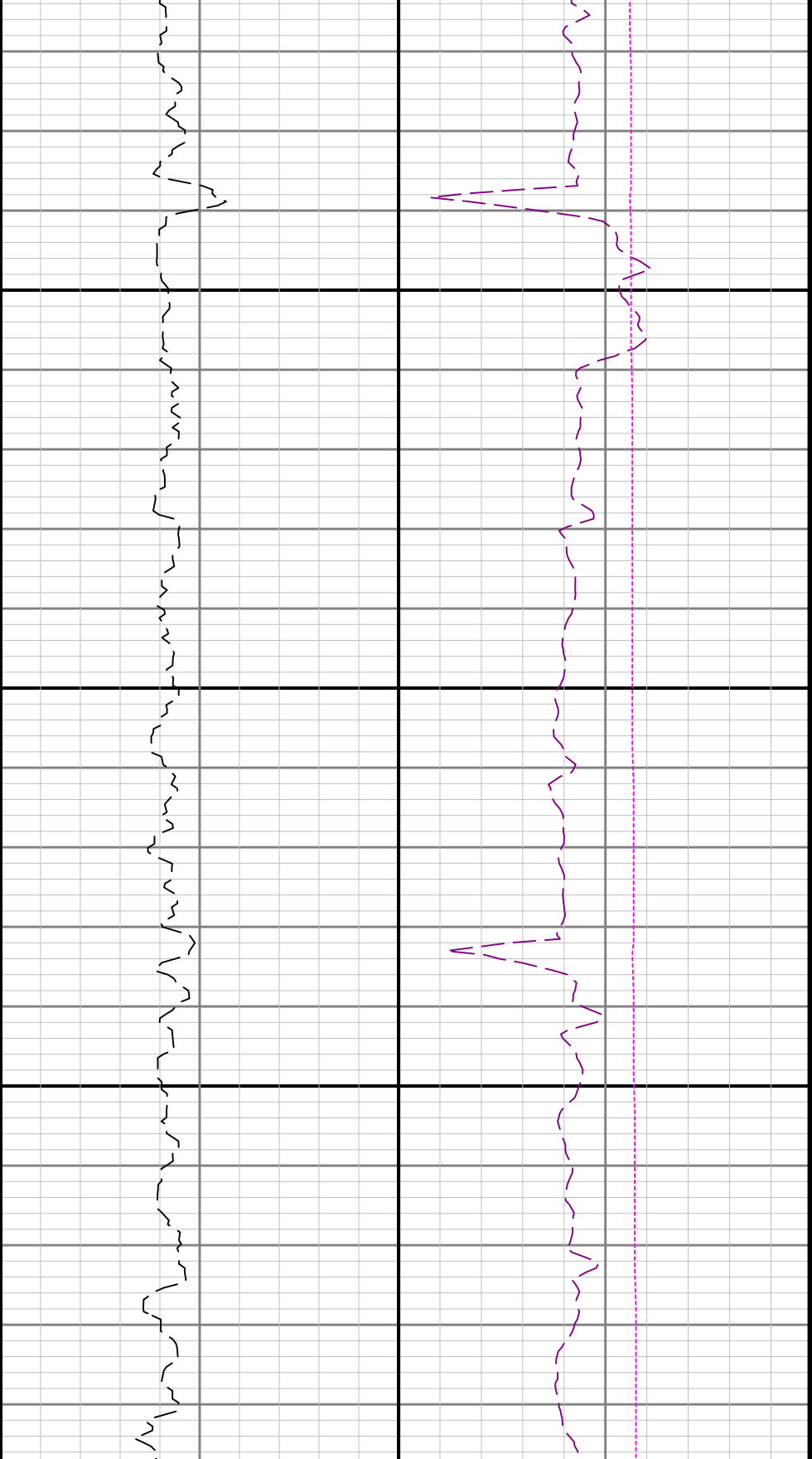




5600

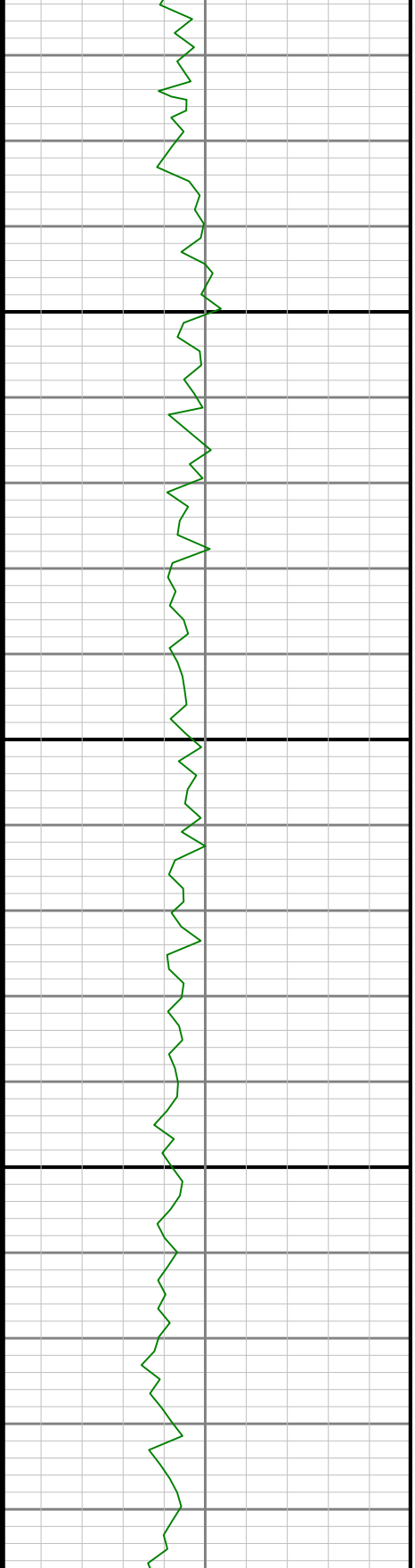
5700

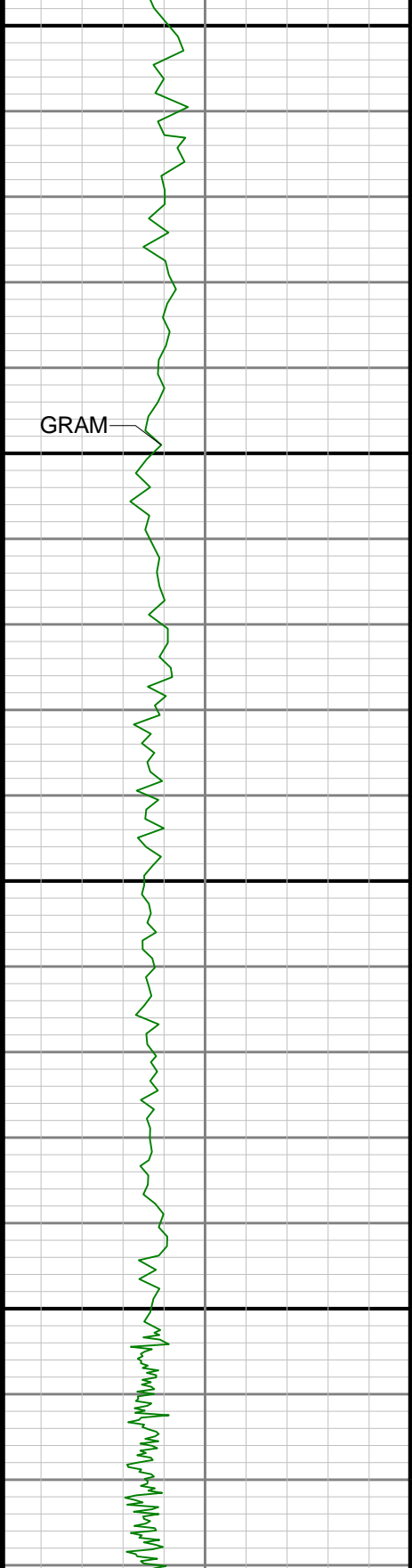




5800

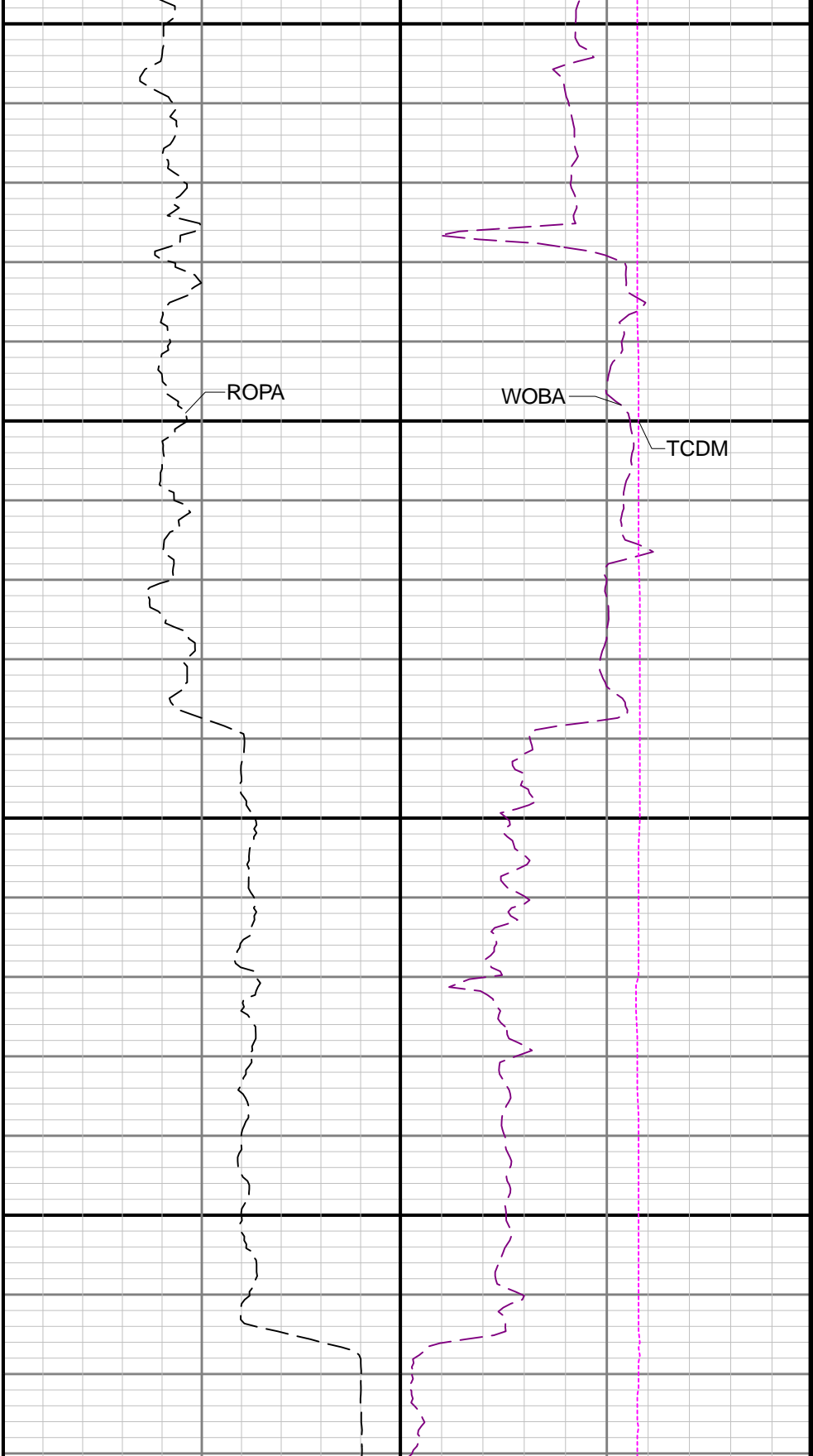
5900

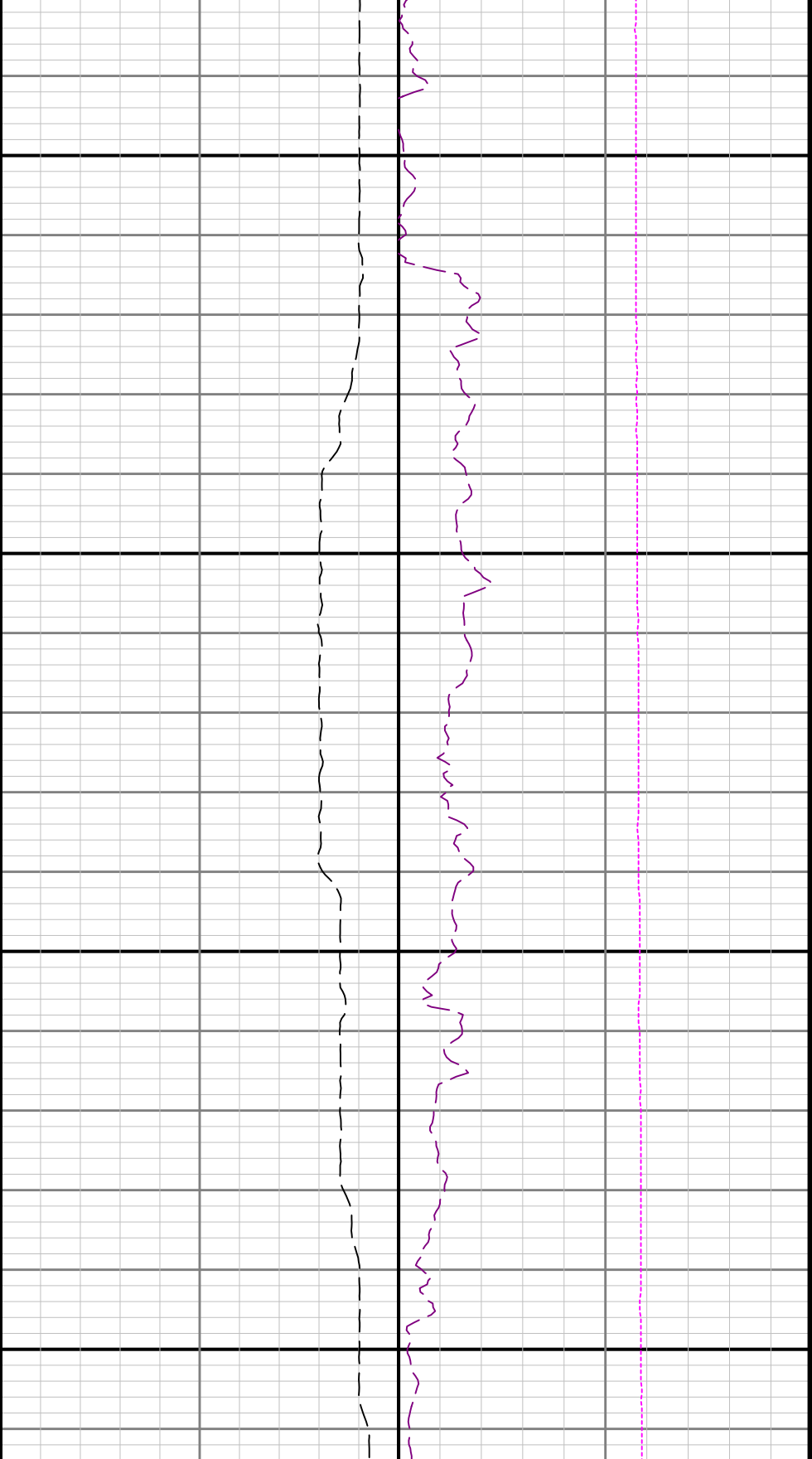




6000

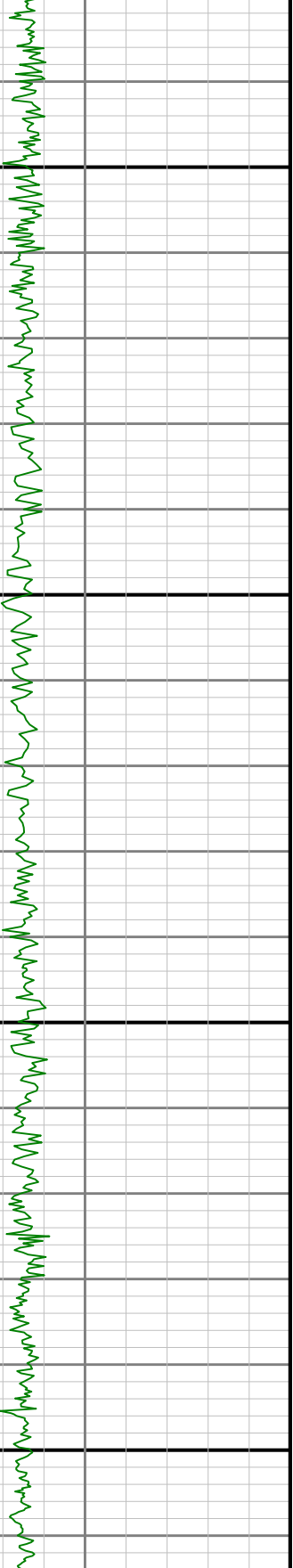
6100

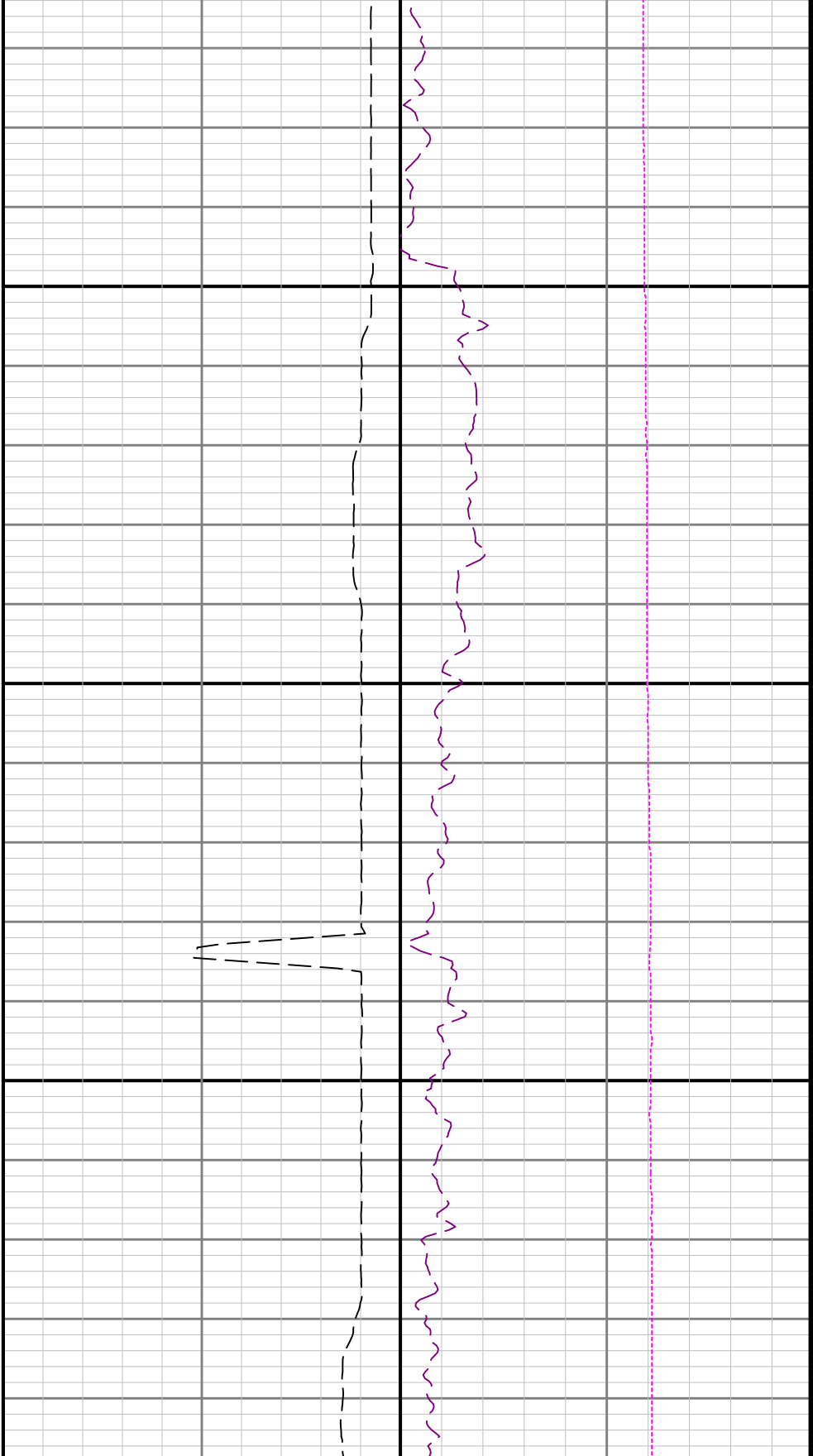




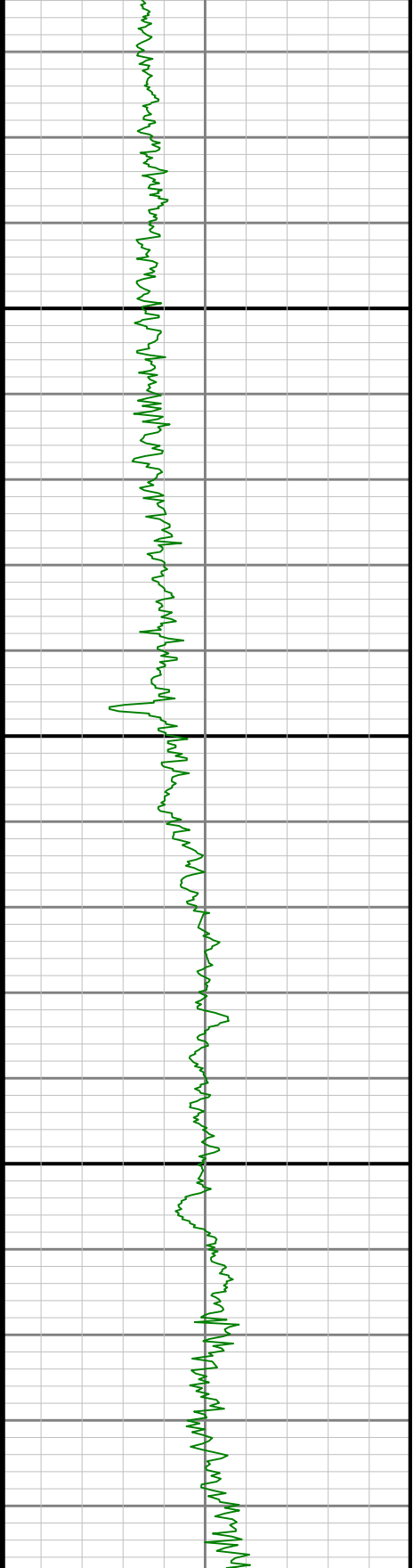
6200

6300



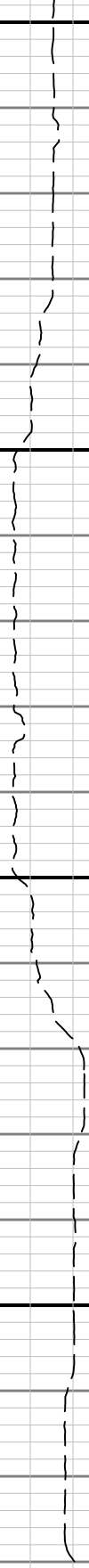
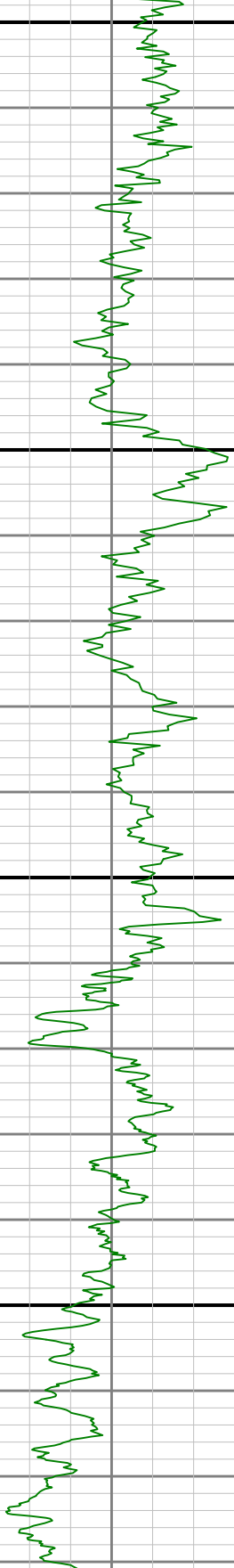


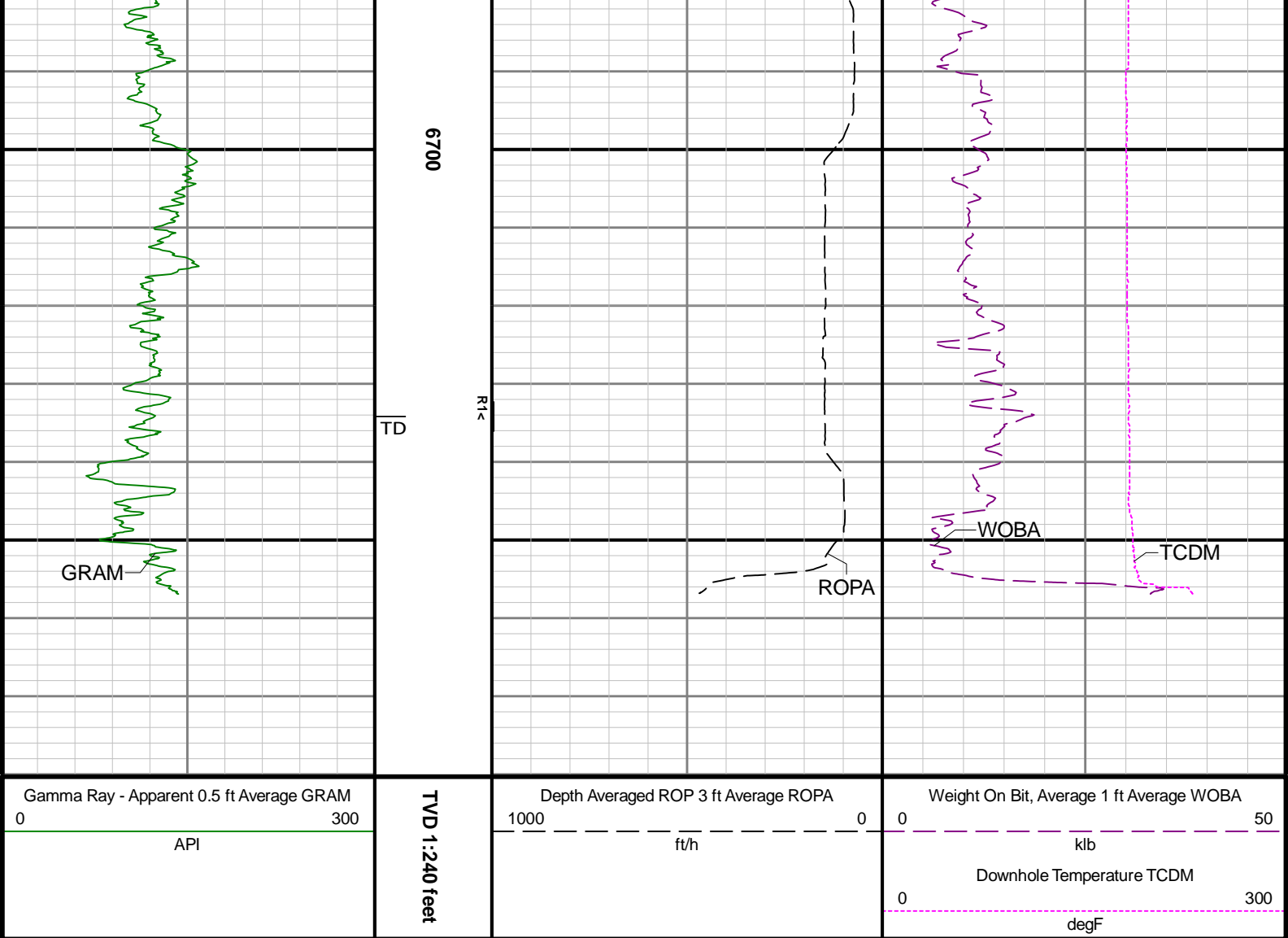
6400



6500

0099





Directional Survey Summary

Latitude: 40° 15' 46.908" N		Longitude: 104° 32' 01.428" W	
North Reference: Grid		Drill Depth Zero: Rig Floor	
Vertical Datum is: Mean Sea Level		Vertical Datum to DDZ: (ft) 4727.00	
Vertical Section North: (ft) 0.00		Vertical Section East: (ft) 0.00	
Vertical Section Azimuth: (deg) 179.42			
Grid Convergence: (deg) -0.62		Magnetic Declination: (deg) 7.87	
Total Correction: (deg) 7.25		TVD Calculation Method: Minimum Curvature	
Magnetic Correction: Off		Local Magnetic Field: (nT) 51770	
Local Magnetic Dip Angle: (deg) 66.57		Local Gravity Field: (m/s2) 9.800	

Tie-In / Projection	Measured Depth (ft)	Inclination (deg)	Azimuth (deg)	Temperature (degF)	North (ft)	East (ft)	True Vertical Depth (ft)	TVD Subsea (ft)	Vertical Section (ft)	Course Length (ft)	Dog Leg Severity (deg/100ft)	Build Rate (deg/100ft)	Turn Rate (deg/100ft)
Tie-In	0.00	0.00	0.00	N/A	0.00	0.00	0.00	-4727.00	0.00	0.00	0.00	0.00	0.00
	87.07	0.48	46.92	N/A	0.25	0.27	87.07	-4639.93	-0.25	87.07	0.55	0.55	53.89
	181.22	0.27	2.96	N/A	0.74	0.57	181.22	-4545.78	-0.73	94.15	0.36	-0.22	-46.69
	272.00	0.28	2.74	N/A	1.18	0.59	272.00	-4455.00	-1.17	90.78	0.01	0.01	-0.24
	366.42	0.27	4.65	N/A	1.63	0.62	366.41	-4360.59	-1.62	94.42	0.01	-0.01	2.02
	461.07	0.34	314.34	N/A	2.05	0.43	461.06	-4265.94	-2.04	94.65	0.28	0.07	-53.15

	555.65	0.34	314.67	N/A	2.44	0.03	555.64	-4171.36	-2.44	94.58	0.00	0.00	0.35
	650.38	0.50	335.33	N/A	3.01	-0.34	650.37	-4076.63	-3.02	94.73	0.23	0.17	21.81
	745.00	0.37	243.01	N/A	3.25	-0.78	744.99	-3982.01	-3.26	94.62	0.67	-0.14	-97.57
	839.47	0.23	197.01	N/A	2.93	-1.11	839.46	-3887.54	-2.94	94.47	0.28	-0.15	-48.69
	934.26	0.32	272.23	N/A	2.76	-1.43	934.25	-3792.75	-2.77	94.79	0.36	0.09	79.35
	1028.77	0.36	278.67	N/A	2.81	-1.99	1028.75	-3698.25	-2.83	94.51	0.06	0.04	6.81
	1123.23	0.50	274.20	N/A	2.89	-2.69	1123.21	-3603.79	-2.91	94.46	0.15	0.15	-4.73
	1217.59	0.56	285.01	N/A	3.04	-3.55	1217.57	-3509.43	-3.07	94.36	0.12	0.06	11.46
	1312.12	0.15	302.10	N/A	3.22	-4.10	1312.10	-3414.90	-3.26	94.53	0.44	-0.43	18.08
	1406.28	0.48	314.49	N/A	3.56	-4.49	1406.25	-3320.75	-3.61	94.16	0.36	0.35	13.16
	1500.74	0.72	312.04	N/A	4.24	-5.21	1500.71	-3226.29	-4.29	94.46	0.26	0.25	-2.59
	1595.28	0.52	326.22	N/A	4.99	-5.89	1595.24	-3131.76	-5.05	94.54	0.27	-0.21	15.00
	1689.84	0.51	325.71	N/A	5.70	-6.36	1689.80	-3037.20	-5.76	94.56	0.01	-0.01	-0.54
	1784.21	0.30	323.60	N/A	6.24	-6.75	1784.17	-2942.83	-6.31	94.37	0.22	-0.22	-2.24
	1878.69	0.32	292.19	N/A	6.54	-7.14	1878.65	-2848.35	-6.61	94.48	0.18	0.02	-33.25
	1931.00	0.43	252.26	N/A	6.54	-7.46	1930.95	-2796.05	-6.61	52.31	0.53	0.21	-76.33
	1987.00	0.09	55.47	98.7	6.50	-7.62	1986.95	-2740.05	-6.58	56.00	0.92	-0.61	291.45
	2082.00	0.03	88.50	101.4	6.54	-7.54	2081.95	-2645.05	-6.62	95.00	0.07	-0.06	34.77
	2271.00	0.28	62.14	106.8	6.76	-7.08	2270.95	-2456.05	-6.83	189.00	0.13	0.13	-13.95
	2366.00	0.22	137.29	109.5	6.73	-6.75	2365.95	-2361.05	-6.80	95.00	0.32	-0.06	79.11
	2460.00	0.13	282.95	112.2	6.62	-6.73	2459.95	-2267.05	-6.69	94.00	0.36	-0.10	154.96
	2555.00	0.25	74.49	114.9	6.70	-6.64	2554.95	-2172.05	-6.77	95.00	0.39	0.13	159.52
	2649.00	0.16	271.70	114.9	6.76	-6.57	2648.95	-2078.05	-6.83	94.00	0.43	-0.10	-173.18
	2744.00	0.22	202.09	117.6	6.60	-6.77	2743.95	-1983.05	-6.67	95.00	0.23	0.06	-73.27
	2838.00	0.31	132.40	117.6	6.26	-6.65	2837.95	-1889.05	-6.33	94.00	0.33	0.10	-74.14
	2933.00	0.22	273.90	120.3	6.10	-6.64	2932.95	-1794.05	-6.17	95.00	0.53	-0.09	148.95
	3027.00	0.22	76.55	120.3	6.15	-6.65	3026.95	-1700.05	-6.22	94.00	0.46	-0.00	173.03
	3121.00	0.34	148.83	125.7	5.96	-6.33	3120.95	-1606.05	-6.02	94.00	0.37	0.13	76.89
	3216.00	0.44	197.22	125.7	5.37	-6.29	3215.95	-1511.05	-5.43	95.00	0.35	0.11	50.94
	3310.00	0.22	293.13	125.7	5.09	-6.56	3309.95	-1417.05	-5.16	94.00	0.54	-0.23	102.03
	3405.00	0.13	25.90	128.4	5.26	-6.69	3404.95	-1322.05	-5.33	95.00	0.27	-0.09	97.65
	3500.00	0.52	120.74	128.4	5.14	-6.27	3499.94	-1227.06	-5.20	95.00	0.58	0.41	99.83
	3594.00	0.39	133.31	131.1	4.70	-5.67	3593.94	-1133.06	-4.76	94.00	0.17	-0.14	13.37
	3689.00	0.30	92.64	131.1	4.47	-5.18	3688.94	-1038.06	-4.52	95.00	0.27	-0.09	-42.81
	3783.00	0.03	73.28	133.8	4.46	-4.92	3782.94	-944.06	-4.51	94.00	0.29	-0.29	-20.60
	3878.00	0.06	123.85	136.5	4.44	-4.85	3877.94	-849.06	-4.49	95.00	0.05	0.03	53.23
	3973.00	0.07	143.41	139.2	4.37	-4.77	3972.94	-754.06	-4.42	95.00	0.03	0.01	20.59
	4067.00	0.03	88.58	139.2	4.32	-4.72	4066.94	-660.06	-4.37	94.00	0.06	-0.04	-58.33
	4161.00	0.04	91.32	139.2	4.32	-4.66	4160.94	-566.06	-4.37	94.00	0.01	0.01	2.91
	4256.00	0.13	352.07	141.9	4.43	-4.64	4255.94	-471.06	-4.47	95.00	0.15	0.09	-104.47
	4350.00	0.04	81.17	141.9	4.54	-4.62	4349.94	-377.06	-4.59	94.00	0.14	-0.10	94.79
	4444.00	0.09	168.79	144.6	4.47	-4.58	4443.94	-283.06	-4.52	94.00	0.10	0.05	93.21
	4539.00	0.09	116.17	144.6	4.37	-4.49	4538.94	-188.06	-4.41	95.00	0.08	0.00	-55.39
	4633.00	0.09	159.25	147.3	4.26	-4.40	4632.94	-94.06	-4.31	94.00	0.07	-0.01	45.83
	4728.00	0.07	135.31	150.0	4.15	-4.33	4727.94	0.94	-4.20	95.00	0.04	-0.02	-25.20
	4823.00	0.06	108.61	150.0	4.10	-4.25	4822.94	95.94	-4.14	95.00	0.03	-0.01	-28.11
	4917.00	0.07	127.87	152.7	4.04	-4.15	4916.94	189.94	-4.09	94.00	0.03	0.01	20.49
	5011.00	0.10	141.75	152.7	3.94	-4.06	5010.94	283.94	-3.99	94.00	0.04	0.03	14.77
	5105.00	0.04	123.01	152.7	3.86	-3.98	5104.94	377.94	-3.90	94.00	0.07	-0.06	-19.94
	5200.00	2.56	167.66	155.4	1.77	-3.50	5199.91	472.91	-1.81	95.00	2.66	2.65	47.00
	5294.00	5.24	121.72	160.8	-2.54	0.60	5293.70	566.70	2.54	94.00	4.17	2.85	-48.87
	5389.00	5.24	116.01	160.8	-6.72	8.19	5388.30	661.30	6.80	95.00	0.55	0.00	-6.01
	5483.00	5.11	114.34	163.5	-10.33	15.86	5481.92	754.92	10.49	94.00	0.21	-0.14	-1.78
	5578.00	4.69	114.49	166.2	-13.68	23.25	5576.57	849.57	13.92	95.00	0.44	-0.44	0.16
	5672.00	4.62	114.58	166.2	-16.85	30.19	5670.26	943.26	17.15	94.00	0.07	-0.07	0.10
	5767.00	4.71	112.36	168.9	-19.93	37.28	5764.95	1037.95	20.30	95.00	0.21	0.09	-2.34
	5861.00	5.01	110.67	171.6	-22.84	44.69	5858.61	1131.61	23.29	94.00	0.35	0.32	-1.80
	5956.00	5.20	112.57	171.6	-25.96	52.55	5953.23	1226.23	26.49	95.00	0.27	0.20	2.00
	6050.00	4.87	113.21	171.6	-29.17	60.15	6046.87	1319.87	29.77	94.00	0.36	-0.35	0.68
	6145.00	5.23	148.43	171.6	-34.45	66.12	6141.52	1414.52	35.11	95.00	3.23	0.38	37.07
	6239.00	11.34	159.80	174.3	-46.78	71.56	6234.50	1507.50	47.50	94.00	6.70	6.50	12.10

		6334.00	18.57	162.73	177.0	-70.02	79.29	6326.23	1599.23	70.82	95.00	7.65	7.61		3.08
		6428.00	26.78	170.52	179.7	-105.27	87.23	6412.91	1685.91	106.15	94.00	9.28	8.73		8.29
		6523.00	35.86	174.43	182.5	-154.18	93.47	6493.99	1766.99	155.12	95.00	9.79	9.56		4.12
		6617.00	44.71	176.45	185.2	-214.71	98.20	6565.62	1838.62	215.69	94.00	9.52	9.41		2.15
		6712.00	52.92	177.73	182.5	-286.05	101.78	6628.13	1901.13	287.07	95.00	8.70	8.64		1.35
		6806.00	61.27	177.75	179.7	-364.84	104.89	6679.15	1952.15	365.89	94.00	8.88	8.88		0.02
		6900.00	70.44	180.01	182.5	-450.50	106.50	6717.56	1990.56	451.56	94.00	10.00	9.76		2.40
		6995.00	78.94	179.35	182.5	-542.05	107.02	6742.62	2015.62	543.10	95.00	8.97	8.95		-0.69
		7089.00	87.81	181.71	187.9	-635.31	106.14	6753.46	2026.46	636.36	94.00	9.76	9.44		2.51
		7184.00	89.72	181.73	190.6	-730.25	103.29	6755.51	2028.51	731.25	95.00	2.01	2.01		0.02
		7278.00	90.28	179.84	198.7	-824.23	102.00	6755.51	2028.51	825.22	94.00	2.10	0.60		-2.01
		7373.00	89.57	180.06	201.4	-919.23	102.09	6755.63	2028.63	920.22	95.00	0.78	-0.75		0.23
		7467.00	89.94	180.03	204.1	-1013.23	102.01	6756.03	2029.03	1014.21	94.00	0.39	0.39		-0.03
		7561.00	90.03	179.72	206.8	-1107.23	102.22	6756.06	2029.06	1108.21	94.00	0.34	0.10		-0.33
		7656.00	90.22	181.27	209.5	-1202.22	101.40	6755.85	2028.85	1203.19	95.00	1.64	0.20		1.63
		7751.00	90.09	181.07	212.2	-1297.20	99.46	6755.59	2028.59	1298.14	95.00	0.25	-0.14		-0.21
		7845.00	89.66	179.37	212.2	-1391.20	99.10	6755.80	2028.80	1392.13	94.00	1.87	-0.46		-1.81
		7940.00	90.52	180.44	214.9	-1486.20	99.25	6755.65	2028.65	1487.12	95.00	1.45	0.91		1.13
		8034.00	90.03	180.29	214.9	-1580.19	98.66	6755.20	2028.20	1581.11	94.00	0.55	-0.52		-0.16
		8129.00	90.28	180.80	214.9	-1675.19	97.75	6754.94	2027.94	1676.09	95.00	0.60	0.26		0.54
		8223.00	89.82	180.65	217.6	-1769.18	96.56	6754.86	2027.86	1770.07	94.00	0.51	-0.49		-0.16
		8318.00	89.78	180.39	220.3	-1864.18	95.70	6755.19	2028.19	1865.05	95.00	0.28	-0.04		-0.27
		8412.00	89.82	179.71	223.0	-1958.17	95.62	6755.52	2028.52	1959.04	94.00	0.72	0.04		-0.72
		8507.00	90.06	179.97	223.0	-2053.17	95.88	6755.62	2028.62	2054.04	95.00	0.37	0.25		0.27
		8601.00	89.60	179.86	225.7	-2147.17	96.02	6755.90	2028.90	2148.03	94.00	0.50	-0.49		-0.12
		8696.00	89.75	180.08	225.7	-2242.17	96.07	6756.44	2029.44	2243.03	95.00	0.28	0.16		0.23
		8790.00	89.78	179.76	228.4	-2336.17	96.20	6756.82	2029.82	2337.02	94.00	0.34	0.03		-0.34
		8885.00	90.22	180.21	228.4	-2431.17	96.23	6756.82	2029.82	2432.02	95.00	0.66	0.46		0.47
		9074.00	90.12	180.32	231.1	-2620.17	95.35	6756.26	2029.26	2621.00	189.00	0.08	-0.05		0.06
		9168.00	89.66	180.23	231.1	-2714.17	94.90	6756.44	2029.44	2714.99	94.00	0.50	-0.49		-0.10
		9358.00	90.25	179.79	233.8	-2904.16	94.87	6756.59	2029.59	2904.98	190.00	0.39	0.31		-0.23
		9452.00	90.09	180.33	236.5	-2998.16	94.77	6756.31	2029.31	2998.97	94.00	0.60	-0.17		0.57
		9546.00	90.25	180.24	236.5	-3092.16	94.30	6756.03	2029.03	3092.96	94.00	0.20	0.17		-0.10
		9640.00	90.68	180.57	236.5	-3186.16	93.64	6755.27	2028.27	3186.94	94.00	0.58	0.46		0.35
		9735.00	90.03	180.46	239.2	-3281.15	92.79	6754.68	2027.68	3281.92	95.00	0.69	-0.68		-0.12
		9830.00	90.74	180.13	239.2	-3376.15	92.30	6754.04	2027.04	3376.91	95.00	0.82	0.75		-0.35
		9924.00	90.40	180.81	239.2	-3470.14	91.53	6753.11	2026.11	3470.89	94.00	0.81	-0.36		0.72
		10018.00	90.22	180.33	239.2	-3564.13	90.59	6752.60	2025.60	3564.86	94.00	0.55	-0.19		-0.51
		10113.00	89.72	180.02	239.2	-3659.13	90.30	6752.65	2025.65	3659.86	95.00	0.62	-0.53		-0.33
		10207.00	90.15	180.06	241.9	-3753.13	90.24	6752.76	2025.76	3753.85	94.00	0.46	0.46		0.04
		10301.00	89.97	179.73	244.6	-3847.13	90.41	6752.66	2025.66	3847.85	94.00	0.40	-0.19		-0.35
		10396.00	89.75	180.36	244.6	-3942.13	90.33	6752.89	2025.89	3942.84	95.00	0.70	-0.23		0.66
		10490.00	89.69	180.07	244.6	-4036.13	89.98	6753.35	2026.35	4036.83	94.00	0.32	-0.06		-0.31
		10585.00	90.00	180.22	247.3	-4131.13	89.74	6753.61	2026.61	4131.82	95.00	0.36	0.33		0.16
		10679.00	89.63	180.19	247.3	-4225.12	89.40	6753.91	2026.91	4225.81	94.00	0.39	-0.39		-0.03
		10774.00	90.12	180.98	250.0	-4320.12	88.43	6754.12	2027.12	4320.79	95.00	0.98	0.52		0.83
		10869.00	89.85	180.73	250.0	-4415.11	87.02	6754.14	2027.14	4415.76	95.00	0.39	-0.28		-0.26
		10963.00	89.97	180.51	250.0	-4509.10	86.00	6754.29	2027.29	4509.74	94.00	0.27	0.13		-0.23
		11058.00	90.58	180.54	250.0	-4604.10	85.13	6753.83	2026.83	4604.72	95.00	0.64	0.64		0.03
		11152.00	90.06	181.14	250.0	-4698.08	83.75	6753.31	2026.31	4698.69	94.00	0.84	-0.55		0.64
		11247.00	90.28	179.85	250.0	-4793.08	82.93	6753.03	2026.03	4793.67	95.00	1.38	0.23		-1.36
		11341.00	89.88	180.24	250.0	-4887.08	82.86	6752.90	2025.90	4887.67	94.00	0.59	-0.43		0.41
		11436.00	89.51	178.91	252.7	-4982.07	83.56	6753.40	2026.40	4982.66	95.00	1.45	-0.39		-1.40
		11531.00	89.17	178.99	252.7	-5077.05	85.30	6754.50	2027.50	5077.65	95.00	0.37	-0.36		0.08
		11625.00	90.55	179.18	252.7	-5171.03	86.80	6754.72	2027.72	5171.65	94.00	1.48	1.47		0.20
		11720.00	90.49	179.61	252.7	-5266.02	87.81	6753.86	2026.86	5266.64	95.00	0.46	-0.06		0.45
		11814.00	90.49	179.38	252.7	-5360.02	88.63	6753.06	2026.06	5360.64	94.00	0.24	0.00		-0.24
		11909.00	90.40	179.71	252.7	-5455.01	89.39	6752.32	2025.32	5455.64	95.00	0.36	-0.09		0.35
		12003.00	90.55	179.33	258.1	-5549.00	90.18	6751.54	2024.54	5549.63	94.00	0.43	0.16		-0.40
		12098.00	90.55	179.56	258.1	-5644.00	91.10	6750.63	2023.63	5644.63	95.00	0.24	-0.00		0.24
		12192.00	90.22	178.96	258.1	-5737.99	92.31	6750.00	2023.00	5738.63	94.00	0.73	-0.35		-0.64
		12287.00	90.34	179.59	259.8	-5832.98	94.43	6749.53	2023.53	5833.63	95.00	0.59	0.43		0.49

	12287.00	90.34	178.50	260.8	-3632.96	94.42	6749.33	2022.33	3633.62	93.00	0.30	0.13	-0.46
	12381.00	91.14	179.03	258.1	-5926.93	96.44	6748.32	2021.32	5927.60	94.00	1.02	0.85	0.56
	12476.00	90.03	178.46	258.1	-6021.90	98.52	6747.35	2020.35	6022.59	95.00	1.31	-1.17	-0.60
	12571.00	90.15	179.47	260.8	-6116.88	100.24	6747.20	2020.20	6117.58	95.00	1.07	0.13	1.06
	12665.00	90.18	179.53	260.8	-6210.88	101.06	6746.93	2019.93	6211.58	94.00	0.07	0.03	0.06
	12760.00	89.57	179.29	260.8	-6305.87	102.04	6747.14	2020.14	6306.58	95.00	0.69	-0.64	-0.25
	12855.00	90.06	180.00	260.8	-6400.87	102.62	6747.44	2020.44	6401.58	95.00	0.91	0.52	0.75
	12949.00	90.80	178.09	260.8	-6494.85	104.19	6746.74	2019.74	6495.57	94.00	2.18	0.79	-2.03
	13044.00	90.80	178.62	258.1	-6589.80	106.92	6745.41	2018.41	6590.55	95.00	0.56	-0.00	0.56
	13139.00	89.85	179.48	260.8	-6684.78	108.49	6744.87	2017.87	6685.54	95.00	1.35	-1.00	0.91
	13233.00	89.01	178.79	260.8	-6778.77	109.91	6745.81	2018.81	6779.53	94.00	1.16	-0.89	-0.73
	13328.00	88.83	179.19	263.5	-6873.74	111.59	6747.60	2020.60	6874.51	95.00	0.46	-0.19	0.42
	13422.00	89.54	178.94	263.5	-6967.71	113.12	6748.94	2021.94	6968.50	94.00	0.80	0.76	-0.27
	13517.00	89.63	178.86	263.5	-7062.69	114.94	6749.62	2022.62	7063.49	95.00	0.13	0.09	-0.08
	13611.00	90.86	180.77	263.5	-7156.69	115.25	6749.22	2022.22	7157.49	94.00	2.42	1.31	2.03
	13706.00	90.66	180.85	263.5	-7251.67	113.90	6747.96	2020.96	7252.45	95.00	0.23	-0.21	0.08
	13801.00	90.47	181.07	263.5	-7346.65	112.31	6747.03	2020.03	7347.41	95.00	0.31	-0.20	0.23
	13895.00	90.57	180.66	266.2	-7440.63	110.89	6746.17	2019.17	7441.38	94.00	0.45	0.11	-0.44
	13990.00	90.87	180.68	269.0	-7535.62	109.78	6744.98	2017.98	7536.35	95.00	0.32	0.32	0.02
	14084.00	90.38	180.84	269.0	-7629.61	108.54	6743.95	2016.95	7630.31	94.00	0.55	-0.52	0.17
	14179.00	90.81	179.66	269.0	-7724.60	108.12	6742.97	2015.97	7725.30	95.00	1.32	0.45	-1.24
	14273.00	90.53	180.80	269.0	-7818.59	107.74	6741.87	2014.87	7819.28	94.00	1.25	-0.30	1.21
	14368.00	90.01	180.86	269.0	-7913.58	106.37	6741.42	2014.42	7914.25	95.00	0.55	-0.55	0.06
	14463.00	90.50	180.72	269.0	-8008.57	105.06	6741.00	2014.00	8009.22	95.00	0.54	0.52	-0.15
	14557.00	89.77	179.38	269.0	-8102.56	104.98	6740.78	2013.78	8103.21	94.00	1.62	-0.78	-1.43
	14652.00	89.80	179.49	269.0	-8197.56	105.91	6741.13	2014.13	8198.21	95.00	0.12	0.03	0.12
	14746.00	89.95	178.98	269.0	-8291.55	107.17	6741.34	2014.34	8292.21	94.00	0.57	0.16	-0.54
	14841.00	90.10	180.77	269.0	-8386.55	107.38	6741.30	2014.30	8387.20	95.00	1.89	0.16	1.88
	14936.00	90.01	179.58	269.0	-8481.54	107.09	6741.20	2014.20	8482.19	95.00	1.26	-0.09	-1.25
	15030.00	89.80	178.73	266.2	-8575.53	108.47	6741.36	2014.36	8576.19	94.00	0.93	-0.22	-0.90
	15125.00	89.67	178.66	269.0	-8670.51	110.64	6741.80	2014.80	8671.18	95.00	0.16	-0.14	-0.07
	15219.00	90.17	179.33	269.0	-8764.49	112.28	6741.93	2014.93	8765.18	94.00	0.89	0.53	0.71
	15314.00	91.21	181.05	269.0	-8859.48	111.97	6740.79	2013.79	8860.16	95.00	2.12	1.09	1.81
	15409.00	90.07	180.22	269.0	-8954.47	110.92	6739.73	2012.73	8955.13	95.00	1.48	-1.20	-0.87
	15503.00	91.27	179.43	271.7	-9048.46	111.20	6738.63	2011.63	9049.12	94.00	1.53	1.28	-0.84
	15598.00	90.23	179.53	271.7	-9143.44	112.07	6737.38	2010.38	9144.11	95.00	1.10	-1.09	0.11
	15692.00	89.95	178.21	271.7	-9237.42	113.92	6737.23	2010.23	9238.10	94.00	1.44	-0.30	-1.40
	15787.00	90.23	178.52	271.7	-9332.38	116.63	6737.09	2010.09	9333.09	95.00	0.44	0.29	0.33
	15881.00	89.95	178.68	274.4	-9426.35	118.93	6736.94	2009.94	9427.08	94.00	0.34	-0.30	0.17
	15976.00	90.13	178.70	271.7	-9521.33	121.10	6736.87	2009.87	9522.07	95.00	0.19	0.19	0.02
	16164.00	90.41	180.86	274.4	-9709.32	121.82	6735.99	2008.99	9710.05	188.00	1.16	0.15	1.15
	16259.00	90.32	181.46	274.4	-9804.29	119.90	6735.38	2008.38	9805.00	95.00	0.64	-0.09	0.63
	16353.00	90.26	180.77	274.4	-9898.27	118.07	6734.90	2007.90	9898.96	94.00	0.74	-0.06	-0.73
	16448.00	90.20	181.35	274.4	-9993.26	116.31	6734.52	2007.52	9993.92	95.00	0.61	-0.06	0.61
	16542.00	90.07	181.09	274.4	-10087.23	114.31	6734.30	2007.30	10087.87	94.00	0.31	-0.14	-0.28
	16636.00	90.07	181.26	277.1	-10181.21	112.38	6734.19	2007.19	10181.83	94.00	0.18	0.00	0.18
	16731.00	90.10	180.93	277.1	-10276.20	110.57	6734.05	2007.05	10276.79	95.00	0.35	0.03	-0.35
	16825.00	90.01	180.81	277.1	-10370.19	109.14	6733.96	2006.96	10370.76	94.00	0.16	-0.10	-0.13
	17014.00	90.04	180.91	255.4	-10559.16	106.30	6733.87	2006.87	10559.70	189.00	0.06	0.02	0.05
	17109.00	89.67	180.52	277.1	-10654.16	105.12	6734.11	2007.11	10654.67	95.00	0.57	-0.39	-0.41
	17291.00	90.04	181.01	366.3	-10836.14	102.69	6734.57	2007.57	10836.62	182.00	0.34	0.20	0.27
Projection	17315.00	90.04	181.01	N/A	-10860.14	102.26	6734.56	2007.56	10860.61	24.00	0.00	-0.00	-0.00