

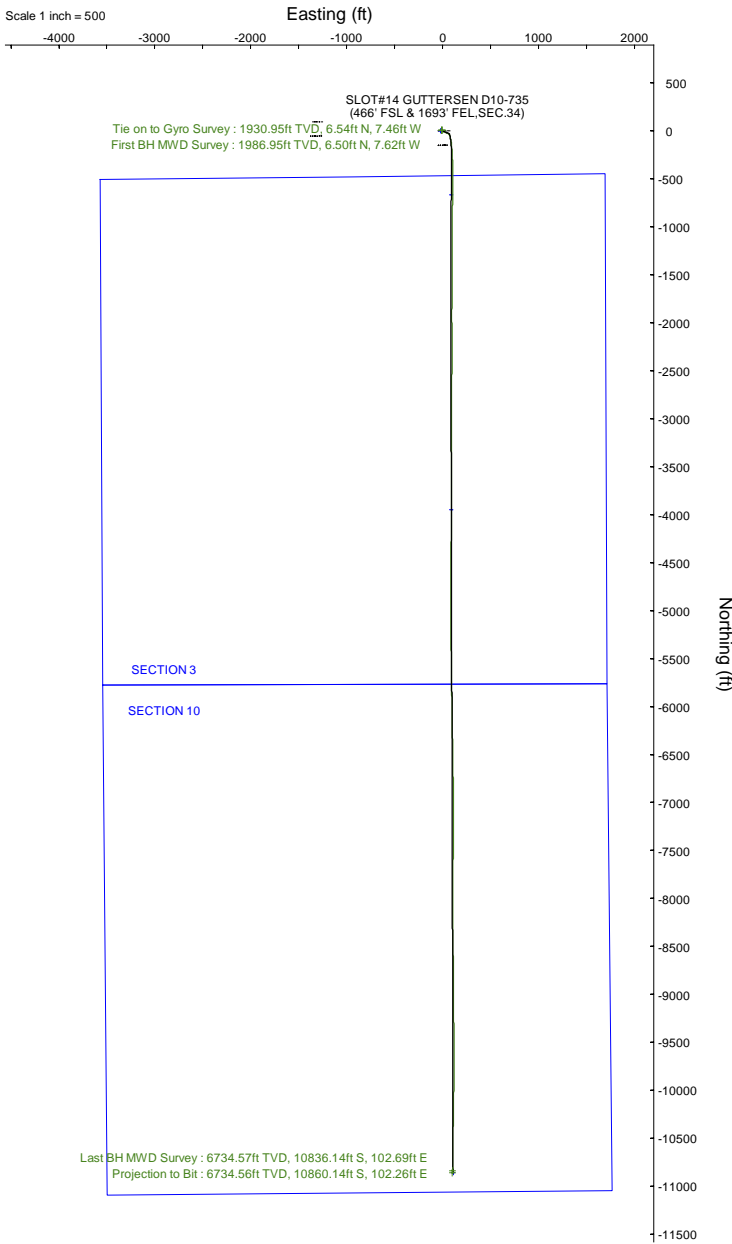
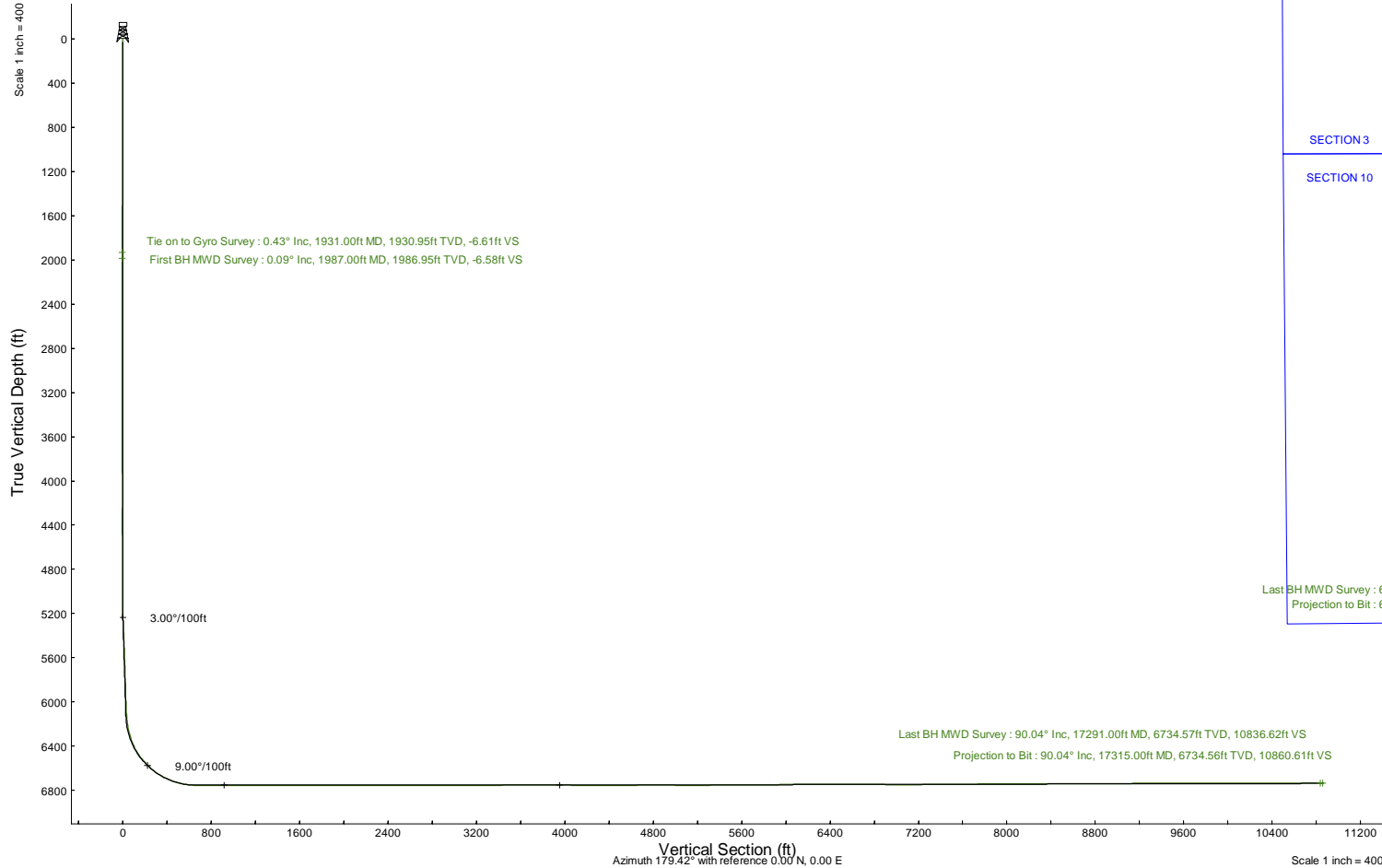
NOBLE ENERGY, INC



Location:	COLORADO	Slot:	SLOT#14 GUTTERSEN D10-735 (466' FSL & 1693' FEL,SEC.34)
Field:	WELD COUNTY (NOBLE NAD 83 GRID)	Well:	GUTTERSEN D10-735
Facility:	SEC.34-T04N-R64W	Wellbore:	GUTTERSEN D10-735 PWB

Plot reference wellpath is GUTTERSEN D10-735 (REV-B.0) PWP	Grid System: NAD83 / Lambert Colorado SP, Northern Zone (501), US feet
True vertical depths are referenced to H&P 517 (30KB) (RKB)	North Reference: Grid north
Reference wellpath measured depths are referenced to H&P 517 (30KB) (RKB)	Scale: True distance
H&P 517 (30KB) (RKB) to Mean Sea Level: 4727 feet	Coordinates are in feet referenced to Slot
Mean Sea Level to Ground level (At Slot: SLOT#14 GUTTERSEN D10-735 (466' FSL & 1693' FEL,SEC.34)): 0 feet	Depths are in feet
Offset wellpath MDs are referenced to each path's default MD datum	Created by: guenaler on 2022-04-06; Database: WA_Denver

Location Information						
Facility Name			Grid East (US ft)	Grid North (US ft)	Latitude	Longitude
SEC.34-T04N-R64W			3268299.973	1340227.112	40°15'47.9880"N	104°32'18.8880"W
Slot	Local N (ft)	Local E (ft)	Grid East (US ft)	Grid North (US ft)	Latitude	Longitude
SLOT#14 GUTTERSEN D10-735 (466' FSL & 1693' FEL,SEC.34)	-94.57	1354.67	3269654.582	1340132.544	40°15'46.9080"N	104°32'1.4280"W
H&P 517 (30KB) (RKB) to Ground level (At Slot: SLOT#14 GUTTERSEN D10-735 (466' FSL & 1693' FEL,SEC.34))					4727ft	
Mean Sea Level to Ground level (At Slot: SLOT#14 GUTTERSEN D10-735 (466' FSL & 1693' FEL,SEC.34))					0ft	
H&P 517 (30KB) (RKB) to Mean Sea Level					4727ft	





Actual Wellpath Report

GUTTERSEN D10-735 AWP

Page 1 of 7



REFERENCE WELLPATH IDENTIFICATION			
Operator	NOBLE ENERGY, INC	Well	GUTTERSEN D10-735
Field	WELD COUNTY (NOBLE NAD 83 GRID)	API/Legal	
Facility	SEC.34-T04N-R64W	Wellbore	GUTTERSEN D10-735 AWB
Slot	SLOT#14 GUTTERSEN D10-735 (466' FSL & 1693' FEL,SEC.34)		

REPORT SETUP INFORMATION			
Projection System	NAD83 / Lambert Colorado SP, Northern Zone (501), US feet	Software System	WellArchitect® 6.0
North Reference	Grid	User	Guenaler
Scale	0.999957	Report Generated	4/6/2022 at 10:25:23 AM
Convergence at slot	0.62° East	Database	WA_Denver

WELLPATH LOCATION						
	Local coordinates		Grid coordinates		Geographic coordinates	
	North[ft]	East[ft]	Easting[US ft]	Northing[US ft]	Latitude	Longitude
Slot Location	-94.57	1354.67	3269654.58	1340132.54	40°15'46.9080"N	104°32'1.4280"W
Facility Reference Pt			3268299.97	1340227.11	40°15'47.9880"N	104°32'18.8880"W
Field Reference Pt			3000000.00	4454105.15	48°46'34.3150"N	105°30'0.0000"W

WELLPATH DATUM			
Calculation method	Minimum curvature	H&P 517 (30'KB) (RKB) to Facility Vertical Datum	4727.00ft
Horizontal Reference Pt	Slot	H&P 517 (30'KB) (RKB) to Mean Sea Level	4727.00ft
Vertical Reference Pt	H&P 517 (30'KB) (RKB)	H&P 517 (30'KB) (RKB) to Ground Level at Slot (SLOT#14 GUTTERSEN D10-735 (466' FSL & 1693' FEL,SEC.34))	4727.00ft
MD Reference Pt	H&P 517 (30'KB) (RKB)	Section Origin	N 0.00, E 0.00 ft
Field Vertical Reference	Mean Sea Level	Section Azimuth	179.42°



Actual Wellpath Report
GUTTERSEN D10-735 AWP
Page 2 of 7



REFERENCE WELLPATH IDENTIFICATION			
Operator	NOBLE ENERGY, INC	Well	GUTTERSEN D10-735
Field	WELD COUNTY (NOBLE NAD 83 GRID)	API/Legal	
Facility	SEC.34-T04N-R64W	Wellbore	GUTTERSEN D10-735 AWB
Slot	SLOT#14 GUTTERSEN D10-735 (466' FSL & 1693' FEL,SEC.34)		

WELLPATH DATA (180 stations)										
MD [ft]	Inclination [°]	Azimuth [°]	TVD [ft]	Vert Sect [ft]	North [ft]	East [ft]	Latitude	Longitude	DLS [°/100ft]	Comments
0.00	0.000	46.920	0.00	0.00	0.00	0.00	40°15'46.9080"N	104°32'1.4280"W	0.00	
87.07	0.480	46.920	87.07	-0.25	0.25	0.27	40°15'46.9104"N	104°32'1.4245"W	0.55	
181.22	0.270	2.960	181.22	-0.73	0.74	0.57	40°15'46.9153"N	104°32'1.4206"W	0.36	
272.00	0.280	2.740	272.00	-1.17	1.18	0.59	40°15'46.9195"N	104°32'1.4203"W	0.01	
366.42	0.270	4.650	366.41	-1.62	1.63	0.62	40°15'46.9240"N	104°32'1.4198"W	0.01	
461.07	0.340	314.340	461.06	-2.04	2.05	0.43	40°15'46.9282"N	104°32'1.4221"W	0.28	
555.65	0.340	314.670	555.64	-2.44	2.44	0.03	40°15'46.9321"N	104°32'1.4272"W	0.00	
650.38	0.500	335.330	650.37	-3.02	3.01	-0.34	40°15'46.9378"N	104°32'1.4319"W	0.23	
745.00	0.370	243.010	744.99	-3.26	3.25	-0.78	40°15'46.9402"N	104°32'1.4376"W	0.67	
839.47	0.230	197.010	839.46	-2.94	2.93	-1.11	40°15'46.9371"N	104°32'1.4419"W	0.28	
934.26	0.320	272.230	934.25	-2.77	2.76	-1.43	40°15'46.9354"N	104°32'1.4461"W	0.36	
1028.77	0.360	278.670	1028.75	-2.83	2.81	-1.99	40°15'46.9360"N	104°32'1.4532"W	0.06	
1123.23	0.500	274.200	1123.21	-2.91	2.89	-2.69	40°15'46.9368"N	104°32'1.4623"W	0.15	
1217.59	0.560	285.010	1217.57	-3.07	3.04	-3.55	40°15'46.9384"N	104°32'1.4733"W	0.12	
1312.12	0.150	302.100	1312.10	-3.26	3.22	-4.10	40°15'46.9403"N	104°32'1.4804"W	0.44	
1406.28	0.480	314.490	1406.25	-3.61	3.56	-4.49	40°15'46.9437"N	104°32'1.4854"W	0.36	
1500.74	0.720	312.040	1500.71	-4.29	4.24	-5.21	40°15'46.9504"N	104°32'1.4946"W	0.26	
1595.28	0.520	326.220	1595.24	-5.05	4.99	-5.89	40°15'46.9580"N	104°32'1.5032"W	0.27	
1689.84	0.510	325.710	1689.80	-5.76	5.70	-6.36	40°15'46.9650"N	104°32'1.5093"W	0.01	
1784.21	0.300	323.600	1784.17	-6.31	6.24	-6.75	40°15'46.9704"N	104°32'1.5141"W	0.22	
1878.69	0.320	292.190	1878.65	-6.61	6.54	-7.14	40°15'46.9734"N	104°32'1.5191"W	0.18	
1931.00	0.430	252.260	1930.95	-6.61	6.54	-7.46	40°15'46.9734"N	104°32'1.5233"W	0.53	Tie on to Gyro Survey
1987.00	0.090	55.470	1986.95	-6.58	6.50	-7.62	40°15'46.9730"N	104°32'1.5254"W	0.92	First BH MWD Survey
2082.00	0.030	88.500	2081.95	-6.62	6.54	-7.54	40°15'46.9735"N	104°32'1.5243"W	0.07	
2271.00	0.280	62.140	2270.95	-6.83	6.76	-7.08	40°15'46.9755"N	104°32'1.5184"W	0.13	
2366.00	0.220	137.290	2365.95	-6.80	6.73	-6.75	40°15'46.9753"N	104°32'1.5141"W	0.32	
2460.00	0.130	282.950	2459.95	-6.69	6.62	-6.73	40°15'46.9742"N	104°32'1.5139"W	0.36	
2555.00	0.250	74.490	2554.95	-6.77	6.70	-6.64	40°15'46.9750"N	104°32'1.5127"W	0.39	
2649.00	0.160	271.700	2648.95	-6.83	6.76	-6.57	40°15'46.9755"N	104°32'1.5118"W	0.43	
2744.00	0.220	202.090	2743.95	-6.67	6.60	-6.77	40°15'46.9739"N	104°32'1.5144"W	0.23	
2838.00	0.310	132.400	2837.95	-6.33	6.26	-6.65	40°15'46.9706"N	104°32'1.5129"W	0.33	
2933.00	0.220	273.900	2932.95	-6.16	6.10	-6.64	40°15'46.9690"N	104°32'1.5129"W	0.53	
3027.00	0.220	76.550	3026.95	-6.22	6.15	-6.65	40°15'46.9695"N	104°32'1.5129"W	0.46	
3121.00	0.340	148.830	3120.95	-6.02	5.96	-6.33	40°15'46.9675"N	104°32'1.5088"W	0.37	
3216.00	0.440	197.220	3215.95	-5.43	5.37	-6.29	40°15'46.9617"N	104°32'1.5084"W	0.35	
3310.00	0.220	293.130	3309.95	-5.16	5.09	-6.56	40°15'46.9590"N	104°32'1.5120"W	0.54	
3405.00	0.130	25.900	3404.95	-5.33	5.26	-6.69	40°15'46.9607"N	104°32'1.5135"W	0.27	
3500.00	0.520	120.740	3499.94	-5.20	5.14	-6.27	40°15'46.9594"N	104°32'1.5081"W	0.58	
3594.00	0.390	133.310	3593.94	-4.76	4.70	-5.67	40°15'46.9551"N	104°32'1.5005"W	0.17	
3689.00	0.300	92.640	3688.94	-4.52	4.47	-5.18	40°15'46.9527"N	104°32'1.4942"W	0.27	
3783.00	0.030	73.280	3782.94	-4.51	4.46	-4.92	40°15'46.9526"N	104°32'1.4908"W	0.29	
3878.00	0.060	123.850	3877.94	-4.49	4.44	-4.85	40°15'46.9524"N	104°32'1.4899"W	0.05	
3973.00	0.070	143.410	3972.94	-4.42	4.37	-4.77	40°15'46.9517"N	104°32'1.4890"W	0.03	
4067.00	0.030	88.580	4066.94	-4.37	4.32	-4.72	40°15'46.9512"N	104°32'1.4882"W	0.06	
4161.00	0.040	91.320	4160.94	-4.37	4.32	-4.66	40°15'46.9512"N	104°32'1.4875"W	0.01	



Actual Wellpath Report
GUTTERSEN D10-735 AWP
Page 3 of 7



REFERENCE WELLPATH IDENTIFICATION			
Operator	NOBLE ENERGY, INC	Well	GUTTERSEN D10-735
Field	WELD COUNTY (NOBLE NAD 83 GRID)	API/Legal	
Facility	SEC.34-T04N-R64W	Wellbore	GUTTERSEN D10-735 AWB
Slot	SLOT#14 GUTTERSEN D10-735 (466' FSL & 1693' FEL,SEC.34)		

WELLPATH DATA (180 stations)										
MD [ft]	Inclination [°]	Azimuth [°]	TVD [ft]	Vert Sect [ft]	North [ft]	East [ft]	Latitude	Longitude	DLS [°/100ft]	Comments
4256.00	0.130	352.070	4255.94	-4.47	4.43	-4.64	40°15'46.9523"N	104°32'1.4872"W	0.15	
4350.00	0.040	81.170	4349.94	-4.58	4.54	-4.62	40°15'46.9533"N	104°32'1.4870"W	0.14	
4444.00	0.090	168.790	4443.94	-4.52	4.47	-4.58	40°15'46.9527"N	104°32'1.4864"W	0.10	
4539.00	0.090	116.170	4538.94	-4.41	4.37	-4.49	40°15'46.9516"N	104°32'1.4853"W	0.08	
4633.00	0.090	159.250	4632.94	-4.31	4.26	-4.40	40°15'46.9506"N	104°32'1.4842"W	0.07	
4728.00	0.070	135.310	4727.94	-4.20	4.15	-4.33	40°15'46.9495"N	104°32'1.4833"W	0.04	
4823.00	0.060	108.610	4822.94	-4.14	4.10	-4.25	40°15'46.9489"N	104°32'1.4822"W	0.03	
4917.00	0.070	127.870	4916.94	-4.09	4.04	-4.15	40°15'46.9484"N	104°32'1.4810"W	0.03	
5011.00	0.100	141.750	5010.94	-3.99	3.94	-4.06	40°15'46.9474"N	104°32'1.4798"W	0.04	
5105.00	0.040	123.010	5104.94	-3.90	3.86	-3.98	40°15'46.9466"N	104°32'1.4788"W	0.07	
5200.00	2.560	167.660	5199.91	-1.81	1.77	-3.50	40°15'46.9259"N	104°32'1.4729"W	2.66	
5294.00	5.240	121.720	5293.70	2.54	-2.54	0.60	40°15'46.8829"N	104°32'1.4206"W	4.17	
5389.00	5.240	116.010	5388.30	6.80	-6.72	8.19	40°15'46.8407"N	104°32'1.3233"W	0.55	
5483.00	5.110	114.340	5481.92	10.49	-10.33	15.86	40°15'46.8042"N	104°32'1.2248"W	0.21	
5578.00	4.690	114.490	5576.57	13.92	-13.68	23.25	40°15'46.7703"N	104°32'1.1300"W	0.44	
5672.00	4.620	114.580	5670.26	17.15	-16.85	30.19	40°15'46.7382"N	104°32'1.0409"W	0.07	
5767.00	4.710	112.360	5764.95	20.30	-19.93	37.28	40°15'46.7071"N	104°32'0.9500"W	0.21	
5861.00	5.010	110.670	5858.61	23.29	-22.84	44.69	40°15'46.6775"N	104°32'0.8548"W	0.35	
5956.00	5.200	112.570	5953.23	26.49	-25.96	52.55	40°15'46.6458"N	104°32'0.7539"W	0.27	
6050.00	4.870	113.210	6046.87	29.77	-29.17	60.15	40°15'46.6133"N	104°32'0.6563"W	0.36	
6145.00	5.230	148.430	6141.52	35.11	-34.45	66.12	40°15'46.5605"N	104°32'0.5800"W	3.23	
6239.00	11.340	159.800	6234.50	47.50	-46.78	71.56	40°15'46.4380"N	104°32'0.5116"W	6.70	
6334.00	18.570	162.730	6326.23	70.82	-70.02	79.29	40°15'46.2075"N	104°32'0.4152"W	7.65	
6428.00	26.780	170.520	6412.91	106.14	-105.27	87.23	40°15'45.8584"N	104°32'0.3176"W	9.28	
6523.00	35.860	174.430	6493.99	155.11	-154.18	93.47	40°15'45.3744"N	104°32'0.2440"W	9.79	
6617.00	44.710	176.450	6565.62	215.69	-214.71	98.20	40°15'44.7758"N	104°32'0.1915"W	9.52	
6712.00	52.920	177.730	6628.13	287.06	-286.05	101.78	40°15'44.0705"N	104°32'0.1554"W	8.70	
6806.00	61.270	177.750	6679.15	365.88	-364.84	104.89	40°15'43.2916"N	104°32'0.1264"W	8.88	
6900.00	70.440	180.010	6717.56	451.55	-450.50	106.50	40°15'42.4450"N	104°32'0.1176"W	10.00	
6995.00	78.940	179.350	6742.62	543.10	-542.05	107.02	40°15'41.5404"N	104°32'0.1238"W	8.97	
7089.00	87.810	181.710	6753.46	636.35	-635.31	106.14	40°15'40.6188"N	104°32'0.1483"W	9.76	
7184.00	89.720	181.730	6755.51	731.25	-730.25	103.29	40°15'39.6811"N	104°32'0.1984"W	2.01	
7278.00	90.280	179.840	6755.51	825.22	-824.23	102.00	40°15'38.7525"N	104°32'0.2282"W	2.10	
7373.00	89.570	180.060	6755.63	920.21	-919.23	102.09	40°15'37.8138"N	104°32'0.2405"W	0.78	
7467.00	89.940	180.030	6756.03	1014.20	-1013.23	102.01	40°15'36.8850"N	104°32'0.2546"W	0.39	
7561.00	90.030	179.720	6756.06	1108.20	-1107.23	102.22	40°15'35.9561"N	104°32'0.2652"W	0.34	
7656.00	90.220	181.270	6755.85	1203.18	-1202.22	101.40	40°15'35.0176"N	104°32'0.2892"W	1.64	
7751.00	90.090	181.070	6755.59	1298.14	-1297.20	99.46	40°15'34.0793"N	104°32'0.3275"W	0.25	
7845.00	89.660	179.370	6755.80	1392.12	-1391.20	99.10	40°15'33.1505"N	104°32'0.3454"W	1.87	
7940.00	90.520	180.440	6755.65	1487.12	-1486.20	99.25	40°15'32.2118"N	104°32'0.3567"W	1.45	
8034.00	90.030	180.290	6755.20	1581.10	-1580.19	98.66	40°15'31.2830"N	104°32'0.3777"W	0.55	
8129.00	90.280	180.800	6754.94	1676.09	-1675.19	97.75	40°15'30.3445"N	104°32'0.4027"W	0.60	
8223.00	89.820	180.650	6754.86	1770.06	-1769.18	96.56	40°15'29.4158"N	104°32'0.4312"W	0.51	
8318.00	89.780	180.390	6755.19	1865.04	-1864.18	95.70	40°15'28.4772"N	104°32'0.4557"W	0.28	
8412.00	89.820	179.710	6755.52	1959.04	-1958.17	95.62	40°15'27.5484"N	104°32'0.4700"W	0.72	



Actual Wellpath Report
GUTTERSEN D10-735 AWP
Page 4 of 7



REFERENCE WELLPATH IDENTIFICATION			
Operator	NOBLE ENERGY, INC	Well	GUTTERSEN D10-735
Field	WELD COUNTY (NOBLE NAD 83 GRID)	API/Legal	
Facility	SEC.34-T04N-R64W	Wellbore	GUTTERSEN D10-735 AWB
Slot	SLOT#14 GUTTERSEN D10-735 (466' FSL & 1693' FEL,SEC.34)		

WELLPATH DATA (180 stations)										
MD [ft]	Inclination [°]	Azimuth [°]	TVD [ft]	Vert Sect [ft]	North [ft]	East [ft]	Latitude	Longitude	DLS [°/100ft]	Comments
8507.00	90.060	179.970	6755.62	2054.03	-2053.17	95.88	40°15'26.6097"N	104°32'0.4799"W	0.37	
8601.00	89.600	179.860	6755.90	2148.03	-2147.17	96.02	40°15'25.6808"N	104°32'0.4913"W	0.50	
8696.00	89.750	180.080	6756.44	2243.02	-2242.17	96.07	40°15'24.7421"N	104°32'0.5040"W	0.28	
8790.00	89.780	179.760	6756.82	2337.02	-2336.17	96.20	40°15'23.8133"N	104°32'0.5156"W	0.34	
8885.00	90.220	180.210	6756.82	2432.01	-2431.17	96.23	40°15'22.8745"N	104°32'0.5286"W	0.66	
9074.00	90.120	180.320	6756.26	2620.99	-2620.17	95.35	40°15'21.0071"N	104°32'0.5664"W	0.08	
9168.00	89.660	180.230	6756.44	2714.98	-2714.17	94.90	40°15'20.0783"N	104°32'0.5855"W	0.50	
9358.00	90.250	179.790	6756.59	2904.97	-2904.16	94.87	40°15'18.2009"N	104°32'0.6126"W	0.39	
9452.00	90.090	180.330	6756.31	2998.96	-2998.16	94.77	40°15'17.2721"N	104°32'0.6271"W	0.60	
9546.00	90.250	180.240	6756.03	3092.95	-3092.16	94.30	40°15'16.3433"N	104°32'0.6463"W	0.20	
9640.00	90.680	180.570	6755.27	3186.94	-3186.16	93.64	40°15'15.4146"N	104°32'0.6681"W	0.58	
9735.00	90.030	180.460	6754.68	3281.92	-3281.15	92.79	40°15'14.4760"N	104°32'0.6925"W	0.69	
9830.00	90.740	180.130	6754.04	3376.90	-3376.15	92.30	40°15'13.5374"N	104°32'0.7121"W	0.82	
9924.00	90.400	180.810	6753.11	3470.88	-3470.14	91.53	40°15'12.6087"N	104°32'0.7353"W	0.81	
10018.00	90.220	180.330	6752.60	3564.86	-3564.13	90.59	40°15'11.6800"N	104°32'0.7606"W	0.55	
10113.00	89.720	180.020	6752.65	3659.85	-3659.13	90.30	40°15'10.7413"N	104°32'0.7777"W	0.62	
10207.00	90.150	180.060	6752.76	3753.85	-3753.13	90.24	40°15'9.8125"N	104°32'0.7917"W	0.46	
10301.00	89.970	179.730	6752.66	3847.84	-3847.13	90.41	40°15'8.8837"N	104°32'0.8027"W	0.40	
10396.00	89.750	180.360	6752.89	3942.84	-3942.13	90.33	40°15'7.9449"N	104°32'0.8170"W	0.70	
10490.00	89.690	180.070	6753.35	4036.83	-4036.13	89.98	40°15'7.0162"N	104°32'0.8348"W	0.32	
10585.00	90.000	180.220	6753.61	4131.82	-4131.13	89.74	40°15'6.0775"N	104°32'0.8513"W	0.36	
10679.00	89.630	180.190	6753.91	4225.81	-4225.12	89.40	40°15'5.1487"N	104°32'0.8688"W	0.39	
10774.00	90.120	180.980	6754.12	4320.79	-4320.12	88.43	40°15'4.2101"N	104°32'0.8947"W	0.98	
10869.00	89.850	180.730	6754.14	4415.76	-4415.11	87.02	40°15'3.2717"N	104°32'0.9263"W	0.39	
10963.00	89.970	180.510	6754.29	4509.74	-4509.10	86.00	40°15'2.3430"N	104°32'0.9526"W	0.27	
11058.00	90.580	180.540	6753.83	4604.72	-4604.10	85.13	40°15'1.4044"N	104°32'0.9772"W	0.64	
11152.00	90.060	181.140	6753.31	4698.69	-4698.08	83.75	40°15'0.4758"N	104°32'1.0082"W	0.84	
11247.00	90.280	179.850	6753.03	4793.67	-4793.08	82.93	40°14'59.5372"N	104°32'1.0321"W	1.38	
11341.00	89.880	180.240	6752.90	4887.66	-4887.08	82.86	40°14'58.6084"N	104°32'1.0463"W	0.59	
11436.00	89.510	178.910	6753.40	4982.66	-4982.07	83.56	40°14'57.6697"N	104°32'1.0505"W	1.45	
11531.00	89.170	178.990	6754.50	5077.65	-5077.05	85.30	40°14'56.7310"N	104°32'1.0414"W	0.37	
11625.00	90.550	179.180	6754.72	5171.65	-5171.03	86.80	40°14'55.8021"N	104°32'1.0353"W	1.48	
11720.00	90.490	179.610	6753.86	5266.64	-5266.02	87.81	40°14'54.8634"N	104°32'1.0357"W	0.46	
11814.00	90.490	179.380	6753.06	5360.64	-5360.02	88.63	40°14'53.9345"N	104°32'1.0382"W	0.24	
11909.00	90.400	179.710	6752.32	5455.63	-5455.01	89.39	40°14'52.9958"N	104°32'1.0419"W	0.36	
12003.00	90.550	179.330	6751.54	5549.63	-5549.00	90.18	40°14'52.0669"N	104°32'1.0449"W	0.43	
12098.00	90.550	179.560	6750.63	5644.63	-5644.00	91.10	40°14'51.1282"N	104°32'1.0464"W	0.24	
12192.00	90.220	178.960	6750.00	5738.62	-5737.99	92.31	40°14'50.1993"N	104°32'1.0440"W	0.73	
12287.00	90.340	178.500	6749.53	5833.61	-5832.96	94.42	40°14'49.2606"N	104°32'1.0301"W	0.50	
12381.00	91.140	179.030	6748.32	5927.60	-5926.93	96.44	40°14'48.3319"N	104°32'1.0172"W	1.02	
12476.00	90.030	178.460	6747.35	6022.59	-6021.90	98.52	40°14'47.3932"N	104°32'1.0037"W	1.31	
12571.00	90.150	179.470	6747.20	6117.58	-6116.88	100.24	40°14'46.4545"N	104°32'0.9950"W	1.07	
12665.00	90.180	179.530	6746.93	6211.58	-6210.88	101.06	40°14'45.5256"N	104°32'0.9976"W	0.07	
12760.00	89.570	179.290	6747.14	6306.58	-6305.87	102.04	40°14'44.5868"N	104°32'0.9983"W	0.69	
12855.00	90.060	180.000	6747.44	6401.58	-6400.87	102.62	40°14'43.6480"N	104°32'1.0041"W	0.91	



Actual Wellpath Report
GUTTERSEN D10-735 AWP
Page 5 of 7



REFERENCE WELLPATH IDENTIFICATION			
Operator	NOBLE ENERGY, INC	Well	GUTTERSEN D10-735
Field	WELD COUNTY (NOBLE NAD 83 GRID)	API/Legal	
Facility	SEC.34-T04N-R64W	Wellbore	GUTTERSEN D10-735 AWB
Slot	SLOT#14 GUTTERSEN D10-735 (466' FSL & 1693' FEL,SEC.34)		

WELLPATH DATA (180 stations) † = interpolated, ‡ = extrapolated station										
MD [ft]	Inclination [°]	Azimuth [°]	TVD [ft]	Vert Sect [ft]	North [ft]	East [ft]	Latitude	Longitude	DLS [°/100ft]	Comments
12949.00	90.800	178.090	6746.74	6495.57	-6494.85	104.19	40°14'42.7192"N	104°32'0.9971"W	2.18	
13044.00	90.800	178.620	6745.41	6590.54	-6589.80	106.92	40°14'41.7807"N	104°32'0.9753"W	0.56	
13139.00	89.850	179.480	6744.87	6685.54	-6684.78	108.49	40°14'40.8420"N	104°32'0.9683"W	1.35	
13233.00	89.010	178.790	6745.81	6779.53	-6778.77	109.91	40°14'39.9131"N	104°32'0.9632"W	1.16	
13328.00	88.830	179.190	6747.60	6874.51	-6873.74	111.59	40°14'38.9745"N	104°32'0.9550"W	0.46	
13422.00	89.540	178.940	6748.94	6968.50	-6967.71	113.12	40°14'38.0457"N	104°32'0.9484"W	0.80	
13517.00	89.630	178.860	6749.62	7063.49	-7062.69	114.94	40°14'37.1070"N	104°32'0.9383"W	0.13	
13611.00	90.860	180.770	6749.22	7157.48	-7156.69	115.25	40°14'36.1782"N	104°32'0.9475"W	2.42	
13706.00	90.660	180.850	6747.96	7252.45	-7251.67	113.90	40°14'35.2398"N	104°32'0.9782"W	0.23	
13801.00	90.470	181.070	6747.03	7347.41	-7346.65	112.31	40°14'34.3014"N	104°32'1.0121"W	0.31	
13895.00	90.570	180.660	6746.17	7441.37	-7440.63	110.89	40°14'33.3729"N	104°32'1.0436"W	0.45	
13990.00	90.870	180.680	6744.98	7536.34	-7535.62	109.78	40°14'32.4344"N	104°32'1.0713"W	0.32	
14084.00	90.380	180.840	6743.95	7630.31	-7629.61	108.54	40°14'31.5059"N	104°32'1.1005"W	0.55	
14179.00	90.810	179.660	6742.97	7725.29	-7724.60	108.12	40°14'30.5673"N	104°32'1.1192"W	1.32	
14273.00	90.530	180.800	6741.87	7819.28	-7818.59	107.74	40°14'29.6385"N	104°32'1.1373"W	1.25	
14368.00	90.010	180.860	6741.42	7914.25	-7913.58	106.37	40°14'28.7001"N	104°32'1.1684"W	0.55	
14463.00	90.500	180.720	6741.00	8009.22	-8008.57	105.06	40°14'27.7616"N	104°32'1.1986"W	0.54	
14557.00	89.770	179.380	6740.78	8103.21	-8102.56	104.98	40°14'26.8328"N	104°32'1.2129"W	1.62	
14652.00	89.800	179.490	6741.13	8198.21	-8197.56	105.91	40°14'25.8940"N	104°32'1.2142"W	0.12	
14746.00	89.950	178.980	6741.34	8292.21	-8291.55	107.17	40°14'24.9651"N	104°32'1.2112"W	0.57	
14841.00	90.100	180.770	6741.30	8387.20	-8386.55	107.38	40°14'24.0264"N	104°32'1.2219"W	1.89	
14936.00	90.010	179.580	6741.20	8482.19	-8481.54	107.09	40°14'23.0877"N	104°32'1.2390"W	1.26	
15030.00	89.800	178.730	6741.36	8576.19	-8575.53	108.47	40°14'22.1589"N	104°32'1.2343"W	0.93	
15125.00	89.670	178.660	6741.80	8671.18	-8670.51	110.64	40°14'21.2202"N	104°32'1.2198"W	0.16	
15219.00	90.170	179.330	6741.93	8765.18	-8764.49	112.28	40°14'20.2913"N	104°32'1.2117"W	0.89	
15314.00	91.210	181.050	6740.79	8860.16	-8859.48	111.97	40°14'19.3527"N	104°32'1.2291"W	2.12	
15409.00	90.070	180.220	6739.73	8955.13	-8954.47	110.92	40°14'18.4142"N	104°32'1.2560"W	1.48	
15503.00	91.270	179.430	6738.63	9049.12	-9048.46	111.20	40°14'17.4855"N	104°32'1.2655"W	1.53	
15598.00	90.230	179.530	6737.38	9144.11	-9143.44	112.07	40°14'16.5468"N	104°32'1.2678"W	1.10	
15692.00	89.950	178.210	6737.23	9238.10	-9237.42	113.92	40°14'15.6179"N	104°32'1.2571"W	1.44	
15787.00	90.230	178.520	6737.09	9333.08	-9332.38	116.63	40°14'14.6793"N	104°32'1.2355"W	0.44	
15881.00	89.950	178.680	6736.94	9427.07	-9426.35	118.93	40°14'13.7505"N	104°32'1.2191"W	0.34	
15976.00	90.130	178.700	6736.87	9522.07	-9521.33	121.10	40°14'12.8118"N	104°32'1.2044"W	0.19	
16164.00	90.410	180.860	6735.99	9710.05	-9709.32	121.82	40°14'10.9541"N	104°32'1.2215"W	1.16	
16259.00	90.320	181.460	6735.38	9805.00	-9804.29	119.90	40°14'10.0158"N	104°32'1.2596"W	0.64	
16353.00	90.260	180.770	6734.90	9898.96	-9898.27	118.07	40°14'9.0874"N	104°32'1.2964"W	0.74	
16448.00	90.200	181.350	6734.52	9993.92	-9993.26	116.31	40°14'8.1490"N	104°32'1.3324"W	0.61	
16542.00	90.070	181.090	6734.30	10087.87	-10087.23	114.31	40°14'7.2206"N	104°32'1.3714"W	0.31	
16636.00	90.070	181.260	6734.19	10181.83	-10181.21	112.38	40°14'6.2922"N	104°32'1.4095"W	0.18	
16731.00	90.100	180.930	6734.05	10276.79	-10276.20	110.57	40°14'5.3538"N	104°32'1.4463"W	0.35	
16825.00	90.010	180.810	6733.96	10370.76	-10370.19	109.14	40°14'4.4252"N	104°32'1.4779"W	0.16	
17014.00	90.040	180.910	6733.87	10559.70	-10559.16	106.30	40°14'2.5582"N	104°32'1.5410"W	0.06	
17109.00	89.670	180.520	6734.11	10654.68	-10654.16	105.12	40°14'1.6197"N	104°32'1.5696"W	0.57	
17291.00	90.040	181.010	6734.57	10836.62	-10836.14	102.69	40°13'59.8217"N	104°32'1.6265"W	0.34	Last BH MWD Survey
17315.00†‡	90.040	181.010	6734.56	10860.61	-10860.14	102.26	40°13'59.5846"N	104°32'1.6353"W	0.00	Projection to Bit



Actual Wellpath Report

GUTTERSEN D10-735 AWP

Page 6 of 7



REFERENCE WELLPATH IDENTIFICATION			
Operator	NOBLE ENERGY, INC	Well	GUTTERSEN D10-735
Field	WELD COUNTY (NOBLE NAD 83 GRID)	API/Legal	
Facility	SEC.34-T04N-R64W	Wellbore	GUTTERSEN D10-735 AWB
Slot	SLOT#14 GUTTERSEN D10-735 (466' FSL & 1693' FEL,SEC.34)		

TARGETS								
Name	TVD [ft]	North [ft]	East [ft]	Grid East [US ft]	Grid North [US ft]	Latitude	Longitude	Shape
GUTTERSEN D10-745 SECTION 10	0.00	-0.24	-22.33	3269632.26	1340132.30	40°15'46.9080"N	104°32'1.7160"W	polygon
	2D Polygon: dimensions not calculated							
GUTTERSEN D10-745 SECTION 3	0.00	-0.24	-22.33	3269632.26	1340132.30	40°15'46.9080"N	104°32'1.7160"W	polygon
	2D Polygon: dimensions not calculated							
GUTTERSEN D10-735 REV-1 BHL (200'FSL&1654'FEL,SEC.10)	6737.00	-10860.83	109.17	3269763.75	1329272.20	40°13'59.5770"N	104°32'1.5464"W	point
GUTTERSEN D10-735 LP/TPZ REV-1 (200'FNL&1605'FEL,SEC.3)	6753.00	-664.52	90.94	3269745.52	1339468.05	40°15'40.3319"N	104°32'0.3484"W	point
GUTTERSEN D10-735 REV-1 TARGET	6753.00	-3949.29	90.71	3269745.29	1336183.43	40°15'7.8741"N	104°32'0.8132"W	point

WELLPATH COMPOSITION - Ref Wellbore: GUTTERSEN D10-735 AWB Ref Wellpath: GUTTERSEN D10-735 AWP					
Start MD [ft]	End MD [ft]	Positional Uncertainty Model	Log Name/Comment	Wellbore	Survey Date
0.00	1931.00	Gyrodata 2015 - GC+DROP+COND	Surface Gyros GC+Drop+Cond <87.07-1931'>	GUTTERSEN D10-735 AWB	2/9/2022
1931.00	17315.00	OWSG MWD rev2 (MS+IFR1)	OWSG MWD rev2 + IFR1 8.5" Hole 1987'-17291'>	GUTTERSEN D10-735 AWB	2/15/2022



Actual Wellpath Report

GUTTERSEN D10-735 AWP

Page 7 of 7



REFERENCE WELLPATH IDENTIFICATION			
Operator	NOBLE ENERGY, INC	Well	GUTTERSEN D10-735
Field	WELD COUNTY (NOBLE NAD 83 GRID)	API/Legal	
Facility	SEC.34-T04N-R64W	Wellbore	GUTTERSEN D10-735 AWB
Slot	SLOT#14 GUTTERSEN D10-735 (466' FSL & 1693' FEL,SEC.34)		

WELLPATH COMMENTS				
MD [ft]	Inclination [°]	Azimuth [°]	TVD [ft]	Comment
1931.00	0.430	252.260	1930.95	Tie on to Gyro Survey
1987.00	0.090	55.470	1986.95	First BH MWD Survey
17291.00	90.040	181.010	6734.57	Last BH MWD Survey
17315.00	90.040	181.010	6734.56	Projection to Bit