

HALLIBURTON

iCem[®] Service

NOBLE ENERGY INC-EBUS

GUTTERSON D10-735

Production Casing

Job Date: Thursday, February 17, 2022

Sincerely,

KYLE BATH

Legal Notice

Disclaimer:

All information in this report is provided subject to the terms and conditions which govern the services provided by Halliburton. Halliburton personnel use their best efforts in gathering information and their best judgment in interpreting it, but any interpretation, research, analysis or recommendation furnished by Halliburton are opinions based upon inferences from measurements and empirical relationships and assumptions, which inferences and empirical relationships and assumptions are not infallible, and with respect to which professionals in the industry may differ. iCem 3D Displacement results are used to understand how fluids intermix during a cement job. Simulation and 3D displacement results are not intended as and should not be used as a replacement for bond logs in determining top of cement. Current 3D model calculations are known to model more volume than the input volume for standard cases due to known calculation improvements required. For rotational cases, the modeled volume will be impacted by the same calculations impacting the standard cases, as well as additional constraints imposed to make the calculation time required operationally feasible. Therefore, until further notice, 3D displacement results should not be used for replacement of a bond log, or used as an identifier of top of cement. HALLIBURTON IS UNABLE TO GUARANTEE THE ACCURACY OF ANY CHART INTERPRETATION, RESEARCH ANALYSIS, OR JOB RECOMMENDATION and any interpretation or recommendation is not for use of or reliance upon by any third party. The customer has full responsibility for any of its decisions which are based on the information provided in this report.

Table of Contents

1.0	Cementing Job Summary	4
1.1	Executive Summary	4
2.0	Real-Time Job Summary	7
2.1	Job Event Log	7
3.0	Attachments.....	9
3.1	Job Chart	9

1.0 Cementing Job Summary

1.1 Executive Summary

Halliburton appreciates the opportunity to perform the cementing services on the Guttersen D10-735 production casing. A pre-job safety meeting was held before the job where details of the job were discussed, potential safety hazards were reviewed, and environmental compliance procedures were outlined.

Job was pumped per design with an average cement density of 13.19 ppg at 7.04 bbl/min. Cement was displaced with 20 bbl. of treated water with retarder and 380 bbl. of treated freshwater displacement. Plug was landed at 2,575 psi and bumped to 3,245 psi. Pressure was bled off and 5.5 bbl. of fluid was returned to the truck. Approximately 45 bbl. of spacer was returned to surface indicating a top of cement around 1,566'.

Halliburton maintains a continuous quality improvement process and appreciates any comments or suggestions that you may have. Halliburton again thanks you for the opportunity to perform service work on this well. We hope to be your solutions provider for future projects.

Respectfully,

Halliburton Fort Lupton

The Road to Excellence Starts with Safety

Sold To #: 345242		Ship To #: 3925499		Quote #:		Sales Order #: 0907682548				
Customer: NOBLE ENERGY INC-EBUS				Customer Rep: Jon Drahota						
Well Name: GUTTERSEN			Well #: D10-735			API/UWI #: 05-123-48914-00				
Field: WATTENBERG		City (SAP): KERSEY		County/Parish: WELD			State: COLORADO			
Legal Description: SW SE-34-4N-64W-466FSL-1693FEL										
Contractor: H & P DRLG				Rig/Platform Name/Num: H & P 517						
Job BOM: 7523										
Well Type: HORIZONTAL OIL										
Sales Person: HALAMERICA\HX41066				Srv Supervisor: Kyle Bath						
Job										
Job depth MD		17302ft		Job Depth TVD		6756ft				
Well Data										
Description	New / Used	Size in	ID in	Weight lbm/ft	Thread	Grade	Top MD ft	Bottom MD ft	Top TVD ft	Bottom TVD ft
Casing		9.625	8.921	36			0	1928	0	1928
Casing		5.5	4.892	17			0	17302	0	6756
Open Hole Section			8.5				1928	17315	1937	6756
Tools and Accessories										
Type	Size in	Qty	Make	Depth ft		Type	Size in	Qty	Make	
Float Shoe	5.5	1	HES	17302		Top Plug	5.5	1	HES	
Float Collar	5.5	1	HES	17258		Bottom Plug	5.5	2	HES	
						Centralizers	5.5	216	Summit	

Fluid Data									
Stage #: 1									
Fluid #	Stage Type	Fluid Name	Qty	Qty UoM	Mixing Density lbm/gal	Yield ft3/sack	Mix Fluid Gal	Rate bbl/min	Total Mix Fluid Gal
1	Spacer	Tuned Prime Cement Spacer	120	bbl	11.5	3.92			4242
Fluid #	Stage Type	Fluid Name	Qty	Qty UoM	Mixing Density lbm/gal	Yield ft3/sack	Mix Fluid Gal	Rate bbl/min	Total Mix Fluid Gal
2	Cap Cement	ElastiCem™	140	sack	13.2	1.6	7.63	8	1068
Fluid #	Stage Type	Fluid Name	Qty	Qty UoM	Mixing Density lbm/gal	Yield ft3/sack	Mix Fluid Gal	Rate bbl/min	Total Mix Fluid Gal
3	Lead Cement	ElastiCem™	697	sack	13.2	1.67	8.03	8	5597
Fluid #	Stage Type	Fluid Name	Qty	Qty UoM	Mixing Density lbm/gal	Yield ft3/sack	Mix Fluid Gal	Rate bbl/min	Total Mix Fluid Gal
4	Tail Cement	NeoCem™	1171	sack	13.2	2.04	9.79	8	11464
Fluid #	Stage Type	Fluid Name	Qty	Qty UoM	Mixing Density lbm/gal	Yield ft3/sack	Mix Fluid Gal	Rate bbl/min	Total Mix Fluid Gal
5	Displacement	Treated Fresh Water	400	bbl	8.33				16765
Cement Left In Pipe		Amount	47 ft		Reason			Shoe Joint	
Mix Water:		pH 7	Mix Water Chloride:		0 ppm		Mix Water Temperature:		66 °F
Plug Bumped?		Yes	Plug Displaced by:		8.3 lb/gal Treated Water		Disp. Temperature:		66 °F
Cement Returns:		0 bbl.	Bump Pressure:		2575 psi		Floats Held?		Yes

2.0 Real-Time Job Summary

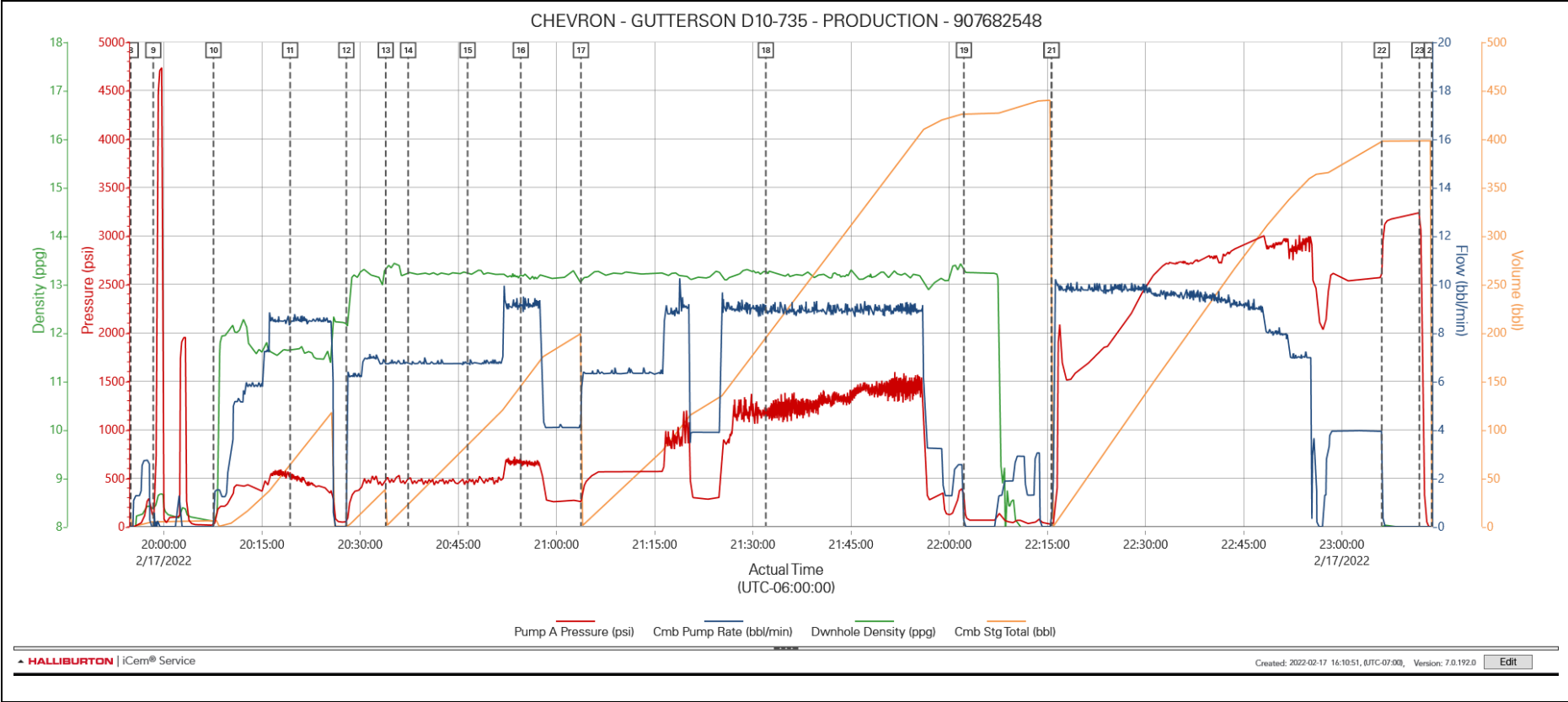
2.1 Job Event Log

Seq. No.	Activity	Date	Time	Comments
1	Call Out	2/17/2022	10:00:00	CREW CALLED OUT, REQUESTED ON LOCATION 16:00
2	Depart Yard Safety Meeting	2/17/2022	13:45:00	PRE CONVOY SAFETY MEETING WITH ALL HES EE
3	Crew Leave Yard	2/17/2022	14:00:00	CREW DEPART YARD FOR LOCATION
4	Arrive At Loc	2/17/2022	15:00:00	ARRIVE ON LOCATION, RECIEVED NUMBERS FROM CO REP, TD 17315, TP 17301.8, SJ 43.89, CSG 5.5 17#, PREV CSG 9 5/8 36#, HOLE 8.5, MUD 10.2, TVD 6756, 216 CENTALIZERS, WATER TEST, TEMP 66, CHLORIDES 0, PH 7
5	Assessment Of Location Safety Meeting	2/17/2022	15:15:00	SAFETY MEETING WITH ALL HES EE TO ASSESS ALL HAZARDS
6	Safety Meeting - Pre Rig-Up	2/17/2022	15:30:00	PRE RIG UP SAFETY MEETING WITH ALL HES EE
7	Safety Meeting - Pre Job	2/17/2022	19:00:00	PRE JOB SAFETY MEETING WITH RIG CREW AND CO REP
8	Start Job	2/17/2022	19:54:57	START RECORDING DATA
9	Test Lines	2/17/2022	19:58:23	TEST LINES TO 4700 PSI, TEST IBOP TO 2000 PSI
10	Pump Spacer 1	2/17/2022	20:08:09	PUMP 120 BBLS TUNED PRIME SPACER 11.5 PPG, 8.5 BPM 600 PSI
11	Check Weight	2/17/2022	20:19:18	VERIFY WEIGHT ON PRESSURIZED MUD SCALES
12	Pump Cap Cement	2/17/2022	20:25:50	MIX AND PUMP 140 SKS 39.9 BBLS CAP CEMENT 13.2 PPG, 1.6 FT3/SK, 7.63 GAL/SK 7 BPM 500 PSI, CALCULATED TOCC 999

13	Pump Lead Cement	2/17/2022	20:33:55	MIX AND PUMP 697 SKS 207.3 BBLS LEAD CEMENT 13.2 PPG, 1.67 FT3/SK, 8.03 GAL/SK 9 BPM 700 PSI, CALCULATED TOLC 1832
14	Check Weight	2/17/2022	20:37:20	VERIFY WEIGHT ON PRESSURIZED MUD SCALES
15	Check Weight	2/17/2022	20:46:25	VERIFY WEIGHT ON PRESSURIZED MUD SCALES
16	Check Weight	2/17/2022	20:54:32	VERIFY WEIGHT ON PRESSURIZED MUD SCALES
17	Pump Tail Cement	2/17/2022	21:03:45	MIX AND PUMP 1171 SKS 425.5 BBLS TAIL CEMENT 13.2 PPG, 2.04 FT3/SK, 9.79 GAL/SK 9 BPM 1300 PSI, CALCULATED TOTC 6897
18	Check Weight	2/17/2022	21:31:59	VERIFY WEIGHT ON PRESSURIZED MUD SCALES
19	Shutdown	2/17/2022	22:02:18	SHUTDOWN, WASH UP PUMPS AND LINES TO TANK
20	Drop Top Plug	2/17/2022	22:15:36	LAUNCH TOP PLUG
21	Pump Displacement	2/17/2022	22:15:38	PUMP 400 BBLS BIOCIDES DISPLACEMENT, FIRST 20 BBLS W/MMCR, 10 BPM 2950 PSI, RECIEVED 45 BBLS TUNED PRIME SPACER TO SURFACE
22	Bump Plug	2/17/2022	23:06:52	BUMPED PLUG AT 2575 PSI TOOK TO 3245 PSI
23	Check Floats	2/17/2022	23:11:52	FLOATS HELD TOOK 5.5 BBLS BACK
24	End Job	2/17/2022	23:13:43	STOP RECORDING DATA
25	Safety Meeting - Pre Rig-Down	2/17/2022	23:15:00	PRE RIG DOWN SAFETY MEETING WITH ALL HES EE
26	Depart Location Safety Meeting	2/18/2022	00:15:00	PRE DEPARTURE SAFETY MEETING WITH ALL HES EE
27	Crew Leave Location	2/18/2022	00:50:00	THANK YOU FOR USING HALLIBURTON, KYLE BATH AND CREW

3.0 Attachments

3.1 Job Chart



iCem® Service

(v. 6.0.286.0)