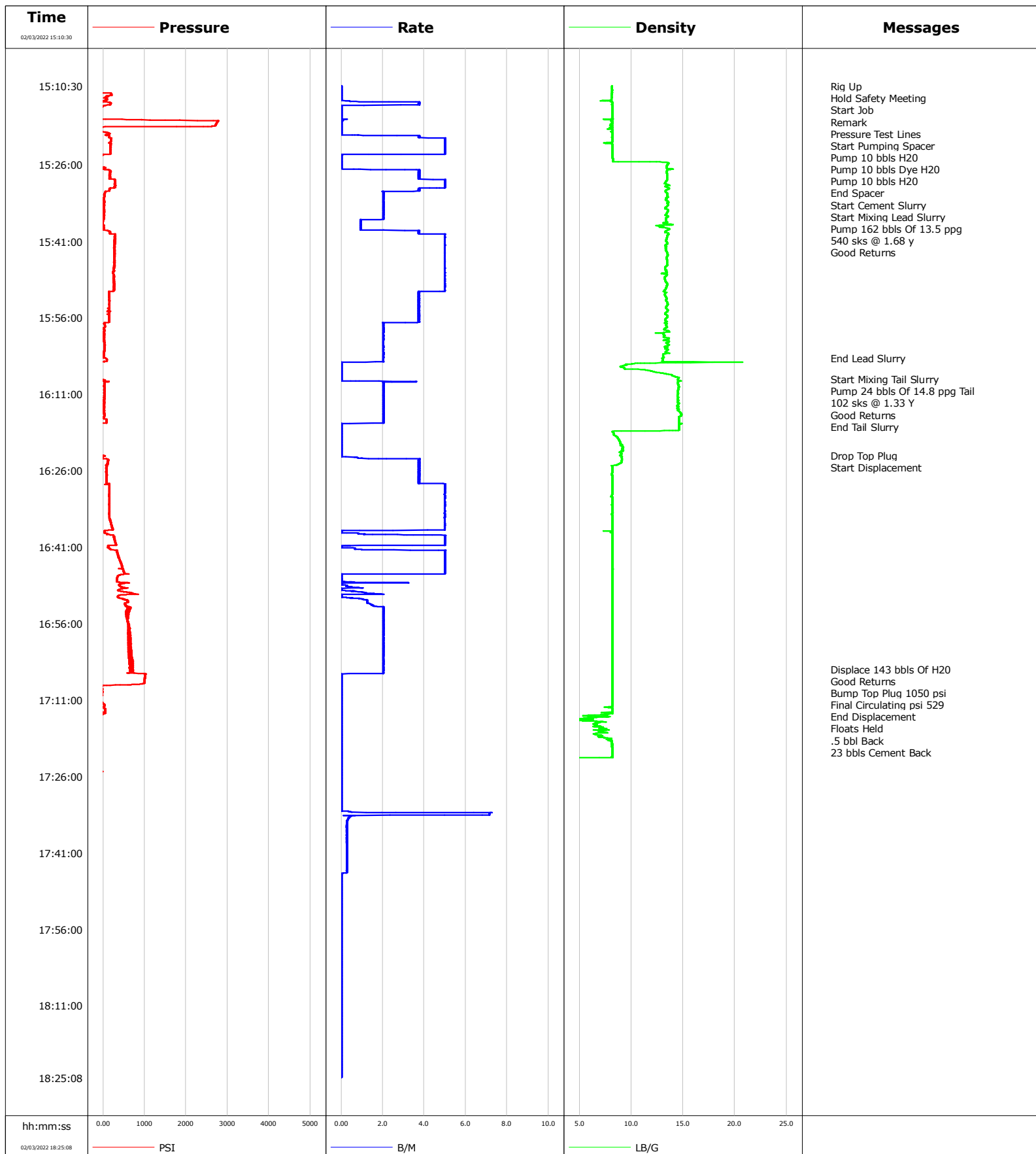


Well	Guttersen D10-735	Client	Chevron
Field	DJ	SIR No.	
Engineer	Justin Zika	Job Type	Surface
Country	United States	Job Date	02-03-2022



Cementing Service Report

				Customer Chevron				Job Number			
Well Guttersen D10-735			Location (legal)			Schlumberger Location			Job Start Feb/03/2022		
Field DJ		Formation Name/Type Shale		Deviation deg		Bit Size in		Well MD 1938.0 ft		Well TVD ft	
County Weld		State/Province Colorado		BHP psi		BHST 120 degF		BHCT 90 degF		Pore Press. Gradient lb/gal	
Well Master 0065878355		API/UWI 05-123-48914									
Rig Name H&P 517		Drilled For Oil		Service Via Land		Casing/ Liner					
						Depth, ft		Size, in		Weight, lb/ft	
										Grade	
										Thread	
Offshore Zone		Well Class New		Well Type New Well Completion		1928.0		9.6		36.0	
						0.0		0.0		0.0	
Drilling Fluid Type		Max. Density lb/gal		Plastic Viscosity cP		Tubing/Drill Pipe					
						T/D		Depth, ft		Size, in	
										Weight, lb/ft	
										Grade	
										Thread	
Service Line Cementing		Job Type Surface									
Max. Allowed Tub. Press psi		Max. Allowed Ann. Press psi		WH Connection		Perforations/Open Hole					
						Top, ft		Bottom, ft		shot/ft	
										No. of Shots	
										Total Interval ft	
						ft		ft			
						ft		ft			
						ft		ft		Diameter in	
						Treat Down Casing		Displacement 143.0 bbl		Packer Type	
										Packer Depth ft	
						Tubing Vol. bbl		Casing Vol. 146.5 bbl		Annular Vol. bbl	
										Openhole Vol. bbl	
Casing/Tubing Secured <input checked="" type="checkbox"/>		1 Hole Vol. Circulated prior to Cement <input checked="" type="checkbox"/>				Casing Tools				Squeeze Job	
Lift Pressure 938 psi						Shoe Type Float				Squeeze Type	
Pipe Rotated <input type="checkbox"/>		Pipe Reciprocated <input type="checkbox"/>				Shoe Depth 1928.0 ft				Tool Type	
No. Centralizers		Top Plugs		Bottom Plugs		Stage Tool Type				Tool Depth ft	
Cement Head Type						Stage Tool Depth ft				Tail Pipe Size in	
Job Scheduled For Feb/03/2022		Arrived on Location Feb/03/2022		Leave Location Feb/03/2022		Collar Type Float				Tail Pipe Depth ft	
						Collar Depth 1881.0 ft				Sqz. Total Vol. bbl	
Date	Time 24-hr clock	Treating Pressure PSI	Flow Rate B/M	Density LB/G	Volume BBL	Message					
02/03/2022	15:10:30	-92	0.0	8.15	0.0	Started Acquisition					
02/03/2022	15:10:32	-92	0.0	8.15	0.0	Start Job					
02/03/2022	15:10:35	-92	0.0	8.15	0.0	Remark					
02/03/2022	15:15:30	-56	0.0	8.17	2.6						
02/03/2022	15:17:00	-60	0.0	8.22	2.6	Pressure Test Lines					
02/03/2022	15:20:30	155	3.8	8.17	3.6						
02/03/2022	15:24:00	13	0.0	8.18	20.8	End Spacer					
02/03/2022	15:25:30	-42	0.0	13.25	20.8						
02/03/2022	15:26:00	-42	0.0	13.49	20.8	Start Cement Slurry					
02/03/2022	15:35:30	22	2.0	13.41	47.7						
02/03/2022	15:45:30	278	5.0	13.46	84.6						
02/03/2022	15:50:30	251	5.0	13.28	109.5						
02/03/2022	15:55:30	146	3.8	13.44	128.7						
02/03/2022	16:00:30	31	2.0	13.30	141.4						
02/03/2022	16:04:00	63	2.0	12.98	148.5	End Lead Slurry					
02/03/2022	16:05:30	-51	0.0	9.08	149.9						
02/03/2022	16:08:00	-56	0.0	14.49	149.9	Start Mixing Tail Slurry					
02/03/2022	16:10:30	31	2.0	14.51	154.2						
02/03/2022	16:15:30	22	2.0	14.60	164.4						
02/03/2022	16:16:00	81	2.0	14.60	165.4	End Tail Slurry					
02/03/2022	16:20:30	-51	0.0	8.95	167.0						

Well Guttersen D10-735			Field DJ		Job Start Feb/03/2022	Customer Chevron		Job Number
Date	Time 24-hr clock	Treating Pressure PSI	Flow Rate B/M	Density LB/G	Volume BBL	Message		
02/03/2022	16:25:30	77	3.7	8.18	174.1			
02/03/2022	16:30:30	146	5.0	8.17	195.3			
02/03/2022	16:35:30	164	5.0	8.18	220.2			
02/03/2022	16:40:30	315	5.0	8.18	241.1			
02/03/2022	16:45:30	480	5.0	8.18	262.0			
02/03/2022	16:50:30	384	0.0	8.18	267.4			
02/03/2022	16:55:30	603	2.0	8.17	275.2			
02/03/2022	17:00:30	635	2.0	8.17	285.4			
02/03/2022	17:05:00	695	2.0	8.17	294.6	Displace 143 bbls Of H2O		
02/03/2022	17:05:30	640	2.0	8.17	295.6			
02/03/2022	17:10:30	-28	0.0	8.18	296.3			
02/03/2022	17:15:30	-42	0.0	6.82	296.3			
02/03/2022	17:20:30	-42	0.0	8.18	296.3			
02/03/2022	17:25:30	-38	0.0	0.19	296.3			
02/03/2022	17:30:30	-42	0.0	0.06	296.3			
02/03/2022	17:35:30	-47	0.3	0.06	300.8			
02/03/2022	17:40:30	-47	0.3	0.07	302.2			
02/03/2022	17:45:30	-47	0.0	0.07	303.5			
02/03/2022	17:50:30	-51	0.0	0.07	303.5			
02/03/2022	17:55:30	-56	0.0	0.07	303.5			
02/03/2022	18:00:30	-56	0.0	0.07	303.5			
02/03/2022	18:05:30	-56	0.0	0.07	303.5			
02/03/2022	18:10:30	-56	0.0	0.07	303.5			
02/03/2022	18:15:30	-60	0.0	0.07	303.5			

Post Job Summary

Average Pump Rates, bbl/min					Volume of Fluid Injected, bbl						
Slurry 3.0	N2	Mud	Maximum Rate 7.3	Total Slurry 186.0	Mud 0.0	Spacer 30.0	N2				
Treating Pressure Summary, psi					Breakdown Fluid						
Maximum 2778	Final 529	Average 284	Bump Plug to 1050	Breakdown	Type	Volume bbl	Density lb/gal				
Avg. N2 Percent %	Designed Slurry Volume 186.0 bbl	Displacement 143.0 bbl	Mix Water Temp 90 degF	Cement Circulated to Surface?		<input checked="" type="checkbox"/>	Volume 23.0 bbl				
				Washed Thru Perfs		<input type="checkbox"/>	To ft				
Customer or Authorized Representative Jim Turner			Schlumberger Supervisor Justin Zika			Circulation Lost <input type="checkbox"/>	Job Completed <input checked="" type="checkbox"/>				
						-	-				