



Gamma Ray
Surface Parameters

LWD MEMORY LOG - RUN 1

Scale: Company: Noble Energy

1:240 Well: Gutersen D10-725

True Vertical Depth Field: Wattenberg

Depth Reference: County: WELD Country: United States

Driller's Depth State: Colorado

Status: Surface Location: 40° 15' 46.908" N Other Services:

Final Print Longitude: 104° 32' 00.852" W

API No: 05-123-48910-00 Azimuthal Gamma Ray

Job ID: 111201931 SEC: 34 TWN: 4N RGE: 64W

Permanent Datum (P.D.): Mean Sea Level Elevation: 0.00 ft Elev. KB: N/A

Log Measured From: Rig Floor Above P.D.: 4727.00 ft Elev. DF: 4727.00 ft

Dates Interval Magnetic Field Reference

From: 2022-02-12	Drilled (ft)	Logged (ft)	Azi Reference North: Grid Dip Angle: (deg)		
To: 2022-02-12	Top: 1935.00	Top: 1935.00	Total Magnetic Field Strength: (nT)		
Spud: 2022-02-03	Bottom: 17329.00	Bottom: 17316.00	Mag to Reference North Correction: (deg)		

Borehole Record

Casing Record

Hole Size (in)	From (ft)	To (ft)	Size (in)	Weight (lb/ft)	From (ft)	To (ft)
13.500	30.00	1935.00	9.625	36.00	30.00	1925.00
8.500	1935.00	17329.00				

Mud Record

Deviation Record

Type	From (ft)	To (ft)	Hole Size (in)	Interval (ft)	Inc Az (Start)	Inc Az (End)
Oil Based Mud	1935.00	17329.16	8.500	15394.00	0.33 203.46	90.57 180.11

Acquisition System Software Version

Other

Cadence	RT 6.3	Rig: H&P 517
Plot Studio	6.3.9444.1	Contractor: Helmerich & Payne Drilling Co
		District: RMA Unit: D&E

(C) 2022 Baker Hughes Company - All rights reserved. Baker Hughes and its affiliates provides this information on an "as is" basis for general information purposes and believes it to be accurate as of the date of publication. Baker Hughes does not make any representation as to the accuracy or completeness of the information and makes no warranties of any kind, specific, implied or oral, to the fullest extent permissible by law, including those of merchantability and fitness for a particular purpose or use. Baker Hughes hereby disclaims any and all liability for any direct, indirect, consequential or special damages, claims for lost profits, or third party claims arising from the use of the information, whether a claim is asserted in contract, tort, or otherwise. The Baker Hughes logo is a trademark of Baker Hughes Company.

Log Run Summary

Run No	Bit Run No.	Bit Size (in)	Bit Type	Bit Gauge Length (in)	Assembly Type	Logged Interval		Bit Depth Interval		Date / Time		Circ. Hours (h)
						Top (ft)	Bottom (ft)	From (ft)	To (ft)	Start Logging	End Logging	
1	1	8.500	PDC	3.00	AutoTrak Curve	119.03	17316.53	132.00	17329.50	2022-02-09 22:25	2022-02-12 07:15	48.70

Crew

Name	Arrive	Depart	Name	Arrive	Depart	Name	Arrive	Depart
------	--------	--------	------	--------	--------	------	--------	--------

	Wellsite	Wellsite		Wellsite	Wellsite		Wellsite	Wellsite
Zhilin Zhang	2022-02-09	2022-02-12						

Mud Properties Record

Date / Time	Run No.	Depth (ft)	Mud Type	Density (ppg)	Viscosity (cP)	pH	Fluid Loss (cm3)	Oil / Water	Source	Total Chlorides (ppm)	K+ (%)
2022-02-10 04:00	1	3519.00	Oil Based Mud	9.4	14	N/A	16.4	70/19	Active Pit	31000	0.00
2022-02-10 16:00	1	6712.00	Oil Based Mud	9.8	14	N/A	19.5	68.2/19.6	Active Pit	27000	0.00
2022-02-11 04:00	1	10401.00	Oil Based Mud	9.8	14	N/A	20.2	68/19.2	Active Pit	28500	0.00
2022-02-12 04:00	1	16845.00	Oil Based Mud	10.5	15	N/A	21.0	66.2/17.6	Active Pit	25000	0.00

Equipment and Service Data

Run No.	Tool	Serial Number	Measurement	Sensor Offset (ft)	Bit Offset (ft)	Max O.D. (in)	Min I.D. (in)
1	AutoTrak Curve Steering Unit	14899305	Near Bit Inclination	5.93	6.80	6.750	4.330
1	AutoTrak Curve Steering Unit	14899305	Near Bit VSS	5.93	6.80	6.750	4.330
1	AutoTrak Curve MWD	14146739	Gamma (single)	2.75	12.97	6.750	3.250
1	AutoTrak Curve MWD	14146739	Directional (mag)	12.27	22.49	6.750	3.250

Service and Tool Mnemonics

Mnemonic	Name	Description
ATC SU	AutoTrak Curve SU	Auto Trak Curve Steering Unit
ATC MWD	AutoTrak Curve MWD	Auto Trak Curve MWD
ATC LCPM	AutoTrak Curve LCPM	Auto Trak Curve LCPM

Comments

1	Baker Hughes Company runs 1 utilized 6 ¾ inch NaviGamma services (Gamma Ray and Directional) behind an 8 ½ inch PDC bit and rotary steerable assembly from 1935 to 17329 feet MD (1935 to 6637 feet TVD).
2	Depth measurements were obtained from a depth control system not supplied or operated by Baker Hughes. Due to a lack of control by Baker Hughes logging engineers, depth calibrations and measurements could not be independently verified and the unverified depths as supplied to Baker Hughes are being used to present logging data.
3	The Gamma Ray Apparent (GRAM) data is presented 0 to 300 API, per the customer's request.

Remarks

Number	Depth (ft)	Hole Section (in)	Run No.	Remark
1	2063.00	8.500	1	Various intervals from 2063 to 14954 feet MD (2063 to 6652 feet TVD) were not logged due to a high ROP while downlinking.

Curve Mnemonics

Presented Curves	Description	Units
ROPA	Depth Averaged ROP 3 ft Average	ft/h
WOBA	Weight On Bit, Average 1 ft Average	klb
GRAM	Gamma Ray - Apparent - Memory 0.5 ft Average	API
TCDM	Directional Real-Time Survey Temperature	degF

Gamma Ray - Apparent 0.5 ft Average GRAM 0300	TVD 1:240 feet	Depth Averaged ROP 3 ft Average ROPA 10000	Weight On Bit, Average 1 ft Average WOBA 050
API		ft/h	klb
			Downhole Temperature TCDM 0300
			degF

1900

9 5/8" Casing

2000

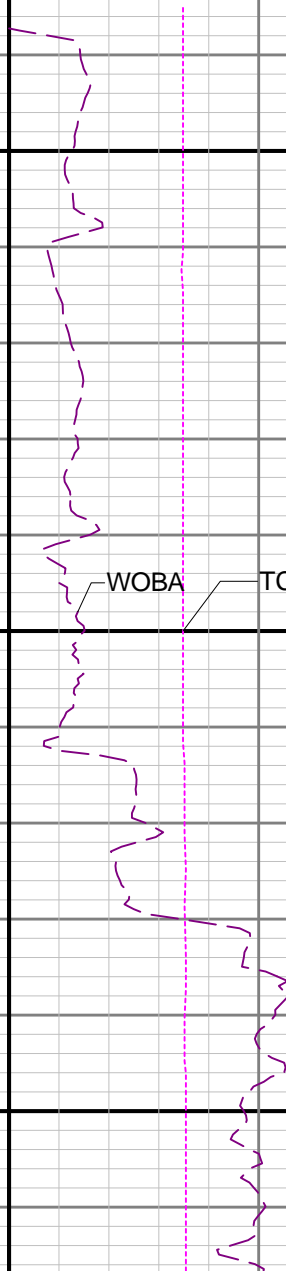
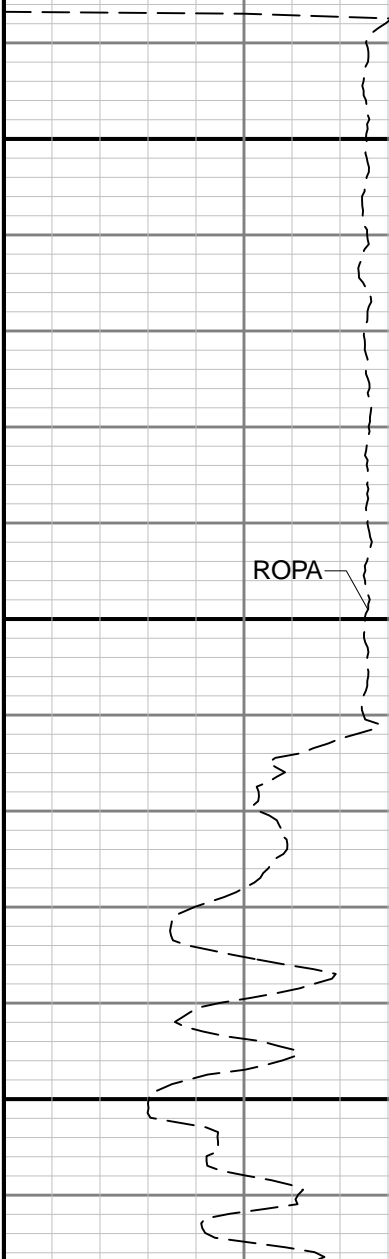
GRAM

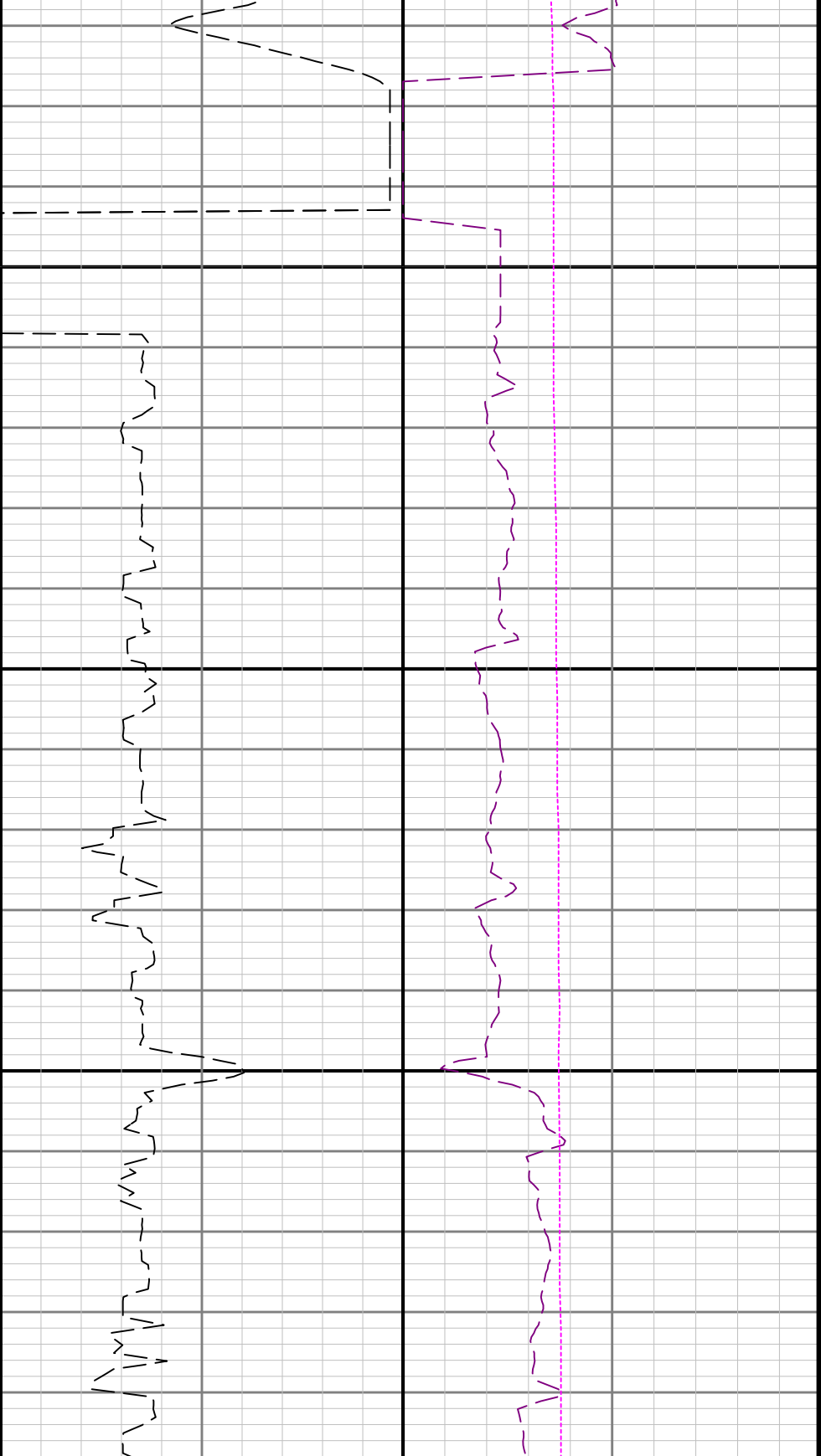
ROPA

WOBA

TCDM

See Remark 1

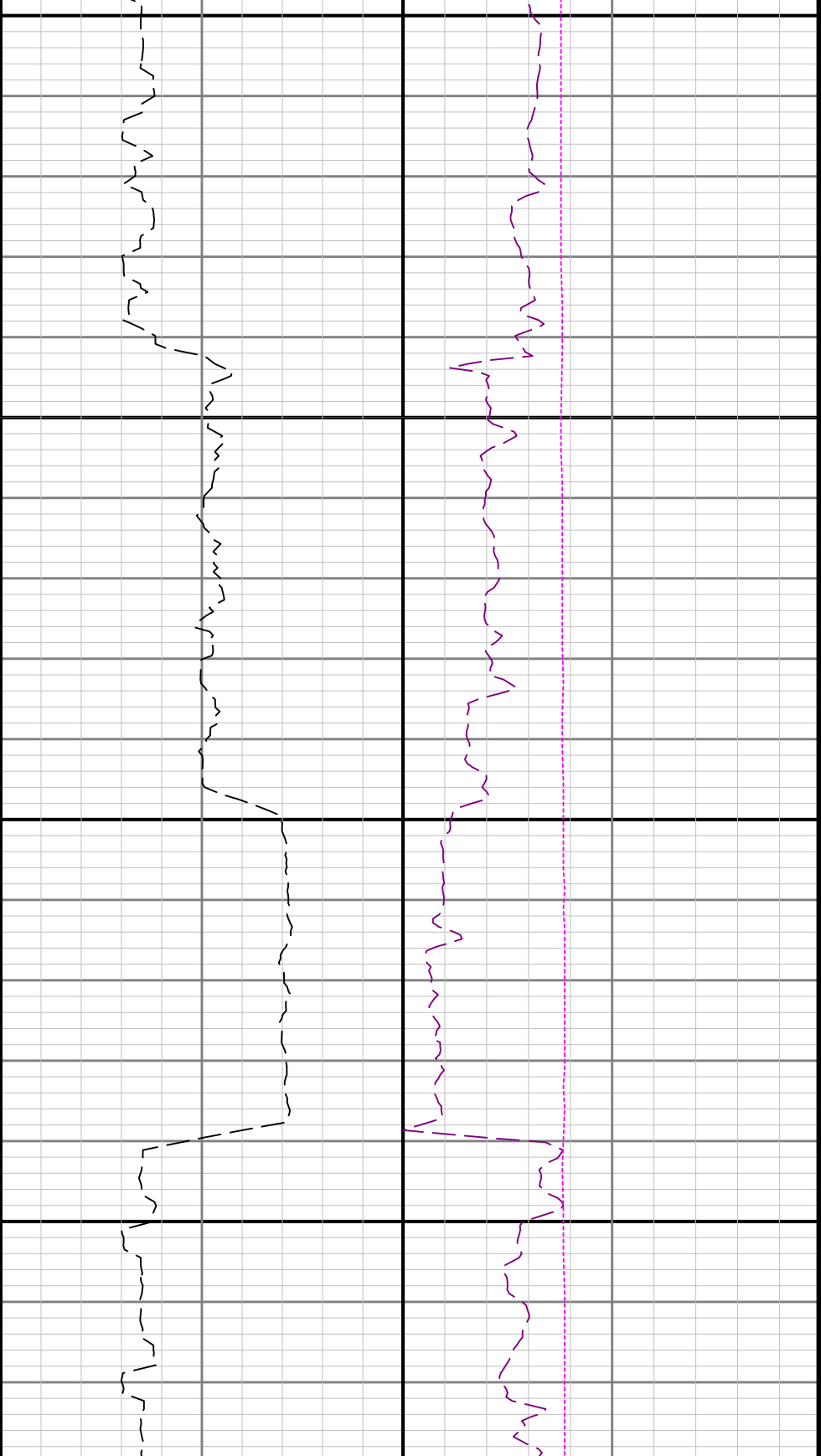




2100

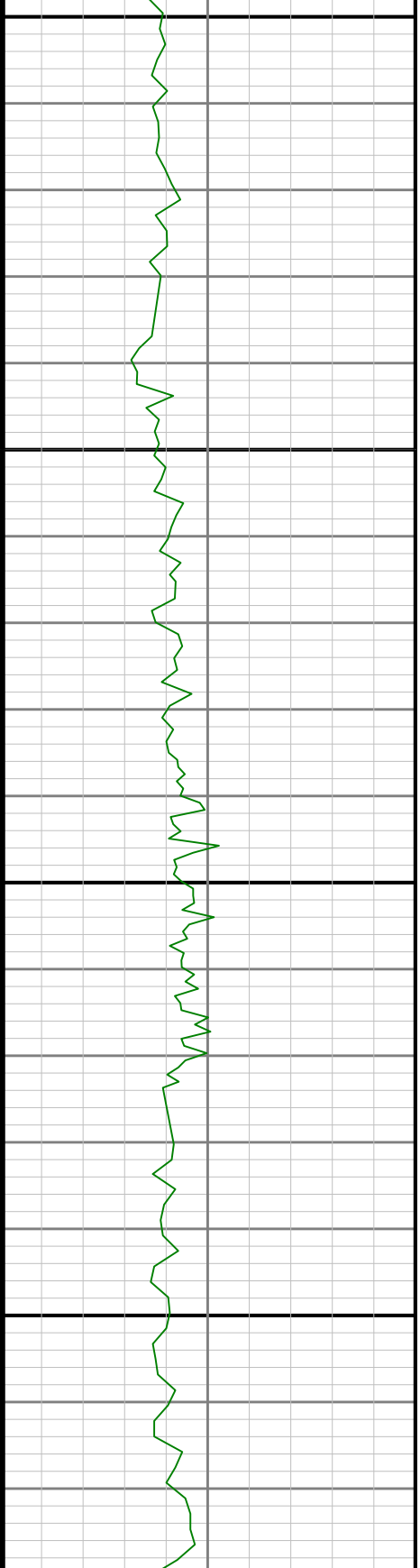
2200

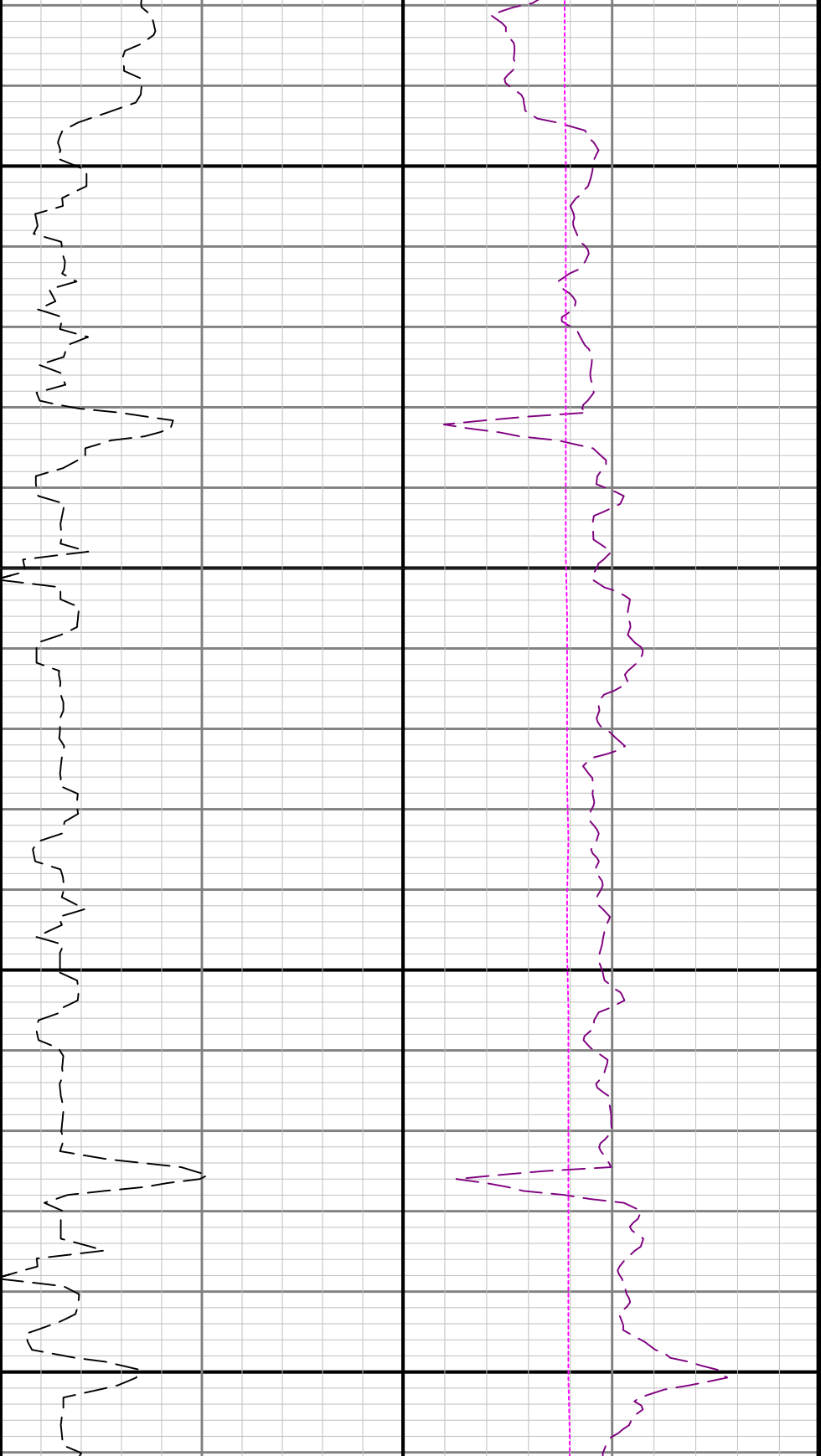




2300

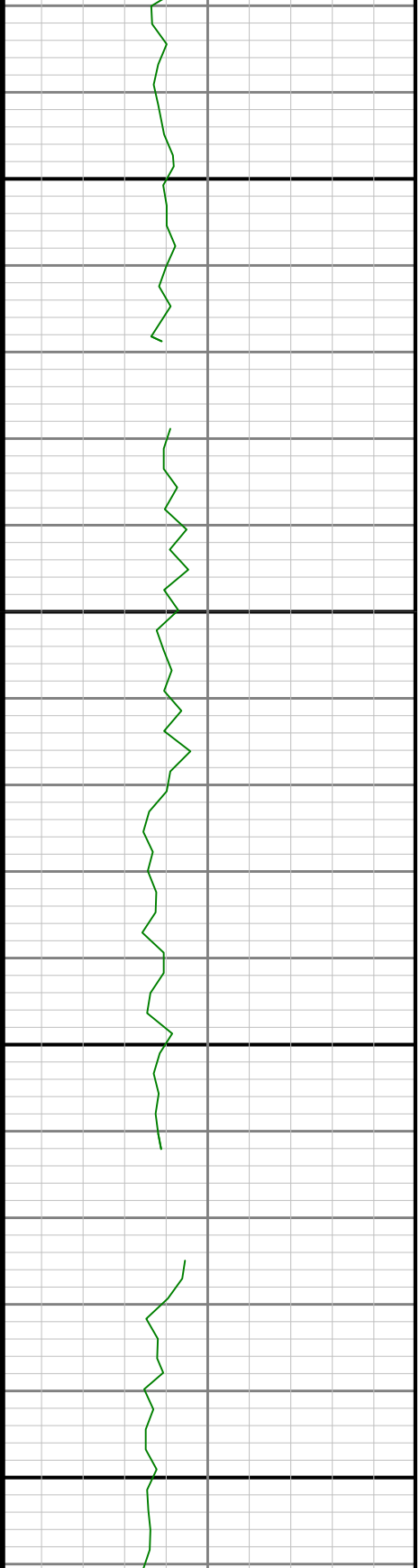
2400

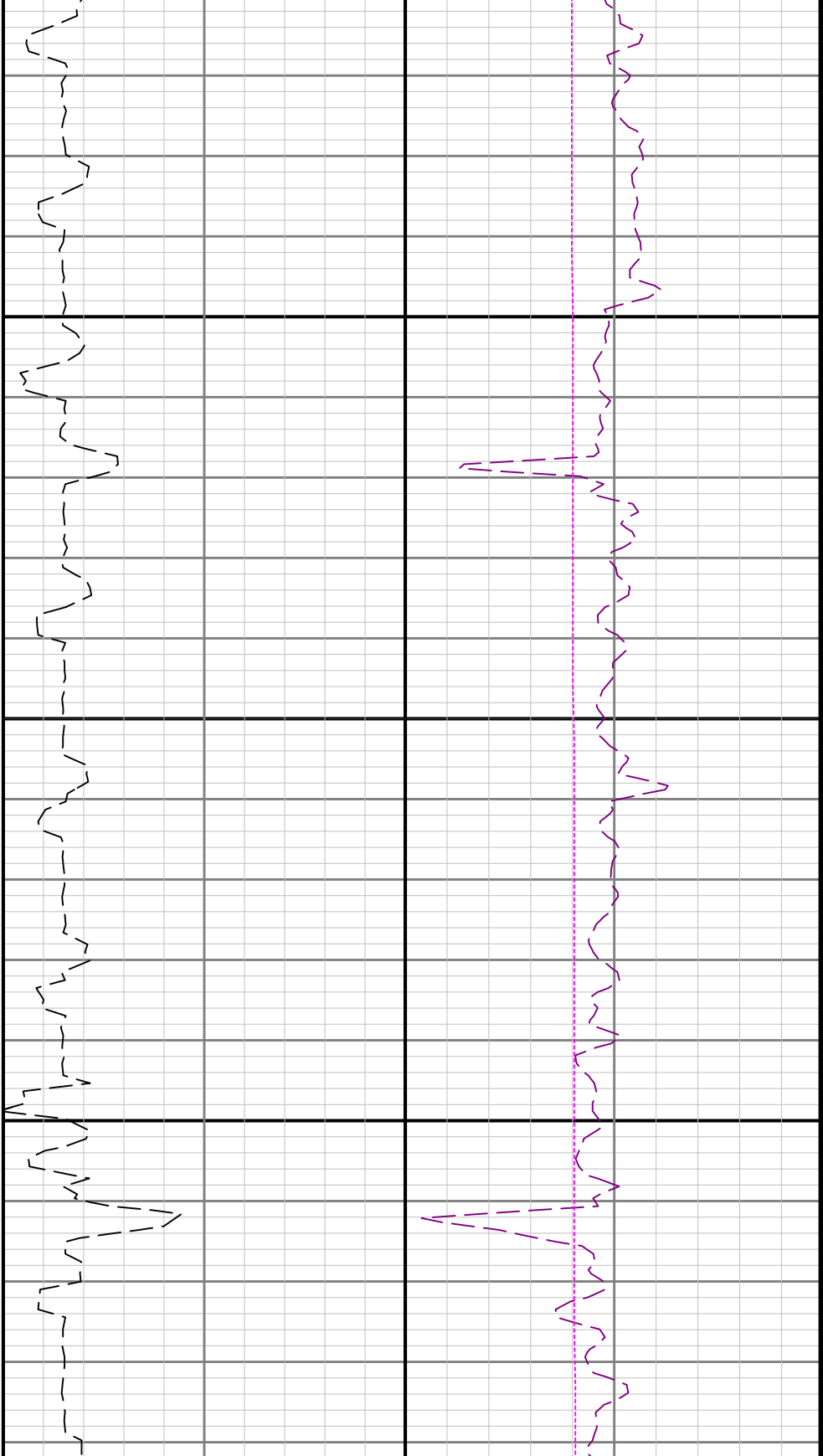




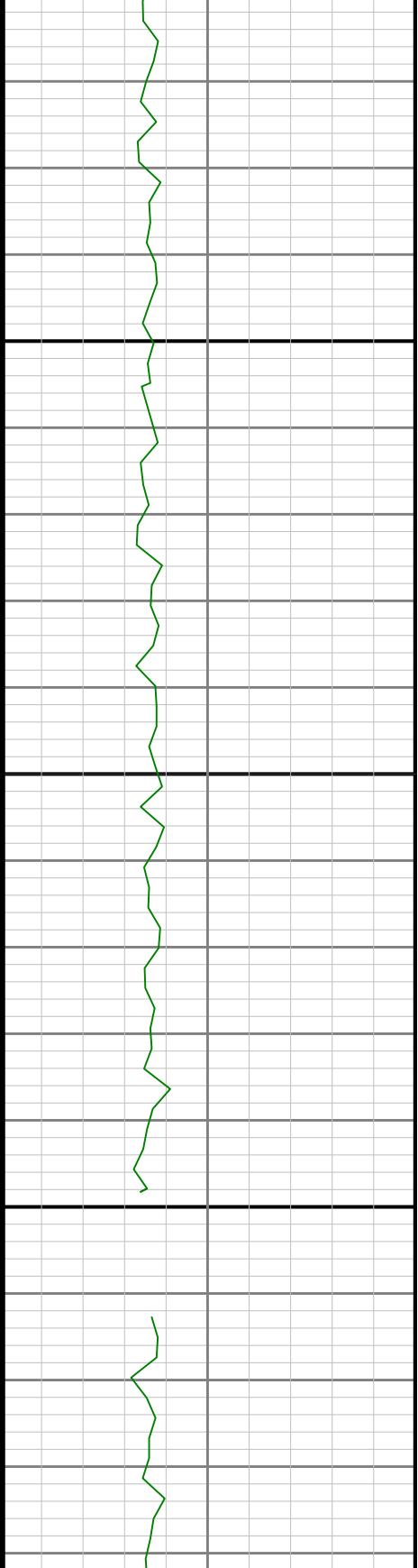
2500

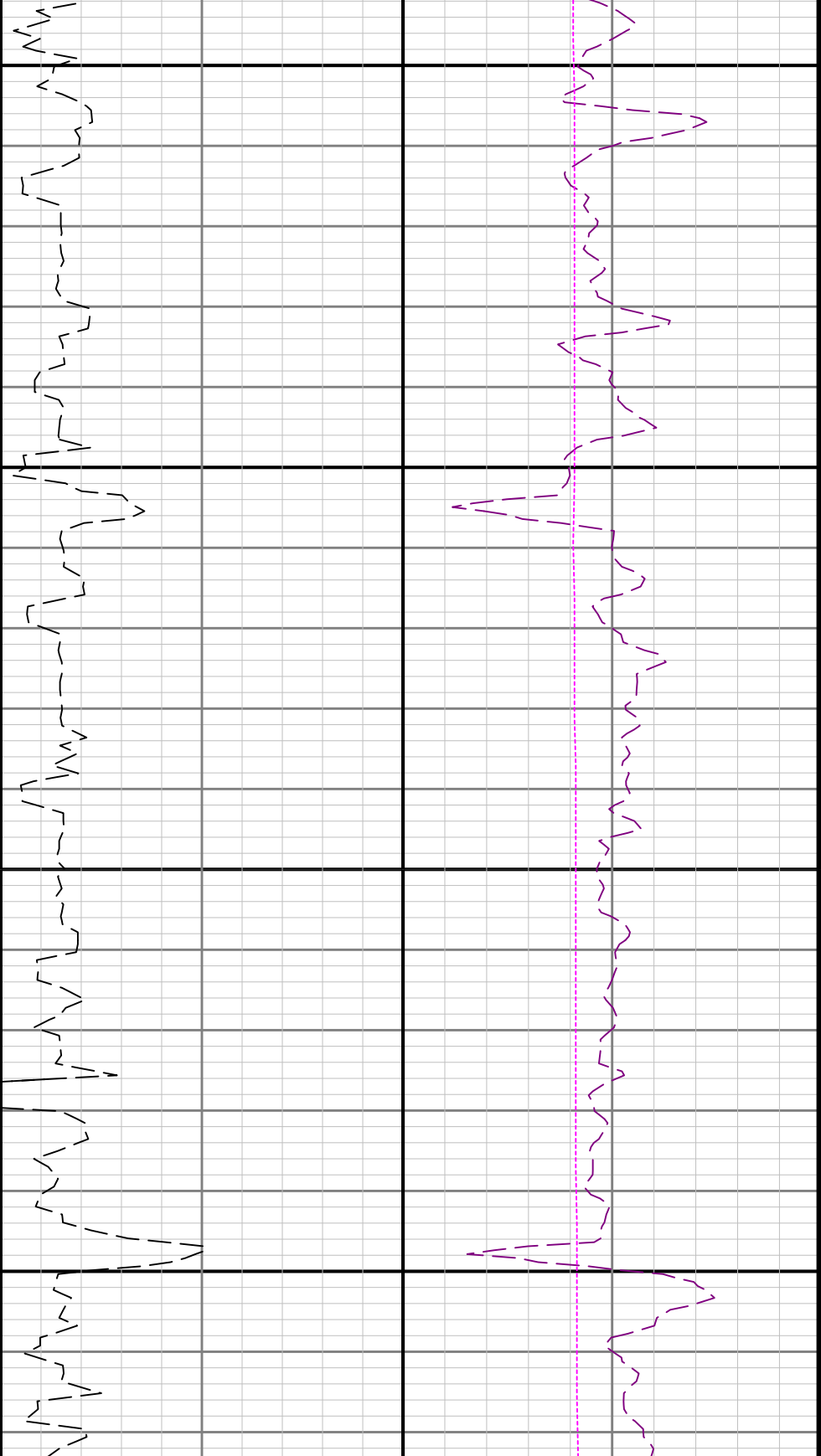
2600





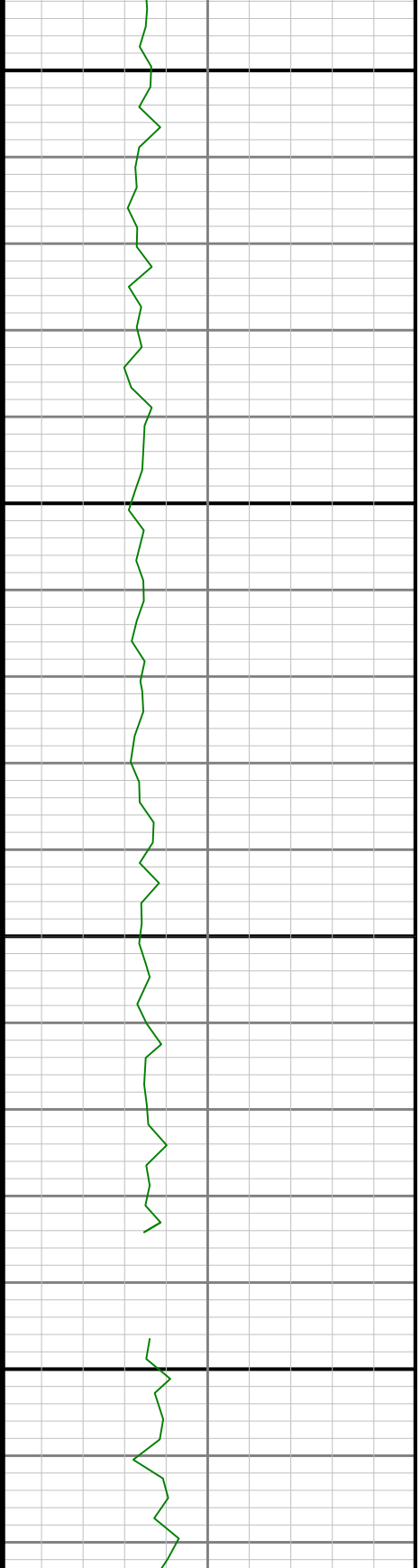
2700

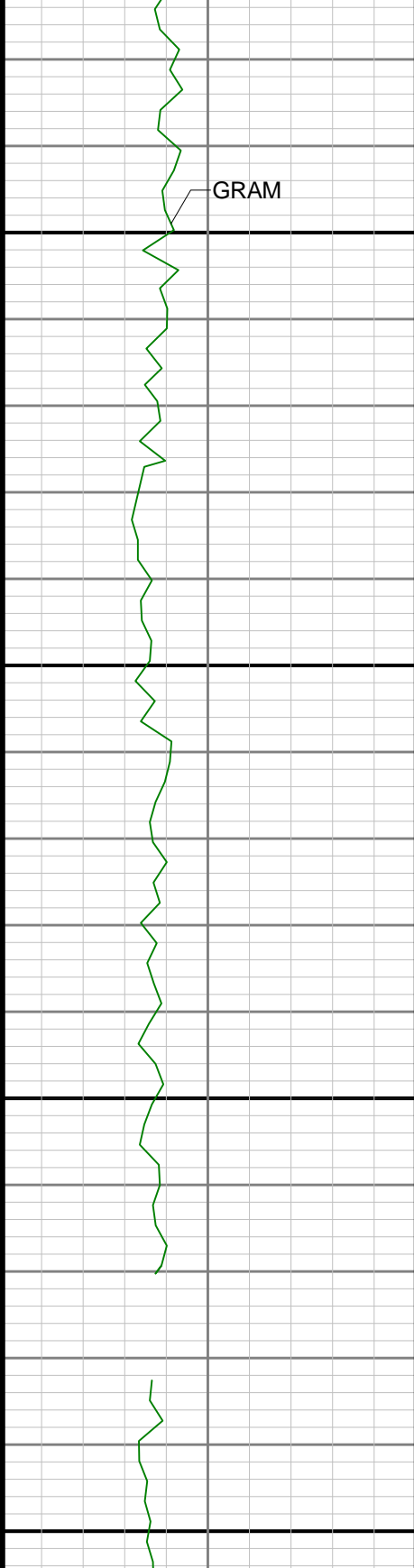




2800

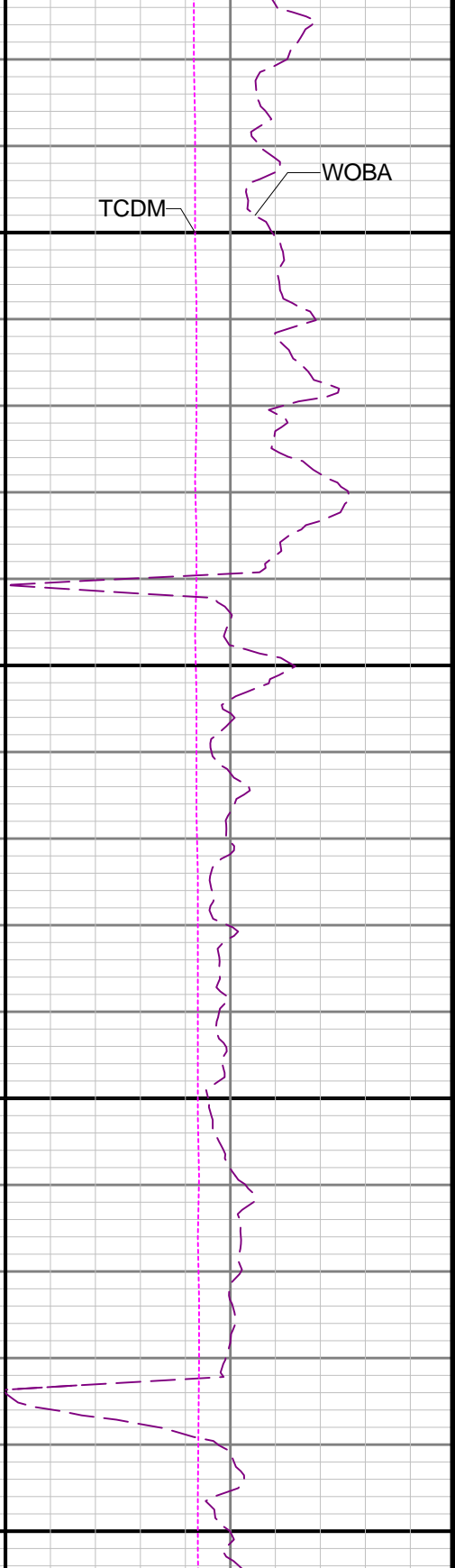
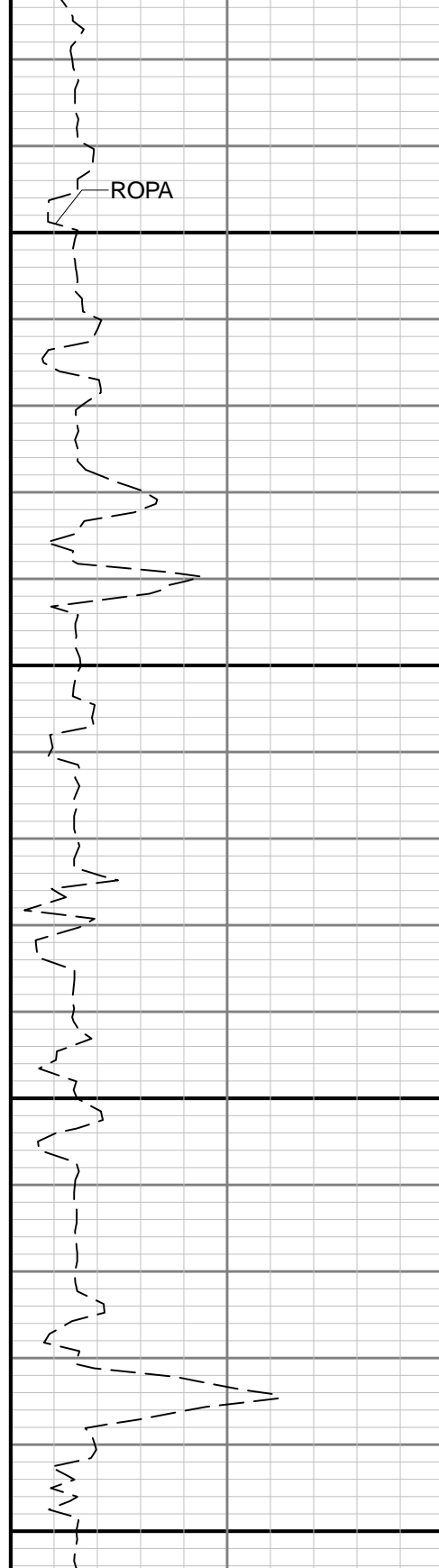
2900



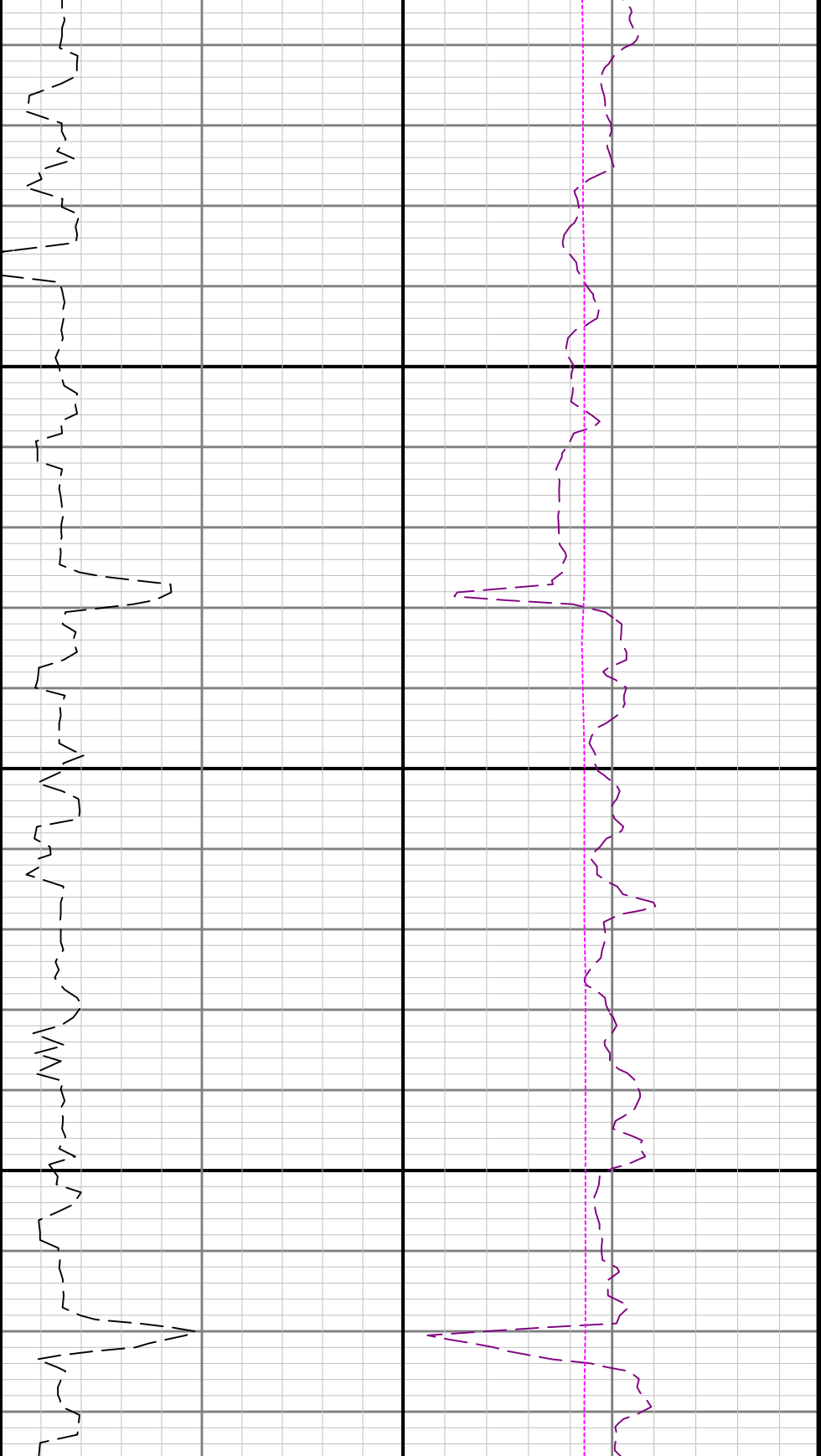


3000

3100

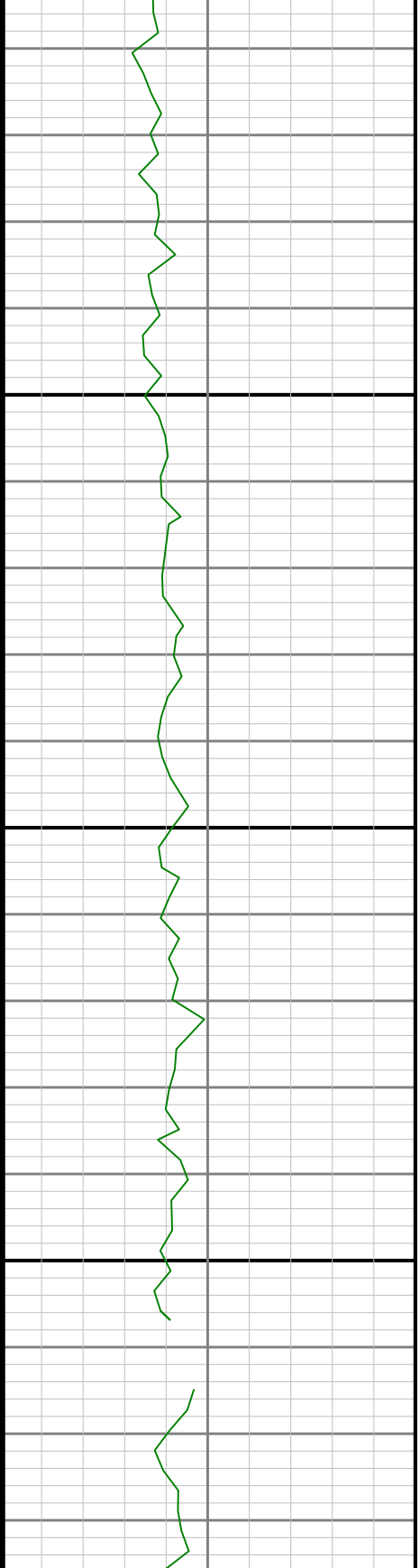


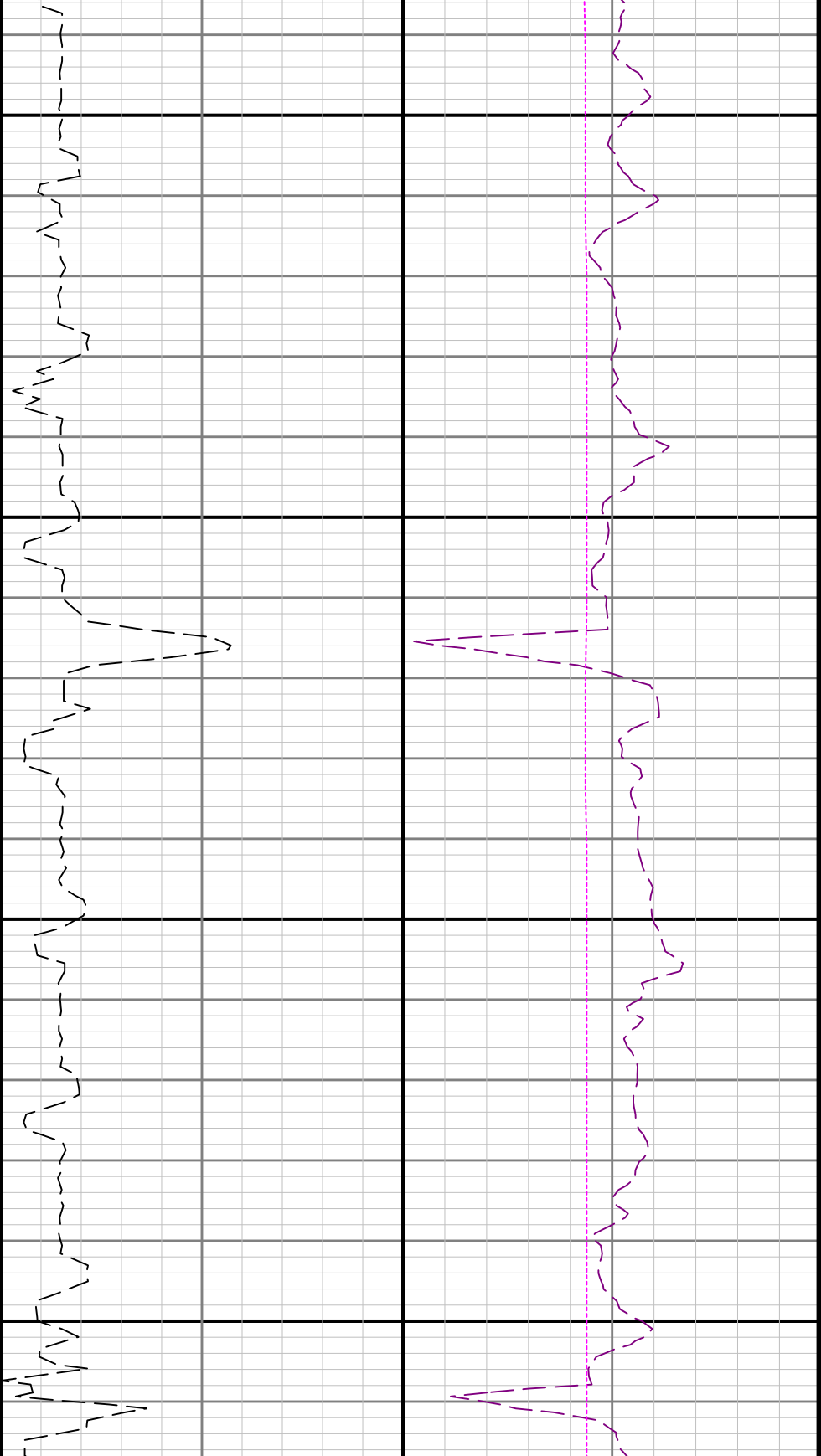
TCDM



3200

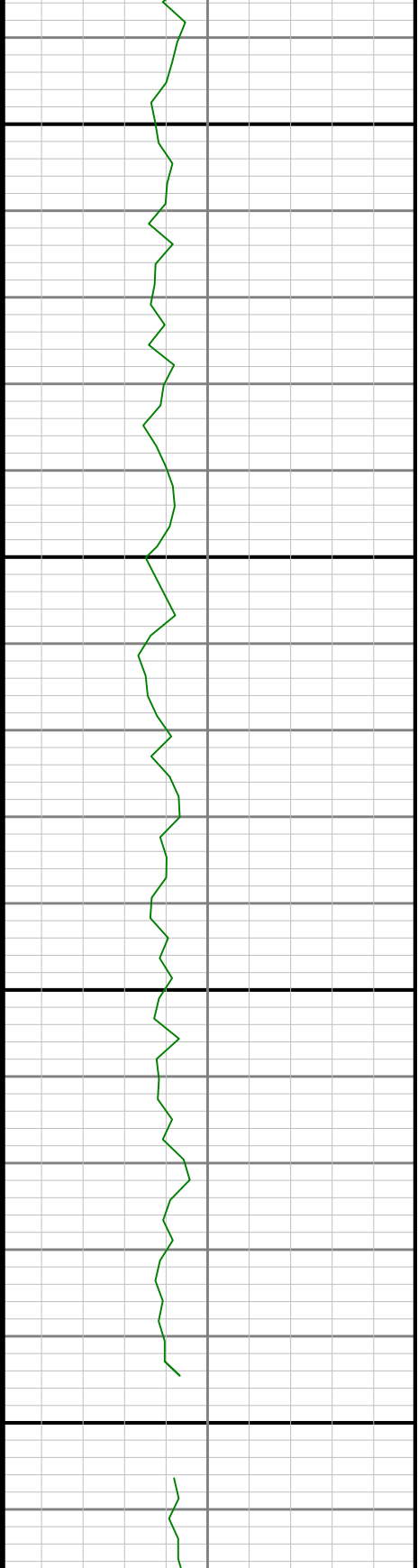
3300

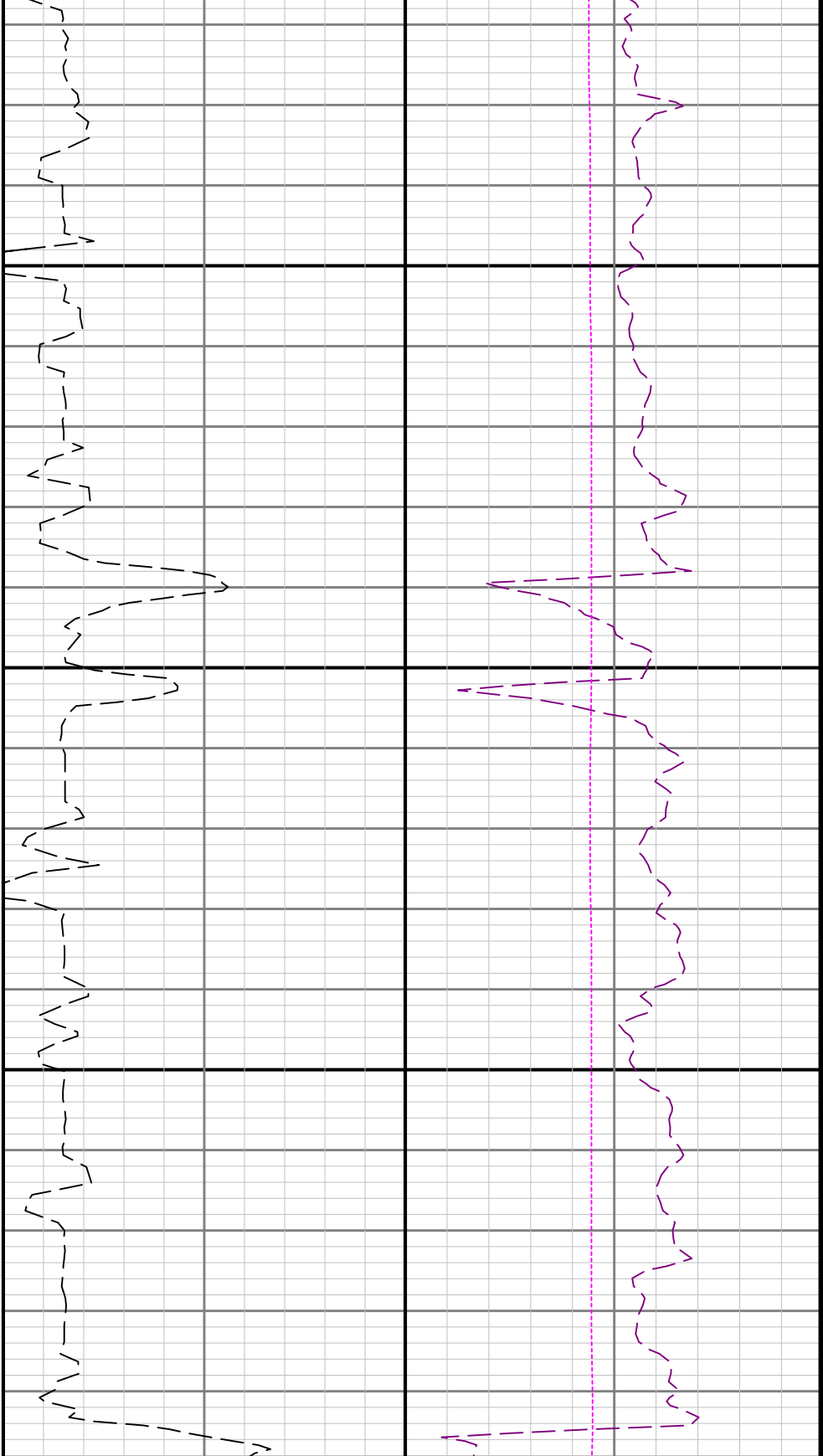




3400

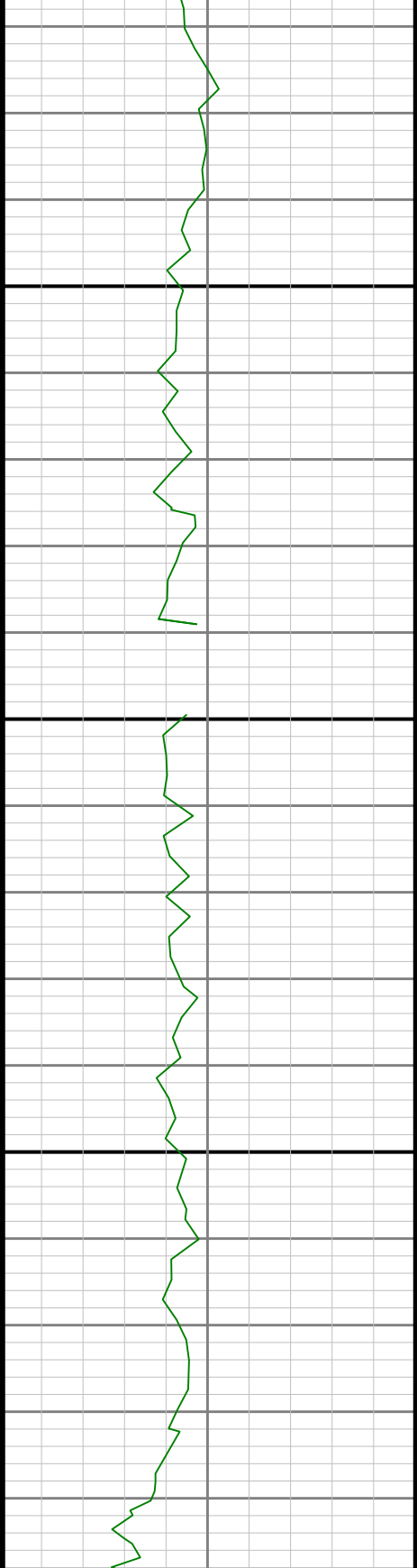
3500

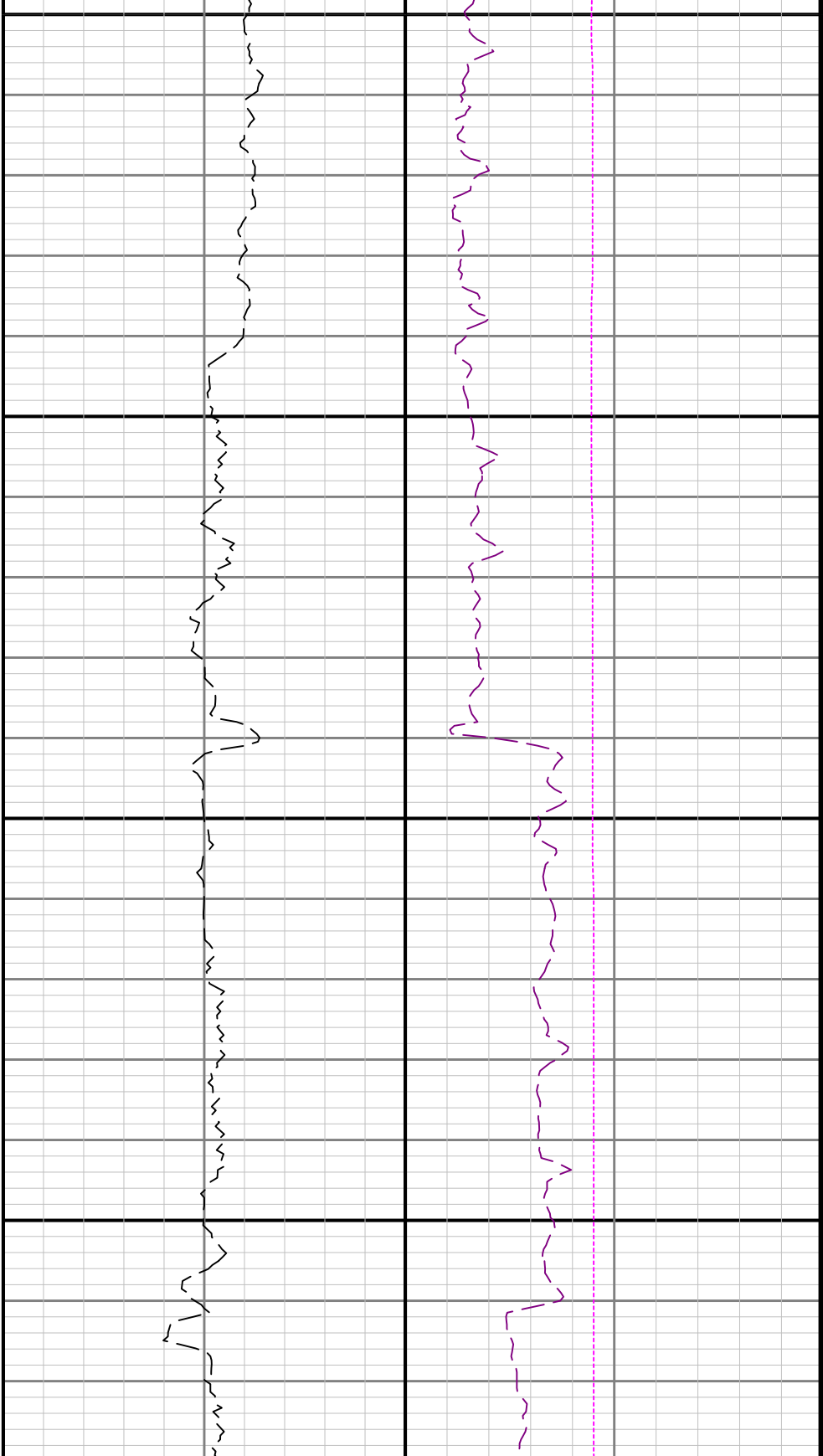




3600

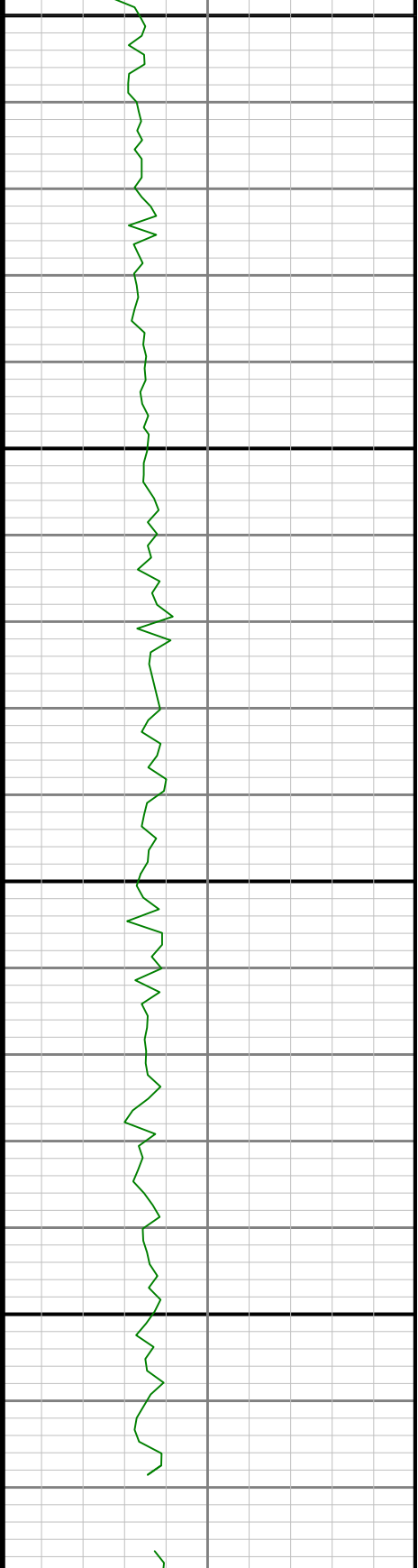
3

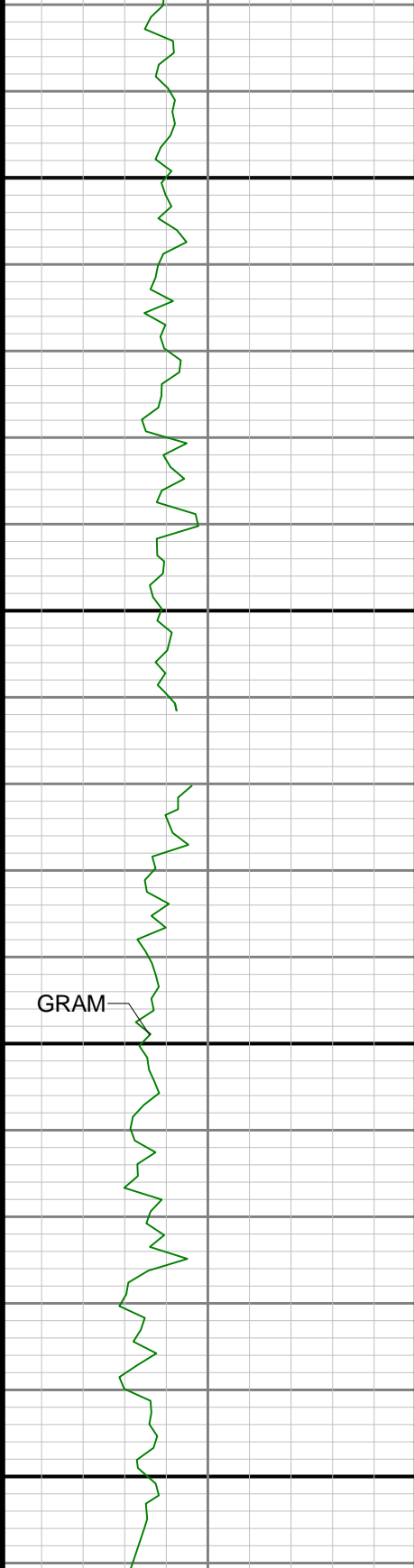




700

3800

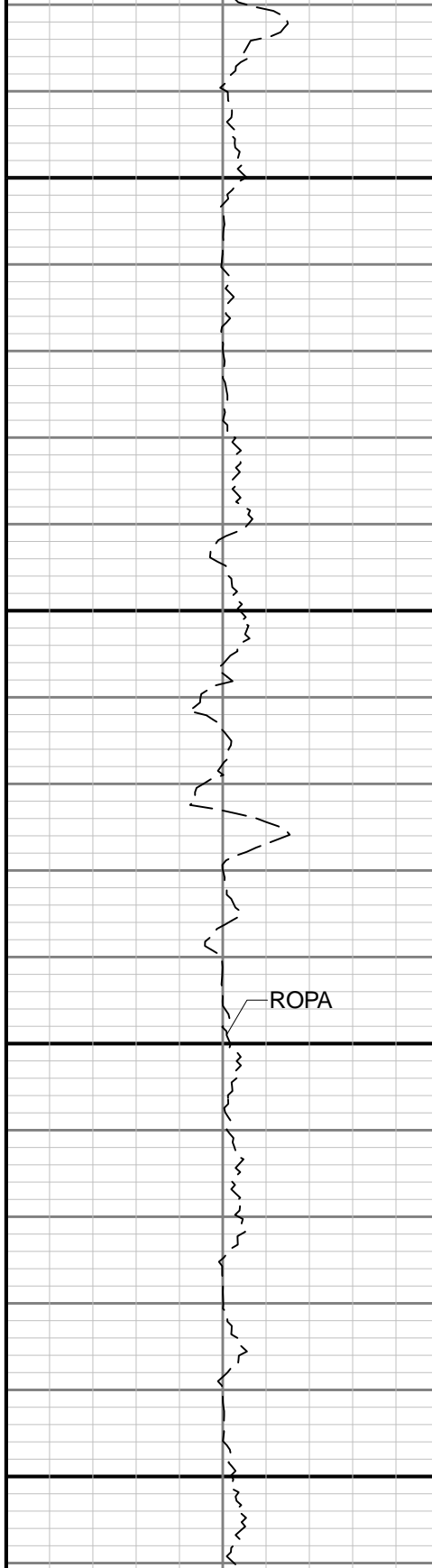




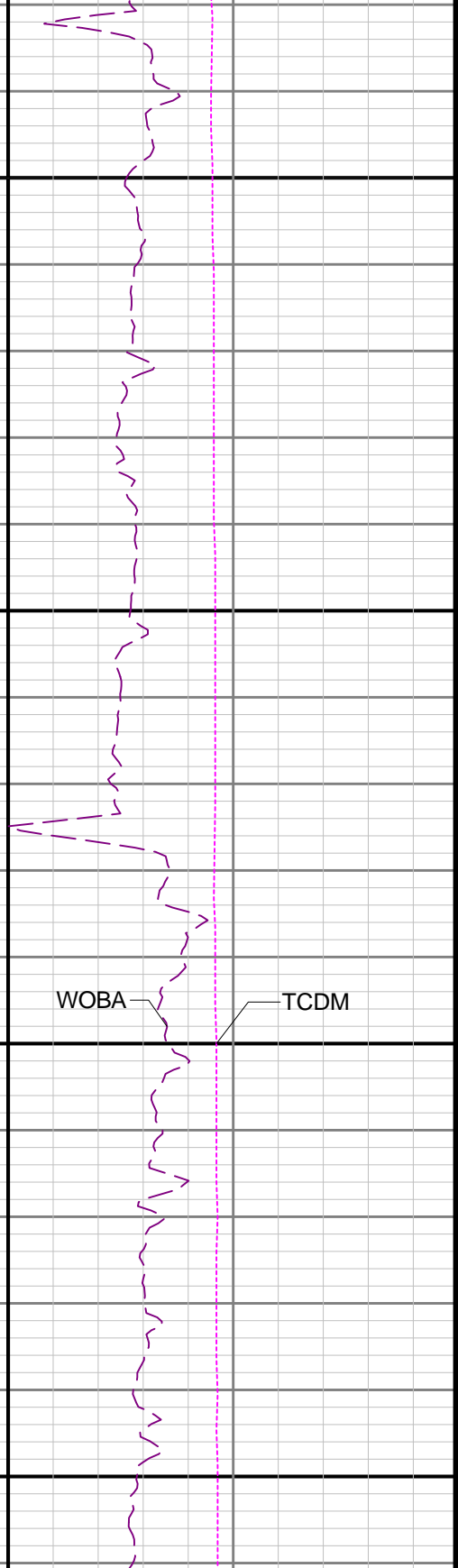
GRAM

3900

4000

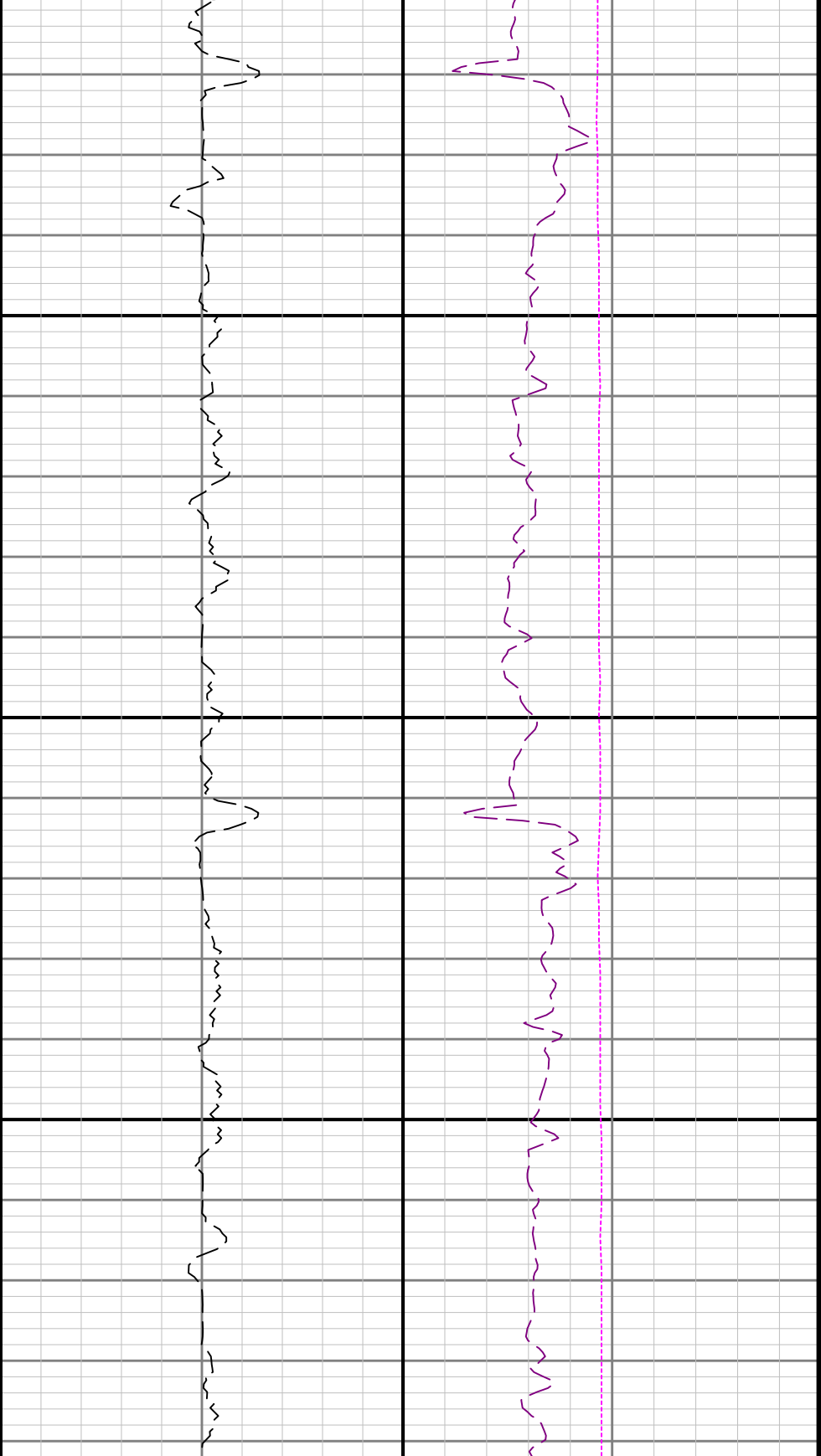


ROPA



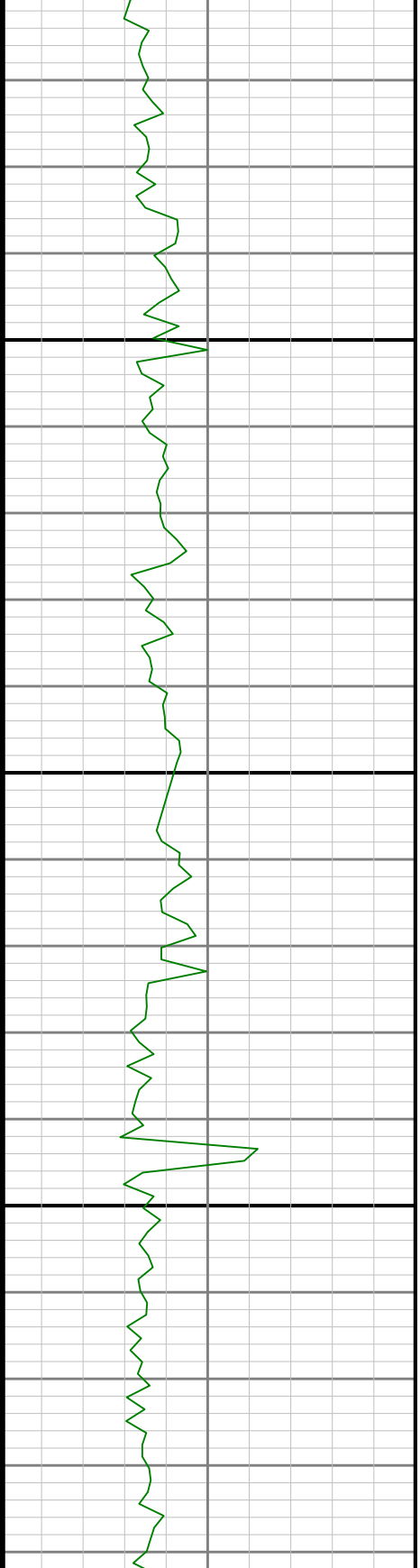
WOBA

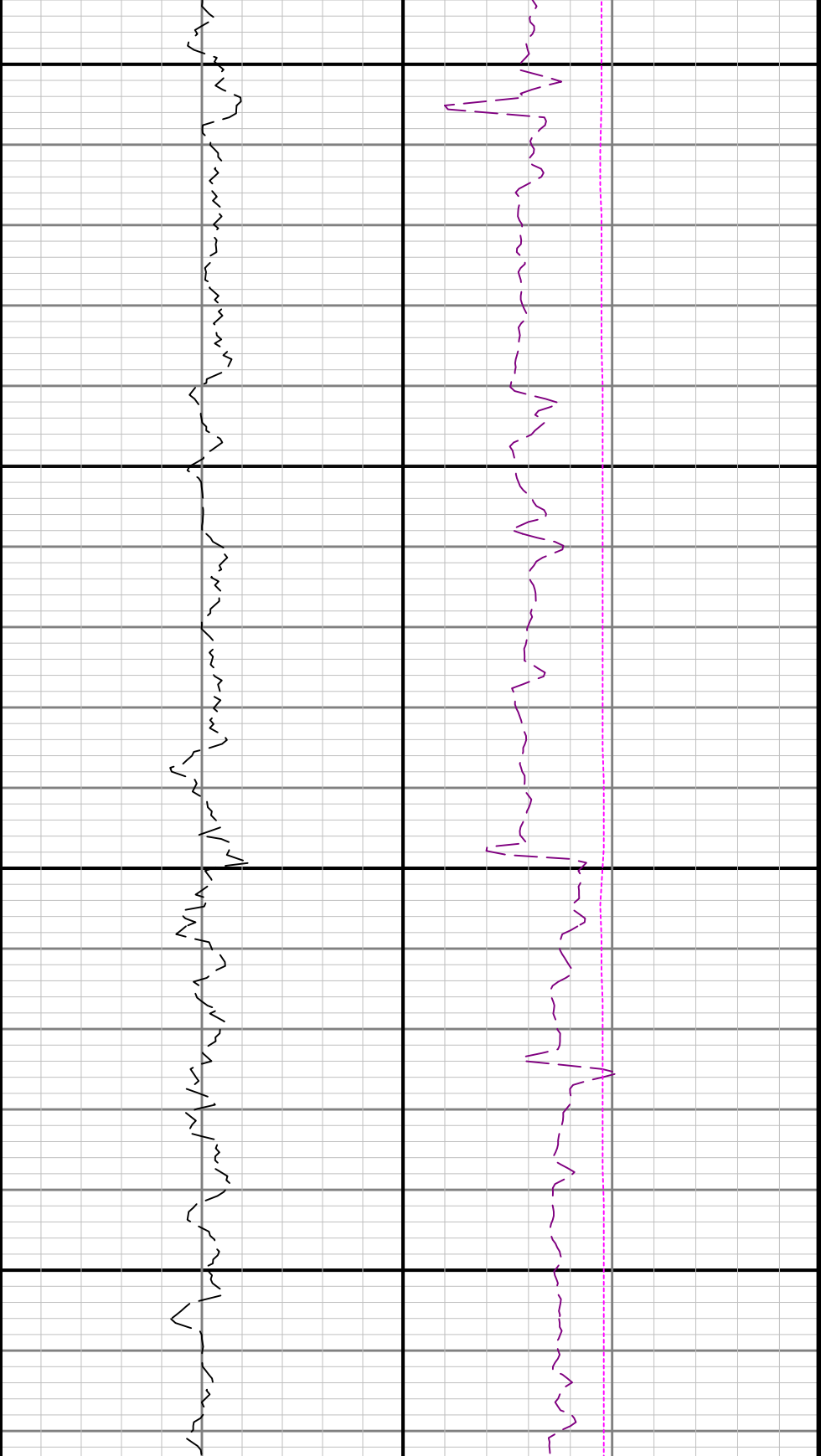
TCDM



4100

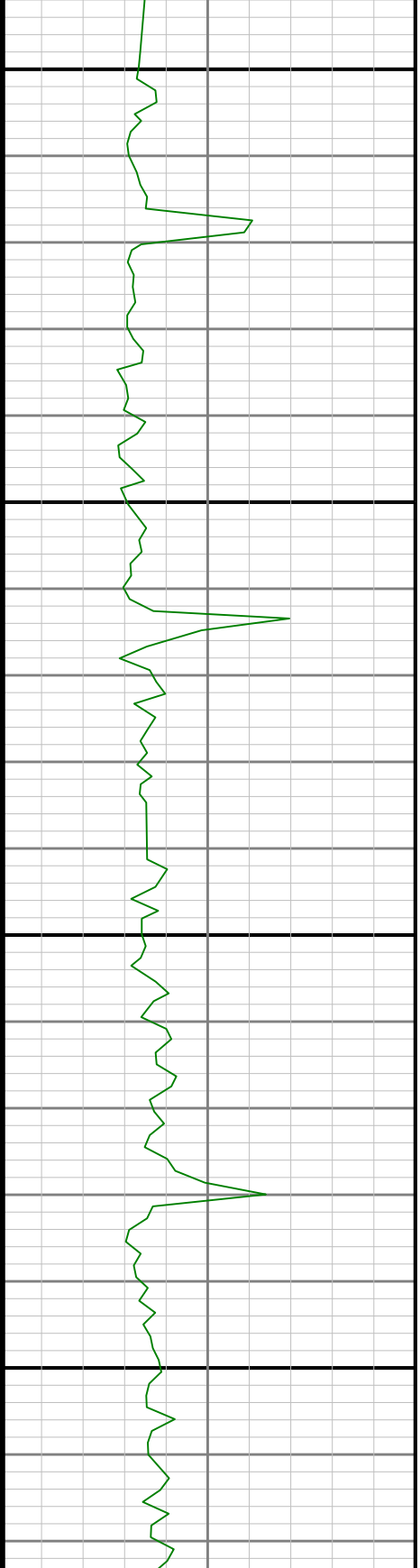
4200

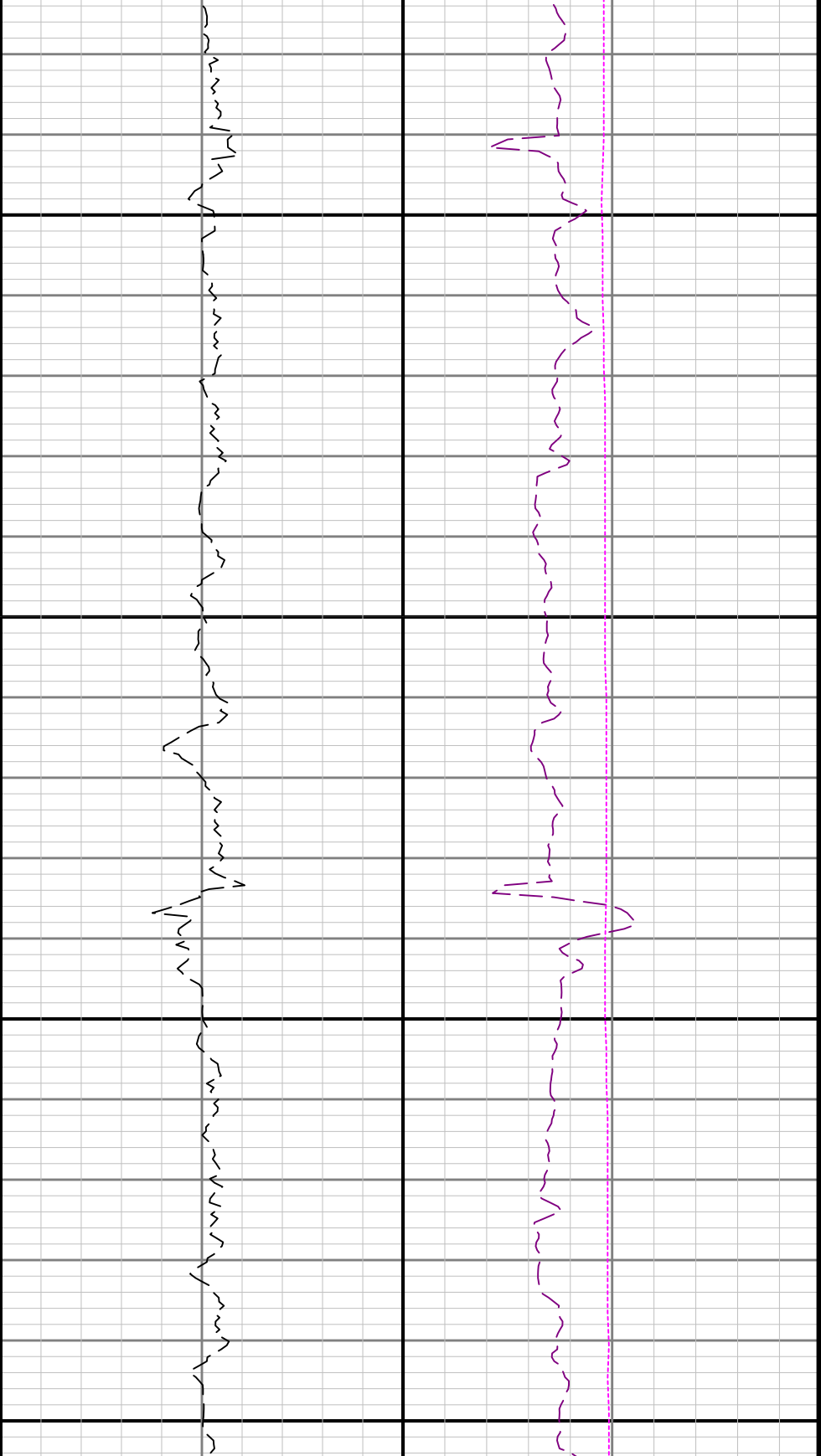




4300

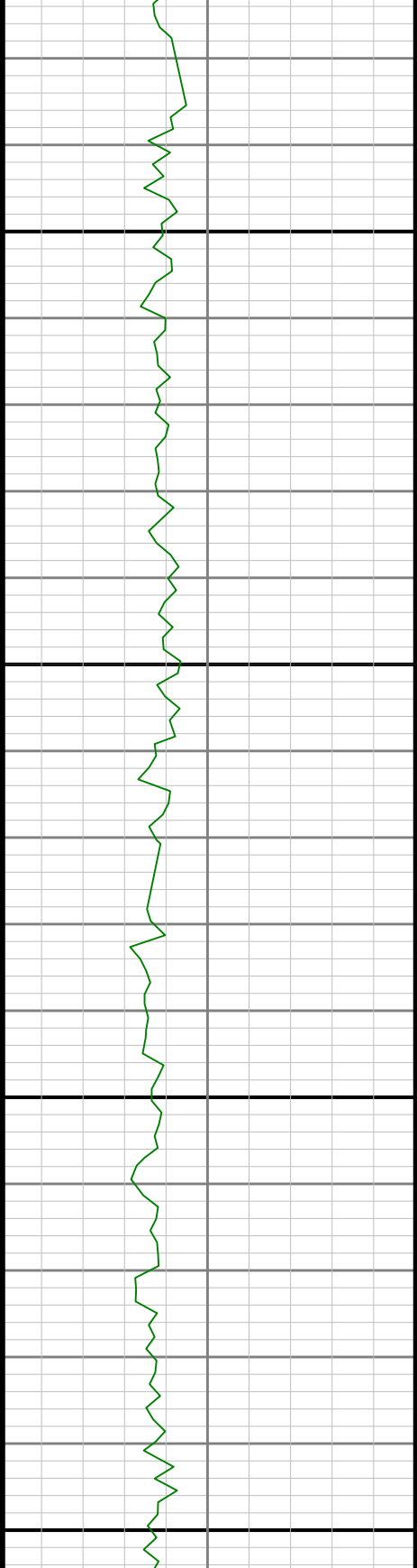
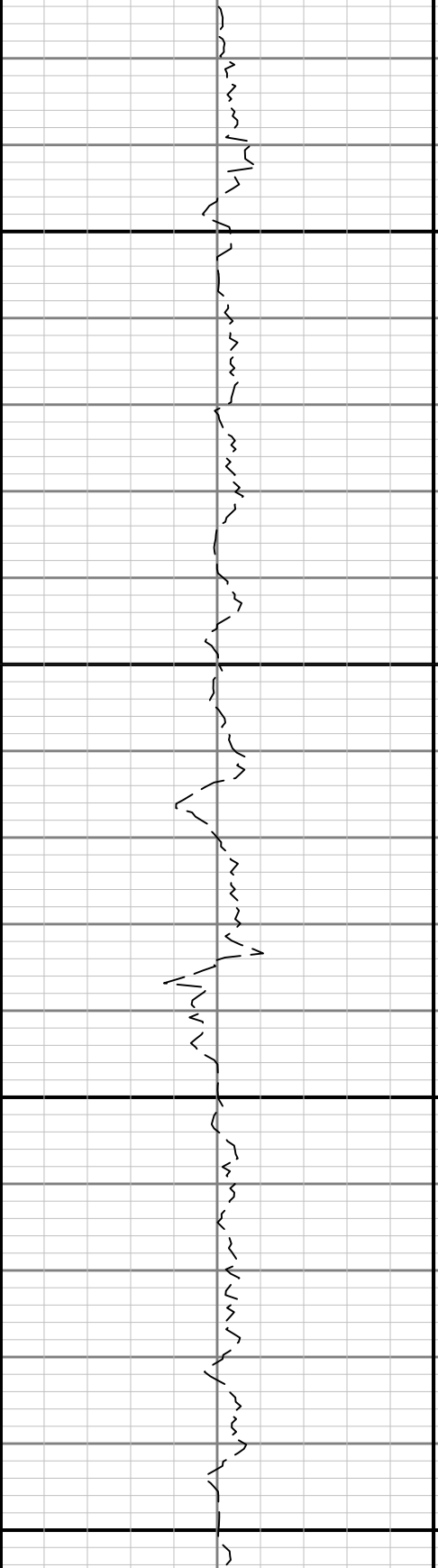
4400

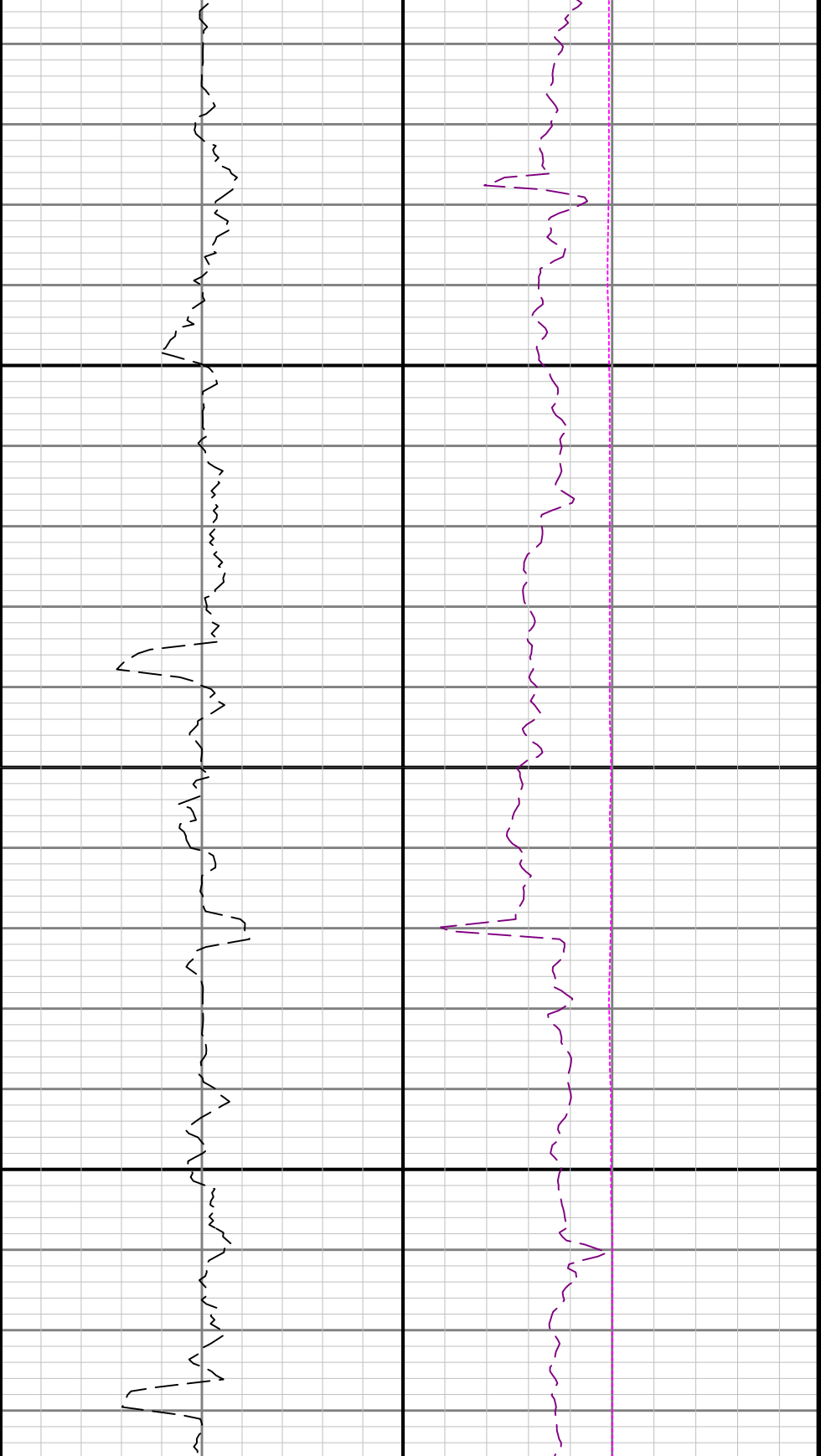




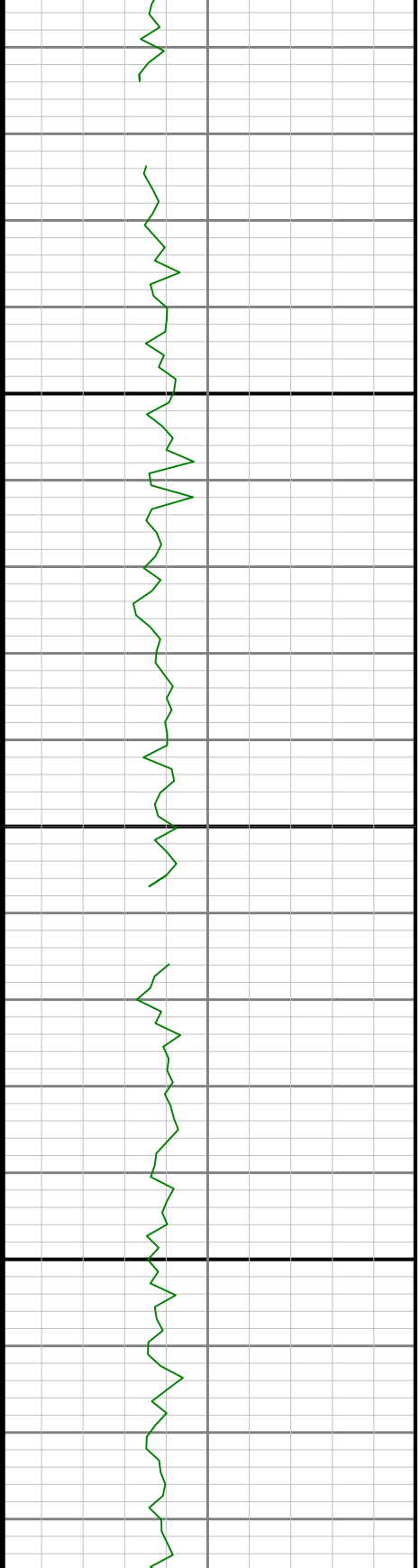
4500

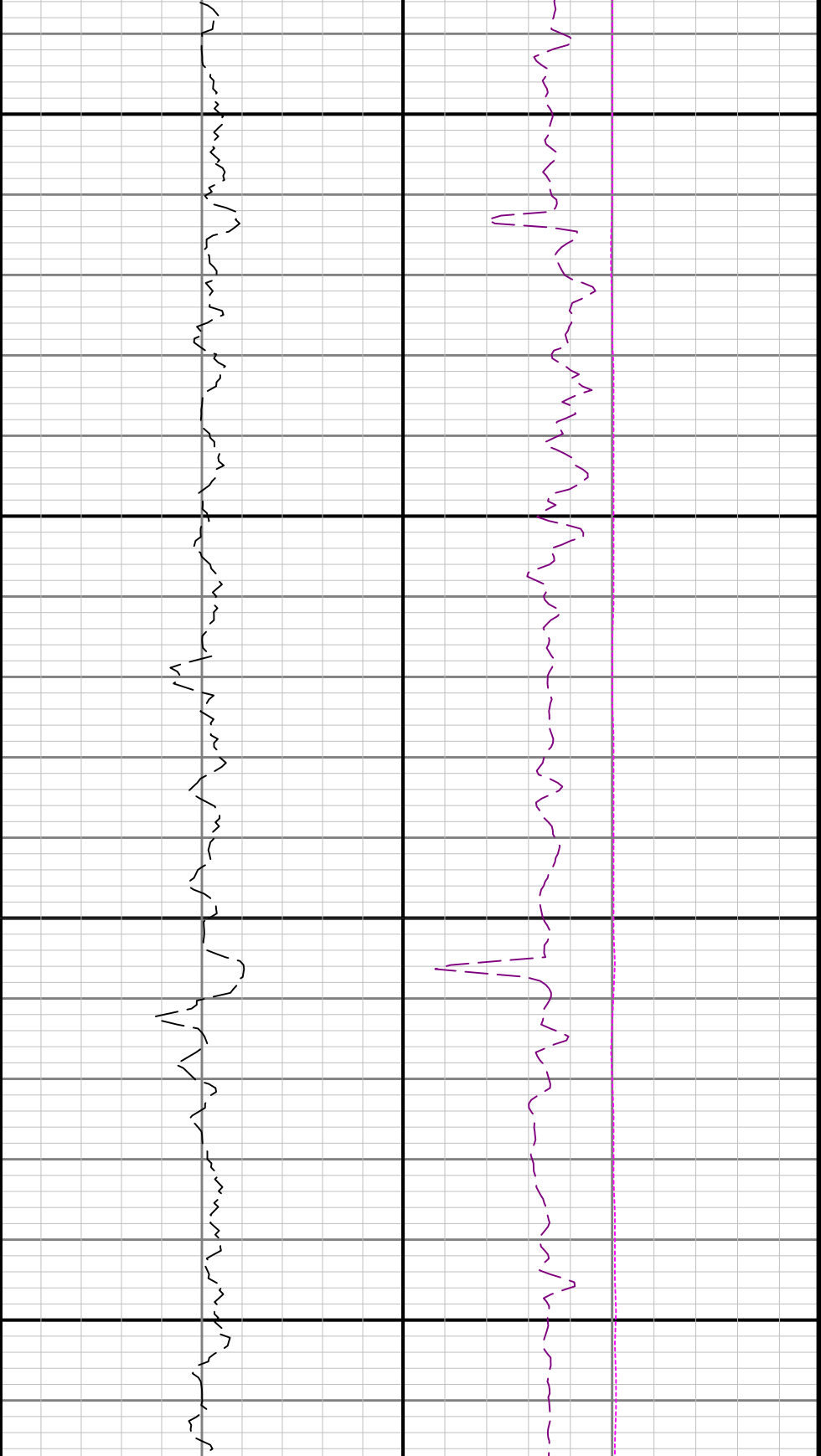
4600





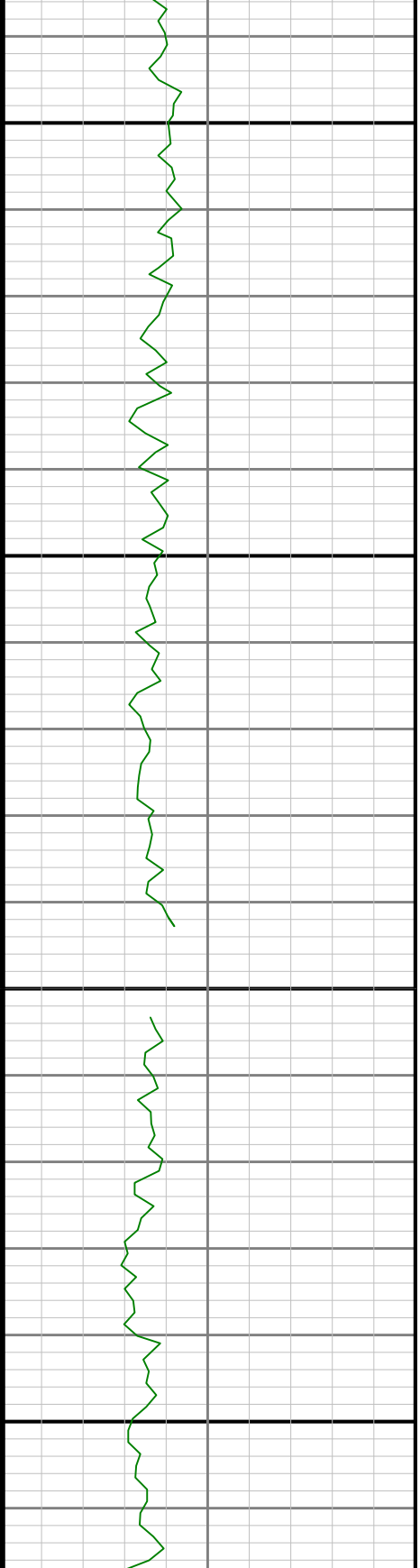
4700

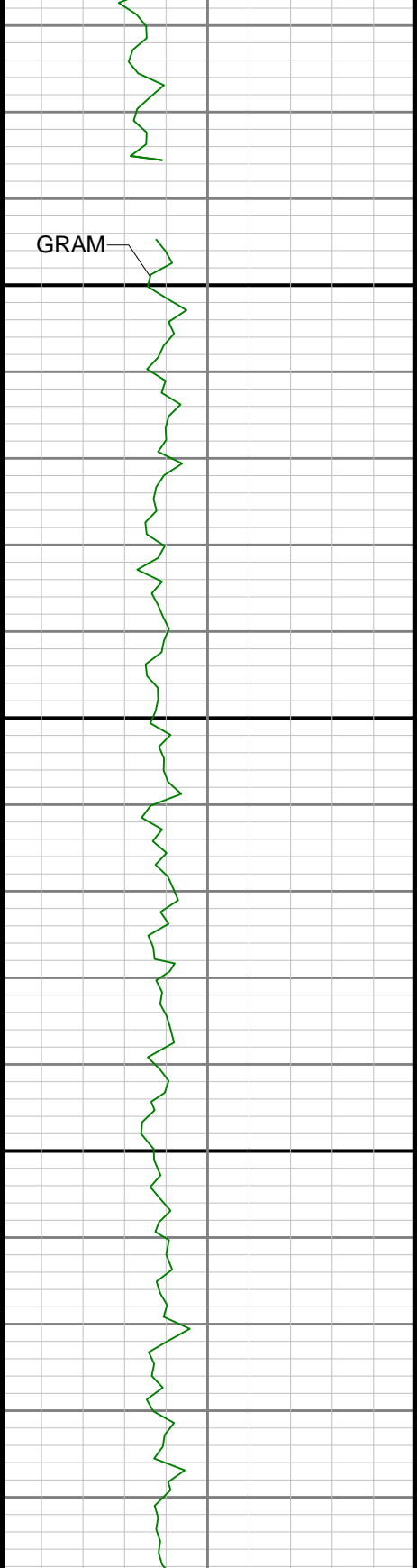




4800

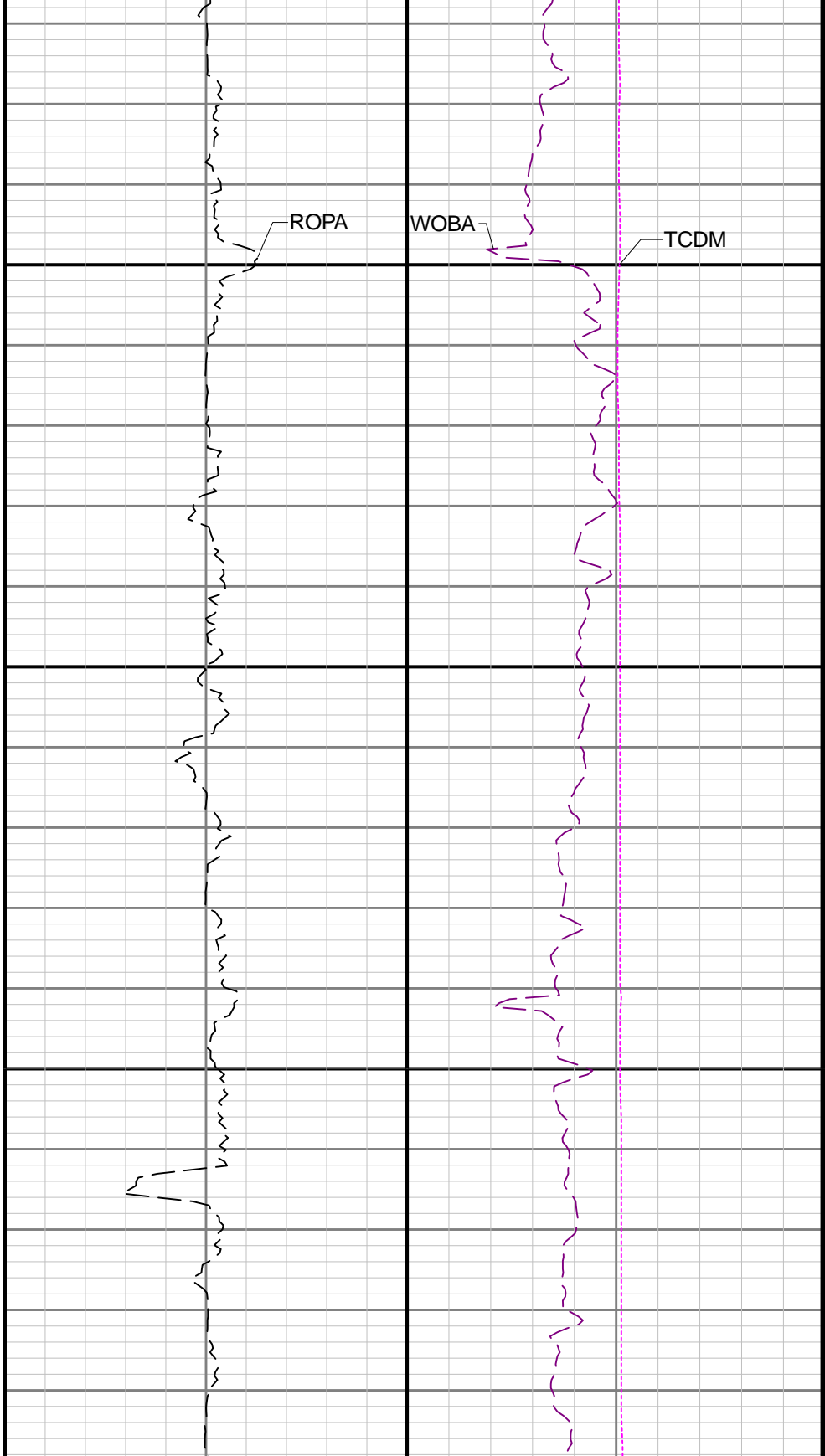
4900

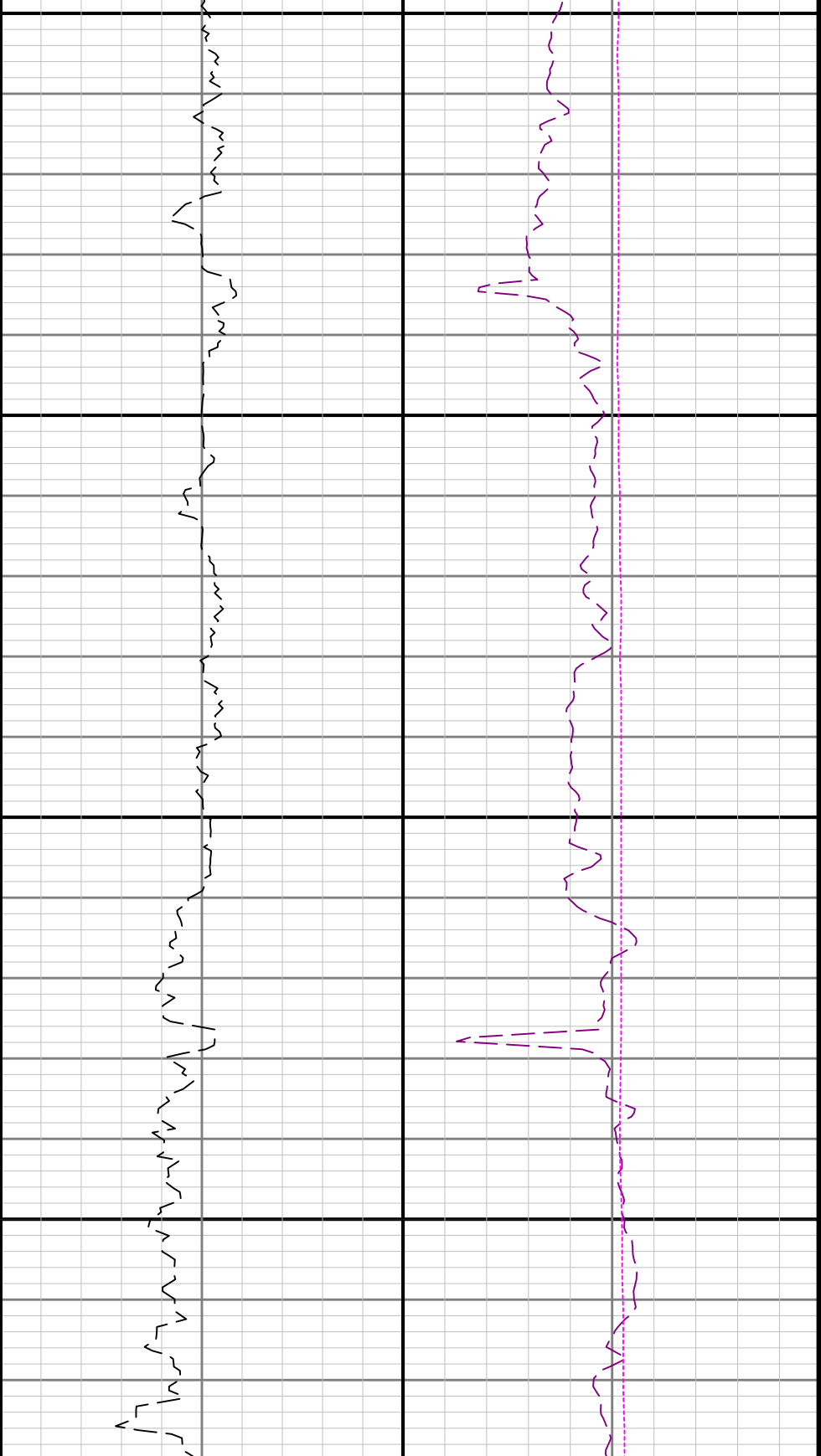




5000

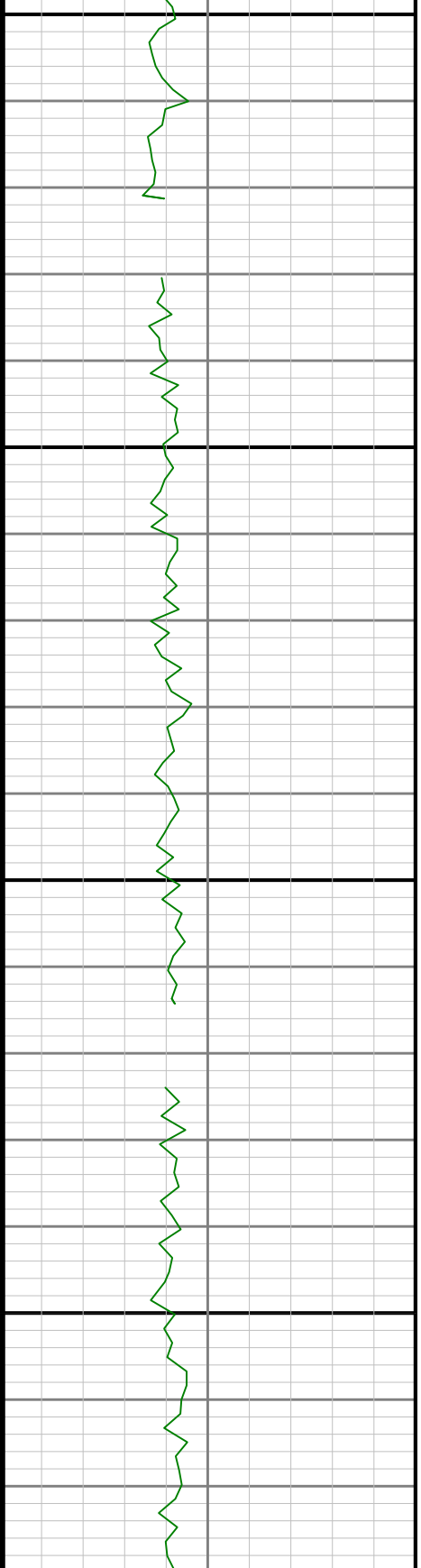
5100





5200

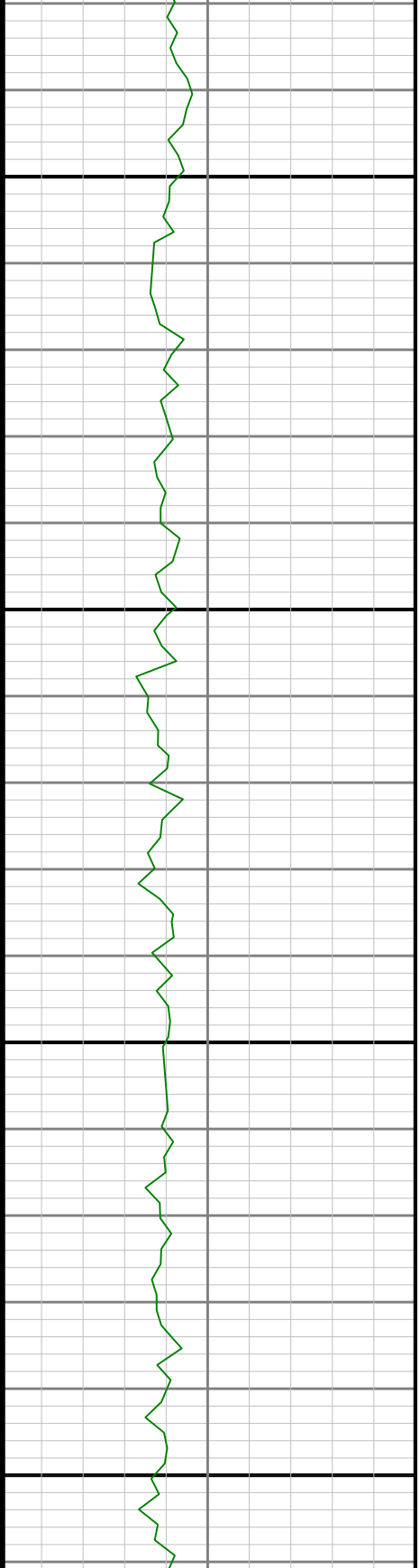
5300

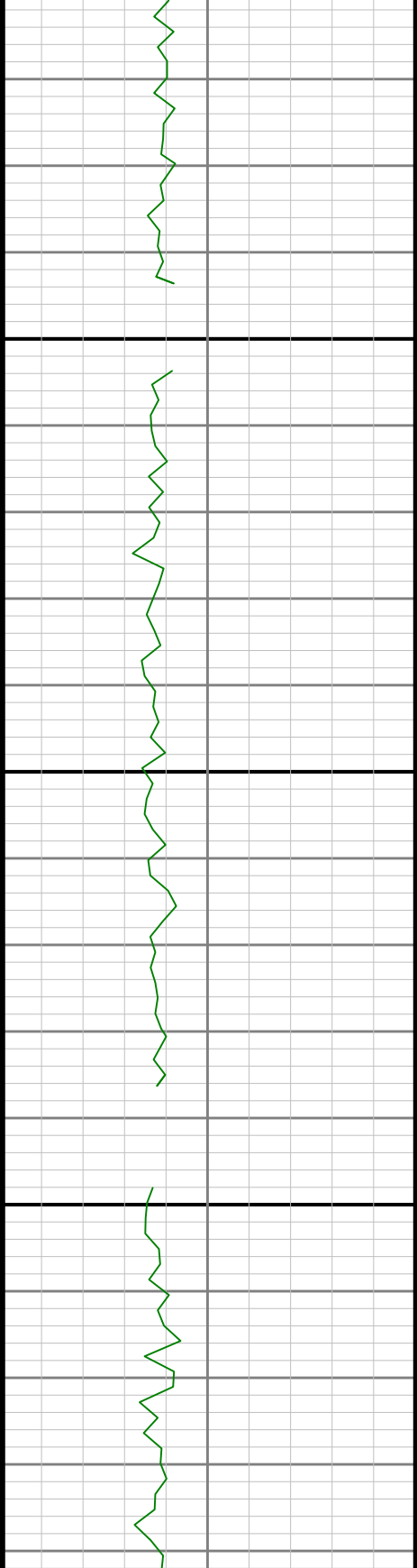




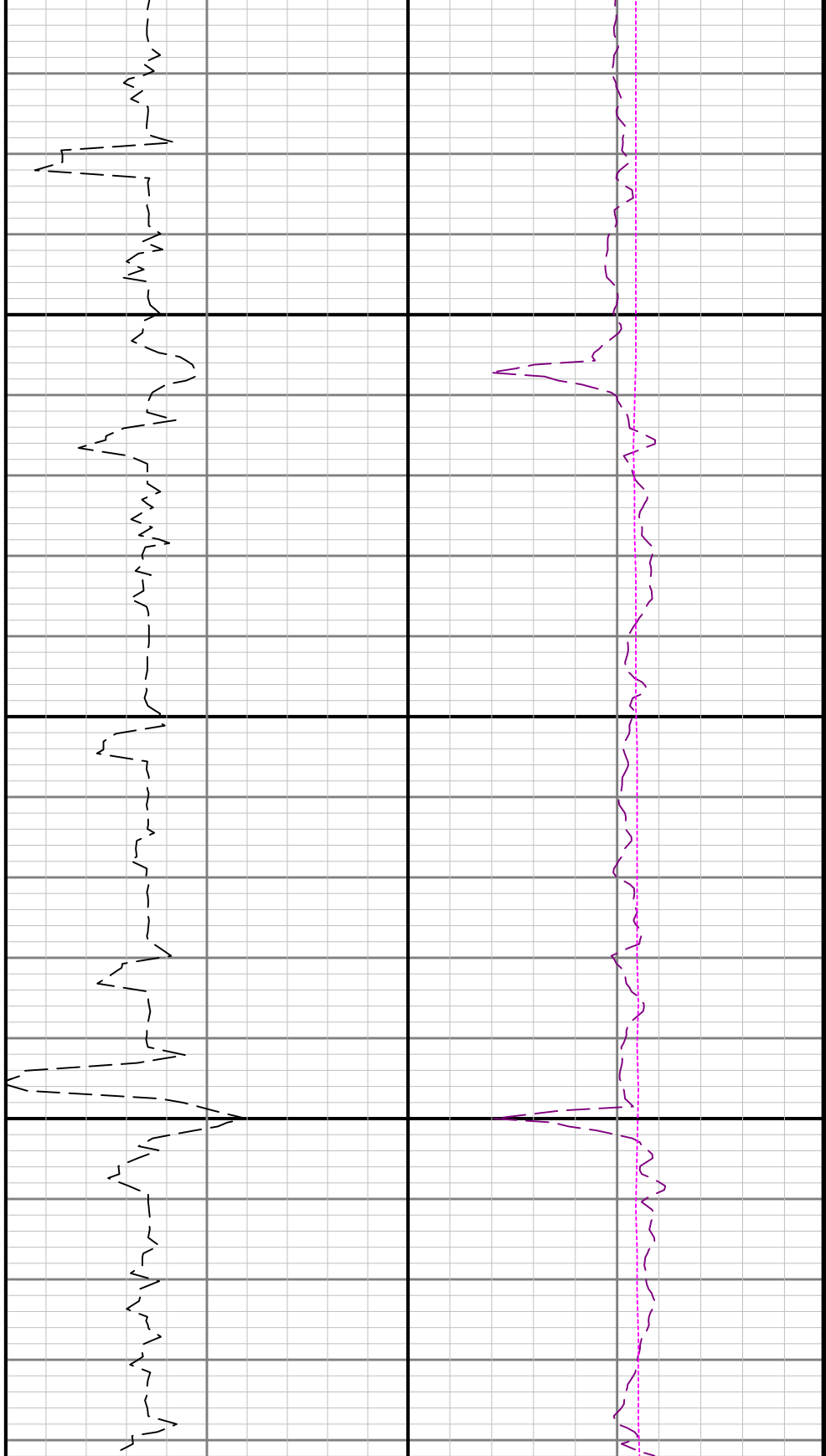
5400

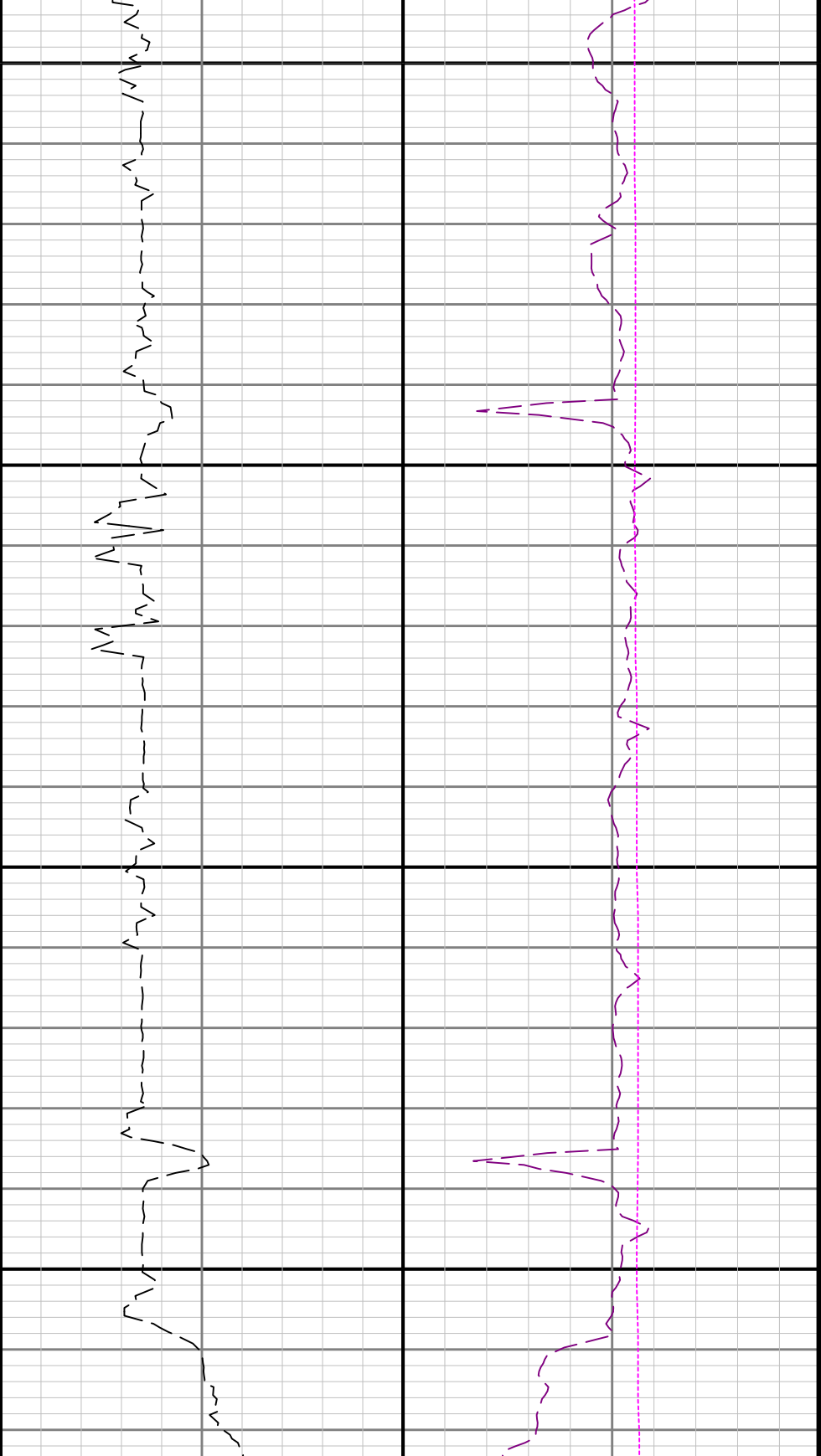
5500





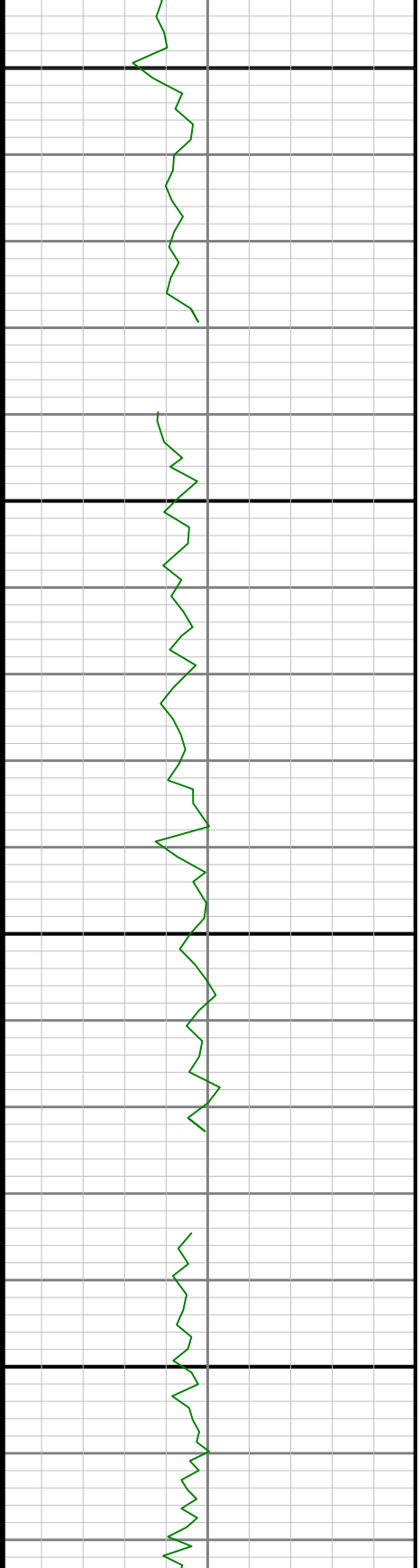
5600

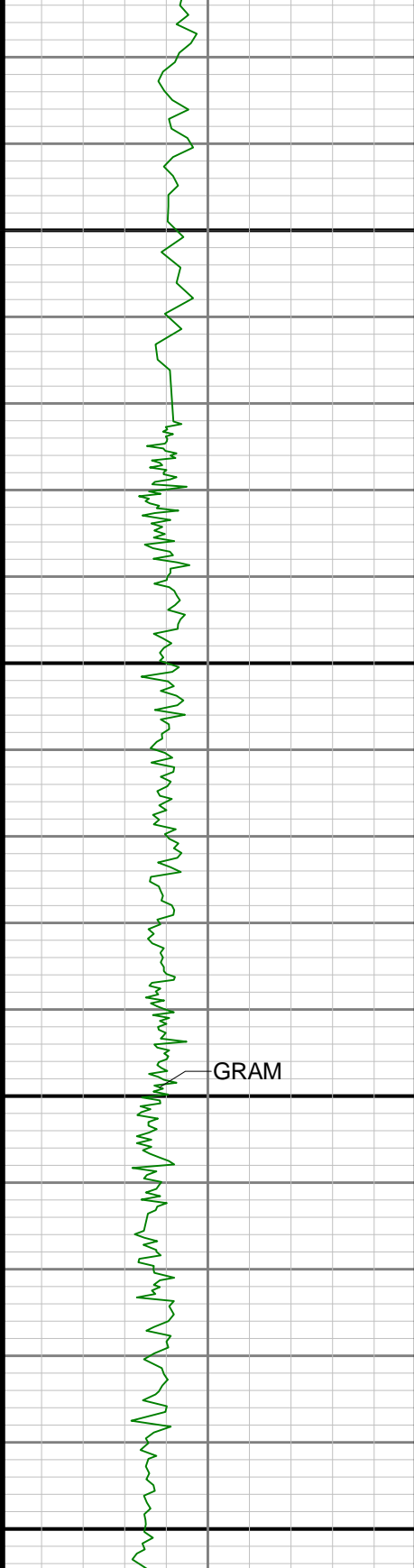




5700

5800

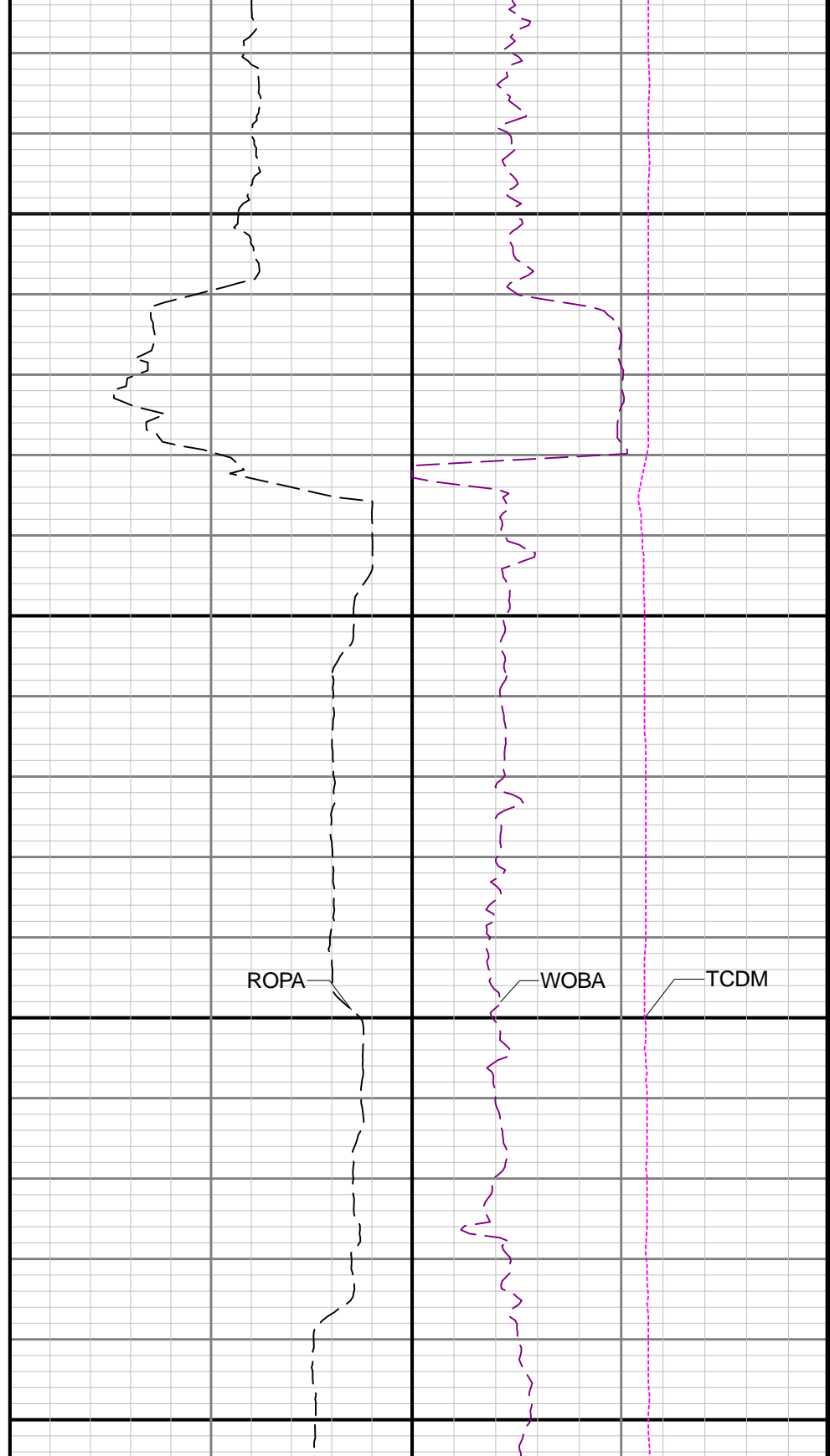




5900

6000

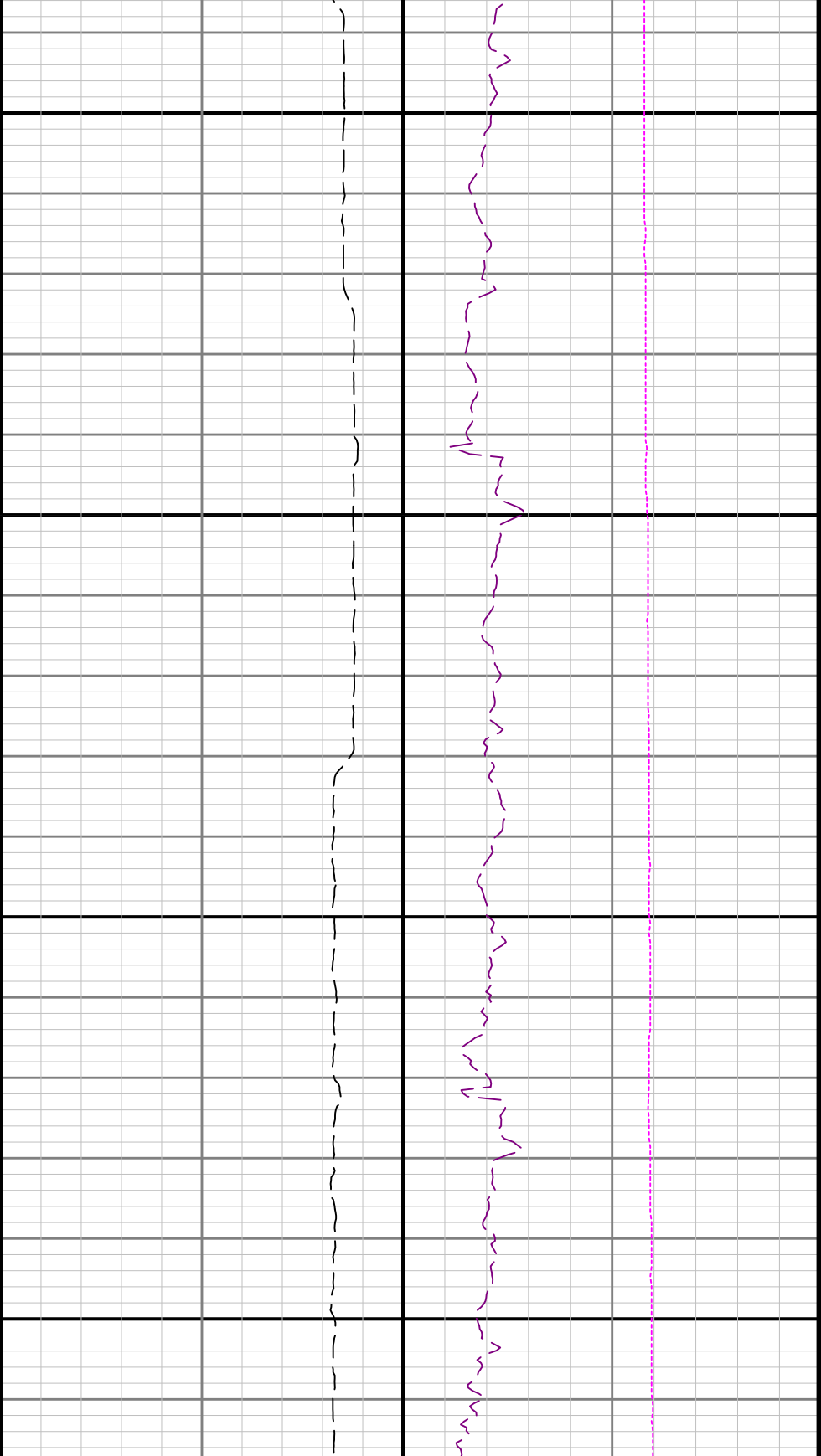
GRAM



ROPA

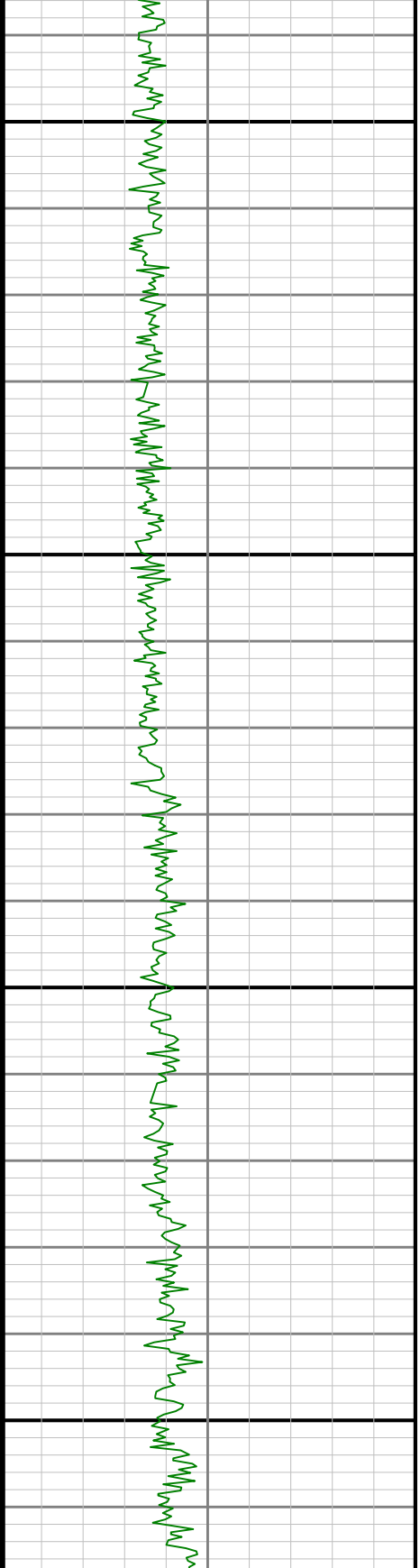
WOBA

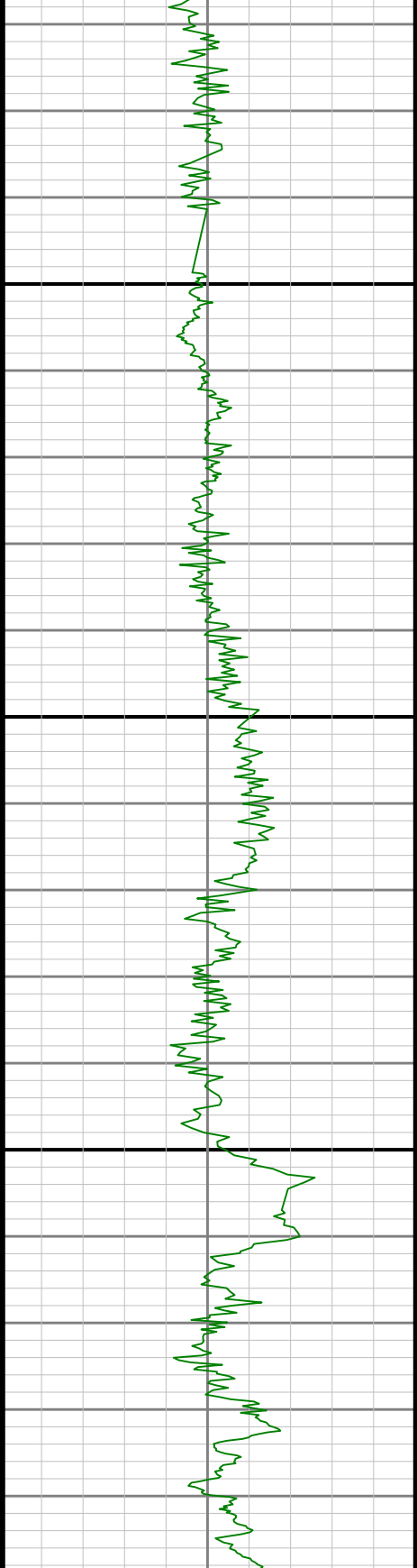
TCDM



6300

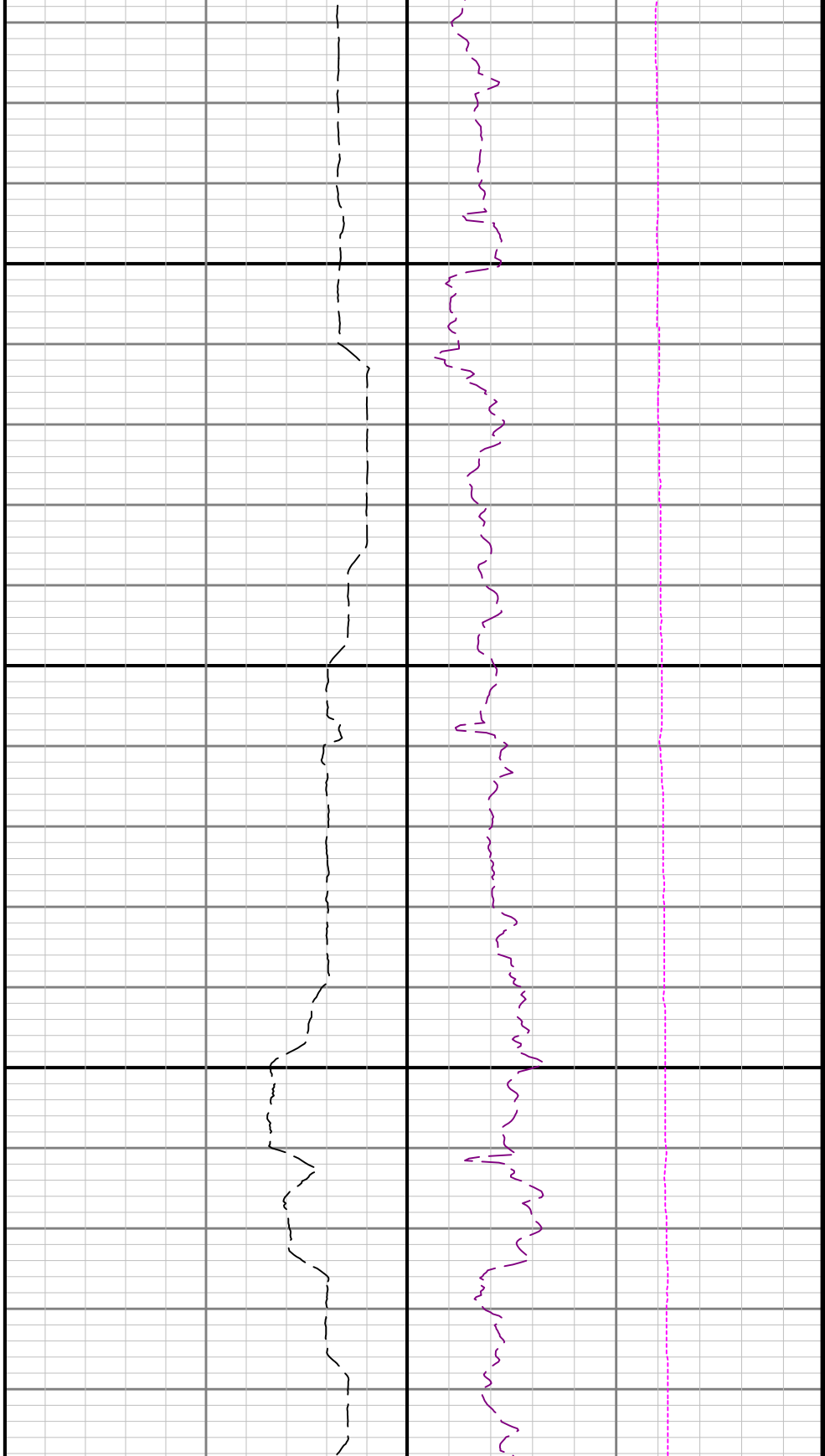
6400





9

6500



	745.00	0.45	221.00	N/A	-3.07	-1.27	744.99	-3982.01	2.98	94.62	0.31	-0.29	11.77
	839.47	0.05	227.96	N/A	-3.38	-1.55	839.46	-3887.54	3.27	94.47	0.42	-0.42	7.37
	934.26	0.25	270.56	N/A	-3.41	-1.78	934.25	-3792.75	3.28	94.79	0.23	0.21	44.94
	1028.80	0.53	296.62	N/A	-3.21	-2.38	1028.79	-3698.21	3.04	94.54	0.34	0.30	27.57
	1123.60	0.44	282.26	N/A	-2.93	-3.13	1123.58	-3603.42	2.72	94.80	0.16	-0.09	-15.15
	1217.60	0.44	306.81	N/A	-2.64	-3.77	1217.58	-3509.42	2.39	94.00	0.20	0.00	26.12
	1312.10	0.45	298.74	N/A	-2.24	-4.39	1312.08	-3414.92	1.95	94.50	0.07	0.01	-8.54
	1406.30	0.43	300.78	N/A	-1.89	-5.01	1406.27	-3320.73	1.55	94.20	0.03	-0.02	2.17
	1500.70	0.39	274.14	N/A	-1.68	-5.64	1500.67	-3226.33	1.31	94.40	0.20	-0.04	-28.22
	1595.30	0.15	260.02	N/A	-1.68	-6.08	1595.27	-3131.73	1.28	94.60	0.26	-0.25	-14.93
	1689.80	0.39	217.53	N/A	-1.96	-6.40	1689.77	-3037.23	1.53	94.50	0.31	0.25	-44.96
	1784.21	0.60	214.42	N/A	-2.62	-6.87	1784.18	-2942.82	2.16	94.41	0.22	0.22	-3.29
	1879.69	0.39	215.50	N/A	-3.30	-7.35	1879.65	-2847.35	2.80	95.48	0.22	-0.22	1.13
	1929.00	0.33	203.46	N/A	-3.56	-7.50	1928.96	-2798.04	3.06	49.31	0.20	-0.12	-24.42
	1988.00	0.50	112.54	106.8	-3.82	-7.33	1987.96	-2739.04	3.33	59.00	1.02	0.29	-154.10
	2082.00	2.20	84.23	109.5	-3.79	-5.16	2081.93	-2645.07	3.44	94.00	1.89	1.81	-30.12
	2271.00	5.71	85.59	114.9	-2.70	7.83	2270.45	-2456.55	3.22	189.00	1.86	1.86	0.72
	2366.00	7.22	83.45	117.6	-1.66	18.48	2364.84	-2362.16	2.87	95.00	1.61	1.59	-2.25
	2460.00	8.77	84.16	79.7	-0.26	31.47	2457.93	-2269.07	2.33	94.00	1.65	1.65	0.76
	2555.00	8.89	83.82	52.7	1.27	45.98	2551.80	-2175.20	1.76	95.00	0.14	0.13	-0.36
	2649.00	9.06	83.21	120.3	2.93	60.55	2644.65	-2082.35	1.07	94.00	0.21	0.18	-0.65
	2744.00	9.29	83.61	123.0	4.66	75.59	2738.44	-1988.56	0.33	95.00	0.25	0.24	0.42
	2838.00	9.02	85.87	125.7	6.04	90.48	2831.24	-1895.76	-0.06	94.00	0.48	-0.29	2.40
	2933.00	8.52	83.99	128.4	7.31	104.91	2925.13	-1801.87	-0.38	95.00	0.61	-0.53	-1.98
	3027.00	9.16	84.82	128.4	8.72	119.29	3018.01	-1708.99	-0.83	94.00	0.69	0.68	0.88
	3121.00	8.43	86.65	128.4	9.80	133.62	3110.90	-1616.10	-0.97	94.00	0.83	-0.78	1.95
	3216.00	8.69	85.71	128.4	10.74	147.72	3204.85	-1522.15	-0.98	95.00	0.31	0.27	-0.99
	3311.00	8.66	86.38	131.1	11.73	162.02	3298.76	-1428.24	-1.02	95.00	0.11	-0.03	0.71
	3405.00	8.53	85.63	131.1	12.71	176.03	3391.70	-1335.30	-1.07	94.00	0.18	-0.14	-0.80
	3500.00	8.63	87.52	131.1	13.55	190.18	3485.64	-1241.36	-0.98	95.00	0.31	0.11	1.99
	3594.00	8.67	88.15	133.8	14.08	204.31	3578.57	-1148.43	-0.59	94.00	0.11	0.04	0.67
	3689.00	8.65	87.72	133.8	14.60	218.60	3672.49	-1054.51	-0.16	95.00	0.07	-0.02	-0.45
	3783.00	9.52	83.49	136.5	15.76	233.39	3765.31	-961.69	-0.34	94.00	1.17	0.93	-4.50
	3878.00	9.44	83.49	136.5	17.54	248.93	3859.01	-867.99	-1.09	95.00	0.08	-0.08	0.00
	3973.00	9.53	83.89	136.5	19.26	264.49	3952.71	-774.29	-1.78	95.00	0.12	0.09	0.42
	4067.00	9.52	83.28	139.2	20.99	279.95	4045.42	-681.58	-2.49	94.00	0.11	-0.01	-0.65
	4161.00	9.28	84.47	141.9	22.63	295.22	4138.16	-588.84	-3.12	94.00	0.33	-0.26	1.27
	4256.00	9.24	84.79	141.9	24.07	310.43	4231.92	-495.08	-3.55	95.00	0.07	-0.04	0.34
	4350.00	9.47	84.29	141.9	25.52	325.65	4324.67	-402.33	-4.00	94.00	0.26	0.24	-0.53
	4444.00	9.27	84.66	144.6	26.99	340.88	4417.41	-309.59	-4.46	94.00	0.22	-0.21	0.39
	4539.00	9.29	84.96	144.6	28.38	356.13	4511.17	-215.83	-4.84	95.00	0.06	0.02	0.32
	4633.00	9.37	84.36	147.3	29.80	371.31	4603.93	-123.07	-5.26	94.00	0.13	0.09	-0.64
	4728.00	9.31	85.00	147.3	31.23	386.66	4697.67	-29.33	-5.67	95.00	0.13	-0.06	0.67
	4823.00	9.37	84.42	150.0	32.65	402.01	4791.41	64.41	-6.08	95.00	0.12	0.06	-0.61
	4917.00	9.47	82.96	152.7	34.34	417.30	4884.14	157.14	-6.76	94.00	0.28	0.11	-1.55
	5011.00	9.37	82.74	150.0	36.26	432.57	4976.87	249.87	-7.66	94.00	0.11	-0.11	-0.23
	5106.00	9.30	83.31	152.7	38.13	447.86	5070.61	343.61	-8.52	95.00	0.12	-0.07	0.60
	5200.00	9.27	83.44	152.7	39.88	462.93	5163.38	436.38	-9.27	94.00	0.04	-0.03	0.14
	5294.00	9.25	83.22	155.4	41.63	477.95	5256.16	529.16	-10.04	94.00	0.04	-0.02	-0.23
	5389.00	9.25	83.40	158.1	43.41	493.12	5349.92	622.92	-10.81	95.00	0.03	0.00	0.19
	5483.00	9.21	84.19	160.8	45.04	508.11	5442.71	715.71	-11.45	94.00	0.14	-0.04	0.84
	5578.00	9.24	83.42	163.5	46.69	523.25	5536.48	809.48	-12.09	95.00	0.13	0.03	-0.81
	5672.00	9.21	83.83	166.2	48.36	538.22	5629.26	902.26	-12.77	94.00	0.08	-0.03	0.44
	5861.00	9.21	84.06	168.9	51.55	568.30	5815.82	1088.82	-13.97	189.00	0.02	0.00	0.12
	5956.00	9.19	85.85	166.2	52.89	583.43	5909.60	1182.60	-14.31	95.00	0.30	-0.02	1.88
	6050.00	10.15	112.89	168.9	50.21	598.56	6002.31	1275.31	-10.64	94.00	4.89	1.02	28.77
	6145.00	16.15	133.68	171.6	37.81	615.85	6094.83	1367.83	2.87	95.00	7.95	6.32	21.88
	6239.00	20.18	154.54	171.6	14.11	632.30	6184.22	1457.22	27.61	94.00	8.07	4.29	22.19
	6334.00	26.22	160.70	174.3	-20.53	646.29	6271.51	1544.51	63.10	95.00	6.84	6.36	6.48
	6428.00	34.12	164.00	177.0	-65.55	660.45	6352.72	1625.72	108.95	94.00	8.58	8.40	3.51

	6523.00	42.09	163.03	179.7	-121.70	677.11	6427.41	1700.41	166.08	95.00	8.41	8.39	-1.02
	6617.00	49.32	165.86	185.2	-186.49	695.04	6493.02	1766.02	231.91	94.00	7.99	7.69	3.01
	6712.00	57.38	173.03	185.2	-261.32	708.73	6549.73	1822.73	307.48	95.00	10.41	8.48	7.55
	6806.00	64.89	179.31	187.9	-343.35	714.06	6595.11	1868.11	389.68	94.00	9.90	7.99	6.68
	6900.00	73.20	180.90	190.6	-431.05	713.86	6628.70	1901.70	477.18	94.00	8.98	8.84	1.69
	6995.00	79.13	178.96	190.6	-523.25	713.99	6651.41	1924.41	569.18	95.00	6.55	6.24	-2.04
	7089.00	86.58	180.23	193.3	-616.45	714.64	6663.09	1936.09	662.22	94.00	8.04	7.93	1.35
	7184.00	89.60	179.43	193.3	-711.38	714.93	6666.26	1939.26	756.97	95.00	3.29	3.18	-0.84
	7278.00	89.82	179.42	198.7	-805.38	715.87	6666.74	1939.74	850.82	94.00	0.23	0.23	-0.01
	7373.00	89.85	180.42	201.4	-900.38	716.00	6667.01	1940.01	945.62	95.00	1.05	0.03	1.05
	7467.00	89.97	179.95	201.4	-994.38	715.70	6667.16	1940.16	1039.40	94.00	0.52	0.13	-0.50
	7562.00	90.25	179.67	206.8	-1089.38	716.01	6666.97	1939.97	1134.21	95.00	0.42	0.29	-0.29
	7656.00	89.94	182.23	209.5	-1183.35	714.45	6666.82	1939.82	1227.88	94.00	2.74	-0.33	2.72
	7751.00	89.57	179.95	212.2	-1278.33	712.65	6667.22	1940.22	1322.53	95.00	2.43	-0.39	-2.40
	7845.00	89.45	179.82	212.2	-1372.33	712.84	6668.03	1941.03	1416.34	94.00	0.19	-0.13	-0.14
	7940.00	90.11	180.94	212.2	-1467.32	712.21	6668.39	1941.39	1511.08	95.00	1.37	0.69	1.18
	8034.00	89.71	180.51	212.2	-1561.31	711.02	6668.54	1941.54	1604.79	94.00	0.62	-0.43	-0.46
	8129.00	89.83	180.09	214.9	-1656.31	710.52	6668.92	1941.92	1699.55	95.00	0.46	0.13	-0.44
	8223.00	90.20	179.37	214.9	-1750.31	710.96	6668.90	1941.90	1793.37	94.00	0.86	0.39	-0.77
	8318.00	90.11	180.37	217.6	-1845.31	711.18	6668.64	1941.64	1888.18	95.00	1.06	-0.09	1.05
	8412.00	89.98	180.35	220.3	-1939.31	710.59	6668.57	1941.57	1981.93	94.00	0.14	-0.14	-0.02
	8507.00	90.17	180.34	220.3	-2034.30	710.02	6668.44	1941.44	2076.69	95.00	0.20	0.20	-0.01
	8601.00	90.07	180.93	223.0	-2128.30	708.97	6668.25	1941.25	2170.41	94.00	0.64	-0.11	0.63
	8696.00	90.07	180.37	223.0	-2223.29	707.90	6668.13	1941.13	2265.12	95.00	0.59	0.00	-0.59
	8790.00	90.04	180.16	225.7	-2317.29	707.46	6668.04	1941.04	2358.89	94.00	0.23	-0.03	-0.22
	8885.00	90.26	180.31	225.7	-2412.29	707.07	6667.79	1940.79	2453.65	95.00	0.28	0.23	0.16
	8980.00	90.44	179.26	228.4	-2507.28	707.43	6667.21	1940.21	2548.47	95.00	1.12	0.19	-1.11
	9074.00	89.28	179.78	231.1	-2601.28	708.22	6667.44	1940.44	2642.31	94.00	1.35	-1.23	0.55
	9168.00	90.26	182.05	231.1	-2695.26	706.71	6667.82	1940.82	2735.99	94.00	2.63	1.04	2.41
	9263.00	90.08	182.15	231.1	-2790.19	703.23	6667.54	1940.54	2830.49	95.00	0.22	-0.19	0.11
	9358.00	90.11	182.14	233.8	-2885.13	699.68	6667.38	1940.38	2924.98	95.00	0.03	0.03	-0.01
	9452.00	90.08	181.99	233.8	-2979.07	696.29	6667.22	1940.22	3018.49	94.00	0.16	-0.03	-0.16
	9546.00	90.04	180.75	233.8	-3073.04	694.04	6667.12	1940.12	3112.11	94.00	1.32	-0.04	-1.32
	9640.00	89.83	182.26	233.8	-3167.00	691.57	6667.23	1940.23	3205.71	94.00	1.62	-0.22	1.61
	9735.00	89.95	181.16	236.5	-3261.96	688.74	6667.41	1940.41	3300.27	95.00	1.16	0.13	-1.16
	9830.00	90.04	180.43	228.4	-3356.95	687.42	6667.42	1940.42	3394.96	95.00	0.77	0.09	-0.77
	9924.00	89.49	180.24	239.2	-3450.95	686.87	6667.81	1940.81	3488.72	94.00	0.62	-0.59	-0.20
	10018.00	89.89	181.01	239.2	-3544.94	685.85	6668.31	1941.31	3582.44	94.00	0.92	0.43	0.82
	10113.00	90.14	180.34	239.2	-3639.93	684.73	6668.29	1941.29	3677.15	95.00	0.75	0.26	-0.71
	10207.00	90.54	179.89	241.9	-3733.93	684.54	6667.73	1940.73	3770.93	94.00	0.64	0.43	-0.48
	10301.00	90.81	181.47	239.2	-3827.91	683.42	6666.62	1939.62	3864.64	94.00	1.71	0.29	1.68
	10396.00	90.41	181.14	225.7	-3922.88	681.26	6665.61	1938.61	3959.26	95.00	0.55	-0.42	-0.35
	10490.00	90.35	180.67	228.4	-4016.87	679.78	6664.99	1937.99	4052.94	94.00	0.50	-0.06	-0.50
	10585.00	90.20	178.65	231.1	-4111.86	680.34	6664.53	1937.53	4147.77	95.00	2.13	-0.16	-2.13
	10679.00	90.32	179.64	233.8	-4205.85	681.74	6664.11	1937.11	4241.64	94.00	1.06	0.13	1.05
	10774.00	90.54	179.27	233.8	-4300.84	682.65	6663.39	1936.39	4336.49	95.00	0.45	0.23	-0.39
	10869.00	90.29	179.78	236.5	-4395.83	683.43	6662.71	1935.71	4431.33	95.00	0.60	-0.26	0.54
	10963.00	90.32	179.85	239.2	-4489.83	683.74	6662.21	1935.21	4525.14	94.00	0.08	0.03	0.07
	11058.00	90.29	179.88	239.2	-4584.83	683.96	6661.70	1934.70	4619.95	95.00	0.04	-0.03	0.03
	11152.00	89.98	179.61	236.5	-4678.83	684.38	6661.48	1934.48	4713.77	94.00	0.44	-0.33	-0.29
	11247.00	90.14	180.05	241.9	-4773.83	684.66	6661.38	1934.38	4808.58	95.00	0.49	0.17	0.46
	11436.00	90.04	179.45	244.6	-4962.83	685.48	6661.08	1934.08	4997.22	189.00	0.32	-0.05	-0.32
	11531.00	90.17	180.16	247.3	-5057.82	685.81	6660.91	1933.91	5092.03	95.00	0.76	0.14	0.75
	11625.00	90.11	179.93	247.3	-5151.82	685.73	6660.68	1933.68	5185.82	94.00	0.25	-0.06	-0.24
	11720.00	90.20	180.10	247.3	-5246.82	685.71	6660.42	1933.42	5280.62	95.00	0.20	0.09	0.18
	11814.00	90.01	179.43	250.0	-5340.82	686.10	6660.25	1933.25	5374.44	94.00	0.74	-0.20	-0.71
	11909.00	90.48	179.42	250.0	-5435.82	687.05	6659.84	1932.84	5469.29	95.00	0.49	0.49	-0.01
	12003.00	90.23	180.04	250.0	-5529.81	687.49	6659.26	1932.26	5563.11	94.00	0.71	-0.27	0.66
	12098.00	90.11	180.22	250.0	-5624.81	687.28	6658.98	1931.98	5657.89	95.00	0.23	-0.13	0.19
	12192.00	90.32	180.24	250.0	-5718.81	686.90	6658.63	1931.63	5751.65	94.00	0.22	0.22	0.02
	12287.00	90.29	179.65	252.7	-5813.81	686.99	6658.12	1931.12	5846.45	95.00	0.62	-0.03	-0.62

	12381.00	90.38	179.65	255.4	-5907.81	687.56	6657.57	1930.57	5940.28	94.00	0.10	0.10	0.00
	12476.00	90.17	180.29	252.7	-6002.80	687.61	6657.11	1930.11	6035.08	95.00	0.71	-0.22	0.67
	12571.00	90.14	181.11	255.4	-6097.80	686.45	6656.86	1929.86	6129.79	95.00	0.86	-0.03	0.86
	12665.00	90.38	180.44	255.4	-6191.79	685.18	6656.43	1929.43	6223.49	94.00	0.76	0.26	-0.71
	12760.00	89.67	181.54	258.1	-6286.77	683.54	6656.39	1929.39	6318.16	95.00	1.38	-0.75	1.16
	12855.00	90.07	182.30	258.1	-6381.72	680.36	6656.61	1929.61	6412.68	95.00	0.90	0.42	0.80
	12949.00	90.17	182.97	258.1	-6475.62	676.04	6656.41	1929.41	6506.10	94.00	0.72	0.11	0.71
	13044.00	90.35	183.07	258.1	-6570.48	671.03	6655.98	1928.98	6600.43	95.00	0.22	0.19	0.11
	13139.00	90.23	182.12	258.1	-6665.38	666.73	6655.50	1928.50	6694.84	95.00	1.01	-0.13	-1.00
	13233.00	90.38	183.06	260.8	-6759.28	662.48	6655.00	1928.00	6788.25	94.00	1.01	0.16	1.00
	13328.00	89.98	178.31	260.8	-6854.25	661.35	6654.70	1927.70	6882.94	95.00	5.02	-0.42	-5.00
	13422.00	90.32	179.16	260.8	-6948.22	663.42	6654.45	1927.45	6976.85	94.00	0.97	0.36	0.90
	13611.00	89.98	178.83	263.5	-7137.19	666.74	6653.96	1926.96	7165.62	189.00	0.25	-0.18	-0.17
	13706.00	90.17	178.76	263.5	-7232.17	668.73	6653.83	1926.83	7260.53	95.00	0.21	0.20	-0.07
	13801.00	90.26	178.83	263.5	-7327.15	670.73	6653.48	1926.48	7355.43	95.00	0.12	0.09	0.07
	13895.00	90.20	178.94	266.2	-7421.13	672.56	6653.10	1926.10	7449.33	94.00	0.13	-0.06	0.12
	13990.00	90.17	178.58	266.2	-7516.11	674.62	6652.79	1925.79	7544.23	95.00	0.38	-0.03	-0.38
	14085.00	89.95	179.13	266.2	-7611.09	676.52	6652.69	1925.69	7639.13	95.00	0.62	-0.23	0.58
	14179.00	89.80	180.01	239.2	-7705.09	677.22	6652.90	1925.90	7732.97	94.00	0.95	-0.16	0.94
	14273.00	90.11	180.61	244.6	-7799.09	676.71	6652.97	1925.97	7826.73	94.00	0.72	0.33	0.64
	14368.00	90.04	179.67	247.3	-7894.08	676.48	6652.85	1925.85	7921.51	95.00	0.99	-0.07	-0.99
	14463.00	89.92	180.34	252.7	-7989.08	676.47	6652.88	1925.88	8016.30	95.00	0.72	-0.13	0.71
	14557.00	90.14	178.98	252.7	-8083.08	677.03	6652.83	1925.83	8110.13	94.00	1.47	0.23	-1.45
	14652.00	89.92	178.21	252.7	-8178.05	679.36	6652.78	1925.78	8205.05	95.00	0.84	-0.23	-0.81
	14746.00	90.26	178.81	255.4	-8272.02	681.80	6652.63	1925.63	8298.97	94.00	0.73	0.36	0.64
	14841.00	90.14	178.18	269.0	-8366.98	684.30	6652.30	1925.30	8393.89	95.00	0.68	-0.13	-0.66
	14936.00	89.92	178.37	258.1	-8461.94	687.16	6652.25	1925.25	8488.83	95.00	0.31	-0.23	0.20
	15030.00	90.20	177.77	255.4	-8555.89	690.32	6652.15	1925.15	8582.78	94.00	0.70	0.30	-0.64
	15125.00	89.89	178.88	258.1	-8650.84	693.10	6652.08	1925.08	8677.72	95.00	1.21	-0.33	1.17
	15219.00	89.98	178.83	258.1	-8744.83	694.98	6652.19	1925.19	8771.62	94.00	0.11	0.10	-0.05
	15314.00	90.23	176.99	260.8	-8839.76	698.44	6652.01	1925.01	8866.57	95.00	1.95	0.26	-1.94
	15409.00	90.23	179.19	260.8	-8934.70	701.61	6651.63	1924.63	8961.52	95.00	2.32	0.00	2.32
	15503.00	90.57	178.79	260.8	-9028.68	703.27	6650.97	1923.97	9055.40	94.00	0.56	0.36	-0.43
	15598.00	90.47	178.51	263.5	-9123.65	705.50	6650.11	1923.11	9150.31	95.00	0.31	-0.11	-0.29
	15692.00	90.38	178.64	263.5	-9217.62	707.84	6649.41	1922.41	9244.23	94.00	0.17	-0.10	0.14
	15787.00	90.38	178.30	263.5	-9312.58	710.38	6648.78	1921.78	9339.16	95.00	0.36	0.00	-0.36
	15976.00	89.92	179.91	263.5	-9501.55	713.33	6648.29	1921.29	9527.91	189.00	0.89	-0.24	0.85
	16070.00	90.26	178.77	263.5	-9595.54	714.41	6648.14	1921.14	9621.77	94.00	1.27	0.36	-1.21
	16164.00	90.69	178.90	263.5	-9689.52	716.32	6647.36	1920.36	9715.67	94.00	0.48	0.46	0.14
	16259.00	90.35	179.77	266.2	-9784.51	717.43	6646.50	1919.50	9810.52	95.00	0.98	-0.36	0.92
	16353.00	90.57	179.04	266.2	-9878.50	718.40	6645.75	1918.75	9904.37	94.00	0.81	0.23	-0.78
	16448.00	90.72	179.10	269.0	-9973.48	719.95	6644.68	1917.68	9999.25	95.00	0.17	0.16	0.06
	16542.00	90.63	179.06	269.0	-10067.46	721.45	6643.57	1916.57	10093.13	94.00	0.10	-0.10	-0.04
	16636.00	90.20	179.38	271.7	-10161.45	722.73	6642.89	1915.89	10186.99	94.00	0.57	-0.46	0.34
	16731.00	90.32	179.64	269.0	-10256.45	723.55	6642.46	1915.46	10281.84	95.00	0.30	0.13	0.27
	16825.00	90.78	178.27	271.7	-10350.43	725.26	6641.55	1914.55	10375.72	94.00	1.54	0.49	-1.46
	16920.00	90.51	179.05	269.0	-10445.39	727.48	6640.48	1913.48	10470.63	95.00	0.87	-0.28	0.82
	17109.00	90.29	178.92	274.4	-10634.36	730.83	6639.17	1912.17	10659.40	189.00	0.14	-0.12	-0.07
	17203.00	90.69	179.90	271.7	-10728.35	731.80	6638.36	1911.36	10753.25	94.00	1.13	0.43	1.04
	17297.00	90.57	180.11	271.7	-10822.34	731.79	6637.33	1910.33	10847.04	94.00	0.26	-0.13	0.22
Projection	17329.00	90.57	180.11	N/A	-10854.34	731.73	6637.01	1910.01	10878.97	32.00	0.00	-0.00	-0.00