

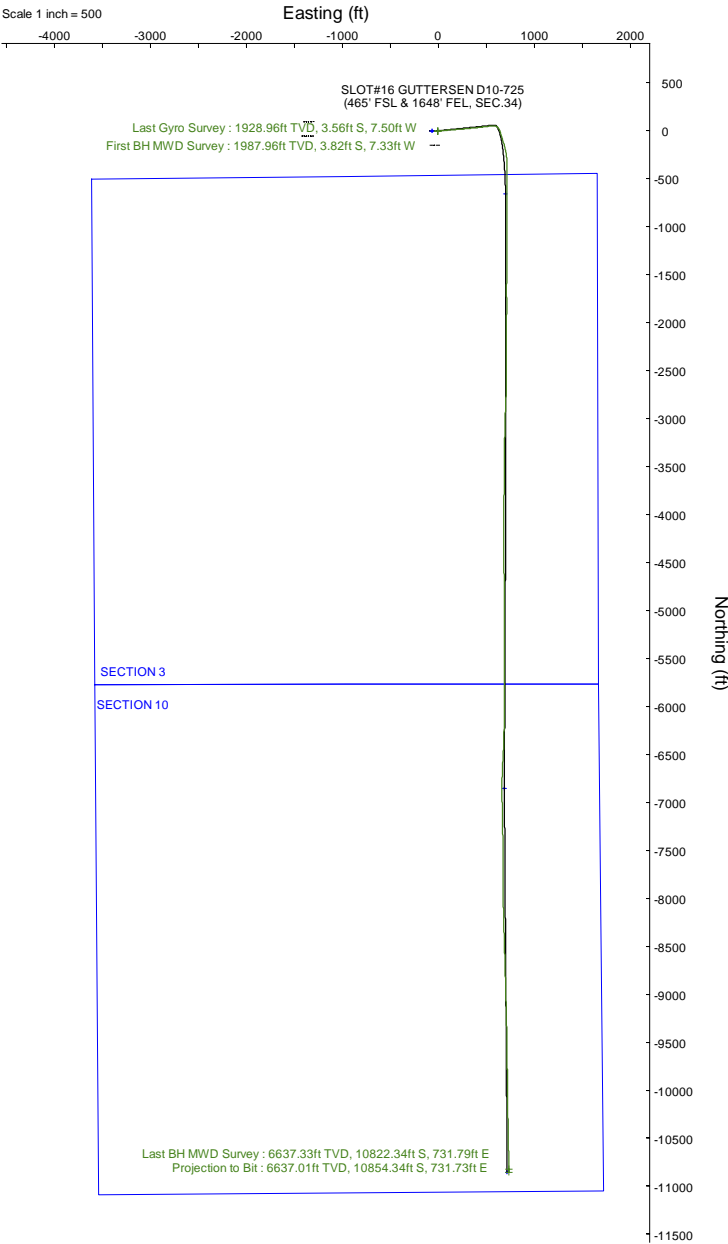
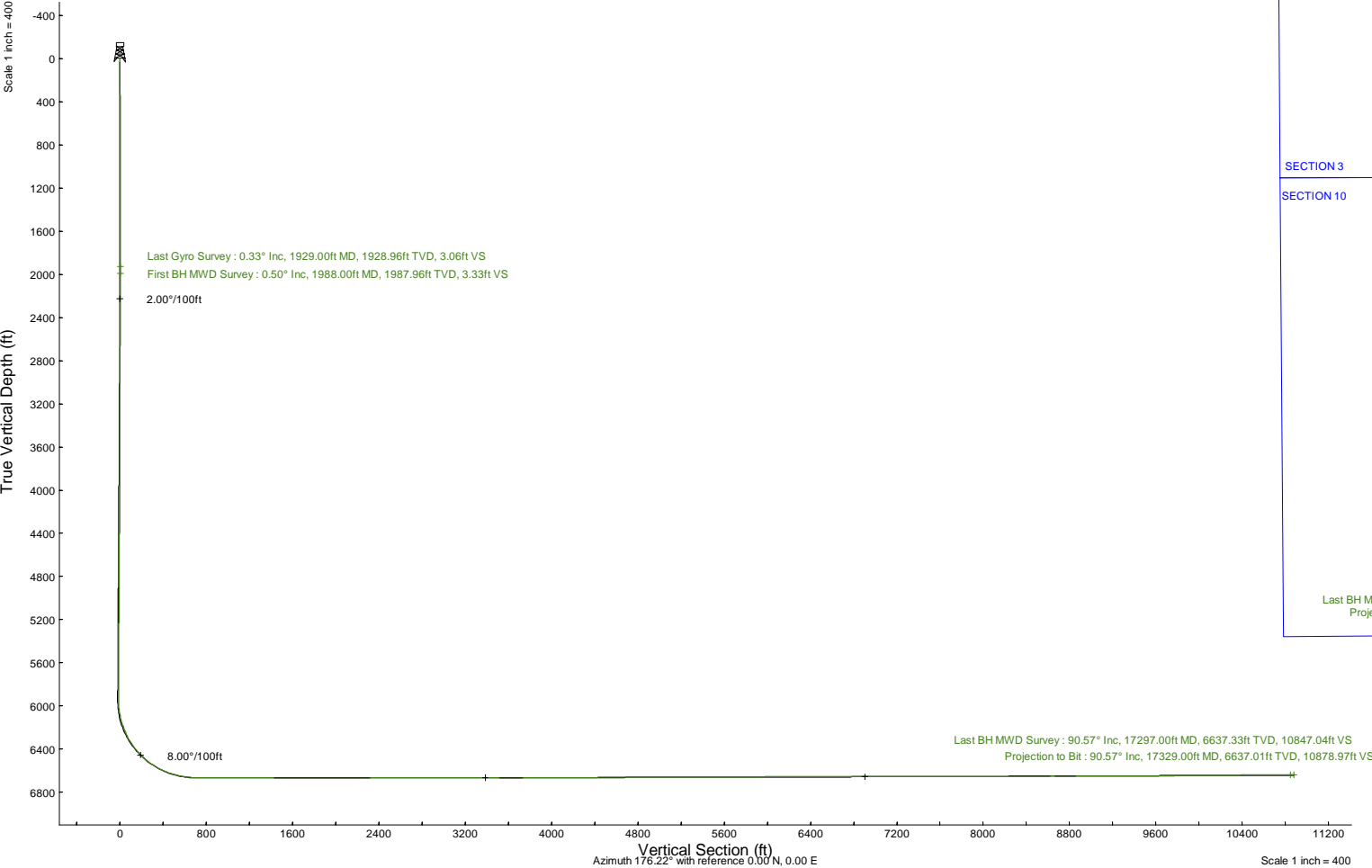
# NOBLE ENERGY, INC



Location:	COLORADO	Slot:	SLOT#16 GUTTERSEN D10-725 (465' FSL & 1648' FEL, SEC.34)
Field:	WELD COUNTY (NOBLE NAD 83 GRID)	Well:	GUTTERSEN D10-725
Facility:	SEC.34-T04N-R64W	Wellbore:	GUTTERSEN D10-725 PWB

Plot reference wellpath is GUTTERSEN D10-725 (REV-A.0) PWP	Grid System: NAD83 / Lambert Colorado SP, Northern Zone (501), US feet
True vertical depths are referenced to H&P 517 (30KB) (RKB)	North Reference: Grid north
Reference wellpath measured depths are referenced to H&P 517 (30KB) (RKB)	Scale: True distance
H&P 517 (30KB) (RKB) to Mean Sea Level: 4727 feet	Coordinates are in feet referenced to Slot
Mean Sea Level to Ground level (At Slot: SLOT#16 GUTTERSEN D10-725 (465' FSL & 1648' FEL, SEC.34)): 0 feet	Depths are in feet
Offset wellpath MDs are referenced to each path's default MD datum	Created by: guenaler on 2022-04-06; Database: WA_Denver

Location Information						
Facility Name			Grid East (US ft)	Grid North (US ft)	Latitude	Longitude
SEC.34-T04N-R64W			3268299.973	1340227.112	40°15'47.8880"N	104°32'18.8880"W
Slot	Local N (ft)	Local E (ft)	Grid East (US ft)	Grid North (US ft)	Latitude	Longitude
SLOT#16 GUTTERSEN D10-725 (465' FSL & 1648' FEL, SEC.34)	-94.09	1399.32	3269699.231	1340133.030	40°15'46.9080"N	104°32'0.8520"W
H&P 517 (30KB) (RKB) to Ground level (At Slot: SLOT#16 GUTTERSEN D10-725 (465' FSL & 1648' FEL, SEC.34))					4727ft	
Mean Sea Level to Ground level (At Slot: SLOT#16 GUTTERSEN D10-725 (465' FSL & 1648' FEL, SEC.34))					0ft	
H&P 517 (30KB) (RKB) to Mean Sea Level					4727ft	





Actual Wellpath Report

GUTTERSEN D10-725 AWP

Page 1 of 7



REFERENCE WELLPATH IDENTIFICATION			
Operator	NOBLE ENERGY, INC	Well	GUTTERSEN D10-725
Field	WELD COUNTY (NOBLE NAD 83 GRID)	API/Legal	
Facility	SEC.34-T04N-R64W	Wellbore	GUTTERSEN D10-725 AWB
Slot	SLOT#16 GUTTERSEN D10-725 (465' FSL & 1648' FEL, SEC.34)		

REPORT SETUP INFORMATION			
Projection System	NAD83 / Lambert Colorado SP, Northern Zone (501), US feet	Software System	WellArchitect® 6.0
North Reference	Grid	User	Guenaler
Scale	0.999957	Report Generated	4/6/2022 at 10:22:29 AM
Convergence at slot	0.62° East	Database	WA_Denver

WELLPATH LOCATION						
	Local coordinates		Grid coordinates		Geographic coordinates	
	North[ft]	East[ft]	Easting[US ft]	Northing[US ft]	Latitude	Longitude
Slot Location	-94.09	1399.32	3269699.23	1340133.03	40°15'46.9080"N	104°32'0.8520"W
Facility Reference Pt			3268299.97	1340227.11	40°15'47.9880"N	104°32'18.8880"W
Field Reference Pt			3000000.00	4454105.15	48°46'34.3150"N	105°30'0.0000"W

WELLPATH DATUM			
Calculation method	Minimum curvature	H&P 517 (30'KB) (RKB) to Facility Vertical Datum	4727.00ft
Horizontal Reference Pt	Slot	H&P 517 (30'KB) (RKB) to Mean Sea Level	4727.00ft
Vertical Reference Pt	H&P 517 (30'KB) (RKB)	H&P 517 (30'KB) (RKB) to Ground Level at Slot (SLOT#16 GUTTERSEN D10-725 (465' FSL & 1648' FEL, SEC.34))	4727.00ft
MD Reference Pt	H&P 517 (30'KB) (RKB)	Section Origin	N 0.00, E 0.00 ft
Field Vertical Reference	Mean Sea Level	Section Azimuth	176.22°



Actual Wellpath Report  
GUTTERSEN D10-725 AWP  
Page 2 of 7



REFERENCE WELLPATH IDENTIFICATION			
Operator	NOBLE ENERGY, INC	Well	GUTTERSEN D10-725
Field	WELD COUNTY (NOBLE NAD 83 GRID)	API/Legal	
Facility	SEC.34-T04N-R64W	Wellbore	GUTTERSEN D10-725 AWB
Slot	SLOT#16 GUTTERSEN D10-725 (465' FSL & 1648' FEL, SEC.34)		

WELLPATH DATA (180 stations)										
MD [ft]	Inclination [°]	Azimuth [°]	TVD [ft]	Vert Sect [ft]	North [ft]	East [ft]	Latitude	Longitude	DLS [°/100ft]	Comments
0.00	0.000	218.790	0.00	0.00	0.00	0.00	40°15'46.9080"N	104°32'0.8520"W	0.00	
87.07	0.240	218.790	87.07	0.13	-0.14	-0.11	40°15'46.9066"N	104°32'0.8535"W	0.28	
181.22	0.140	236.620	181.22	0.34	-0.36	-0.33	40°15'46.9045"N	104°32'0.8564"W	0.12	
272.00	0.330	178.390	272.00	0.65	-0.68	-0.42	40°15'46.9013"N	104°32'0.8575"W	0.31	
366.42	0.130	212.910	366.42	1.01	-1.04	-0.47	40°15'46.8977"N	104°32'0.8582"W	0.25	
461.07	0.260	164.150	461.07	1.31	-1.34	-0.47	40°15'46.8948"N	104°32'0.8582"W	0.21	
555.65	0.130	186.760	555.65	1.62	-1.65	-0.42	40°15'46.8917"N	104°32'0.8577"W	0.16	
650.38	0.720	209.860	650.37	2.22	-2.28	-0.73	40°15'46.8856"N	104°32'0.8618"W	0.64	
745.00	0.450	221.000	744.99	2.98	-3.07	-1.27	40°15'46.8778"N	104°32'0.8688"W	0.31	
839.47	0.050	227.960	839.46	3.27	-3.38	-1.55	40°15'46.8748"N	104°32'0.8724"W	0.42	
934.26	0.250	270.560	934.25	3.28	-3.41	-1.78	40°15'46.8745"N	104°32'0.8755"W	0.23	
1028.80	0.530	296.620	1028.79	3.04	-3.21	-2.38	40°15'46.8766"N	104°32'0.8832"W	0.34	
1123.60	0.440	282.260	1123.58	2.72	-2.93	-3.13	40°15'46.8794"N	104°32'0.8928"W	0.16	
1217.60	0.440	306.810	1217.58	2.39	-2.64	-3.77	40°15'46.8823"N	104°32'0.9010"W	0.20	
1312.10	0.450	298.740	1312.08	1.95	-2.24	-4.39	40°15'46.8863"N	104°32'0.9089"W	0.07	
1406.30	0.430	300.780	1406.27	1.55	-1.89	-5.01	40°15'46.8899"N	104°32'0.9169"W	0.03	
1500.70	0.390	274.140	1500.67	1.31	-1.68	-5.64	40°15'46.8920"N	104°32'0.9250"W	0.20	
1595.30	0.150	260.020	1595.27	1.28	-1.68	-6.08	40°15'46.8921"N	104°32'0.9307"W	0.26	
1689.80	0.390	217.530	1689.77	1.53	-1.96	-6.40	40°15'46.8894"N	104°32'0.9348"W	0.31	
1784.21	0.600	214.420	1784.18	2.16	-2.62	-6.87	40°15'46.8829"N	104°32'0.9410"W	0.22	
1879.69	0.390	215.500	1879.65	2.80	-3.30	-7.35	40°15'46.8762"N	104°32'0.9472"W	0.22	
1929.00	0.330	203.460	1928.96	3.06	-3.56	-7.50	40°15'46.8736"N	104°32'0.9492"W	0.20	Last Gyro Survey
1988.00	0.500	112.540	1987.96	3.33	-3.82	-7.33	40°15'46.8711"N	104°32'0.9471"W	1.02	First BH MWD Survey
2082.00	2.200	84.230	2081.93	3.45	-3.79	-5.16	40°15'46.8711"N	104°32'0.9190"W	1.89	
2271.00	5.710	85.590	2270.45	3.21	-2.70	7.83	40°15'46.8804"N	104°32'0.7514"W	1.86	
2366.00	7.220	83.450	2364.84	2.87	-1.66	18.48	40°15'46.8896"N	104°32'0.6139"W	1.61	
2460.00	8.770	84.160	2457.93	2.33	-0.26	31.47	40°15'46.9021"N	104°32'0.4461"W	1.65	
2555.00	8.890	83.820	2551.80	1.76	1.27	45.98	40°15'46.9156"N	104°32'0.2588"W	0.14	
2649.00	9.060	83.210	2644.65	1.07	2.93	60.55	40°15'46.9304"N	104°32'0.0706"W	0.21	
2744.00	9.290	83.610	2738.44	0.32	4.66	75.59	40°15'46.9459"N	104°31'59.8763"W	0.25	
2838.00	9.020	85.870	2831.24	-0.07	6.04	90.48	40°15'46.9579"N	104°31'59.6841"W	0.48	
2933.00	8.520	83.990	2925.13	-0.39	7.31	104.91	40°15'46.9690"N	104°31'59.4978"W	0.61	
3027.00	9.160	84.820	3018.01	-0.84	8.72	119.29	40°15'46.9813"N	104°31'59.3122"W	0.69	
3121.00	8.430	86.650	3110.90	-0.97	9.80	133.62	40°15'46.9904"N	104°31'59.1272"W	0.83	
3216.00	8.690	85.710	3204.85	-0.99	10.74	147.72	40°15'46.9982"N	104°31'58.9451"W	0.31	
3311.00	8.660	86.380	3298.76	-1.03	11.73	162.02	40°15'47.0064"N	104°31'58.7605"W	0.11	
3405.00	8.530	85.630	3391.70	-1.09	12.71	176.03	40°15'47.0146"N	104°31'58.5797"W	0.18	
3500.00	8.630	87.520	3485.64	-1.00	13.55	190.18	40°15'47.0214"N	104°31'58.3971"W	0.31	
3594.00	8.670	88.150	3578.57	-0.60	14.08	204.31	40°15'47.0252"N	104°31'58.2148"W	0.11	
3689.00	8.650	87.720	3672.49	-0.17	14.60	218.60	40°15'47.0287"N	104°31'58.0303"W	0.07	
3783.00	9.520	83.490	3765.31	-0.36	15.76	233.39	40°15'47.0386"N	104°31'57.8394"W	1.17	
3878.00	9.440	83.490	3859.01	-1.10	17.54	248.93	40°15'47.0545"N	104°31'57.6387"W	0.08	
3973.00	9.530	83.890	3952.71	-1.80	19.26	264.49	40°15'47.0698"N	104°31'57.4377"W	0.12	
4067.00	9.520	83.280	4045.42	-2.51	20.99	279.95	40°15'47.0853"N	104°31'57.2381"W	0.11	
4161.00	9.280	84.470	4138.16	-3.14	22.63	295.22	40°15'47.0999"N	104°31'57.0410"W	0.33	



Actual Wellpath Report  
GUTTERSEN D10-725 AWP  
Page 3 of 7



REFERENCE WELLPATH IDENTIFICATION			
Operator	NOBLE ENERGY, INC	Well	GUTTERSEN D10-725
Field	WELD COUNTY (NOBLE NAD 83 GRID)	API/Legal	
Facility	SEC.34-T04N-R64W	Wellbore	GUTTERSEN D10-725 AWB
Slot	SLOT#16 GUTTERSEN D10-725 (465' FSL & 1648' FEL, SEC.34)		

WELLPATH DATA (180 stations)										
MD [ft]	Inclination [°]	Azimuth [°]	TVD [ft]	Vert Sect [ft]	North [ft]	East [ft]	Latitude	Longitude	DLS [°/100ft]	Comments
4256.00	9.240	84.790	4231.92	-3.57	24.07	310.43	40°15'47.1123"N	104°31'56.8445"W	0.07	
4350.00	9.470	84.290	4324.67	-4.02	25.52	325.65	40°15'47.1251"N	104°31'56.6481"W	0.26	
4444.00	9.270	84.660	4417.41	-4.49	26.99	340.88	40°15'47.1380"N	104°31'56.4514"W	0.22	
4539.00	9.290	84.960	4511.17	-4.87	28.38	356.13	40°15'47.1501"N	104°31'56.2544"W	0.06	
4633.00	9.370	84.360	4603.93	-5.28	29.80	371.31	40°15'47.1624"N	104°31'56.0585"W	0.13	
4728.00	9.310	85.000	4697.67	-5.70	31.23	386.66	40°15'47.1749"N	104°31'55.8603"W	0.13	
4823.00	9.370	84.420	4791.41	-6.10	32.65	402.01	40°15'47.1873"N	104°31'55.6621"W	0.12	
4917.00	9.470	82.960	4884.14	-6.79	34.34	417.30	40°15'47.2024"N	104°31'55.4646"W	0.28	
5011.00	9.370	82.740	4976.87	-7.69	36.26	432.57	40°15'47.2196"N	104°31'55.2674"W	0.11	
5106.00	9.300	83.310	5070.61	-8.55	38.13	447.86	40°15'47.2365"N	104°31'55.0699"W	0.12	
5200.00	9.270	83.440	5163.38	-9.31	39.88	462.93	40°15'47.2521"N	104°31'54.8753"W	0.04	
5294.00	9.250	83.220	5256.16	-10.07	41.63	477.95	40°15'47.2679"N	104°31'54.6813"W	0.04	
5389.00	9.250	83.400	5349.92	-10.85	43.41	493.12	40°15'47.2838"N	104°31'54.4854"W	0.03	
5483.00	9.210	84.190	5442.71	-11.48	45.04	508.11	40°15'47.2983"N	104°31'54.2919"W	0.14	
5578.00	9.240	83.420	5536.48	-12.13	46.69	523.25	40°15'47.3129"N	104°31'54.0963"W	0.13	
5672.00	9.210	83.830	5629.26	-12.81	48.36	538.22	40°15'47.3278"N	104°31'53.9029"W	0.08	
5861.00	9.210	84.060	5815.82	-14.01	51.55	568.30	40°15'47.3561"N	104°31'53.5145"W	0.02	
5956.00	9.190	85.850	5909.60	-14.35	52.89	583.43	40°15'47.3677"N	104°31'53.3192"W	0.30	
6050.00	10.150	112.890	6002.31	-10.68	50.21	598.56	40°15'47.3396"N	104°31'53.1244"W	4.89	
6145.00	16.150	133.680	6094.83	2.83	37.81	615.85	40°15'47.2152"N	104°31'52.9032"W	7.95	
6239.00	20.180	154.540	6184.22	27.56	14.11	632.30	40°15'46.9792"N	104°31'52.6943"W	8.07	
6334.00	26.220	160.700	6271.51	63.05	-20.53	646.29	40°15'46.6354"N	104°31'52.5187"W	6.84	
6428.00	34.120	164.000	6352.72	108.90	-65.55	660.45	40°15'46.1891"N	104°31'52.3425"W	8.58	
6523.00	42.090	163.030	6427.41	166.03	-121.70	677.11	40°15'45.6324"N	104°31'52.1354"W	8.41	
6617.00	49.320	165.860	6493.02	231.86	-186.49	695.04	40°15'44.9903"N	104°31'51.9133"W	7.99	
6712.00	57.380	173.030	6549.73	307.43	-261.32	708.73	40°15'44.2494"N	104°31'51.7473"W	10.41	
6806.00	64.890	179.310	6595.11	389.63	-343.35	714.06	40°15'43.4383"N	104°31'51.6902"W	9.90	
6900.00	73.200	180.900	6628.70	477.13	-431.05	713.86	40°15'42.5717"N	104°31'51.7050"W	8.98	
6995.00	79.130	178.960	6651.41	569.13	-523.25	713.99	40°15'41.6606"N	104°31'51.7163"W	6.55	
7089.00	86.580	180.230	6663.09	662.17	-616.45	714.64	40°15'40.7396"N	104°31'51.7211"W	8.04	
7184.00	89.600	179.430	6666.26	756.92	-711.38	714.93	40°15'39.8015"N	104°31'51.7308"W	3.29	
7278.00	89.820	179.420	6666.74	850.77	-805.38	715.87	40°15'38.8726"N	104°31'51.7319"W	0.23	
7373.00	89.850	180.420	6667.01	945.58	-900.38	716.00	40°15'37.9339"N	104°31'51.7436"W	1.05	
7467.00	89.970	179.950	6667.16	1039.35	-994.38	715.70	40°15'37.0051"N	104°31'51.7607"W	0.52	
7562.00	90.250	179.670	6666.97	1134.16	-1089.38	716.01	40°15'36.0664"N	104°31'51.7701"W	0.42	
7656.00	89.940	182.230	6666.82	1227.84	-1183.35	714.45	40°15'35.1379"N	104°31'51.8034"W	2.74	
7751.00	89.570	179.950	6667.22	1322.49	-1278.33	712.65	40°15'34.1996"N	104°31'51.8401"W	2.43	
7845.00	89.450	179.820	6668.03	1416.29	-1372.33	712.84	40°15'33.2708"N	104°31'51.8509"W	0.19	
7940.00	90.110	180.940	6668.39	1511.04	-1467.32	712.21	40°15'32.3322"N	104°31'51.8724"W	1.37	
8034.00	89.710	180.510	6668.54	1604.75	-1561.31	711.02	40°15'31.4035"N	104°31'51.9010"W	0.62	
8129.00	89.830	180.090	6668.92	1699.51	-1656.31	710.52	40°15'30.4649"N	104°31'51.9208"W	0.46	
8223.00	90.200	179.370	6668.90	1793.33	-1750.31	710.96	40°15'29.5360"N	104°31'51.9283"W	0.86	
8318.00	90.110	180.370	6668.64	1888.14	-1845.31	711.18	40°15'28.5973"N	104°31'51.9390"W	1.06	
8412.00	89.980	180.350	6668.57	1981.89	-1939.31	710.59	40°15'27.6685"N	104°31'51.9598"W	0.14	
8507.00	90.170	180.340	6668.44	2076.65	-2034.30	710.02	40°15'26.7299"N	104°31'51.9806"W	0.20	



Actual Wellpath Report  
GUTTERSEN D10-725 AWP  
Page 4 of 7



REFERENCE WELLPATH IDENTIFICATION			
Operator	NOBLE ENERGY, INC	Well	GUTTERSEN D10-725
Field	WELD COUNTY (NOBLE NAD 83 GRID)	API/Legal	
Facility	SEC.34-T04N-R64W	Wellbore	GUTTERSEN D10-725 AWB
Slot	SLOT#16 GUTTERSEN D10-725 (465' FSL & 1648' FEL, SEC.34)		

WELLPATH DATA (180 stations)										
MD [ft]	Inclination [°]	Azimuth [°]	TVD [ft]	Vert Sect [ft]	North [ft]	East [ft]	Latitude	Longitude	DLS [°/100ft]	Comments
8601.00	90.070	180.930	6668.25	2170.37	-2128.30	708.97	40°15'25.8012"N	104°31'52.0073"W	0.64	
8696.00	90.070	180.370	6668.13	2265.08	-2223.29	707.90	40°15'24.8627"N	104°31'52.0346"W	0.59	
8790.00	90.040	180.160	6668.04	2358.85	-2317.29	707.46	40°15'23.9339"N	104°31'52.0534"W	0.23	
8885.00	90.260	180.310	6667.79	2453.62	-2412.29	707.07	40°15'22.9952"N	104°31'52.0718"W	0.28	
8980.00	90.440	179.260	6667.21	2548.43	-2507.28	707.43	40°15'22.0565"N	104°31'52.0806"W	1.12	
9074.00	89.280	179.780	6667.44	2642.27	-2601.28	708.22	40°15'21.1276"N	104°31'52.0837"W	1.35	
9168.00	90.260	182.050	6667.82	2735.95	-2695.26	706.71	40°15'20.1992"N	104°31'52.1163"W	2.63	
9263.00	90.080	182.150	6667.54	2830.45	-2790.19	703.23	40°15'19.2614"N	104°31'52.1746"W	0.22	
9358.00	90.110	182.140	6667.38	2924.94	-2885.13	699.68	40°15'18.3238"N	104°31'52.2338"W	0.03	
9452.00	90.080	181.990	6667.22	3018.45	-2979.07	696.29	40°15'17.3959"N	104°31'52.2907"W	0.16	
9546.00	90.040	180.750	6667.12	3112.07	-3073.04	694.04	40°15'16.4676"N	104°31'52.3330"W	1.32	
9640.00	89.830	182.260	6667.23	3205.67	-3167.00	691.57	40°15'15.5394"N	104°31'52.3780"W	1.62	
9735.00	89.950	181.160	6667.41	3300.24	-3261.96	688.74	40°15'14.6014"N	104°31'52.4280"W	1.16	
9830.00	90.040	180.430	6667.42	3394.93	-3356.95	687.42	40°15'13.6629"N	104°31'52.4584"W	0.77	
9924.00	89.490	180.240	6667.81	3488.69	-3450.95	686.87	40°15'12.7341"N	104°31'52.4787"W	0.62	
10018.00	89.890	181.010	6668.31	3582.41	-3544.94	685.85	40°15'11.8055"N	104°31'52.5052"W	0.92	
10113.00	90.140	180.340	6668.29	3677.12	-3639.93	684.73	40°15'10.8669"N	104°31'52.5330"W	0.75	
10207.00	90.540	179.890	6667.73	3770.90	-3733.93	684.54	40°15'9.9381"N	104°31'52.5487"W	0.64	
10301.00	90.810	181.470	6666.62	3864.61	-3827.91	683.42	40°15'9.0096"N	104°31'52.5763"W	1.71	
10396.00	90.410	181.140	6665.61	3959.23	-3922.88	681.26	40°15'8.0714"N	104°31'52.6176"W	0.55	
10490.00	90.350	180.670	6664.99	4052.92	-4016.87	679.78	40°15'7.1428"N	104°31'52.6499"W	0.50	
10585.00	90.200	178.650	6664.53	4147.74	-4111.86	680.34	40°15'6.2041"N	104°31'52.6561"W	2.13	
10679.00	90.320	179.640	6664.11	4241.61	-4205.85	681.74	40°15'5.2753"N	104°31'52.6512"W	1.06	
10774.00	90.540	179.270	6663.39	4336.46	-4300.84	682.65	40°15'4.3365"N	104°31'52.6529"W	0.45	
10869.00	90.290	179.780	6662.71	4431.30	-4395.83	683.43	40°15'3.3978"N	104°31'52.6562"W	0.60	
10963.00	90.320	179.850	6662.21	4525.11	-4489.83	683.74	40°15'2.4689"N	104°31'52.6655"W	0.08	
11058.00	90.290	179.880	6661.70	4619.92	-4584.83	683.96	40°15'1.5302"N	104°31'52.6760"W	0.04	
11152.00	89.980	179.610	6661.48	4713.74	-4678.83	684.38	40°15'0.6013"N	104°31'52.6838"W	0.44	
11247.00	90.140	180.050	6661.38	4808.55	-4773.83	684.66	40°14'59.6626"N	104°31'52.6936"W	0.49	
11436.00	90.040	179.450	6661.08	4997.20	-4962.83	685.48	40°14'57.7949"N	104°31'52.7096"W	0.32	
11531.00	90.170	180.160	6660.91	5092.01	-5057.82	685.81	40°14'56.8562"N	104°31'52.7188"W	0.76	
11625.00	90.110	179.930	6660.68	5185.80	-5151.82	685.73	40°14'55.9274"N	104°31'52.7330"W	0.25	
11720.00	90.200	180.100	6660.42	5280.59	-5246.82	685.71	40°14'54.9886"N	104°31'52.7467"W	0.20	
11814.00	90.010	179.430	6660.25	5374.41	-5340.82	686.10	40°14'54.0598"N	104°31'52.7550"W	0.74	
11909.00	90.480	179.420	6659.84	5469.26	-5435.82	687.05	40°14'53.1210"N	104°31'52.7561"W	0.49	
12003.00	90.230	180.040	6659.26	5563.08	-5529.81	687.49	40°14'52.1921"N	104°31'52.7636"W	0.71	
12098.00	90.110	180.220	6658.98	5657.86	-5624.81	687.28	40°14'51.2535"N	104°31'52.7798"W	0.23	
12192.00	90.320	180.240	6658.63	5751.63	-5718.81	686.90	40°14'50.3247"N	104°31'52.7979"W	0.22	
12287.00	90.290	179.650	6658.12	5846.43	-5813.81	686.99	40°14'49.3859"N	104°31'52.8101"W	0.62	
12381.00	90.380	179.650	6657.57	5940.26	-5907.81	687.56	40°14'48.4571"N	104°31'52.8159"W	0.10	
12476.00	90.170	180.290	6657.11	6035.06	-6002.80	687.61	40°14'47.5184"N	104°31'52.8286"W	0.71	
12571.00	90.140	181.110	6656.86	6129.77	-6097.80	686.45	40°14'46.5798"N	104°31'52.8570"W	0.86	
12665.00	90.380	180.440	6656.43	6223.47	-6191.79	685.18	40°14'45.6512"N	104°31'52.8866"W	0.76	
12760.00	89.670	181.540	6656.39	6318.14	-6286.77	683.54	40°14'44.7129"N	104°31'52.9212"W	1.38	
12855.00	90.070	182.300	6656.61	6412.67	-6381.72	680.36	40°14'43.7750"N	104°31'52.9756"W	0.90	





Actual Wellpath Report  
GUTTERSEN D10-725 AWP  
Page 5 of 7



REFERENCE WELLPATH IDENTIFICATION			
Operator	NOBLE ENERGY, INC	Well	GUTTERSEN D10-725
Field	WELD COUNTY (NOBLE NAD 83 GRID)	API/Legal	
Facility	SEC.34-T04N-R64W	Wellbore	GUTTERSEN D10-725 AWB
Slot	SLOT#16 GUTTERSEN D10-725 (465' FSL & 1648' FEL, SEC.34)		

WELLPATH DATA (180 stations) † = interpolated, ‡ = extrapolated station										
MD [ft]	Inclination [°]	Azimuth [°]	TVD [ft]	Vert Sect [ft]	North [ft]	East [ft]	Latitude	Longitude	DLS [°/100ft]	Comments
12949.00	90.170	182.970	6656.41	6506.08	-6475.62	676.04	40°14'42.8476"N	104°31'53.0445"W	0.72	
13044.00	90.350	183.070	6655.98	6600.41	-6570.48	671.03	40°14'41.9108"N	104°31'53.1224"W	0.22	
13139.00	90.230	182.120	6655.50	6694.82	-6665.38	666.73	40°14'40.9735"N	104°31'53.1913"W	1.01	
13233.00	90.380	183.060	6655.00	6788.24	-6759.28	662.48	40°14'40.0461"N	104°31'53.2593"W	1.01	
13328.00	89.980	178.310	6654.70	6882.92	-6854.25	661.35	40°14'39.1078"N	104°31'53.2873"W	5.02	
13422.00	90.320	179.160	6654.45	6976.83	-6948.22	663.42	40°14'38.1790"N	104°31'53.2738"W	0.97	
13611.00	89.980	178.830	6653.96	7165.61	-7137.19	666.74	40°14'36.3113"N	104°31'53.2576"W	0.25	
13706.00	90.170	178.760	6653.83	7260.51	-7232.17	668.73	40°14'35.3726"N	104°31'53.2453"W	0.21	
13801.00	90.260	178.830	6653.48	7355.42	-7327.15	670.73	40°14'34.4339"N	104°31'53.2329"W	0.12	
13895.00	90.200	178.940	6653.10	7449.32	-7421.13	672.56	40°14'33.5050"N	104°31'53.2225"W	0.13	
13990.00	90.170	178.580	6652.79	7544.22	-7516.11	674.62	40°14'32.5663"N	104°31'53.2094"W	0.38	
14085.00	89.950	179.130	6652.69	7639.12	-7611.09	676.52	40°14'31.6276"N	104°31'53.1983"W	0.62	
14179.00	89.800	180.010	6652.90	7732.96	-7705.09	677.22	40°14'30.6987"N	104°31'53.2024"W	0.95	
14273.00	90.110	180.610	6652.97	7826.72	-7799.09	676.71	40°14'29.7699"N	104°31'53.2222"W	0.72	
14368.00	90.040	179.670	6652.85	7921.50	-7894.08	676.48	40°14'28.8312"N	104°31'53.2386"W	0.99	
14463.00	89.920	180.340	6652.88	8016.29	-7989.08	676.47	40°14'27.8925"N	104°31'53.2521"W	0.72	
14557.00	90.140	178.980	6652.83	8110.12	-8083.08	677.03	40°14'26.9637"N	104°31'53.2581"W	1.47	
14652.00	89.920	178.210	6652.78	8205.04	-8178.05	679.36	40°14'26.0250"N	104°31'53.2415"W	0.84	
14746.00	90.260	178.810	6652.63	8298.96	-8272.02	681.80	40°14'25.0962"N	104°31'53.2232"W	0.73	
14841.00	90.140	178.180	6652.30	8393.89	-8366.98	684.30	40°14'24.1575"N	104°31'53.2044"W	0.68	
14936.00	89.920	178.370	6652.25	8488.82	-8461.94	687.16	40°14'23.2189"N	104°31'53.1809"W	0.31	
15030.00	90.200	177.770	6652.15	8582.77	-8555.89	690.32	40°14'22.2903"N	104°31'53.1533"W	0.70	
15125.00	89.890	178.880	6652.08	8677.71	-8650.84	693.10	40°14'21.3516"N	104°31'53.1309"W	1.21	
15219.00	89.980	178.830	6652.19	8771.61	-8744.83	694.98	40°14'20.4228"N	104°31'53.1199"W	0.11	
15314.00	90.230	176.990	6652.01	8866.56	-8839.76	698.44	40°14'19.4844"N	104°31'53.0886"W	1.95	
15409.00	90.230	179.190	6651.63	8961.51	-8934.70	701.61	40°14'18.5459"N	104°31'53.0611"W	2.32	
15503.00	90.570	178.790	6650.97	9055.40	-9028.68	703.27	40°14'17.6170"N	104°31'53.0530"W	0.56	
15598.00	90.470	178.510	6650.11	9150.31	-9123.65	705.50	40°14'16.6784"N	104°31'53.0375"W	0.31	
15692.00	90.380	178.640	6649.41	9244.22	-9217.62	707.84	40°14'15.7496"N	104°31'53.0206"W	0.17	
15787.00	90.380	178.300	6648.78	9339.15	-9312.58	710.38	40°14'14.8109"N	104°31'53.0013"W	0.36	
15976.00	89.920	179.910	6648.29	9527.90	-9501.55	713.33	40°14'12.9433"N	104°31'52.9899"W	0.89	
16070.00	90.260	178.770	6648.14	9621.76	-9595.54	714.41	40°14'12.0145"N	104°31'52.9891"W	1.27	
16164.00	90.690	178.900	6647.36	9715.66	-9689.52	716.32	40°14'11.0856"N	104°31'52.9777"W	0.48	
16259.00	90.350	179.770	6646.50	9810.52	-9784.51	717.43	40°14'10.1469"N	104°31'52.9769"W	0.98	
16353.00	90.570	179.040	6645.75	9904.37	-9878.50	718.40	40°14'9.2180"N	104°31'52.9775"W	0.81	
16448.00	90.720	179.100	6644.68	9999.24	-9973.48	719.95	40°14'8.2793"N	104°31'52.9710"W	0.17	
16542.00	90.630	179.060	6643.57	10093.12	-10067.46	721.45	40°14'7.3505"N	104°31'52.9648"W	0.10	
16636.00	90.200	179.380	6642.89	10186.99	-10161.45	722.73	40°14'6.4216"N	104°31'52.9616"W	0.57	
16731.00	90.320	179.640	6642.46	10281.83	-10256.45	723.55	40°14'5.4829"N	104°31'52.9645"W	0.30	
16825.00	90.780	178.270	6641.55	10375.72	-10350.43	725.26	40°14'4.5541"N	104°31'52.9556"W	1.54	
16920.00	90.510	179.050	6640.48	10470.63	-10445.39	727.48	40°14'3.6154"N	104°31'52.9403"W	0.87	
17109.00	90.290	178.920	6639.17	10659.40	-10634.36	730.83	40°14'1.7478"N	104°31'52.9238"W	0.14	
17203.00	90.690	179.900	6638.36	10753.25	-10728.35	731.80	40°14'0.8190"N	104°31'52.9245"W	1.13	
17297.00	90.570	180.110	6637.33	10847.04	-10822.34	731.79	40°13'59.8902"N	104°31'52.9379"W	0.26	Last BH MWD Survey
17329.00†	90.570	180.110	6637.01	10878.97	-10854.34	731.73	40°13'59.5740"N	104°31'52.9432"W	0.00	Projection to Bit



Actual Wellpath Report

GUTTERSEN D10-725 AWP

Page 6 of 7



REFERENCE WELLPATH IDENTIFICATION			
Operator	NOBLE ENERGY, INC	Well	GUTTERSEN D10-725
Field	WELD COUNTY (NOBLE NAD 83 GRID)	API/Legal	
Facility	SEC.34-T04N-R64W	Wellbore	GUTTERSEN D10-725 AWB
Slot	SLOT#16 GUTTERSEN D10-725 (465' FSL & 1648' FEL, SEC.34)		

TARGETS								
Name	TVD [ft]	North [ft]	East [ft]	Grid East [US ft]	Grid North [US ft]	Latitude	Longitude	Shape
GUTTERSEN D10-745 SECTION 10	0.00	-0.73	-66.98	3269632.26	1340132.30	40°15'46.9080"N	104°32'1.7160"W	polygon
	2D Polygon: dimensions not calculated							
GUTTERSEN D10-745 SECTION 3	0.00	-0.73	-66.98	3269632.26	1340132.30	40°15'46.9080"N	104°32'1.7160"W	polygon
	2D Polygon: dimensions not calculated							
GUTTERSEN D10-725 REV-1 BHL (200'FSL&1002'FEL,SEC10)	6642.00	-10855.50	716.45	3270415.65	1329278.02	40°13'59.5642"N	104°31'53.1403"W	point
GUTTERSEN D10-725 REV-1 TARGET	6657.12	-6856.26	687.96	3270387.16	1333277.08	40°14'39.0851"N	104°31'52.9444"W	point
GUTTERSEN D10-725 LP/TPZ REV-1 (200'FNL&953'FEL,SEC.3)	6666.00	-656.31	698.31	3270397.51	1339476.75	40°15'40.3475"N	104°31'51.9374"W	point

WELLPATH COMPOSITION - Ref Wellbore: GUTTERSEN D10-725 AWB      Ref Wellpath: GUTTERSEN D10-725 AWP					
Start MD [ft]	End MD [ft]	Positional Uncertainty Model	Log Name/Comment	Wellbore	Survey Date
0.00	1929.00	Gyrodata 2015 - GC+DROP+COND	Surface Gyros -Gyrodata 2015 - GC+DROP+COND	GUTTERSEN D10-725 AWB	2/9/2022
1929.00	17329.00	OWSG MWD rev2 (MS+IFR1)	8.5" OWSG MWD rev2 (MS+IFR1) <1988'-17297'>	GUTTERSEN D10-725 AWB	2/11/2022



Actual Wellpath Report  
GUTTERSEN D10-725 AWP  
Page 7 of 7



REFERENCE WELLPATH IDENTIFICATION			
Operator	NOBLE ENERGY, INC	Well	GUTTERSEN D10-725
Field	WELD COUNTY (NOBLE NAD 83 GRID)	API/Legal	
Facility	SEC.34-T04N-R64W	Wellbore	GUTTERSEN D10-725 AWB
Slot	SLOT#16 GUTTERSEN D10-725 (465' FSL & 1648' FEL, SEC.34)		

WELLPATH COMMENTS				
MD [ft]	Inclination [°]	Azimuth [°]	TVD [ft]	Comment
1929.00	0.330	203.460	1928.96	Last Gyro Survey
1988.00	0.500	112.540	1987.96	First BH MWD Survey
17297.00	90.570	180.110	6637.33	Last BH MWD Survey
17329.00	90.570	180.110	6637.01	Projection to Bit