

NOBLE ENERGY, INC



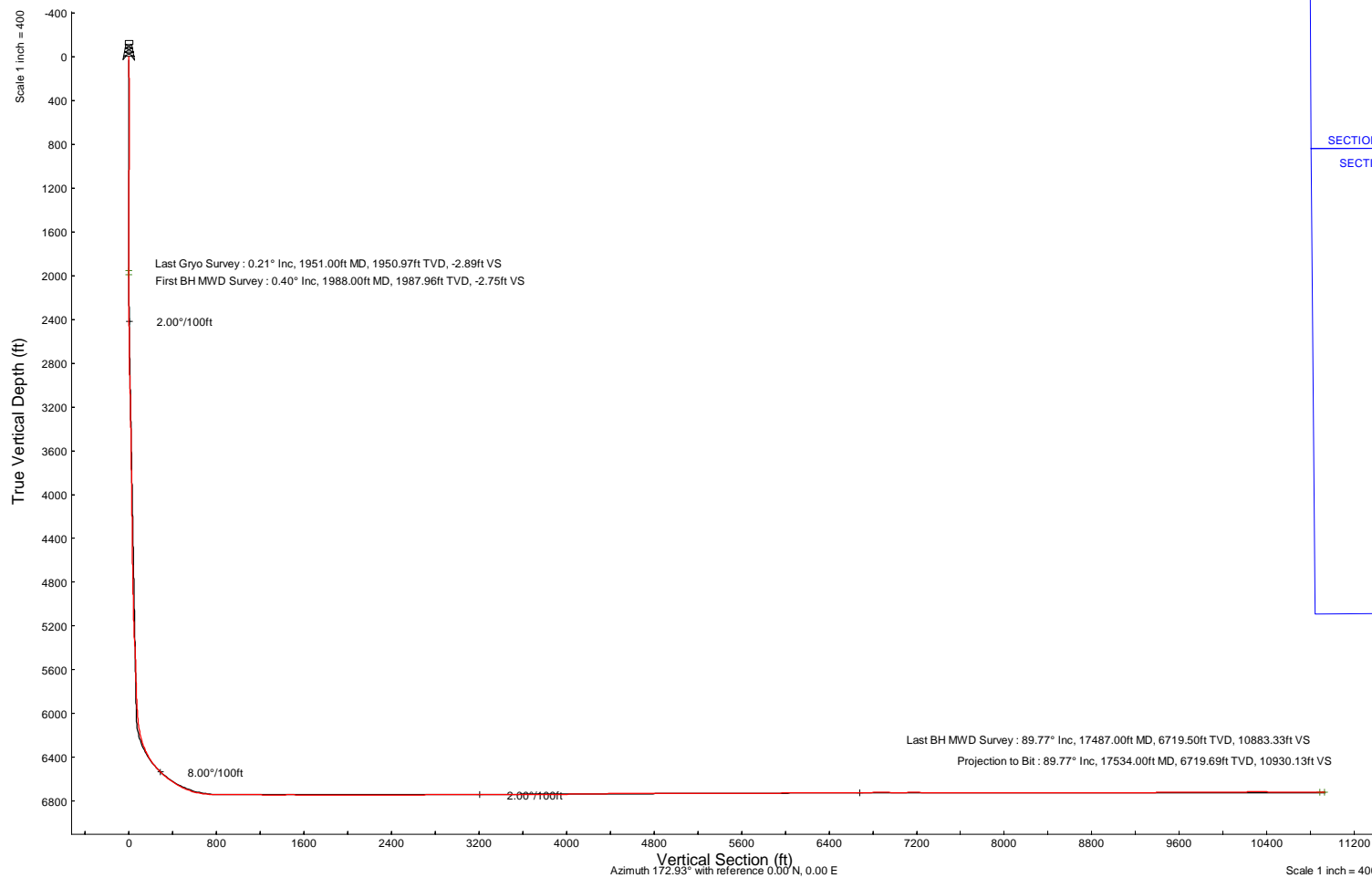
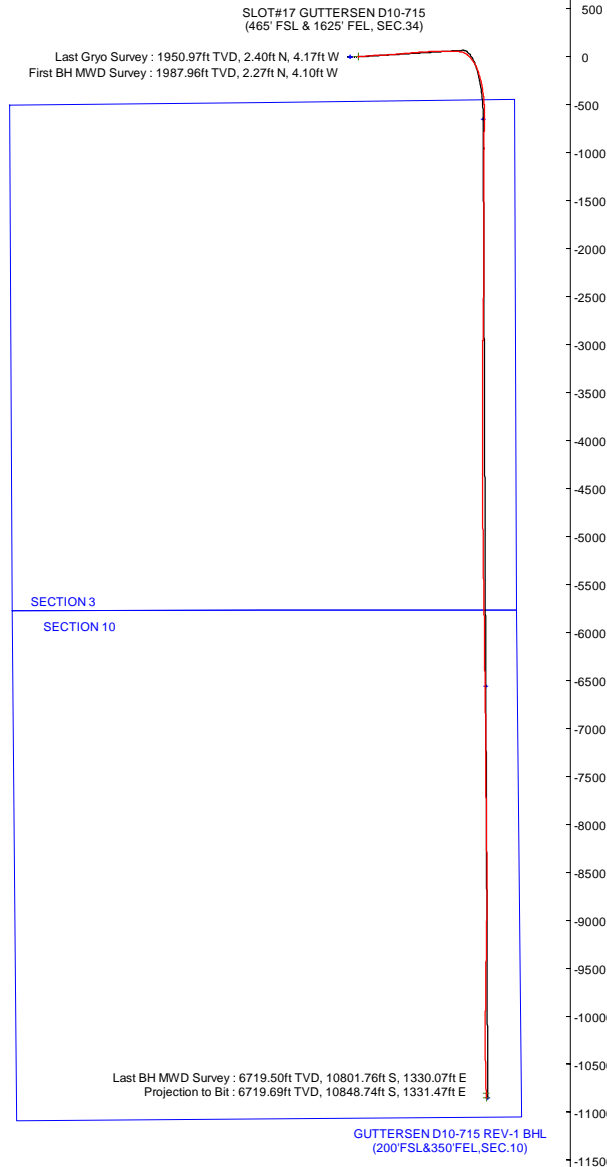
Location: COLORADO Slot: SLOT#17 GUTTERSEN D10-715 (465' FSL & 1625' FEL, SEC.34)
 Field: WELD COUNTY (NOBLE NAD 83 GRID) Well: GUTTERSEN D10-715
 Facility: SEC.34-T04N-R64W Wellbore: GUTTERSEN D10-715 PWB

Plot reference wellpath is GUTTERSEN D10-715 (REV-A.0) PWP Grid System: NAD83 / Lambert Colorado SP, Northern Zone (501), US feet
 True vertical depths are referenced to H&P 517 (30KB) (RKB) North Reference: Grid north
 Reference wellpath measured depths are referenced to H&P 517 (30KB) (RKB) Scale: True distance
 H&P 517 (30KB) (RKB) to Mean Sea Level: 4727 feet Coordinates are in feet referenced to Slot
 Mean Sea Level to Ground level (At Slot: SLOT#17 GUTTERSEN D10-715 (465' FSL & 1625' FEL, SEC.34)): 0 feet Depths are in feet
 Offset wellpath MDs are referenced to each path's default MD datum Created by: guenaler on 2022-04-06; Database: WA_Denver

Location Information

Facility Name				Grid East (US ft)	Grid North (US ft)	Latitude	Longitude
SEC.34-T04N-R64W				3268299.973	1340227.112	40°15'47.9880"N	104°32'18.8880"W
Slot		Local N (ft)	Local E (ft)	Grid East (US ft)	Grid North (US ft)	Latitude	Longitude
SLOT#17 GUTTERSEN D10-715 (465' FSL & 1625' FEL, SEC.34)		-93.84	1421.65	3269721.556	1340133.273	40°15'46.9080"N	104°32'0.5640"W
H&P 517 (30KB) (RKB) to Ground level (At Slot: SLOT#17 GUTTERSEN D10-715 (465' FSL & 1625' FEL, SEC.34))							4727ft
Mean Sea Level to Ground level (At Slot: SLOT#17 GUTTERSEN D10-715 (465' FSL & 1625' FEL, SEC.34))							0ft
H&P 517 (30KB) (RKB) to Mean Sea Level							4727ft

Scale 1 inch = 500 Easting (ft)



Scale 1 inch = 400

REFERENCE WELLPATH IDENTIFICATION			
Operator	NOBLE ENERGY, INC	Well	GUTTERSEN D10-715
Field	WELD COUNTY (NOBLE NAD 83 GRID)	API/Legal	
Facility	SEC.34-T04N-R64W	Wellbore	GUTTERSEN D10-715 AWB
Slot	SLOT#17 GUTTERSEN D10-715 (465' FSL & 1625' FEL, SEC.34)		

REPORT SETUP INFORMATION			
Projection System	NAD83 / Lambert Colorado SP, Northern Zone (501), US feet	Software System	WellArchitect® 6.0
North Reference	Grid	User	Guenaler
Scale	0.999957	Report Generated	4/6/2022 at 9:54:58 AM
Convergence at slot	0.62° East	Database	WA_Denver

WELLPATH LOCATION						
	Local coordinates		Grid coordinates		Geographic coordinates	
	North[ft]	East[ft]	Easting[US ft]	Northing[US ft]	Latitude	Longitude
Slot Location	-93.84	1421.65	3269721.56	1340133.27	40°15'46.9080"N	104°32'0.5640"W
Facility Reference Pt			3268299.97	1340227.11	40°15'47.9880"N	104°32'18.8880"W
Field Reference Pt			3000000.00	4454105.15	48°46'34.3150"N	105°30'0.0000"W

WELLPATH DATUM			
Calculation method	Minimum curvature	H&P 517 (30'KB) (RKB) to Facility Vertical Datum	4727.00ft
Horizontal Reference Pt	Slot	H&P 517 (30'KB) (RKB) to Mean Sea Level	4727.00ft
Vertical Reference Pt	H&P 517 (30'KB) (RKB)	H&P 517 (30'KB) (RKB) to Ground Level at Slot (SLOT#17 GUTTERSEN D10-715 (465' FSL & 1625' FEL, SEC.34))	4727.00ft
MD Reference Pt	H&P 517 (30'KB) (RKB)	Section Origin	N 0.00, E 0.00 ft
Field Vertical Reference	Mean Sea Level	Section Azimuth	172.93°

REFERENCE WELLPATH IDENTIFICATION			
Operator	NOBLE ENERGY, INC	Well	GUTTERSEN D10-715
Field	WELD COUNTY (NOBLE NAD 83 GRID)	API/Legal	
Facility	SEC.34-T04N-R64W	Wellbore	GUTTERSEN D10-715 AWB
Slot	SLOT#17 GUTTERSEN D10-715 (465' FSL & 1625' FEL, SEC.34)		

WELLPATH DATA (173 stations)										
MD [ft]	Inclination [°]	Azimuth [°]	TVD [ft]	Vert Sect [ft]	North [ft]	East [ft]	Latitude	Longitude	DLS [°/100ft]	Comments
0.00	0.000	188.540	0.00	0.00	0.00	0.00	40°15'46.9080"N	104°32'0.5640"W	0.00	
87.07	0.320	188.540	87.07	0.23	-0.24	-0.04	40°15'46.9056"N	104°32'0.5645"W	0.37	
181.22	0.500	129.620	181.22	0.79	-0.76	0.24	40°15'46.9004"N	104°32'0.5610"W	0.46	
272.00	0.100	189.570	272.00	1.15	-1.09	0.53	40°15'46.8971"N	104°32'0.5573"W	0.50	
366.42	0.070	160.630	366.42	1.29	-1.23	0.54	40°15'46.8958"N	104°32'0.5572"W	0.05	
461.07	0.160	211.920	461.07	1.44	-1.40	0.49	40°15'46.8942"N	104°32'0.5579"W	0.14	
555.65	0.640	227.540	555.64	1.85	-1.86	0.03	40°15'46.8896"N	104°32'0.5639"W	0.52	
650.38	0.290	281.390	650.37	2.08	-2.17	-0.60	40°15'46.8866"N	104°32'0.5720"W	0.55	
745.00	0.370	308.590	744.99	1.79	-1.94	-1.07	40°15'46.8890"N	104°32'0.5781"W	0.18	
839.47	0.170	270.730	839.46	1.55	-1.74	-1.45	40°15'46.8909"N	104°32'0.5829"W	0.27	
934.26	0.210	322.330	934.25	1.38	-1.60	-1.70	40°15'46.8923"N	104°32'0.5861"W	0.18	
1028.77	0.450	23.820	1028.76	0.92	-1.13	-1.65	40°15'46.8970"N	104°32'0.5855"W	0.42	
1123.23	0.320	18.550	1123.21	0.36	-0.54	-1.42	40°15'46.9028"N	104°32'0.5824"W	0.14	
1217.59	0.250	23.830	1217.57	-0.05	-0.10	-1.25	40°15'46.9071"N	104°32'0.5801"W	0.08	
1312.12	0.290	344.870	1312.10	-0.47	0.32	-1.23	40°15'46.9113"N	104°32'0.5798"W	0.19	
1406.28	0.330	350.360	1406.26	-0.97	0.82	-1.34	40°15'46.9162"N	104°32'0.5811"W	0.05	
1500.74	0.370	345.530	1500.72	-1.55	1.38	-1.46	40°15'46.9218"N	104°32'0.5826"W	0.05	
1595.28	0.270	325.900	1595.26	-2.05	1.86	-1.66	40°15'46.9266"N	104°32'0.5852"W	0.16	
1689.84	0.620	297.720	1689.81	-2.54	2.28	-2.24	40°15'46.9308"N	104°32'0.5926"W	0.43	
1784.21	0.570	279.410	1784.18	-2.97	2.60	-3.15	40°15'46.9340"N	104°32'0.6043"W	0.21	
1878.69	0.350	250.940	1878.66	-3.04	2.58	-3.89	40°15'46.9339"N	104°32'0.6138"W	0.33	
1951.00	0.210	212.570	1950.97	-2.89	2.40	-4.17	40°15'46.9321"N	104°32'0.6174"W	0.31	Last Gryo Survey
1988.00	0.400	124.320	1987.96	-2.75	2.27	-4.10	40°15'46.9308"N	104°32'0.6166"W	1.21	First BH MWD Survey
2082.00	2.340	91.000	2081.93	-2.27	2.05	-1.91	40°15'46.9284"N	104°32'0.5883"W	2.15	
2177.00	5.160	86.960	2176.72	-1.69	2.24	4.30	40°15'46.9297"N	104°32'0.5083"W	2.98	
2271.00	7.100	87.090	2270.18	-0.97	2.76	14.32	40°15'46.9337"N	104°32'0.3789"W	2.06	
2366.00	8.800	86.800	2364.26	-0.06	3.46	27.44	40°15'46.9393"N	104°32'0.2096"W	1.79	
2460.00	9.500	86.240	2457.07	0.88	4.37	42.36	40°15'46.9466"N	104°32'0.0170"W	0.75	
2555.00	11.000	86.230	2550.55	1.85	5.48	59.23	40°15'46.9558"N	104°31'59.7993"W	1.58	
2650.00	14.930	86.980	2643.11	3.24	6.72	80.50	40°15'46.9658"N	104°31'59.5247"W	4.14	
2744.00	16.890	84.930	2733.50	4.57	8.57	106.20	40°15'46.9812"N	104°31'59.1930"W	2.17	
2839.00	16.610	84.410	2824.47	5.40	11.11	133.46	40°15'47.0034"N	104°31'58.8410"W	0.33	
2933.00	16.290	85.270	2914.62	6.29	13.51	159.97	40°15'47.0242"N	104°31'58.4988"W	0.43	
3027.00	16.840	91.010	3004.73	8.74	14.35	186.72	40°15'47.0297"N	104°31'58.1535"W	1.84	
3122.00	15.920	88.440	3095.87	11.93	14.47	213.51	40°15'47.0279"N	104°31'57.8081"W	1.23	
3216.00	15.690	86.450	3186.32	13.95	15.60	239.08	40°15'47.0364"N	104°31'57.4780"W	0.63	
3405.00	16.370	85.240	3367.97	16.59	19.40	291.13	40°15'47.0683"N	104°31'56.8062"W	0.40	
3594.00	16.200	86.790	3549.39	19.44	23.08	343.99	40°15'47.0990"N	104°31'56.1237"W	0.25	
3689.00	16.510	84.830	3640.55	20.78	25.04	370.67	40°15'47.1155"N	104°31'55.7794"W	0.67	
3784.00	16.520	85.130	3731.63	21.75	27.40	397.57	40°15'47.1359"N	104°31'55.4321"W	0.09	
3878.00	16.380	85.550	3821.78	22.87	29.57	424.10	40°15'47.1545"N	104°31'55.0896"W	0.20	
3973.00	16.340	85.180	3912.93	24.01	31.73	450.77	40°15'47.1729"N	104°31'54.7452"W	0.12	
4067.00	16.490	85.350	4003.10	25.09	33.92	477.25	40°15'47.1917"N	104°31'54.4035"W	0.17	
4161.00	16.270	85.590	4093.29	26.27	36.02	503.67	40°15'47.2096"N	104°31'54.0623"W	0.24	
4256.00	16.390	85.280	4184.45	27.44	38.14	530.30	40°15'47.2277"N	104°31'53.7186"W	0.16	

REFERENCE WELLPATH IDENTIFICATION			
Operator	NOBLE ENERGY, INC	Well	GUTTERSEN D10-715
Field	WELD COUNTY (NOBLE NAD 83 GRID)	API/Legal	
Facility	SEC.34-T04N-R64W	Wellbore	GUTTERSEN D10-715 AWB
Slot	SLOT#17 GUTTERSEN D10-715 (465' FSL & 1625' FEL, SEC.34)		

WELLPATH DATA (173 stations)

MD [ft]	Inclination [°]	Azimuth [°]	TVD [ft]	Vert Sect [ft]	North [ft]	East [ft]	Latitude	Longitude	DLS [°/100ft]	Comments
4350.00	16.880	85.030	4274.52	28.48	40.42	557.11	40°15'47.2473"N	104°31'53.3724"W	0.53	
4539.00	16.400	84.970	4455.60	30.44	45.13	611.03	40°15'47.2881"N	104°31'52.6763"W	0.25	
4634.00	16.760	85.630	4546.65	31.56	47.35	638.04	40°15'47.3071"N	104°31'52.3275"W	0.43	
4823.00	16.650	86.750	4727.68	34.65	50.96	692.25	40°15'47.3369"N	104°31'51.6279"W	0.18	
5011.00	16.780	86.590	4907.73	38.18	54.10	746.23	40°15'47.3621"N	104°31'50.9312"W	0.07	
5106.00	16.530	87.060	4998.75	40.03	55.61	773.41	40°15'47.3741"N	104°31'50.5803"W	0.30	
5200.00	16.470	86.730	5088.88	41.88	57.06	800.07	40°15'47.3855"N	104°31'50.2362"W	0.12	
5389.00	14.390	92.200	5271.07	47.44	57.69	850.30	40°15'47.3863"N	104°31'49.5883"W	1.34	
5484.00	15.920	98.850	5362.77	52.92	55.23	874.97	40°15'47.3593"N	104°31'49.2704"W	2.44	
5578.00	16.700	89.930	5453.00	58.10	53.26	901.22	40°15'47.3371"N	104°31'48.9321"W	2.79	
5672.00	16.680	87.490	5543.04	60.82	53.87	928.20	40°15'47.3401"N	104°31'48.5840"W	0.75	
5767.00	16.620	87.010	5634.05	62.87	55.17	955.39	40°15'47.3501"N	104°31'48.2331"W	0.16	
5861.00	16.200	88.770	5724.23	65.16	56.16	981.92	40°15'47.3570"N	104°31'47.8907"W	0.69	
6051.00	14.150	94.420	5907.60	72.49	54.94	1031.59	40°15'47.3395"N	104°31'47.2504"W	1.33	
6145.00	16.140	96.290	5998.33	77.80	52.62	1056.03	40°15'47.3140"N	104°31'46.9354"W	2.18	
6239.00	17.890	103.390	6088.22	85.86	47.84	1083.07	40°15'47.2639"N	104°31'46.5873"W	2.89	
6334.00	18.610	119.290	6178.50	99.96	37.04	1110.50	40°15'47.1542"N	104°31'46.2350"W	5.28	
6428.00	23.830	130.320	6266.13	122.86	17.39	1138.09	40°15'46.9570"N	104°31'45.8819"W	6.97	
6523.00	29.390	139.560	6351.07	156.49	-12.80	1167.88	40°15'46.6554"N	104°31'45.5019"W	7.28	
6618.00	36.260	147.380	6430.89	201.38	-54.27	1198.19	40°15'46.2424"N	104°31'45.1168"W	8.48	
6712.00	43.480	154.810	6503.03	257.30	-107.05	1227.00	40°15'45.7177"N	104°31'44.7527"W	9.19	
6806.00	49.620	161.320	6567.68	323.21	-170.33	1252.27	40°15'45.0897"N	104°31'44.4357"W	8.24	
6900.00	56.100	166.770	6624.43	397.18	-242.33	1272.69	40°15'44.3760"N	104°31'44.1824"W	8.30	
6995.00	63.420	169.870	6672.25	478.92	-322.65	1289.21	40°15'43.5806"N	104°31'43.9807"W	8.20	
7089.00	72.130	173.490	6707.78	565.82	-408.67	1301.71	40°15'42.7293"N	104°31'43.8317"W	9.93	
7184.00	80.760	176.940	6730.04	657.99	-500.60	1309.35	40°15'41.8201"N	104°31'43.7461"W	9.74	
7278.00	88.770	180.820	6738.61	751.00	-594.10	1311.16	40°15'40.8960"N	104°31'43.7360"W	9.46	
7373.00	89.380	180.550	6740.14	845.12	-689.08	1310.02	40°15'39.9576"N	104°31'43.7640"W	0.70	
7467.00	89.600	180.480	6740.98	938.29	-783.07	1309.18	40°15'39.0289"N	104°31'43.7882"W	0.25	
7562.00	89.630	179.710	6741.62	1032.55	-878.07	1309.02	40°15'38.0903"N	104°31'43.8036"W	0.81	
7656.00	89.720	180.050	6742.15	1125.86	-972.06	1309.22	40°15'37.1614"N	104°31'43.8144"W	0.37	
7751.00	89.450	180.290	6742.84	1220.09	-1067.06	1308.94	40°15'36.2228"N	104°31'43.8314"W	0.38	
7845.00	89.780	180.520	6743.47	1313.29	-1161.06	1308.27	40°15'35.2940"N	104°31'43.8533"W	0.43	
7940.00	90.710	180.630	6743.06	1407.45	-1256.05	1307.32	40°15'34.3555"N	104°31'43.8790"W	0.99	
8034.00	89.780	180.730	6742.66	1500.59	-1350.04	1306.20	40°15'33.4268"N	104°31'43.9067"W	1.00	
8129.00	89.200	179.560	6743.51	1594.83	-1445.03	1305.96	40°15'32.4882"N	104°31'43.9232"W	1.37	
8224.00	89.170	179.540	6744.86	1689.18	-1540.02	1306.71	40°15'31.5495"N	104°31'43.9270"W	0.04	
8318.00	89.480	179.500	6745.97	1782.56	-1634.01	1307.50	40°15'30.6207"N	104°31'43.9301"W	0.33	
8413.00	90.150	180.810	6746.27	1876.80	-1729.01	1307.24	40°15'29.6820"N	104°31'43.9468"W	1.55	
8507.00	90.000	180.520	6746.15	1969.94	-1823.00	1306.15	40°15'28.7534"N	104°31'43.9742"W	0.35	
8696.00	90.250	180.490	6745.74	2157.29	-2011.99	1304.48	40°15'26.8861"N	104°31'44.0224"W	0.13	
8790.00	90.030	179.630	6745.51	2250.56	-2105.99	1304.38	40°15'25.9573"N	104°31'44.0369"W	0.94	
8885.00	90.150	179.710	6745.36	2344.91	-2200.99	1304.93	40°15'25.0185"N	104°31'44.0433"W	0.15	
9074.00	90.120	180.390	6744.91	2532.45	-2389.99	1304.77	40°15'23.1510"N	104°31'44.0721"W	0.36	
9169.00	90.830	181.590	6744.13	2626.50	-2484.97	1303.12	40°15'22.2126"N	104°31'44.1067"W	1.47	

REFERENCE WELLPATH IDENTIFICATION

Operator	NOBLE ENERGY, INC	Well	GUTTERSEN D10-715
Field	WELD COUNTY (NOBLE NAD 83 GRID)	API/Legal	
Facility	SEC.34-T04N-R64W	Wellbore	GUTTERSEN D10-715 AWB
Slot	SLOT#17 GUTTERSEN D10-715 (465' FSL & 1625' FEL, SEC.34)		

WELLPATH DATA (173 stations)

MD [ft]	Inclination [°]	Azimuth [°]	TVD [ft]	Vert Sect [ft]	North [ft]	East [ft]	Latitude	Longitude	DLS [°/100ft]	Comments
9263.00	91.450	181.340	6742.26	2719.44	-2578.92	1300.72	40°15'21.2845"N	104°31'44.1509"W	0.71	
9358.00	90.620	180.760	6740.54	2813.47	-2673.89	1298.98	40°15'20.3463"N	104°31'44.1868"W	1.07	
9452.00	90.490	180.780	6739.63	2906.59	-2767.87	1297.72	40°15'19.4177"N	104°31'44.2164"W	0.14	
9547.00	89.850	180.310	6739.35	3000.75	-2862.87	1296.81	40°15'18.4792"N	104°31'44.2414"W	0.84	
9641.00	90.040	180.840	6739.44	3093.91	-2956.86	1295.87	40°15'17.5505"N	104°31'44.2669"W	0.60	
9735.00	90.170	180.800	6739.27	3187.02	-3050.85	1294.53	40°15'16.6219"N	104°31'44.2975"W	0.14	
9830.00	89.770	180.730	6739.32	3281.13	-3145.85	1293.26	40°15'15.6834"N	104°31'44.3273"W	0.43	
9924.00	89.800	179.550	6739.67	3374.39	-3239.84	1293.03	40°15'14.7546"N	104°31'44.3435"W	1.26	
10018.00	90.870	180.960	6739.12	3467.62	-3333.84	1292.61	40°15'13.8259"N	104°31'44.3622"W	1.88	
10113.00	89.860	181.020	6738.51	3561.67	-3428.82	1290.97	40°15'12.8875"N	104°31'44.3968"W	1.07	
10207.00	89.340	180.600	6739.17	3654.78	-3522.81	1289.64	40°15'11.9589"N	104°31'44.4272"W	0.71	
10302.00	89.460	178.980	6740.16	3749.09	-3617.80	1289.99	40°15'11.0202"N	104°31'44.4361"W	1.71	
10396.00	90.600	178.940	6740.11	3842.57	-3711.78	1291.69	40°15'10.0914"N	104°31'44.4274"W	1.21	
10490.00	90.910	179.250	6738.88	3936.02	-3805.76	1293.18	40°15'9.1626"N	104°31'44.4215"W	0.47	
10585.00	91.090	179.930	6737.22	4030.36	-3900.74	1293.86	40°15'8.2239"N	104°31'44.4261"W	0.74	
10680.00	90.600	180.100	6735.82	4124.63	-3995.73	1293.83	40°15'7.2853"N	104°31'44.4399"W	0.55	
10774.00	90.910	179.740	6734.58	4217.92	-4089.72	1293.96	40°15'6.3566"N	104°31'44.4515"W	0.51	
10869.00	90.900	180.330	6733.08	4312.18	-4184.71	1293.91	40°15'5.4180"N	104°31'44.4656"W	0.62	
10963.00	90.660	180.010	6731.80	4405.42	-4278.70	1293.63	40°15'4.4892"N	104°31'44.4825"W	0.43	
11058.00	90.810	179.410	6730.58	4499.75	-4373.69	1294.11	40°15'3.5506"N	104°31'44.4897"W	0.65	
11153.00	90.170	179.620	6729.77	4594.11	-4468.69	1294.91	40°15'2.6118"N	104°31'44.4927"W	0.71	
11247.00	89.770	180.170	6729.82	4687.42	-4562.68	1295.08	40°15'1.6830"N	104°31'44.5038"W	0.72	
11341.00	90.070	179.320	6729.95	4780.75	-4656.68	1295.50	40°15'0.7541"N	104°31'44.5117"W	0.96	
11436.00	90.350	180.950	6729.60	4875.00	-4751.68	1295.28	40°14'59.8154"N	104°31'44.5280"W	1.74	
11531.00	89.460	179.660	6729.76	4969.21	-4846.67	1294.77	40°14'58.8768"N	104°31'44.5479"W	1.65	
11625.00	91.150	178.750	6729.26	5062.64	-4940.66	1296.08	40°14'57.9480"N	104°31'44.5444"W	2.04	
11720.00	89.800	179.070	6728.47	5157.12	-5035.64	1297.88	40°14'57.0093"N	104°31'44.5345"W	1.46	
11909.00	90.500	179.640	6727.97	5344.93	-5224.62	1300.01	40°14'55.1416"N	104°31'44.5337"W	0.48	
12004.00	90.250	179.040	6727.35	5439.33	-5319.61	1301.11	40°14'54.2029"N	104°31'44.5330"W	0.68	
12098.00	90.230	179.560	6726.96	5532.75	-5413.60	1302.26	40°14'53.2740"N	104°31'44.5315"W	0.55	
12193.00	89.490	178.890	6727.19	5627.17	-5508.59	1303.54	40°14'52.3352"N	104°31'44.5283"W	1.05	
12287.00	89.270	178.870	6728.21	5720.66	-5602.57	1305.38	40°14'51.4064"N	104°31'44.5179"W	0.24	
12382.00	89.830	179.670	6728.95	5815.08	-5697.56	1306.59	40°14'50.4677"N	104°31'44.5157"W	1.03	
12476.00	91.400	178.360	6727.95	5908.54	-5791.54	1308.20	40°14'49.5389"N	104°31'44.5082"W	2.18	
12571.00	90.540	179.290	6726.34	6003.02	-5886.50	1310.15	40°14'48.6003"N	104°31'44.4964"W	1.33	
12666.00	90.380	179.170	6725.57	6097.44	-5981.49	1311.43	40°14'47.6616"N	104°31'44.4934"W	0.21	
12760.00	90.410	179.610	6724.93	6190.84	-6075.48	1312.43	40°14'46.7327"N	104°31'44.4938"W	0.47	
12855.00	90.660	179.340	6724.04	6285.22	-6170.47	1313.30	40°14'45.7940"N	104°31'44.4960"W	0.39	
12950.00	90.070	179.260	6723.43	6379.63	-6265.46	1314.46	40°14'44.8552"N	104°31'44.4944"W	0.63	
13044.00	89.800	179.650	6723.54	6473.02	-6359.46	1315.35	40°14'43.9263"N	104°31'44.4961"W	0.50	
13139.00	90.630	178.620	6723.18	6567.46	-6454.44	1316.79	40°14'42.9876"N	104°31'44.4911"W	1.39	
13234.00	90.260	179.230	6722.45	6661.94	-6549.42	1318.57	40°14'42.0488"N	104°31'44.4815"W	0.75	
13328.00	90.540	178.650	6721.79	6755.42	-6643.41	1320.31	40°14'41.1200"N	104°31'44.4723"W	0.69	
13423.00	90.440	180.520	6720.98	6849.77	-6738.39	1321.00	40°14'40.1813"N	104°31'44.4769"W	1.97	
13517.00	89.090	177.830	6721.36	6943.20	-6832.37	1322.35	40°14'39.2525"N	104°31'44.4727"W	3.20	

REFERENCE WELLPATH IDENTIFICATION

Operator	NOBLE ENERGY, INC	Well	GUTTERSEN D10-715
Field	WELD COUNTY (NOBLE NAD 83 GRID)	API/Legal	
Facility	SEC.34-T04N-R64W	Wellbore	GUTTERSEN D10-715 AWB
Slot	SLOT#17 GUTTERSEN D10-715 (465' FSL & 1625' FEL, SEC.34)		

WELLPATH DATA (173 stations) † = interpolated, ‡ = extrapolated station

MD [ft]	Inclination [°]	Azimuth [°]	TVD [ft]	Vert Sect [ft]	North [ft]	East [ft]	Latitude	Longitude	DLS [°/100ft]	Comments
13612.00	90.320	179.350	6721.85	7037.73	-6927.34	1324.69	40°14'38.3139"N	104°31'44.4560"W	2.06	
13707.00	90.320	180.110	6721.32	7132.06	-7022.34	1325.13	40°14'37.3751"N	104°31'44.4636"W	0.80	
13801.00	89.670	179.500	6721.33	7225.38	-7116.33	1325.45	40°14'36.4463"N	104°31'44.4728"W	0.95	
13895.00	89.740	181.110	6721.81	7318.60	-7210.33	1324.95	40°14'35.5176"N	104°31'44.4925"W	1.71	
13990.00	90.040	179.920	6722.00	7412.76	-7305.32	1324.10	40°14'34.5790"N	104°31'44.5169"W	1.29	
14179.00	90.170	179.510	6721.65	7600.44	-7494.32	1325.04	40°14'32.7113"N	104°31'44.5315"W	0.23	
14274.00	89.860	178.770	6721.63	7694.88	-7589.31	1326.47	40°14'31.7726"N	104°31'44.5265"W	0.84	
14368.00	89.610	178.780	6722.06	7788.39	-7683.29	1328.48	40°14'30.8437"N	104°31'44.5139"W	0.27	
14463.00	89.830	179.130	6722.52	7882.86	-7778.27	1330.21	40°14'29.9050"N	104°31'44.5049"W	0.44	
14557.00	90.140	179.400	6722.55	7976.29	-7872.26	1331.41	40°14'28.9761"N	104°31'44.5027"W	0.44	
14652.00	89.610	179.140	6722.76	8070.71	-7967.25	1332.62	40°14'28.0373"N	104°31'44.5005"W	0.62	
14747.00	89.370	180.430	6723.60	8165.02	-8062.25	1332.98	40°14'27.0986"N	104°31'44.5093"W	1.38	
14841.00	89.670	178.630	6724.39	8258.39	-8156.24	1333.75	40°14'26.1698"N	104°31'44.5126"W	1.94	
14936.00	89.740	179.290	6724.88	8352.86	-8251.22	1335.48	40°14'25.2311"N	104°31'44.5038"W	0.70	
15031.00	89.920	178.970	6725.16	8447.31	-8346.21	1336.92	40°14'24.2923"N	104°31'44.4986"W	0.39	
15125.00	89.400	178.210	6725.72	8540.85	-8440.18	1339.23	40°14'23.3635"N	104°31'44.4820"W	0.98	
15220.00	90.260	180.030	6726.00	8635.29	-8535.16	1340.69	40°14'22.4248"N	104°31'44.4766"W	2.12	
15409.00	90.570	180.720	6724.63	8822.69	-8724.15	1339.45	40°14'20.5575"N	104°31'44.5193"W	0.40	
15598.00	90.410	180.790	6723.01	9009.92	-8913.12	1336.96	40°14'18.6904"N	104°31'44.5781"W	0.09	
15693.00	89.580	180.510	6723.02	9104.06	-9008.12	1335.89	40°14'17.7518"N	104°31'44.6054"W	0.92	
15787.00	90.230	180.630	6723.18	9197.22	-9102.11	1334.95	40°14'16.8232"N	104°31'44.6307"W	0.70	
15976.00	90.810	181.130	6721.46	9384.39	-9291.08	1332.05	40°14'14.9562"N	104°31'44.6948"W	0.41	
16070.00	89.980	181.380	6720.82	9477.40	-9385.06	1329.99	40°14'14.0278"N	104°31'44.7346"W	0.92	
16165.00	90.070	179.810	6720.77	9571.55	-9480.05	1329.00	40°14'13.0893"N	104°31'44.7607"W	1.66	
16259.00	90.070	180.570	6720.66	9664.79	-9574.05	1328.69	40°14'12.1605"N	104°31'44.7780"W	0.81	
16353.00	90.260	180.370	6720.39	9757.98	-9668.04	1327.92	40°14'11.2318"N	104°31'44.8012"W	0.29	
16448.00	90.500	181.280	6719.76	9852.07	-9763.03	1326.55	40°14'10.2933"N	104°31'44.8323"W	0.99	
16542.00	90.500	180.900	6718.94	9945.12	-9857.01	1324.76	40°14'9.3649"N	104°31'44.8686"W	0.40	
16636.00	90.570	182.150	6718.06	10038.06	-9950.97	1322.26	40°14'8.4367"N	104°31'44.9141"W	1.33	
16731.00	90.660	181.640	6717.04	10131.89	-10045.91	1319.12	40°14'7.4989"N	104°31'44.9680"W	0.55	
16825.00	90.530	179.540	6716.06	10225.04	-10139.90	1318.15	40°14'6.5703"N	104°31'44.9938"W	2.24	
17014.00	89.430	179.450	6716.13	10412.80	-10328.89	1319.82	40°14'4.7026"N	104°31'44.9990"W	0.58	
17109.00	89.700	178.540	6716.85	10507.26	-10423.87	1321.49	40°14'3.7639"N	104°31'44.9909"W	1.00	
17203.00	89.740	178.980	6717.31	10600.77	-10517.84	1323.52	40°14'2.8351"N	104°31'44.9779"W	0.47	
17298.00	89.340	178.700	6718.07	10695.27	-10612.82	1325.44	40°14'1.8964"N	104°31'44.9666"W	0.51	
17392.00	89.580	178.700	6718.96	10788.78	-10706.79	1327.58	40°14'0.9676"N	104°31'44.9523"W	0.26	
17487.00	89.770	178.290	6719.50	10883.33	-10801.76	1330.07	40°14'0.0289"N	104°31'44.9336"W	0.48	Last BH MWD Survey
17534.00‡	89.770	178.290	6719.69	10930.13	-10848.74	1331.47	40°13'59.5646"N	104°31'44.9221"W	0.00	Projection to Bit

REFERENCE WELLPATH IDENTIFICATION

Operator	NOBLE ENERGY, INC	Well	GUTTERSEN D10-715
Field	WELD COUNTY (NOBLE NAD 83 GRID)	API/Legal	
Facility	SEC.34-T04N-R64W	Wellbore	GUTTERSEN D10-715 AWB
Slot	SLOT#17 GUTTERSEN D10-715 (465' FSL & 1625' FEL, SEC.34)		

TARGETS

Name	TVD [ft]	North [ft]	East [ft]	Grid East [US ft]	Grid North [US ft]	Latitude	Longitude	Shape
GUTTERSEN D10-745 SECTION 10	0.00	-0.97	-89.30	3269632.26	1340132.30	40°15'46.9080"N	104°32'1.7160"W	polygon
2D Polygon: dimensions not calculated								
GUTTERSEN D10-745 SECTION 3	0.00	-0.97	-89.30	3269632.26	1340132.30	40°15'46.9080"N	104°32'1.7160"W	polygon
2D Polygon: dimensions not calculated								
GUTTERSEN D10-715 REV-1 BHL (200'FSL&350'FEL,SEC.10)	6722.00	-10849.93	1346.05	3271067.54	1329283.83	40°13'59.5512"N	104°31'44.7343"W	point
GUTTERSEN D10-715 REV-1 TARGET 1	6724.00	-6561.96	1326.08	3271047.58	1333571.61	40°14'41.9242"N	104°31'44.3864"W	point
GUTTERSEN D10-715 REV-1 LP/TPZ (200'FNL&330'FEL,SEC.3)	6739.00	-648.24	1298.54	3271020.04	1339485.06	40°15'40.3624"N	104°31'43.9064"W	point

WELLPATH COMPOSITION - Ref Wellbore: GUTTERSEN D10-715 AWB Ref Wellpath: GUTTERSEN D10-715 AWP

Start MD [ft]	End MD [ft]	Positional Uncertainty Model	Log Name/Comment	Wellbore	Survey Date
0.00	1951.00	Gyrodata 2015 - GC+DROP+COND	Gyrodata 2015 - GC+DROP+COND	GUTTERSEN D10-715 AWB	2/9/2022
1951.00	17534.00	OWSG MWD rev2 (MS+IFR1)	8.5" AT-Curve Pro OWSG MWD rev2 (MS+IFR1)	GUTTERSEN D10-715 AWB	2/9/2022

REFERENCE WELLPATH IDENTIFICATION			
Operator	NOBLE ENERGY, INC	Well	GUTTERSEN D10-715
Field	WELD COUNTY (NOBLE NAD 83 GRID)	API/Legal	
Facility	SEC.34-T04N-R64W	Wellbore	GUTTERSEN D10-715 AWP
Slot	SLOT#17 GUTTERSEN D10-715 (465' FSL & 1625' FEL, SEC.34)		

WELLPATH COMMENTS				
MD [ft]	Inclination [°]	Azimuth [°]	TVD [ft]	Comment
1951.00	0.210	212.570	1950.97	Last Gryo Survey
1988.00	0.400	124.320	1987.96	First BH MWD Survey
17487.00	89.770	178.290	6719.50	Last BH MWD Survey
17534.00	89.770	178.290	6719.69	Projection to Bit