

LEGEND

- HAUL ROUTE / EXISTING ACCESS
- COUNTY LINE
- QUARTER SECTION LINE
- SECTION LINE
- EDGE OF PAD DISTURBANCE
- WORKING PAD SURFACE
- MINERAL DEVELOPMENT
- MINERAL BUFFER ZONE
- ROAD WAY
- OIL / GAS WELL
- FACILITY/ TANK BATTERY

NOTES:
1. ALL WELLS AND FACILITIES ARE FROM COGCC DATA (LAST ACCESSED AUGUST 19, 2021).

RELATED LOCATION & FLOWLINE MAP
T1N R65W 6TH PM
WELD COUNTY, COLORADO

LOCATION ID	LOCATION NAME	LOCATION NUMBER	OPERATOR NAME
407394	RMPCO (UPRR) LANGE #1 (PA)	SESE 21 1N65W 6	ORM EXPLORATION CO.
466977	WILLOW/CANAL LOCATION	SWSW 22 1N65W 6	CONFLUENCE DJ LLC.
439583	DRAKE #01N-65W-22-8N (PR)	SWSE 22 1N65W 6	VERDAD RESOURCES LLC.
407298	GLEN YOUNG #2 (PA)	CNE 28 1N65W 6	KP KAUFFMAN COMPANY INC.
439608	YOUNG 01N-65W-28-8N (PR)	NENE 28 1N65W 6	VERDAD RESOURCES LLC.
407235	GLEN YOUNG #1 (PA)	CNE 28 1N65W 6	KP KAUFFMAN COMPANY INC.
423992	ROWE #13N-27HZ (SI)	NENE 27 1N65W 6	VERDAD RESOURCES LLC.
407153	CHAMPLIN 365AMOCO UNIT A #2 (PA)	CNW 33 1N65W 6	AMOCO PRODUCTION COMPANY
323005	JORDAN #34-2 (PR)	NENW 34 1N65W 6	KP KAUFFMAN COMPANY INC.
319064	JORDAN IVAR #1 (PR)	CNE 34 1N65W 6	KP KAUFFMAN COMPANY INC.
323108	JORDAN #34-3 (PR)	NESW 34 1N65W 6	KP KAUFFMAN COMPANY INC.
323205	JORDAN #34-4 (PR)	NESE 34 1N65W 6	KP KAUFFMAN COMPANY INC.
449244	BUFORD/JUDY/DESHA LOCATION	SWSW 34 1N65W 6	CONFLUENCE DJ LLC.
323179	JORDAN #34-5 (PR)	SESW 34 1N65W 6	KP KAUFFMAN COMPANY INC.
327317	CHAMPLIN 78 AMOCO E#1 (PA)	SWSW 35 1N65W 6	KERR MCGEE OIL & GAS ONSHORE LP
377114	PENROD #4-3 (PA)	NWNW 4 1S65W 6	BERGE EXPLORATION INC.



TOPOGRAPHIC

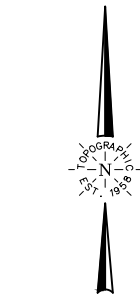
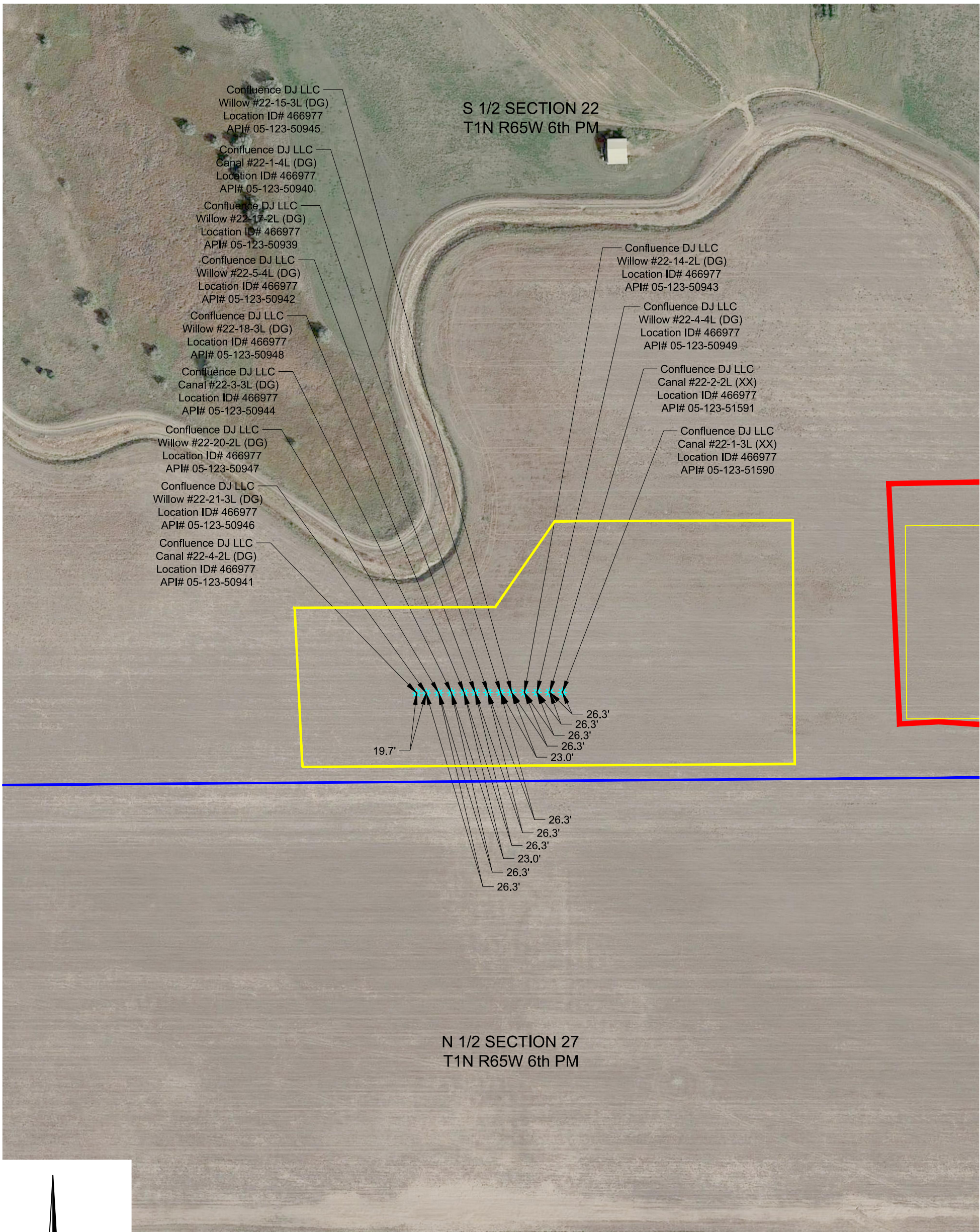
LOYALTY INNOVATION LEGACY

520 Stacy Court Ste B, Lafayette, CO 80026
303.666.0379 www.topographic.com

VERDAD RESOURCES FAWN 2734 FAWN 2833			
FIELD	05/06/2021	DRAFT	SW
REV 4	3/23/2022	CHECK	ZAK
SHEET : 1 OF 2		JOB: 141441	

NOTES:
1. ALL WELLS AND FACILITIES ARE FROM COGCC DATA (LAST ACCESSED
AUGUST 19, 2021).

RELATED LOCATION & FLOWLINE MAP
T1N R65W 6TH PM
WELD COUNTY, COLORADO



SCALE: 1" = 200'
0' 100' 200'



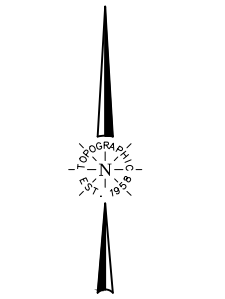
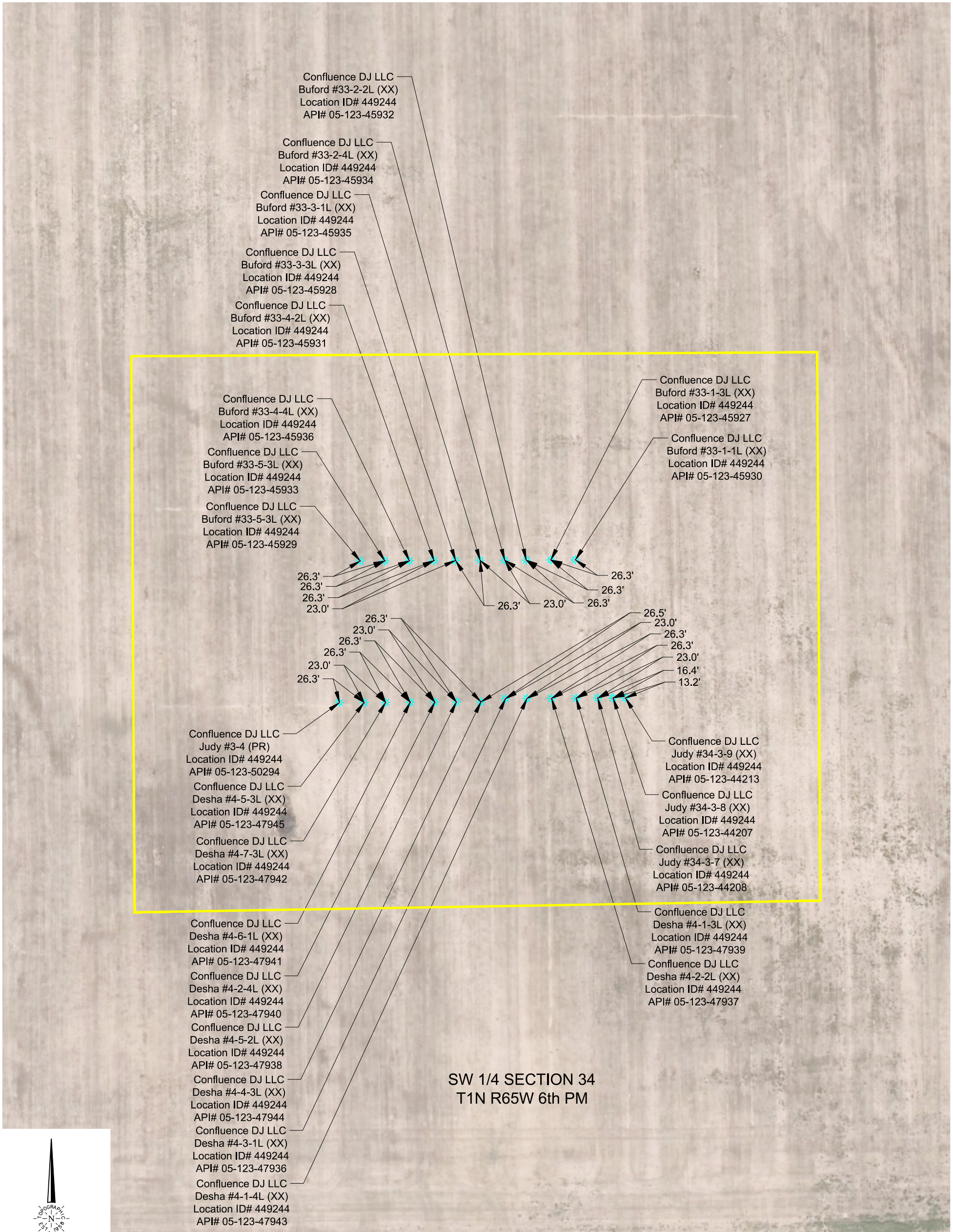
VERDAD RESOURCES			
FAWN 2734			
FAWN 2833			
FIELD	05/06/2021	DRAFT	SW
REV 3	03/18/2022	CHECK	ZAK
SHEET : 2 OF 3		JOB: 141441	

LEGEND

- HAUL ROUTE / EXISTING ACCESS
- COUNTY LINE
- QUARTER SECTION LINE
- SECTION LINE
- MINERAL DEVELOPMENT
- MINERAL BUFFER ZONE
- ROAD WAY
- EXISTING OIL/GAS FACILITY
- OIL / GAS WELL
- FACILITY/ TANK BATTERY

NOTES:
1. ALL WELLS AND FACILITIES ARE FROM COGCC DATA (LAST ACCESSED AUGUST 19, 2021).

RELATED LOCATION & FLOWLINE MAP
T1N R65W 6TH PM
WELD COUNTY, COLORADO



LEGEND

- HAUL ROUTE / EXISTING ACCESS
- COUNTY LINE
- QUARTER SECTION LINE
- SECTION LINE
- MINERAL DEVELOPMENT
- MINERAL BUFFER ZONE
- ROAD WAY
- EXISTING OIL/GAS FACILITY
- OIL / GAS WELL
- FACILITY/ TANK BATTERY

NOTES:
1. ALL WELLS AND FACILITIES ARE FROM COGCC DATA (LAST ACCESSED AUGUST 19, 2021).

RELATED LOCATION & FLOWLINE MAP
T1N R65W 6TH PM
WELD COUNTY, COLORADO