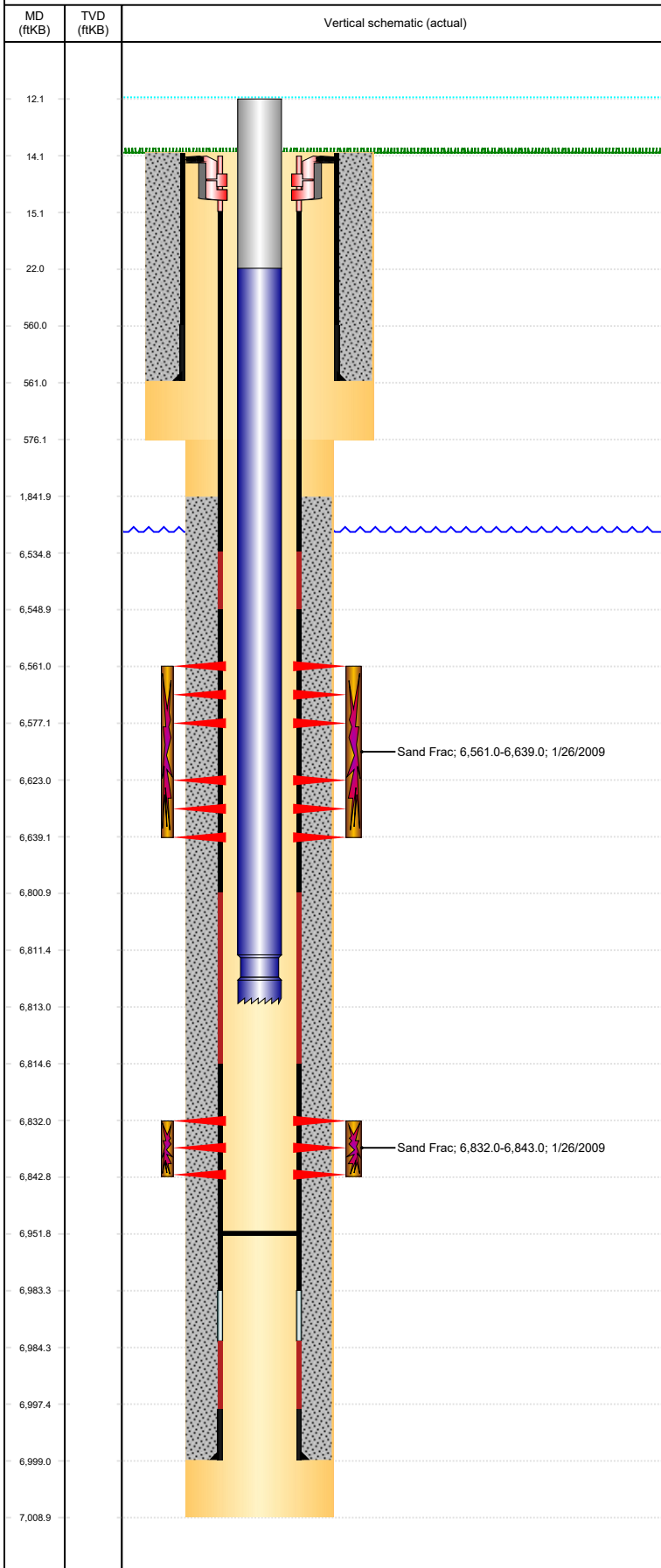


**Well Name: BOOTH C35-07**

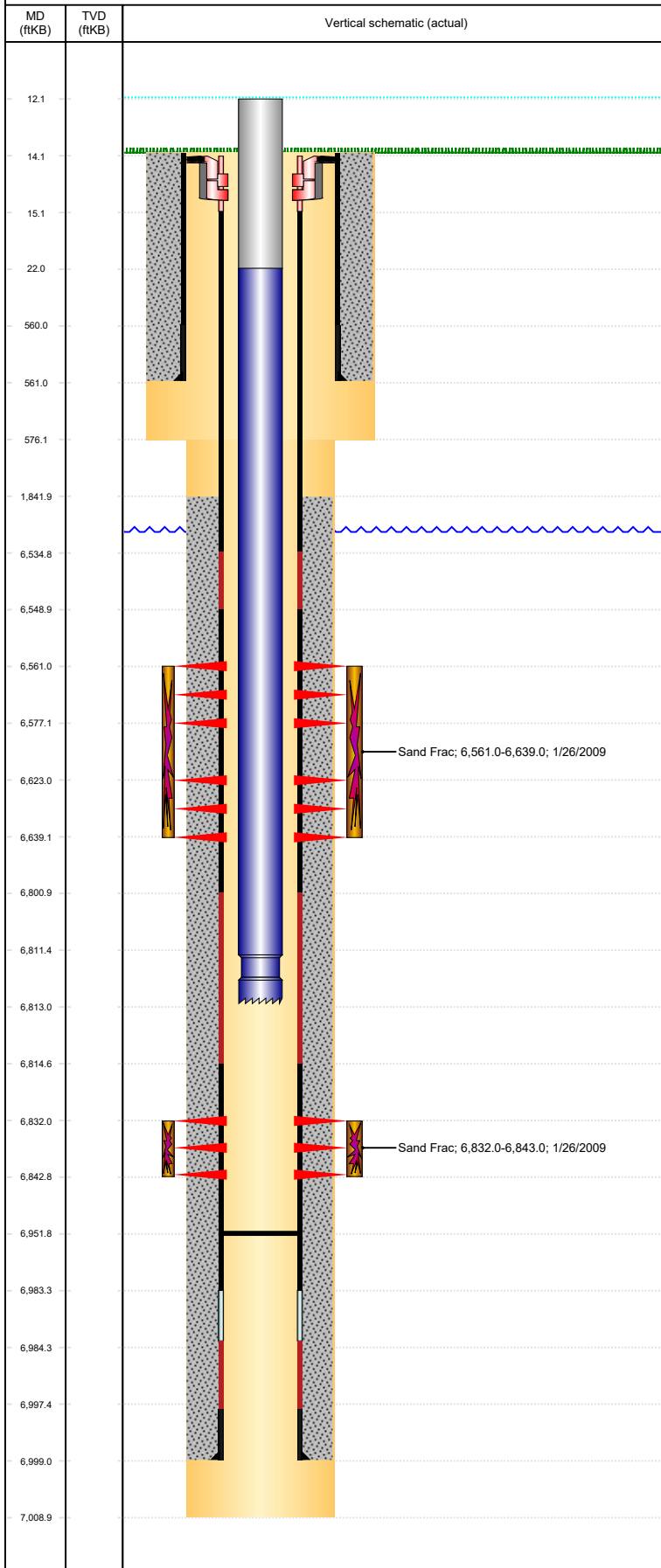
VERTICAL, ORIGINAL HOLE, 4/21/2022 3:36:27 PM



Well Header							
API 05-123-27180	Business Unit DJ BASIN		District 15		Well Config VERTICAL		
Original KB Elevation (ft) 4,723	KB - GL / MSL (ftKB) 14.00		Spud Date 12/11/2008		P & A Date		
Comment							
Directions To Well WCR 40 & 57, SOUTH 1 MILE, EAST 1.4 MILES, NORTH 9/10THS, W 1/4, SWW 4/10.							
Congressional Location							
Quarter 3 SW	Quarter 4 NE	Section 35	Township 4	Twntshp N/S Dir N	Range 64	Range E/W Dir W	
Bottom Hole Legal Location							
Bottom Hole Legal Location							
Plug Back Total Depths							
Date	Depth (ftKB)	Method		Com			
12/14/2008	6,984.0	CASING TALLY					
5/14/2009	6,951.8	CASING TALLY					
Wellbore Sections							
Section Des		Size (in)		Act Top, MD (ftKB)		Act Btm, MD (ftKB)	
SURFACE		12 1/4		14		576	
PRODUCTION		7 7/8		576		7,009	
Zone Statuses							
Zone Name	Status Date	Status	Fluid Type	Job	Prod Method		
NIOBRARA	2/11/2009	PR		DRILLING/CO...	Flowing		
NIOBRARA	2/16/2010	PR					
CODELL	2/11/2009	PR		DRILLING/CO...	Flowing		
CODELL	2/16/2010	PR					
Casing Strings							
Surface, 561.0ftKB							
Casing Description	Run Date	OD (in)	Wt/Len (l...	Grade	Top, MD (ft...	MD (ftKB)	
Surface	12/11/2008	8 5/8	24.00	J-55	14.0	561.0	
Production, 6,999.0ftKB							
Casing Description	Run Date	OD (in)	Wt/Len (l...	Grade	Top, MD (ft...	MD (ftKB)	
Production	12/14/2008	4 1/2	11.60	M-80	14.1	6,999.0	
Cement							
Description				Top Depth (ftKB)		Bottom Depth (ftKB)	
SURFACE CASING CEMENT				14.0		561.0	
Description				Top Depth (ftKB)		Bottom Depth (ftKB)	
PRODUCTION CASING CEMENT				1,842.0		6,999.0	
Tubing Strings							
Tubing Description	Run Date	String...	ID (in)	Wt (lb/ft)	Grade	Len (ft)	Set De...
Tubing - Production	5/15/2009	2 3/8	2.00	4.70	J-55	6,800.90	
Tubing Components							
Item Des	OD (in)	Wt (lb/ft)	Grade	Jts	Len (ft)	Btm (ftKB)	Btm (TVD) (ftKB)
Tubing Pup Joint	2 3/8	4.70	J-55	1	10.00	22.0	
Tubing	2 3/8	4.70	J-55	220	6,789.50	6,811.5	
Notched collar	2 3/8	0.00	0	1	1.40	6,812.9	
Other In Hole							
Run Date	Des		Make		OD (in)	Top (ftKB)	Btm (ftKB)
Logs							
Date	Type				Top, MD (ftKB)	Btm, MD (ftKB)	
12/14/2008	Caliper/Comp. Density/Neutron/GR/SP/ML				2,550.0	7,009.0	
12/14/2008	DIL/GR/SP/Caliper				563.0	7,009.0	
12/22/2008	CBL/CCL/GR				1,700.0	6,960.0	
Perforation Data							
Linked Zone	Bnch/St g	Sum of Entered Shot Total	Top (ftKB)	Btm (ftKB)		Date	
NIOBRARA, ORIGINAL HOLE	A	32	6,561.00	6,577.00		1/26/2009	
NIOBRARA, ORIGINAL HOLE	B	32	6,623.00	6,639.00		1/26/2009	
CODELL, ORIGINAL HOLE	01	44	6,832.00	6,843.00		12/22/2008	

**Well Name: BOOTH C35-07**

VERTICAL, ORIGINAL HOLE, 4/21/2022 3:36:28 PM



## Perforation Data

Linked Zone	Bnch/St g	Sum of Entered Shot Total	Top (ftKB)	Btm (ftKB)	Date
-------------	-----------	---------------------------	------------	------------	------

**Total**

**108**

## Stimulation Intervals

Interval...	Start Date	Primary Job Type	Zone
-------------	------------	------------------	------

1	1/26/2009	DRILLING/COMPLETION - ORIGINAL	CODELL, ORIGINAL HOLE
---	-----------	--------------------------------	-----------------------

Technical Result Success	Tech Result Details According to Plan	Tech Result Note
Comment (CODELL): SHUT DOWN DURING 3 PSA STAGE BECAUSE MOUNTAIN MOVER RAN OUT OF DIESEL. AFTER 8 MINUTES WAS NOT ABLE TO START ENGINE. FLUSHED WELL AND WAITING UNTIL FUEL SYSTEM COULD BE PRIMED UP AGAIN. RESUMED JOB RAMPING FROM PAD UP TO 4 PSA. DOWN FOR LESS THAT 30 MINUTES DURING THAT TIME. POST 5 MIN = 3422 PSI.		

Interval...	Start Date	Primary Job Type	Zone
-------------	------------	------------------	------

2	1/26/2009	DRILLING/COMPLETION - ORIGINAL	NIOBRARA, ORIGINAL HOLE
---	-----------	--------------------------------	-------------------------

Technical Result Success	Tech Result Details According to Plan	Tech Result Note
Comment (NIOBRARA): SHUT DOWN 1509 BBLS INTO JOB ON SLICKWATER PAD BECAUSE OF A LEAK ON HES FRAC LINE. REPLACED O-RING, TESTED AND RESUMED JOB. DOWN FOR A TOTAL OF 10 MINS. NO OTHER ISSUES TO REPORT.		