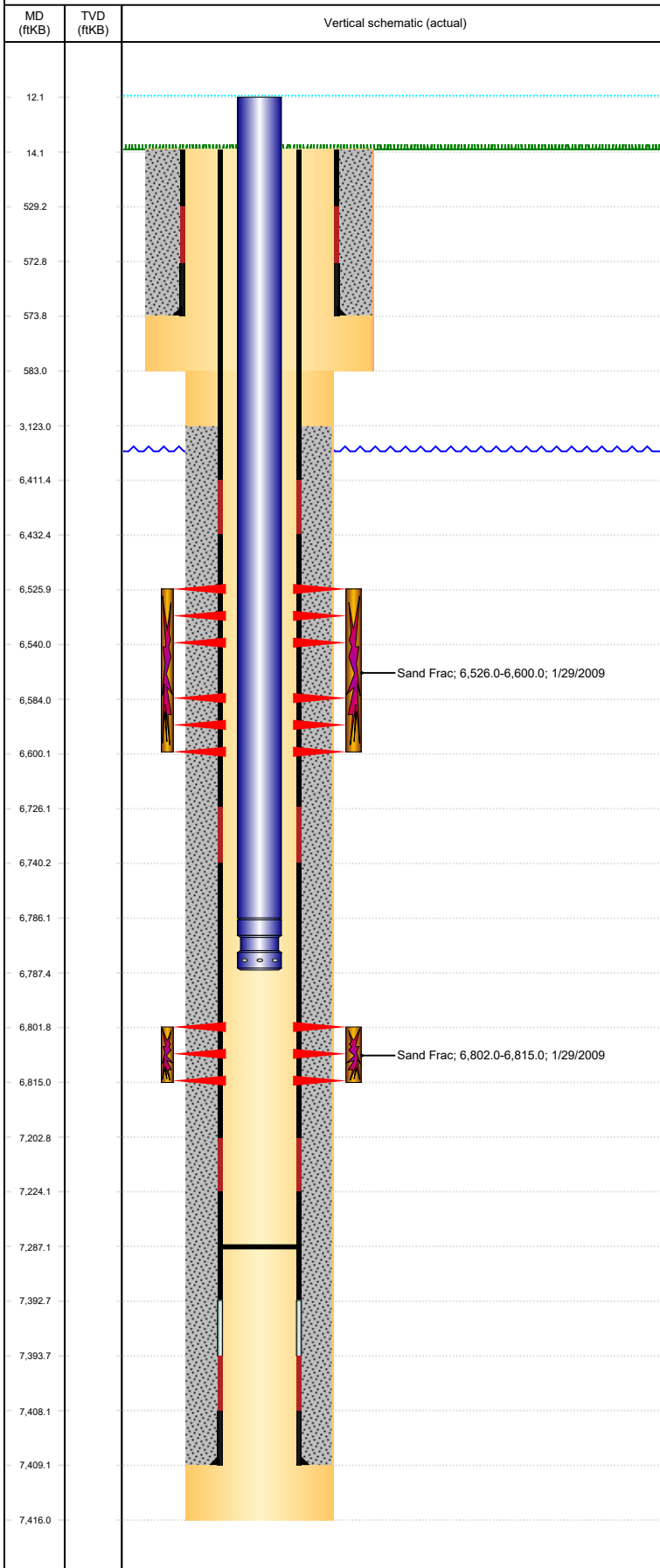


Well Name: BOOTH C35-08

VERTICAL, ORIGINAL HOLE, 4/21/2022 3:35:19 PM



Well Header

API 05-123-27181	Business Unit DJ BASIN	District 15	Well Config VERTICAL
Original KB Elevation (ft) 4,718	KB - GL / MSL (ftKB) 14.00	Spud Date 12/16/2008	P & A Date
Comment			

Directions To Well
WCR 40 & 57, SOUTH 1 MILE, EAST 1.4 MILES, NORTH 9/10THS, W 1/4, SW 1/10, S 1/10 INTO.

Congressional Location

Quarter 3 SE	Quarter 4 NE	Section 35	Township 4	Twonshp N/S Dir N	Range 64	Range E/W Dir W
-----------------	-----------------	---------------	---------------	----------------------	-------------	--------------------

Bottom Hole Legal Location

Bottom Hole Legal Location

Plug Back Total Depths

Date	Depth (ftKB)	Method	Com
12/21/2008	7,393.7	CASING TALLY	
12/29/2008	7,287.0	TAG	TAG WITH WIRELINE LOGGING TOOLS.

Wellbore Sections

Section Des	Size (in)	Act Top, MD (ftKB)	Act Btm, MD (ftKB)
SURFACE	12 1/4	14	583
PRODUCTION	7 7/8	583	7,416

Zone Statuses

Zone Name	Status Date	Status	Fluid Type	Job	Prod Method
NIOBRARA	2/19/2009	PR		DRILLING/CO...	Flowing
NIOBRARA	2/16/2010	PR			
CODELL	2/19/2009	PR		DRILLING/CO...	Flowing
CODELL	2/16/2010	PR			

Casing Strings

Surface, 573.9ftKB

Casing Description	Run Date	OD (in)	Wt/Len (l...)	Grade	Top, MD (ft...)	MD (ftKB)
Surface	12/17/2008	8 5/8	24.00	J-55	14.0	573.9

Production, 7,409.2ftKB

Casing Description	Run Date	OD (in)	Wt/Len (l...)	Grade	Top, MD (ft...)	MD (ftKB)
Production	12/21/2008	4 1/2	11.60	M-80	14.0	7,409.2

Cement

Description	Top Depth (ftKB)	Bottom Depth (ftKB)
Surface Casing Cement	14.0	573.9
Description	Top Depth (ftKB)	Bottom Depth (ftKB)
Production Casing Cement	3,123.0	7,409.2

Tubing Strings

Tubing Description	Run Date	String...	ID (in)	Wt (lb/ft)	Grade	Len (ft)	Set De...
Tubing - Production	5/8/2009	2 3/8	2.00	4.70	J-55	6,775.35	6,787.2

Tubing Components

Item Des	OD (in)	Wt (lb/ft)	Grade	Jts	Len (ft)	Btm (ftKB)	Btm (TVD) (ftKB)
Tubing	2 3/8	4.70	J-55	220	6,773.95	6,786.0	6,785.8
Pump Seating Nipple	2 3/8	0.00	0	1	1.40	6,787.4	6,787.2

Other In Hole

Run Date	Des	Make	OD (in)	Top (ftKB)	Btm (ftKB)	Pr op R un ?

Logs

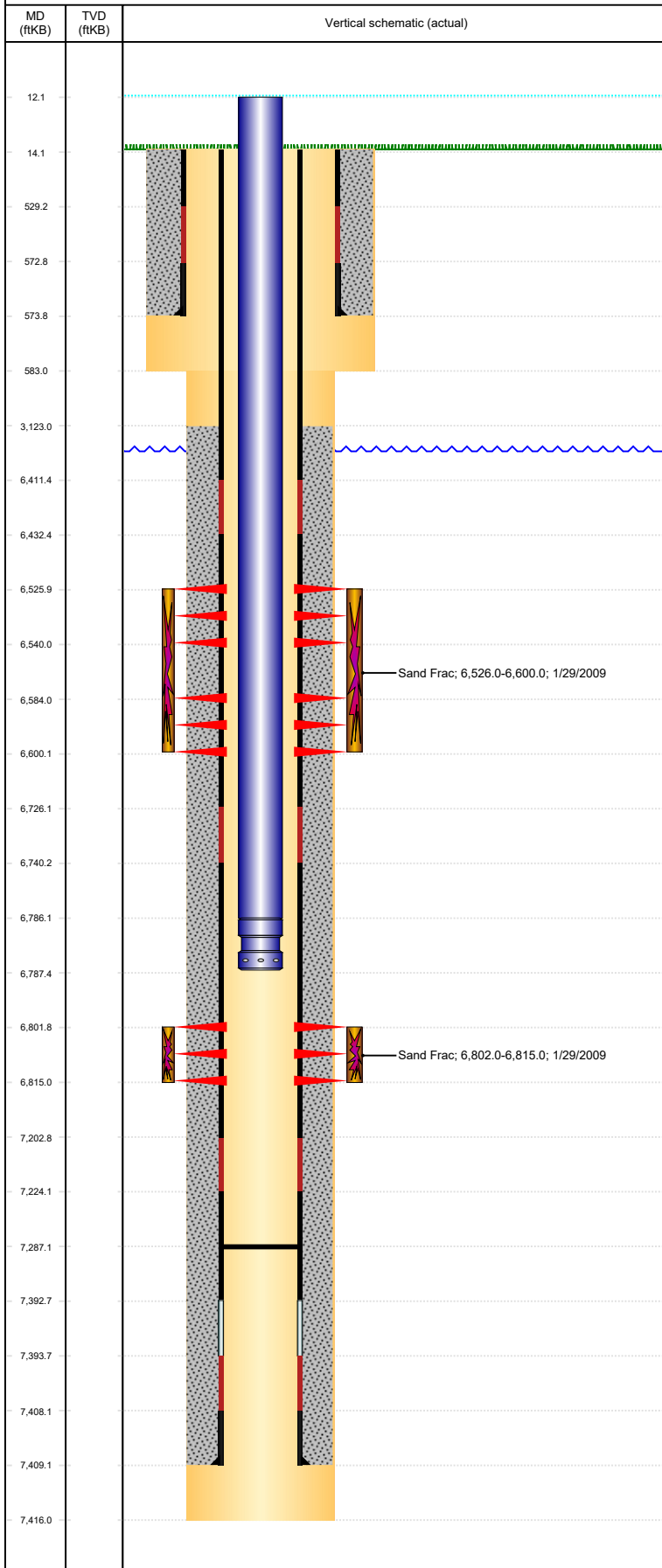
Date	Type	Top, MD (ftKB)	Btm, MD (ftKB)
12/20/2008	DIL/GR/SP/Caliper	573.0	7,415.0
12/20/2008	Caliper/Comp. Density/Neutron/GR/SP/ML	2,720.0	7,415.0
12/29/2008	CBL/CCL/GR	2,608.0	7,286.0

Perforation Data

Linked Zone	Bnch/St g	Sum of Entered Shot Total	Top (ftKB)	Btm (ftKB)	Date
NIOBRARA, ORIGINAL HOLE	A	28	6,526.00	6,540.00	1/29/2009
NIOBRARA, ORIGINAL HOLE	B	32	6,584.00	6,600.00	1/29/2009
CODELL, ORIGINAL HOLE		52	6,802.00	6,815.00	1/7/2009

Well Name: BOOTH C35-08

VERTICAL, ORIGINAL HOLE, 4/21/2022 3:35:19 PM



Perforation Data						
Linked Zone		Bnch/St g	Sum of Entered Shot Total	Top (ftKB)	Btm (ftKB)	Date
Total			112			
Stimulation Intervals						
Interval...	Start Date	Primary Job Type			Zone	
1	1/29/2009	DRILLING/COMPLETION - ORIGINAL			CODELL, ORIGINAL HOLE	
Technical Result			Tech Result Details		Tech Result Note	
Success			According to Plan			
Comment						
PRE-ISIP = 2248 PSI, 5-MIN = 1316 PSI. 21 OF 52 PERFS OPEN, 292 NWB FRICTION, 85 PSI PERF FRICTION, AND 660 PSI TOTAL FRICTION. POST JOB ISIP = 3381 PSI, 5-MIN = 3241 PSI.						
Interval...	Start Date	Primary Job Type			Zone	
2	1/29/2009	DRILLING/COMPLETION - ORIGINAL			NIOBRARA, ORIGINAL HOLE	
Technical Result			Tech Result Details		Tech Result Note	
Success			According to Plan			
Comment						
SLICKWATER PAD- ISIP (220 BBL) = 3325 PSI. POST-ISIP = 3454 PSI, 5-MIN = 3307 PSI. TURN ON IN 24 MINUTES 3200 PSI.						