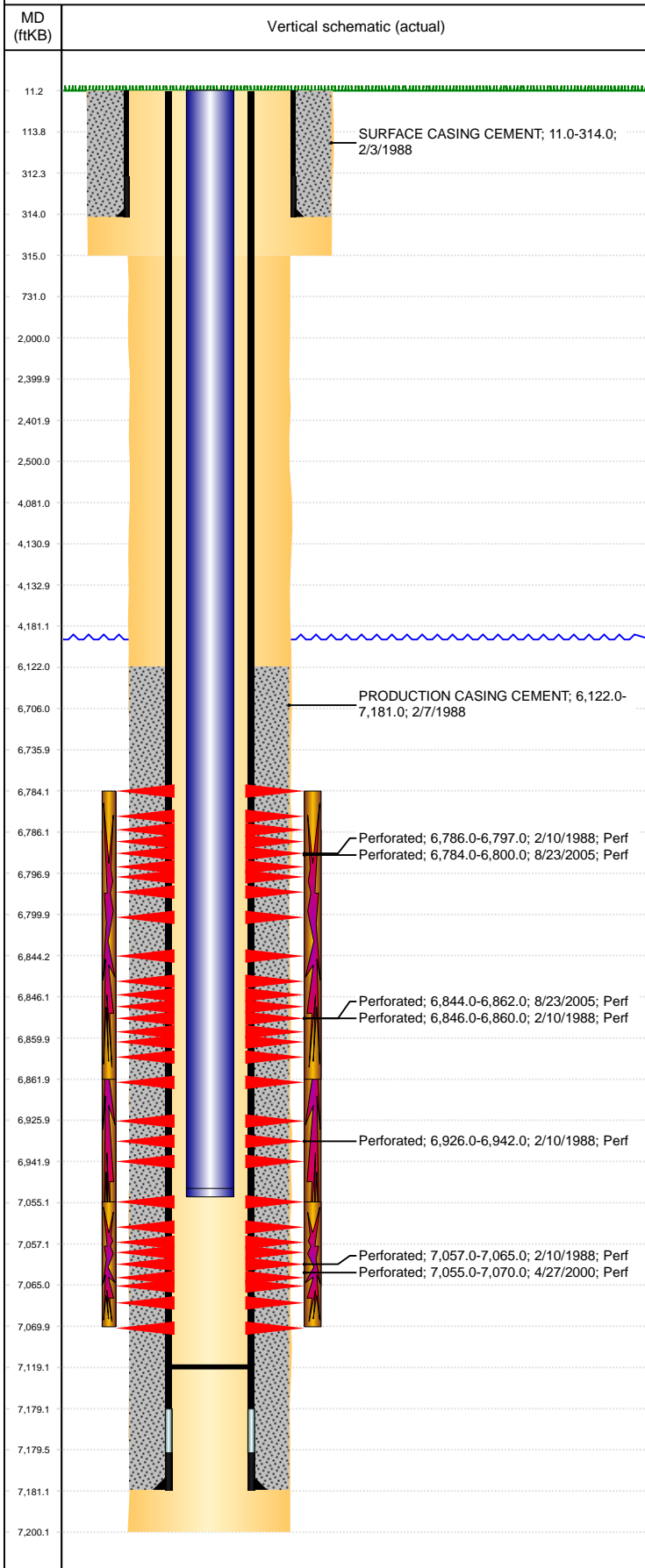


**Well Name: OCOMA II C31-09**

VERTICAL, ORIGINAL HOLE, 4/21/2022 3:01:53 PM



Well Header									
API 05-123-13833		Business Unit DJ BASIN		District 15		Well Config VERTICAL			
KB - GL / MSL (ft... 11.00		Spud Date 2/3/1988		P & A Date		Well Production Status PR			SoRT No
Comment LIMITED ENTRY. DISCREPANCIES: DR RPT TD DATE 2/6/1988, ST RPT TD DATE 2/7/1988. DR RPT/LOG TD 7200', ST RPT TD 7198'; DR RPT SUR CSG 314', ST RPT SUR CSG 313'; DR RPT PROD CSG @ 7181', ST RPT PROD CSG @ 7198'. FIELD OPERATIONS NOTICE - FLOWLINES ABANDONED PER RULE 1103, RCVD 6/29/17.									
Surface Location (Congressional)									
Qtr 3 NE	Qtr 4 SE	Section 31	Twnshp 4	Twnsh... N	Range 64	Rng E/... W	Actual Latitude (°) 40.26710548		Actual Longitude (°) -104.58667717
Wellbore Sections									
Section Des			Size (in)			Act Top, MD (ftKB)		Act Btm, MD (ftKB)	
SURFACE			12 1/4			11		315	
PRODUCTION			7 7/8			315		7,200	
Casing Strings									
Csg Des			Run Date		OD (in)	Wt/Len (lb/ft)	Grade	Top, MD (ftKB)	MD (ftKB)
Surface			2/3/1988		8 5/8	24.00		11.0	314.0
Production			2/7/1988		4 1/2	15.10		11.0	7,181.0
Cement									
Des					Start Date		Top (ftKB)		Btm (ftKB)
SURFACE CASING CEMENT					2/3/1988		11.0		314.0
PRODUCTION CASING CEMENT					2/7/1988		6,122.0		7,181.0
Zone Statuses									
Zone Name		Status Date		Status	Fluid Type	Job			Prod Method
NIOBRARA		9/15/2005		PR		RE-FRAC, 8/18/2005 00:00			Flowing
NIOBRARA		1/17/2006		PR		COMMINGLE ZONES, 12/6/2005 00:00			Flowing
CODELL		8/23/2005		SI		RE-FRAC, 8/18/2005 00:00			
CODELL		1/17/2006		PR		COMMINGLE ZONES, 12/6/2005 00:00			Flowing
Perforation Data									
Linked Zone			Bnch/Stg	Entered Shot Total	Top (ftKB)		Btm (ftKB)		Date
NIOBRARA, ORIGINAL HOLE			A	96	6,784.00		6,800.00		8/23/2005
NIOBRARA, ORIGINAL HOLE			A	2	6,786.00		6,797.00		2/10/1988
NIOBRARA, ORIGINAL HOLE			B	108	6,844.00		6,862.00		8/23/2005
NIOBRARA, ORIGINAL HOLE			B	5	6,846.00		6,860.00		2/10/1988
NIOBRARA-CODELL, ORIGINAL...			C	2	6,926.00		6,942.00		2/10/1988
CODELL, ORIGINAL HOLE				60	7,055.00		7,070.00		4/27/2000
CODELL, ORIGINAL HOLE				6	7,057.00		7,065.00		2/10/1988
Stimulation Intervals									
Zone				Start Date		Top (ftKB)		Btm (ftKB)	
NIOBRARA, ORIGINAL HOLE				9/14/2005		6,784.0		6,862.0	
NIOBRARA-CODELL, ORIGINAL HOLE				2/12/1988		6,786.0		7,065.0	
CODELL, ORIGINAL HOLE				5/3/2000		7,055.0		7,070.0	
Other In Hole									
Run Date		Des			Make		OD (in)	Top (ftKB)	Btm (ftKB)
Logs									
Date		Type				Top, MD (ftKB)		Btm, MD (ftKB)	
2/7/1988		COMPENSATED DENSITY				3,700.0		7,197.0	
2/7/1988		COMPUTER ANALYZED LOG SYSTEMS				3,700.0		7,197.0	
2/7/1988		INDUCTION				313.0		7,197.0	
2/10/1988		CEMENT BOND				5,920.0		7,125.0	
Plug Back Total Depths									
Date		Type			Com				Depth (ftKB)
2/10/1988		FILL			DEPTH LOGGER ON CBL				7,129.0
12/7/2005		FILL			CLEAN OUT				7,119.0