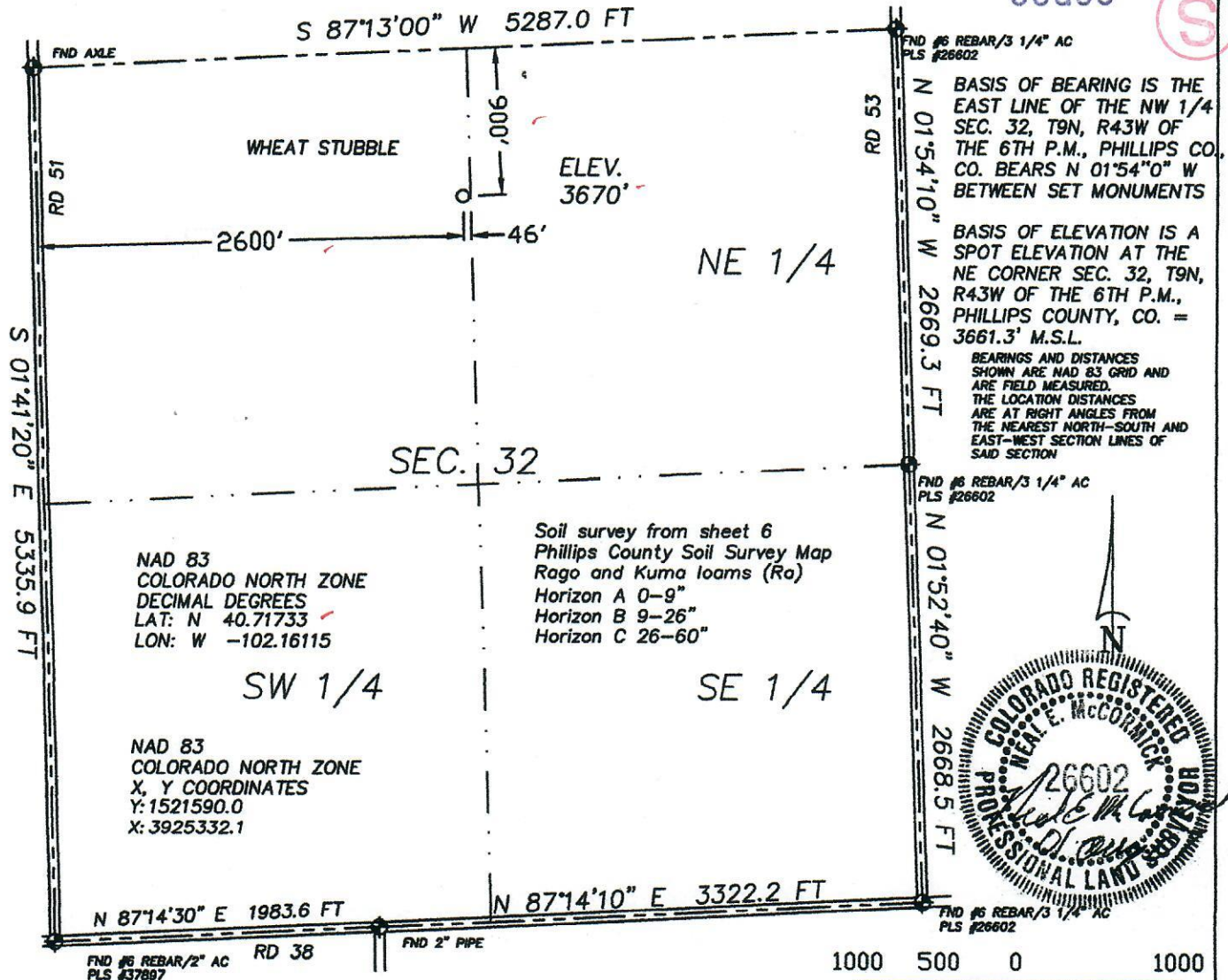


The accompanying plat is an accurate representation of the location of a proposed well. This location may be described as a point 300 feet South of the North line, and 2600 feet East of the West line of Section 32, Township 9 North, Range 43 West of the 6th P.M., Phillips County, Colorado. The surface elevation at this point is 3670 feet m.s.l.  
 Note: This is not a land survey plat.  
 There are no visible improvements within 200 feet of the location

01807412

AUG 27 07

COGCC



3.181 PDOP

- ☀ Dual Producer
- Oil well
- ☀ Gas Well
- ⊙ Dry Hole

GPS OPERATOR: KEVIN MCCORMICK

- Location
- == Road
- == Trail
- Survey Monument
- Half-Sec. Line
- Section Line



GREAT PLAINS  
SURVEYING, INC.

P.O. Box 296 Phone 970-774-3602  
Holyoke, CO 80734 Fax 970-774-3601

DATE OF FIELD WORK:

27 JULY 2007

DATE OF DRAWING:

01 AUGUST 2007

BRINKEMA FARMS #943-32-21

NE 1/4 NW 1/4 SEC. 32, T9N, R43W

PRB OIL & GAS, INC.

PHILLIPS COUNTY, COLORADO

W329N43GPS

7402-130