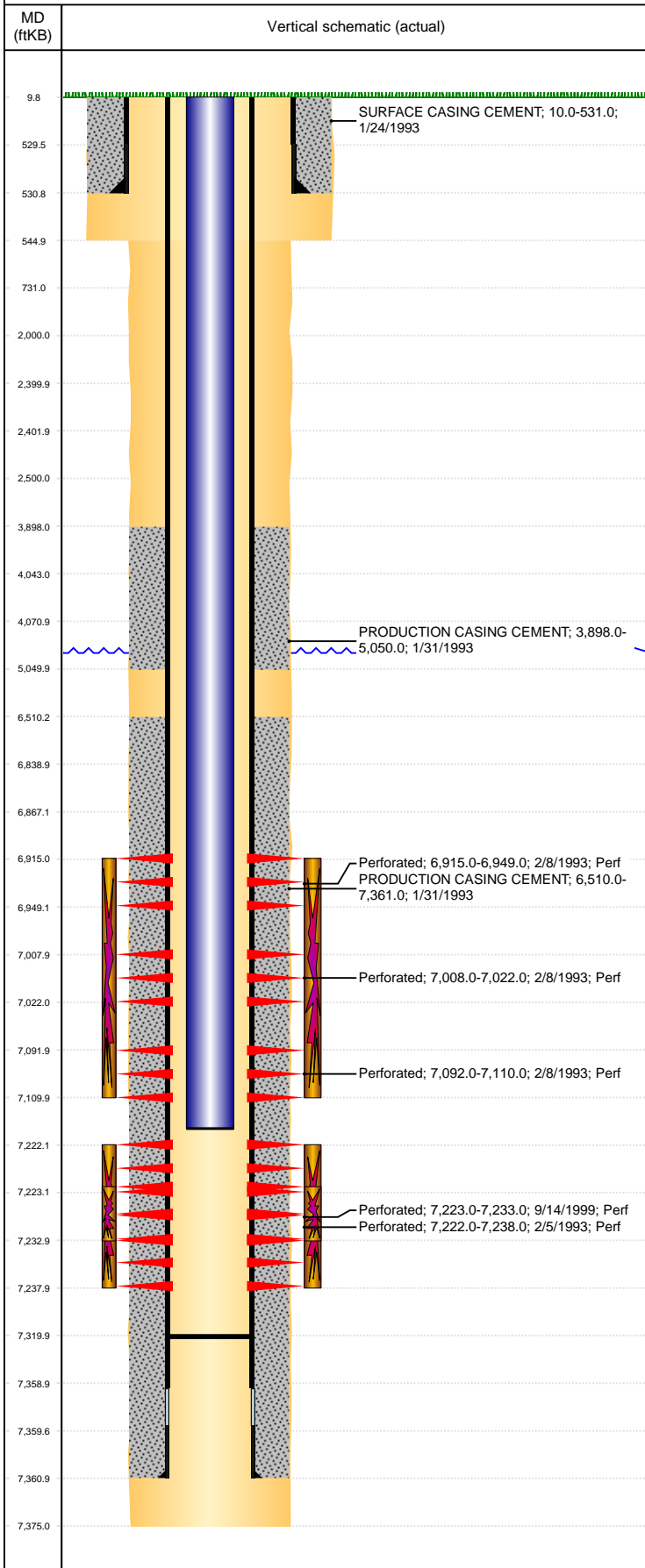


Well Name: KROPP FEDERAL 5-23

VERTICAL, ORIGINAL HOLE, 4/21/2022 10:57:30 AM



Well Header									
API 05-123-16679			Business Unit DJ BASIN			District 15		Well Config VERTICAL	
KB - GL / MSL (ft... 10.00		Spud Date 1/23/1993		P & A Date		Well Production Status PR			SoRT No
Comment WELL DATA SKETCHY AND SPARSE.									
Surface Location (Congressional)									
Qtr 3 SW	Qtr 4 NW	Section 23	Twonshp 4	Twonsh... N	Range 66	Rng E/... W	Actual Latitude (°) 40.29922760	Actual Longitude (°) -104.75089350	
Wellbore Sections									
Section Des			Size (in)			Act Top, MD (ftKB)		Act Btm, MD (ftKB)	
SURFACE			12 1/4			10		545	
PRODUCTION			7 7/8			545		7,375	
Casing Strings									
Csg Des			Run Date		OD (in)	Wt/Len (lb/ft)	Grade	Top, MD (ftKB)	MD (ftKB)
Surface			1/24/1993		8 5/8	24.00	J-55	10.0	531.0
Production			1/31/1993		4 1/2	11.60	I-70	10.0	7,361.0
Cement									
Des					Start Date		Top (ftKB)		Btm (ftKB)
SURFACE CASING CEMENT					1/24/1993		10.0		531.0
PRODUCTION CASING CEMENT					1/31/1993		3,898.0		5,050.0
PRODUCTION CASING CEMENT					1/31/1993		6,510.0		7,361.0
Zone Statuses									
Zone Name		Status Date	Status	Fluid Type	Job			Prod Method	
NIOBRARA		3/5/1993	PR		DRILLING/COMPLETION - ORIGINAL, 1/23/1993...				
CODELL		3/5/1993	PR		DRILLING/COMPLETION - ORIGINAL, 1/23/1993...				
CODELL		9/22/1993	PR		RE-FRAC, 9/13/1999 00:00				
Perforation Data									
Linked Zone			Bnch/Stg	Entered Shot Total	Top (ftKB)		Btm (ftKB)		Date
NIOBRARA, ORIGINAL HOLE			A	9	6,915.00		6,949.00		2/8/1993
NIOBRARA, ORIGINAL HOLE			B	6	7,008.00		7,022.00		2/8/1993
NIOBRARA, ORIGINAL HOLE			C	2	7,092.00		7,110.00		2/8/1993
CODELL, ORIGINAL HOLE				26	7,222.00		7,238.00		2/5/1993
CODELL, ORIGINAL HOLE				60	7,223.00		7,233.00		9/14/1999
Stimulation Intervals									
Zone				Start Date		Top (ftKB)		Btm (ftKB)	
NIOBRARA, ORIGINAL HOLE				2/10/1993		6,915.0		7,110.0	
CODELL, ORIGINAL HOLE				2/5/1993		7,222.0		7,238.0	
CODELL, ORIGINAL HOLE				9/16/1999		7,223.0		7,233.0	
Other In Hole									
Run Date		Des			Make		OD (in)	Top (ftKB)	Btm (ftKB)
Logs									
Date		Type					Top, MD (ftKB)		Btm, MD (ftKB)
1/30/1993		COMPENSATED DENSITY					4,350.0		7,373.0
1/30/1993		INDUCTION					530.0		7,373.0
2/4/1993		CEMENT BOND					3,840.0		7,300.0
Plug Back Total Depths									
Date		Type			Com				Depth (ftKB)
2/13/1993		FILL			CLEANOUT				7,317.0
1/31/2008		FILL			CLEANOUT				7,320.0