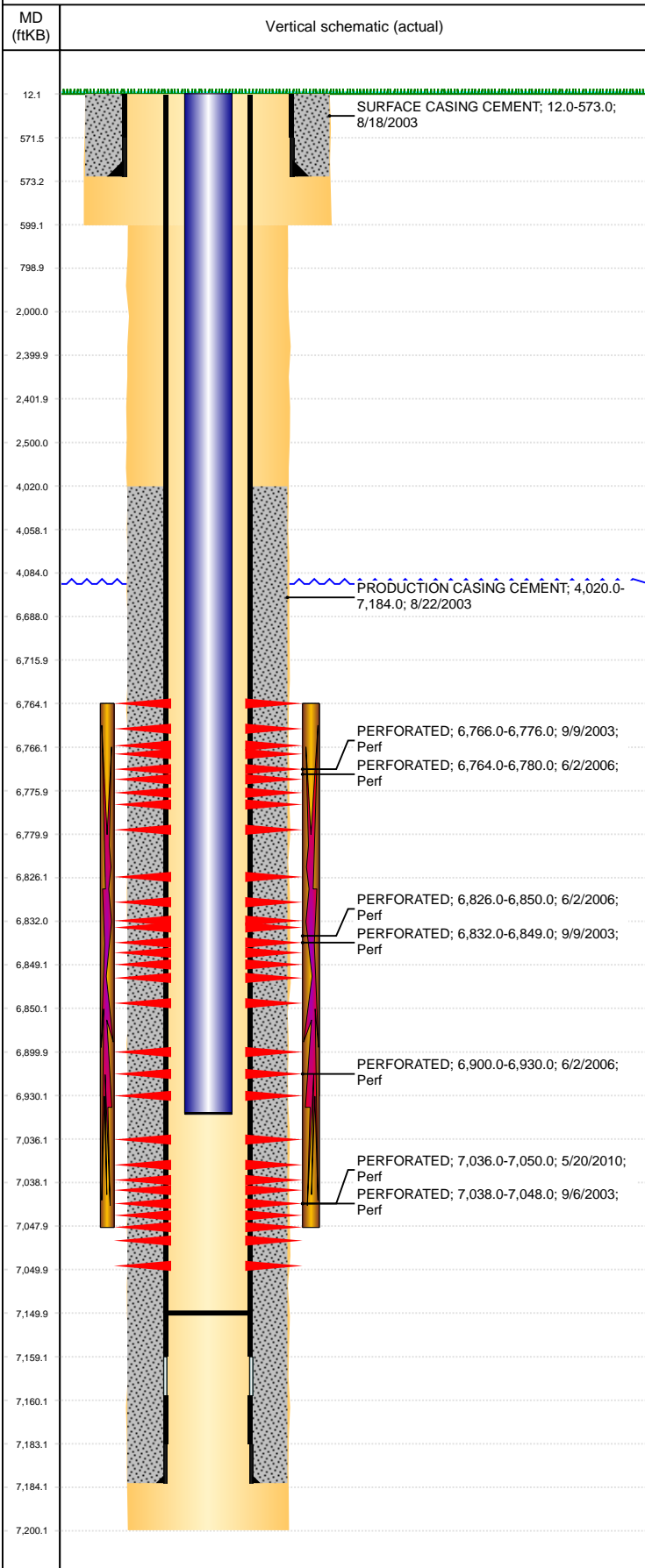


**Well Name: JOHNSON 19-29**

VERTICAL, ORIGINAL HOLE, 4/19/2022 4:07:57 PM



Well Header									
API 05-123-21606		Business Unit DJ BASIN			District 15		Well Config VERTICAL		
KB - GL / MSL (ft... 12.00		Spud Date 8/18/2003		P & A Date		Well Production Status SI		SoRT No	
Comment LIMITED ENTRY									
Surface Location (Congressional)									
Qtr 3 C	Qtr 4 SW	Section 29	Twonshp 4	Twonsh... N	Range 64	Rng E... W	Actual Latitude (°) 40.27983860	Actual Longitude (°) -104.57956020	
Wellbore Sections									
Section Des		Size (in)			Act Top, MD (ftKB)		Act Btm, MD (ftKB)		
SURFACE		12 1/4			12		599		
PRODUCTION		7 7/8			599		7,200		
Casing Strings									
Csg Des		Run Date	OD (in)	Wt/Len (lb/ft)	Grade	Top, MD (ftKB)	MD (ftKB)		
Surface		8/18/2003	8 5/8	24.00	J-55	12.0	573.0		
Production		8/22/2003	4 1/2	11.60	I-80	12.0	7,184.0		
Cement									
Des		Start Date		Top (ftKB)		Btm (ftKB)			
SURFACE CASING CEMENT		8/18/2003		12.0		573.0			
PRODUCTION CASING CEMENT		8/22/2003		4,020.0		7,184.0			
Zone Statuses									
Zone Name	Status Date	Status	Fluid Type	Job			Prod Method		
NIOBRARA	6/29/2006	PR		RE-FRAC, 6/5/2006 00:00			Flowing		
NIOBRARA	5/30/2010	PR		RE-FRAC, 5/18/2010 00:00			Flowing		
CODELL	9/19/2003	PR		DRILLING/COMPLETION - ORIGINAL, 8/18/2003...			Flowing		
CODELL	5/30/2010	PR		RE-FRAC, 5/18/2010 00:00			Flowing		
Perforation Data									
Linked Zone	Bnch/Stg	Entered Shot Total	Top (ftKB)	Btm (ftKB)	Date				
NIOBRARA, ORIGINAL HOLE	A	32	6,764.00	6,780.00	6/2/2006				
NIOBRARA, ORIGINAL HOLE	A	1	6,766.00	6,776.00	9/9/2003				
NIOBRARA, ORIGINAL HOLE	B	48	6,826.00	6,850.00	6/2/2006				
NIOBRARA, ORIGINAL HOLE	B	1	6,832.00	6,849.00	9/9/2003				
NIOBRARA, ORIGINAL HOLE	C	30	6,900.00	6,930.00	6/2/2006				
CODELL, ORIGINAL HOLE		56	7,036.00	7,050.00	5/20/2010				
CODELL, ORIGINAL HOLE		10	7,038.00	7,048.00	9/6/2003				
Stimulation Intervals									
Zone		Start Date		Top (ftKB)		Btm (ftKB)			
NIOBRARA, ORIGINAL HOLE		6/6/2006		6,764.0		6,930.0			
NIOBRARA-CODELL, ORIGINAL HOLE		5/25/2010		6,764.0		7,048.0			
NIOBRARA-CODELL, ORIGINAL HOLE		9/10/2003		6,764.0		7,048.0			
Other In Hole									
Run Date	Des		Make	OD (in)	Top (ftKB)	Btm (ftKB)			
Logs									
Date	Type				Top, MD (ftKB)	Btm, MD (ftKB)			
8/22/2003	CALIPER				3,800.0	7,196.0			
8/22/2003	COMPENSATED NEUTRON				4,000.0	7,196.0			
8/22/2003	GAMMA RAY				4,000.0	7,196.0			
8/23/2003	INDUCTION				560.0	7,196.0			
9/5/2003	CEMENT BOND				3,900.0	7,166.0			
6/26/2010	GHOST DEFT PFCS				6,600.0	7,150.0			
6/26/2010	MIST				6,650.0	7,150.0			
Plug Back Total Depths									
Date	Type	Com				Depth (ftKB)			
9/5/2003	FILL	DEPTH LOGGER ON CBL				7,166.0			
6/26/2010	FILL	MOST RECENT TAG				7,150.0			