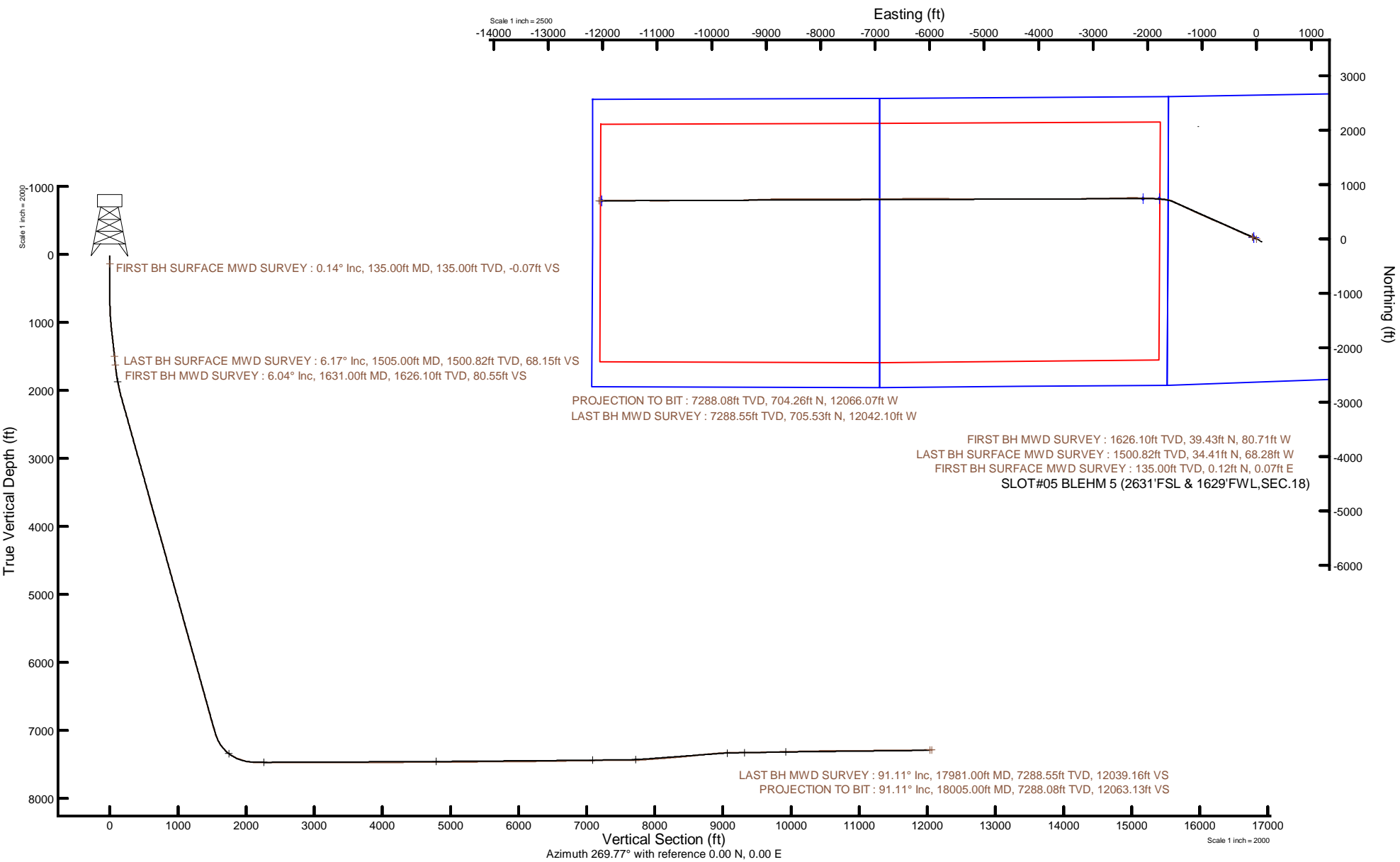


BAYSWATER E&P, LLC



Location: COLORADO Slot: SLOT#05 BLEHM 5 (2631'FSL & 1629'FWL,SEC.18)
 Field: WELD COUNTY (NAD83/TRUE NORTH) Well: BLEHM 5
 Facility: SEC.18-T07N-R66W Wellbore: BLEHM 5 PWB

Plot reference wellpath is BLEHM 5 PWP Rev-B.0	Grid System: NAD83 / Lambert Colorado SP, Northern Zone (501), US feet
True vertical depths are referenced to Ensign 153 (23) (KB)	North Reference: True north
Reference wellpath measured depths are referenced to Ensign 153 (23) (KB)	Scale: True distance
Ensign 153 (23) (KB) to Mean Sea Level: 5099 feet	Coordinates are in feet referenced to Slot
Mean Sea Level to Ground level (At Slot: SLOT#05 BLEHM 5 (2631'FSL & 1629'FWL,SEC.18)): 0 feet	Depths are in feet
Offset wellpath MDs are referenced to each path's default MD datum	Created by: painsetr on 2022-02-17; Database: WellArchitectDB



REFERENCE WELLPATH IDENTIFICATION			
Operator	BAYSWATER E&P, LLC	Well	BLEHM 5
Field	WELD COUNTY (NAD83/TRUE NORTH)	API	0512351625
Facility	SEC.18-T07N-R66W	Wellbore	BLEHM 5 AWB
Slot	SLOT#05 BLEHM 5 (2631'FSL & 1629'FWL,SEC.18)		

REPORT SETUP INFORMATION			
Projection System	NAD83 / Lambert Colorado SP, Northern Zone (501), US feet	Software System	WellArchitect® 6.0
North Reference	True	User	Painsetr
Scale	0.999973	Report Generated	2/17/2022 at 4:26:35 PM
Convergence at slot	0.44° East	Database	WellArchitectDB

WELLPATH LOCATION						
	Local coordinates		Grid coordinates		Geographic coordinates	
	North[ft]	East[ft]	Easting[US ft]	Northing[US ft]	Latitude	Longitude
Slot Location	-28.78	52.78	3187239.37	1452800.50	40.5743830°	-104.8259710°
Facility Reference Pt			3187186.37	1452828.88	40.5744620°	-104.8261610°
Field Reference Pt			3174587.00	1430859.71	40.5144139°	-104.8720750°

WELLPATH DATUM			
Calculation method	Minimum curvature	Ensign 153 (23') (KB) to Facility Vertical Datum	5099.00ft
Horizontal Reference Pt	Slot	Ensign 153 (23') (KB) to Mean Sea Level	5099.00ft
Vertical Reference Pt	Ensign 153 (23') (KB)	Ensign 153 (23') (KB) to Ground Level at Slot (SLOT#05 BLEHM 5 (2631'FSL & 1629'FWL,SEC.18))	5099.00ft
MD Reference Pt	Ensign 153 (23') (KB)	Section Origin	N 0.00, E 0.00 ft
Field Vertical Reference	Mean Sea Level	Section Azimuth	269.77°

REFERENCE WELLPATH IDENTIFICATION				
Operator	BAYSWATER E&P, LLC		Well	BLEHM 5
Field	WELD COUNTY (NAD83/TRUE NORTH)		API	0512351625
Facility	SEC.18-T07N-R66W		Wellbore	BLEHM 5 AWB
Slot	SLOT#05 BLEHM 5 (2631'FSL & 1629'FWL,SEC.18)			

WELLPATH DATA (204 stations) † = interpolated, ‡ = extrapolated station												
MD [ft]	Inclination [°]	Azimuth [°]	TVD [ft]	Vert Sect [ft]	North [ft]	East [ft]	Grid East [US ft]	Grid North [US ft]	Latitude	Longitude	DLS [°/100ft]	Comments
0.00†	0.000	30.310	0.00	0.00	0.00	0.00	3187239.37	1452800.50	40.5743830	-104.8259710	0.00	
23.00	0.000	30.310	23.00	0.00	0.00	0.00	3187239.37	1452800.50	40.5743830	-104.8259710	0.00	
135.00	0.140	30.310	135.00	-0.07	0.12	0.07	3187239.43	1452800.62	40.5743833	-104.8259708	0.12	FIRST BH SURFACE MWD SURVEY
227.00	0.350	157.000	227.00	-0.24	-0.04	0.24	3187239.60	1452800.46	40.5743829	-104.8259702	0.49	
316.00	0.350	49.700	316.00	-0.55	-0.12	0.55	3187239.92	1452800.39	40.5743827	-104.8259690	0.63	
405.00	0.150	260.830	405.00	-0.64	0.04	0.64	3187240.01	1452800.55	40.5743831	-104.8259687	0.54	
495.00	0.270	162.390	495.00	-0.59	-0.18	0.59	3187239.96	1452800.33	40.5743825	-104.8259689	0.36	
584.00	0.210	251.880	584.00	-0.50	-0.43	0.50	3187239.87	1452800.08	40.5743818	-104.8259692	0.38	
674.00	0.370	269.160	674.00	-0.05	-0.49	0.05	3187239.42	1452800.02	40.5743817	-104.8259708	0.20	
763.00	1.520	302.920	762.98	1.23	0.15	-1.23	3187238.14	1452800.64	40.5743834	-104.8259754	1.38	
852.00	2.930	301.690	851.91	4.15	1.99	-4.15	3187235.20	1452802.46	40.5743885	-104.8259860	1.59	
942.00	5.050	300.070	941.69	9.52	5.18	-9.54	3187229.79	1452805.61	40.5743972	-104.8260053	2.36	
1032.00	6.440	302.830	1031.24	17.17	9.90	-17.21	3187222.08	1452810.27	40.5744102	-104.8260330	1.57	
1121.00	7.200	295.970	1119.61	26.36	15.05	-26.42	3187212.83	1452815.35	40.5744243	-104.8260661	1.25	
1211.00	7.370	296.790	1208.88	36.56	20.12	-36.64	3187202.57	1452820.34	40.5744382	-104.8261029	0.22	
1300.00	7.000	294.990	1297.18	46.55	24.98	-46.65	3187192.53	1452825.13	40.5744516	-104.8261389	0.49	
1390.00	6.780	294.180	1386.53	56.35	29.48	-56.47	3187182.67	1452829.55	40.5744639	-104.8261743	0.27	
1480.00	6.140	291.200	1475.96	65.67	33.39	-65.80	3187173.31	1452833.40	40.5744747	-104.8262079	0.80	
1505.00	6.170	293.290	1500.82	68.15	34.41	-68.28	3187170.82	1452834.39	40.5744774	-104.8262168	0.90	LAST BH SURFACE MWD SURVEY
1631.00	6.040	290.690	1626.10	80.55	39.43	-80.71	3187158.36	1452839.32	40.5744912	-104.8262615	0.24	FIRST BH MWD SURVEY
1720.00	7.970	292.860	1714.43	90.60	43.48	-90.77	3187148.27	1452843.29	40.5745023	-104.8262978	2.19	
1810.00	10.020	292.260	1803.32	103.57	48.87	-103.77	3187135.23	1452848.58	40.5745171	-104.8263445	2.28	
1899.00	11.870	292.550	1890.70	119.17	55.31	-119.39	3187119.56	1452854.91	40.5745348	-104.8264008	2.08	
1988.00	13.110	292.210	1977.59	136.93	62.64	-137.19	3187101.71	1452862.10	40.5745549	-104.8264648	1.40	
2078.00	16.710	291.570	2064.55	158.39	71.26	-158.68	3187080.15	1452870.55	40.5745786	-104.8265422	4.00	
2168.00	17.040	292.220	2150.67	182.59	81.00	-182.92	3187055.84	1452880.11	40.5746053	-104.8266294	0.42	
2257.00	16.820	291.660	2235.81	206.59	90.69	-206.96	3187031.73	1452889.61	40.5746319	-104.8267160	0.31	
2346.00	17.420	291.040	2320.87	230.95	100.22	-231.36	3187007.26	1452898.96	40.5746581	-104.8268038	0.70	
2435.00	16.970	295.100	2405.90	255.11	110.51	-255.56	3186982.98	1452909.07	40.5746863	-104.8268909	1.44	
2524.00	17.150	295.300	2490.98	278.69	121.63	-279.18	3186959.28	1452920.01	40.5747169	-104.8269760	0.21	

REFERENCE WELLPATH IDENTIFICATION			
Operator	BAYSWATER E&P, LLC	Well	BLEHM 5
Field	WELD COUNTY (NAD83/TRUE NORTH)	API	0512351625
Facility	SEC.18-T07N-R66W	Wellbore	BLEHM 5 AWB
Slot	SLOT#05 BLEHM 5 (2631'FSL & 1629'FWL,SEC.18)		

WELLPATH DATA (204 stations)												
MD [ft]	Inclination [°]	Azimuth [°]	TVD [ft]	Vert Sect [ft]	North [ft]	East [ft]	Grid East [US ft]	Grid North [US ft]	Latitude	Longitude	DLS [°/100ft]	Comments
2613.00	16.910	294.990	2576.08	302.24	132.71	-302.78	3186935.60	1452930.90	40.5747473	-104.8270609	0.29	
2702.00	17.510	295.110	2661.09	326.05	143.86	-326.63	3186911.66	1452941.87	40.5747779	-104.8271468	0.68	
2792.00	17.120	295.010	2747.01	350.27	155.20	-350.90	3186887.31	1452953.03	40.5748090	-104.8272341	0.43	
2882.00	17.380	294.620	2832.96	374.45	166.40	-375.12	3186863.00	1452964.05	40.5748397	-104.8273213	0.32	
2972.00	17.210	294.110	2918.90	398.78	177.44	-399.49	3186838.55	1452974.90	40.5748700	-104.8274091	0.25	
3061.00	16.590	294.010	3004.05	422.36	187.99	-423.12	3186814.84	1452985.27	40.5748990	-104.8274941	0.70	
3150.00	16.710	293.820	3089.32	445.63	198.33	-446.43	3186791.45	1452995.43	40.5749274	-104.8275780	0.15	
3240.00	17.090	294.430	3175.43	469.46	209.02	-470.31	3186767.50	1453005.94	40.5749567	-104.8276640	0.47	
3330.00	17.050	294.740	3261.47	493.44	220.01	-494.33	3186743.39	1453016.75	40.5749869	-104.8277504	0.11	
3419.00	16.710	294.500	3346.63	516.89	230.78	-517.82	3186719.82	1453027.34	40.5750164	-104.8278350	0.39	
3508.00	16.670	295.880	3431.88	539.97	241.66	-540.95	3186696.61	1453038.04	40.5750463	-104.8279183	0.45	
3597.00	16.840	296.120	3517.11	562.99	252.91	-564.01	3186673.46	1453049.11	40.5750772	-104.8280013	0.21	
3687.00	15.330	294.610	3603.58	585.47	263.60	-586.53	3186650.86	1453059.63	40.5751065	-104.8280824	1.74	
3777.00	16.930	292.820	3690.04	608.32	273.64	-609.43	3186627.89	1453069.49	40.5751341	-104.8281648	1.86	
3866.00	16.920	292.610	3775.18	632.18	283.64	-633.33	3186603.92	1453079.32	40.5751615	-104.8282508	0.07	
3955.00	18.010	292.960	3860.08	656.77	293.99	-657.96	3186579.21	1453089.47	40.5751899	-104.8283395	1.23	
4044.00	17.730	292.040	3944.78	681.95	304.44	-683.19	3186553.90	1453099.74	40.5752186	-104.8284303	0.45	
4134.00	17.700	291.580	4030.51	707.34	314.62	-708.61	3186528.40	1453109.72	40.5752465	-104.8285218	0.16	
4223.00	17.620	291.930	4115.32	732.37	324.62	-733.69	3186503.25	1453119.53	40.5752740	-104.8286121	0.15	
4312.00	17.290	291.690	4200.22	757.12	334.54	-758.47	3186478.39	1453129.26	40.5753012	-104.8287013	0.38	
4402.00	16.980	294.440	4286.23	781.47	344.92	-782.86	3186453.92	1453139.46	40.5753297	-104.8287891	0.96	
4491.00	16.930	294.230	4371.36	805.07	355.62	-806.51	3186430.20	1453149.97	40.5753591	-104.8288742	0.09	
4581.00	16.410	295.320	4457.58	828.47	366.43	-829.95	3186406.67	1453160.61	40.5753888	-104.8289586	0.67	
4670.00	16.960	294.490	4542.83	851.60	377.19	-853.13	3186383.42	1453171.19	40.5754183	-104.8290421	0.67	
4759.00	16.980	294.320	4627.96	875.22	387.92	-876.79	3186359.68	1453181.74	40.5754477	-104.8291272	0.06	
4849.00	17.210	293.410	4713.98	899.37	398.63	-900.98	3186335.41	1453192.26	40.5754771	-104.8292143	0.39	
4938.00	17.090	294.800	4799.02	923.28	409.34	-924.94	3186311.37	1453202.79	40.5755065	-104.8293005	0.48	
5028.00	16.720	293.510	4885.13	947.11	420.05	-948.81	3186287.42	1453213.32	40.5755359	-104.8293865	0.59	
5117.00	17.390	294.220	4970.22	970.94	430.62	-972.68	3186263.47	1453223.70	40.5755649	-104.8294724	0.79	
5207.00	16.410	292.630	5056.33	994.89	441.03	-996.68	3186239.39	1453233.93	40.5755935	-104.8295588	1.20	

REFERENCE WELLPATH IDENTIFICATION			
Operator	BAYSWATER E&P, LLC	Well	BLEHM 5
Field	WELD COUNTY (NAD83/TRUE NORTH)	API	0512351625
Facility	SEC.18-T07N-R66W	Wellbore	BLEHM 5 AWB
Slot	SLOT#05 BLEHM 5 (2631'FSL & 1629'FWL,SEC.18)		

WELLPATH DATA (204 stations)												
MD [ft]	Inclination [°]	Azimuth [°]	TVD [ft]	Vert Sect [ft]	North [ft]	East [ft]	Grid East [US ft]	Grid North [US ft]	Latitude	Longitude	DLS [°/100ft]	Comments
5296.00	17.010	293.380	5141.57	1018.41	451.03	-1020.23	3186215.76	1453243.75	40.5756209	-104.8296436	0.72	
5385.00	15.990	294.450	5226.91	1041.47	461.27	-1043.34	3186192.58	1453253.82	40.5756490	-104.8297268	1.20	
5474.00	16.390	293.710	5312.38	1064.09	471.39	-1066.00	3186169.85	1453263.77	40.5756768	-104.8298083	0.51	
5563.00	16.320	292.790	5397.78	1087.08	481.29	-1089.02	3186146.75	1453273.48	40.5757040	-104.8298912	0.30	
5652.00	16.520	294.930	5483.15	1110.04	491.46	-1112.03	3186123.67	1453283.49	40.5757319	-104.8299740	0.72	
5742.00	17.700	295.410	5569.16	1133.95	502.73	-1135.99	3186099.62	1453294.57	40.5757628	-104.8300603	1.32	
5831.00	17.420	295.370	5654.01	1158.17	514.24	-1160.25	3186075.28	1453305.90	40.5757944	-104.8301476	0.31	
5920.00	16.950	296.460	5739.04	1181.77	525.73	-1183.90	3186051.54	1453317.20	40.5758260	-104.8302328	0.64	
6010.00	17.550	296.070	5824.99	1205.66	537.54	-1207.83	3186027.52	1453328.83	40.5758584	-104.8303189	0.68	
6100.00	17.370	294.570	5910.85	1230.02	549.09	-1232.24	3186003.02	1453340.19	40.5758901	-104.8304068	0.54	
6189.00	17.070	295.020	5995.86	1253.89	560.14	-1256.16	3185979.02	1453351.06	40.5759204	-104.8304929	0.37	
6279.00	17.590	294.350	6081.77	1278.20	571.33	-1280.52	3185954.58	1453362.07	40.5759511	-104.8305806	0.62	
6368.00	16.550	295.060	6166.85	1301.90	582.24	-1304.25	3185930.76	1453372.80	40.5759811	-104.8306660	1.19	
6457.00	17.380	295.060	6251.98	1325.38	593.24	-1327.78	3185907.16	1453383.62	40.5760112	-104.8307507	0.93	
6546.00	17.000	295.130	6337.00	1349.15	604.40	-1351.60	3185883.25	1453394.59	40.5760419	-104.8308364	0.43	
6635.00	16.750	294.470	6422.17	1372.56	615.24	-1375.05	3185859.72	1453405.25	40.5760716	-104.8309209	0.35	
6725.00	16.810	294.300	6508.34	1396.18	625.96	-1398.72	3185835.97	1453415.80	40.5761010	-104.8310061	0.09	
6815.00	17.040	294.390	6594.44	1420.01	636.77	-1422.59	3185812.02	1453426.42	40.5761307	-104.8310920	0.26	
6904.00	16.060	295.470	6679.75	1442.96	647.44	-1445.58	3185788.95	1453436.92	40.5761600	-104.8311748	1.15	
6993.00	16.910	294.680	6765.09	1465.79	658.14	-1468.45	3185765.99	1453447.45	40.5761894	-104.8312571	0.99	
7082.00	17.520	295.480	6850.10	1489.60	669.31	-1492.31	3185742.06	1453458.43	40.5762200	-104.8313430	0.74	
7172.00	18.010	294.780	6935.81	1514.41	680.97	-1517.17	3185717.11	1453469.90	40.5762520	-104.8314325	0.59	
7261.00	17.980	295.640	7020.46	1539.24	692.68	-1542.05	3185692.14	1453481.42	40.5762841	-104.8315220	0.30	
7350.00	23.140	290.560	7103.77	1567.97	704.78	-1570.82	3185663.28	1453493.30	40.5763173	-104.8316256	6.13	
7439.00	30.630	287.250	7183.10	1606.00	717.66	-1608.91	3185625.10	1453505.89	40.5763527	-104.8317627	8.58	
7529.00	40.160	280.220	7256.41	1656.55	729.64	-1659.50	3185574.41	1453517.49	40.5763856	-104.8319449	11.50	
7618.00	49.540	274.730	7319.46	1718.66	737.54	-1721.65	3185512.21	1453524.92	40.5764073	-104.8321686	11.39	
7708.00	58.440	273.390	7372.32	1791.19	742.65	-1794.20	3185439.63	1453529.47	40.5764212	-104.8324297	9.96	
7797.00	66.850	273.710	7413.18	1869.99	747.54	-1873.02	3185360.77	1453533.77	40.5764347	-104.8327135	9.45	
7886.00	73.910	271.070	7443.05	1953.68	751.00	-1956.72	3185277.05	1453536.58	40.5764441	-104.8330148	8.41	

REFERENCE WELLPATH IDENTIFICATION			
Operator	BAYSWATER E&P, LLC	Well	BLEHM 5
Field	WELD COUNTY (NAD83/TRUE NORTH)	API	0512351625
Facility	SEC.18-T07N-R66W	Wellbore	BLEHM 5 AWB
Slot	SLOT#05 BLEHM 5 (2631'FSL & 1629'FWL,SEC.18)		

WELLPATH DATA (204 stations)												
MD [ft]	Inclination [°]	Azimuth [°]	TVD [ft]	Vert Sect [ft]	North [ft]	East [ft]	Grid East [US ft]	Grid North [US ft]	Latitude	Longitude	DLS [°/100ft]	Comments
7975.00	79.850	269.620	7463.24	2040.31	751.50	-2043.36	3185190.42	1453536.43	40.5764455	-104.8333267	6.86	
8065.00	87.010	273.460	7473.54	2129.60	753.93	-2132.66	3185101.10	1453538.18	40.5764521	-104.8336481	9.01	
8154.00	89.820	272.070	7476.00	2218.43	758.22	-2221.51	3185012.22	1453541.79	40.5764639	-104.8339680	3.52	
8243.00	89.850	268.120	7476.26	2307.41	758.36	-2310.49	3184923.25	1453541.26	40.5764643	-104.8342883	4.44	
8333.00	90.490	268.350	7475.99	2397.38	755.59	-2400.45	3184833.32	1453537.81	40.5764566	-104.8346121	0.76	
8422.00	90.150	268.520	7475.49	2486.36	753.16	-2489.41	3184744.37	1453534.70	40.5764499	-104.8349324	0.43	
8512.00	90.340	268.640	7475.11	2576.33	750.93	-2579.38	3184654.42	1453531.79	40.5764438	-104.8352563	0.25	
8601.00	90.220	268.570	7474.67	2665.32	748.76	-2668.36	3184565.47	1453528.94	40.5764378	-104.8355765	0.16	
8690.00	89.660	269.280	7474.77	2754.30	747.09	-2757.34	3184476.51	1453526.60	40.5764332	-104.8358969	1.02	
8780.00	89.850	269.060	7475.15	2844.30	745.79	-2847.33	3184386.53	1453524.61	40.5764296	-104.8362208	0.32	
8869.00	88.950	268.940	7476.08	2933.29	744.24	-2936.31	3184297.57	1453522.38	40.5764253	-104.8365411	1.02	
8959.00	90.310	269.280	7476.66	3023.27	742.84	-3026.29	3184207.60	1453520.30	40.5764214	-104.8368650	1.56	
9048.00	90.090	269.020	7476.35	3112.27	741.52	-3115.28	3184118.63	1453518.30	40.5764178	-104.8371854	0.38	
9138.00	90.310	269.110	7476.04	3202.26	740.05	-3205.27	3184028.66	1453516.15	40.5764137	-104.8375093	0.26	
9227.00	90.400	269.100	7475.49	3291.25	738.66	-3294.26	3183939.68	1453514.08	40.5764099	-104.8378297	0.10	
9317.00	90.220	269.220	7475.00	3381.25	737.34	-3384.25	3183849.71	1453512.08	40.5764062	-104.8381536	0.24	
9406.00	90.250	269.070	7474.64	3470.24	736.01	-3473.24	3183760.74	1453510.07	40.5764025	-104.8384739	0.17	
9496.00	90.650	269.140	7473.93	3560.23	734.61	-3563.22	3183670.77	1453507.99	40.5763987	-104.8387979	0.45	
9585.00	90.770	269.090	7472.83	3649.22	733.23	-3652.21	3183581.80	1453505.93	40.5763948	-104.8391182	0.15	
9675.00	90.090	269.920	7472.15	3739.21	732.46	-3742.20	3183491.82	1453504.47	40.5763927	-104.8394421	1.19	
9765.00	90.220	270.050	7471.91	3829.21	732.43	-3832.20	3183401.82	1453503.77	40.5763926	-104.8397661	0.20	
9855.00	90.180	270.300	7471.59	3919.21	732.71	-3922.20	3183311.83	1453503.36	40.5763933	-104.8400901	0.28	
9944.00	90.030	270.090	7471.43	4008.21	733.01	-4011.20	3183222.83	1453502.98	40.5763941	-104.8404105	0.29	
10033.00	90.180	270.050	7471.27	4097.21	733.12	-4100.20	3183133.84	1453502.41	40.5763943	-104.8407309	0.17	
10123.00	90.250	270.020	7470.93	4187.21	733.17	-4190.20	3183043.84	1453501.79	40.5763944	-104.8410548	0.08	
10213.00	90.220	270.190	7470.56	4277.20	733.34	-4280.19	3182953.85	1453501.27	40.5763949	-104.8413788	0.19	
10301.00	90.550	270.190	7469.97	4365.20	733.63	-4368.19	3182865.85	1453500.89	40.5763956	-104.8416956	0.37	
10390.00	90.370	270.220	7469.25	4454.19	733.95	-4457.19	3182776.86	1453500.53	40.5763964	-104.8420160	0.21	
10480.00	90.310	270.170	7468.72	4544.19	734.26	-4547.19	3182686.86	1453500.15	40.5763972	-104.8423399	0.09	
10569.00	90.460	270.220	7468.12	4633.18	734.56	-4636.18	3182597.87	1453499.78	40.5763980	-104.8426603	0.18	

REFERENCE WELLPATH IDENTIFICATION			
Operator	BAYSWATER E&P, LLC	Well	BLEHM 5
Field	WELD COUNTY (NAD83/TRUE NORTH)	API	0512351625
Facility	SEC.18-T07N-R66W	Wellbore	BLEHM 5 AWB
Slot	SLOT#05 BLEHM 5 (2631'FSL & 1629'FWL,SEC.18)		

WELLPATH DATA (204 stations)

MD [ft]	Inclination [°]	Azimuth [°]	TVD [ft]	Vert Sect [ft]	North [ft]	East [ft]	Grid East [US ft]	Grid North [US ft]	Latitude	Longitude	DLS [°/100ft]	Comments
10659.00	90.090	269.980	7467.69	4723.18	734.72	-4726.18	3182507.87	1453499.25	40.5763984	-104.8429843	0.49	
10749.00	90.180	270.110	7467.48	4813.18	734.79	-4816.18	3182417.88	1453498.64	40.5763986	-104.8433083	0.18	
10839.00	90.520	270.340	7466.93	4903.18	735.14	-4906.18	3182327.88	1453498.31	40.5763995	-104.8436322	0.46	
10928.00	90.520	270.350	7466.12	4992.17	735.68	-4995.17	3182238.89	1453498.17	40.5764009	-104.8439526	0.01	
11017.00	90.220	270.240	7465.55	5081.16	736.13	-5084.17	3182149.89	1453497.95	40.5764021	-104.8442730	0.36	
11106.00	90.400	270.260	7465.06	5170.16	736.52	-5173.17	3182060.90	1453497.66	40.5764031	-104.8445933	0.20	
11196.00	90.220	270.310	7464.58	5260.15	736.97	-5263.17	3181970.90	1453497.43	40.5764043	-104.8449173	0.21	
11285.00	90.520	270.320	7464.00	5349.15	737.46	-5352.16	3181881.91	1453497.24	40.5764056	-104.8452377	0.34	
11375.00	90.400	270.350	7463.28	5439.14	737.99	-5442.16	3181791.91	1453497.08	40.5764070	-104.8455616	0.14	
11465.00	90.680	270.610	7462.43	5529.13	738.74	-5532.15	3181701.92	1453497.15	40.5764090	-104.8458856	0.42	
11554.00	90.950	270.450	7461.17	5618.11	739.56	-5621.14	3181612.93	1453497.30	40.5764112	-104.8462059	0.35	
11643.00	90.580	270.470	7459.98	5707.10	740.28	-5710.13	3181523.94	1453497.34	40.5764131	-104.8465263	0.42	
11732.00	90.620	270.520	7459.05	5796.08	741.05	-5799.12	3181434.95	1453497.43	40.5764152	-104.8468466	0.07	
11821.00	89.850	270.390	7458.68	5885.08	741.75	-5888.11	3181345.95	1453497.46	40.5764170	-104.8471670	0.88	
11910.00	89.750	270.330	7458.99	5974.07	742.31	-5977.11	3181256.96	1453497.34	40.5764185	-104.8474874	0.13	
12000.00	90.090	269.420	7459.12	6064.07	742.12	-6067.11	3181166.97	1453496.46	40.5764179	-104.8478113	1.08	
12090.00	90.580	269.560	7458.59	6154.07	741.31	-6157.11	3181076.98	1453494.98	40.5764157	-104.8481353	0.57	
12179.00	91.200	270.210	7457.21	6243.06	741.14	-6246.09	3180988.00	1453494.12	40.5764151	-104.8484556	1.01	
12269.00	90.680	269.710	7455.73	6333.04	741.07	-6336.08	3180898.02	1453493.37	40.5764149	-104.8487796	0.80	
12359.00	90.490	269.410	7454.81	6423.04	740.38	-6426.07	3180808.04	1453492.00	40.5764129	-104.8491035	0.39	
12449.00	90.520	269.650	7454.02	6513.03	739.64	-6516.07	3180718.05	1453490.58	40.5764108	-104.8494275	0.27	
12538.00	90.620	269.790	7453.13	6602.03	739.21	-6605.06	3180629.07	1453489.46	40.5764096	-104.8497479	0.19	
12627.00	92.400	269.840	7450.79	6690.99	738.92	-6694.03	3180540.11	1453488.50	40.5764087	-104.8500681	2.00	
12716.00	90.710	269.620	7448.37	6779.96	738.50	-6782.99	3180451.16	1453487.41	40.5764075	-104.8503884	1.91	
12805.00	90.680	269.470	7447.29	6868.95	737.79	-6871.98	3180362.18	1453486.02	40.5764055	-104.8507087	0.17	
12894.00	90.920	270.750	7446.05	6957.94	737.97	-6960.97	3180273.19	1453485.52	40.5764059	-104.8510291	1.46	
12984.00	91.020	270.890	7444.53	7047.91	739.25	-7050.95	3180183.21	1453486.12	40.5764093	-104.8513530	0.19	
13073.00	90.620	269.630	7443.25	7136.90	739.66	-7139.94	3180094.22	1453485.85	40.5764104	-104.8516733	1.49	
13162.00	90.550	269.560	7442.35	7225.89	739.03	-7228.93	3180005.24	1453484.54	40.5764086	-104.8519936	0.11	
13251.00	90.280	269.780	7441.70	7314.89	738.52	-7317.92	3179916.25	1453483.35	40.5764071	-104.8523140	0.39	

REFERENCE WELLPATH IDENTIFICATION				
Operator	BAYSWATER E&P, LLC		Well	BLEHM 5
Field	WELD COUNTY (NAD83/TRUE NORTH)		API	0512351625
Facility	SEC.18-T07N-R66W		Wellbore	BLEHM 5 AWB
Slot	SLOT#05 BLEHM 5 (2631'FSL & 1629'FWL,SEC.18)			

WELLPATH DATA (204 stations)

MD [ft]	Inclination [°]	Azimuth [°]	TVD [ft]	Vert Sect [ft]	North [ft]	East [ft]	Grid East [US ft]	Grid North [US ft]	Latitude	Longitude	DLS [°/100ft]	Comments
13340.00	90.060	269.110	7441.44	7403.89	737.65	-7406.92	3179827.27	1453481.82	40.5764047	-104.8526344	0.79	
13429.00	89.940	269.250	7441.44	7492.88	736.38	-7495.91	3179738.29	1453479.87	40.5764011	-104.8529547	0.21	
13518.00	89.380	269.310	7441.96	7581.88	735.26	-7584.90	3179649.32	1453478.07	40.5763980	-104.8532751	0.63	
13607.00	91.510	269.580	7441.27	7670.87	734.40	-7673.89	3179560.34	1453476.53	40.5763955	-104.8535954	2.41	
13696.00	93.260	269.760	7437.57	7759.79	733.89	-7762.81	3179471.43	1453475.34	40.5763940	-104.8539155	1.98	
13785.00	94.130	269.940	7431.83	7848.60	733.65	-7851.62	3179382.62	1453474.44	40.5763933	-104.8542352	1.00	
13874.00	93.910	271.920	7425.59	7937.36	735.10	-7940.39	3179293.85	1453475.20	40.5763972	-104.8545547	2.23	
13963.00	93.910	270.180	7419.53	8026.12	736.72	-8029.16	3179205.07	1453476.16	40.5764016	-104.8548743	1.95	
14053.00	93.760	269.400	7413.51	8115.92	736.39	-8118.96	3179115.28	1453475.14	40.5764006	-104.8551976	0.88	
14143.00	94.900	269.260	7406.71	8205.66	735.34	-8208.69	3179025.56	1453473.41	40.5763976	-104.8555206	1.28	
14232.00	95.110	269.840	7398.95	8294.32	734.65	-8297.35	3178936.91	1453472.04	40.5763956	-104.8558397	0.69	
14322.00	94.770	269.630	7391.20	8383.99	734.23	-8387.02	3178847.26	1453470.95	40.5763944	-104.8561625	0.44	
14411.00	95.860	269.480	7382.95	8472.60	733.55	-8475.63	3178758.65	1453469.58	40.5763924	-104.8564815	1.24	
14500.00	96.480	270.010	7373.39	8561.09	733.15	-8564.11	3178670.18	1453468.52	40.5763913	-104.8568000	0.91	
14590.00	96.510	269.970	7363.21	8650.51	733.14	-8653.53	3178580.76	1453467.82	40.5763911	-104.8571219	0.06	
14679.00	96.600	269.990	7353.05	8738.92	733.10	-8741.95	3178492.35	1453467.12	40.5763910	-104.8574402	0.10	
14769.00	93.760	269.740	7344.92	8828.55	732.89	-8831.57	3178402.73	1453466.23	40.5763903	-104.8577628	3.17	
14858.00	94.310	267.810	7338.66	8917.31	731.00	-8920.33	3178314.00	1453463.65	40.5763850	-104.8580823	2.25	
14947.00	94.000	268.390	7332.21	9006.04	728.05	-9009.05	3178225.31	1453460.04	40.5763768	-104.8584017	0.74	
15037.00	90.710	267.760	7328.51	9095.91	725.03	-9098.91	3178135.48	1453456.33	40.5763685	-104.8587252	3.72	
15126.00	90.980	268.410	7327.20	9184.86	722.06	-9187.85	3178046.56	1453452.68	40.5763602	-104.8590453	0.79	
15214.00	90.980	267.780	7325.69	9272.81	719.13	-9275.78	3177958.65	1453449.09	40.5763521	-104.8593619	0.72	
15303.00	90.580	268.340	7324.48	9361.76	716.12	-9364.72	3177869.74	1453445.40	40.5763437	-104.8596820	0.77	
15392.00	89.510	269.100	7324.41	9450.74	714.13	-9453.70	3177780.79	1453442.74	40.5763382	-104.8600023	1.47	
15481.00	91.380	270.080	7323.72	9539.74	713.50	-9542.69	3177691.81	1453441.43	40.5763363	-104.8603227	2.37	
15570.00	91.380	269.670	7321.58	9628.71	713.30	-9631.66	3177602.84	1453440.55	40.5763357	-104.8606430	0.46	
15659.00	91.230	270.200	7319.55	9717.69	713.20	-9720.64	3177513.87	1453439.78	40.5763353	-104.8609633	0.62	
15748.00	91.390	269.040	7317.52	9806.66	712.61	-9809.61	3177424.90	1453438.51	40.5763336	-104.8612835	1.32	
15836.00	91.320	270.030	7315.44	9894.63	711.90	-9897.59	3177336.94	1453437.13	40.5763316	-104.8616002	1.13	
15925.00	90.890	269.330	7313.72	9983.62	711.40	-9986.57	3177247.97	1453435.96	40.5763301	-104.8619205	0.92	



Actual Wellpath Report

BLEHM 5 AWP

Page 8 of 11



REFERENCE WELLPATH IDENTIFICATION			
Operator	BAYSWATER E&P, LLC	Well	BLEHM 5
Field	WELD COUNTY (NAD83/TRUE NORTH)	API	0512351625
Facility	SEC.18-T07N-R66W	Wellbore	BLEHM 5 AWB
Slot	SLOT#05 BLEHM 5 (2631'FSL & 1629'FWL,SEC.18)		

WELLPATH DATA (204 stations) † = interpolated, ‡ = extrapolated station												
MD [ft]	Inclination [°]	Azimuth [°]	TVD [ft]	Vert Sect [ft]	North [ft]	East [ft]	Grid East [US ft]	Grid North [US ft]	Latitude	Longitude	DLS [°/100ft]	Comments
16014.00	91.780	269.430	7311.65	10072.59	710.44	-10075.54	3177159.01	1453434.32	40.5763274	-104.8622408	1.01	
16102.00	92.030	270.170	7308.72	10160.54	710.13	-10163.49	3177071.07	1453433.34	40.5763264	-104.8625574	0.89	
16191.00	90.920	269.400	7306.43	10249.51	709.80	-10252.45	3176982.11	1453432.33	40.5763254	-104.8628777	1.52	
16279.00	90.830	269.490	7305.09	10337.50	708.94	-10340.44	3176894.14	1453430.81	40.5763230	-104.8631944	0.14	
16368.00	91.290	269.870	7303.44	10426.48	708.45	-10429.42	3176805.16	1453429.64	40.5763215	-104.8635147	0.67	
16457.00	90.580	269.250	7301.99	10515.47	707.76	-10518.41	3176716.19	1453428.28	40.5763195	-104.8638350	1.06	
16547.00	90.710	269.880	7300.97	10605.46	707.08	-10608.40	3176626.21	1453426.91	40.5763175	-104.8641590	0.71	
16636.00	90.000	269.860	7300.42	10694.46	706.88	-10697.40	3176537.22	1453426.03	40.5763169	-104.8644794	0.80	
16726.00	90.180	269.430	7300.28	10784.46	706.32	-10787.39	3176447.23	1453424.79	40.5763152	-104.8648033	0.52	
16816.00	90.310	269.810	7299.90	10874.46	705.72	-10877.39	3176357.24	1453423.51	40.5763135	-104.8651273	0.45	
16905.00	90.490	269.260	7299.27	10963.45	705.00	-10966.39	3176268.26	1453422.11	40.5763114	-104.8654477	0.65	
16994.00	89.660	270.420	7299.16	11052.45	704.75	-11055.38	3176179.27	1453421.18	40.5763106	-104.8657680	1.60	
17083.00	91.510	271.760	7298.25	11141.42	706.45	-11144.36	3176090.29	1453422.20	40.5763151	-104.8660883	2.57	
17173.00	90.890	272.230	7296.36	11231.33	709.58	-11234.28	3176000.34	1453424.65	40.5763236	-104.8664120	0.86	
17261.00	90.490	270.630	7295.30	11319.28	711.77	-11322.24	3175912.37	1453426.18	40.5763295	-104.8667287	1.87	
17351.00	89.690	269.800	7295.16	11409.28	712.11	-11412.24	3175822.37	1453425.83	40.5763304	-104.8670527	1.28	
17440.00	90.800	270.010	7294.78	11498.28	711.96	-11501.24	3175733.38	1453425.01	40.5763298	-104.8673730	1.27	
17529.00	90.680	270.040	7293.63	11587.27	712.00	-11590.23	3175644.39	1453424.37	40.5763298	-104.8676934	0.14	
17618.00	89.970	269.650	7293.13	11676.27	711.76	-11679.23	3175555.40	1453423.45	40.5763291	-104.8680138	0.91	
17708.00	90.150	269.540	7293.03	11766.26	711.13	-11769.23	3175465.42	1453422.13	40.5763272	-104.8683377	0.23	
17798.00	91.110	269.550	7292.04	11856.26	710.41	-11859.22	3175375.44	1453420.73	40.5763251	-104.8686617	1.07	
17887.00	91.080	268.730	7290.34	11945.24	709.08	-11948.19	3175286.48	1453418.72	40.5763213	-104.8689820	0.92	
17981.00	91.110	266.950	7288.55	12039.16	705.53	-12042.10	3175192.60	1453414.47	40.5763115	-104.8693200	1.89	LAST BH MWD SURVEY
18005.00‡	91.110	266.950	7288.08	12063.13	704.26	-12066.07	3175168.65	1453413.01	40.5763079	-104.8694063	0.00	PROJECTION TO BIT

REFERENCE WELLPATH IDENTIFICATION			
Operator	BAYSWATER E&P, LLC	Well	BLEHM 5
Field	WELD COUNTY (NAD83/TRUE NORTH)	API	0512351625
Facility	SEC.18-T07N-R66W	Wellbore	BLEHM 5 AWB
Slot	SLOT#05 BLEHM 5 (2631'FSL & 1629'FWL,SEC.18)		

TARGETS								
Name	TVD [ft]	North [ft]	East [ft]	Grid East [US ft]	Grid North [US ft]	Latitude	Longitude	Shape
SEC.13-T07N-R67W	-5.00	28.78	-52.78	3187186.37	1452828.88	40.5744620	-104.8261610	polygon
	2D Polygon: dimensions not calculated							
SEC.14-T07N-R67W	-5.00	28.78	-52.78	3187186.37	1452828.88	40.5744620	-104.8261610	polygon
	2D Polygon: dimensions not calculated							
SEC.18-T07N-R66W	-5.00	28.78	-52.78	3187186.37	1452828.88	40.5744620	-104.8261610	polygon
	2D Polygon: dimensions not calculated							
BLEHM 2-11 (SB 460'N/S & 150'E/W)	-3.00	28.78	-52.78	3187186.37	1452828.88	40.5744620	-104.8261610	polygon
	2D Polygon: dimensions not calculated							
BLEHM 5 BHL REV-2(1870'FNL & 160'FWL,SEC.14)	7294.00	703.89	-12021.54	3175213.17	1453412.98	40.5763070	-104.8692460	point
BLEHM 5 BHL REV-1(1870'FNL & 160'FWL,SEC.14)	7304.00	703.89	-12021.54	3175213.17	1453412.98	40.5763070	-104.8692460	point
BLEHM 5 LP REV-2(1871'FNL & 460'FEL,SEC.13)	7465.00	743.95	-2086.21	3185147.62	1453528.55	40.5764248	-104.8334809	point
BLEHM 5 LP REV-1(1870'FNL & 160'FEL,SEC.13)	7466.00	745.11	-1786.21	3185447.59	1453531.99	40.5764280	-104.8324010	point



Actual Wellpath Report

BLEHM 5 AWP

Page 10 of 11



REFERENCE WELLPATH IDENTIFICATION			
Operator	BAYSWATER E&P, LLC	Well	BLEHM 5
Field	WELD COUNTY (NAD83/TRUE NORTH)	API	0512351625
Facility	SEC.18-T07N-R66W	Wellbore	BLEHM 5 AWB
Slot	SLOT#05 BLEHM 5 (2631'FSL & 1629'FWL,SEC.18)		

WELLPATH COMPOSITION - Ref Wellbore: BLEHM 5 AWB Ref Wellpath: BLEHM 5 AWP					
Start MD [ft]	End MD [ft]	Positional Uncertainty Model	Log Name/Comment	Wellbore	Survey Date
23.00	1505.00	BH NaviTrak (2019) (Axial)	BH NaviTrak (2019) (Axial) 13-1/2" <135 - 1505>	BLEHM 5 AWB	12/10/2021
1505.00	18005.00	OWSG MWD rev2 + IFR1 + Multi-Station Correction	OWSG MWD rev2 + IFR1 + MS 8-1/2" <1631 - 17981>	BLEHM 5 AWB	2/3/2022



Actual Wellpath Report

BLEHM 5 AWP

Page 11 of 11



REFERENCE WELLPATH IDENTIFICATION

Operator	BAYSWATER E&P, LLC	Well	BLEHM 5
Field	WELD COUNTY (NAD83/TRUE NORTH)	API	0512351625
Facility	SEC.18-T07N-R66W	Wellbore	BLEHM 5 AWB
Slot	SLOT#05 BLEHM 5 (2631'FSL & 1629'FWL,SEC.18)		

WELLPATH COMMENTS

MD [ft]	Inclination [°]	Azimuth [°]	TVD [ft]	Comment
135.00	0.140	30.310	135.00	FIRST BH SURFACE MWD SURVEY
1505.00	6.170	293.290	1500.82	LAST BH SURFACE MWD SURVEY
1631.00	6.040	290.690	1626.10	FIRST BH MWD SURVEY
17981.00	91.110	266.950	7288.55	LAST BH MWD SURVEY
18005.00	91.110	266.950	7288.08	PROJECTION TO BIT