



# **Bayswater Exploration & Production LLC LONG STRING POST JOB REPORT**

**Blehm #5 05-123-51625  
S:18 T:7N R:66W Weld CO**

CallSheet #: 80100  
Proposal #: 57664



**LONG STRING Post Job Report**

**Attention:** Jeff Overman | [joverman@bayswater.us](mailto:joverman@bayswater.us)  
Bayswater Exploration & Production LLC  
730 17TH STREET | DENVER, CO 80202

---

Dear Jeff Overman,

Thank you for the opportunity to provide cementing services on this well. American Cementing strives to achieve complete customer satisfaction. If you have any questions regarding the services or data provided, please contact American Cementing at any time.

Sincerely,

**Jason Creel**

Field Engineer Lead | (307) 256-0306 | [jason.creel@americacementing.com](mailto:jason.creel@americacementing.com)

**Field Office**      1716 E Allison Rd, Cheyenne, WY 82007  
Phone: (307) 414-0049

## Job Details & Summary

### Geometry

Type	Function	OD (in)	ID (in)	Weight (lb/ft)	Top (ft)	Bottom (ft)	Excess (%)
Casing	Outer	9.625	8.921	36	0	1549	0
Open Hole	Outer		8.5		1549	18005	7
Casing	Inner	5.5	4.778	20	0	17991	0

### Equipment / People

Unit Type	Unit
Field Storage Silo	FSS(CTS)-459
Field Storage Silo	FSS(CTS)-454
Field Storage Silo	FSS(CTS)-449
Cement Trailer Float	CTF-408
Cement Trailer Float	CTF-338
Cement Trailer Float	CTF-193
AS Cement Trailer Float	CTF(FTF)-031
AS Cement Trailer Float	CTF-9054
AS Cement Trailer Float	CTF-018
Cement Trailer Float	CTF-278
Cement Trailer Float	CTF-005
Cement Pump Float	CPF-184
Cement Utility Float	CUF(FIF)-163

### Timing

Event	Date/Time
Call Out	2/4/2022 12:00
Depart Facility	2/4/2022 14:00
On Location	2/4/2022 15:30
Rig Up Iron	2/4/2022 15:45
Job Started	2/4/2022 21:13
Job Completed	2/5/2022 00:38
Rig Down Iron	2/5/2022 01:00
Depart Location	2/5/2022 03:00

### General Job Information

Metrics	Value
Well Fluid Density	10 lb/gal
Well Fluid Type	OBM
Rig Circulation Vol	800 bbls
Rig Circulation Time	3 hours
Calculated Displacement	391.7 bbls
Actual Displacement	391.7 bbls
Total Spacer to Surface	80 bbls
Total CMT to Surface	37 bbls

### Casing Equipment

Type	Description	Qty
CENTRALIZER,5-1/2"NON-WELD	Solid Body	210

### Job Details

Metrics	Value
Flare Prior to Job	Yes
Flare Prior to Job	1220 units
Flare During Job	No
Flare During Job	0 units
Flare at End of Job	No
Flare at End of Job	0 units
Well Full Prior to Job	Yes
Well Fluid Density Into Well	10 lb/gal
Well Fluid Density Out of Well	10 lb/gal

### Job Details (cont.)

Metrics	Value
BHCT	225 °F
BHST	225 °F

### Water Analysis

Metrics	Value	Recommended
Water Source	Upright Rig Tank	
Temperature	65 °F	50-80 °F
pH Level	7	5.5-8.5
Chlorides	0 mg/L	0-3000 mg/L
Total Alkalinity	240	0-1000
Total Hardness	0 mg/L	0-500 mg/L
Carbonates	N/A mg/L	0-100 mg/L
Sulfates	>200 mg/L	0-1500 mg/L
Potassium	0 mg/L	0-3000 mg/L
Iron	0 mg/L	0-300 mg/L

### Circulation

Lost Circulation Experienced
No

### Job Execution Information

Fluid	Product	Function	Density (lb/gal)	Yield (ft <sup>3</sup> /sk)	Water Rq. (gal/sk)	Water Rq. (gal/bbl)	Volume (sks)	Volume (bbl)	Designed Top (ft)
1	EZ Spacer II	Spacer	12.00			29.92		40.00	0
2	EZ Spacer II	Spacer	11.50			29.92		20.00	0
3	EZ Spacer II	Spacer	11.00			29.92		20.00	0
4	ACem P100.3.01C	Lead	13.20	1.83	9.87		996.00	323.96	0
5	ACem P50.6.02C	Tail	13.50	1.48	7.45		1771.00	465.79	6566
6	Retarded Water + Chems	Displacement	8.37			41.43		10.00	17516
7	Water + Chems	DisplacementFinal	8.37			41.53		381.00	0

### Job Fluid Details

Fluid	Type	Fluid	Product	Function	Conc.	Uom
1	Spacer	EZ Spacer II	WEIGHTING ADDITIVE, W-11	Heavyweight	242.31	lb/bbl
1	Spacer	EZ Spacer II	GW-86	Viscosifier	1.20	lb/bbl
1	Spacer	EZ Spacer II	R-31	Retarder	0.50	lb/bbl
1	Spacer	EZ Spacer II	R-7C	Retarder	2.00	lb/bbl
1	Spacer	EZ Spacer II	Surfactant, S-801c	Surfactant	1.00	gal/bbl
2	Spacer	EZ Spacer II	WEIGHTING ADDITIVE, W-11	Heavyweight	242.31	lb/bbl
2	Spacer	EZ Spacer II	GW-86	Viscosifier	1.20	lb/bbl
2	Spacer	EZ Spacer II	R-31	Retarder	0.50	lb/bbl
2	Spacer	EZ Spacer II	R-7C	Retarder	2.00	lb/bbl
2	Spacer	EZ Spacer II	Surfactant, S-801c	Surfactant	1.00	gal/bbl
3	Spacer	EZ Spacer II	WEIGHTING ADDITIVE, W-11	Heavyweight	242.31	lb/bbl
3	Spacer	EZ Spacer II	GW-86	Viscosifier	1.20	lb/bbl
3	Spacer	EZ Spacer II	R-31	Retarder	0.50	lb/bbl
3	Spacer	EZ Spacer II	R-7C	Retarder	2.00	lb/bbl
3	Spacer	EZ Spacer II	Surfactant, S-801c	Surfactant	1.00	gal/bbl
4	Lead	ACem P100.3.01C	ASTM TYPE III	Cement	100.00	%
4	Lead	ACem P100.3.01C	EC-2	BondEnhancer	3.00	%BWOB
4	Lead	ACem P100.3.01C	FL-66	FluidLoss	0.50	%BWOB
4	Lead	ACem P100.3.01C	FP-24	Defoamer	0.30	%BWOB
4	Lead	ACem P100.3.01C	GW-86	Viscosifier	0.10	%BWOB



Fluid	Type	Fluid	Product	Function	Conc.	Uom
4	Lead	ACem P100.3.01C	SR-20	Retarder	0.35	%BWOB
5	Tail	ACem P50.6.02C	CLASS G	Cement	50.00	%
5	Tail	ACem P50.6.02C	FLY ASH (ROCKIES)	Extender	50.00	%
5	Tail	ACem P50.6.02C	BENTONITE	Viscosifier	2.00	%BWOB
5	Tail	ACem P50.6.02C	FL-66	FluidLoss	0.20	%BWOB
5	Tail	ACem P50.6.02C	FP-24	Defoamer	0.30	%BWOB
5	Tail	ACem P50.6.02C	GW-86	Viscosifier	0.10	%BWOB
5	Tail	ACem P50.6.02C	SR-20	Retarder	0.08	%BWOB
5	Tail	ACem P50.6.02C	STATIC FREE	Other	0.01	lb/sk
6	Displacement	Retarded Water + Chems	BIOCIDE,BIOC11139W	Biocide	0.01	gal/bbl
6	Displacement	Retarded Water + Chems	CI-27	Other	0.21	gal/bbl
6	Displacement	Retarded Water + Chems	OXYGEN SCAVENGER, OS-30	Other	0.17	gal/bbl
6	Displacement	Retarded Water + Chems	ResCare CS-2	ClayProtection	0.08	gal/bbl
6	Displacement	Retarded Water + Chems	SR-61L	Retarder	0.10	gal/bbl
7	DisplacementFinal	Water + Chems	BIOCIDE,BIOC11139W	Biocide	0.01	gal/bbl
7	DisplacementFinal	Water + Chems	CI-27	Other	0.21	gal/bbl
7	DisplacementFinal	Water + Chems	OXYGEN SCAVENGER, OS-30	Other	0.17	gal/bbl
7	DisplacementFinal	Water + Chems	ResCare CS-2	ClayProtection	0.08	gal/bbl

## Job Logs

Line	Event	Date (MM/DD/YY)	Time (HH:MM)	Density (lb/gal)	Pump Rate (bpm)	Pump Volume (bbls)	Pipe Pressure (psi)	Comment
1	Callout	2/4/2022	12:00					Crew was called out
2	Depart Facility	2/4/2022	14:00					Crew departed American Cementing Yard
3	Arrive On Location	2/4/2022	15:30					Crew Arrived on Location
4	Rig Up Iron	2/4/2022	15:45					ACC spotted in equipment and rigged up Iron and hoses
5	Safety Meeting	2/4/2022	20:45					ACC has safety meeting with Rig Crew, and Company Representative
6	Pressure Test Lines	2/4/2022	21:13				5600	Pressuer tested lines to 5600 psi
7	Pump Spacer	2/4/2022	21:27	12	5		700	Pumped EZ II Spacer @ 12 lb. (Pumped total of 40 bbls.)
8	Pump Spacer	2/4/2022	21:36	11.5	5	40	600	At 40 bbls Away in EZ II Spacer, dropped density to 11.5 lb. ( Pumped total of 20 bbls.)
9	Pump Spacer	2/4/2022	21:41	11	5	60	600	At 60 bbls. Away in EZ II Spacer, dropped density to 11 lb. (Pumped total of 20 bbls.)
10	Pump Lead Cement	2/4/2022	21:46	13.2	8	324.6	700	Pumped 324.6 bbls. Of Lead CMT (996 sks, 1.83 yld, 9.9 gal/sk, 13.2 ppg) @ 8 bpm with 700 psi
11	Pump Tail Cement	2/4/2022	22:29	13.5	8	466.8	750	Pumped 466.8 bbls. Of Tail CMT (1771 sks, 1.48 yld, 7.4 gal/sk, 13.5 ppg) @ 8 bpm with 750 psi
12	Shutdown	2/4/2022	23:35					Shutdown pumping CMT
13	Clean Pumps and Lines	2/4/2022	23:38					Clean pump and lines to open top
14	Drop Top Plug	2/4/2022	23:43					Drop Top Plug
15	Pump Displacement	2/4/2022	23:47	8.34	10	10	700	Started Displacement @ 10 bpm with first 10 bbls of SR-61, plus Chems with 700 psi
16	Spacer to Surface	2/5/2022	00:12	8.34		274		At 274 bbls. Of Fresh Water Displacement got Spacer back to Surface, Shutdown for Rig to Swap Return lines to open tops
17	Came Back Online	2/5/2022	00:14	8.34	8		3200	Came back Online @ 8 bpm with 3200 psi
18	Cement to Surface	2/5/2022	00:29	8.34	8	354	3200	At 354 bbls. Away in Fresh Water Displacement got Cement to Surface
19	Slow Down Rate	2/5/2022	00:33	8.34	4	375	2500	Slowed Rate to 4 bpm at 375 bbls. Away in Displacement to Lang Plug with 2500 psi
20	Land Plug	2/5/2022	00:36	8.34		391	2500	At 391 bbls Landed Plug, FC Pressure was 2500, BP to 3300 psi
21	Check Floats	2/5/2022	00:39			4.5		Checked Floats, got back 4.5 bbls.
22	Rigged Down	2/5/2022	01:00					ACC Starts Rigging Down Equipment and Iron
23	Depart Location	2/5/2022	03:00					ACC Departs Location
24	Other	2/5/2022	03:01					Total CMT to Surface 37 bbls.
25	Other	2/5/2022	03:02					Total Spacer to Surface 80 bbls.

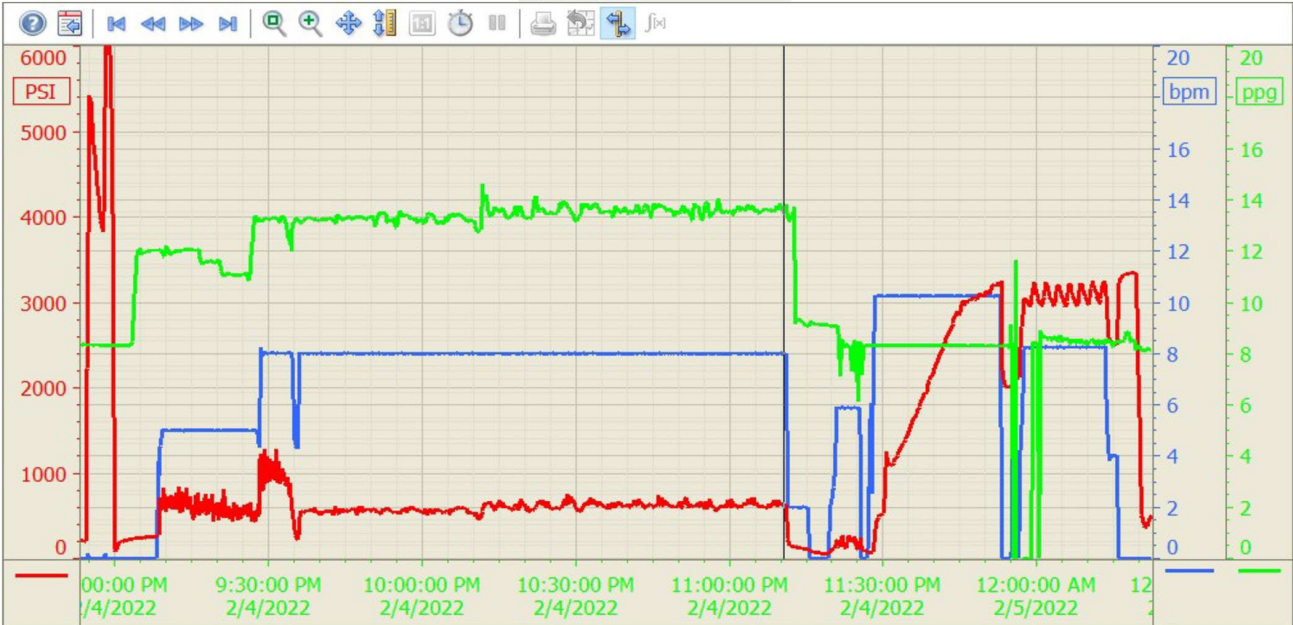
# Pump Diagrams

Summary Trend

Bayswater Exp. 5



Lease: Blehm



2/5/2022 1:22:42 AM