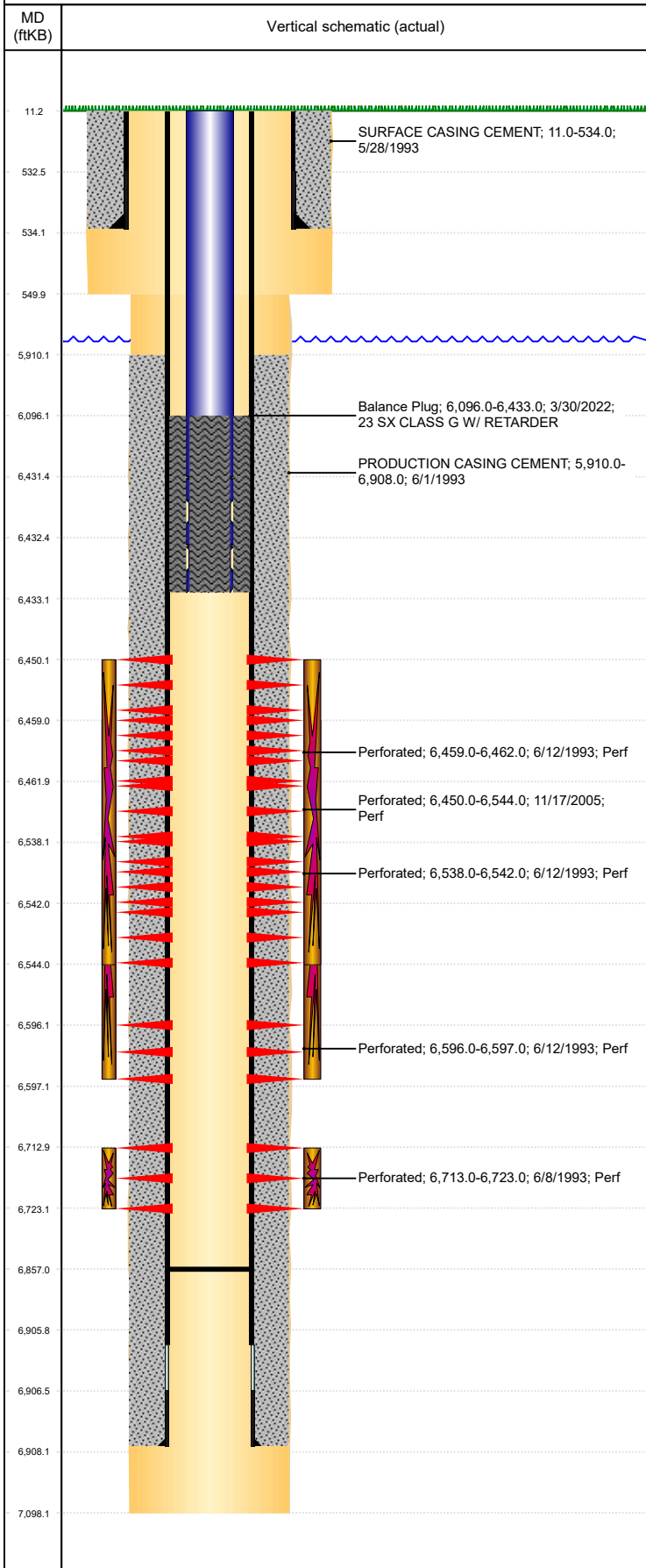


Well Name: MILLAGE 12-05

VERTICAL, ORIGINAL HOLE, 4/11/2022 10:10:14 AM



Well Header									
API 05-123-17059		Business Unit DJ BASIN			District 15		Well Config VERTICAL		
KB - GL / MSL (ft... 11.00		Spud Date 5/28/1993		P & A Date		Well Production Status TA			SoRT Yes
Comment POSS FRAC'D INTO 1/04 BY MILLAGE 22-12, FISH @ 6725 11/15/05									
DISCREPANCIES: DR RPT TD DATE 6/1/1993; ST RPT TD DATE 6/2/1993. DR RPT SURF DEPTH @ 550' & 549'									
SCREENED OUT AND INSTALL MASTER VALVE									
Surface Location (Congressional)									
Qtr 3 SW	Qtr 4 NW	Section 12	Twonshp 4	Twonsh... N	Range 64	Rng E/... W	Actual Latitude (°) 40.32839942	Actual Longitude (°) -104.50669531	
Wellbore Sections									
Section Des			Size (in)			Act Top, MD (ftKB)		Act Btm, MD (ftKB)	
SURFACE			12 1/4			11		550	
PRODUCTION			7 7/8			550		7,098	
Casing Strings									
Csg Des		Run Date		OD (in)	Wt/Len (lb/ft)	Grade	Top, MD (ftKB)	MD (ftKB)	
Surface		5/28/1993		8 5/8	23.00	M-50	11.0	534.0	
Production		6/1/1993		4 1/2	11.60	M-75	11.0	6,908.0	
Cement									
Des				Start Date		Top (ftKB)		Btm (ftKB)	
SURFACE CASING CEMENT				5/28/1993		11.0		534.0	
PRODUCTION CASING CEMENT				6/1/1993		5,910.0		6,908.0	
Balance Plug				3/30/2022		6,096.0		6,433.0	
Zone Statuses									
Zone Name	Status Date	Status	Fluid Type	Job			Prod Method		
CODELL	1/9/2006	PR		COMMINGLE ZONES, 1/9/2006 00:00			Flowing		
CODELL	3/30/2022	TA		SET CEMENT PLUG, 3/29/2022 00:00					
NIOBRARA	1/9/2006	PR		COMMINGLE ZONES, 1/9/2006 00:00			Flowing		
NIOBRARA	3/30/2022	TA		SET CEMENT PLUG, 3/29/2022 00:00					
Perforation Data									
Linked Zone		Bnch/Stg	Entered Shot Total	Top (ftKB)		Btm (ftKB)		Date	
NIOBRARA, ORIGINAL HOLE			192	6,450.00		6,544.00		11/17/2005	
NIOBRARA, ORIGINAL HOLE		A	8	6,459.00		6,462.00		6/12/1993	
NIOBRARA, ORIGINAL HOLE		B	10	6,538.00		6,542.00		6/12/1993	
NIOBRARA, ORIGINAL HOLE		C	4	6,596.00		6,597.00		6/12/1993	
CODELL, ORIGINAL HOLE			20	6,713.00		6,723.00		6/8/1993	
Stimulation Intervals									
Zone			Start Date		Top (ftKB)		Btm (ftKB)		
NIOBRARA, ORIGINAL HOLE			11/29/2005		6,450.0		6,544.0		
NIOBRARA, ORIGINAL HOLE			6/14/1993		6,459.0		6,597.0		
CODELL, ORIGINAL HOLE			6/9/1993		6,713.0		6,723.0		
Other In Hole									
Run Date	Des			Make		OD (in)	Top (ftKB)	Btm (ftKB)	
Logs									
Date		Type				Top, MD (ftKB)		Btm, MD (ftKB)	
6/2/1993		COMPENSATED DENSITY				3,910.0		7,096.0	
6/2/1993		INDUCTION				535.0		7,096.0	
6/8/1993		CEMENT BOND				5,700.0		6,852.0	
Plug Back Total Depths									
Date		Type		Com				Depth (ftKB)	
6/1/1993		FLOAT COLLAR		TOP OF FLOAT COLLAR				6,857.0	
6/8/1993		FILL		DEPTH LOGGER ON CBL				6,857.0	