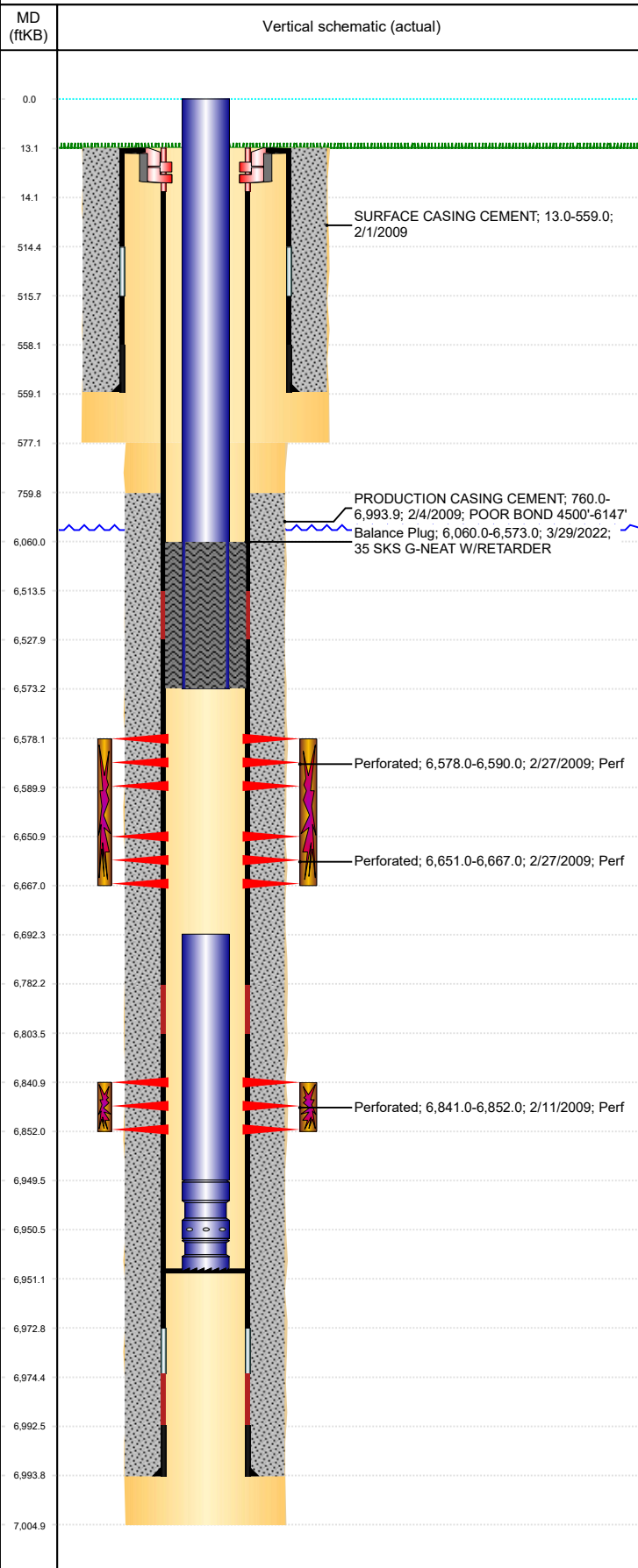


Well Name: PFANNEBECKER C14-32D

DEVIATED, ORIGINAL HOLE, 4/11/2022 10:05:12 AM



Well Header

API 05-123-29653	Business Unit DJ BASIN	District 15	Well Config DEVIATED
KB - GL / MSL (ft... 13.00	Spud Date 2/1/2009	P & A Date	Well Production Status TA
SoRT Yes			

Comment
318A.e. LOCATION!

Surface Location (Congressional)

Qtr 3 SE	Qtr 4 NE	Section 15	Twnshp 4	Twnsh... N	Range 64	Rng E... W	Actual Latitude (°) 40.31473495	Actual Longitude (°) -104.52887933
-------------	-------------	---------------	-------------	---------------	-------------	---------------	------------------------------------	---------------------------------------

Wellbore Sections

Section Des	Size (in)	Act Top, MD (ftKB)	Act Btm, MD (ftKB)
SURFACE	12 1/4	13	577
PRODUCTION	7 7/8	577	7,005

Casing Strings

Csg Des	Run Date	OD (in)	Wt/Len (lb/ft)	Grade	Top, MD (ftKB)	MD (ftKB)
Surface	2/1/2009	8 5/8	24.00	J-55	13.0	559.0
Production	2/4/2009	4 1/2	11.60	M-80	13.0	6,993.9

Cement

Des	Start Date	Top (ftKB)	Btm (ftKB)
SURFACE CASING CEMENT	2/1/2009	13.0	559.0
PRODUCTION CASING CEMENT	2/4/2009	760.0	6,993.9
Balance Plug	3/29/2022	6,060.0	6,573.0

Zone Statuses

Zone Name	Status Date	Status	Fluid Type	Job	Prod Method
NIOBRARA	2/8/2010	PR	Water		Flowing
NIOBRARA	3/29/2022	TA	Water	SET CEMENT PLUG, 3/29/2022 00:00	
CODELL	3/30/2017	PR			
CODELL	3/29/2022	TA	Water	SET CEMENT PLUG, 3/29/2022 00:00	

Perforation Data

Linked Zone	Bnch/Stg	Entered Shot Total	Top (ftKB)	Btm (ftKB)	Date
NIOBRARA, ORIGINAL HOLE	A	24	6,578.00	6,590.00	2/27/2009
NIOBRARA, ORIGINAL HOLE	B	32	6,651.00	6,667.00	2/27/2009
CODELL, ORIGINAL HOLE		44	6,841.00	6,852.00	2/11/2009

Stimulation Intervals

Zone	Start Date	Top (ftKB)	Btm (ftKB)
NIOBRARA, ORIGINAL HOLE	2/27/2009	6,578.0	6,667.0
CODELL, ORIGINAL HOLE	2/27/2009	6,841.0	6,852.0

Other In Hole

Run Date	Des	Make	OD (in)	Top (ftKB)	Btm (ftKB)

Logs

Date	Type	Top, MD (ftKB)	Btm, MD (ftKB)
2/4/2009	Caliper/Comp. Density/Neutron/GR/SP/ML	2,390.0	7,005.0
2/4/2009	DIL/GR/SP/Caliper	560.0	7,005.0

Plug Back Total Depths

Date	Type	Com	Depth (ftKB)
2/4/2009	FLOAT COLLAR		6,972.0
12/16/2009	PLUG REMNANTS	DRILL CIFTP W/ CUTRITE BIT, CHASE DOWN W/ 225 JTS	6,951.0