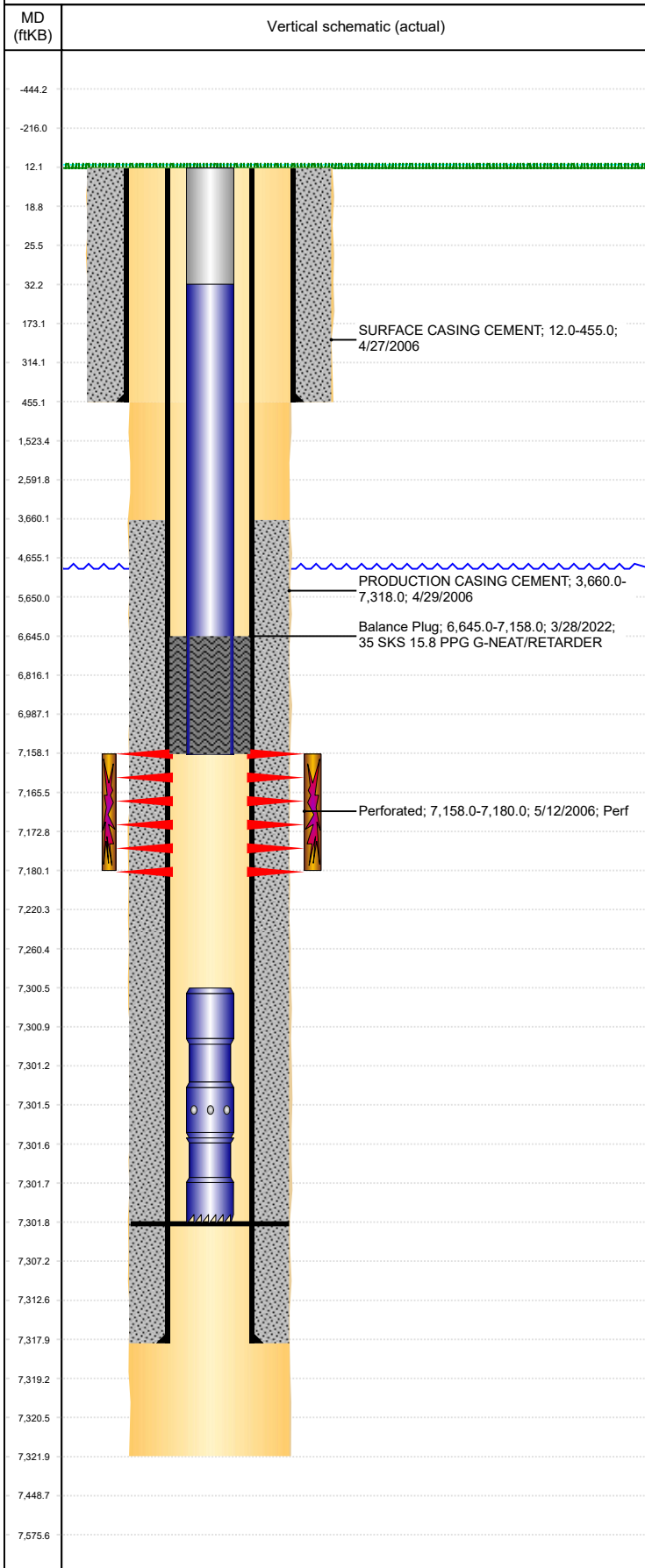


Well Name: GOLDBERG N14-25

VERTICAL, ORIGINAL HOLE, 4/11/2022 9:43:04 AM



Well Header									
API 05-123-23795			Business Unit DJ BASIN			District 15		Well Config VERTICAL	
KB - GL / MSL (ft... 12.00		Spud Date 4/26/2006		P & A Date		Well Production Status TA			SoRT Yes
Comment									
Surface Location (Congressional)									
Qtr 3 NE	Qtr 4 SW	Section 14	Twonshp 5	Twonsh... N	Range 67	Rng E/... W	Actual Latitude (°) 40.39610967	Actual Longitude (°) -104.86501551	
Wellbore Sections									
Section Des			Size (in)			Act Top, MD (ftKB)		Act Btm, MD (ftKB)	
PRODUCTION			12 1/4			12		455	
SURFACE			7 7/8			455		7,322	
Casing Strings									
Csg Des			Run Date		OD (in)	Wt/Len (lb/ft)	Grade	Top, MD (ftKB)	MD (ftKB)
Surface			4/26/2006		8 5/8	24.00	J-55	12.0	455.0
Production			4/30/2006		4 1/2	11.60	M-80	12.0	7,318.0
Cement									
Des					Start Date		Top (ftKB)		Btm (ftKB)
SURFACE CASING CEMENT					4/27/2006		12.0		455.0
PRODUCTION CASING CEMENT					4/29/2006		3,660.0		7,318.0
Balance Plug					3/28/2022		6,645.0		7,158.0
Zone Statuses									
Zone Name		Status Date	Status	Fluid Type	Job			Prod Method	
CODELL		12/15/2009	PR	Water	SET CEMENT PLUG, 3/23/2022 07:00			Flowing	
CODELL		3/28/2022	TA	Water					
Perforation Data									
Linked Zone			Bnch/Stg	Entered Shot Total	Top (ftKB)		Btm (ftKB)		Date
CODELL, ORIGINAL HOLE				88	7,158.00		7,180.00		5/12/2006
Stimulation Intervals									
Zone					Start Date		Top (ftKB)		Btm (ftKB)
CODELL, ORIGINAL HOLE					5/24/2006		7,158.0		7,180.0
Other In Hole									
Run Date		Des			Make	OD (in)	Top (ftKB)	Btm (ftKB)	
Logs									
Date		Type				Top, MD (ftKB)		Btm, MD (ftKB)	
4/30/2006		COMPENSATED DENSITY				2,400.0		7,302.0	
4/30/2006		INDUCTION				754.0		7,322.0	
5/8/2006		GAMMA RAY				3,500.0		7,278.0	
7/18/2017		GYRO				0.0		7,050.0	
Plug Back Total Depths									
Date		Type			Com				Depth (ftKB)
4/29/2006		GUIDE SHOE							7,302.0