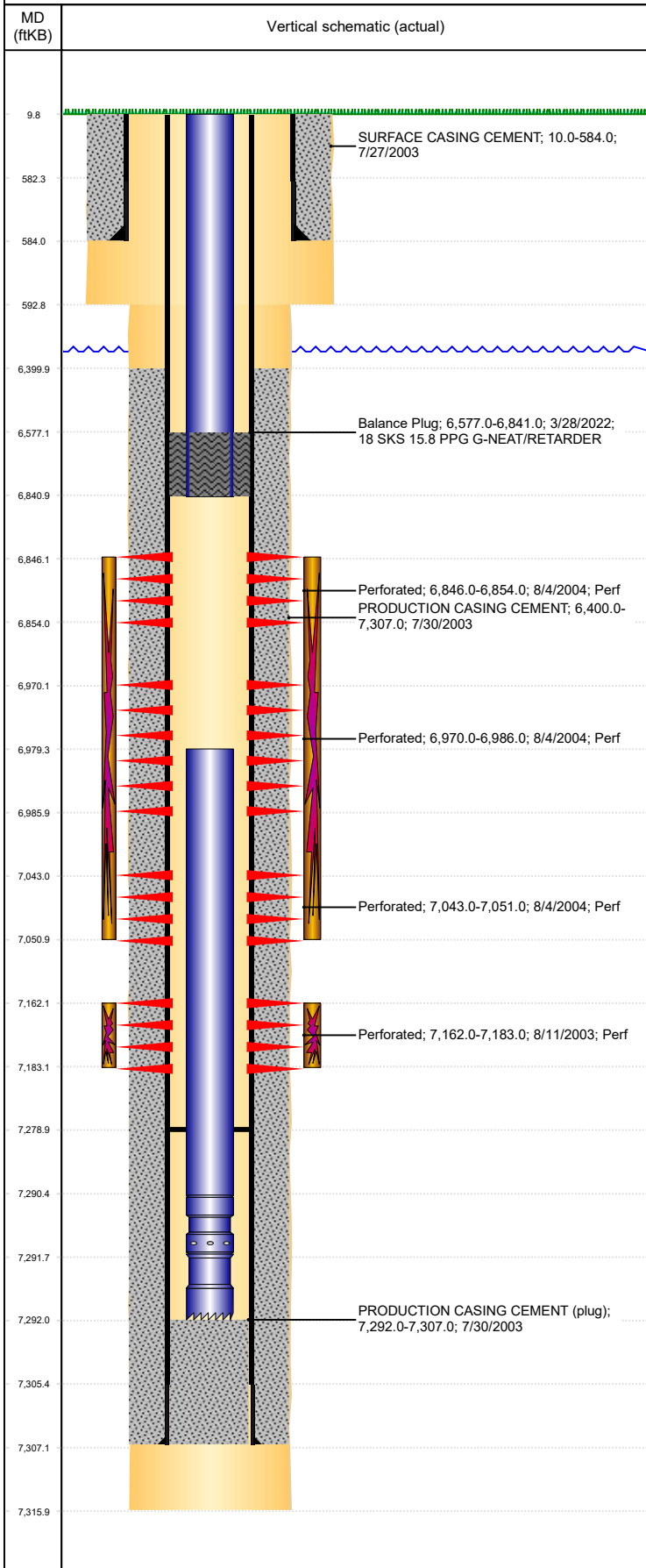


Well Name: GOLDBERG N14-14

VERTICAL, ORIGINAL HOLE, 4/11/2022 9:30:32 AM



Well Header									
API 05-123-21154			Business Unit DJ BASIN			District 15		Well Config VERTICAL	
KB - GL / MSL (ft... 10.00		Spud Date 7/26/2003		P & A Date		Well Production Status TA			SoRT No
Comment									
Surface Location (Congressional)									
Qtr 3 SE	Qtr 4 SW	Section 14	Twnshp 5	Twنش... N	Range 67	Rng E/... W	Actual Latitude (°) 40.39416634		Actual Longitude (°) -104.86405963
Wellbore Sections									
Section Des			Size (in)			Act Top, MD (ftKB)		Act Btm, MD (ftKB)	
SURFACE			12 1/4			10		593	
PRODUCTION			7 7/8			593		7,316	
Casing Strings									
Csg Des			Run Date		OD (in)	Wt/Len (lb/ft)	Grade	Top, MD (ftKB)	MD (ftKB)
Surface			7/27/2003		8 5/8	24.00	J-55	10.0	584.0
Production			7/30/2003		4 1/2	11.60	M-80	10.0	7,307.0
Cement									
Des					Start Date		Top (ftKB)		Btm (ftKB)
SURFACE CASING CEMENT					7/27/2003		10.0		584.0
PRODUCTION CASING CEMENT					7/30/2003		6,400.0		7,307.0
Balance Plug					3/28/2022		6,577.0		6,841.0
Zone Statuses									
Zone Name	Status Date	Status	Fluid Type	Job				Prod Method	
NIOBRARA	11/5/2004	PR		RECOMPLETION, 8/2/2004 00:00					
NIOBRARA	3/28/2022	TA		SET CEMENT PLUG, 3/24/2022 07:00					
CODELL	11/5/2004	PR		RECOMPLETION, 8/2/2004 00:00					
CODELL	3/28/2022	TA		SET CEMENT PLUG, 3/24/2022 07:00					
Perforation Data									
Linked Zone		Bnch/Stg	Entered Shot Total	Top (ftKB)		Btm (ftKB)		Date	
NIOBRARA, ORIGINAL HOLE		A	32	6,846.00		6,854.00		8/4/2004	
NIOBRARA, ORIGINAL HOLE		B	64	6,970.00		6,986.00		8/4/2004	
NIOBRARA, ORIGINAL HOLE		C	32	7,043.00		7,051.00		8/4/2004	
CODELL, ORIGINAL HOLE			84	7,162.00		7,183.00		8/11/2003	
Stimulation Intervals									
Zone				Start Date		Top (ftKB)		Btm (ftKB)	
NIOBRARA, ORIGINAL HOLE				8/9/2004		6,846.0		7,051.0	
CODELL, ORIGINAL HOLE				8/13/2003		7,162.0		7,183.0	
				8/9/2004					
Other In Hole									
Run Date	Des				Make		OD (in)	Top (ftKB)	Btm (ftKB)
Logs									
Date		Type				Top, MD (ftKB)		Btm, MD (ftKB)	
7/30/2003		COMPENSATED DENSITY				4,100.0		7,294.0	
7/30/2003		INDUCTION				584.0		7,314.0	
8/11/2003		CEMENT BOND				6,300.0		7,290.0	
7/18/2017		GYRO				0.0		7,000.0	
Plug Back Total Depths									
Date		Type		Com					Depth (ftKB)
8/2/2004		PLUG		SAND PLUG					7,092.0
11/4/2004		PLUG REMNANTS		C/O SAND & LND TBG					7,279.0