

WELLBORE DIAGRAM PROPOSED WBD

1970 FSL & 2005 FEL

Cut and Cap (Well Name,
API, Legal Desc.) 4-6'
below ground level.

Top off as needed

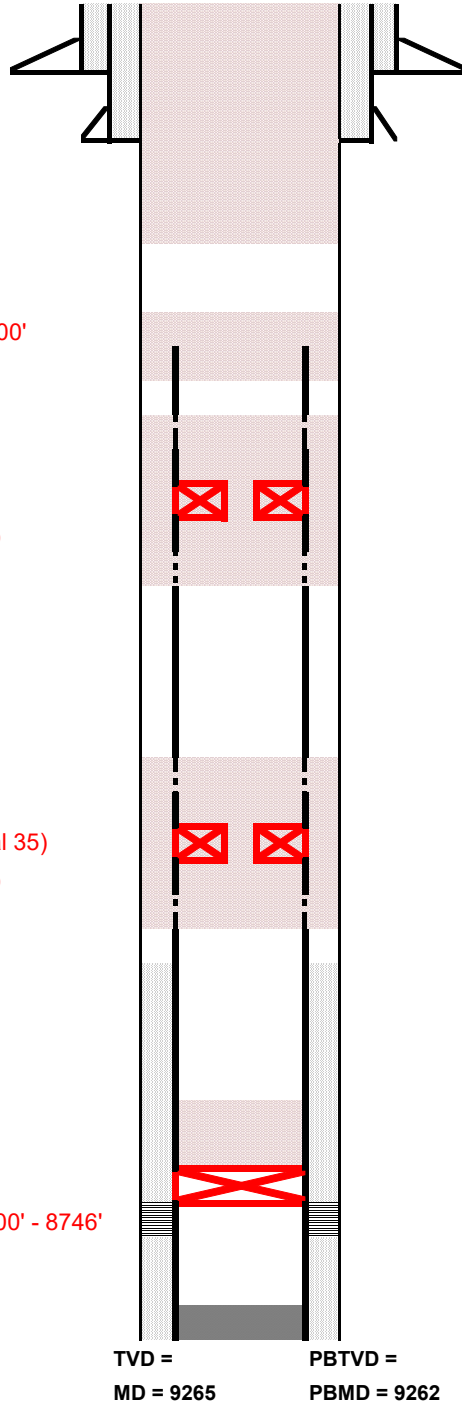
Pump 624 sx Class G+3%CC
from 1200' to surface

Cut & pull casing from 2500'
pump stub plug from 2550' to 2000'
with 285 sx Class G+3%CC

Perf @ 4200'
Set CICR @ 4300'
Pump 82 sx thru CICR (Class G)
leave 20 sx on top (ETOC 4193')
Perf @ 4500'

Perf @ 6900'
Set CICR @ 7000'
Pump 100 sx thru CICR (Thermal 35)
leave 20 sx on top (ETOC 6858')
Perf @ 7200'

Set CIBP @ 9100'
Pump 50 sx Thermal 35 from 9100' - 8746'



Operator: Great Western Operating Company
Well Name: Pierce Lynons Unit Jennings 1
Lease Number:
Location: NWSE Sec 27 T8N R66W
Field: Pierce
County, State: Weld, Colorado
API Number: 05-123-05508
Diagram Date: 4/12/2022
Lat/Long 40.631160 / -104.761090

KB 5052

GL 5037

Spud Date: 11/26/1956

Conductor Casing

18" 16 ga. Conductor culvert csg set @ 28'
w/ 6 yards redimix, calc 135 sx (assume 22" hole)

Surface Casing :

10-3/4" 40.5# J-55 set @ 489'
Cmt w/400 sx (assume 12-1/4")

Production Casing :

7", 23# J-55 & 26# N-80 set @ 9265'
Cmt w/350 sx
(assume 10" hole)
TOC @ free point @ 7300'

Tubing:

2 7/8 set @ 9061
11/23/2019

Formation Tops:

HYGIENE	3891
NIOBRARA	7112
TIMPAS	7372
CARLILE	7394
GREENHORN	7599
GRANEROS	7675
MUDDY	7868
SKULL CREEK	7993
DAKOTA	8102
MORRISON	8151
ENTRADA	8518
LYKINS	8550
LYONS	9187

Perforations

Lyons 9190 - 9248