

BJU G35 FED 13D-35 496
Garfield County, CO
Q220225 & RM-220211
Design #3

Company Name: Caerus Oil & Gas
BJU G35 FED 13D-35 496
Garfield County, CO
Rig: H&P #330
Created By: Will Jircik
Date: 6:41, March 19 2022

WELL DETAILS: BJU G35 FED 13D-35 496

+N/-S	+E/-W	Northing	Easting	Latitude	Longitude
0.0	0.0	14415309.10	2447050.60	39.660509	-108.134131 13D-35

PROJECT DETAILS: Garfield County, CO

System Datum: Universal Transverse Mercator (US Survey Feet)
Datum: NAD 1927 - Western US
Ellipsoid: Clarke 1866
Zone: Zone 12N (114 W to 108 W)
Geodetic System: Mean Sea Level

DESIGN TARGET DETAILS

Name	TVD	+N/-S	+E/-W	Northing	Easting	Latitude	Longitude
13D-35 - OHCR	7793.0	-949.0	-1553.014414310.99	2445528.70		39.657904	-108.139644
13D-35 - PBHL	11563.0	-1019.4	-1623.214414238.40	2445460.80		39.657711	-108.139894

DESIGN ANNOTATIONS

MD	Inc	Azi	TVD	+N/-S	+E/-W	VsectDeparture	Annotation
115.0	0.57	182.15	115.0	-0.9	0.5	0.0	Conductor Tie in
142.8	1.00	238.61	142.8	-1.1	0.3	0.4	EOB @ 1.00° Inc. / 238.61° Azm
200.0	1.00	238.61	200.0	-1.6	-0.6	1.4	Build 3° / 100'
642.6	14.28	238.61	637.6	-32.2	-50.7	60.1	EOB @ 14.28° Inc. / 238.61° Azm
7540.0	14.28	238.61	7322.0	-918.3	-1502.6	1760.9	Drop 3° / 100'
8015.9	0.00	0.00	7793.0	-949.0	-1553.0	1819.9	EOD @ Vertical / Build 1.5° / 100'
8117.9	1.53	224.92	7895.1	-950.0	-1554.0	1821.2	EOB @ 1.53° Inc. / 224.92° Azm
11787.2	1.53	224.92	11563.0	-1019.4	-1623.2	1916.7	TD @ 11787.2' MD / 11563.0' TVD

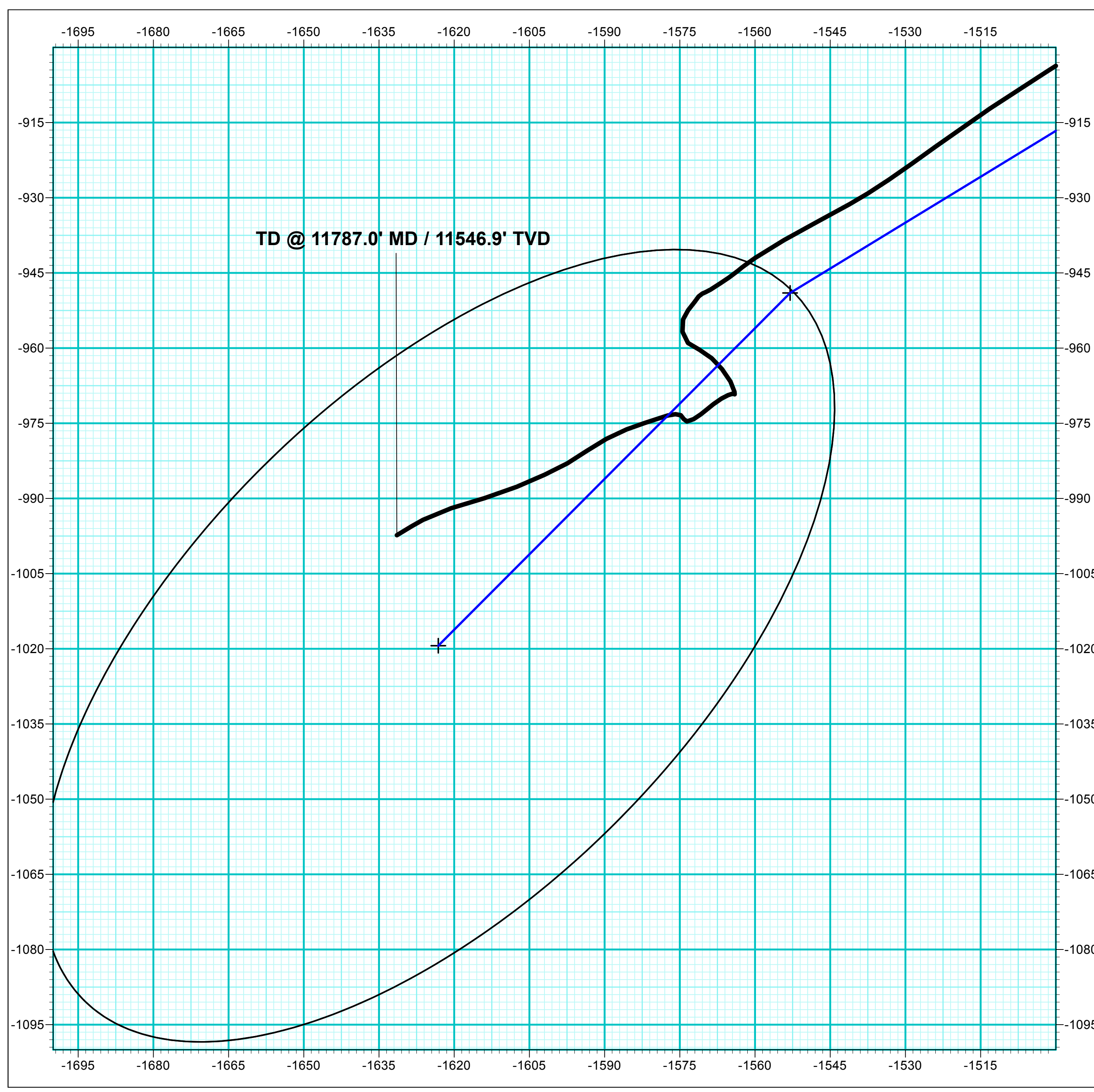
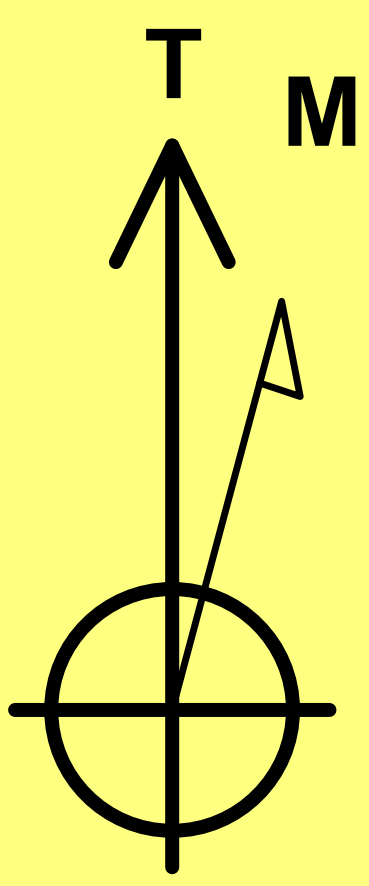
FORMATION TOP DETAILS

TVDPath	MDPath	Formation
2498.0	2562.2	Wasatch
5498.0	5657.8	Wasatch G
5795.0	5964.3	Fort Union
7793.0	8015.9	Ohio Creek
7793.0	8015.9	TOG
8045.0	8267.9	Williams Fork
10767.0	10990.9	Cameo
11363.0	11587.1	Rollins



Azimuths to True North
Magnetic North: 9.25°

Strength: 51105.9nT
Dip Angle: 65.72°
Date: 3/7/2022
Model: HDGM2022

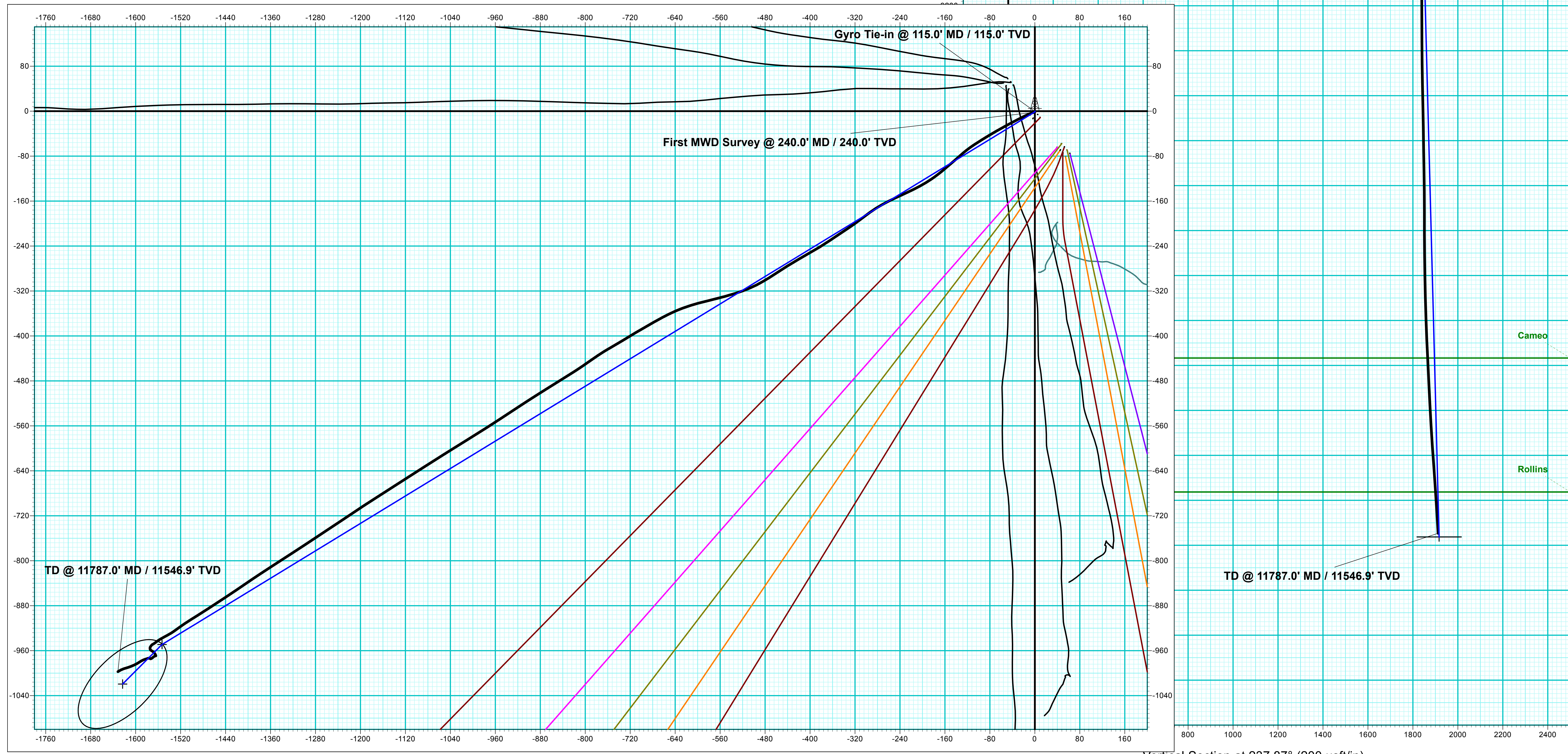
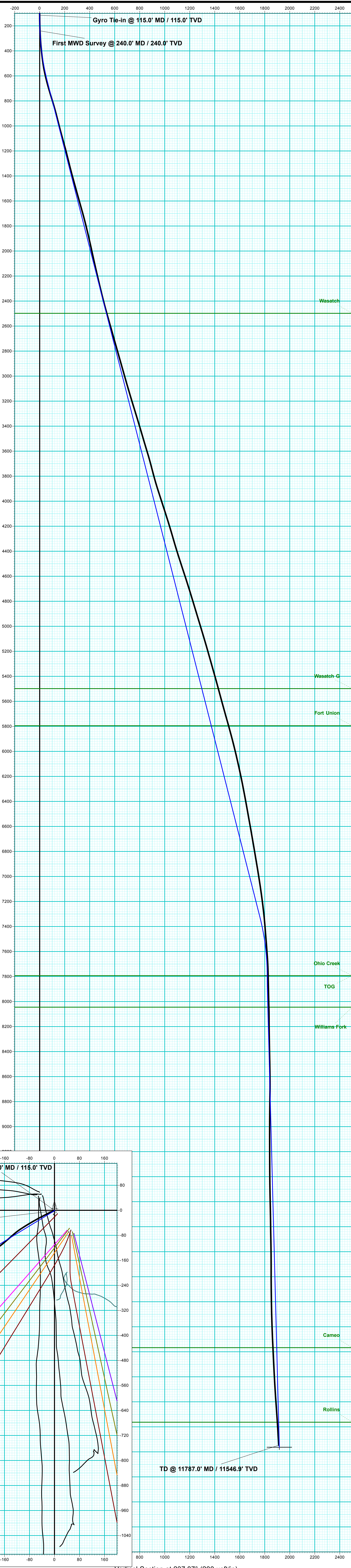


ANNOTATIONS

MD	Inc	Azi	TVD	+N/-S	+E/-W	VsectDeparture	Annotation
115.0	0.57	182.15	115.0	-0.9	0.5	0.0	Gyro Tie-in @ 115.0' MD / 115.0' TVD
240.0	2.20	253.20	240.0	-2.2	-1.8	2.7	4.1 First MWD Survey @ 240.0' MD / 240.0' TVD
11787.0	3.20	238.80	11546.9	-997.3	-1631.4	1912.1	1945.8 TD @ 11787.0' MD / 11546.9' TVD

DESIGN ANNOTATIONS

MD	Inc	Azi	TVD	+N/-S	+E/-W	VsectDeparture	Annotation
115.0	0.57	182.15	115.0	-0.9	0.5	0.0	Conductor Tie in
142.8	1.00	238.61	142.8	-1.1	0.3	0.4	EOB @ 1.00° Inc. / 238.61° Azm
200.0	1.00	238.61	200.0	-1.6	-0.6	1.4	Build 3° / 100'
642.6	14.28	238.61	637.6	-32.2	-50.7	60.1	EOB @ 14.28° Inc. / 238.61° Azm
7540.0	14.28	238.61	7322.0	-918.3	-1502.6	1760.9	Drop 3° / 100'
8015.9	0.00	0.00	7793.0	-949.0	-1553.0	1819.9	EOD @ Vertical / Build 1.5° / 100'
8117.9	1.53	224.92	7895.1	-950.0	-1554.0	1821.2	EOB @ 1.53° Inc. / 224.92° Azm
11787.2	1.53	224.92	11563.0	-1019.4	-1623.2	1916.7	TD @ 11787.2' MD / 11563.0' TVD





Caerus Oil & Gas

Garfield County, CO

NPM G35 496 Pad

BJU G35 FED 13D-35 496 - Slot 13D-35

Wellbore #1

Design: Wellbore #1

KLX Survey Report

19 March, 2022



Company:	Caerus Oil & Gas	Local Co-ordinate Reference:	Well BJU G35 FED 13D-35 496 - Slot 13D-35
Project:	Garfield County, CO	TVD Reference:	RKB @ 8194.0usft (H&P #330)
Site:	NPM G35 496 Pad	MD Reference:	RKB @ 8194.0usft (H&P #330)
Well:	BJU G35 FED 13D-35 496	North Reference:	True
Wellbore:	Wellbore #1	Survey Calculation Method:	Minimum Curvature
Design:	Wellbore #1	Database:	EDM 5000.1 Single User Db

Project	Garfield County, CO		
Map System:	Universal Transverse Mercator (US Survey Feet)	System Datum:	Mean Sea Level
Geo Datum:	NAD 1927 - Western US		
Map Zone:	Zone 12N (114 W to 108 W)		

Site	NPM G35 496 Pad				
Site Position:		Northing:	14,415,365.20 usft	Latitude:	39.660667
From:	Map	Easting:	2,447,000.80 usft	Longitude:	-108.134301
Position Uncertainty:	0.0 usft	Slot Radius:	13-3/16 "	Grid Convergence:	1.83 °

Well	BJU G35 FED 13D-35 496 - Slot 13D-35					
Well Position	+N/-S	0.0 usft	Northing:	14,415,309.10 usft	Latitude:	39.660509
	+E/-W	0.0 usft	Easting:	2,447,050.60 usft	Longitude:	-108.134131
Position Uncertainty		0.0 usft	Wellhead Elevation:	usft	Ground Level:	8,164.0 usft

Wellbore	Wellbore #1				
Magnetics	Model Name	Sample Date	Declination (°)	Dip Angle (°)	Field Strength (nT)
	HDGM2022	3/7/2022	9.25	65.72	51,105.90000000

Design	Wellbore #1				
Audit Notes:					
Version:	1.0	Phase:	ACTUAL	Tie On Depth:	0.0
Vertical Section:	Depth From (TVD) (usft)	+N/-S (usft)	+E/-W (usft)	Direction (°)	
	0.0	0.0	0.0	238.56	

Survey Program	Date	3/19/2022			
From (usft)	To (usft)	Survey (Wellbore)	Tool Name	Description	
30.0	115.0	Sfc Gyro (Wellbore #1)	GYRO-NS	OWSG Gyrocompass Gyro	
240.0	11,787.0	KLX MWD (Wellbore #1)	MWD	OWSG MWD - Standard	

Survey										
Measured Depth (usft)	Inclination (°)	Azimuth (°)	Vertical Depth (usft)	+N/-S (usft)	+E/-W (usft)	Vertical Section (usft)	Dogleg Rate (°/100usft)	Build Rate (°/100usft)	Turn Rate (°/100usft)	
0.0	0.00	0.00	0.0	0.0	0.0	0.0	0.00	0.00	0.00	
30.0	0.00	0.00	30.0	0.0	0.0	0.0	0.00	0.00	0.00	
60.0	0.99	132.52	60.0	-0.2	0.2	-0.1	3.30	3.30	0.00	
90.0	0.82	164.93	90.0	-0.6	0.4	-0.1	1.77	-0.57	108.03	
Gyro Tie-in @ 115.0' MD / 115.0' TVD										
115.0	0.57	182.15	115.0	-0.9	0.5	0.0	1.29	-1.00	68.88	
First MWD Survey @ 240.0' MD / 240.0' TVD										
240.0	2.20	253.20	240.0	-2.2	-1.8	2.7	1.67	1.30	56.84	
330.0	4.60	250.90	329.8	-3.8	-6.9	7.9	2.67	2.67	-2.56	

Company:	Caerus Oil & Gas	Local Co-ordinate Reference:	Well BJU G35 FED 13D-35 496 - Slot 13D-35
Project:	Garfield County, CO	TVD Reference:	RKB @ 8194.0usft (H&P #330)
Site:	NPM G35 496 Pad	MD Reference:	RKB @ 8194.0usft (H&P #330)
Well:	BJU G35 FED 13D-35 496	North Reference:	True
Wellbore:	Wellbore #1	Survey Calculation Method:	Minimum Curvature
Design:	Wellbore #1	Database:	EDM 5000.1 Single User Db

Survey										
Measured Depth (usft)	Inclination (°)	Azimuth (°)	Vertical Depth (usft)	+N/-S (usft)	+E/-W (usft)	Vertical Section (usft)	Dogleg Rate (°/100usft)	Build Rate (°/100usft)	Turn Rate (°/100usft)	
421.0	6.40	244.90	420.4	-7.2	-14.9	16.5	2.07	1.98	-6.59	
512.0	8.80	243.10	510.6	-12.5	-25.7	28.5	2.65	2.64	-1.98	
607.0	13.30	242.20	603.8	-20.9	-41.9	46.6	4.74	4.74	-0.95	
701.0	16.10	240.60	694.7	-32.3	-62.8	70.5	3.01	2.98	-1.70	
796.0	17.20	238.80	785.7	-46.1	-86.3	97.7	1.28	1.16	-1.89	
890.0	15.40	236.30	875.9	-60.2	-108.6	124.1	2.05	-1.91	-2.66	
985.0	14.00	229.40	967.8	-74.7	-127.8	148.0	2.36	-1.47	-7.26	
1,079.0	15.30	228.50	1,058.8	-90.3	-145.7	171.4	1.40	1.38	-0.96	
1,174.0	15.90	230.80	1,150.3	-106.8	-165.2	196.7	0.91	0.63	2.42	
1,268.0	13.80	236.00	1,241.1	-121.2	-184.5	220.6	2.64	-2.23	5.53	
1,363.0	14.40	241.50	1,333.3	-133.2	-204.3	243.8	1.54	0.63	5.79	
1,458.0	15.50	245.10	1,425.1	-144.2	-226.2	268.2	1.51	1.16	3.79	
1,552.0	15.70	245.20	1,515.6	-154.8	-249.1	293.3	0.21	0.21	0.11	
1,647.0	15.70	240.90	1,607.0	-166.5	-272.0	318.9	1.22	0.00	-4.53	
1,742.0	15.60	233.90	1,698.5	-180.2	-293.5	344.5	1.99	-0.11	-7.37	
1,837.0	14.00	232.60	1,790.4	-194.7	-313.0	368.6	1.72	-1.68	-1.37	
1,931.0	13.20	236.70	1,881.7	-207.5	-331.0	390.7	1.33	-0.85	4.36	
2,026.0	12.30	236.20	1,974.4	-219.1	-348.5	411.6	0.95	-0.95	-0.53	
2,120.0	12.60	235.70	2,066.2	-230.5	-365.3	431.9	0.34	0.32	-0.53	
2,215.0	12.80	238.80	2,158.9	-241.8	-382.8	452.7	0.75	0.21	3.26	
2,310.0	13.40	240.60	2,251.4	-252.6	-401.4	474.3	0.76	0.63	1.89	
2,404.0	13.70	239.30	2,342.8	-263.6	-420.5	496.3	0.45	0.32	-1.38	
2,499.0	15.00	238.50	2,434.8	-275.8	-440.6	519.8	1.38	1.37	-0.84	
2,594.0	15.60	236.20	2,526.4	-289.3	-461.7	544.9	0.90	0.63	-2.42	
2,688.0	16.20	239.90	2,616.9	-303.0	-483.6	570.6	1.25	0.64	3.94	
2,783.0	15.60	246.60	2,708.2	-314.7	-506.8	596.5	2.03	-0.63	7.05	
2,878.0	16.40	252.70	2,799.6	-323.7	-531.3	622.2	1.96	0.84	6.42	
2,953.0	16.90	254.30	2,871.4	-329.8	-551.9	642.9	0.90	0.67	2.13	
3,074.0	16.40	257.20	2,987.3	-338.4	-585.5	676.0	0.80	-0.41	2.40	
3,168.0	16.60	252.70	3,077.5	-345.3	-611.3	701.6	1.38	0.21	-4.79	
3,263.0	17.10	247.20	3,168.4	-354.8	-637.1	728.6	1.76	0.53	-5.79	
3,356.0	17.10	241.50	3,257.3	-366.6	-661.7	755.8	1.80	0.00	-6.13	
3,451.0	17.00	240.40	3,348.1	-380.1	-686.1	783.6	0.36	-0.11	-1.16	
3,546.0	16.50	239.40	3,439.1	-393.8	-709.8	811.0	0.61	-0.53	-1.05	
3,643.0	16.40	238.40	3,532.1	-408.0	-733.3	838.4	0.31	-0.10	-1.03	
3,735.0	16.90	240.20	3,620.3	-421.5	-755.9	864.8	0.78	0.54	1.96	
3,830.0	14.60	236.10	3,711.7	-435.0	-777.9	890.6	2.69	-2.42	-4.32	
3,924.0	15.00	234.50	3,802.6	-448.7	-797.6	914.5	0.61	0.43	-1.70	
4,019.0	17.70	237.70	3,893.7	-463.5	-819.8	941.2	3.00	2.84	3.37	
4,114.0	18.10	238.00	3,984.1	-479.1	-844.5	970.4	0.43	0.42	0.32	
4,208.0	17.80	238.10	4,073.5	-494.4	-869.1	999.4	0.32	-0.32	0.11	
4,303.0	17.30	237.40	4,164.1	-509.7	-893.4	1,028.1	0.57	-0.53	-0.74	
4,398.0	16.30	236.30	4,255.1	-524.7	-916.3	1,055.5	1.10	-1.05	-1.16	

Company:	Caerus Oil & Gas	Local Co-ordinate Reference:	Well BJU G35 FED 13D-35 496 - Slot 13D-35
Project:	Garfield County, CO	TVD Reference:	RKB @ 8194.0usft (H&P #330)
Site:	NPM G35 496 Pad	MD Reference:	RKB @ 8194.0usft (H&P #330)
Well:	BJU G35 FED 13D-35 496	North Reference:	True
Wellbore:	Wellbore #1	Survey Calculation Method:	Minimum Curvature
Design:	Wellbore #1	Database:	EDM 5000.1 Single User Db

Survey										
Measured Depth (usft)	Inclination (°)	Azimuth (°)	Vertical Depth (usft)	+N/-S (usft)	+E/-W (usft)	Vertical Section (usft)	Dogleg Rate (°/100usft)	Build Rate (°/100usft)	Turn Rate (°/100usft)	
4,493.0	16.40	236.80	4,346.2	-539.4	-938.7	1,082.2	0.18	0.11	0.53	
4,588.0	17.80	237.30	4,437.0	-554.6	-962.1	1,110.2	1.48	1.47	0.53	
4,682.0	18.20	237.70	4,526.4	-570.2	-986.6	1,139.2	0.45	0.43	0.43	
4,777.0	17.90	238.00	4,616.8	-585.9	-1,011.5	1,168.6	0.33	-0.32	0.32	
4,872.0	17.40	238.30	4,707.3	-601.1	-1,036.0	1,197.4	0.53	-0.53	0.32	
4,966.0	16.80	237.40	4,797.1	-615.8	-1,059.4	1,225.1	0.70	-0.64	-0.96	
5,061.0	16.80	237.70	4,888.1	-630.5	-1,082.6	1,252.5	0.09	0.00	0.32	
5,156.0	16.90	237.30	4,979.0	-645.3	-1,105.8	1,280.1	0.16	0.11	-0.42	
5,250.0	16.80	237.30	5,069.0	-660.1	-1,128.7	1,307.3	0.11	-0.11	0.00	
5,345.0	16.20	237.10	5,160.0	-674.7	-1,151.4	1,334.3	0.63	-0.63	-0.21	
5,440.0	15.50	237.70	5,251.4	-688.7	-1,173.2	1,360.2	0.76	-0.74	0.63	
5,534.0	15.90	236.60	5,341.9	-702.5	-1,194.6	1,385.6	0.53	0.43	-1.17	
5,629.0	15.60	236.20	5,433.4	-716.7	-1,216.1	1,411.4	0.34	-0.32	-0.42	
5,723.0	15.00	236.30	5,524.0	-730.5	-1,236.7	1,436.2	0.64	-0.64	0.11	
5,818.0	15.30	236.50	5,615.7	-744.2	-1,257.4	1,461.0	0.32	0.32	0.21	
5,912.0	15.90	236.30	5,706.3	-758.2	-1,278.5	1,486.3	0.64	0.64	-0.21	
6,007.0	15.50	236.90	5,797.7	-772.4	-1,299.9	1,511.9	0.45	-0.42	0.63	
6,101.0	14.80	237.00	5,888.4	-785.8	-1,320.5	1,536.5	0.75	-0.74	0.11	
6,196.0	13.60	236.80	5,980.5	-798.5	-1,340.0	1,559.8	1.26	-1.26	-0.21	
6,291.0	13.00	237.60	6,073.0	-810.4	-1,358.4	1,581.6	0.66	-0.63	0.84	
6,385.0	12.20	236.30	6,164.7	-821.5	-1,375.6	1,602.1	0.90	-0.85	-1.38	
6,480.0	11.20	235.70	6,257.8	-832.3	-1,391.6	1,621.4	1.06	-1.05	-0.63	
6,575.0	10.60	235.90	6,351.0	-842.4	-1,406.4	1,639.3	0.63	-0.63	0.21	
6,669.0	10.30	236.00	6,443.5	-851.9	-1,420.5	1,656.4	0.32	-0.32	0.11	
6,764.0	10.20	236.50	6,537.0	-861.3	-1,434.6	1,673.3	0.14	-0.11	0.53	
6,858.0	10.00	235.70	6,629.5	-870.5	-1,448.3	1,689.7	0.26	-0.21	-0.85	
6,953.0	9.70	237.80	6,723.1	-879.4	-1,461.9	1,706.0	0.49	-0.32	2.21	
7,047.0	9.70	237.00	6,815.8	-888.0	-1,475.2	1,721.8	0.14	0.00	-0.85	
7,142.0	9.70	237.90	6,909.4	-896.6	-1,488.7	1,737.8	0.16	0.00	0.95	
7,236.0	8.70	237.70	7,002.2	-904.6	-1,501.4	1,752.8	1.06	-1.06	-0.21	
7,331.0	8.30	236.30	7,096.2	-912.2	-1,513.2	1,766.9	0.47	-0.42	-1.47	
7,426.0	7.60	233.60	7,190.2	-919.8	-1,524.0	1,780.0	0.83	-0.74	-2.84	
7,520.0	6.40	235.80	7,283.5	-926.4	-1,533.3	1,791.4	1.31	-1.28	2.34	
7,615.0	4.70	241.30	7,378.1	-931.2	-1,541.1	1,800.6	1.87	-1.79	5.79	
7,709.0	4.50	241.40	7,471.8	-934.9	-1,547.7	1,808.1	0.21	-0.21	0.11	
7,804.0	4.50	240.80	7,566.5	-938.5	-1,554.2	1,815.6	0.05	0.00	-0.63	
7,898.0	3.70	235.30	7,660.3	-942.0	-1,559.9	1,822.3	0.95	-0.85	-5.85	
7,993.0	1.50	228.00	7,755.1	-944.6	-1,563.4	1,826.5	2.34	-2.32	-7.68	
8,087.0	1.20	240.00	7,849.1	-945.9	-1,565.2	1,828.7	0.44	-0.32	12.77	
8,182.0	1.30	232.50	7,944.1	-947.0	-1,566.9	1,830.8	0.20	0.11	-7.89	
8,276.0	1.60	241.00	8,038.1	-948.3	-1,568.9	1,833.2	0.39	0.32	9.04	
8,371.0	0.60	250.50	8,133.1	-949.1	-1,570.5	1,835.0	1.07	-1.05	10.00	
8,466.0	0.60	216.40	8,228.0	-949.7	-1,571.3	1,835.9	0.37	0.00	-35.89	
8,560.0	1.10	215.70	8,322.0	-950.8	-1,572.1	1,837.2	0.53	0.53	-0.74	

Company:	Caerus Oil & Gas	Local Co-ordinate Reference:	Well BJU G35 FED 13D-35 496 - Slot 13D-35
Project:	Garfield County, CO	TVD Reference:	RKB @ 8194.0usft (H&P #330)
Site:	NPM G35 496 Pad	MD Reference:	RKB @ 8194.0usft (H&P #330)
Well:	BJU G35 FED 13D-35 496	North Reference:	True
Wellbore:	Wellbore #1	Survey Calculation Method:	Minimum Curvature
Design:	Wellbore #1	Database:	EDM 5000.1 Single User Db

Survey										
Measured Depth (usft)	Inclination (°)	Azimuth (°)	Vertical Depth (usft)	+N/-S (usft)	+E/-W (usft)	Vertical Section (usft)	Dogleg Rate (°/100usft)	Build Rate (°/100usft)	Turn Rate (°/100usft)	
8,655.0	1.40	219.70	8,417.0	-952.5	-1,573.3	1,839.2	0.33	0.32	4.21	
8,749.0	1.20	196.20	8,511.0	-954.3	-1,574.4	1,841.0	0.60	-0.21	-25.00	
8,844.0	1.80	174.10	8,606.0	-956.7	-1,574.5	1,842.4	0.87	0.63	-23.26	
8,938.0	1.50	129.20	8,699.9	-959.0	-1,573.4	1,842.6	1.37	-0.32	-47.77	
9,033.0	1.80	113.60	8,794.9	-960.4	-1,571.0	1,841.3	0.57	0.32	-16.42	
9,128.0	1.80	135.80	8,889.8	-962.0	-1,568.6	1,840.1	0.73	0.00	23.37	
9,222.0	1.80	137.20	8,983.8	-964.2	-1,566.6	1,839.5	0.05	0.00	1.49	
9,317.0	1.90	153.90	9,078.7	-966.7	-1,564.9	1,839.4	0.58	0.11	17.58	
9,411.0	0.80	171.20	9,172.7	-968.7	-1,564.1	1,839.8	1.23	-1.17	18.40	
9,506.0	0.20	342.50	9,267.7	-969.2	-1,564.1	1,840.0	1.05	-0.63	180.32	
9,600.0	0.40	266.50	9,361.7	-969.1	-1,564.4	1,840.2	0.43	0.21	-80.85	
9,695.0	0.80	244.70	9,456.7	-969.4	-1,565.4	1,841.2	0.48	0.42	-22.95	
9,789.0	1.00	241.40	9,550.7	-970.1	-1,566.7	1,842.7	0.22	0.21	-3.51	
9,884.0	1.40	230.60	9,645.7	-971.2	-1,568.3	1,844.6	0.48	0.42	-11.37	
9,978.0	0.80	230.90	9,739.7	-972.3	-1,569.7	1,846.4	0.64	-0.64	0.32	
10,074.0	0.90	232.50	9,835.6	-973.2	-1,570.8	1,847.8	0.11	0.10	1.67	
10,168.0	1.20	239.50	9,929.6	-974.2	-1,572.3	1,849.6	0.35	0.32	7.45	
10,262.0	0.60	273.40	10,023.6	-974.6	-1,573.6	1,850.9	0.83	-0.64	36.06	
10,356.0	0.60	341.80	10,117.6	-974.1	-1,574.2	1,851.2	0.72	0.00	72.77	
10,451.0	0.60	303.20	10,212.6	-973.4	-1,574.8	1,851.3	0.42	0.00	-40.63	
10,546.0	0.80	264.60	10,307.6	-973.2	-1,575.9	1,852.1	0.53	0.21	-40.63	
10,640.0	1.10	256.70	10,401.6	-973.5	-1,577.4	1,853.6	0.35	0.32	-8.40	
10,735.0	1.40	248.70	10,496.6	-974.1	-1,579.4	1,855.6	0.36	0.32	-8.42	
10,829.0	2.00	253.90	10,590.5	-975.0	-1,582.0	1,858.3	0.66	0.64	5.53	
10,924.0	2.60	248.00	10,685.4	-976.2	-1,585.6	1,862.0	0.68	0.63	-6.21	
11,019.0	2.80	241.90	10,780.3	-978.1	-1,589.7	1,866.5	0.37	0.21	-6.42	
11,113.0	2.80	235.30	10,874.2	-980.5	-1,593.6	1,871.1	0.34	0.00	-7.02	
11,207.0	2.80	239.40	10,968.1	-983.0	-1,597.4	1,875.6	0.21	0.00	4.36	
11,302.0	3.30	246.50	11,063.0	-985.3	-1,601.9	1,880.7	0.66	0.53	7.47	
11,396.0	4.10	246.60	11,156.8	-987.7	-1,607.5	1,886.7	0.85	0.85	0.11	
11,491.0	4.20	254.60	11,251.5	-989.9	-1,614.0	1,893.4	0.62	0.11	8.42	
11,586.0	4.10	251.70	11,346.3	-991.9	-1,620.6	1,900.0	0.24	-0.11	-3.05	
11,680.0	3.40	242.50	11,440.1	-994.3	-1,626.2	1,906.1	0.98	-0.74	-9.79	
11,725.0	3.20	238.80	11,485.0	-995.5	-1,628.5	1,908.7	0.65	-0.44	-8.22	
TD @ 11787.0' MD / 11546.9' TVD										
11,787.0	3.20	238.80	11,546.9	-997.3	-1,631.4	1,912.1	0.00	0.00	0.00	

Company:	Caerus Oil & Gas	Local Co-ordinate Reference:	Well BJU G35 FED 13D-35 496 - Slot 13D-35
Project:	Garfield County, CO	TVD Reference:	RKB @ 8194.0usft (H&P #330)
Site:	NPM G35 496 Pad	MD Reference:	RKB @ 8194.0usft (H&P #330)
Well:	BJU G35 FED 13D-35 496	North Reference:	True
Wellbore:	Wellbore #1	Survey Calculation Method:	Minimum Curvature
Design:	Wellbore #1	Database:	EDM 5000.1 Single User Db

Design Annotations				
Measured Depth (usft)	Vertical Depth (usft)	Local Coordinates		Comment
		+N/-S (usft)	+E/-W (usft)	
115.0	115.0	-0.9	0.5	Gyro Tie-in @ 115.0' MD / 115.0' TVD
240.0	240.0	-2.2	-1.8	First MWD Survey @ 240.0' MD / 240.0' TVD
11,787.0	11,546.9	-997.3	-1,631.4	TD @ 11787.0' MD / 11546.9' TVD

Checked By: _____ Approved By: _____ Date: _____