



Caerus Operating LLC

SURFACE CEMENT POST JOB REPORT

BJU G35 FED #13D-35-496 05-045-24342
S:35 T:4S R:96W Garfield CO

CallSheet #: 80533
Proposal #: 58153



SURFACE CEMENT Post Job Report

Attention: Mr. Cole Walton | (720) 880-6325 | cwalton@caerusoilandgas.com

Caerus Operating LLC

1001 17TH STREET | DENVER, CO 80202

Dear Mr. Cole Walton,

Thank you for the opportunity to provide cementing services on this well. American Cementing strives to achieve complete customer satisfaction. If you have any questions regarding the services or data provided, please contact American Cementing at any time.

Sincerely,

Zen Keith

SME | (720) 934-5850 | zen.keith@americacementing.com

Field Office 28730 US-6, Rifle, CO 81650
Phone: (970) 657-1157

Job Details & Summary

Geometry

Type	Function	OD (in)	ID (in)	Weight (lb/ft)	Thread	Top (ft)	Bottom (ft)	Excess (%)
Casing	Outer	20	19.5	53	n/a	0	100	0
Open Hole	Outer	n/a	14.75	n/a	n/a	100	2500	25
Open Hole	Outer	n/a	14.75	n/a	n/a	2500	3018	0
Casing	Inner	9.625	8.921	36	n/a	0	3008.5	0

Timing

Event	Date/Time
Call Out	3/14/2022 02:00
Depart Facility	3/14/2022 03:20
On Location	3/14/2022 04:50
Rig Up Iron	3/14/2022 05:10
Job Started	3/14/2022 11:43
Job Completed	3/14/2022 14:55
Rig Down Iron	3/14/2022 15:00
Depart Location	3/14/2022 16:45

Equipment / People

Unit Type	Unit	Power Unit	Employee #1
Field Storage Silo	FSS(CTS)-469		
Field Storage Silo	FSS(CTS)-468		
AS Cement Trailer Float	CTF-9309	TRB-421	Hansen, James
AS Cement Trailer Float	CTF-558	TRC(TRB)-201	Decker, Tonya
Cement Trailer Float	CTF-286	TRC(TRB)-090	Manuelito, Hamilton
Cement Pump Float	CPF-136	TRH-1137	Hale, Jason
Light Duty Vehicles	LDV-063		Castillo, Francisco

General Job Information

Metrics	Value
Well Fluid Density	9.3 lb/gal
Well Fluid Type	WBM
Rig Circulation Vol	300 bbls
Rig Circulation Time	0.5 hours
Calculated Displacement	227 bbls
Actual Displacement	227 bbls
Total Spacer to Surface	40 bbls
Total CMT to Surface	77 bbls
Well Topped Out	No

Job Details

Metrics	Value
Flare Prior to Job	No
Flare Prior to Job	0 units
Flare During Job	No
Flare During Job	0 units
Flare at End of Job	No
Flare at End of Job	0 units
Well Full Prior to Job	Yes
Well Fluid Density Into Well	9.3 lb/gal
Well Fluid Density Out of Well	9.3 lb/gal

Job Details (cont.)

Metrics	Value
BHCT	90 °F
BHST	129 °F

Water Analysis

Metrics	Value	Recommended
Water Source	Upright Rig Tank	
Temperature	55 °F	50-80 °F
pH Level	6	5.5-8.5
Chlorides	0 mg/L	0-3000 mg/L
Total Alkalinity	240	0-1000
Total Hardness	250 mg/L	0-500 mg/L
Carbonates	0 mg/L	0-100 mg/L
Sulfates	200 mg/L	0-1500 mg/L
Potassium	250 mg/L	0-3000 mg/L
Iron	0 mg/L	0-300 mg/L

Circulation

Lost Circulation Experienced

No

Job Execution Information

Fluid	Product	Function	Density (lb/gal)	Yield (ft ³ /sk)	Water Rq. (gal/sk)	Water Rq. (gal/bbl)	Volume (sk)	Volume (bbl)	Designed Top (ft)
1	Water	Flush	8.34			42.00		40.00	786
2	Lead	Lead	12.00	2.52	14.80		869.00	390.00	1050
3	Tail	Tail	12.50	2.23	12.56		161.00	63.94	2500
4	Water	DisplacementFinal	8.34			42.00		227.00	0

Job Fluid Details

Fluid	Type	Fluid	Product	Function	Conc.	Uom
2	Lead	Lead	ASTM TYPE I/II	Cement	100.00	%
2	Lead	Lead	A-10	Accelerator	5.00	%BWOB
2	Lead	Lead	A-2	Accelerator	3.00	lb/sk
2	Lead	Lead	FP-24	Defoamer	0.30	%BWOB
2	Lead	Lead	IntegraSeal PHENO	LostCirculation	0.50	lb/sk
2	Lead	Lead	IntegraSeal POLI	LostCirculation	0.25	lb/sk
2	Lead	Lead	R-7C	Retarder	0.30	%BWOB
2	Lead	Lead	STATIC FREE	Other	0.01	lb/sk
3	Tail	Tail	ASTM TYPE I/II	Cement	100.00	%
3	Tail	Tail	A-10	Accelerator	5.00	%BWOB
3	Tail	Tail	A-2	Accelerator	2.00	lb/sk
3	Tail	Tail	A-7P	Accelerator	2.00	lb/sk
3	Tail	Tail	FP-24	Defoamer	0.30	%BWOB
3	Tail	Tail	IntegraSeal PHENO	LostCirculation	0.50	lb/sk
3	Tail	Tail	IntegraSeal POLI	LostCirculation	0.25	lb/sk
3	Tail	Tail	STATIC FREE	Other	0.01	lb/sk

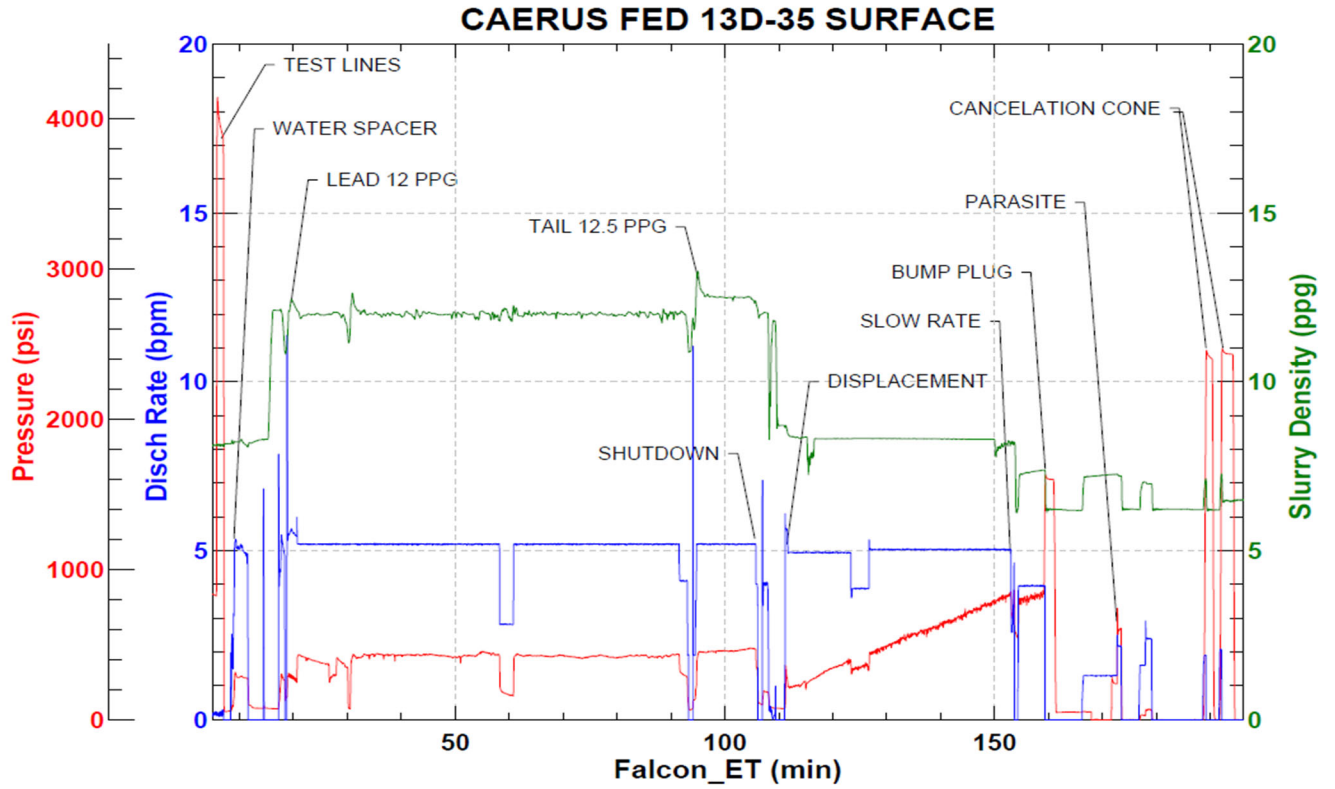
Job Logs

Line	Event	Date (MM/DD/YY)	Time (HH:MM)	Density (lb/gal)	Pump Rate (bpm)	Pump Volume (bbls)	Pipe Pressure (psi)	Comment
1	CALLOUT	3/14/2022	02:00					ON LOCATION AT 06:00 HRS
2	LEAVE YARD	3/14/2022	03:20					CREW LEAVE THE YARD
3	ON LOCATION	3/14/2022	04:50					CREW ON LOCATION
4	RIG UP	3/14/2022	05:10					RIG UP MEETING, RIG UP
5	SAFETY MEETING	3/14/2022	11:00					PRE-JOB SAFETY MEETING
6	PRESSURE TEST	3/14/2022	11:43				4000	PRESSURE TEST LINES
7	PUMP SPACER	3/14/2022	11:51	8.34	5	40	283	WATER SPACER
8	LEAD CEMENT	3/14/2022	11:59	12	5	50	287	LEAD 869 SKS/390 BBLS AT 12 PPG, 2.52 YLD, 14.8 GPS
9	LEAD CEMENT	3/14/2022	12:08	12	5	50	431	100 BBLS LEAD CEMENT PUMPED
10	LEAD CEMENT	3/14/2022	12:17	12	5	50	429	150 BBLS LEAD CEMENT PUMPED
11	LEAD CEMENT	3/14/2022	12:27	12	5	50	445	200 BBLS LEAD CEMENT PUMPED
12	LEAD CEMENT	3/14/2022	12:37	12	5	50	421	250 BBLS LEAD CEMENT PUMPED
13	LEAD CEMENT	3/14/2022	12:48	12	5	50	425	300 BBLS LEAD CEMENT PUMPED
14	LEAD CEMENT	3/14/2022	12:57	12	5	90	417	390 BBLS LEAD CEMENT PUMPED
15	TAIL CEMENT	3/14/2022	13:15	12.5	5	64	473	TAIL 161 SKS/64 BBLS AT 12.5 PPG, 2.23 YLD, 12.56 GPS, TOP OF TAIL 2,480'
16	SHUTDOWN	3/14/2022	13:29					SHUTDOWN, DROP PLUG
17	DISPLACEMENT	3/14/2022	13:32	8.34	5	50	351	DISPLACEMENT WATER
18	DISPLACEMENT	3/14/2022	13:43	8.34	5	50	543	100 BBLS DISPLACEMENT PUMPED
19	DISPLACEMENT	3/14/2022	13:54	8.34	5	50	681	150 BBLS DISPLACEMENT PUMPED
20	DISPLACEMENT	3/14/2022	14:05	8.34	5	57	803	207 BBLS DISPLACEMENT PUMPED
21	DISPLACEMENT	3/14/2022	14:15	8.34	4	20	859	SLOW RATE
22	LAND PLUG	3/14/2022	14:21				1617	LAND PLUG, 77 BBLS CMT TO SURFACE
23	CHECK FLOATS	3/14/2022	14:24					FLOATS HELD, 1.25 BBLS FLOW BACK
24	PARASITE	3/14/2022	14:29	8.37	1.5	10	300	SUGAR WATER THROUGH PARASITE, BROKE AT 300 PSI
25	OTHER	3/14/2022	14:50	8.34	2	1	2471	PRESSURE UP ON CANCELATION CONE
26	RIG DOWN	3/14/2022	15:00					RIG DOWN MEETING, RIG DOWN
27	LEAVE LOCATION	3/14/2022	16:45					CREW LEAVE LOCATION

Pump Diagrams



JobMaster Program Version 5.01C1
Job Number: 80533
Customer: CAERUS
Well Name: FED 13D-35



Job Start: Monday, March 14, 2022