



Caerus Operating LLC

LONG STRING POST JOB REPORT

BJU G35 FED 12D-35-496 05-045-24331
S:35 T:4S R:96W Garfield CO

CallSheet #: 80449
Proposal #: 58294



LONG STRING Post Job Report

Attention: Mr. Cole Walton | (720) 880-6325 | cwalton@caerusoilandgas.com

Caerus Operating LLC

1001 17TH STREET | DENVER, CO 80202

Dear Mr. Cole Walton,

Thank you for the opportunity to provide cementing services on this well. American Cementing strives to achieve complete customer satisfaction. If you have any questions regarding the services or data provided, please contact American Cementing at any time.

Sincerely,

Michael Harold

Field Engineer II | (970) 773-3636 | michael.harold@americacementing.com

Field Office 28730 US-6, Rifle, CO 81650
Phone: (970) 657-1157

Job Details & Summary

Geometry

Type	Function	OD (in)	ID (in)	Weight (lb/ft)	Thread	Top (ft)	Bottom (ft)	Excess (%)
Casing	Outer	9.625	8.921	36	n/a	0	3000	0
Open Hole	Outer	n/a	8.75	n/a	n/a	3000	6819	25
Open Hole	Outer	n/a	8.75	n/a	n/a	6819	11991	0
Casing	Inner	4.5	4	11.6	n/a	0	11976.4	0

Equipment / People

Unit Type	Unit	Power Unit	Employee #1
Field Storage Silo	FSS(CTS)-469		
Field Storage Silo	FSS(CTS)-468		
AS Cement Trailer	CTF-9898	TRC(TRB)-195	
AS Cement Trailer	CTF-019	TRC(TRB)-194	
Cement Trailer	CTF-249	TRC(TRB)-090	Carrasco, Joel
Cement Pump	CPF-136	TRH-1137	Woronovitch, Collin
Light Duty Vehicles	LDV-061		Aden, Mark

Timing

Event	Date/Time
Call Out	3/10/2022 18:00
Depart Facility	3/10/2022 20:52
On Location	3/11/2022 02:00
Rig Up Iron	3/11/2022 02:40
Job Started	3/11/2022 13:18
Job Completed	3/11/2022 16:12
Rig Down Iron	3/11/2022 16:40
Depart Location	3/11/2022 18:00

General Job Information

Metrics	Value
Well Fluid Density	10.7 lb/gal
Well Fluid Type	WBM
Rig Circulation Vol	1800 bbls
Rig Circulation Time	2.5 hours
Calculated Displacement	184 bbls
Actual Displacement	185 bbls
Total Spacer to Surface	0 bbls
Total CMT to Surface	0 bbls
Well Topped Out	N/A

Job Details

Metrics	Value
Flare Prior to Job	No
Flare Prior to Job	0 units
Flare During Job	No
Flare During Job	0 units
Flare at End of Job	No
Flare at End of Job	0 units
Well Full Prior to Job	Yes
Well Fluid Density Into Well	10.7 lb/gal
Well Fluid Density Out of Well	10.7 lb/gal

Job Details (cont.)

Metrics	Value
BHCT	207 °F
BHST	271 °F

Water Analysis

Metrics	Value	Recommended
Water Source	Upright Rig Tank	
Temperature	55.2 °F	50-80 °F
pH Level	7	5.5-8.5
Chlorides	0 mg/L	0-3000 mg/L
Total Alkalinity	180	0-1000
Total Hardness	425 mg/L	0-500 mg/L
Carbonates	0 mg/L	0-100 mg/L
Sulfates	<200 mg/L	0-1500 mg/L
Potassium	0 mg/L	0-3000 mg/L
Iron	0 mg/L	0-300 mg/L

Circulation

Lost Circulation Experienced	Losses into Spacer	Losses into Cement	Losses into Displacement
Yes	0	407	0

Circulation Details

Gained returns at 78 bbls into scavenger, Lost returns at 154 bbls into tail - 600 bbls recovered

Job Execution Information

Fluid	Product	Function	Density (lb/gal)	Yield (ft ³ /sk)	Water Rq. (gal/sk)	Water Rq. (gal/bbl)	Volume (sks)	Volume (bbl)	Designed Top (ft)
1	Mud Flush	Flush	8.45			40.86		20.00	658
2	Scav Cement	Scavenger	11.50	2.76	16.68		235.00	115.48	1005
3	Lead Cement	Lead	12.70	2.00	11.00		733.00	261.37	3000
4	Tail Cement	Tail	13.50	2.00	9.66		802.00	285.20	6819
5	Water + KCL Sub	DisplacementFinal	8.34			42.00		187.00	0

Job Fluid Details

Fluid	Type	Fluid	Product	Function	Conc.	Uom
1	Flush	Mud Flush	SAPP	Surfactant	10.00	lb/bbl
1	Flush	Mud Flush	SS-201	Surfactant	0.50	gal/bbl
2	Scavenger	Scav Cement	ASTM TYPE I/II	Cement	100.00	%
2	Scavenger	Scav Cement	BA-60	GasMigration	0.30	%BWOB
2	Scavenger	Scav Cement	FP-24	Defoamer	0.30	%BWOB
2	Scavenger	Scav Cement	GW-86	Viscosifier	0.20	%BWOB
2	Scavenger	Scav Cement	IntegraSeal PHENO	LostCirculation	3.00	lb/sk
2	Scavenger	Scav Cement	R-3	Retarder	0.50	%BWOB
2	Scavenger	Scav Cement	STATIC FREE	Other	0.01	lb/sk
3	Lead	Lead Cement	ASTM TYPE I/II	Cement	100.00	%
3	Lead	Lead Cement	BA-60	GasMigration	0.30	%BWOB
3	Lead	Lead Cement	FL-66	FluidLoss	0.50	%BWOB
3	Lead	Lead Cement	FP-24	Defoamer	0.30	%BWOB
3	Lead	Lead Cement	GW-86	Viscosifier	0.10	%BWOB
3	Lead	Lead Cement	IntegraSeal PHENO	LostCirculation	3.00	lb/sk
3	Lead	Lead Cement	R-3	Retarder	0.30	%BWOB
3	Lead	Lead Cement	STATIC FREE	Other	0.01	lb/sk
4	Tail	Tail Cement	CLASS G	Cement	70.00	%
4	Tail	Tail Cement	FLY ASH (POZZOLAN)	Extender	30.00	%
4	Tail	Tail Cement	BA-60	GasMigration	0.20	%BWOB
4	Tail	Tail Cement	BENTONITE	Viscosifier	8.00	%BWOB
4	Tail	Tail Cement	FL-24	FluidLoss	0.40	%BWOB
4	Tail	Tail Cement	FP-24	Defoamer	0.30	%BWOB
4	Tail	Tail Cement	IntegraSeal PHENO	LostCirculation	3.00	lb/sk
4	Tail	Tail Cement	R-3	Retarder	0.25	%BWOB
4	Tail	Tail Cement	S-8	StrengthRetrogression	25.00	%BWOB

Job Logs

Line	Event	Date (MM/DD/YY)	Time (HH:MM)	Density (lb/gal)	Pump Rate (bpm)	Pump Volume (bbls)	Pipe Pressure (psi)	Comment
1	Callout	3/10/2022	18:00					Yard call 1800 20220310, on location 0400 20220311.
2	Depart For Location	3/10/2022	20:52					Leave Rifle yard for location
3	Arrive On Location	3/11/2022	02:00					Arrive on location, rig running casing
4	Spot Equipment	3/11/2022	02:10					Spot in all Equipment
5	Rig Up Iron	3/11/2022	02:40					Pre rig up safety meeting, rig in all equipment and lines to stand pipes
6	Waiting	3/11/2022	03:57					Waiting on rig to finish casing
7	Rig Up Iron	3/11/2022	10:20					Rig up Cement head and lines on the floor; Rig began circulating at 10:45
8	Safety Meeting	3/11/2022	12:15					Pre job safety meeting with company man and rig crew
9	End Circulation	3/11/2022	13:00					Rig ended circulation, Circulated @ 12 BPM for 2.5 Hours total of 1800 BBLS
10	Pump Spacer	3/11/2022	13:12		4	5	380	Pumping fresh water spacer to load lines, no returns
11	Pressure Test Lines	3/11/2022	13:18				5000	Pressure test
12	Pump Spacer	3/11/2022	13:22		4	20	263	Pumping mud flush spacer
13	Pump Scavenger	3/11/2022	13:27	11.5	6	0	588	Pumping scavenger, water temp 55.2 F slurry 49.1 F. Pumping 1200 CFM down parasite line
14	Pump Scavenger	3/11/2022	13:35	11.5	6	50	528	Pumping scavenger; Returns at 78 bbls
15	Pump Scavenger	3/11/2022	13:43	11.5	6	100	505	Pumping scavenger
16	Pump Scavenger	3/11/2022	13:47	11.5	6	115	512	Pumping scavenger
17	Pump Lead Cement	3/11/2022	13:47	12.7	6	0	527	Pumping lead cement. Slurry temp 43.1 F
18	Pump Lead Cement	3/11/2022	13:55	12.7	6	50	673	Pumping lead cement
19	Pump Lead Cement	3/11/2022	14:03	12.7	6	100	664	Pumping lead cement
20	Pump Lead Cement	3/11/2022	14:12	12.7	6	150	670	Pumping lead cement
21	Pump Lead Cement	3/11/2022	14:20	12.7	6	200	661	Pumping lead cement
22	Pump Lead Cement	3/11/2022	14:30	12.7	6	250	672	Pumping lead cement
23	Pump Lead Cement	3/11/2022	14:33	12.7	6	253	752	Pumping lead cement
24	Pump Tail Cement	3/11/2022	14:33	13.5	6	0	977	Pumping tail cement, slurry temp 49.2 F
25	Pump Tail Cement	3/11/2022	14:41	13.5	6	50	982	Pumping tail cement
26	Pump Tail Cement	3/11/2022	14:49	13.5	6	100	960	Pumping tail cement, rig bypassed parasite air@ 100 BBLS; partial returns
27	Pump Tail Cement	3/11/2022	14:58	13.5	6	150	928	Pumping tail cement; Lost returns at 154 bbls
28	Pump Tail Cement	3/11/2022	15:06	13.5	6	200	964	Pumping tail cement

Line	Event	Date (MM/DD/YY)	Time (HH:MM)	Density (lb/gal)	Pump Rate (bpm)	Pump Volume (bbls)	Pipe Pressure (psi)	Comment
29	Pump Tail Cement	3/11/2022	15:14	13.5	6	250	941	Pumping tail cement
30	Pump Tail Cement	3/11/2022	15:26	13.5	6	263	1022	Pumping tail cement
31	Clean Pumps and Lines	3/11/2022	15:26					Clean pump and lines to 3-sided tank
32	Drop Top Plug	3/11/2022	15:34					Drop top plug verified by company man
33	Pump Displacement	3/11/2022	15:35		6	0	352	Pumping displacement
34	Pump Displacement	3/11/2022	15:45		5	50	442	Pumping displacement
35	Pump Displacement	3/11/2022	15:54		5	100	912	Pumping displacement
36	Pump Displacement	3/11/2022	16:05		6	150	2029	Pumping displacement
37	Pump Displacement	3/11/2022	16:12		4	184	2078	Pumping displacement; Pumped 185 bbls and shut down. Plug didn't land
38	Shut down	3/11/2022	16:12					Shut down at 185 bbls. FCP 2078 PSI
39	Check Floats	3/11/2022	16:16					Bleed pressure, floats held. 1.25 BBLS bled back. Rig returned 600 BBLs during cement job
40	Rig Down Iron	3/11/2022	16:40					Pre rig down safety meeting, rig down cement head and lines on the floor.
41	Depart Location	3/11/2022	18:00					Leave location for Rifle shop

Pump Diagrams

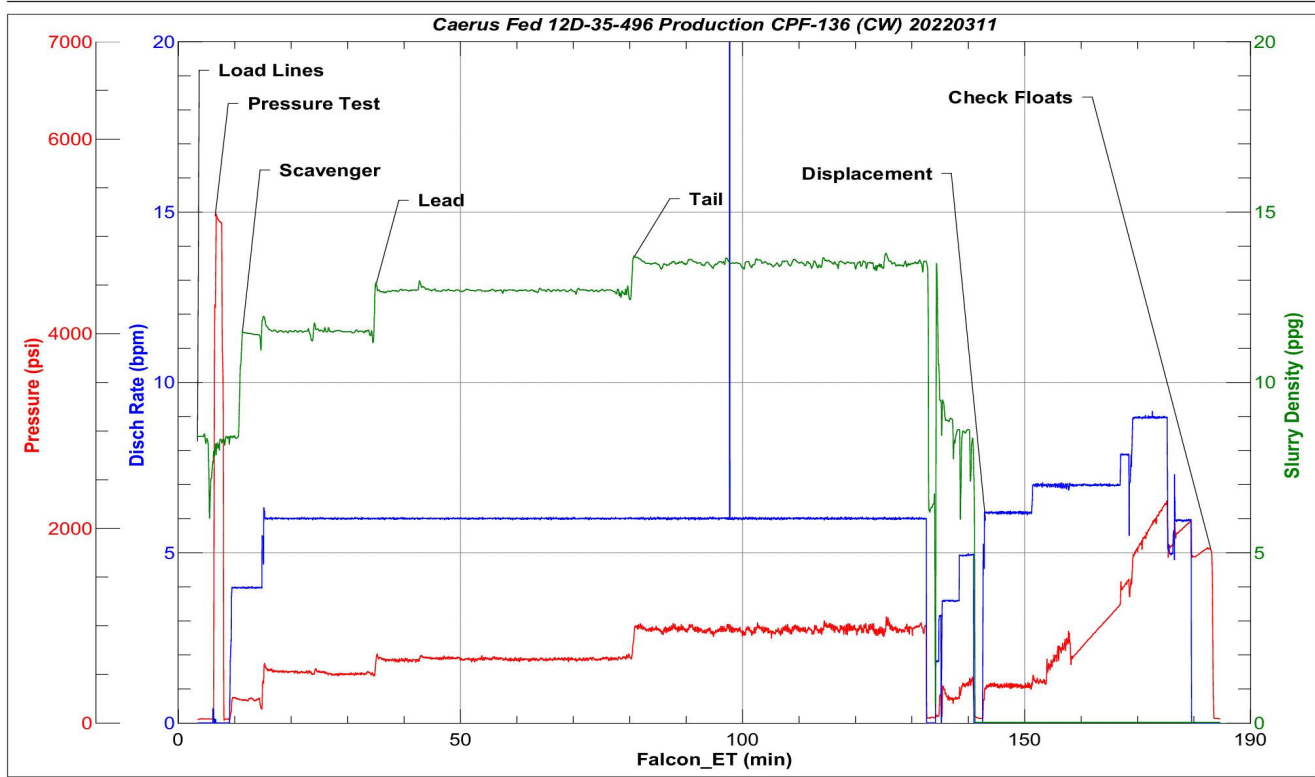


JobMaster Program Version 5.01C1

Job Number: 80449

Customer: Caerus

Well Name: BJU G35 Fed 12D-35-496



BJ Services

Job Start: Friday, March 11, 2022

Field Ticket

Service Charges

Part #	Name	Price List	Discount	Price	Unit	Quantity	Total
S-100004	Cement Crew Mobilization-Demobilization Fee	\$10,880.00	68.00%	\$3,481.60	ea	2	\$6,963.20
S-100060	Cement pump charge, 11,001-12,000 feet/3,301-3,600 m	\$20,112.00	68.00%	\$6,435.84	8/hr	1	\$6,435.84
S-100066	Cement pump charge, Additional Hours	\$2,720.00	50.00%	\$1,360.00	hr(s)	11	\$14,960.00
S-100678	Rig Heater	\$500.00	0.00%	\$500.00	ea	1	\$500.00
Total:							\$28,859.04

Material Charges

Part #	Name	Price List	Discount	Price	Unit	Quantity	Total
1001361	CEMENT, ASTM TYPE I/II	\$57.31	74.00%	\$14.90	sks	973	\$14,498.28
1001540	FOAM PREVENTER, FP-28L	\$131.36	74.00%	\$34.15	gals	20	\$683.07
1002283	FOAM PREVENTER, FP-24	\$14.52	74.00%	\$3.78	lbs	487	\$1,838.52
20000076	BONDING AGENT, BA-60	\$22.50	74.00%	\$5.85	lbs	416	\$2,433.60
L100021	CEMENT, CLASS G	\$47.08	74.00%	\$12.24	sks	565	\$6,916.05
L100051	SPACER SURFACTANT, SS-201	\$291.50	74.00%	\$75.79	gal	10	\$757.90
L100112	ACCELERATOR, SALT, CHLORIDE, CALCIUM, A-7P, PELLETS	\$2.40	74.00%	\$0.62	lbs	200	\$124.80
L100120	EXTENDER, BENTONITE	\$2.08	74.00%	\$0.54	lbs	5647	\$3,053.90
L100121	SAND, S-8, Silica Flour, 200 Mesh	\$0.48	74.00%	\$0.12	lbs	17920	\$2,236.42
L100283	RETARDER, R-3	\$4.00	74.00%	\$1.04	lbs	495	\$514.80
L100317	CEMENT, FLY ASH (POZZOLAN)	\$25.68	74.00%	\$6.68	sks	254	\$1,695.91
L100323	MUD REMOVAL, SAPP	\$6.24	74.00%	\$1.62	lbs	200	\$324.48
L100404	SALT,SODIUM CHLORIDE, A-5	\$1.04	74.00%	\$0.27	lbs	0	\$0.00
L101191	FLUID LOSS, FL-24	\$57.20	74.00%	\$14.87	lbs	284	\$4,223.65
L101310	ResCare CS-2	\$33.68	74.00%	\$8.76	gals	15	\$131.35
L411222	IntegraSeal PHENO	\$3.04	74.00%	\$0.79	lbs	5310	\$4,197.02
L488269	FLUID LOSS, FL-66	\$35.28	74.00%	\$9.17	lbs	345	\$3,164.62
L488466	IntegraGuard GW-86	\$73.12	74.00%	\$19.01	lbs	114	\$2,167.28
L499632	RETARDER, SUGAR, GRANULAR	\$4.16	74.00%	\$1.08	lbs	0	\$0.00
L499680	ANTI STATIC ADDITIVE, STATIC FREE	\$12.72	74.00%	\$3.31	lbs	11	\$36.38
Total:							\$48,998.03

Grand Total

Services	Materials	Casing Equipment	Top Out	Grand Total
\$28,859.04	\$48,998.03	\$0.00	\$0.00	\$77,857.07