

BJU G35 FED 12D-35 496
Garfield County, CO
Q220192 & RM-220180
Design #3

Company Name: Caerus Oil & Gas
BJU G35 FED 12D-35 496
Garfield County, CO
Rig: H&P#329
Created By: Will Jircik
Date: 9:20, March 07 2022

WELL DETAILS: BJU G35 FED 12D-35 496					
			8164.0		
+N/-S	+E/-W	Northing	Easting	Latitude	Longitude
0.0	0.0	14415358.60	2446993.30	39.660649	-108.134328 12D-35

PROJECT DETAILS:	
Garfield County, CO	
System Datum:	Universal Transverse Mercator (US Survey Feet)
Datum:	NAD 1927 - Western US
Ellipsoid:	Clarke 1866
Zone:	Zone 12N (114 W to 108 W)
Geodetic System:	Mean Sea Level

DESIGN TARGET DETAILS						
Name	TVD	+N/-S	+E/-W	Northing	Easting	Latitude
12D-35 - OHCR	7810.0	224.9	-2465.0	14415504.63	2444522.38	39.661266
12D-35 - PBHL	11592.0	154.3	-2535.9	14415431.80	2444453.80	39.661072
						Longitude
						-108.143081
						-108.143332

FORMATION TOP DETAILS		
TVDPath	MDPath	Formation
2527.0	2644.3	Wasatch
5827.0	5826.9	Wasatch G
5807.0	6124.0	Fort Union
7810.0	8222.6	Ohio Creek
7810.0	8222.6	TOG
8057.0	8468.6	Williams Fork
10794.0	11207.6	Cameo
11392.0	11805.8	Rollins

T

M

Azimuths to True North

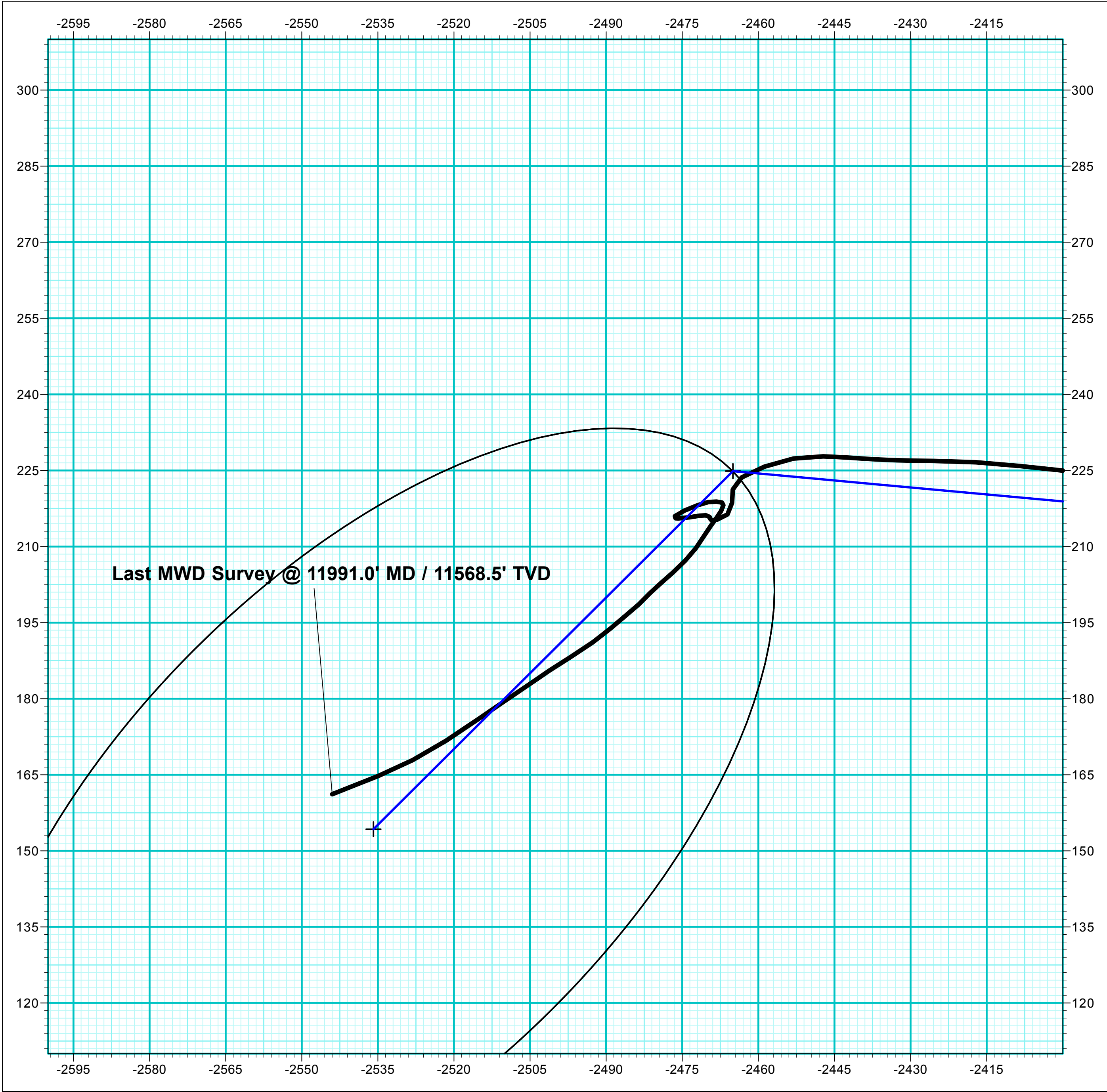
Magnetic North: 9.25°

Strength: 51108.6nT

Dip Angle: 65.72°

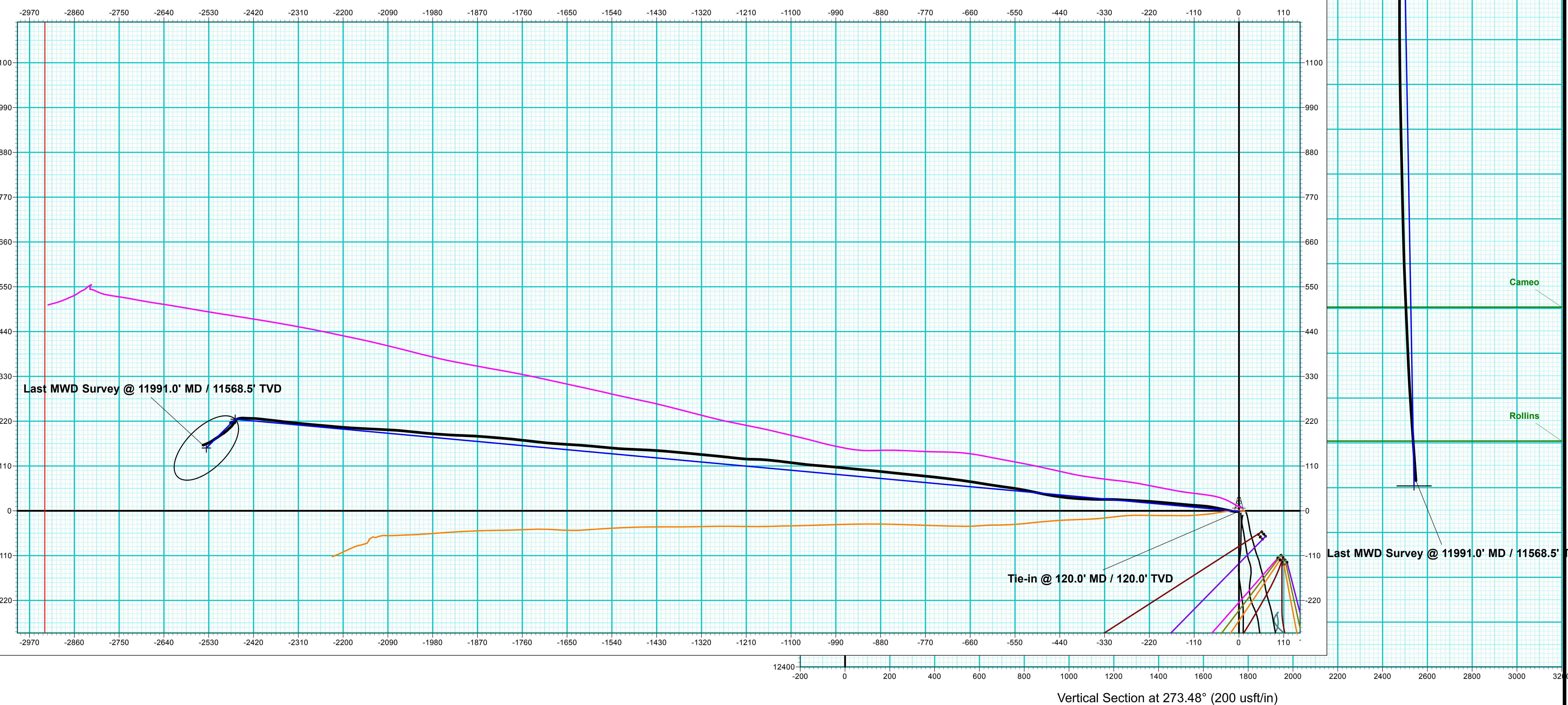
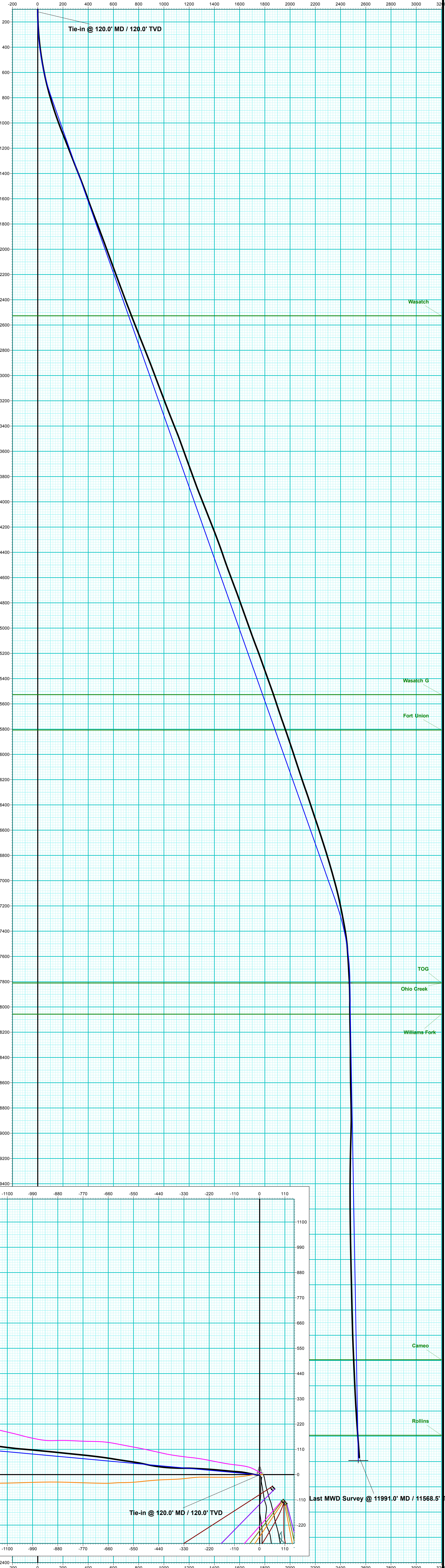
Date: 2/24/2022

Model: HDGM2022



ANNOTATIONS							
MD	Inc	Azi	TVD	+N/-S	+E/-W	VSecDeparture	Annotation
120.0	0.88	203.18	120.0	-1.0	0.0	-0.1	1.1 Tie-in @ 120.0' MD / 120.0' TVD
11991.0	4.50	248.40	11568.5	161.2	-2544.0	2549.1	2608.1 Last MWD Survey @ 11991.0' MD / 11568.5' TVD

DESIGN ANNOTATIONS							
MD	Inc	Azi	TVD	+N/-S	+E/-W	VSecDeparture	Annotation
120.0	0.88	203.18	120.0	-1.0	0.0	-0.1	0.0 Conductor Tie in / Build 3° / 100'
157.0	1.00	275.24	157.0	-1.3	-0.4	0.3	0.6 EOB @ 1.00° Inc. / 275.24° Azm
200.0	1.00	275.24	200.0	-1.2	-1.2	1.1	1.4 Build 3° / 100'
816.7	19.50	275.24	804.2	8.8	-110.0	110.3	110.6 EOB @ 19.50° Inc. / 275.24° Azm
7572.5	19.50	275.24	7172.4	214.8	-2355.9	2364.6	2366.0 Drop 3° / 100'
8222.6	0.00	0.00	7810.0	224.9	-2465.0	2474.1	2475.5 EOD @ Vertical / Build 1.5° / 100'
8324.9	1.54	225.11	7912.4	223.9	-2466.0	2475.0	2476.9 EOB @ 1.54° Inc. / 225.11° Azm
12005.9	1.54	225.11	11592.0	154.3	-2535.9	2540.6	2575.6 TD @ 12005.9' MD / 11592.0' TVD





Caerus Oil & Gas

Garfield County, CO

NPM G35 496 Pad

BJU G35 FED 12D-35 496 - Slot 12D-35

Wellbore #1

Design: Wellbore #1

KLX Survey Report

07 March, 2022



Company:	Caerus Oil & Gas	Local Co-ordinate Reference:	Well BJU G35 FED 12D-35 496 - Slot 12D-35
Project:	Garfield County, CO	TVD Reference:	RKB @ 8194.0usft (H&P#329)
Site:	NPM G35 496 Pad	MD Reference:	RKB @ 8194.0usft (H&P#329)
Well:	BJU G35 FED 12D-35 496	North Reference:	True
Wellbore:	Wellbore #1	Survey Calculation Method:	Minimum Curvature
Design:	Wellbore #1	Database:	EDM 5000.1 Single User Db

Project	Garfield County, CO		
Map System:	Universal Transverse Mercator (US Survey Feet)	System Datum:	Mean Sea Level
Geo Datum:	NAD 1927 - Western US		
Map Zone:	Zone 12N (114 W to 108 W)		

Site	NPM G35 496 Pad		
Site Position:		Northing:	14,415,365.20 usft
From:	Map	Easting:	2,447,000.80 usft
Position Uncertainty:	0.0 usft	Slot Radius:	13-3/16 "
		Latitude:	39.660667
		Longitude:	-108.134301
		Grid Convergence:	1.83 °

Well	BJU G35 FED 12D-35 496 - Slot 12D-35		
Well Position	+N/-S	0.0 usft	Latitude: 39.660650
	+E/-W	0.0 usft	Longitude: -108.134329
Position Uncertainty	0.0 usft	Wellhead Elevation:	usft
		Ground Level:	8,164.0 usft

Wellbore	Wellbore #1				
Magnetics	Model Name	Sample Date	Declination (°)	Dip Angle (°)	Field Strength (nT)
	HDGM2022	2/24/2022	9.25	65.72	51,108.60000000

Design	Wellbore #1				
Audit Notes:					
Version:	1.0	Phase:	ACTUAL	Tie On Depth:	0.0
Vertical Section:	Depth From (TVD) (usft)	+N/-S (usft)	+E/-W (usft)	Direction (°)	
	0.0	0.0	0.0	273.62	

Survey Program	Date	3/7/2022			
From (usft)	To (usft)	Survey (Wellbore)	Tool Name	Description	
30.0	120.0	Sfc Gyro (Wellbore #1)	GYRO-NS	OWSG Gyrocompass Gyro	
239.0	11,991.0	KLX MWD (Wellbore #1)	MWD	OWSG MWD - Standard	

Survey										
Measured Depth (usft)	Inclination (°)	Azimuth (°)	Vertical Depth (usft)	+N/-S (usft)	+E/-W (usft)	Vertical Section (usft)	Dogleg Rate (°/100usft)	Build Rate (°/100usft)	Turn Rate (°/100usft)	
0.0	0.00	0.00	0.0	0.0	0.0	0.0	0.00	0.00	0.00	
30.0	0.00	0.00	30.0	0.0	0.0	0.0	0.00	0.00	0.00	
60.0	0.50	149.90	60.0	-0.1	0.1	-0.1	1.67	1.67	0.00	
90.0	1.13	182.63	90.0	-0.5	0.1	-0.2	2.53	2.10	109.10	
Tie-in @ 120.0' MD / 120.0' TVD										
120.0	0.88	203.18	120.0	-1.0	0.0	-0.1	1.45	-0.83	68.50	
239.0	3.30	271.70	238.9	-1.8	-3.8	3.7	2.60	2.03	57.58	
330.0	5.30	269.70	329.7	-1.7	-10.6	10.5	2.20	2.20	-2.20	
421.0	7.60	284.40	420.1	-0.2	-20.6	20.6	3.09	2.53	16.15	
512.0	9.70	281.30	510.0	2.8	-34.0	34.1	2.36	2.31	-3.41	

Company:	Caerus Oil & Gas	Local Co-ordinate Reference:	Well BJU G35 FED 12D-35 496 - Slot 12D-35
Project:	Garfield County, CO	TVD Reference:	RKB @ 8194.0usft (H&P#329)
Site:	NPM G35 496 Pad	MD Reference:	RKB @ 8194.0usft (H&P#329)
Well:	BJU G35 FED 12D-35 496	North Reference:	True
Wellbore:	Wellbore #1	Survey Calculation Method:	Minimum Curvature
Design:	Wellbore #1	Database:	EDM 5000.1 Single User Db

Survey									
Measured Depth (usft)	Inclination (°)	Azimuth (°)	Vertical Depth (usft)	+N/-S (usft)	+E/-W (usft)	Vertical Section (usft)	Dogleg Rate (°/100usft)	Build Rate (°/100usft)	Turn Rate (°/100usft)
606.0	11.60	281.60	602.4	6.2	-51.0	51.3	2.02	2.02	0.32
701.0	13.80	279.00	695.1	9.9	-71.5	72.0	2.39	2.32	-2.74
796.0	15.80	273.50	786.9	12.5	-95.7	96.2	2.57	2.11	-5.79
890.0	17.70	275.00	876.9	14.5	-122.7	123.3	2.07	2.02	1.60
985.0	19.60	275.60	966.9	17.3	-152.9	153.7	2.01	2.00	0.63
1,079.0	21.10	275.30	1,055.1	20.4	-185.5	186.4	1.60	1.60	-0.32
1,174.0	21.80	273.80	1,143.5	23.2	-220.1	221.1	0.94	0.74	-1.58
1,268.0	21.40	272.80	1,230.9	25.2	-254.6	255.7	0.58	-0.43	-1.06
1,363.0	21.20	273.30	1,319.4	27.0	-289.1	290.2	0.28	-0.21	0.53
1,458.0	21.80	269.80	1,407.8	27.9	-323.9	325.0	1.49	0.63	-3.68
1,552.0	20.70	271.70	1,495.4	28.3	-357.9	359.0	1.38	-1.17	2.02
1,647.0	19.20	273.00	1,584.7	29.7	-390.3	391.4	1.65	-1.58	1.37
1,742.0	20.60	276.20	1,674.0	32.3	-422.5	423.7	1.87	1.47	3.37
1,836.0	21.10	279.30	1,761.9	36.8	-455.7	457.1	1.29	0.53	3.30
1,931.0	20.90	282.10	1,850.6	43.1	-489.1	490.9	1.08	-0.21	2.95
2,026.0	20.80	281.40	1,939.4	50.0	-522.2	524.3	0.28	-0.11	-0.74
2,120.0	19.80	278.10	2,027.5	55.6	-554.3	556.8	1.62	-1.06	-3.51
2,215.0	20.20	277.90	2,116.8	60.1	-586.5	589.1	0.43	0.42	-0.21
2,310.0	20.50	279.30	2,205.9	65.0	-619.2	622.1	0.60	0.32	1.47
2,404.0	20.40	279.30	2,293.9	70.3	-651.6	654.7	0.11	-0.11	0.00
2,499.0	20.80	277.30	2,382.9	75.1	-684.7	688.0	0.85	0.42	-2.11
2,593.0	20.90	277.10	2,470.7	79.3	-717.9	721.4	0.13	0.11	-0.21
2,688.0	21.30	276.10	2,559.3	83.3	-751.8	755.6	0.57	0.42	-1.05
2,783.0	21.80	275.70	2,647.7	86.9	-786.5	790.5	0.55	0.53	-0.42
2,878.0	21.70	275.60	2,735.9	90.3	-821.6	825.6	0.11	-0.11	-0.11
2,953.0	21.80	276.30	2,805.6	93.2	-849.2	853.4	0.37	0.13	0.93
3,071.0	21.10	275.70	2,915.4	97.7	-892.1	896.5	0.62	-0.59	-0.51
3,165.0	20.40	275.40	3,003.3	100.9	-925.3	929.8	0.75	-0.74	-0.32
3,260.0	21.00	275.70	3,092.2	104.2	-958.7	963.4	0.64	0.63	0.32
3,354.0	21.00	275.50	3,179.9	107.5	-992.2	997.0	0.08	0.00	-0.21
3,449.0	20.40	274.30	3,268.8	110.3	-1,025.7	1,030.6	0.77	-0.63	-1.26
3,544.0	22.30	275.70	3,357.3	113.4	-1,060.1	1,065.2	2.07	2.00	1.47
3,638.0	21.80	277.80	3,444.4	117.5	-1,095.2	1,100.4	0.99	-0.53	2.23
3,733.0	19.60	276.90	3,533.3	121.8	-1,128.5	1,133.9	2.34	-2.32	-0.95
3,828.0	19.90	274.80	3,622.7	125.1	-1,160.4	1,166.0	0.81	0.32	-2.21
3,922.0	20.30	270.30	3,711.0	126.5	-1,192.6	1,198.3	1.70	0.43	-4.79
4,017.0	19.60	276.30	3,800.3	128.3	-1,225.0	1,230.6	2.28	-0.74	6.32
4,112.0	20.90	276.30	3,889.4	132.0	-1,257.7	1,263.5	1.37	1.37	0.00
4,206.0	22.00	275.40	3,976.9	135.5	-1,291.8	1,297.8	1.22	1.17	-0.96
4,301.0	21.20	275.50	4,065.2	138.8	-1,326.7	1,332.8	0.84	-0.84	0.11
4,396.0	22.00	275.40	4,153.5	142.1	-1,361.5	1,367.7	0.84	0.84	-0.11
4,490.0	21.10	275.10	4,241.0	145.3	-1,395.9	1,402.2	0.96	-0.96	-0.32
4,585.0	20.20	273.80	4,329.9	147.9	-1,429.3	1,435.7	1.06	-0.95	-1.37

Company:	Caerus Oil & Gas	Local Co-ordinate Reference:	Well BJU G35 FED 12D-35 496 - Slot 12D-35
Project:	Garfield County, CO	TVD Reference:	RKB @ 8194.0usft (H&P#329)
Site:	NPM G35 496 Pad	MD Reference:	RKB @ 8194.0usft (H&P#329)
Well:	BJU G35 FED 12D-35 496	North Reference:	True
Wellbore:	Wellbore #1	Survey Calculation Method:	Minimum Curvature
Design:	Wellbore #1	Database:	EDM 5000.1 Single User Db

Survey										
Measured Depth (usft)	Inclination (°)	Azimuth (°)	Vertical Depth (usft)	+N/-S (usft)	+E/-W (usft)	Vertical Section (usft)	Dogleg Rate (°/100usft)	Build Rate (°/100usft)	Turn Rate (°/100usft)	
4,679.0	18.90	272.70	4,418.5	149.7	-1,460.7	1,467.2	1.44	-1.38	-1.17	
4,774.0	19.60	272.30	4,508.1	151.0	-1,491.9	1,498.5	0.75	0.74	-0.42	
4,869.0	20.60	274.10	4,597.4	152.9	-1,524.5	1,531.2	1.24	1.05	1.89	
4,963.0	20.90	275.90	4,685.3	155.8	-1,557.7	1,564.4	0.75	0.32	1.91	
5,058.0	19.50	275.10	4,774.4	158.9	-1,590.4	1,597.2	1.50	-1.47	-0.84	
5,153.0	20.00	273.80	4,863.8	161.4	-1,622.4	1,629.3	0.70	0.53	-1.37	
5,248.0	19.30	273.40	4,953.3	163.4	-1,654.2	1,661.3	0.75	-0.74	-0.42	
5,342.0	19.80	274.20	5,041.9	165.5	-1,685.6	1,692.7	0.60	0.53	0.85	
5,437.0	21.10	276.50	5,130.9	168.6	-1,718.7	1,725.9	1.61	1.37	2.42	
5,531.0	20.00	276.80	5,218.9	172.4	-1,751.4	1,758.8	1.18	-1.17	0.32	
5,626.0	19.20	275.40	5,308.4	175.8	-1,783.1	1,790.7	0.98	-0.84	-1.47	
5,720.0	20.10	275.00	5,396.9	178.7	-1,814.6	1,822.3	0.97	0.96	-0.43	
5,815.0	19.50	274.30	5,486.3	181.3	-1,846.7	1,854.4	0.68	-0.63	-0.74	
5,909.0	18.20	274.20	5,575.3	183.5	-1,877.0	1,884.8	1.38	-1.38	-0.11	
6,004.0	18.50	271.20	5,665.4	184.9	-1,906.8	1,914.7	1.04	0.32	-3.16	
6,099.0	19.70	273.50	5,755.2	186.2	-1,937.9	1,945.8	1.49	1.26	2.42	
6,193.0	18.90	274.10	5,843.9	188.3	-1,968.9	1,976.9	0.88	-0.85	0.64	
6,288.0	18.40	275.70	5,933.9	190.9	-1,999.2	2,007.2	0.75	-0.53	1.68	
6,382.0	18.40	275.70	6,023.1	193.8	-2,028.7	2,036.9	0.00	0.00	0.00	
6,477.0	17.80	275.30	6,113.4	196.7	-2,058.1	2,066.4	0.64	-0.63	-0.42	
6,572.0	19.10	272.70	6,203.5	198.7	-2,088.0	2,096.4	1.62	1.37	-2.74	
6,666.0	19.20	273.10	6,292.3	200.3	-2,118.8	2,127.3	0.18	0.11	0.43	
6,761.0	17.90	272.50	6,382.4	201.8	-2,149.0	2,157.5	1.38	-1.37	-0.63	
6,855.0	18.50	273.70	6,471.7	203.4	-2,178.3	2,186.8	0.75	0.64	1.28	
6,950.0	18.50	275.00	6,561.8	205.7	-2,208.4	2,217.0	0.43	0.00	1.37	
7,044.0	17.90	275.00	6,651.1	208.2	-2,237.6	2,246.3	0.64	-0.64	0.00	
7,139.0	17.60	275.00	6,741.6	210.7	-2,266.5	2,275.3	0.32	-0.32	0.00	
7,233.0	16.60	275.50	6,831.4	213.3	-2,294.0	2,302.9	1.08	-1.06	0.53	
7,328.0	16.00	276.10	6,922.6	216.0	-2,320.5	2,329.6	0.66	-0.63	0.63	
7,423.0	15.30	276.60	7,014.1	218.8	-2,346.0	2,355.1	0.75	-0.74	0.53	
7,517.0	13.50	277.00	7,105.1	221.6	-2,369.2	2,378.5	1.92	-1.91	0.43	
7,612.0	11.60	275.90	7,197.8	223.9	-2,389.7	2,399.1	2.02	-2.00	-1.16	
7,707.0	11.10	276.20	7,291.0	225.9	-2,408.3	2,417.8	0.53	-0.53	0.32	
7,801.0	9.90	270.30	7,383.4	226.9	-2,425.4	2,434.9	1.71	-1.28	-6.28	
7,895.0	6.50	274.00	7,476.4	227.3	-2,438.8	2,448.3	3.66	-3.62	3.94	
7,990.0	3.70	272.10	7,571.0	227.8	-2,447.2	2,456.7	2.95	-2.95	-2.00	
8,084.0	3.50	258.80	7,664.9	227.3	-2,453.1	2,462.5	0.91	-0.21	-14.15	
8,179.0	3.70	250.50	7,759.7	225.7	-2,458.8	2,468.2	0.59	0.21	-8.74	
8,273.0	2.40	235.50	7,853.5	223.6	-2,463.3	2,472.5	1.61	-1.38	-15.96	
8,368.0	1.50	185.30	7,948.5	221.3	-2,465.0	2,474.1	1.94	-0.95	-52.84	
8,463.0	1.70	181.70	8,043.5	218.6	-2,465.2	2,474.1	0.24	0.21	-3.79	
8,557.0	1.50	224.00	8,137.4	216.3	-2,466.1	2,474.8	1.24	-0.21	45.00	
8,652.0	1.50	261.80	8,232.4	215.3	-2,468.2	2,476.9	1.02	0.00	39.79	

Company:	Caerus Oil & Gas	Local Co-ordinate Reference:	Well BJU G35 FED 12D-35 496 - Slot 12D-35
Project:	Garfield County, CO	TVD Reference:	RKB @ 8194.0usft (H&P#329)
Site:	NPM G35 496 Pad	MD Reference:	RKB @ 8194.0usft (H&P#329)
Well:	BJU G35 FED 12D-35 496	North Reference:	True
Wellbore:	Wellbore #1	Survey Calculation Method:	Minimum Curvature
Design:	Wellbore #1	Database:	EDM 5000.1 Single User Db

Survey									
Measured Depth (usft)	Inclination (°)	Azimuth (°)	Vertical Depth (usft)	+N/-S (usft)	+E/-W (usft)	Vertical Section (usft)	Dogleg Rate (°/100usft)	Build Rate (°/100usft)	Turn Rate (°/100usft)
8,746.0	0.30	358.80	8,326.4	215.3	-2,469.4	2,478.1	1.67	-1.28	103.19
8,841.0	0.40	321.10	8,421.4	215.8	-2,469.6	2,478.3	0.26	0.11	-39.68
8,935.0	0.60	276.80	8,515.4	216.1	-2,470.3	2,479.0	0.45	0.21	-47.13
9,030.0	1.00	260.50	8,610.4	216.1	-2,471.6	2,480.3	0.48	0.42	-17.16
9,125.0	1.30	261.80	8,705.3	215.8	-2,473.5	2,482.2	0.32	0.32	1.37
9,220.0	1.40	266.40	8,800.3	215.6	-2,475.7	2,484.4	0.16	0.11	4.84
9,314.0	0.80	40.50	8,894.3	216.0	-2,476.5	2,485.2	2.17	-0.64	142.66
9,409.0	1.90	67.60	8,989.3	217.1	-2,474.6	2,483.3	1.31	1.16	28.53
9,503.0	1.50	68.20	9,083.2	218.1	-2,472.0	2,480.8	0.43	-0.43	0.64
9,598.0	1.20	79.60	9,178.2	218.8	-2,469.9	2,478.7	0.42	-0.32	12.00
9,692.0	0.80	99.30	9,272.2	218.8	-2,468.2	2,477.1	0.56	-0.43	20.96
9,787.0	0.50	99.30	9,367.2	218.7	-2,467.2	2,476.1	0.32	-0.32	0.00
9,881.0	0.60	194.50	9,461.2	218.1	-2,466.9	2,475.7	0.87	0.11	101.28
9,976.0	0.90	206.40	9,556.2	217.0	-2,467.3	2,476.1	0.35	0.32	12.53
10,070.0	1.10	220.00	9,650.2	215.6	-2,468.3	2,477.0	0.33	0.21	14.47
10,165.0	1.10	212.00	9,745.2	214.2	-2,469.3	2,477.9	0.16	0.00	-8.42
10,259.0	1.80	214.50	9,839.1	212.2	-2,470.6	2,479.1	0.75	0.74	2.66
10,354.0	1.80	213.00	9,934.1	209.7	-2,472.3	2,480.6	0.05	0.00	-1.58
10,448.0	2.20	226.60	10,028.0	207.2	-2,474.4	2,482.6	0.66	0.43	14.47
10,543.0	1.90	225.50	10,123.0	204.9	-2,476.9	2,484.9	0.32	-0.32	-1.16
10,637.0	1.90	231.70	10,216.9	202.8	-2,479.2	2,487.1	0.22	0.00	6.60
10,732.0	1.70	222.20	10,311.9	200.8	-2,481.4	2,489.1	0.38	-0.21	-10.00
10,827.0	2.00	227.00	10,406.8	198.6	-2,483.5	2,491.1	0.36	0.32	5.05
10,921.0	2.20	231.70	10,500.7	196.4	-2,486.2	2,493.6	0.28	0.21	5.00
11,016.0	2.50	228.30	10,595.7	193.9	-2,489.1	2,496.4	0.35	0.32	-3.58
11,110.0	2.90	234.70	10,689.6	191.1	-2,492.6	2,499.7	0.53	0.43	6.81
11,205.0	3.30	238.20	10,784.4	188.3	-2,496.9	2,503.8	0.47	0.42	3.68
11,299.0	3.00	236.30	10,878.3	185.5	-2,501.2	2,508.0	0.34	-0.32	-2.02
11,394.0	3.20	235.00	10,973.1	182.6	-2,505.5	2,512.0	0.22	0.21	-1.37
11,488.0	3.40	236.50	11,067.0	179.6	-2,509.9	2,516.3	0.23	0.21	1.60
11,583.0	4.50	235.00	11,161.8	175.9	-2,515.3	2,521.4	1.16	1.16	-1.58
11,678.0	4.60	237.40	11,256.5	171.7	-2,521.6	2,527.4	0.23	0.11	2.53
11,772.0	4.60	242.30	11,350.2	167.9	-2,528.1	2,533.7	0.42	0.00	5.21
11,867.0	4.50	248.30	11,444.9	164.7	-2,535.0	2,540.3	0.51	-0.11	6.32
11,932.0	4.50	248.40	11,509.7	162.9	-2,539.7	2,544.9	0.01	0.00	0.15
Last MWD Survey @ 11991.0' MD / 11568.5' TVD									
11,991.0	4.50	248.40	11,568.5	161.2	-2,544.0	2,549.1	0.00	0.00	0.00

Company:	Caerus Oil & Gas	Local Co-ordinate Reference:	Well BJU G35 FED 12D-35 496 - Slot 12D-35
Project:	Garfield County, CO	TVD Reference:	RKB @ 8194.0usft (H&P#329)
Site:	NPM G35 496 Pad	MD Reference:	RKB @ 8194.0usft (H&P#329)
Well:	BJU G35 FED 12D-35 496	North Reference:	True
Wellbore:	Wellbore #1	Survey Calculation Method:	Minimum Curvature
Design:	Wellbore #1	Database:	EDM 5000.1 Single User Db

Design Annotations				
Measured Depth (usft)	Vertical Depth (usft)	Local Coordinates		Comment
		+N/-S (usft)	+E/-W (usft)	
120.0	120.0	-1.0	0.0	Tie-in @ 120.0' MD / 120.0' TVD
11,991.0	11,568.5	161.2	-2,544.0	Last MWD Survey @ 11991.0' MD / 11568.5' TVD