

# LEGEND:

- = AS-DRILLED WELLHEAD.
- ◆ = TOP OF GAS INTERVAL.
- = BOTTOM HOLE.
- ▲ = SECTION CORNERS LOCATED. (NAD 83)
- △ = SECTION CORNERS RE-ESTABLISHED. (Not Set on Ground.) (NAD 83)

T4S, R96W, 6th P.M.

1953 Brass Cap,  
1.4' High, T-Post,  
5/8" Rebar  
Lat: 39.666078°  
Long: 108.145375°

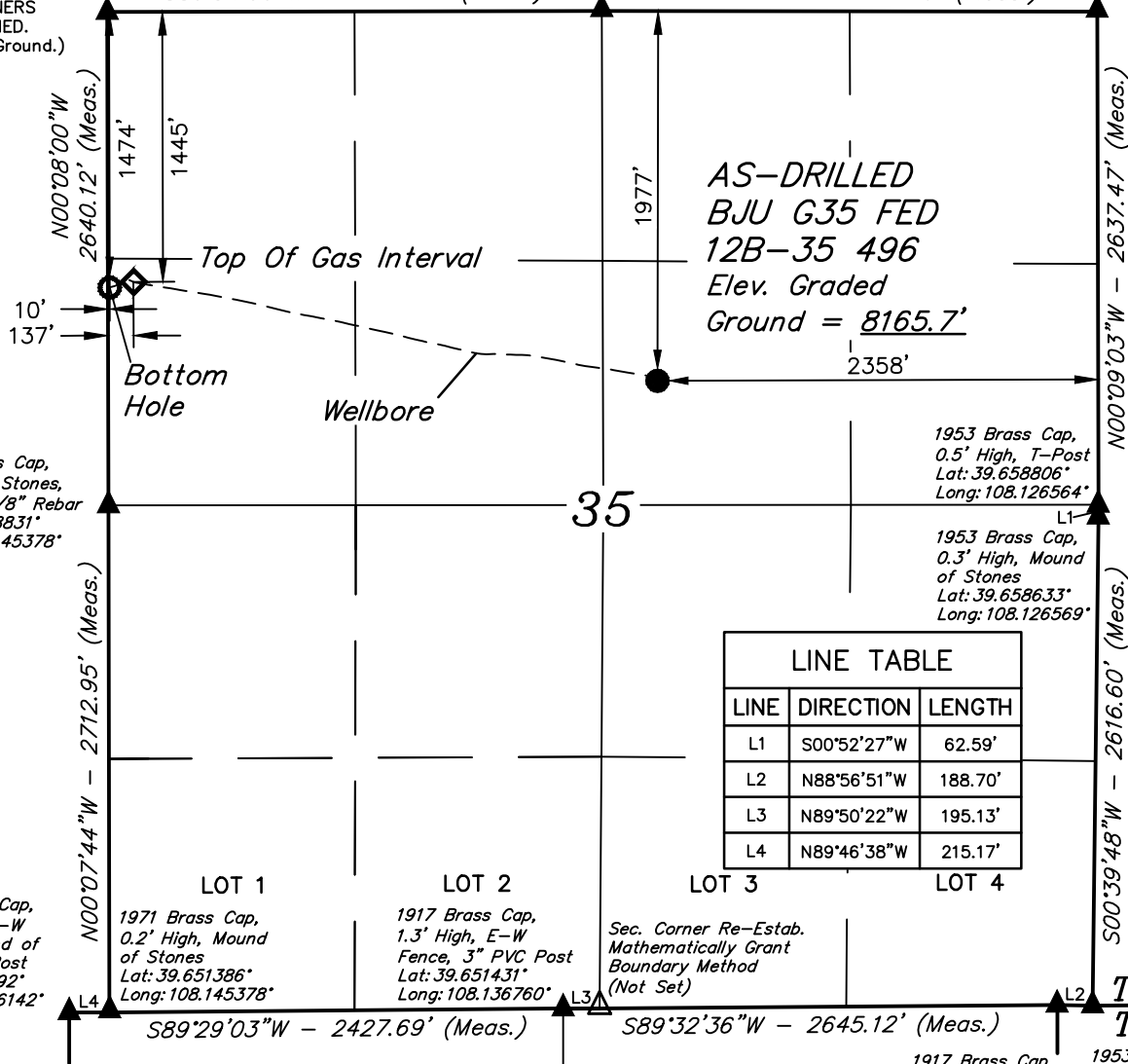
1953 Brass Cap,  
0.5' High, Mound  
of Stones  
Lat: 39.666072°  
Long: 108.135978°

1953 Brass Cap,  
0.8' High, Mound  
of Stones  
Lat: 39.666042°  
Long: 108.126567°

## BASIS OF BEARINGS

S89°54'00"W - 2647.29' (Meas.)

N89°55'01"W - 2650.56' (Meas.)



PDOP = 1.6

<b>NAD 83 (AS-DRILLED LOCATION)</b>	
LATITUDE = 39°39'38.31" (39.660642°)	
LONGITUDE = 108°08'05.77" (108.134936°)	
<b>NAD 27 (AS-DRILLED LOCATION)</b>	
LATITUDE = 39°39'38.40" (39.660667°)	
LONGITUDE = 108°08'03.48" (108.134301°)	
<b>UTM NAD 27 (ZONE 12)</b>	
N: 14415365.09' E: 2447000.87'	
<b>NAD 83 (TOP OF GAS INTERVAL)</b>	
LATITUDE = 39°39'43.60" (39.662111°)	
LONGITUDE = 108°08'41.60" (108.144889°)	
<b>NAD 27 (TOP OF GAS INTERVAL)</b>	
LATITUDE = 39°39'43.69" (39.662136°)	
LONGITUDE = 108°08'39.31" (108.144253°)	
<b>UTM NAD 27 (ZONE 12)</b>	
N: 14415810.75' E: 2444182.13'	

## NOTE:

- Distances referenced on plat to section lines are perpendicular.
- Wellbore data provided by Caerus Oil & Gas LLC.

<b>NAD 83 (BOTTOM HOLE)</b>	
LATITUDE = 39°39'43.31" (39.662032°)	
LONGITUDE = 108°08'43.23" (108.145342°)	
<b>NAD 27 (BOTTOM HOLE)</b>	
LATITUDE = 39°39'43.40" (39.662056°)	
LONGITUDE = 108°08'40.94" (108.144706°)	
<b>UTM NAD 27 (ZONE 12)</b>	
N: 14415777.69' E: 2444055.68'	



**BASIS OF BEARINGS**  
BEARINGS ARE A BASED ASSUMPTION THAT THE NORTH LINE OF THE NORTHEAST 1/4 OF SECTION 35 BEARS N89°55'01"W. MONUMENTS DESCRIBED HEREON.

**BASIS OF ELEVATION**  
BENCH MARK (H79) LOCATED IN THE NE 1/4 OF SECTION 35, T4S, R96W, 6th P.M., TAKEN FROM THE BULL FORK, QUADRANGLE, COLORADO, 7.5 MINUTE QUAD. (TOPOGRAPHIC MAP) PUBLISHED BY THE UNITED STATES DEPARTMENT OF THE INTERIOR, GEOLOGICAL SURVEY. SAID ELEVATION IS MARKED AS BEING 8535 FEET.



**UELS, LLC**  
Corporate Office \* 85 South 200 East  
Vernal, UT 84078 \* (435) 789-1017



**Caerus Oil & Gas LLC**

**AS-DRILLED BJU G35 FED 12B-35 496**  
SW 1/4 NE 1/4, SECTION 35, T4S, R96W, 6th P.M.  
GARFIELD COUNTY, COLORADO

SURVEYED BY	DENNIS PETTY	01-19-21	SCALE
DRAWN BY	M.D.	06-14-21	1" = 1000'
<b>AS-DRILLED WELL LOCATION PLAT</b>			