



Caerus Operating LLC

LONG STRING POST JOB REPORT

BJU G35 FED #12B-35-496 05-045-24334
S:35 T:4S R:96W Garfield CO

CallSheet #: 80356
Proposal #: 58069



LONG STRING Post Job Report

Attention: Mr. Cole Walton | (720) 880-6325 | cwalton@caerusoilandgas.com

Caerus Operating LLC

1001 17TH STREET | DENVER, CO 80202

Dear Mr. Cole Walton,

Thank you for the opportunity to provide cementing services on this well. American Cementing strives to achieve complete customer satisfaction. If you have any questions regarding the services or data provided, please contact American Cementing at any time.

Sincerely,

Michael Harold

Field Engineer II | (970) 773-3636 | michael.harold@americacementing.com

Field Office 28730 US-6, Rifle, CO 81650
Phone: (970) 657-1157

Job Details & Summary

Geometry

Type	Function	OD (in)	ID (in)	Weight (lb/ft)	Thread	Top (ft)	Bottom (ft)	Excess (%)
Casing	Outer	9.625	8.921	36	n/a	0	3000	0
Open Hole	Outer	n/a	8.75	n/a	n/a	3000	6839	25
Open Hole	Outer	n/a	8.75	n/a	n/a	6839	12039	0
Casing	Inner	4.5	4	11.6	n/a	0	12039	0

Equipment / People

Unit Type	Unit	Power Unit	Employee #1
Field Storage Silo	FSS(CTS)-469		
Field Storage Silo	FSS(CTS)-468		
AS Cement Trailer	CTF-901	TRC(TRB)-425	
Cement Trailer	CTF-161	TRC(TRB)-090	Carrasco, Joel
AS Cement Trailer	CTF-9299	TRC(TRB)-195	
AS Cement Trailer	CTF-7145	TRC(TRB)-194	
AS Cement Trailer	CTF-048	TRB-421	
Cement Pump	CPF-058	TRH-959	Hale, Jason
Light Duty Vehicles	LDV-082		Kelsey, John

Timing

Event	Date/Time
Call Out	2/27/2022 14:00
Depart Facility	2/27/2022 17:00
On Location	2/27/2022 19:00
Rig Up Iron	2/28/2022 02:30
Job Started	2/28/2022 07:23
Job Completed	2/28/2022 10:20
Rig Down Iron	2/28/2022 10:30
Depart Location	2/28/2022 11:45

General Job Information

Metrics	Value
Well Fluid Density	10.3 lb/gal
Well Fluid Type	WBM
Rig Circulation Vol	600 bbls
Rig Circulation Time	1 hours
Calculated Displacement	187 bbls
Actual Displacement	187 bbls
Total Spacer to Surface	0 bbls
Total CMT to Surface	0 bbls
Well Topped Out	n/a

Job Details

Metrics	Value
Flare Prior to Job	No
Flare Prior to Job	0 units
Flare During Job	No
Flare During Job	0 units
Flare at End of Job	No
Flare at End of Job	0 units
Well Full Prior to Job	Yes
Well Fluid Density Into Well	10.3 lb/gal
Well Fluid Density Out of Well	10.5 lb/gal

Job Details (cont.)

Metrics	Value
BHCT	207 °F
BHST	271 °F

Water Analysis

Metrics	Value	Recommended
Water Source	Flat Tank	
Temperature	45 °F	50-80 °F
pH Level	6	5.5-8.5
Chlorides	0 mg/L	0-3000 mg/L
Total Alkalinity	80	0-1000
Total Hardness	>450 mg/L	0-500 mg/L
Carbonates	0 mg/L	0-100 mg/L
Sulfates	<200 mg/L	0-1500 mg/L
Potassium	0 mg/L	0-3000 mg/L
Iron	0 mg/L	0-300 mg/L

Circulation

Lost Circulation Experienced	Losses into Spacer	Losses into Cement	Losses into Displacement
Yes	0	0	0

Circulation Details

Returns prior to job with parasite air, Begin Parasite air @ 0 away spacer. No returns at beginning of cement until 10 Away Mud Flush. Kill parasite air @ 100 away on tail cement. Lost returns @ 120 Tail cement away. No returns remainder of job. Estimated 533 bbls mud recovered

Job Execution Information

Fluid	Product	Function	Density (lb/gal)	Yield (ft ³ /sk)	Water Rq. (gal/sk)	Water Rq. (gal/bbl)	Volume (sks)	Volume (bbl)	Designed Top (ft)
1	Mud Flush	Flush	8.45			40.86		20.00	658
2	Scav Cement	Scavenger	11.50	2.76	16.68		235.00	115.48	1005
3	Lead Cement	Lead	12.70	2.00	11.00		737.00	262.79	3000
4	Tail Cement	Tail	13.50	2.00	9.66		802.00	285.20	6839
5	Water + KCL Sub	DisplacementFinal	8.34			42.00		187.00	0

Job Fluid Details

Fluid	Type	Fluid	Product	Function	Conc.	Uom
1	Flush	Mud Flush	SAPP	Surfactant	10.00	lb/bbl
1	Flush	Mud Flush	SS-201	Surfactant	0.50	gal/bbl
2	Scavenger	Scav Cement	ASTM TYPE I/II	Cement	100.00	%
2	Scavenger	Scav Cement	BA-60	GasMigration	0.30	%BWOB
2	Scavenger	Scav Cement	FP-24	Defoamer	0.30	%BWOB
2	Scavenger	Scav Cement	GW-86	Viscosifier	0.20	%BWOB
2	Scavenger	Scav Cement	IntegraSeal PHENO	LostCirculation	3.00	lb/sk
2	Scavenger	Scav Cement	R-3	Retarder	0.50	%BWOB
2	Scavenger	Scav Cement	STATIC FREE	Other	0.01	lb/sk
3	Lead	Lead Cement	ASTM TYPE I/II	Cement	100.00	%
3	Lead	Lead Cement	BA-60	GasMigration	0.30	%BWOB
3	Lead	Lead Cement	FL-66	FluidLoss	0.50	%BWOB
3	Lead	Lead Cement	FP-24	Defoamer	0.30	%BWOB
3	Lead	Lead Cement	GW-86	Viscosifier	0.10	%BWOB
3	Lead	Lead Cement	IntegraSeal PHENO	LostCirculation	3.00	lb/sk
3	Lead	Lead Cement	R-3	Retarder	0.30	%BWOB
3	Lead	Lead Cement	STATIC FREE	Other	0.01	lb/sk
4	Tail	Tail Cement	CLASS G	Cement	70.00	%
4	Tail	Tail Cement	FLY ASH (POZZOLAN)	Extender	30.00	%
4	Tail	Tail Cement	BA-60	GasMigration	0.20	%BWOB
4	Tail	Tail Cement	BENTONITE	Viscosifier	8.00	%BWOB
4	Tail	Tail Cement	FL-24	FluidLoss	0.40	%BWOB
4	Tail	Tail Cement	FP-24	Defoamer	0.30	%BWOB
4	Tail	Tail Cement	IntegraSeal PHENO	LostCirculation	3.00	lb/sk
4	Tail	Tail Cement	R-3	Retarder	0.25	%BWOB
4	Tail	Tail Cement	S-8	StrengthRetrogression	25.00	%BWOB

Job Logs

Line	Event	Date (MM/DD/YY)	Time (HH:MM)	Density (lb/gal)	Pump Rate (bpm)	Pump Volume (bbls)	Pipe Pressure (psi)	Comment
1	Callout	2/27/2022	14:00					Crew called to prepare for a production cement job with an RTS of 19:30
2	Safety Meeting	2/27/2022	16:45					Journey management meeting
3	Depart yard	2/27/2022	17:00					Crew departs Rifle, CO yard for location
4	Arrive on Location	2/27/2022	19:00					Arrive on location, verify all proper equipment and products needed are on location, verify job procedure with the customer
5	Standby	2/27/2022	19:15					Crew on standby while rig runs casing, having issues between 6k and 7k feet with getting casing in hole
6	Safety Meeting	2/28/2022	02:15					Rig up meeting
7	Spot Units	2/28/2022	02:20					Spot all equipment for rig up
8	Rig Up	2/28/2022	02:30					Rig up all equipment
9	Standby	2/28/2022	04:00					Crew on standby while rig runs casing
10	Load Lines	2/28/2022	07:23	8.34	2	3	40	Load lines for psi test
11	Pressure Test	2/28/2022	07:25	8.34	1	1	5100	PSI test pump and lines to cement head
12	Mud Flush	2/28/2022	07:26	8.45	5	20	200	20 bbls mud flush Start Parasite air 800 CFM gained returns @ 10 away
13	Sacenger Cement	2/28/2022	07:31	11.5	5	10	430	115 BBLS Scavenger CMT – 11.5 # 2.76 Y 16.7 MW 235 sks 10 bbls away
14	Sacenger Cement	2/28/2022	07:41	11.5	5	40	448	50 bbls away
15	Sacenger Cement	2/28/2022	07:54	11.5	5	65	390	115 bbls away swap to Lead Cement
16	Lead Cement	2/28/2022	07:55	12.7	6	10	800	263 BBLS Lead CMT – 12.7 # 2.00 Y 11.0 MW 737 sks
17	Lead Cement	2/28/2022	08:03	12.7	6	40	760	50 bbls away
18	Lead Cement	2/28/2022	08:12	12.7	6	50	750	100 bbls away
19	Lead Cement	2/28/2022	08:20	12.7	6	50	727	150 bbls away
20	Lead Cement	2/28/2022	08:28	12.7	6	50	740	200 bbls away
21	Lead Cement	2/28/2022	08:37	12.7	6	50	730	250 bbls away
22	Lead Cement	2/28/2022	08:41	12.7	3	13	217	263 bbls away swap to Tail Cement
23	Tail Cement	2/28/2022	08:42	13.5	6	10	900	285 BBLS Tail CMT – 13.5 # 2.00 Y 9.7 MW 802 sks 10 bbls away
24	Tail Cement	2/28/2022	08:50	13.5	5	40	675	50 bbls away
25	Tail Cement	2/28/2022	09:00	13.5	5	50	780	100 bbls away End parasite air @ 100 away, lost returns @ 120 away
26	Tail Cement	2/28/2022	09:10	13.5	5	50	750	150 bbls away
27	Tail Cement	2/28/2022	09:20	13.5	5	50	720	200 bbls away
28	Tail Cement	2/28/2022	09:32	13.5	5	50	705	250 bbls away
29	Tail Cement	2/28/2022	09:42	13.5	3	35	220	285 bbls away shutdown to washup
30	Washup	2/28/2022	09:43					washup to pit and drop plug
31	Displacement	2/28/2022	09:50	8.34	7	10	520	begin displacement and send plug, 10 bbls away
32	Displacement	2/28/2022	09:58	8.34	7	40	442	50 bbls away
33	Displacement	2/28/2022	10:05	8.34	7	50	1228	100 bbls away
34	Displacement	2/28/2022	10:13	8.34	7	50	1950	150 bbls away
35	Displacement	2/28/2022	10:16	8.34	4	27	2042	187 bbls away, Land Plug
36	Check Floats	2/28/2022	10:20					Check floats, floats held with 2 bbls back

Line	Event	Date (MM/DD/YY)	Time (HH:MM)	Density (lb/gal)	Pump Rate (bpm)	Pump Volume (bbls)	Pipe Pressure (psi)	Comment
37	Safety Meeting	2/28/2022	10:25					Rig down meeting
38	Rig Down	2/28/2022	10:30					Rig down equipment
39	Safety Meeting	2/28/2022	11:30					Journey management meeting
40	Depart Location	2/28/2022	11:45					Crew departs location. Estimate Top of Tail @ 6926 Estimated Top of Lead @ 2166 Estimated Top of Scavenger @ 161 Estimated Mud recoverd 533 BBLs

Pump Diagrams

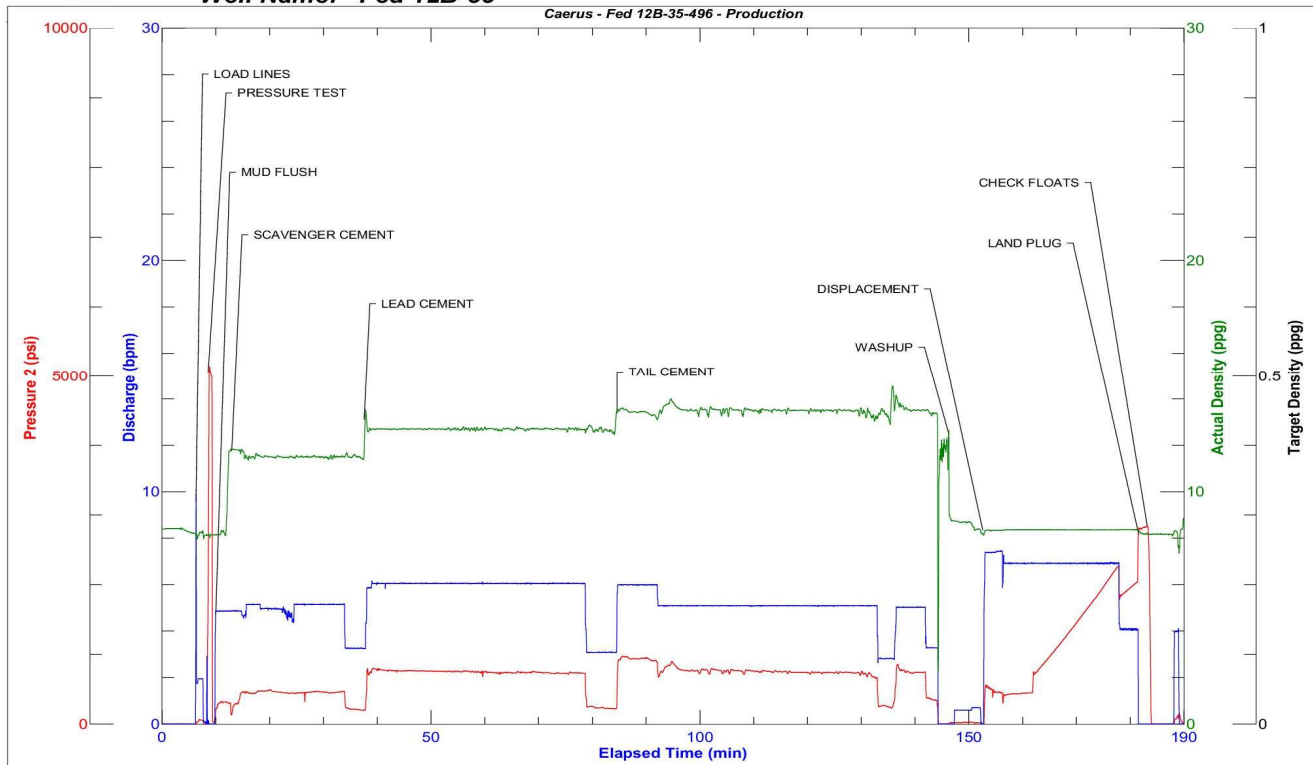


JobMaster Program Version 5.01C1

Job Number: 80356

Customer: Cearus

Well Name: Fed 12B-35



BJ Services

Job Start: Monday, February 28, 2022