

BJU G35 FED 12B-35 496  
Garfield County, CO  
Q220173 & RM-220160  
Design #3

Company Name: Caerus Oil & Gas  
BJU G35 FED 12B-35 496  
Garfield County, CO  
Rig: H&P #330  
Created By: Will Jircik  
Date: 3:49, February 27 2022

WELL DETAILS: BJU G35 FED 12B-35 496

				8164.0		
+N/-S	+E/-W	Northing	Easting	Latitude	Longitude	
0.0	0.0	14415365.20	2447000.80	39.660667	-108.134301	12B-35

PROJECT DETAILS: Garfield County, CO

System Datum: Universal Transverse Mercator (US Survey Feet)  
Datum: NAD 1927 - Western US  
Ellipsoid: Clarke 1866  
Zone: Zone 12N (114 W to 108 W)  
Geodetic System: Mean Sea Level

DESIGN TARGET DETAILS

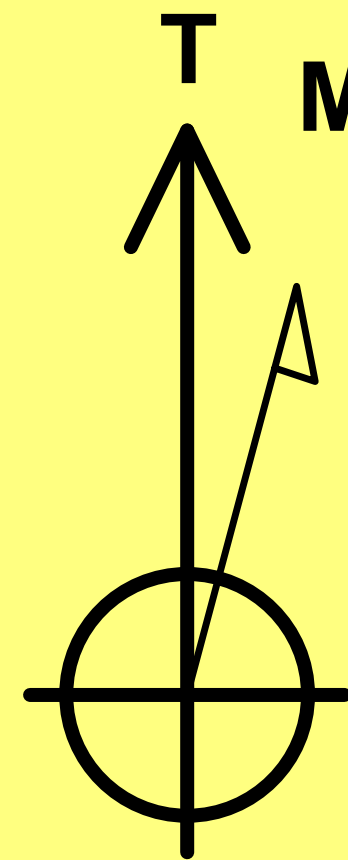
Name	TVD	+N/-S	+E/-W	Northing	Easting	Latitude	Longitude
12B-35 - OHCR	7819.0	558.4	-2808.2	14415833.67	2444176.19	39.662199	-108.144272
12B-35 - PBHL	11607.0	487.6	-2879.3	14415760.60	2444107.40	39.662005	-108.144524

DESIGN ANNOTATIONS

MD	Inc	Azi	TVD	+N/-S	+E/-W	VSect	Departure	Annotation
118.0	1.10	332.03	118.0	1.0	-1.0	1.1	0.0	Build 3° / 100'
148.2	1.00	281.25	148.1	1.3	-1.3	1.6	0.6	EOB @ 1.00° Inc. / 281.25° Azm
350.0	1.00	281.25	350.0	2.0	-4.8	5.1	4.1	Build 3° / 100'
1084.3	23.03	281.23	1063.8	31.6	-153.8	156.9	156.0	EOB @ 23.03° Inc. / 281.23° Azm
7612.7	23.03	281.23	7071.8	528.8	-2658.9	2709.9	2710.0	Drop 3° / 100'
8380.4	0.00	0.00	7819.0	558.4	-2808.2	2862.0	2862.2	EOD @ Vertical / Build 1.5° / 100'
8482.9	1.54	225.10	7921.5	557.5	-2809.2	2862.8	2863.5	EOB @ 1.54° Inc. / 225.10° Azm
12169.7	1.54	225.10	11607.0	487.6	-2879.3	2920.3	2962.5	TD @ 12169.7' MD / 11607.0' TVD

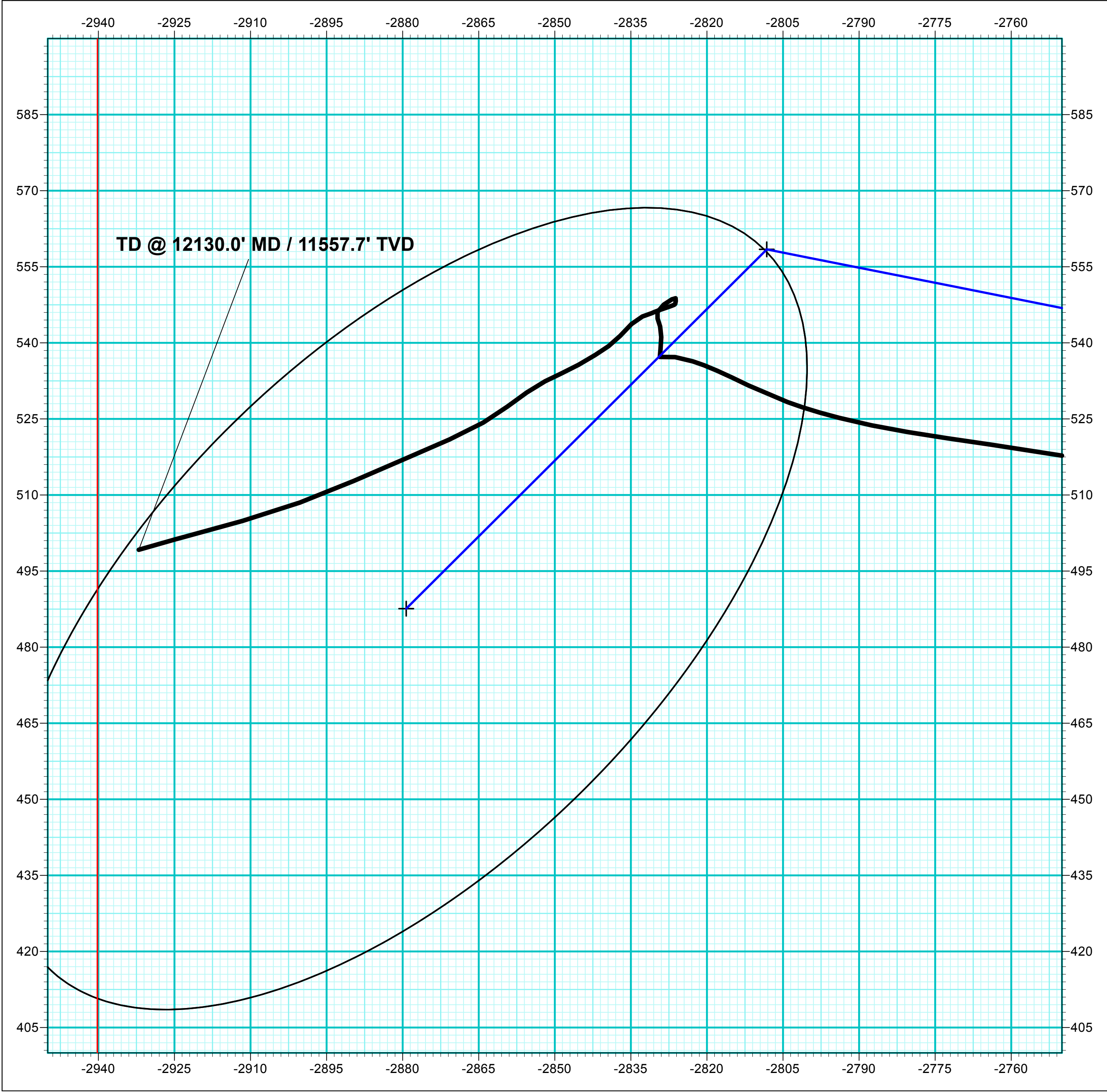
FORMATION TOP DETAILS

TVDPath	MDPath	Formation
2537.0	2685.1	Wasatch
5537.0	5944.9	Wasatch G
5814.0	6245.9	Fort Union
7819.0	8380.4	Ohio Creek / TOG
8065.0	8626.4	Williams Fork
10809.0	11371.4	Cameo
11407.0	11969.6	Rollins



Azimuths to True North  
Magnetic North: 9.25°

Strength: 51110.4nT  
Dip Angle: 65.72°  
Date: 2/17/2022  
Model: HDGM2022

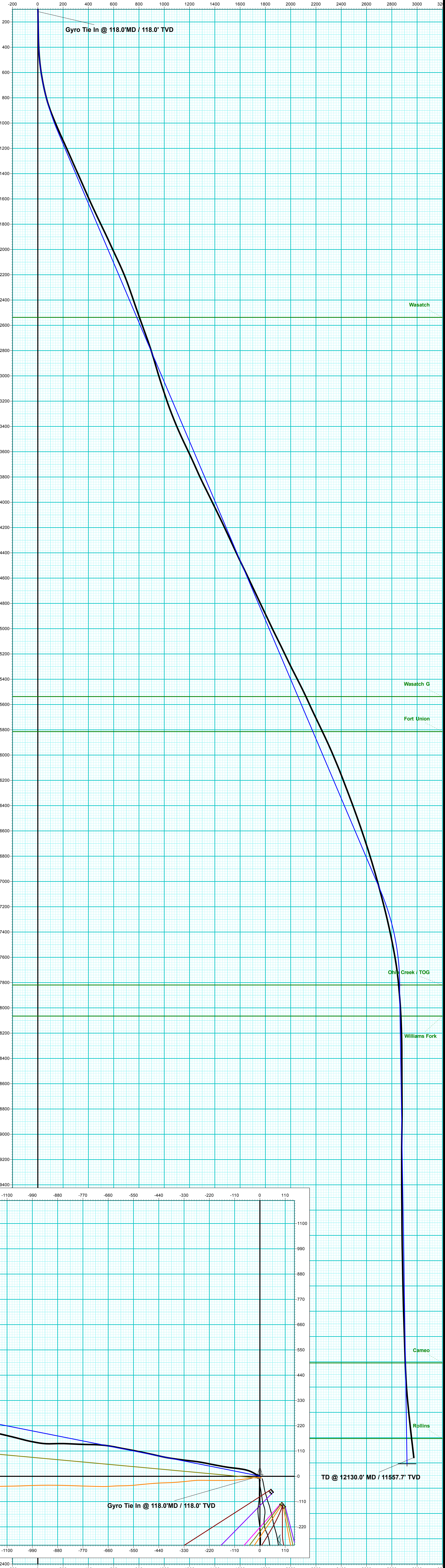
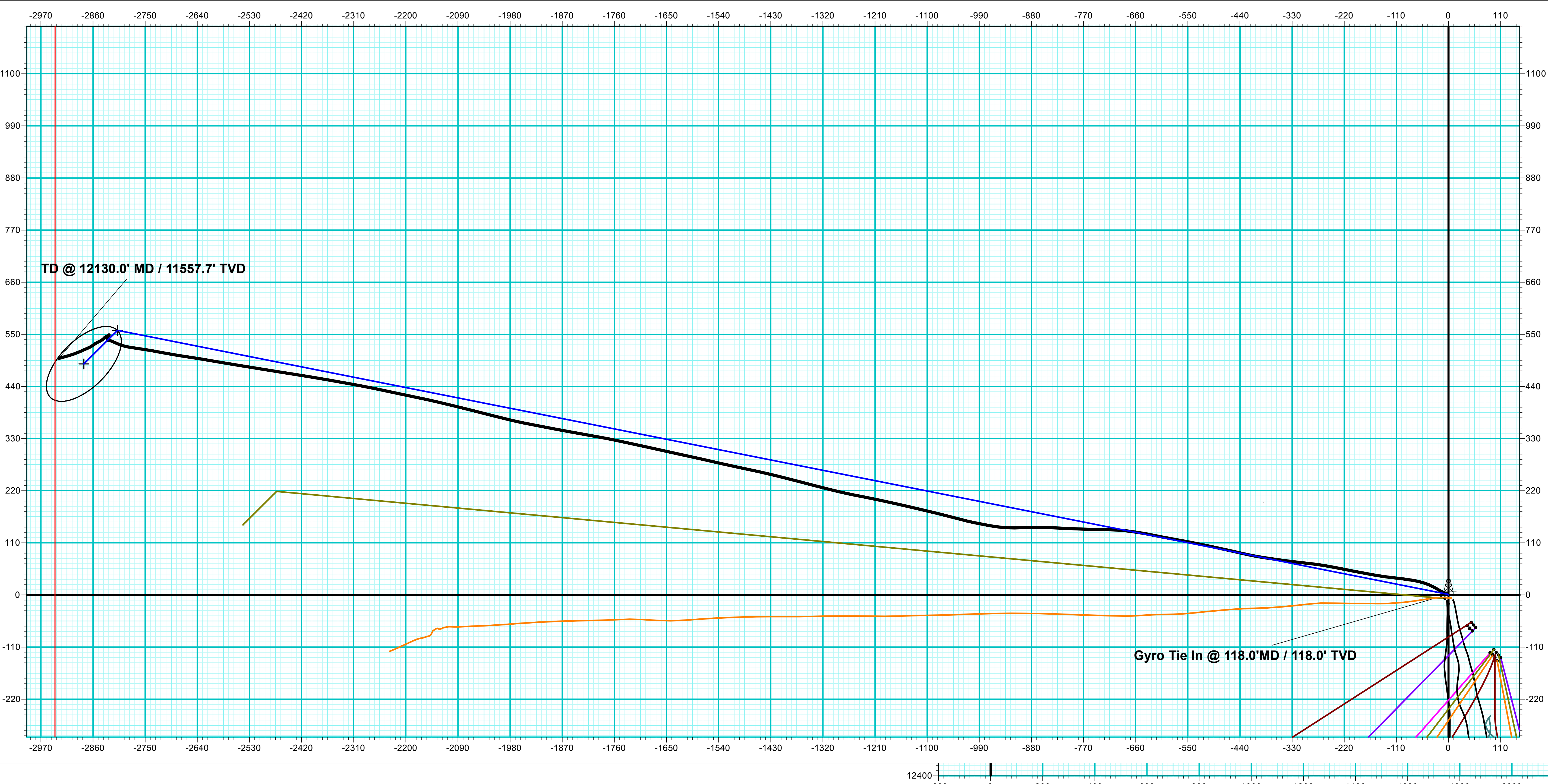


ANNOTATIONS

MD	Inc	Azi	TVD	+N/-S	+E/-W	VSec	Departure	Annotation
118.0	1.10	332.03	118.0	1.0	-1.0	1.1	1.4	Gyro Tie In @ 118.0' MD / 118.0' TVD
12130.0	7.60	254.10	11557.7	499.2	-2932.0	2974.2	3021.8	TD @ 12130.0' MD / 11557.7' TVD

DESIGN ANNOTATIONS

MD	Inc	Azi	TVD	+N/-S	+E/-W	VSec	Departure	Annotation
118.0	1.10	332.03	118.0	1.0	-1.0	1.1	0.0	Build 3° / 100'
148.2	1.00	281.25	148.1	1.3	-1.3	1.6	0.6	EOB @ 1.00° Inc. / 281.25° Azm
350.0	1.00	281.25	350.0	2.0	-4.8	5.1	4.1	Build 3° / 100'
1084.3	23.03	281.23	1063.8	31.6	-153.8	156.9	156.0	EOB @ 23.03° Inc. / 281.23° Azm
7612.7	23.03	281.23	7071.8	528.8	-2658.9	2709.9	2710.0	Drop 3° / 100'
8380.4	0.00	0.00	7819.0	558.4	-2808.2	2862.0	2862.2	EOD @ Vertical / Build 1.5° / 100'
8482.9	1.54	225.10	7921.5	557.5	-2809.2	2862.8	2863.5	EOB @ 1.54° Inc. / 225.10° Azm
12169.7	1.54	225.10	11607.0	487.6	-2879.3	2920.3	2962.5	TD @ 12169.7' MD / 11607.0' TVD







## **Caerus Oil & Gas**

**Garfield County, CO**

**NPM G35 496 Pad**

**BJU G35 FED 12B-35 496 - Slot 12B-35**

**Wellbore #1**

**Design: Wellbore #1**

## **KLX Survey Report**

**27 February, 2022**



<b>Company:</b>	Caerus Oil & Gas	<b>Local Co-ordinate Reference:</b>	Well BJU G35 FED 12B-35 496 - Slot 12B-35
<b>Project:</b>	Garfield County, CO	<b>TVD Reference:</b>	RKB @ 8194.0usft (H&P #330)
<b>Site:</b>	NPM G35 496 Pad	<b>MD Reference:</b>	RKB @ 8194.0usft (H&P #330)
<b>Well:</b>	BJU G35 FED 12B-35 496	<b>North Reference:</b>	True
<b>Wellbore:</b>	Wellbore #1	<b>Survey Calculation Method:</b>	Minimum Curvature
<b>Design:</b>	Wellbore #1	<b>Database:</b>	EDM 5000.1 Single User Db

<b>Project</b>	Garfield County, CO		
<b>Map System:</b>	Universal Transverse Mercator (US Survey Feet)	<b>System Datum:</b>	Mean Sea Level
<b>Geo Datum:</b>	NAD 1927 - Western US		
<b>Map Zone:</b>	Zone 12N (114 W to 108 W)		

Site		NPM G35 496 Pad						
Site Position:		Northing:	14,415,365.20	usft	Latitude:	39.660667		
From:	Map	Easting:	2,447,000.80	usft	Longitude:	-108.134301		
Position Uncertainty:	0.0	usft	Slot Radius:	13-3/16	"	Grid Convergence:	1.83	°

Well	BJU G35 FED 12B-35 496 - Slot 12B-35					
Well Position	+N/-S	0.0 usft	Northing:	14,415,365.20 usft	Latitude:	39.660667
	+E/-W	0.0 usft	Easting:	2,447,000.80 usft	Longitude:	-108.134301
Position Uncertainty		0.0 usft	Wellhead Elevation:	usft	Ground Level:	8,164.0 usft

<b>Wellbore</b>	Wellbore #1				
<b>Magnetics</b>	<b>Model Name</b>	<b>Sample Date</b>	<b>Declination (°)</b>	<b>Dip Angle (°)</b>	<b>Field Strength (nT)</b>
	HDGM2022	2/17/2022	9.25	65.72	51,110.40000000

<b>Design</b>	Wellbore #1				
<b>Audit Notes:</b>					
<b>Version:</b>	1.0	<b>Phase:</b>	ACTUAL	<b>Tie On Depth:</b>	0.0
<b>Vertical Section:</b>	<b>Depth From (TVD) (usft)</b>	<b>+N/-S (usft)</b>	<b>+E/-W (usft)</b>	<b>Direction (°)</b>	
	0.0	0.0	0.0	279.66	

<b>Survey Program</b>	<b>Date</b>	2/27/2022			
<b>From (usft)</b>	<b>To (usft)</b>	<b>Survey (Wellbore)</b>	<b>Tool Name</b>	<b>Description</b>	
30.0	118.0	Sfc Gyro (Wellbore #1)	GYRO-NS	OWSG Gyrocompass Gyro	
285.0	12,130.0	KLX MWD (Wellbore #1)	MWD	OWSG MWD - Standard	

<b>Survey</b>										
<b>Measured Depth (usft)</b>	<b>Inclination (°)</b>	<b>Azimuth (°)</b>	<b>Vertical Depth (usft)</b>	<b>+N/-S (usft)</b>	<b>+E/-W (usft)</b>	<b>Vertical Section (usft)</b>	<b>Dogleg Rate (°/100usft)</b>	<b>Build Rate (°/100usft)</b>	<b>Turn Rate (°/100usft)</b>	
0.0	0.00	0.00	0.0	0.0	0.0	0.0	0.00	0.00	0.00	
30.0	0.00	0.00	30.0	0.0	0.0	0.0	0.00	0.00	0.00	
60.0	1.04	305.12	60.0	0.2	-0.2	0.2	3.47	3.47	0.00	
90.0	1.21	321.37	90.0	0.6	-0.6	0.7	1.20	0.57	54.17	
<b>Gyro Tie In @ 118.0' MD / 118.0' TVD</b>										
118.0	1.10	332.03	118.0	1.0	-1.0	1.1	0.86	-0.39	38.07	
285.0	1.10	268.10	285.0	2.4	-3.3	3.7	0.70	0.00	-38.28	
332.0	1.40	272.80	332.0	2.4	-4.3	4.7	0.67	0.64	10.00	
422.0	3.40	299.00	421.9	3.8	-7.8	8.3	2.48	2.22	29.11	
513.0	5.90	297.10	512.6	7.2	-14.3	15.3	2.75	2.75	-2.09	

<b>Company:</b>	Caerus Oil & Gas	<b>Local Co-ordinate Reference:</b>	Well BJU G35 FED 12B-35 496 - Slot 12B-35
<b>Project:</b>	Garfield County, CO	<b>TVD Reference:</b>	RKB @ 8194.0usft (H&P #330)
<b>Site:</b>	NPM G35 496 Pad	<b>MD Reference:</b>	RKB @ 8194.0usft (H&P #330)
<b>Well:</b>	BJU G35 FED 12B-35 496	<b>North Reference:</b>	True
<b>Wellbore:</b>	Wellbore #1	<b>Survey Calculation Method:</b>	Minimum Curvature
<b>Design:</b>	Wellbore #1	<b>Database:</b>	EDM 5000.1 Single User Db

Survey									
Measured Depth (usft)	Inclination (°)	Azimuth (°)	Vertical Depth (usft)	+N/-S (usft)	+E/-W (usft)	Vertical Section (usft)	Dogleg Rate (°/100usft)	Build Rate (°/100usft)	Turn Rate (°/100usft)
608.0	9.60	300.10	606.7	13.4	-25.5	27.4	3.92	3.89	3.16
702.0	11.80	293.80	699.0	21.2	-41.1	44.0	2.65	2.34	-6.70
797.0	14.40	283.70	791.6	27.9	-61.4	65.3	3.64	2.74	-10.63
891.0	19.40	277.80	881.5	32.8	-88.3	92.5	5.62	5.32	-6.28
986.0	22.80	276.40	970.1	37.0	-122.2	126.7	3.62	3.58	-1.47
1,080.0	23.90	280.30	1,056.4	42.4	-159.1	163.9	2.02	1.17	4.15
1,175.0	24.00	281.00	1,143.2	49.6	-197.0	202.5	0.32	0.11	0.74
1,270.0	24.00	281.30	1,230.0	57.0	-234.9	241.1	0.13	0.00	0.32
1,364.0	23.60	278.50	1,316.0	63.6	-272.2	279.0	1.28	-0.43	-2.98
1,459.0	24.50	275.60	1,402.8	68.3	-310.6	317.7	1.56	0.95	-3.05
1,553.0	23.50	278.20	1,488.7	72.9	-348.6	355.9	1.55	-1.06	2.77
1,648.0	23.70	278.20	1,575.7	78.3	-386.2	393.9	0.21	0.21	0.00
1,742.0	25.00	282.50	1,661.4	85.3	-424.3	432.6	2.34	1.38	4.57
1,837.0	25.40	282.90	1,747.3	94.2	-463.8	473.0	0.46	0.42	0.42
1,931.0	26.10	281.80	1,832.0	102.9	-503.7	513.8	0.90	0.74	-1.17
2,026.0	24.60	281.00	1,917.8	111.0	-543.5	554.5	1.62	-1.58	-0.84
2,120.0	24.70	280.20	2,003.3	118.2	-582.1	593.7	0.37	0.11	-0.85
2,215.0	25.60	281.50	2,089.3	125.8	-621.7	634.0	1.11	0.95	1.37
2,309.0	22.90	278.70	2,175.0	132.6	-659.7	672.6	3.12	-2.87	-2.98
2,404.0	20.80	274.00	2,263.1	136.6	-694.8	707.9	2.88	-2.21	-4.95
2,498.0	18.60	270.90	2,351.6	138.0	-726.5	739.3	2.59	-2.34	-3.30
2,593.0	19.60	271.20	2,441.4	138.5	-757.5	770.0	1.06	1.05	0.32
2,687.0	19.60	272.80	2,530.0	139.6	-789.1	801.3	0.57	0.00	1.70
2,782.0	20.20	272.50	2,619.3	141.1	-821.4	833.4	0.64	0.63	-0.32
2,876.0	19.90	272.00	2,707.6	142.4	-853.6	865.3	0.37	-0.32	-0.53
2,951.0	18.40	267.80	2,778.4	142.4	-878.1	889.6	2.71	-2.00	-5.60
3,077.0	16.30	269.50	2,898.7	141.5	-915.7	926.5	1.71	-1.67	1.35
3,172.0	17.10	275.60	2,989.7	142.7	-942.9	953.5	2.03	0.84	6.42
3,266.0	17.80	280.60	3,079.4	146.7	-970.8	981.7	1.76	0.74	5.32
3,361.0	18.70	281.70	3,169.6	152.5	-1,000.0	1,011.4	1.01	0.95	1.16
3,455.0	20.30	284.80	3,258.2	159.7	-1,030.5	1,042.7	2.03	1.70	3.30
3,550.0	22.20	284.40	3,346.7	168.4	-1,063.8	1,077.0	2.01	2.00	-0.42
3,645.0	23.70	282.90	3,434.2	177.1	-1,099.8	1,114.0	1.69	1.58	-1.58
3,739.0	25.20	283.60	3,519.8	186.0	-1,137.7	1,152.8	1.63	1.60	0.74
3,834.0	25.80	282.40	3,605.5	195.2	-1,177.6	1,193.6	0.83	0.63	-1.26
3,929.0	24.20	280.80	3,691.6	203.3	-1,216.9	1,233.7	1.83	-1.68	-1.68
4,023.0	24.10	281.80	3,777.4	210.8	-1,254.6	1,272.2	0.45	-0.11	1.06
4,118.0	26.50	283.60	3,863.3	219.8	-1,294.2	1,312.7	2.65	2.53	1.89
4,213.0	26.50	284.60	3,948.3	230.1	-1,335.3	1,355.0	0.47	0.00	1.05
4,307.0	26.00	284.60	4,032.6	240.6	-1,375.5	1,396.4	0.53	-0.53	0.00
4,402.0	26.00	284.00	4,118.0	250.9	-1,415.9	1,437.9	0.28	0.00	-0.63
4,496.0	24.90	282.50	4,202.9	260.2	-1,455.2	1,478.2	1.36	-1.17	-1.60
4,591.0	25.00	281.50	4,289.0	268.5	-1,494.4	1,518.2	0.46	0.11	-1.05

<b>Company:</b>	Caerus Oil & Gas	<b>Local Co-ordinate Reference:</b>	Well BJU G35 FED 12B-35 496 - Slot 12B-35
<b>Project:</b>	Garfield County, CO	<b>TVD Reference:</b>	RKB @ 8194.0usft (H&P #330)
<b>Site:</b>	NPM G35 496 Pad	<b>MD Reference:</b>	RKB @ 8194.0usft (H&P #330)
<b>Well:</b>	BJU G35 FED 12B-35 496	<b>North Reference:</b>	True
<b>Wellbore:</b>	Wellbore #1	<b>Survey Calculation Method:</b>	Minimum Curvature
<b>Design:</b>	Wellbore #1	<b>Database:</b>	EDM 5000.1 Single User Db

Survey									
Measured Depth (usft)	Inclination (°)	Azimuth (°)	Vertical Depth (usft)	+N/-S (usft)	+E/-W (usft)	Vertical Section (usft)	Dogleg Rate (°/100usft)	Build Rate (°/100usft)	Turn Rate (°/100usft)
4,686.0	24.90	283.20	4,375.1	277.1	-1,533.5	1,558.3	0.76	-0.11	1.79
4,780.0	25.60	282.70	4,460.2	286.0	-1,572.6	1,598.3	0.78	0.74	-0.53
4,875.0	25.80	282.40	4,545.8	295.0	-1,612.8	1,639.4	0.25	0.21	-0.32
4,969.0	25.50	282.10	4,630.5	303.6	-1,652.6	1,680.1	0.35	-0.32	-0.32
5,064.0	25.20	282.60	4,716.4	312.3	-1,692.3	1,720.7	0.39	-0.32	0.53
5,159.0	25.10	282.40	4,802.4	321.1	-1,731.7	1,761.1	0.14	-0.11	-0.21
5,254.0	25.80	281.00	4,888.1	329.3	-1,771.7	1,801.8	0.97	0.74	-1.47
5,348.0	25.20	280.00	4,973.0	336.7	-1,811.5	1,842.3	0.79	-0.64	-1.06
5,443.0	26.50	280.20	5,058.5	344.0	-1,852.3	1,883.7	1.37	1.37	0.21
5,538.0	26.20	281.00	5,143.6	351.7	-1,893.7	1,925.9	0.49	-0.32	0.84
5,632.0	25.40	280.80	5,228.2	359.5	-1,933.9	1,966.8	0.86	-0.85	-0.21
5,726.0	26.90	283.00	5,312.6	368.0	-1,974.4	2,008.2	1.90	1.60	2.34
5,821.0	27.20	284.40	5,397.2	378.3	-2,016.4	2,051.3	0.74	0.32	1.47
5,915.0	26.30	284.30	5,481.2	388.7	-2,057.4	2,093.4	0.96	-0.96	-0.11
6,010.0	24.90	283.80	5,566.8	398.7	-2,097.2	2,134.4	1.49	-1.47	-0.53
6,105.0	24.70	282.90	5,653.1	407.9	-2,136.0	2,174.1	0.45	-0.21	-0.95
6,199.0	25.90	281.80	5,738.0	416.5	-2,175.2	2,214.3	1.37	1.28	-1.17
6,294.0	25.60	281.80	5,823.6	424.9	-2,215.6	2,255.5	0.32	-0.32	0.00
6,389.0	24.40	282.20	5,909.7	433.3	-2,254.9	2,295.6	1.28	-1.26	0.42
6,483.0	23.20	280.50	5,995.7	440.8	-2,292.1	2,333.5	1.47	-1.28	-1.81
6,578.0	22.50	280.30	6,083.3	447.4	-2,328.3	2,370.4	0.74	-0.74	-0.21
6,672.0	20.80	280.00	6,170.6	453.5	-2,362.5	2,405.1	1.81	-1.81	-0.32
6,767.0	20.90	279.50	6,259.4	459.3	-2,395.8	2,438.9	0.21	0.11	-0.53
6,862.0	20.70	279.10	6,348.2	464.7	-2,429.1	2,472.6	0.26	-0.21	-0.42
6,956.0	20.10	279.00	6,436.3	469.9	-2,461.5	2,505.4	0.64	-0.64	-0.11
7,051.0	19.30	279.30	6,525.8	475.0	-2,493.1	2,537.4	0.85	-0.84	0.32
7,145.0	18.60	278.80	6,614.7	479.8	-2,523.2	2,567.9	0.76	-0.74	-0.53
7,240.0	18.00	279.20	6,704.9	484.4	-2,552.7	2,597.8	0.65	-0.63	0.42
7,334.0	17.20	280.20	6,794.5	489.2	-2,580.7	2,626.2	0.91	-0.85	1.06
7,429.0	16.40	279.50	6,885.4	493.9	-2,607.7	2,653.6	0.87	-0.84	-0.74
7,523.0	15.70	279.50	6,975.7	498.2	-2,633.4	2,679.6	0.74	-0.74	0.00
7,618.0	14.90	278.10	7,067.4	502.0	-2,658.1	2,704.7	0.93	-0.84	-1.47
7,713.0	14.40	279.50	7,159.3	505.7	-2,681.9	2,728.7	0.64	-0.53	1.47
7,807.0	13.90	280.20	7,250.4	509.6	-2,704.5	2,751.7	0.56	-0.53	0.74
7,902.0	12.70	280.70	7,342.9	513.6	-2,726.0	2,773.6	1.27	-1.26	0.53
7,996.0	11.60	279.50	7,434.8	517.1	-2,745.5	2,793.3	1.20	-1.17	-1.28
8,091.0	11.10	278.00	7,527.9	519.9	-2,764.0	2,812.0	0.61	-0.53	-1.58
8,185.0	9.20	279.30	7,620.4	522.4	-2,780.3	2,828.6	2.04	-2.02	1.38
8,280.0	7.60	284.50	7,714.4	525.2	-2,793.9	2,842.4	1.86	-1.68	5.47
8,374.0	5.40	290.60	7,807.8	528.3	-2,804.1	2,853.0	2.45	-2.34	6.49
8,469.0	4.70	295.80	7,902.4	531.6	-2,811.8	2,861.1	0.88	-0.74	5.47
8,563.0	3.70	294.20	7,996.2	534.5	-2,818.0	2,867.7	1.07	-1.06	-1.70
8,658.0	2.50	286.70	8,091.0	536.4	-2,822.8	2,872.8	1.33	-1.26	-7.89

<b>Company:</b>	Caerus Oil & Gas	<b>Local Co-ordinate Reference:</b>	Well BJU G35 FED 12B-35 496 - Slot 12B-35
<b>Project:</b>	Garfield County, CO	<b>TVD Reference:</b>	RKB @ 8194.0usft (H&P #330)
<b>Site:</b>	NPM G35 496 Pad	<b>MD Reference:</b>	RKB @ 8194.0usft (H&P #330)
<b>Well:</b>	BJU G35 FED 12B-35 496	<b>North Reference:</b>	True
<b>Wellbore:</b>	Wellbore #1	<b>Survey Calculation Method:</b>	Minimum Curvature
<b>Design:</b>	Wellbore #1	<b>Database:</b>	EDM 5000.1 Single User Db

Survey									
Measured Depth (usft)	Inclination (°)	Azimuth (°)	Vertical Depth (usft)	+N/-S (usft)	+E/-W (usft)	Vertical Section (usft)	Dogleg Rate (°/100usft)	Build Rate (°/100usft)	Turn Rate (°/100usft)
8,752.0	1.90	279.30	8,185.0	537.2	-2,826.3	2,876.4	0.70	-0.64	-7.87
8,847.0	0.90	251.60	8,279.9	537.2	-2,828.6	2,878.6	1.24	-1.05	-29.16
8,939.0	0.30	347.60	8,371.9	537.2	-2,829.3	2,879.3	1.06	-0.65	104.35
9,036.0	1.50	7.80	8,468.9	538.7	-2,829.2	2,879.5	1.26	1.24	20.82
9,131.0	1.40	359.40	8,563.9	541.1	-2,829.0	2,879.7	0.25	-0.11	-8.84
9,225.0	1.20	347.50	8,657.9	543.2	-2,829.2	2,880.3	0.36	-0.21	-12.66
9,320.0	0.80	334.70	8,752.9	544.8	-2,829.7	2,881.0	0.48	-0.42	-13.47
9,414.0	0.90	20.80	8,846.9	546.1	-2,829.8	2,881.3	0.71	0.11	49.04
9,509.0	1.50	52.50	8,941.8	547.5	-2,828.5	2,880.3	0.92	0.63	33.37
9,604.0	0.80	64.40	9,036.8	548.6	-2,826.9	2,878.9	0.77	-0.74	12.53
9,698.0	0.20	115.80	9,130.8	548.8	-2,826.2	2,878.2	0.74	-0.64	54.68
9,793.0	0.60	193.20	9,225.8	548.2	-2,826.1	2,878.1	0.62	0.42	81.47
9,887.0	0.10	175.00	9,319.8	547.7	-2,826.3	2,878.1	0.54	-0.53	-19.36
9,982.0	0.30	247.00	9,414.8	547.5	-2,826.5	2,878.3	0.30	0.21	75.79
10,076.0	0.80	249.00	9,508.8	547.2	-2,827.3	2,879.0	0.53	0.53	2.13
10,171.0	0.40	257.00	9,603.8	546.9	-2,828.3	2,879.9	0.43	-0.42	8.42
10,265.0	0.20	244.30	9,697.8	546.7	-2,828.7	2,880.4	0.22	-0.21	-13.51
10,360.0	0.80	249.00	9,792.8	546.4	-2,829.5	2,881.1	0.63	0.63	4.95
10,454.0	1.00	248.80	9,886.8	545.9	-2,830.9	2,882.3	0.21	0.21	-0.21
10,549.0	1.40	251.30	9,981.8	545.2	-2,832.7	2,884.1	0.42	0.42	2.63
10,643.0	1.90	223.20	10,075.7	543.7	-2,834.9	2,885.9	1.00	0.53	-29.89
10,738.0	2.00	224.00	10,170.7	541.4	-2,837.1	2,887.7	0.11	0.11	0.84
10,832.0	1.70	233.90	10,264.6	539.4	-2,839.4	2,889.6	0.47	-0.32	10.53
10,927.0	2.10	238.90	10,359.6	537.6	-2,842.0	2,891.9	0.46	0.42	5.26
11,022.0	2.50	239.80	10,454.5	535.7	-2,845.3	2,894.8	0.42	0.42	0.95
11,116.0	2.10	247.40	10,548.4	534.0	-2,848.7	2,897.9	0.53	-0.43	8.09
11,210.0	2.30	241.30	10,642.3	532.4	-2,851.9	2,900.8	0.33	0.21	-6.49
11,305.0	2.80	236.60	10,737.2	530.2	-2,855.5	2,904.0	0.57	0.53	-4.95
11,399.0	3.00	231.50	10,831.1	527.4	-2,859.4	2,907.3	0.35	0.21	-5.43
11,494.0	3.90	240.30	10,926.0	524.3	-2,864.1	2,911.5	1.10	0.95	9.26
11,589.0	5.10	245.70	11,020.7	520.9	-2,870.8	2,917.5	1.34	1.26	5.68
11,684.0	6.50	247.20	11,115.2	517.1	-2,879.6	2,925.5	1.48	1.47	1.58
11,778.0	6.90	246.10	11,208.5	512.8	-2,889.6	2,934.7	0.45	0.43	-1.17
11,872.0	7.10	250.20	11,301.8	508.5	-2,900.3	2,944.5	0.57	0.21	4.36
11,967.0	7.30	254.20	11,396.1	504.9	-2,911.6	2,955.0	0.57	0.21	4.21
12,061.0	7.50	255.10	11,489.3	501.7	-2,923.3	2,966.0	0.25	0.21	0.96
12,072.0	7.60	254.10	11,500.2	501.3	-2,924.7	2,967.3	1.50	0.91	-9.09
<b>TD @ 12130.0' MD / 11557.7' TVD</b>									
12,130.0	7.60	254.10	11,557.7	499.2	-2,932.0	2,974.2	0.00	0.00	0.00



<b>Company:</b>	Caerus Oil & Gas	<b>Local Co-ordinate Reference:</b>	Well BJU G35 FED 12B-35 496 - Slot 12B-35
<b>Project:</b>	Garfield County, CO	<b>TVD Reference:</b>	RKB @ 8194.0usft (H&P #330)
<b>Site:</b>	NPM G35 496 Pad	<b>MD Reference:</b>	RKB @ 8194.0usft (H&P #330)
<b>Well:</b>	BJU G35 FED 12B-35 496	<b>North Reference:</b>	True
<b>Wellbore:</b>	Wellbore #1	<b>Survey Calculation Method:</b>	Minimum Curvature
<b>Design:</b>	Wellbore #1	<b>Database:</b>	EDM 5000.1 Single User Db

Design Annotations				
Measured Depth (usft)	Vertical Depth (usft)	Local Coordinates		Comment
		+N/-S (usft)	+E/-W (usft)	
118.0	118.0	1.0	-1.0	Gyro Tie In @ 118.0'MD / 118.0' TVD
12,130.0	11,557.7	499.2	-2,932.0	TD @ 12130.0' MD / 11557.7' TVD

Checked By: _____	Approved By: _____	Date: _____
-------------------	--------------------	-------------