

BJU G35 FED 23C-35 496
 Garfield County, CO
 Q220089 & RM-220087
 Design #3

Company Name: Caerus Oil & Gas
 BJU G35 FED 23C-35 496
 Garfield County, CO
 Rig: H&P#329
 Created By: Will Jircik
 Date: 3:13, January 29 2022

WELL DETAILS: BJU G35 FED 23C-35 496

+N/-S	+E/-W	Northing	Easting	Latitude	Longitude
0.0	0.0	14415347.40	2447003.30	39.660618	-108.134294 23C-35

PROJECT DETAILS: Garfield County, CO

System Datum: Universal Transverse Mercator (US Survey Feet)
 Datum: NAD 1927 - Western US
 Ellipsoid: Clarke 1866
 Zone: Zone 12N (114 W to 108 W)
 Geodetic System: Mean Sea Level

DESIGN TARGET DETAILS

Name	TVD	+N/-S	+E/-W	Northing	Easting	Latitude	Longitude
23C-35 - OHCR	7881.0	-1037.8		108.514414313.60	2447144.87	39.657770	-108.133909
23C-35 - PBHL	11653.0	-1108.3		37.614414240.90	2447076.30	39.657576	-108.134161

DESIGN ANNOTATIONS

MD	Inc	Azi	TVD	+N/-S	+E/-W	VSect	Departure	Annotation
118.0	0.59	270.36	118.0	-0.6	-1.0	0.6	0.0	Conductor Tie in
178.8	1.00	173.96	178.8	-1.1	-1.3	1.1	0.8	EOB @ 1.00' Inc. / 173.97° Azm
200.0	1.00	173.96	200.0	-1.5	-1.3	1.5	1.2	Build 2' / 100'
432.2	7.97	173.96	431.4	-19.5	0.7	19.5	19.4	EOB @ 7.97' Inc. / 173.96° Azm
7687.2	7.97	173.96	7616.3	-1019.5	106.5	1022.5	1024.9	Drop 3' / 100'
7952.7	0.00	0.00	7881.0	-1037.8	108.5	1040.9	1043.3	EOD @ Vertical / Build 1.5' / 100'
8055.3	1.54	225.15	7983.6	-1038.8	107.5	1041.8	1044.7	EOB @ 1.54' Inc. / 225.15° Azm
11726.1	1.54	225.15	11653.0	-1108.3	37.6	1108.9	1143.2	TD @ 11726.1' MD / 11653.0' TVD

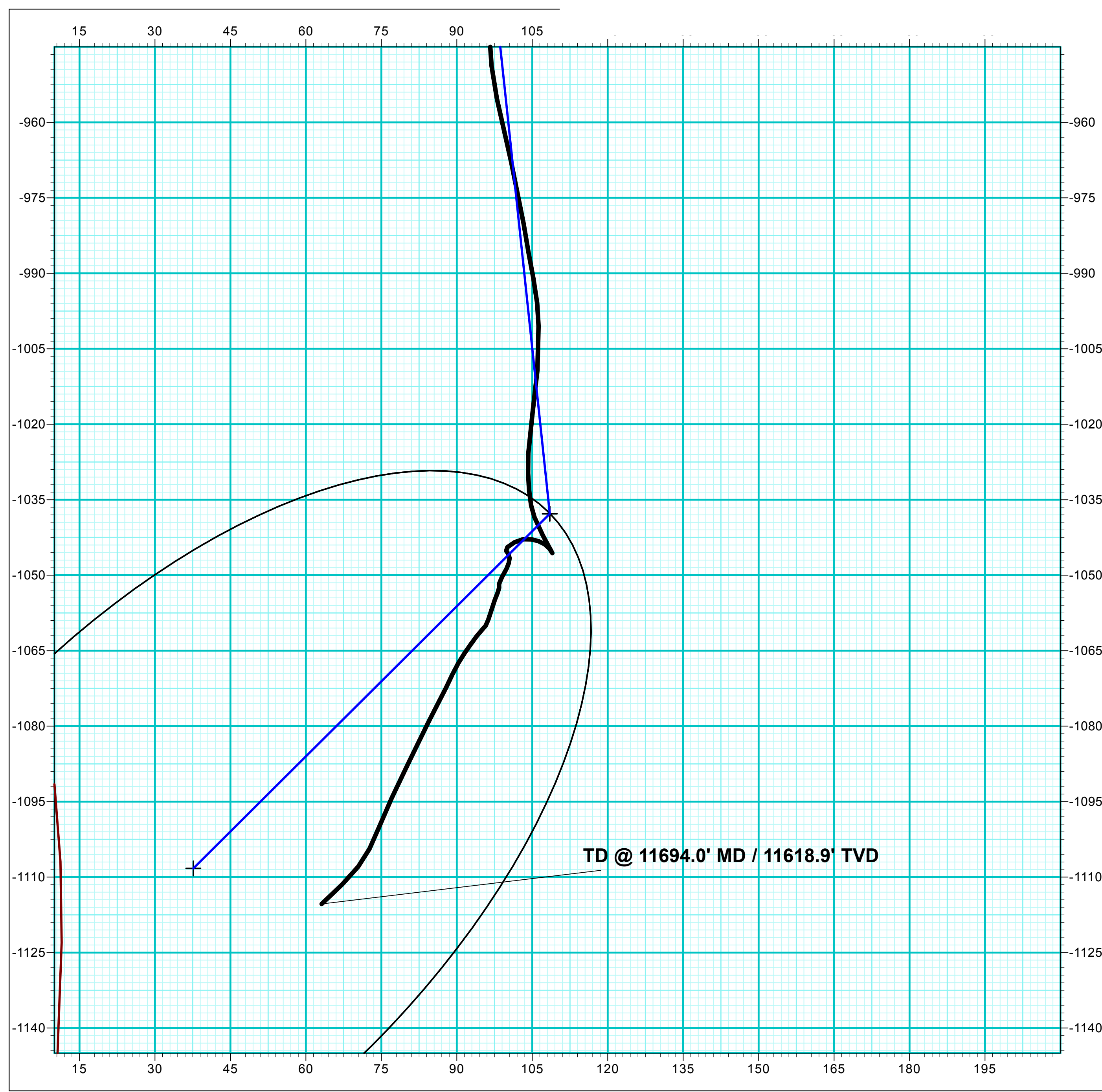
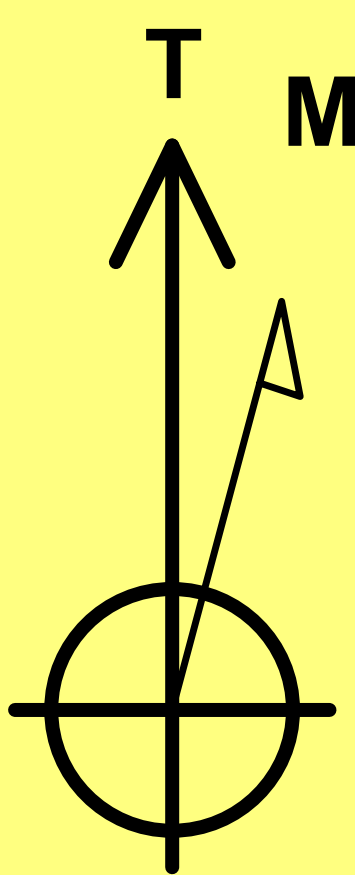
FORMATION TOP DETAILS

TVDPath	MDPath	Formation
2541.0	2562.4	Wasatch
5541.0	5591.7	Wasatch G
5804.0	5857.2	Fort Union
7881.0	7952.7	Ohio Creek
7881.0	7952.7	TOG
8123.0	8194.8	Williams Fork
10877.0	10949.8	Cameo
11453.0	11526.0	Rollins



Azimuths to True North
 Magnetic North: 9.25°

Strength: 51118.0nT
 Dip Angle: 65.72°
 Date: 1/20/2022
 Model: HDGM2022

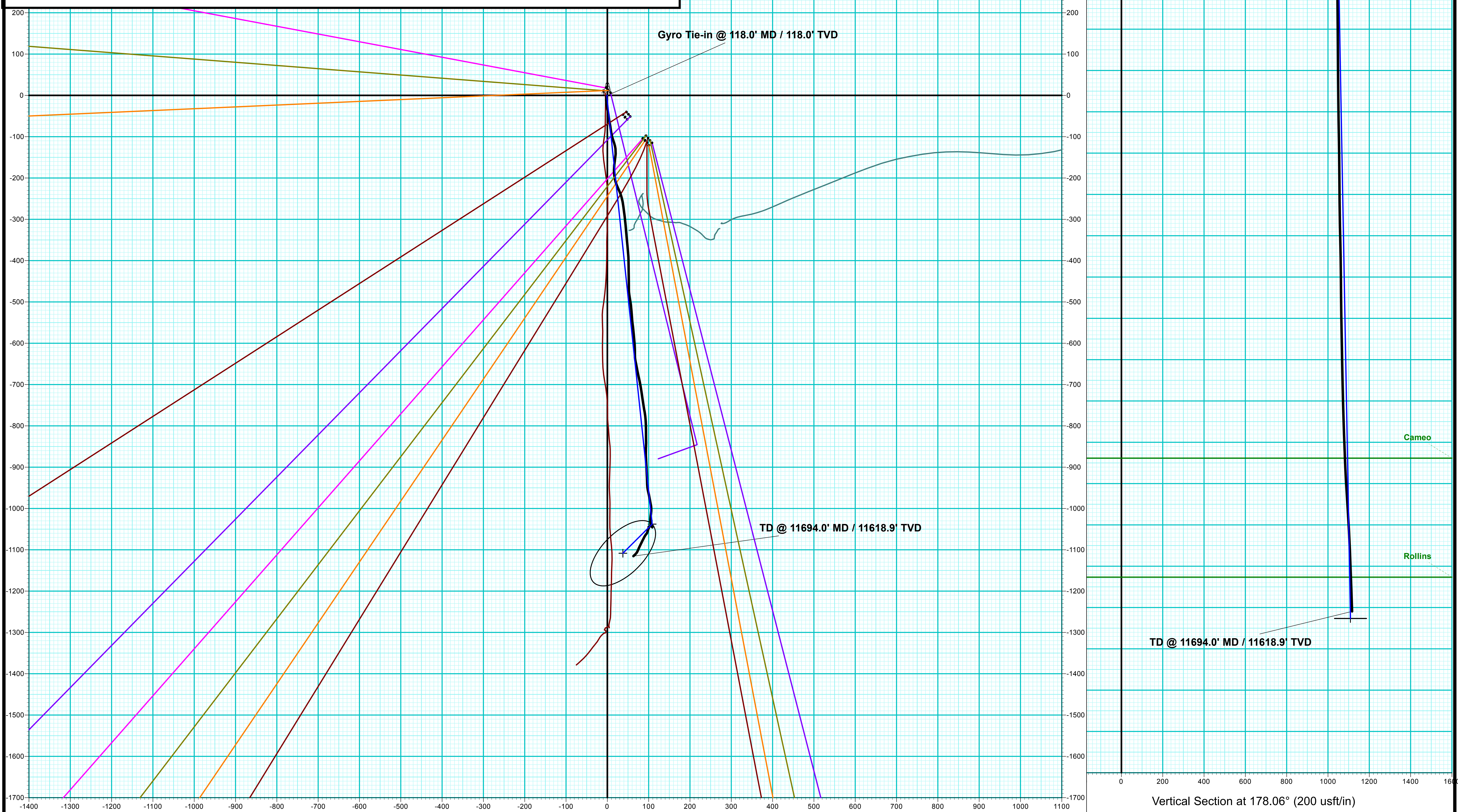


ANNOTATIONS

MD	Inc	Azi	TVD	+N/-S	+E/-W	VSect	Departure	Annotation
118.0	0.59	270.36	118.0	-0.6	-1.0	0.5	1.2	Gyro Tie-in @ 118.0' MD / 118.0' TVD
11694.0	3.00	226.60	11618.9	-1115.3	63.1	1117.1	1153.3	TD @ 11694.0' MD / 11618.9' TVD

DESIGN ANNOTATIONS

MD	Inc	Azi	TVD	+N/-S	+E/-W	VSect	Departure	Annotation
118.0	0.59	270.36	118.0	-0.6	-1.0	0.6	0.0	Conductor Tie in
178.8	1.00	173.96	178.8	-1.1	-1.3	1.1	0.8	EOB @ 1.00' Inc. / 173.97° Azm
200.0	1.00	173.96	200.0	-1.5	-1.3	1.5	1.2	Build 2' / 100'
432.2	7.97	173.96	431.4	-19.5	0.7	19.5	19.4	EOB @ 7.97' Inc. / 173.96° Azm
7687.2	7.97	173.96	7616.3	-1019.5	106.5	1022.5	1024.9	Drop 3' / 100'
7952.7	0.00	0.00	7881.0	-1037.8	108.5	1040.9	1043.3	EOD @ Vertical / Build 1.5' / 100'
8055.3	1.54	225.15	7983.6	-1038.8	107.5	1041.8	1044.7	EOB @ 1.54' Inc. / 225.15° Azm
11726.1	1.54	225.15	11653.0	-1108.3	37.6	1108.9	1143.2	TD @ 11726.1' MD / 11653.0' TVD



Vertical Section at 178.06° (200 usft/in)



Caerus Oil & Gas

Garfield County, CO

NPM G35 496 Pad

BJU G35 FED 23C-35 496 - Slot 23C-35

Wellbore #1

Design: Wellbore #1

KLX Survey Report

29 January, 2022



Company:	Caerus Oil & Gas	Local Co-ordinate Reference:	Well BJU G35 FED 23C-35 496 - Slot 23C-35
Project:	Garfield County, CO	TVD Reference:	RKB @ 8194.0usft (H&P#329)
Site:	NPM G35 496 Pad	MD Reference:	RKB @ 8194.0usft (H&P#329)
Well:	BJU G35 FED 23C-35 496	North Reference:	True
Wellbore:	Wellbore #1	Survey Calculation Method:	Minimum Curvature
Design:	Wellbore #1	Database:	EDM 5000.1 Single User Db

Project	Garfield County, CO		
Map System:	Universal Transverse Mercator (US Survey Feet)	System Datum:	Mean Sea Level
Geo Datum:	NAD 1927 - Western US		
Map Zone:	Zone 12N (114 W to 108 W)		

Site	NPM G35 496 Pad				
Site Position:		Northing:	14,415,365.20 usft	Latitude:	39.660667
From:	Map	Easting:	2,447,000.80 usft	Longitude:	-108.134301
Position Uncertainty:	0.0 usft	Slot Radius:	13-3/16 "	Grid Convergence:	1.83 °

Well	BJU G35 FED 23C-35 496 - Slot 23C-35					
Well Position	+N/-S	0.0 usft	Northing:	14,415,347.40 usft	Latitude:	39.660618
	+E/-W	0.0 usft	Easting:	2,447,003.30 usft	Longitude:	-108.134294
Position Uncertainty		0.0 usft	Wellhead Elevation:	usft	Ground Level:	8,164.0 usft

Wellbore	Wellbore #1				
Magnetics	Model Name	Sample Date	Declination (°)	Dip Angle (°)	Field Strength (nT)
	HDGM2022	1/20/2022	9.25	65.72	51,118.00000000

Design	Wellbore #1				
Audit Notes:					
Version:	1.0	Phase:	ACTUAL	Tie On Depth:	0.0
Vertical Section:	Depth From (TVD) (usft)	+N/-S (usft)	+E/-W (usft)	Direction (°)	
	0.0	0.0	0.0	176.76	

Survey Program	Date	1/29/2022			
From (usft)	To (usft)	Survey (Wellbore)	Tool Name	Description	
30.0	118.0	Sfc Gyro (Wellbore #1)	GYRO-NS	OWSG Gyrocompass Gyro	
333.0	11,694.0	KLX MWD (Wellbore #1)	MWD	OWSG MWD - Standard	

Survey										
Measured Depth (usft)	Inclination (°)	Azimuth (°)	Vertical Depth (usft)	+N/-S (usft)	+E/-W (usft)	Vertical Section (usft)	Dogleg Rate (°/100usft)	Build Rate (°/100usft)	Turn Rate (°/100usft)	
0.0	0.00	0.00	0.0	0.0	0.0	0.0	0.00	0.00	0.00	
30.0	0.00	0.00	30.0	0.0	0.0	0.0	0.00	0.00	0.00	
60.0	0.90	231.36	60.0	-0.1	-0.2	0.1	3.00	3.00	0.00	
90.0	1.20	239.38	90.0	-0.5	-0.6	0.4	1.11	1.00	26.73	
Gyro Tie-in @ 118.0' MD / 118.0' TVD										
118.0	0.59	270.36	118.0	-0.6	-1.0	0.5	2.71	-2.18	110.64	
333.0	6.30	182.80	332.6	-12.4	-2.7	12.2	2.93	2.66	-40.73	
423.0	8.10	168.90	421.8	-23.5	-1.7	23.4	2.77	2.00	-15.44	
517.0	9.30	168.90	514.8	-37.5	1.0	37.5	1.28	1.28	0.00	
612.0	7.20	173.30	608.8	-50.9	3.2	51.0	2.31	-2.21	4.63	

Company:	Caerus Oil & Gas	Local Co-ordinate Reference:	Well BJU G35 FED 23C-35 496 - Slot 23C-35
Project:	Garfield County, CO	TVD Reference:	RKB @ 8194.0usft (H&P#329)
Site:	NPM G35 496 Pad	MD Reference:	RKB @ 8194.0usft (H&P#329)
Well:	BJU G35 FED 23C-35 496	North Reference:	True
Wellbore:	Wellbore #1	Survey Calculation Method:	Minimum Curvature
Design:	Wellbore #1	Database:	EDM 5000.1 Single User Db

Survey										
Measured Depth (usft)	Inclination (°)	Azimuth (°)	Vertical Depth (usft)	+N/-S (usft)	+E/-W (usft)	Vertical Section (usft)	Dogleg Rate (°/100usft)	Build Rate (°/100usft)	Turn Rate (°/100usft)	
707.0	7.30	169.80	703.0	-62.8	4.9	63.0	0.48	0.11	-3.68	
801.0	8.20	169.60	796.2	-75.3	7.2	75.6	0.96	0.96	-0.21	
896.0	8.40	173.00	890.2	-88.8	9.3	89.2	0.56	0.21	3.58	
991.0	8.70	161.70	984.1	-102.5	12.4	103.1	1.79	0.32	-11.89	
1,086.0	8.70	163.10	1,078.0	-116.2	16.7	117.0	0.22	0.00	1.47	
1,180.0	7.70	171.10	1,171.1	-129.3	19.8	130.2	1.61	-1.06	8.51	
1,275.0	7.60	185.00	1,265.2	-141.8	20.2	142.7	1.95	-0.11	14.63	
1,369.0	8.50	189.30	1,358.3	-154.8	18.5	155.6	1.15	0.96	4.57	
1,464.0	7.90	185.30	1,452.3	-168.3	16.8	169.0	0.87	-0.63	-4.21	
1,559.0	7.90	180.50	1,546.4	-181.3	16.1	181.9	0.69	0.00	-5.05	
1,653.0	8.60	172.80	1,639.5	-194.7	17.0	195.4	1.39	0.74	-8.19	
1,748.0	8.80	163.80	1,733.4	-208.8	19.9	209.6	1.45	0.21	-9.47	
1,842.0	8.80	155.20	1,826.3	-222.2	24.9	223.2	1.40	0.00	-9.15	
1,937.0	8.30	157.90	1,920.2	-235.1	30.5	236.5	0.67	-0.53	2.84	
2,032.0	7.20	164.90	2,014.3	-247.2	34.7	248.8	1.52	-1.16	7.37	
2,126.0	6.60	170.00	2,107.7	-258.3	37.1	259.9	0.91	-0.64	5.43	
2,221.0	7.20	172.60	2,202.0	-269.5	38.8	271.3	0.71	0.63	2.74	
2,316.0	8.00	172.60	2,296.1	-282.0	40.5	283.8	0.84	0.84	0.00	
2,410.0	7.70	172.50	2,389.3	-294.7	42.1	296.6	0.32	-0.32	-0.11	
2,505.0	8.10	174.30	2,483.4	-307.7	43.6	309.7	0.50	0.42	1.89	
2,600.0	8.10	175.90	2,577.4	-321.0	44.8	323.0	0.24	0.00	1.68	
2,694.0	7.90	174.10	2,670.5	-334.1	45.9	336.1	0.34	-0.21	-1.91	
2,789.0	7.70	174.80	2,764.6	-346.9	47.1	349.0	0.23	-0.21	0.74	
2,883.0	7.60	174.90	2,857.8	-359.4	48.3	361.5	0.11	-0.11	0.11	
2,932.0	7.40	175.50	2,906.4	-365.7	48.8	367.9	0.44	-0.41	1.22	
3,077.0	7.60	174.50	3,050.1	-384.6	50.5	386.8	0.16	0.14	-0.69	
3,171.0	9.00	178.70	3,143.1	-398.1	51.2	400.4	1.62	1.49	4.47	
3,266.0	8.80	179.30	3,237.0	-412.8	51.5	415.1	0.23	-0.21	0.63	
3,361.0	8.40	179.50	3,330.9	-427.0	51.6	429.3	0.42	-0.42	0.21	
3,455.0	8.00	178.80	3,424.0	-440.4	51.8	442.7	0.44	-0.43	-0.74	
3,550.0	8.50	179.10	3,518.0	-454.1	52.1	456.3	0.53	0.53	0.32	
3,645.0	8.30	180.60	3,612.0	-467.9	52.1	470.1	0.31	-0.21	1.58	
3,739.0	8.30	172.70	3,705.0	-481.4	52.9	483.7	1.21	0.00	-8.40	
3,834.0	7.60	169.10	3,799.1	-494.4	55.0	496.7	0.90	-0.74	-3.79	
3,928.0	8.80	172.90	3,892.1	-507.7	57.0	510.1	1.40	1.28	4.04	
4,023.0	8.90	175.80	3,986.0	-522.2	58.5	524.7	0.48	0.11	3.05	
4,117.0	8.70	175.80	4,078.9	-536.5	59.5	539.0	0.21	-0.21	0.00	
4,212.0	7.70	173.30	4,172.9	-550.0	60.8	552.6	1.12	-1.05	-2.63	
4,306.0	8.40	173.20	4,266.0	-563.1	62.3	565.7	0.74	0.74	-0.11	
4,401.0	8.00	175.20	4,360.0	-576.6	63.7	579.3	0.52	-0.42	2.11	
4,495.0	8.00	174.40	4,453.1	-589.6	64.9	592.3	0.12	0.00	-0.85	
4,590.0	7.10	176.20	4,547.3	-602.0	65.9	604.8	0.98	-0.95	1.89	
4,685.0	8.60	178.20	4,641.4	-615.0	66.5	617.8	1.60	1.58	2.11	

Company:	Caerus Oil & Gas	Local Co-ordinate Reference:	Well BJU G35 FED 23C-35 496 - Slot 23C-35
Project:	Garfield County, CO	TVD Reference:	RKB @ 8194.0usft (H&P#329)
Site:	NPM G35 496 Pad	MD Reference:	RKB @ 8194.0usft (H&P#329)
Well:	BJU G35 FED 23C-35 496	North Reference:	True
Wellbore:	Wellbore #1	Survey Calculation Method:	Minimum Curvature
Design:	Wellbore #1	Database:	EDM 5000.1 Single User Db

Survey										
Measured Depth (usft)	Inclination (°)	Azimuth (°)	Vertical Depth (usft)	+N/-S (usft)	+E/-W (usft)	Vertical Section (usft)	Dogleg Rate (°/100usft)	Build Rate (°/100usft)	Turn Rate (°/100usft)	
4,779.0	7.90	181.00	4,734.4	-628.5	66.6	631.2	0.86	-0.74	2.98	
4,874.0	8.30	168.90	4,828.4	-641.7	67.9	644.6	1.84	0.42	-12.74	
4,969.0	8.10	168.50	4,922.5	-655.0	70.5	658.0	0.22	-0.21	-0.42	
5,063.0	7.50	169.50	5,015.6	-667.6	72.9	670.6	0.65	-0.64	1.06	
5,157.0	8.20	166.80	5,108.7	-680.1	75.6	683.3	0.84	0.74	-2.87	
5,252.0	8.00	168.70	5,202.8	-693.2	78.4	696.5	0.35	-0.21	2.00	
5,346.0	7.30	170.40	5,295.9	-705.5	80.7	708.9	0.78	-0.74	1.81	
5,441.0	7.80	170.70	5,390.1	-717.8	82.8	721.3	0.53	0.53	0.32	
5,536.0	9.30	172.70	5,484.1	-731.8	84.8	735.4	1.61	1.58	2.11	
5,630.0	9.10	170.70	5,576.8	-746.7	86.9	750.4	0.40	-0.21	-2.13	
5,725.0	8.20	170.80	5,670.8	-760.8	89.2	764.6	0.95	-0.95	0.11	
5,819.0	7.80	170.40	5,763.8	-773.7	91.4	777.6	0.43	-0.43	-0.43	
5,914.0	9.00	177.00	5,857.8	-787.4	92.8	791.4	1.62	1.26	6.95	
6,008.0	8.50	178.70	5,950.7	-801.7	93.4	805.7	0.60	-0.53	1.81	
6,103.0	7.90	179.60	6,044.8	-815.3	93.6	819.3	0.65	-0.63	0.95	
6,198.0	7.80	178.00	6,138.9	-828.2	93.9	832.2	0.25	-0.11	-1.68	
6,292.0	8.60	180.90	6,231.9	-841.6	94.0	845.6	0.96	0.85	3.09	
6,387.0	8.80	183.80	6,325.8	-856.0	93.4	859.9	0.51	0.21	3.05	
6,481.0	9.20	177.70	6,418.7	-870.7	93.2	874.6	1.10	0.43	-6.49	
6,576.0	9.10	176.30	6,512.5	-885.8	94.0	889.7	0.26	-0.11	-1.47	
6,670.0	8.80	177.70	6,605.3	-900.4	94.8	904.3	0.39	-0.32	1.49	
6,765.0	8.60	177.30	6,699.2	-914.7	95.4	918.7	0.22	-0.21	-0.42	
6,859.0	8.30	177.50	6,792.2	-928.5	96.0	932.5	0.32	-0.32	0.21	
6,954.0	8.20	178.70	6,886.2	-942.1	96.5	946.1	0.21	-0.11	1.26	
7,048.0	8.00	168.20	6,979.3	-955.3	98.0	959.3	1.59	-0.21	-11.17	
7,143.0	7.90	166.40	7,073.4	-968.1	100.8	972.2	0.28	-0.11	-1.89	
7,237.0	7.20	170.90	7,166.6	-980.2	103.3	984.4	0.97	-0.74	4.79	
7,332.0	6.20	168.80	7,260.9	-991.1	105.2	995.4	1.08	-1.05	-2.21	
7,426.0	5.40	179.60	7,354.4	-1,000.5	106.3	1,004.9	1.44	-0.85	11.49	
7,521.0	5.20	183.50	7,449.0	-1,009.2	106.0	1,013.6	0.43	-0.21	4.11	
7,616.0	5.10	189.60	7,543.6	-1,017.7	105.1	1,022.0	0.59	-0.11	6.42	
7,710.0	4.90	182.10	7,637.3	-1,025.8	104.2	1,030.1	0.73	-0.21	-7.98	
7,805.0	4.00	174.70	7,732.0	-1,033.2	104.4	1,037.4	1.12	-0.95	-7.79	
7,899.0	2.60	159.30	7,825.8	-1,038.5	105.4	1,042.7	1.75	-1.49	-16.38	
7,994.0	2.30	150.60	7,920.8	-1,042.1	107.1	1,046.5	0.50	-0.32	-9.16	
8,088.0	1.50	153.00	8,014.7	-1,044.9	108.6	1,049.3	0.86	-0.85	2.55	
8,183.0	0.50	334.90	8,109.7	-1,045.6	109.0	1,050.1	2.11	-1.05	-187.47	
8,277.0	0.80	321.80	8,203.7	-1,044.7	108.4	1,049.2	0.35	0.32	-13.94	
8,372.0	0.80	302.80	8,298.7	-1,043.8	107.4	1,048.2	0.28	0.00	-20.00	
8,466.0	0.80	291.00	8,392.7	-1,043.2	106.3	1,047.6	0.17	0.00	-12.55	
8,561.0	1.00	279.30	8,487.7	-1,042.9	104.8	1,047.1	0.28	0.21	-12.32	
8,656.0	1.00	262.60	8,582.6	-1,042.8	103.2	1,047.0	0.31	0.00	-17.58	
8,750.0	1.30	241.50	8,676.6	-1,043.5	101.5	1,047.5	0.55	0.32	-22.45	

Company:	Caerus Oil & Gas	Local Co-ordinate Reference:	Well BJU G35 FED 23C-35 496 - Slot 23C-35
Project:	Garfield County, CO	TVD Reference:	RKB @ 8194.0usft (H&P#329)
Site:	NPM G35 496 Pad	MD Reference:	RKB @ 8194.0usft (H&P#329)
Well:	BJU G35 FED 23C-35 496	North Reference:	True
Wellbore:	Wellbore #1	Survey Calculation Method:	Minimum Curvature
Design:	Wellbore #1	Database:	EDM 5000.1 Single User Db

Survey										
Measured Depth (usft)	Inclination (°)	Azimuth (°)	Vertical Depth (usft)	+N/-S (usft)	+E/-W (usft)	Vertical Section (usft)	Dogleg Rate (°/100usft)	Build Rate (°/100usft)	Turn Rate (°/100usft)	
8,845.0	0.80	224.10	8,771.6	-1,044.4	100.0	1,048.4	0.62	-0.53	-18.32	
8,939.0	0.40	135.90	8,865.6	-1,045.2	99.8	1,049.1	0.94	-0.43	-93.83	
9,034.0	0.50	151.30	8,960.6	-1,045.8	100.2	1,049.8	0.16	0.11	16.21	
9,128.0	0.60	175.90	9,054.6	-1,046.6	100.5	1,050.6	0.27	0.11	26.17	
9,223.0	0.60	200.40	9,149.6	-1,047.6	100.3	1,051.6	0.27	0.00	25.79	
9,317.0	0.90	202.70	9,243.6	-1,048.7	99.9	1,052.7	0.32	0.32	2.45	
9,412.0	1.40	212.40	9,338.6	-1,050.4	99.0	1,054.3	0.56	0.53	10.21	
9,507.0	0.50	175.70	9,433.5	-1,051.8	98.4	1,055.7	1.10	-0.95	-38.63	
9,601.0	0.40	179.60	9,527.5	-1,052.5	98.4	1,056.4	0.11	-0.11	4.15	
9,696.0	0.80	205.80	9,622.5	-1,053.4	98.1	1,057.3	0.50	0.42	27.58	
9,790.0	1.10	198.20	9,716.5	-1,054.9	97.6	1,058.7	0.35	0.32	-8.09	
9,885.0	1.40	198.40	9,811.5	-1,056.9	96.9	1,060.6	0.32	0.32	0.21	
9,980.0	1.10	198.30	9,906.5	-1,058.8	96.3	1,062.6	0.32	-0.32	-0.11	
10,074.0	0.50	213.20	10,000.5	-1,060.0	95.8	1,063.7	0.67	-0.64	15.85	
10,169.0	0.80	226.50	10,095.5	-1,060.8	95.0	1,064.5	0.35	0.32	14.00	
10,263.0	1.30	216.30	10,189.5	-1,062.1	93.9	1,065.7	0.57	0.53	-10.85	
10,358.0	1.30	215.80	10,284.4	-1,063.9	92.7	1,067.4	0.01	0.00	-0.53	
10,453.0	1.20	214.20	10,379.4	-1,065.6	91.5	1,069.0	0.11	-0.11	-1.68	
10,547.0	1.50	209.80	10,473.4	-1,067.5	90.3	1,070.9	0.34	0.32	-4.68	
10,642.0	1.60	205.70	10,568.3	-1,069.7	89.1	1,073.1	0.16	0.11	-4.32	
10,737.0	1.90	205.40	10,663.3	-1,072.3	87.9	1,075.6	0.32	0.32	-0.32	
10,831.0	2.30	208.90	10,757.2	-1,075.4	86.3	1,078.6	0.45	0.43	3.72	
10,926.0	2.60	205.40	10,852.1	-1,079.0	84.4	1,082.1	0.35	0.32	-3.68	
11,020.0	3.10	206.80	10,946.0	-1,083.2	82.4	1,086.1	0.54	0.53	1.49	
11,115.0	3.70	205.20	11,040.9	-1,088.3	79.9	1,091.1	0.64	0.63	-1.68	
11,210.0	4.30	205.80	11,135.6	-1,094.3	77.1	1,096.9	0.63	0.63	0.63	
11,305.0	3.30	200.50	11,230.4	-1,100.0	74.6	1,102.5	1.11	-1.05	-5.58	
11,399.0	2.50	208.10	11,324.3	-1,104.4	72.6	1,106.7	0.94	-0.85	8.09	
11,494.0	2.60	216.60	11,419.2	-1,107.9	70.4	1,110.1	0.41	0.11	8.95	
11,588.0	3.20	226.30	11,513.1	-1,111.5	67.2	1,113.5	0.82	0.64	10.32	
11,637.0	3.00	226.60	11,562.0	-1,113.3	65.3	1,115.2	0.41	-0.41	0.61	
TD @ 11694.0' MD / 11618.9' TVD										
11,694.0	3.00	226.60	11,618.9	-1,115.3	63.1	1,117.1	0.00	0.00	0.00	

Design Annotations					
Measured Depth (usft)	Vertical Depth (usft)	Local Coordinates		Comment	
		+N/-S (usft)	+E/-W (usft)		
118.0	118.0	-0.6	-1.0	Gyro Tie-in @ 118.0' MD / 118.0' TVD	
11,694.0	11,618.9	-1,115.3	63.1	TD @ 11694.0' MD / 11618.9' TVD	

Checked By: _____ Approved By: _____ Date: _____