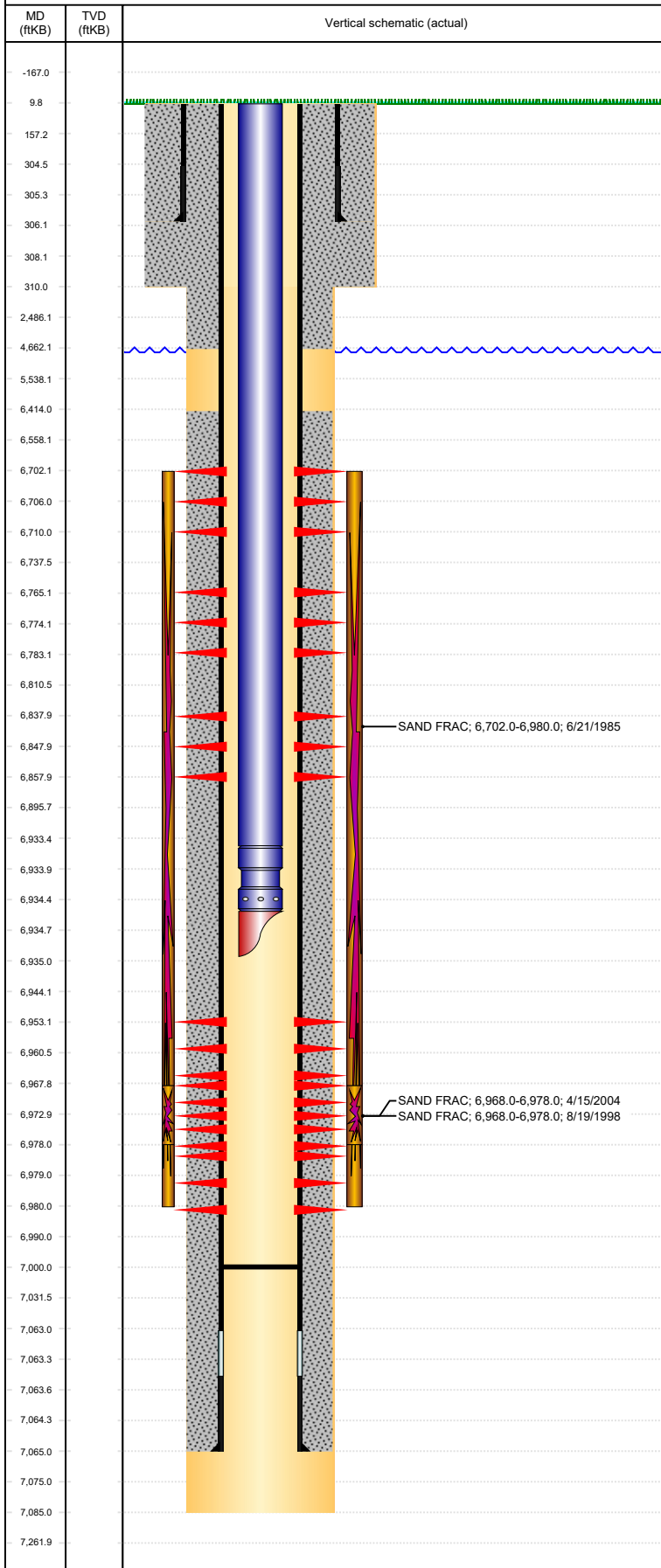


Wellbore Schematic Input Report-DJ

Well Name: JOHNSON 29-1

VERTICAL, ORIGINAL HOLE, 4/14/2022 4:07:17 PM



Well Header

API 05-123-12458	Business Unit DJ BASIN	District 15	Well Config VERTICAL
Original KB Elevation (ft) 4,778	KB - GL / MSL (ftKB) 10.00	Spud Date 6/1/1985	P & A Date

Comment

LIMITED ENTRY. DISCREP IN TD: DRL RPT 7085', ST RPT 7075', USED DRL RPT TD. LITTLE INFO ON 2006 TUBING REPAIR, USED SIZE FROM 2004 TUBING. CODELL REFRAC - SCREENED OUT AFTER 308000# & 117000 GAL. CD TRIFRAC DEPTHS GIVEN ON TREATMENT RPT INCORRECT, USED REFRAC DEPTHS. FIELD OPERATIONS NOTICE - FLOWLINES ABANDONED PER RULE 1103, RCVD 6/28/17. STATE SHOWS SHUT IN SINCE MAY 2017.

Directions To Well

WCR 53 & 42 W 0.1, SE INTO

Congressional Location

Quarter 3 NE	Quarter 4 NE	Section 29	Township 4	Twnshp N/S Dir N	Range 64	Range E/W Dir W
-----------------	-----------------	---------------	---------------	---------------------	-------------	--------------------

Bottom Hole Legal Location

Bottom Hole Legal Location

Plug Back Total Depths

Date	Depth (ftKB)	Method	Com
6/8/1985	7,023.0	CASING TALLY	TOP OF FLOAT COLLAR
6/13/1985	6,911.0	CASED HOLE LOG	DEPTH LOGGER ON CBL
8/13/2006	7,000.0	TAG	BAIL SAND TO 7000'

Wellbore Sections

Section Des	Size (in)	Act Top, MD (ftKB)	Act Btm, MD (ftKB)
SURFACE	12 1/4	10	310
PRODUCTION	7 7/8	310	7,085

Zone Statuses

Zone Name	Status Date	Status	Fluid Type	Job	Prod Method
CODELL	7/2/1985	PR		DRILLING/CO...	Flowing
CODELL	8/23/1998	PR		RE-FRAC, 8/8/...	Flowing
CODELL	4/18/2004	PR		TRI-FRAC, 4/8/...	Flowing
NIOBRARA	7/2/1985	PR		DRILLING/CO...	Flowing

Casing Strings

Surface, 306.0ftKB

Casing Description	Run Date	OD (in)	Wt/Len (l...)	Grade	Top, MD (ft...)	MD (ftKB)
Surface	6/2/1985	8 5/8	24.00	J-55	10.0	306.0

Production, 7,065.0ftKB

Casing Description	Run Date	OD (in)	Wt/Len (l...)	Grade	Top, MD (ft...)	MD (ftKB)
Production	6/8/1985	4 1/2	11.60	N-80	10.0	7,065.0

Cement

Description	Top Depth (ftKB)	Bottom Depth (ftKB)
SURFACE CASING CEMENT	10.0	306.0
PRODUCTION CASING CEMENT	6,414.0	7,065.0
REMEDIAL CASING CEMENT	10.0	4,662.0

Tubing Strings

Tubing Description	Run Date	String...	ID (in)	Wt (lb/ft)	Grade	Len (ft)	Set De...
Tubing - Production	4/16/2004	2 3/8				6,917.00	

Tubing Components

Item Des	OD (in)	Wt (lb/ft)	Grade	Jts	Len (ft)	Btm (ftKB)	Btm (TVD) (ftKB)
Tubing	2 3/8			225	6,915.50	6,925.5	
Pump Seating Nipple	2 3/8			1	1.00	6,926.5	
Mule Shoe	2 3/8			1	0.50	6,927.0	

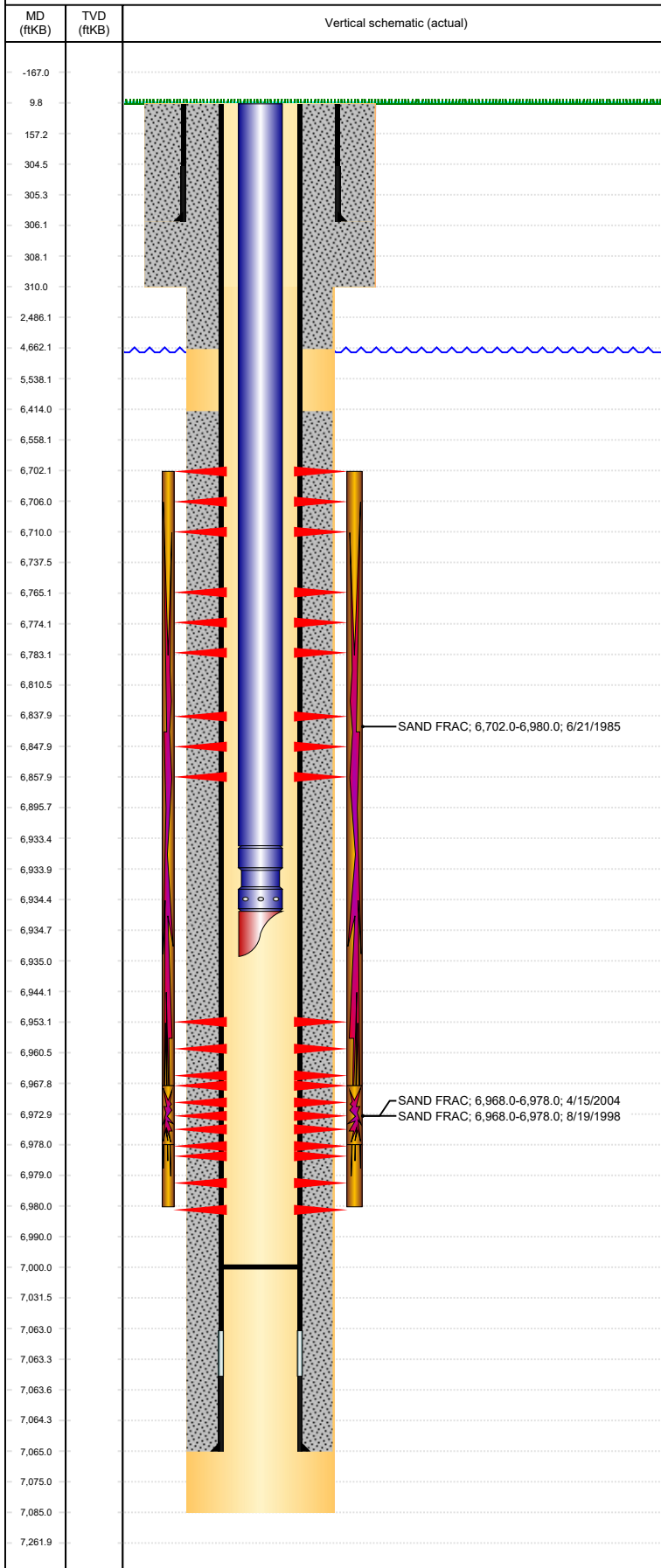
Tubing Description	Run Date	String...	ID (in)	Wt (lb/ft)	Grade	Len (ft)	Set De...
Tubing - Production	8/13/2006	2 3/8	2.00	4.70	J-55	6,925.00	

Tubing Components

Item Des	OD (in)	Wt (lb/ft)	Grade	Jts	Len (ft)	Btm (ftKB)	Btm (TVD) (ftKB)
Tubing	2 3/8	4.70	J-55	225	6,923.50	6,933.5	
Seal Nipple	2 3/8			1	1.00	6,934.5	
Mule Shoe	2 3/8			1	0.50	6,935.0	

Well Name: JOHNSON 29-1

VERTICAL, ORIGINAL HOLE, 4/14/2022 4:07:17 PM



Other In Hole

Run Date	Des	Make	OD (in)	Top (ftKB)	Btm (ftKB)	Pr op R un

Logs

Date	Type	Top, MD (ftKB)	Btm, MD (ftKB)
6/6/1985	COMPENSATED DENSITY	300.0	7,093.0
6/6/1985	INDUCTION	300.0	7,093.0
6/13/1985	CEMENT BOND	6,300.0	6,908.0
6/11/2020	GYRO	1.0	6,900.0

Perforation Data

Linked Zone	Bnch/St g	Sum of Entered Shot Total	Top (ftKB)	Btm (ftKB)	Date
NIOBRARA, ORIGINAL HOLE	A	3	6,702.00	6,710.00	6/18/1985
NIOBRARA, ORIGINAL HOLE	B	4	6,765.00	6,783.00	6/18/1985
NIOBRARA, ORIGINAL HOLE	C	3	6,838.00	6,858.00	6/18/1985
CODELL, ORIGINAL HOLE		6	6,953.00	6,980.00	6/18/1985
CODELL, ORIGINAL HOLE		40	6,968.00	6,978.00	8/12/1998

Total

Stimulation Intervals

Interval...	Start Date	Primary Job Type	Zone
1	6/21/1985	DRILLING/COMPLETION - ORIGINAL	NIOBRARA-CODELL, ORIGINAL...
Technical Result		Tech Result Details	Tech Result Note

Comment

CODELL/NIOB FRAC
LIMITED ENTRY

Not mapped: stimulation.user2 = 270,000# 20/40 and 15,000# 12/20 interprop

Not mapped: stimulation.user1 = 2854 bbls gel + 80 BO

Interval...	Start Date	Primary Job Type	Zone
1	8/19/1998	RE-FRAC	CODELL, ORIGINAL HOLE
Technical Result		Tech Result Details	Tech Result Note

Comment

CODELL REFRAC
SCREENED OUT AFTER 308000# & 117000 GAL

Not mapped: stimulation.user2 = 324,000# 20/40

Not mapped: stimulation.user1 = 132,000 gal Prima gel

Screened out 3 times, never pumped Acfrac PRB.

Interval...	Start Date	Primary Job Type	Zone
1	4/15/2004	TRI-FRAC	CODELL, ORIGINAL HOLE
Technical Result		Tech Result Details	Tech Result Note

Comment

CODELL TRIFRAC

Not mapped: stimulation.user2 = 261,340# 20/40 sd

Not mapped: stimulation.user1 = 89,477 gal 28#, 27# and 26# Vistar gel

Trifraced Codell w/ 261,340# 20/40 sd, using 89,477 gal 28#, 27# and 26# Vistar gel