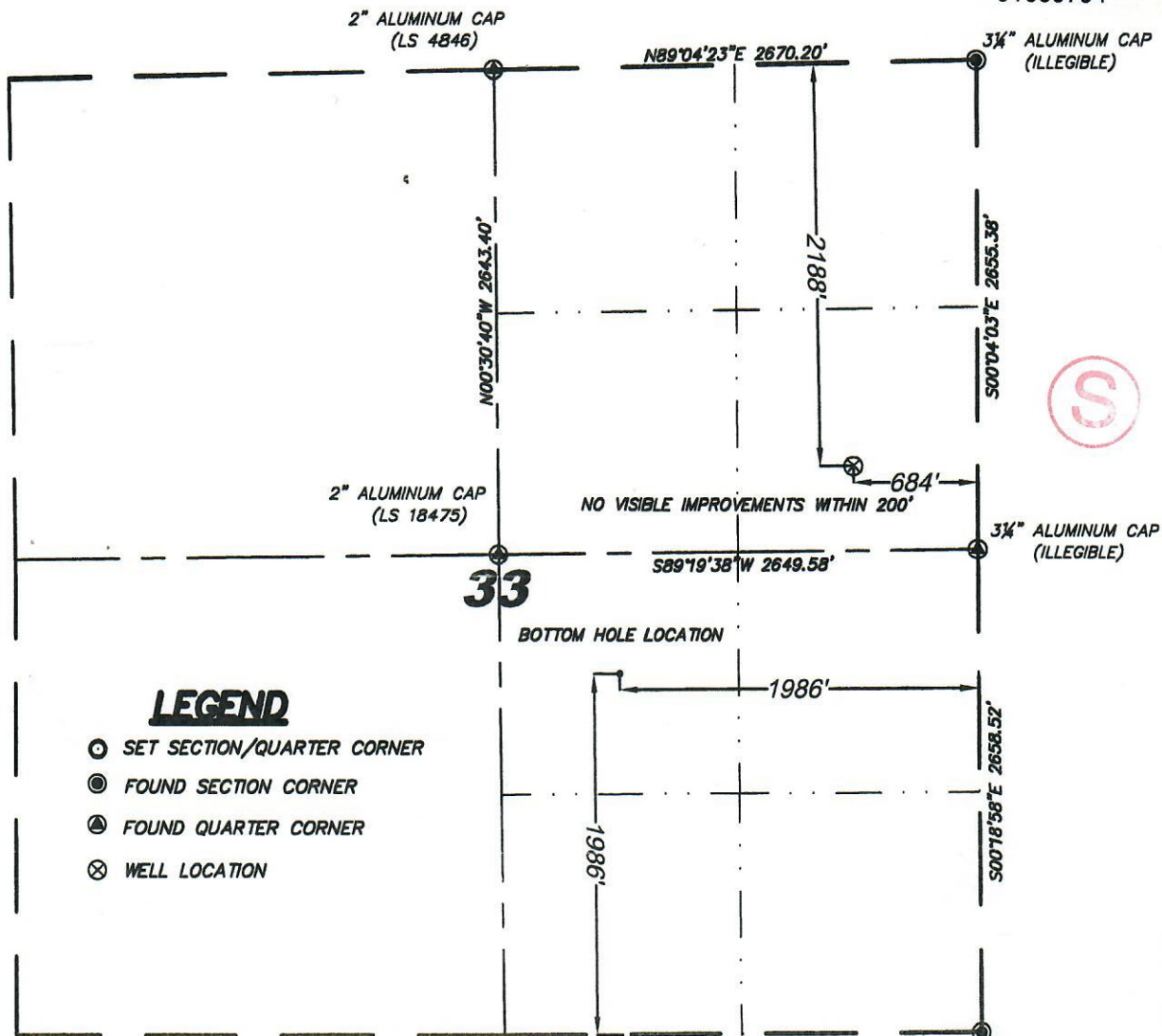




01609794

**LEGEND**

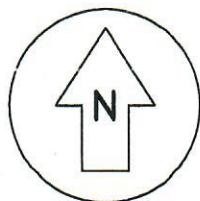
- ⊙ SET SECTION/QUARTER CORNER
- ⊙ FOUND SECTION CORNER
- ⊙ FOUND QUARTER CORNER
- ⊗ WELL LOCATION

NOTES

- 1.) BASIS OF BEARINGS - GEODETIC BEARINGS AS ESTABLISHED BY GPS (GLOBAL POSITIONING SYSTEM).
- 2.) THIS IS NOT A MONUMENTED SURVEY. IT IS INTENDED TO SHOW WELL LOCATION ONLY.
- 3.) GROUND ELEVATION = 5218'.
- 4.) CLIENT DID NOT WANT RIGHTS-OF-WAY AND EASEMENTS SHOWN.
- 5.) ELEVATION SOURCE= USGS 7.5\"/>

CERTIFICATE OF SURVEYOR

I, John A. Stell, Registered Professional Land Surveyor in the State of Colorado, hereby state, to the best of my knowledge, information and belief, that this map was prepared from field notes taken during an actual survey made by me or under my direct supervision; and that this map correctly shows the results of said survey and that the monuments found are as shown.



0 1000
Scale: 1" = 1000'

DRAWN BY: MSH

DATE DRAWN: 10-12-2005

DATE OF SURVEY: 10-06-2005

DWG. NO.: G33-33D.DWG/REF. 05144

APPROVED BY: JAS

GRAEBER 33-33D

SE 1/4 NE 1/4 S33, T.1N., R.68W., 6TH P.M.

WELD COUNTY, COLORADO

OPERATOR: U.S. EXPLORATION

**STELL SURVEYING
SERVICES, LLC**PROFESSIONAL LAND SURVEYORS
1102 WEST 19th STREET P.O. BOX 2073
PH(307)634-7273 CHEYENNE, WY. 82003