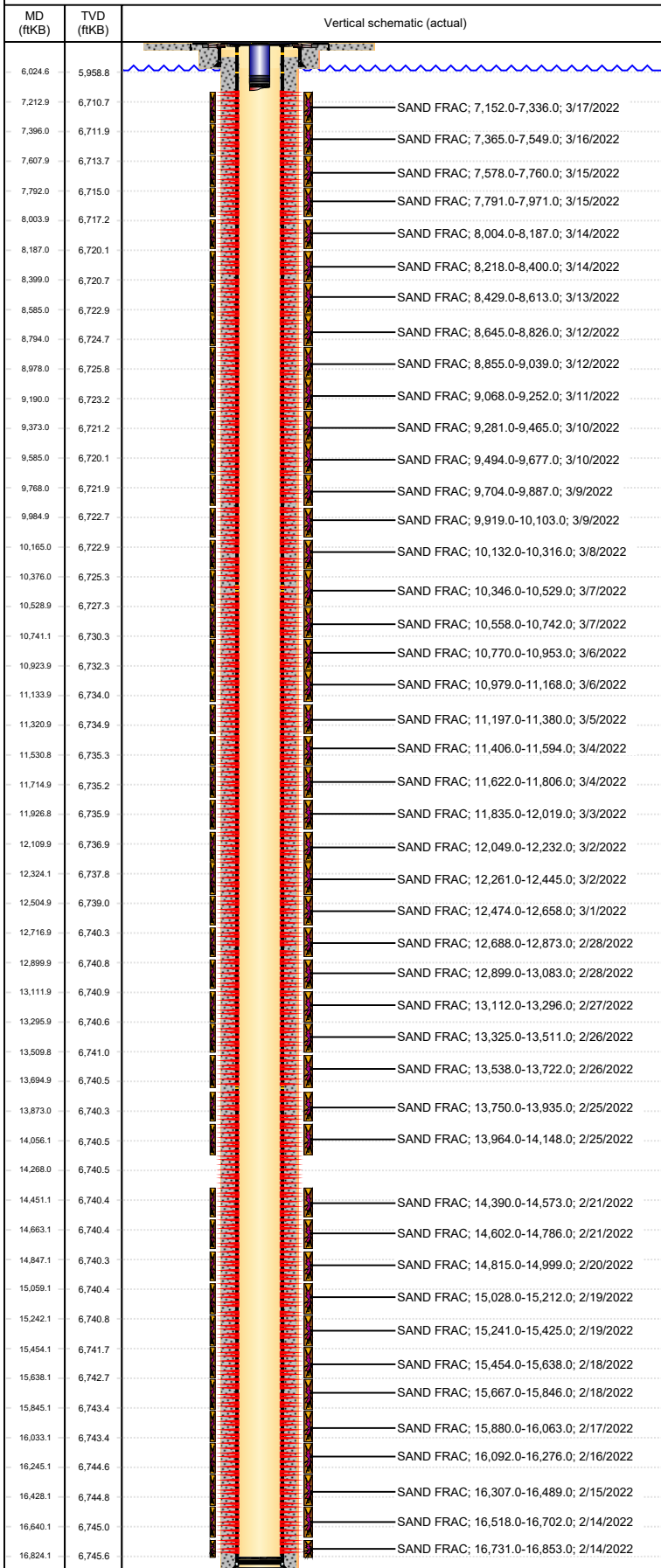


Well Name: REVELLE A34-768

HORIZONTAL, ORIGINAL HOLE, 4/14/2022 4:04:24 PM



Well Header								
API	05-123-50792	Business Unit	DJ BASIN	District	15	Well Config	HORIZONTAL	
Original KB Elevation (ft)	4,661	KB - GL / MSL (ftKB)	30.00	Spud Date	2/6/2021	P & A Date		
Comment								
FAKE RC NUMBER CREATED TO FEED DATA TO ACTS								
Directions To Well								
WCR 55 & 62: EAST 0.4 MILE, NORTH INTO								
Congressional Location								
Quarter 3	SE	Quarter 4	SW	Section	34	Township	6	
Twntshp N/S Dir		N		Range	64	Range E/W Dir		W
Bottom Hole Legal Location								
Bottom Hole Legal Location								
6 68/SESW-27-006N-064W6PM								
Plug Back Total Depths								
Date	2/11/2021	Depth (ftKB)	16,949.7	Method	CASING TALLY		Com	
Wellbore Sections								
Section Des	CONDUCTOR	Size (in)	26	Act Top, MD (ftKB)	30	Act Btm, MD (ftKB)	110	
SURFACE		13 1/2		110		1,956		
PRODUCTION		8 1/2		1956		17,016		
Zone Statuses								
Zone Name	Status Date	Status	Fluid Type	Job	Prod Method			
	4/2/2022	PR	GAS	COMPLETION...	Flowing			
	4/2/2022	PR	OIL	COMPLETION...	Flowing			
Casing Strings								
CONDUCTOR, 110.0ftKB								
Casing Description	Run Date	OD (in)	Wt/Len (l...)	Grade	Top, MD (ft...)	MD (ftKB)		
CONDUCTOR		16	36.94	A-52A	30.0	110.0		
SURFACE, 1,946.2ftKB								
Casing Description	Run Date	OD (in)	Wt/Len (l...)	Grade	Top, MD (ft...)	MD (ftKB)		
SURFACE	2/7/2021	9 5/8	36.00	J-55	30.0	1,946.2		
PRODUCTION, 16,998.5ftKB								
Casing Description	Run Date	OD (in)	Wt/Len (l...)	Grade	Top, MD (ft...)	MD (ftKB)		
PRODUCTION	2/10/2021	5 1/2	17.00	Benteler P...	30.0	16,998.5		
Cement								
Description	Conductor Cement	Top Depth (ftKB)	30.0	Bottom Depth (ftKB)	110.0			
Description	Surface Casing Cement	Top Depth (ftKB)	30.0	Bottom Depth (ftKB)	1,946.2			
Description	Production Casing Cement	Top Depth (ftKB)	1,827.0	Bottom Depth (ftKB)	16,998.5			
Tubing Strings								
Tubing Description	Run Date	String...	ID (in)	Wt (lb/ft)	Grade	Len (ft)	Set De...	
TUBING - PRODUCTION	3/31/2022	2 3/8	2.00	4.70	L-80	6,931.71	6,686.9	
Tubing Components								
Item Des	OD (in)	Wt (lb/ft)	Grade	Jts	Len (ft)	Btm (ftKB)	Btm (TVD) (ftKB)	
Tubing Hanger	7 1/8	4.70	N-80	1	0.50	30.5	30.5	
Tubing	2 3/8	4.70	L-80	209	6,459.81	6,490.3	6,405.6	
X-Nipple	2 3/8	4.70	N-80	1	0.90	6,491.2	6,406.4	
Tubing	2 3/8	4.70	L-80	15	465.28	6,956.5	6,685.6	
XN-Nipple	2 3/8	4.70	N-80	1	0.90	6,957.4	6,685.8	
Tubing Pup Joint	2 3/8	4.70	N-80	1	3.10	6,960.5	6,686.6	
Ceramic disc sub	2 3/8	4.70	N-80	1	0.80	6,961.3	6,686.8	
Mule Shoe	2 3/8	4.70	N-80	1	0.42	6,961.7	6,686.9	
Other In Hole								
Run Date	Des	Make	OD (in)	Top (ftKB)	Btm (ftKB)	Pr op R un		
Logs								
Date	Type	Top, MD (ftKB)	Btm, MD (ftKB)					
2/7/2021	MWD	1,956.0	17,003.0					
3/21/2021	RADIAL SECTOR CBL	30.0	7,039.0					

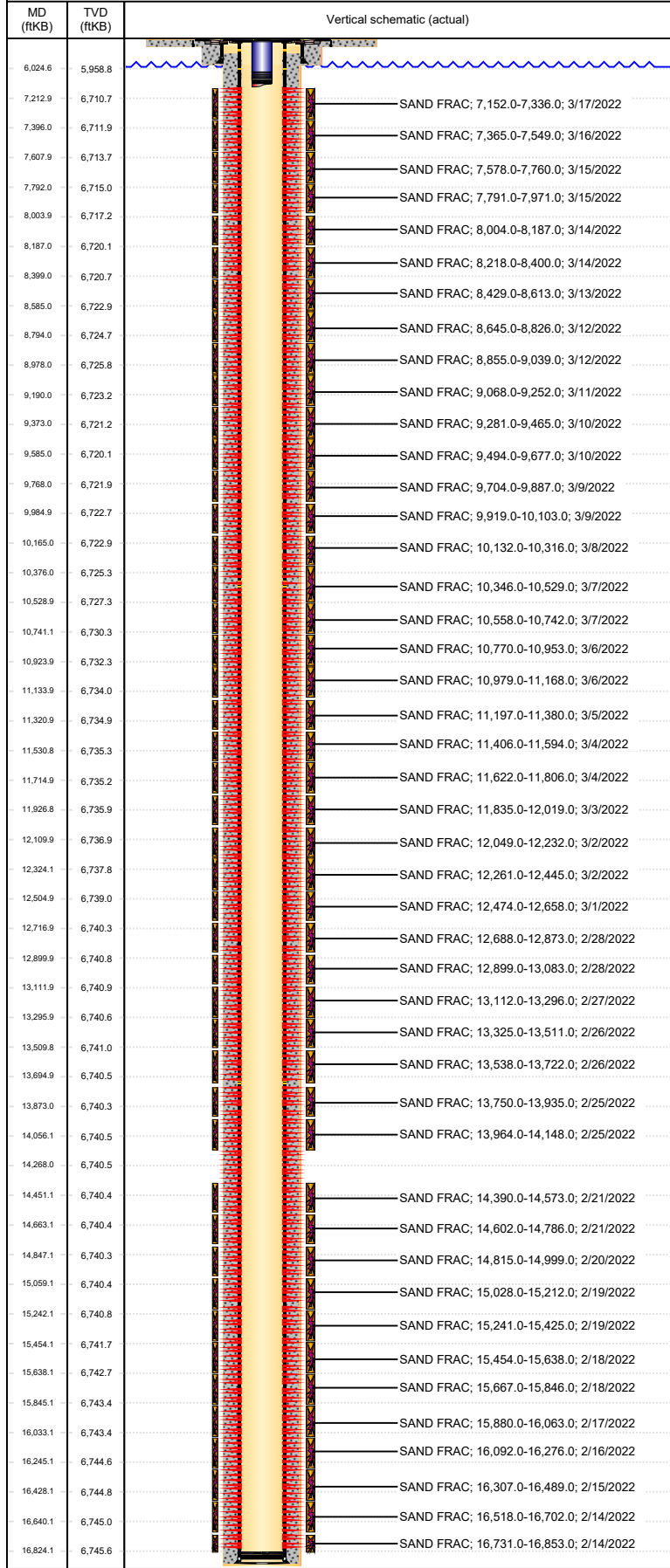
Well Name: REVELLE A34-768

HORIZONTAL, ORIGINAL HOLE, 4/14/2022 4:04:24 PM

Vertical schematic (actual)		Perforation Data					
MD (ftKB)	TVD (ftKB)	Linked Zone	Bnch/St g	Sum of Entered Shot Total	Top (ftKB)	Btm (ftKB)	Date
6.024.6	5.958.8			4	7,152.00	7,153.00	3/17/2022
7.212.9	6.710.7	SAND FRAC; 7,152.0-7,336.0; 3/17/2022		4	7,183.00	7,184.00	3/17/2022
7.396.0	6.711.9	SAND FRAC; 7,365.0-7,549.0; 3/16/2022		4	7,213.00	7,214.00	3/17/2022
7.607.9	6.713.7	SAND FRAC; 7,578.0-7,760.0; 3/15/2022		4	7,243.00	7,244.00	3/17/2022
7.792.0	6.715.0	SAND FRAC; 7,791.0-7,971.0; 3/15/2022		4	7,274.00	7,275.00	3/17/2022
8.003.9	6.717.2	SAND FRAC; 8,004.0-8,187.0; 3/14/2022		4	7,300.00	7,301.00	3/17/2022
8.187.0	6.720.1	SAND FRAC; 8,218.0-8,400.0; 3/14/2022		4	7,335.00	7,336.00	3/17/2022
8.399.0	6.720.7	SAND FRAC; 8,429.0-8,613.0; 3/13/2022		4	7,365.00	7,366.00	3/16/2022
8.585.0	6.722.9	SAND FRAC; 8,445.0-8,629.0; 3/12/2022		4	7,395.00	7,396.00	3/16/2022
8.794.0	6.724.7	SAND FRAC; 8,645.0-8,826.0; 3/12/2022		4	7,426.00	7,427.00	3/16/2022
8.978.0	6.725.8	SAND FRAC; 8,645.0-8,826.0; 3/12/2022		4	7,456.00	7,457.00	3/16/2022
9.190.0	6.723.2	SAND FRAC; 8,855.0-9,039.0; 3/12/2022		4	7,487.00	7,488.00	3/16/2022
9.373.0	6.721.2	SAND FRAC; 9,068.0-9,252.0; 3/11/2022		4	7,517.00	7,518.00	3/16/2022
9.585.0	6.720.1	SAND FRAC; 9,281.0-9,465.0; 3/10/2022		4	7,548.00	7,549.00	3/16/2022
9.768.0	6.721.9	SAND FRAC; 9,494.0-9,677.0; 3/10/2022		4	7,578.00	7,579.00	3/15/2022
9.984.9	6.722.7	SAND FRAC; 9,704.0-9,887.0; 3/9/2022		4	7,608.00	7,609.00	3/15/2022
10.165.0	6.722.9	SAND FRAC; 9,919.0-10,103.0; 3/9/2022		4	7,639.00	7,640.00	3/15/2022
10.376.0	6.725.3	SAND FRAC; 10,132.0-10,316.0; 3/8/2022		4	7,668.00	7,669.00	3/15/2022
10.528.9	6.727.3	SAND FRAC; 10,346.0-10,529.0; 3/7/2022		4	7,700.00	7,701.00	3/15/2022
10.741.1	6.730.3	SAND FRAC; 10,558.0-10,742.0; 3/7/2022		4	7,730.00	7,731.00	3/15/2022
10.923.9	6.732.3	SAND FRAC; 10,770.0-10,953.0; 3/6/2022		4	7,759.00	7,760.00	3/15/2022
11.133.9	6.734.0	SAND FRAC; 10,979.0-11,168.0; 3/6/2022		4	7,791.00	7,792.00	3/15/2022
11.320.9	6.734.9	SAND FRAC; 11,197.0-11,380.0; 3/5/2022		4	7,821.00	7,822.00	3/15/2022
11.530.8	6.735.3	SAND FRAC; 11,406.0-11,594.0; 3/4/2022		4	7,850.00	7,851.00	3/15/2022
11.714.9	6.735.2	SAND FRAC; 11,622.0-11,806.0; 3/4/2022		4	7,882.00	7,883.00	3/15/2022
11.926.8	6.735.9	SAND FRAC; 11,835.0-12,019.0; 3/3/2022		4	7,913.00	7,914.00	3/15/2022
12.109.9	6.736.9	SAND FRAC; 12,049.0-12,232.0; 3/2/2022		4	7,940.00	7,941.00	3/15/2022
12.324.1	6.737.8	SAND FRAC; 12,261.0-12,445.0; 3/2/2022		4	7,970.00	7,971.00	3/15/2022
12.504.9	6.739.0	SAND FRAC; 12,474.0-12,658.0; 3/1/2022		4	8,004.00	8,005.00	3/14/2022
12.716.9	6.740.3	SAND FRAC; 12,688.0-12,873.0; 2/28/2022		4	8,032.00	8,033.00	3/14/2022
12.899.9	6.740.8	SAND FRAC; 12,899.0-13,083.0; 2/28/2022		4	8,064.00	8,065.00	3/14/2022
13.111.9	6.740.9	SAND FRAC; 13,112.0-13,296.0; 2/27/2022		4	8,095.00	8,096.00	3/14/2022
13.295.9	6.740.6	SAND FRAC; 13,325.0-13,511.0; 2/26/2022		4	8,095.00	8,096.00	3/14/2022
13.509.8	6.741.0	SAND FRAC; 13,538.0-13,722.0; 2/26/2022		4	8,128.00	8,129.00	3/14/2022
13.694.9	6.740.5	SAND FRAC; 13,750.0-13,935.0; 2/25/2022		4	8,156.00	8,157.00	3/14/2022
13.873.0	6.740.3	SAND FRAC; 13,964.0-14,148.0; 2/25/2022		4	8,186.00	8,187.00	3/14/2022
14.056.1	6.740.5	SAND FRAC; 14,390.0-14,573.0; 2/21/2022		4	8,218.00	8,219.00	3/13/2022
14.268.0	6.740.5	SAND FRAC; 14,602.0-14,786.0; 2/21/2022		4	8,247.00	8,248.00	3/13/2022
14.451.1	6.740.4	SAND FRAC; 14,815.0-14,999.0; 2/20/2022		4	8,277.00	8,278.00	3/13/2022
14.663.1	6.740.4	SAND FRAC; 15,028.0-15,212.0; 2/19/2022		4	8,277.00	8,278.00	3/13/2022
14.847.1	6.740.3	SAND FRAC; 15,241.0-15,425.0; 2/19/2022		4	8,308.00	8,309.00	3/13/2022
15.059.1	6.740.4	SAND FRAC; 15,454.0-15,638.0; 2/18/2022		4	8,338.00	8,339.00	3/13/2022
15.242.1	6.740.8	SAND FRAC; 15,667.0-15,846.0; 2/18/2022		4	8,369.00	8,370.00	3/13/2022
15.454.1	6.741.7	SAND FRAC; 15,880.0-16,063.0; 2/17/2022		4	8,399.00	8,400.00	3/13/2022
15.638.1	6.742.7	SAND FRAC; 16,092.0-16,276.0; 2/16/2022		4	8,429.00	8,430.00	3/13/2022
15.845.1	6.743.4	SAND FRAC; 16,307.0-16,489.0; 2/15/2022		4	8,460.00	8,461.00	3/13/2022
16.033.1	6.743.4	SAND FRAC; 16,518.0-16,702.0; 2/14/2022		4	8,490.00	8,491.00	3/13/2022
16.245.1	6.744.6	SAND FRAC; 16,731.0-16,853.0; 2/14/2022		4	8,521.00	8,522.00	3/13/2022
16.428.1	6.744.8			4	8,551.00	8,552.00	3/13/2022
16.640.1	6.745.0			4	8,584.00	8,585.00	3/13/2022
16.824.1	6.745.6			4	8,612.00	8,613.00	3/13/2022
				4	8,645.00	8,646.00	3/12/2022
				4	8,673.00	8,674.00	3/12/2022
				4	8,703.00	8,704.00	3/12/2022
				4	8,734.00	8,735.00	3/12/2022
				4	8,764.00	8,765.00	3/12/2022
				4	8,794.00	8,795.00	3/12/2022
				4	8,825.00	8,826.00	3/12/2022
				4	8,855.00	8,856.00	3/12/2022
				4	8,885.00	8,886.00	3/12/2022
				4	8,916.00	8,917.00	3/12/2022
				4	8,946.00	8,947.00	3/12/2022

Well Name: REVELLE A34-768

HORIZONTAL, ORIGINAL HOLE, 4/14/2022 4:04:24 PM



Perforation Data		Sum of Entered Shot Total	Top (ftKB)	Btm (ftKB)	Date
Linked Zone	Bnch/St g				
NIOBRARA, ORIGINAL HOLE	NIO - B/...	4	8,977.00	8,978.00	3/12/2022
NIOBRARA, ORIGINAL HOLE	NIO - B/...	4	9,007.00	9,008.00	3/12/2022
NIOBRARA, ORIGINAL HOLE	NIO - B/...	4	9,038.00	9,039.00	3/12/2022
NIOBRARA, ORIGINAL HOLE	NIO - B/...	4	9,068.00	9,069.00	3/11/2022
NIOBRARA, ORIGINAL HOLE	NIO - B/...	4	9,098.00	9,099.00	3/11/2022
NIOBRARA, ORIGINAL HOLE	NIO - B/...	4	9,129.00	9,130.00	3/11/2022
NIOBRARA, ORIGINAL HOLE	NIO - B/...	4	9,159.00	9,160.00	3/11/2022
NIOBRARA, ORIGINAL HOLE	NIO - B/...	4	9,190.00	9,191.00	3/11/2022
NIOBRARA, ORIGINAL HOLE	NIO - B/...	4	9,220.00	9,221.00	3/11/2022
NIOBRARA, ORIGINAL HOLE	NIO - B/...	4	9,251.00	9,252.00	3/11/2022
NIOBRARA, ORIGINAL HOLE	NIO - B/...	4	9,281.00	9,282.00	3/10/2022
NIOBRARA, ORIGINAL HOLE	NIO - B/...	4	9,311.00	9,312.00	3/10/2022
NIOBRARA, ORIGINAL HOLE	NIO - B/...	4	9,342.00	9,343.00	3/10/2022
NIOBRARA, ORIGINAL HOLE	NIO - B/...	4	9,372.00	9,373.00	3/10/2022
NIOBRARA, ORIGINAL HOLE	NIO - B/...	4	9,403.00	9,404.00	3/10/2022
NIOBRARA, ORIGINAL HOLE	NIO - B/...	4	9,433.00	9,434.00	3/10/2022
NIOBRARA, ORIGINAL HOLE	NIO - B/...	4	9,464.00	9,465.00	3/10/2022
NIOBRARA, ORIGINAL HOLE	NIO - B/...	4	9,494.00	9,495.00	3/10/2022
NIOBRARA, ORIGINAL HOLE	NIO - B/...	4	9,522.00	9,523.00	3/10/2022
NIOBRARA, ORIGINAL HOLE	NIO - B/...	4	9,555.00	9,556.00	3/10/2022
NIOBRARA, ORIGINAL HOLE	NIO - B/...	4	9,585.00	9,586.00	3/10/2022
NIOBRARA, ORIGINAL HOLE	NIO - B/...	4	9,615.00	9,616.00	3/10/2022
NIOBRARA, ORIGINAL HOLE	NIO - B/...	4	9,646.00	9,647.00	3/10/2022
NIOBRARA, ORIGINAL HOLE	NIO - B/...	4	9,676.00	9,677.00	3/10/2022
NIOBRARA, ORIGINAL HOLE	NIO - B/...	4	9,704.00	9,705.00	3/9/2022
NIOBRARA, ORIGINAL HOLE	NIO - B/...	4	9,737.00	9,738.00	3/9/2022
NIOBRARA, ORIGINAL HOLE	NIO - B/...	4	9,767.00	9,768.00	3/9/2022
NIOBRARA, ORIGINAL HOLE	NIO - B/...	4	9,794.00	9,795.00	3/9/2022
NIOBRARA, ORIGINAL HOLE	NIO - B/...	4	9,828.00	9,829.00	3/9/2022
NIOBRARA, ORIGINAL HOLE	NIO - B/...	4	9,859.00	9,860.00	3/9/2022
NIOBRARA, ORIGINAL HOLE	NIO - B/...	4	9,886.00	9,887.00	3/9/2022
NIOBRARA, ORIGINAL HOLE	NIO - B/...	4	9,919.00	9,920.00	3/9/2022
NIOBRARA, ORIGINAL HOLE	NIO - B/...	4	9,950.00	9,951.00	3/9/2022
NIOBRARA, ORIGINAL HOLE	NIO - B/...	4	9,985.00	9,986.00	3/9/2022
NIOBRARA, ORIGINAL HOLE	NIO - B/...	4	10,011.00	10,012.00	3/9/2022
NIOBRARA, ORIGINAL HOLE	NIO - B/...	4	10,041.00	10,042.00	3/9/2022
NIOBRARA, ORIGINAL HOLE	NIO - B/...	4	10,074.00	10,075.00	3/9/2022
NIOBRARA, ORIGINAL HOLE	NIO - B/...	4	10,102.00	10,103.00	3/9/2022
NIOBRARA, ORIGINAL HOLE	NIO - B/...	4	10,132.00	10,133.00	3/8/2022
NIOBRARA, ORIGINAL HOLE	NIO - B/...	4	10,164.00	10,165.00	3/8/2022
NIOBRARA, ORIGINAL HOLE	NIO - B/...	4	10,193.00	10,194.00	3/8/2022
NIOBRARA, ORIGINAL HOLE	NIO - B/...	4	10,224.00	10,225.00	3/8/2022
NIOBRARA, ORIGINAL HOLE	NIO - B/...	4	10,254.00	10,255.00	3/8/2022
NIOBRARA, ORIGINAL HOLE	NIO - B/...	4	10,285.00	10,286.00	3/8/2022
NIOBRARA, ORIGINAL HOLE	NIO - B/...	4	10,315.00	10,316.00	3/8/2022
NIOBRARA, ORIGINAL HOLE	NIO - B/...	4	10,346.00	10,347.00	3/7/2022
NIOBRARA, ORIGINAL HOLE	NIO - B/...	4	10,376.00	10,377.00	3/7/2022
NIOBRARA, ORIGINAL HOLE	NIO - B/...	4	10,406.00	10,407.00	3/7/2022
NIOBRARA, ORIGINAL HOLE	NIO - B/...	4	10,436.00	10,437.00	3/7/2022
NIOBRARA, ORIGINAL HOLE	NIO - B/...	4	10,467.00	10,468.00	3/7/2022
NIOBRARA, ORIGINAL HOLE	NIO - B/...	4	10,497.00	10,498.00	3/7/2022
NIOBRARA, ORIGINAL HOLE	NIO - B/...	4	10,528.00	10,529.00	3/7/2022
NIOBRARA, ORIGINAL HOLE	NIO - B/...	4	10,558.00	10,559.00	3/7/2022
NIOBRARA, ORIGINAL HOLE	NIO - B/...	4	10,588.00	10,589.00	3/7/2022
NIOBRARA, ORIGINAL HOLE	NIO - B/...	4	10,619.00	10,620.00	3/7/2022
NIOBRARA, ORIGINAL HOLE	NIO - B/...	4	10,649.00	10,650.00	3/7/2022
NIOBRARA, ORIGINAL HOLE	NIO - B/...	4	10,680.00	10,681.00	3/7/2022
NIOBRARA, ORIGINAL HOLE	NIO - B/...	4	10,710.00	10,711.00	3/7/2022
NIOBRARA, ORIGINAL HOLE	NIO - B/...	4	10,741.00	10,742.00	3/7/2022
NIOBRARA, ORIGINAL HOLE	NIO - B/...	4	10,770.00	10,771.00	3/6/2022

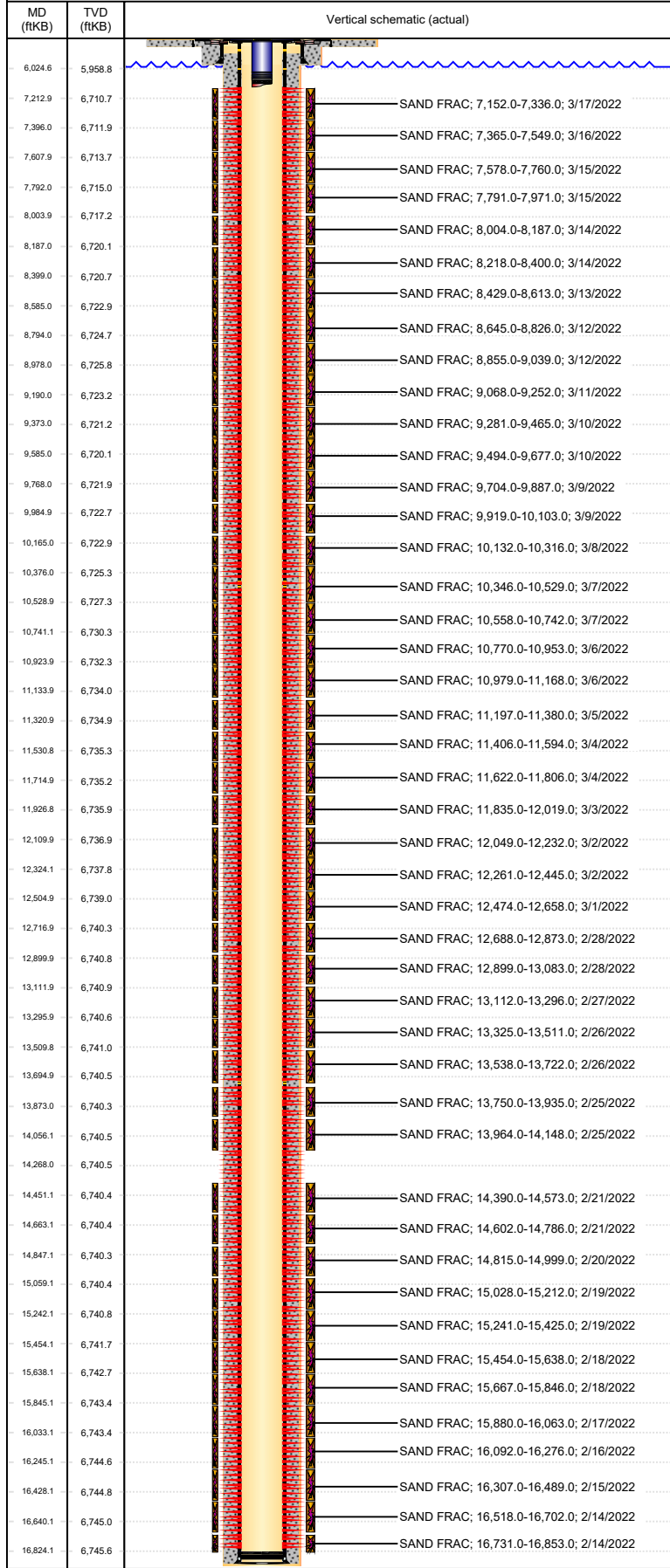
Well Name: REVELLE A34-768

HORIZONTAL, ORIGINAL HOLE, 4/14/2022 4:04:25 PM

MD (ftKB)		TVD (ftKB)		Vertical schematic (actual)	Perforation Data					
MD (ftKB)	TVD (ftKB)	Linked Zone	Bnch/St g		Sum of Entered Shot Total	Top (ftKB)	Btm (ftKB)	Date		
6.024.6	5,958.8				NIOBRARA, ORIGINAL HOLE	NIO - B/...	4	10,801.00	10,802.00	3/6/2022
7.212.9	6,710.7				NIOBRARA, ORIGINAL HOLE	NIO - B/...	4	10,832.00	10,833.00	3/6/2022
7.396.0	6,711.9				NIOBRARA, ORIGINAL HOLE	NIO - B/...	4	10,862.00	10,863.00	3/6/2022
7.607.9	6,713.7				NIOBRARA, ORIGINAL HOLE	NIO - B/...	4	10,893.00	10,894.00	3/6/2022
7.792.0	6,715.0				NIOBRARA, ORIGINAL HOLE	NIO - B/...	4	10,923.00	10,924.00	3/6/2022
8.003.9	6,717.2				NIOBRARA, ORIGINAL HOLE	NIO - B/...	4	10,952.00	10,953.00	3/6/2022
8.187.0	6,720.1				NIOBRARA, ORIGINAL HOLE	NIO - B/...	4	10,979.00	10,980.00	3/5/2022
8.399.0	6,720.7				NIOBRARA, ORIGINAL HOLE	NIO - B/...	4	11,014.00	11,015.00	3/5/2022
8.585.0	6,722.9				NIOBRARA, ORIGINAL HOLE	NIO - B/...	4	11,044.00	11,045.00	3/5/2022
8.794.0	6,724.7				NIOBRARA, ORIGINAL HOLE	NIO - B/...	4	11,075.00	11,076.00	3/5/2022
8.978.0	6,725.8				NIOBRARA, ORIGINAL HOLE	NIO - B/...	4	11,106.00	11,107.00	3/5/2022
9.190.0	6,723.2				NIOBRARA, ORIGINAL HOLE	NIO - B/...	4	11,134.00	11,135.00	3/5/2022
9.373.0	6,721.2				NIOBRARA, ORIGINAL HOLE	NIO - B/...	4	11,167.00	11,168.00	3/5/2022
9.585.0	6,720.1				NIOBRARA, ORIGINAL HOLE	NIO - B/...	4	11,197.00	11,198.00	3/5/2022
9.768.0	6,721.9				NIOBRARA, ORIGINAL HOLE	NIO - B/...	4	11,224.00	11,225.00	3/5/2022
9.984.9	6,722.7				NIOBRARA, ORIGINAL HOLE	NIO - B/...	4	11,257.00	11,258.00	3/5/2022
10.165.0	6,722.9				NIOBRARA, ORIGINAL HOLE	NIO - B/...	4	11,288.00	11,289.00	3/5/2022
10.376.0	6,725.3				NIOBRARA, ORIGINAL HOLE	NIO - B/...	4	11,320.00	11,321.00	3/5/2022
10.528.9	6,727.3				NIOBRARA, ORIGINAL HOLE	NIO - B/...	4	11,349.00	11,350.00	3/5/2022
10.741.1	6,730.3				NIOBRARA, ORIGINAL HOLE	NIO - B/...	4	11,379.00	11,380.00	3/5/2022
10.923.9	6,732.3				NIOBRARA, ORIGINAL HOLE	NIO - B/...	4	11,406.00	11,407.00	3/4/2022
11.133.9	6,734.0				NIOBRARA, ORIGINAL HOLE	NIO - B/...	4	11,440.00	11,441.00	3/4/2022
11.320.9	6,734.9				NIOBRARA, ORIGINAL HOLE	NIO - B/...	4	11,470.00	11,471.00	3/4/2022
11.530.8	6,735.3				NIOBRARA, ORIGINAL HOLE	NIO - B/...	4	11,503.00	11,504.00	3/4/2022
11.714.9	6,735.2				NIOBRARA, ORIGINAL HOLE	NIO - B/...	4	11,531.00	11,532.00	3/4/2022
11.926.8	6,735.9				NIOBRARA, ORIGINAL HOLE	NIO - B/...	4	11,562.00	11,563.00	3/4/2022
12.109.9	6,736.9				NIOBRARA, ORIGINAL HOLE	NIO - B/...	4	11,593.00	11,594.00	3/4/2022
12.324.1	6,737.8				NIOBRARA, ORIGINAL HOLE	NIO - B/...	4	11,622.00	11,623.00	3/3/2022
12.504.9	6,739.0				NIOBRARA, ORIGINAL HOLE	NIO - B/...	4	11,653.00	11,654.00	3/3/2022
12.716.9	6,740.3				NIOBRARA, ORIGINAL HOLE	NIO - B/...	4	11,685.00	11,686.00	3/3/2022
12.899.9	6,740.8				NIOBRARA, ORIGINAL HOLE	NIO - B/...	4	11,714.00	11,715.00	3/3/2022
13.111.9	6,740.9				NIOBRARA, ORIGINAL HOLE	NIO - B/...	4	11,744.00	11,745.00	3/3/2022
13.295.9	6,740.6				NIOBRARA, ORIGINAL HOLE	NIO - B/...	4	11,774.00	11,775.00	3/3/2022
13.509.8	6,741.0				NIOBRARA, ORIGINAL HOLE	NIO - B/...	4	11,777.00	11,778.00	3/3/2022
13.694.9	6,740.5				NIOBRARA, ORIGINAL HOLE	NIO - B/...	4	11,805.00	11,806.00	3/3/2022
13.873.0	6,740.3				NIOBRARA, ORIGINAL HOLE	NIO - B/...	4	11,835.00	11,836.00	3/2/2022
14.056.1	6,740.5				NIOBRARA, ORIGINAL HOLE	NIO - B/...	4	11,867.00	11,868.00	3/2/2022
14.268.0	6,740.5				NIOBRARA, ORIGINAL HOLE	NIO - B/...	4	11,896.00	11,897.00	3/2/2022
14.451.1	6,740.4				NIOBRARA, ORIGINAL HOLE	NIO - B/...	4	11,927.00	11,928.00	3/2/2022
14.663.1	6,740.4				NIOBRARA, ORIGINAL HOLE	NIO - B/...	4	11,957.00	11,958.00	3/2/2022
14.847.1	6,740.3				NIOBRARA, ORIGINAL HOLE	NIO - B/...	4	11,988.00	11,989.00	3/2/2022
15.059.1	6,740.4				NIOBRARA, ORIGINAL HOLE	NIO - B/...	4	12,018.00	12,019.00	3/2/2022
15.242.1	6,740.8				NIOBRARA, ORIGINAL HOLE	NIO - B/...	4	12,049.00	12,050.00	3/2/2022
15.454.1	6,741.7				NIOBRARA, ORIGINAL HOLE	NIO - B/...	4	12,078.00	12,079.00	3/2/2022
15.638.1	6,742.7				NIOBRARA, ORIGINAL HOLE	NIO - B/...	4	12,109.00	12,110.00	3/2/2022
15.845.1	6,743.4				NIOBRARA, ORIGINAL HOLE	NIO - B/...	4	12,140.00	12,141.00	3/2/2022
16.033.1	6,743.4				NIOBRARA, ORIGINAL HOLE	NIO - B/...	4	12,170.00	12,171.00	3/2/2022
16.245.1	6,744.6				NIOBRARA, ORIGINAL HOLE	NIO - B/...	4	12,200.00	12,201.00	3/2/2022
16.428.1	6,744.8				NIOBRARA, ORIGINAL HOLE	NIO - B/...	4	12,231.00	12,232.00	3/2/2022
16.640.1	6,745.0				NIOBRARA, ORIGINAL HOLE	NIO - B/...	4	12,261.00	12,262.00	3/2/2022
16.824.1	6,745.6				NIOBRARA, ORIGINAL HOLE	NIO - B/...	4	12,291.00	12,292.00	3/2/2022
					NIOBRARA, ORIGINAL HOLE	NIO - B/...	4	12,324.00	12,325.00	3/2/2022
					NIOBRARA, ORIGINAL HOLE	NIO - B/...	4	12,352.00	12,353.00	3/2/2022
					NIOBRARA, ORIGINAL HOLE	NIO - B/...	4	12,383.00	12,384.00	3/2/2022
					NIOBRARA, ORIGINAL HOLE	NIO - B/...	4	12,414.00	12,415.00	3/2/2022
					NIOBRARA, ORIGINAL HOLE	NIO - B/...	4	12,444.00	12,445.00	3/2/2022
					NIOBRARA, ORIGINAL HOLE	NIO - B/...	4	12,474.00	12,475.00	3/1/2022
					NIOBRARA, ORIGINAL HOLE	NIO - B/...	4	12,504.00	12,505.00	3/1/2022
					NIOBRARA, ORIGINAL HOLE	NIO - B/...	4	12,535.00	12,536.00	3/1/2022
					NIOBRARA, ORIGINAL HOLE	NIO - B/...	4	12,565.00	12,566.00	3/1/2022
					NIOBRARA, ORIGINAL HOLE	NIO - B/...	4	12,598.00	12,599.00	3/1/2022

Well Name: REVELLE A34-768

HORIZONTAL, ORIGINAL HOLE, 4/14/2022 4:04:25 PM



Perforation Data		Sum of Entered Shot Total	Top (ftKB)	Btm (ftKB)	Date
Linked Zone	Bnch/St g				
NIOBRARA, ORIGINAL HOLE	NIO - B/...	4	12,628.00	12,629.00	3/1/2022
NIOBRARA, ORIGINAL HOLE	NIO - B/...	4	12,657.00	12,658.00	3/1/2022
NIOBRARA, ORIGINAL HOLE	NIO - B/...	4	12,688.00	12,689.00	2/28/2022
NIOBRARA, ORIGINAL HOLE	NIO - B/...	4	12,717.00	12,718.00	2/28/2022
NIOBRARA, ORIGINAL HOLE	NIO - B/...	4	12,748.00	12,749.00	2/28/2022
NIOBRARA, ORIGINAL HOLE	NIO - B/...	4	12,780.00	12,781.00	2/28/2022
NIOBRARA, ORIGINAL HOLE	NIO - B/...	4	12,809.00	12,810.00	2/28/2022
NIOBRARA, ORIGINAL HOLE	NIO - B/...	4	12,839.00	12,840.00	2/28/2022
NIOBRARA, ORIGINAL HOLE	NIO - B/...	4	12,872.00	12,873.00	2/28/2022
NIOBRARA, ORIGINAL HOLE	NIO - B/...	4	12,899.00	12,900.00	2/27/2022
NIOBRARA, ORIGINAL HOLE	NIO - B/...	4	12,930.00	12,931.00	2/27/2022
NIOBRARA, ORIGINAL HOLE	NIO - B/...	4	12,960.00	12,961.00	2/27/2022
NIOBRARA, ORIGINAL HOLE	NIO - B/...	4	12,991.00	12,992.00	2/27/2022
NIOBRARA, ORIGINAL HOLE	NIO - B/...	4	13,021.00	13,022.00	2/27/2022
NIOBRARA, ORIGINAL HOLE	NIO - B/...	4	13,052.00	13,053.00	2/27/2022
NIOBRARA, ORIGINAL HOLE	NIO - B/...	4	13,082.00	13,083.00	2/27/2022
NIOBRARA, ORIGINAL HOLE	NIO - B/...	4	13,112.00	13,113.00	2/27/2022
NIOBRARA, ORIGINAL HOLE	NIO - B/...	4	13,143.00	13,144.00	2/27/2022
NIOBRARA, ORIGINAL HOLE	NIO - B/...	4	13,173.00	13,174.00	2/27/2022
NIOBRARA, ORIGINAL HOLE	NIO - B/...	4	13,204.00	13,205.00	2/27/2022
NIOBRARA, ORIGINAL HOLE	NIO - B/...	4	13,236.00	13,237.00	2/27/2022
NIOBRARA, ORIGINAL HOLE	NIO - B/...	4	13,265.00	13,266.00	2/27/2022
NIOBRARA, ORIGINAL HOLE	NIO - B/...	4	13,295.00	13,296.00	2/27/2022
NIOBRARA, ORIGINAL HOLE	NIO - B/...	4	13,325.00	13,326.00	2/26/2022
NIOBRARA, ORIGINAL HOLE	NIO - B/...	4	13,356.00	13,357.00	2/26/2022
NIOBRARA, ORIGINAL HOLE	NIO - B/...	4	13,386.00	13,387.00	2/26/2022
NIOBRARA, ORIGINAL HOLE	NIO - B/...	4	13,419.00	13,420.00	2/26/2022
NIOBRARA, ORIGINAL HOLE	NIO - B/...	4	13,447.00	13,448.00	2/26/2022
NIOBRARA, ORIGINAL HOLE	NIO - B/...	4	13,478.00	13,479.00	2/26/2022
NIOBRARA, ORIGINAL HOLE	NIO - B/...	4	13,510.00	13,511.00	2/26/2022
NIOBRARA, ORIGINAL HOLE	NIO - B/...	4	13,538.00	13,539.00	2/26/2022
NIOBRARA, ORIGINAL HOLE	NIO - B/...	4	13,569.00	13,570.00	2/26/2022
NIOBRARA, ORIGINAL HOLE	NIO - B/...	4	13,605.00	13,606.00	2/26/2022
NIOBRARA, ORIGINAL HOLE	NIO - B/...	4	13,630.00	13,631.00	2/26/2022
NIOBRARA, ORIGINAL HOLE	NIO - B/...	4	13,660.00	13,661.00	2/26/2022
NIOBRARA, ORIGINAL HOLE	NIO - B/...	4	13,694.00	13,695.00	2/26/2022
NIOBRARA, ORIGINAL HOLE	NIO - B/...	4	13,721.00	13,722.00	2/26/2022
NIOBRARA, ORIGINAL HOLE	NIO - B/...	4	13,750.00	13,751.00	2/25/2022
NIOBRARA, ORIGINAL HOLE	NIO - B/...	4	13,781.00	13,782.00	2/25/2022
NIOBRARA, ORIGINAL HOLE	NIO - B/...	4	13,812.00	13,813.00	2/25/2022
NIOBRARA, ORIGINAL HOLE	NIO - B/...	4	13,842.00	13,843.00	2/25/2022
NIOBRARA, ORIGINAL HOLE	NIO - B/...	4	13,873.00	13,874.00	2/25/2022
NIOBRARA, ORIGINAL HOLE	NIO - B/...	4	13,903.00	13,904.00	2/25/2022
NIOBRARA, ORIGINAL HOLE	NIO - B/...	4	13,934.00	13,935.00	2/25/2022
NIOBRARA, ORIGINAL HOLE	NIO - B/...	4	13,964.00	13,965.00	2/24/2022
NIOBRARA, ORIGINAL HOLE	NIO - B/...	4	13,994.00	13,995.00	2/24/2022
NIOBRARA, ORIGINAL HOLE	NIO - B/...	4	14,025.00	14,026.00	2/24/2022
NIOBRARA, ORIGINAL HOLE	NIO - B/...	4	14,055.00	14,056.00	2/24/2022
NIOBRARA, ORIGINAL HOLE	NIO - B/...	4	14,086.00	14,087.00	2/24/2022
NIOBRARA, ORIGINAL HOLE	NIO - B/...	4	14,116.00	14,117.00	2/24/2022
NIOBRARA, ORIGINAL HOLE	NIO - B/...	4	14,147.00	14,148.00	2/24/2022
NIOBRARA, ORIGINAL HOLE	NIO - B/...	4	14,177.00	14,178.00	2/22/2022
NIOBRARA, ORIGINAL HOLE	NIO - B/...	4	14,207.00	14,208.00	2/22/2022
NIOBRARA, ORIGINAL HOLE	NIO - B/...	4	14,238.00	14,239.00	2/22/2022
NIOBRARA, ORIGINAL HOLE	NIO - B/...	4	14,268.00	14,269.00	2/22/2022
NIOBRARA, ORIGINAL HOLE	NIO - B/...	4	14,299.00	14,300.00	2/22/2022
NIOBRARA, ORIGINAL HOLE	NIO - B/...	4	14,329.00	14,330.00	2/22/2022
NIOBRARA, ORIGINAL HOLE	NIO - B/...	4	14,360.00	14,361.00	2/22/2022
NIOBRARA, ORIGINAL HOLE	NIO - B/...	4	14,390.00	14,391.00	2/21/2022
NIOBRARA, ORIGINAL HOLE	NIO - B/...	4	14,420.00	14,421.00	2/21/2022

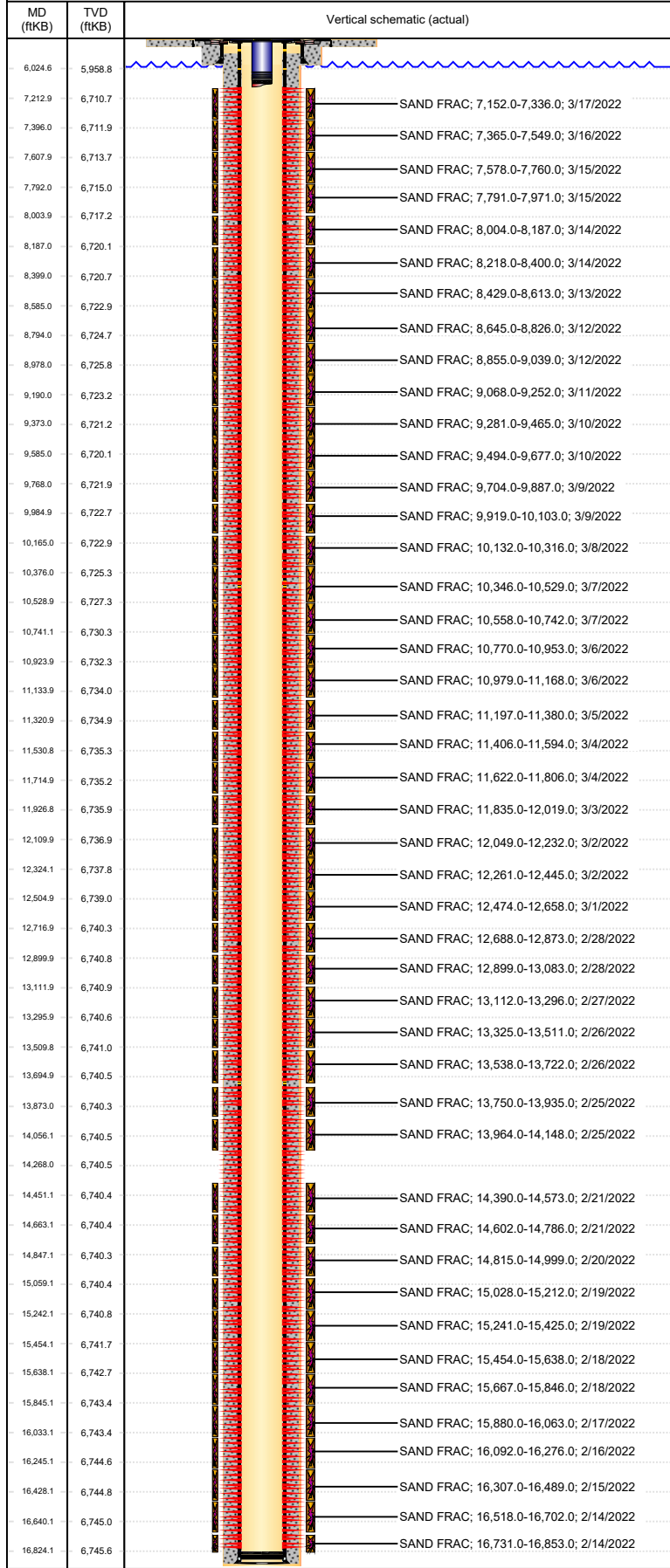
Well Name: REVELLE A34-768

HORIZONTAL, ORIGINAL HOLE, 4/14/2022 4:04:26 PM

MD (ftKB)		TVD (ftKB)		Vertical schematic (actual)	Perforation Data					
MD (ftKB)	TVD (ftKB)	Linked Zone	Bnch/St g		Sum of Entered Shot Total	Top (ftKB)	Btm (ftKB)	Date		
6.024.6	5,958.8				NIOBRARA, ORIGINAL HOLE	NIO - B/...	4	14,450.00	14,451.00	2/21/2022
7.212.9	6,710.7				NIOBRARA, ORIGINAL HOLE	NIO - B/...	4	14,481.00	14,482.00	2/21/2022
7.396.0	6,711.9			SAND FRAC; 7,152.0-7,336.0; 3/17/2022	NIOBRARA, ORIGINAL HOLE	NIO - B/...	4	14,511.00	14,512.00	2/21/2022
7.607.9	6,713.7			SAND FRAC; 7,365.0-7,549.0; 3/16/2022	NIOBRARA, ORIGINAL HOLE	NIO - B/...	4	14,545.00	14,546.00	2/21/2022
7.792.0	6,715.0			SAND FRAC; 7,578.0-7,760.0; 3/15/2022	NIOBRARA, ORIGINAL HOLE	NIO - B/...	4	14,572.00	14,573.00	2/21/2022
8.003.9	6,717.2			SAND FRAC; 7,791.0-7,971.0; 3/15/2022	NIOBRARA, ORIGINAL HOLE	NIO - B/...	4	14,602.00	14,603.00	2/21/2022
8.187.0	6,720.1			SAND FRAC; 8,004.0-8,187.0; 3/14/2022	NIOBRARA, ORIGINAL HOLE	NIO - B/...	4	14,633.00	14,634.00	2/21/2022
8.399.0	6,720.7			SAND FRAC; 8,218.0-8,400.0; 3/14/2022	NIOBRARA, ORIGINAL HOLE	NIO - B/...	4	14,663.00	14,664.00	2/21/2022
8.585.0	6,722.9			SAND FRAC; 8,429.0-8,613.0; 3/13/2022	NIOBRARA, ORIGINAL HOLE	NIO - B/...	4	14,694.00	14,695.00	2/21/2022
8.794.0	6,724.7			SAND FRAC; 8,645.0-8,826.0; 3/12/2022	NIOBRARA, ORIGINAL HOLE	NIO - B/...	4	14,724.00	14,725.00	2/21/2022
8.978.0	6,725.8			SAND FRAC; 8,855.0-9,039.0; 3/12/2022	NIOBRARA, ORIGINAL HOLE	NIO - B/...	4	14,755.00	14,756.00	2/21/2022
9.190.0	6,723.2			SAND FRAC; 9,068.0-9,252.0; 3/11/2022	NIOBRARA, ORIGINAL HOLE	NIO - B/...	4	14,785.00	14,786.00	2/21/2022
9.373.0	6,721.2			SAND FRAC; 9,281.0-9,465.0; 3/10/2022	NIOBRARA, ORIGINAL HOLE	NIO - B/...	4	14,815.00	14,816.00	2/20/2022
9.585.0	6,720.1			SAND FRAC; 9,494.0-9,677.0; 3/10/2022	NIOBRARA, ORIGINAL HOLE	NIO - B/...	4	14,846.00	14,847.00	2/20/2022
9.768.0	6,721.9			SAND FRAC; 9,704.0-9,887.0; 3/9/2022	NIOBRARA, ORIGINAL HOLE	NIO - B/...	4	14,876.00	14,877.00	2/20/2022
9.984.9	6,722.7			SAND FRAC; 9,919.0-10,103.0; 3/9/2022	NIOBRARA, ORIGINAL HOLE	NIO - B/...	4	14,907.00	14,908.00	2/20/2022
10.165.0	6,722.9			SAND FRAC; 10,132.0-10,316.0; 3/8/2022	NIOBRARA, ORIGINAL HOLE	NIO - B/...	4	14,937.00	14,938.00	2/20/2022
10.376.0	6,725.3			SAND FRAC; 10,346.0-10,529.0; 3/7/2022	NIOBRARA, ORIGINAL HOLE	NIO - B/...	4	14,968.00	14,969.00	2/20/2022
10.528.9	6,727.3			SAND FRAC; 10,558.0-10,742.0; 3/7/2022	NIOBRARA, ORIGINAL HOLE	NIO - B/...	4	14,998.00	14,999.00	2/20/2022
10.741.1	6,730.3			SAND FRAC; 10,770.0-10,953.0; 3/6/2022	NIOBRARA, ORIGINAL HOLE	NIO - B/...	4	15,028.00	15,029.00	2/19/2022
10.923.9	6,732.3			SAND FRAC; 10,979.0-11,168.0; 3/6/2022	NIOBRARA, ORIGINAL HOLE	NIO - B/...	4	15,059.00	15,060.00	2/19/2022
11.133.9	6,734.0			SAND FRAC; 11,197.0-11,380.0; 3/5/2022	NIOBRARA, ORIGINAL HOLE	NIO - B/...	4	15,089.00	15,090.00	2/19/2022
11.320.9	6,734.9			SAND FRAC; 11,406.0-11,594.0; 3/4/2022	NIOBRARA, ORIGINAL HOLE	NIO - B/...	4	15,120.00	15,121.00	2/19/2022
11.530.8	6,735.3			SAND FRAC; 11,622.0-11,806.0; 3/4/2022	NIOBRARA, ORIGINAL HOLE	NIO - B/...	4	15,150.00	15,151.00	2/19/2022
11.714.9	6,735.2			SAND FRAC; 11,835.0-12,019.0; 3/3/2022	NIOBRARA, ORIGINAL HOLE	NIO - B/...	4	15,181.00	15,182.00	2/19/2022
11.926.8	6,735.9			SAND FRAC; 12,049.0-12,232.0; 3/2/2022	NIOBRARA, ORIGINAL HOLE	NIO - B/...	4	15,211.00	15,212.00	2/19/2022
12.109.9	6,736.9			SAND FRAC; 12,261.0-12,445.0; 3/2/2022	NIOBRARA, ORIGINAL HOLE	NIO - B/...	4	15,241.00	15,242.00	2/19/2022
12.324.1	6,737.8			SAND FRAC; 12,474.0-12,658.0; 3/1/2022	NIOBRARA, ORIGINAL HOLE	NIO - B/...	4	15,271.00	15,272.00	2/19/2022
12.504.9	6,739.0			SAND FRAC; 12,688.0-12,873.0; 2/28/2022	NIOBRARA, ORIGINAL HOLE	NIO - B/...	4	15,302.00	15,303.00	2/19/2022
12.716.9	6,740.3			SAND FRAC; 12,899.0-13,083.0; 2/28/2022	NIOBRARA, ORIGINAL HOLE	NIO - B/...	4	15,332.00	15,333.00	2/19/2022
12.899.9	6,740.8			SAND FRAC; 13,112.0-13,296.0; 2/27/2022	NIOBRARA, ORIGINAL HOLE	NIO - B/...	4	15,363.00	15,364.00	2/19/2022
13.111.9	6,740.9			SAND FRAC; 13,325.0-13,511.0; 2/26/2022	NIOBRARA, ORIGINAL HOLE	NIO - B/...	4	15,393.00	15,394.00	2/19/2022
13.295.9	6,740.6			SAND FRAC; 13,538.0-13,722.0; 2/26/2022	NIOBRARA, ORIGINAL HOLE	NIO - B/...	4	15,424.00	15,425.00	2/19/2022
13.509.8	6,741.0			SAND FRAC; 13,750.0-13,935.0; 2/25/2022	NIOBRARA, ORIGINAL HOLE	NIO - B/...	4	15,454.00	15,455.00	2/18/2022
13.694.9	6,740.5			SAND FRAC; 13,964.0-14,148.0; 2/25/2022	NIOBRARA, ORIGINAL HOLE	NIO - B/...	4	15,484.00	15,485.00	2/18/2022
13.873.0	6,740.3			SAND FRAC; 14,390.0-14,573.0; 2/21/2022	NIOBRARA, ORIGINAL HOLE	NIO - B/...	4	15,515.00	15,516.00	2/18/2022
14.056.1	6,740.5			SAND FRAC; 14,602.0-14,786.0; 2/21/2022	NIOBRARA, ORIGINAL HOLE	NIO - B/...	4	15,545.00	15,546.00	2/18/2022
14.268.0	6,740.5			SAND FRAC; 14,815.0-14,999.0; 2/20/2022	NIOBRARA, ORIGINAL HOLE	NIO - B/...	4	15,576.00	15,577.00	2/18/2022
14.451.1	6,740.4			SAND FRAC; 15,028.0-15,212.0; 2/19/2022	NIOBRARA, ORIGINAL HOLE	NIO - B/...	4	15,606.00	15,607.00	2/18/2022
14.663.1	6,740.4			SAND FRAC; 15,241.0-15,425.0; 2/19/2022	NIOBRARA, ORIGINAL HOLE	NIO - B/...	4	15,637.00	15,638.00	2/18/2022
14.847.1	6,740.3			SAND FRAC; 15,454.0-15,638.0; 2/18/2022	NIOBRARA, ORIGINAL HOLE	NIO - B/...	4	15,667.00	15,668.00	2/17/2022
15.059.1	6,740.4			SAND FRAC; 15,667.0-15,846.0; 2/18/2022	NIOBRARA, ORIGINAL HOLE	NIO - B/...	4	15,697.00	15,698.00	2/17/2022
15.242.1	6,740.8			SAND FRAC; 15,880.0-16,063.0; 2/17/2022	NIOBRARA, ORIGINAL HOLE	NIO - B/...	4	15,728.00	15,729.00	2/17/2022
15.454.1	6,741.7			SAND FRAC; 16,092.0-16,276.0; 2/16/2022	NIOBRARA, ORIGINAL HOLE	NIO - B/...	4	15,758.00	15,759.00	2/17/2022
15.638.1	6,742.7			SAND FRAC; 16,307.0-16,489.0; 2/15/2022	NIOBRARA, ORIGINAL HOLE	NIO - B/...	4	15,789.00	15,790.00	2/17/2022
15.845.1	6,743.4			SAND FRAC; 16,518.0-16,702.0; 2/14/2022	NIOBRARA, ORIGINAL HOLE	NIO - B/...	4	15,819.00	15,820.00	2/17/2022
16.033.1	6,743.4			SAND FRAC; 16,731.0-16,853.0; 2/14/2022	NIOBRARA, ORIGINAL HOLE	NIO - B/...	4	15,845.00	15,846.00	2/17/2022
16.245.1	6,744.6				NIOBRARA, ORIGINAL HOLE	NIO - B/...	4	15,880.00	15,881.00	2/17/2022
16.428.1	6,744.8				NIOBRARA, ORIGINAL HOLE	NIO - B/...	4	15,910.00	15,911.00	2/17/2022
16.640.1	6,745.0				NIOBRARA, ORIGINAL HOLE	NIO - B/...	4	15,938.00	15,939.00	2/17/2022
16.824.1	6,745.6				NIOBRARA, ORIGINAL HOLE	NIO - B/...	4	15,971.00	15,972.00	2/17/2022
					NIOBRARA, ORIGINAL HOLE	NIO - B/...	4	16,002.00	16,003.00	2/17/2022
					NIOBRARA, ORIGINAL HOLE	NIO - B/...	4	16,032.00	16,033.00	2/17/2022
					NIOBRARA, ORIGINAL HOLE	NIO - B/...	4	16,062.00	16,063.00	2/17/2022
					NIOBRARA, ORIGINAL HOLE	NIO - B/...	4	16,092.00	16,093.00	2/16/2022
					NIOBRARA, ORIGINAL HOLE	NIO - B/...	4	16,123.00	16,124.00	2/16/2022
					NIOBRARA, ORIGINAL HOLE	NIO - B/...	4	16,153.00	16,154.00	2/16/2022
					NIOBRARA, ORIGINAL HOLE	NIO - B/...	4	16,184.00	16,185.00	2/16/2022
					NIOBRARA, ORIGINAL HOLE	NIO - B/...	4	16,214.00	16,215.00	2/16/2022
					NIOBRARA, ORIGINAL HOLE	NIO - B/...	4	16,245.00	16,246.00	2/16/2022

Well Name: REVELLE A34-768

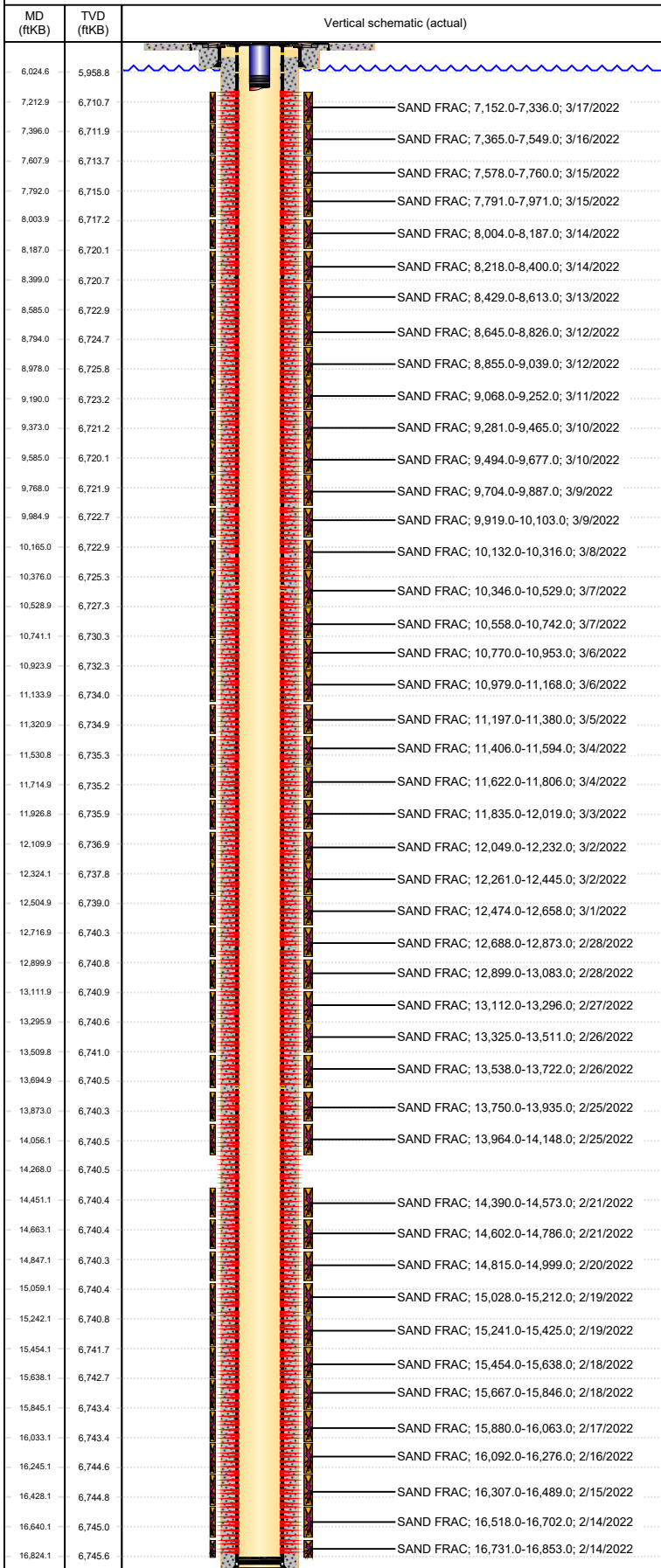
HORIZONTAL, ORIGINAL HOLE, 4/14/2022 4:04:26 PM



Perforation Data					
Linked Zone	Bnch/St g	Sum of Entered Shot Total	Top (ftKB)	Btm (ftKB)	Date
NIOBRARA, ORIGINAL HOLE	NIO - B/...	4	16,275.00	16,276.00	2/16/2022
NIOBRARA, ORIGINAL HOLE	NIO - C...	4	16,307.00	16,308.00	2/14/2022
NIOBRARA, ORIGINAL HOLE	NIO - C...	4	16,336.00	16,337.00	2/14/2022
NIOBRARA, ORIGINAL HOLE	NIO - C...	4	16,366.00	16,367.00	2/14/2022
NIOBRARA, ORIGINAL HOLE	NIO - C...	4	16,397.00	16,398.00	2/14/2022
NIOBRARA, ORIGINAL HOLE	NIO - C...	4	16,427.00	16,428.00	2/14/2022
NIOBRARA, ORIGINAL HOLE	NIO - C...	4	16,458.00	16,459.00	2/14/2022
NIOBRARA, ORIGINAL HOLE	NIO - C...	4	16,488.00	16,489.00	2/14/2022
NIOBRARA, ORIGINAL HOLE	NIO - C...	4	16,518.00	16,519.00	2/14/2022
NIOBRARA, ORIGINAL HOLE	NIO - C...	4	16,549.00	16,550.00	2/14/2022
NIOBRARA, ORIGINAL HOLE	NIO - C...	4	16,581.00	16,582.00	2/14/2022
NIOBRARA, ORIGINAL HOLE	NIO - C...	4	16,610.00	16,611.00	2/14/2022
NIOBRARA, ORIGINAL HOLE	NIO - C...	4	16,640.00	16,641.00	2/14/2022
NIOBRARA, ORIGINAL HOLE	NIO - C...	4	16,672.00	16,673.00	2/14/2022
NIOBRARA, ORIGINAL HOLE	NIO - C...	4	16,701.00	16,702.00	2/14/2022
NIOBRARA, ORIGINAL HOLE	NIO - C...	4	16,731.00	16,732.00	2/13/2022
NIOBRARA, ORIGINAL HOLE	NIO - C...	4	16,762.00	16,763.00	2/13/2022
NIOBRARA, ORIGINAL HOLE	NIO - C...	4	16,792.00	16,793.00	2/13/2022
NIOBRARA, ORIGINAL HOLE	NIO - C...	4	16,823.00	16,824.00	2/13/2022
Total		1,276			
Stimulation Intervals					
Interval...	Start Date	Primary Job Type			Zone
1	2/14/2022	COMPLETION - ORIGINAL			NIOBRARA, ORIGINAL HOLE
Technical Result		Tech Result Details		Tech Result Note	
Success		According to Plan			
Comment					
FRAC NOTES ATTACHED					
Interval...	Start Date	Primary Job Type			Zone
2	2/14/2022	COMPLETION - ORIGINAL			NIOBRARA, ORIGINAL HOLE
Technical Result		Tech Result Details		Tech Result Note	
Success		According to Plan			
Comment					
FRAC NOTES ATTACHED					
Interval...	Start Date	Primary Job Type			Zone
3	2/15/2022	COMPLETION - ORIGINAL			NIOBRARA, ORIGINAL HOLE
Technical Result		Tech Result Details		Tech Result Note	
Success		According to Plan			
Comment					
FRAC NOTES ATTACHED					
Interval...	Start Date	Primary Job Type			Zone
4	2/16/2022	COMPLETION - ORIGINAL			NIOBRARA, ORIGINAL HOLE
Technical Result		Tech Result Details		Tech Result Note	
Success		According to Plan			
Comment					
FRAC NOTES ATTACHED					
Interval...	Start Date	Primary Job Type			Zone
5	2/17/2022	COMPLETION - ORIGINAL			NIOBRARA, ORIGINAL HOLE
Technical Result		Tech Result Details		Tech Result Note	
Success		According to Plan			
Comment					
FRAC NOTES ATTACHED					
Interval...	Start Date	Primary Job Type			Zone
6	2/18/2022	COMPLETION - ORIGINAL			NIOBRARA, ORIGINAL HOLE
Technical Result		Tech Result Details		Tech Result Note	
Success		According to Plan			
Comment					
FRAC NOTES ATTACHED					
Interval...	Start Date	Primary Job Type			Zone
7	2/18/2022	COMPLETION - ORIGINAL			NIOBRARA, ORIGINAL HOLE
Technical Result		Tech Result Details		Tech Result Note	
Success		According to Plan			
Comment					
FRAC NOTES ATTACHED					
Interval...	Start Date	Primary Job Type			Zone
8	2/19/2022	COMPLETION - ORIGINAL			NIOBRARA, ORIGINAL HOLE
Technical Result		Tech Result Details		Tech Result Note	
Success		According to Plan			
Comment					
FRAC NOTES ATTACHED					

Well Name: REVELLE A34-768

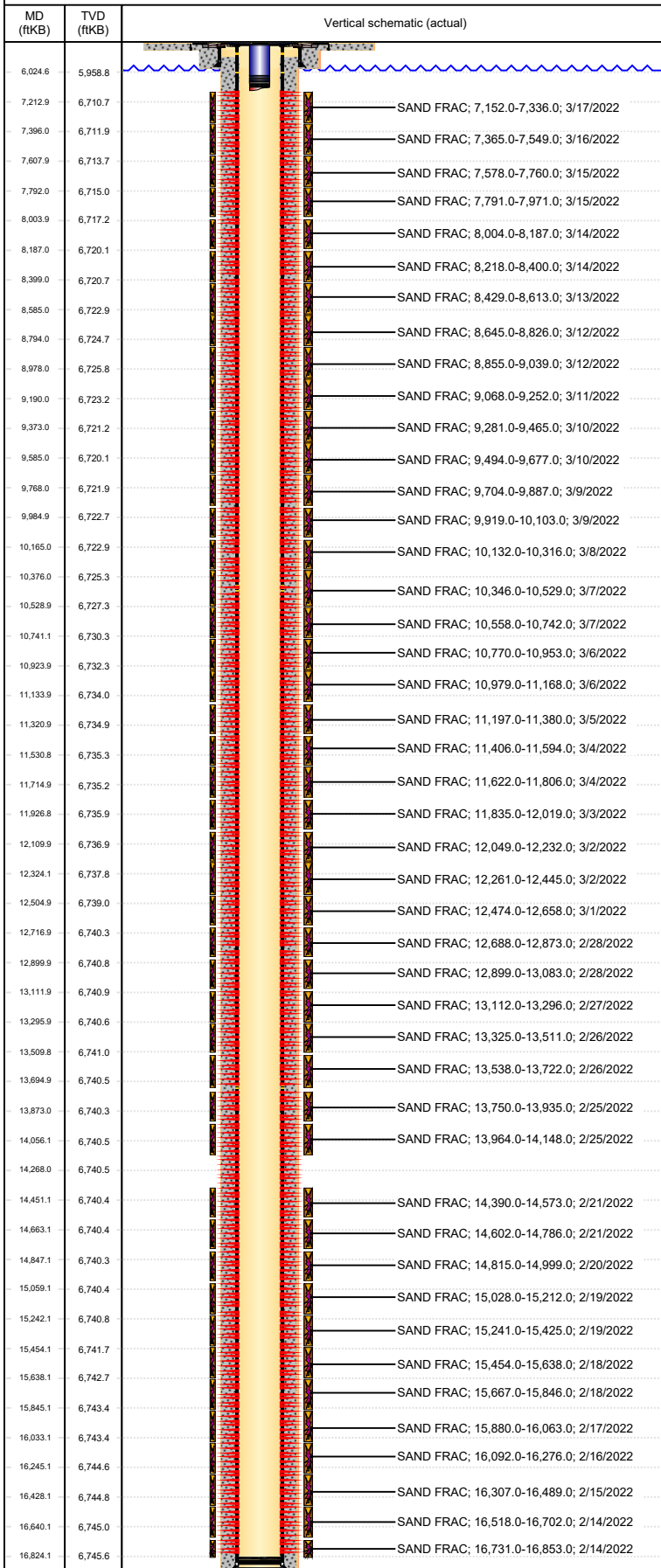
HORIZONTAL, ORIGINAL HOLE, 4/14/2022 4:04:26 PM



Stimulation Intervals			
Interval...	Start Date	Primary Job Type	Zone
9	2/19/2022	COMPLETION - ORIGINAL	NIOBRARA, ORIGINAL HOLE
Technical Result		Tech Result Details	Tech Result Note
Success		According to Plan	
Comment			
FRAC NOTES ATTACHED			
10	2/20/2022	COMPLETION - ORIGINAL	NIOBRARA, ORIGINAL HOLE
Technical Result		Tech Result Details	Tech Result Note
Success		According to Plan	
Comment			
FRAC NOTES ATTACHED			
11	2/21/2022	COMPLETION - ORIGINAL	NIOBRARA, ORIGINAL HOLE
Technical Result		Tech Result Details	Tech Result Note
Success		According to Plan	
Comment			
FRAC NOTES ATTACHED			
12	2/21/2022	COMPLETION - ORIGINAL	NIOBRARA, ORIGINAL HOLE
Technical Result		Tech Result Details	Tech Result Note
Success		According to Plan	
Comment			
FRAC NOTES ATTACHED			
14	2/25/2022	COMPLETION - ORIGINAL	NIOBRARA, ORIGINAL HOLE
Technical Result		Tech Result Details	Tech Result Note
Success		According to Plan	
Comment			
FRAC NOTES ATTACHED			
15	2/25/2022	COMPLETION - ORIGINAL	NIOBRARA, ORIGINAL HOLE
Technical Result		Tech Result Details	Tech Result Note
Success		According to Plan	
Comment			
FRAC NOTES ATTACHED			
16	2/26/2022	COMPLETION - ORIGINAL	NIOBRARA, ORIGINAL HOLE
Technical Result		Tech Result Details	Tech Result Note
Success		According to Plan	
Comment			
FRAC NOTES ATTACHED			
17	2/26/2022	COMPLETION - ORIGINAL	NIOBRARA, ORIGINAL HOLE
Technical Result		Tech Result Details	Tech Result Note
Success		According to Plan	
Comment			
FRAC NOTES ATTACHED			
18	2/27/2022	COMPLETION - ORIGINAL	NIOBRARA, ORIGINAL HOLE
Technical Result		Tech Result Details	Tech Result Note
Success		According to Plan	
Comment			
FRAC NOTES ATTACHED			
19	2/28/2022	COMPLETION - ORIGINAL	NIOBRARA, ORIGINAL HOLE
Technical Result		Tech Result Details	Tech Result Note
Success		According to Plan	
Comment			
FRAC NOTES ATTACHED			
20	2/28/2022	COMPLETION - ORIGINAL	NIOBRARA, ORIGINAL HOLE
Technical Result		Tech Result Details	Tech Result Note
Success		According to Plan	
Comment			
FRAC NOTES ATTACHED			
21	3/1/2022	COMPLETION - ORIGINAL	NIOBRARA, ORIGINAL HOLE
Technical Result		Tech Result Details	Tech Result Note
Success		According to Plan	
Comment			
FRAC NOTES ATTACHED			

Well Name: REVELLE A34-768

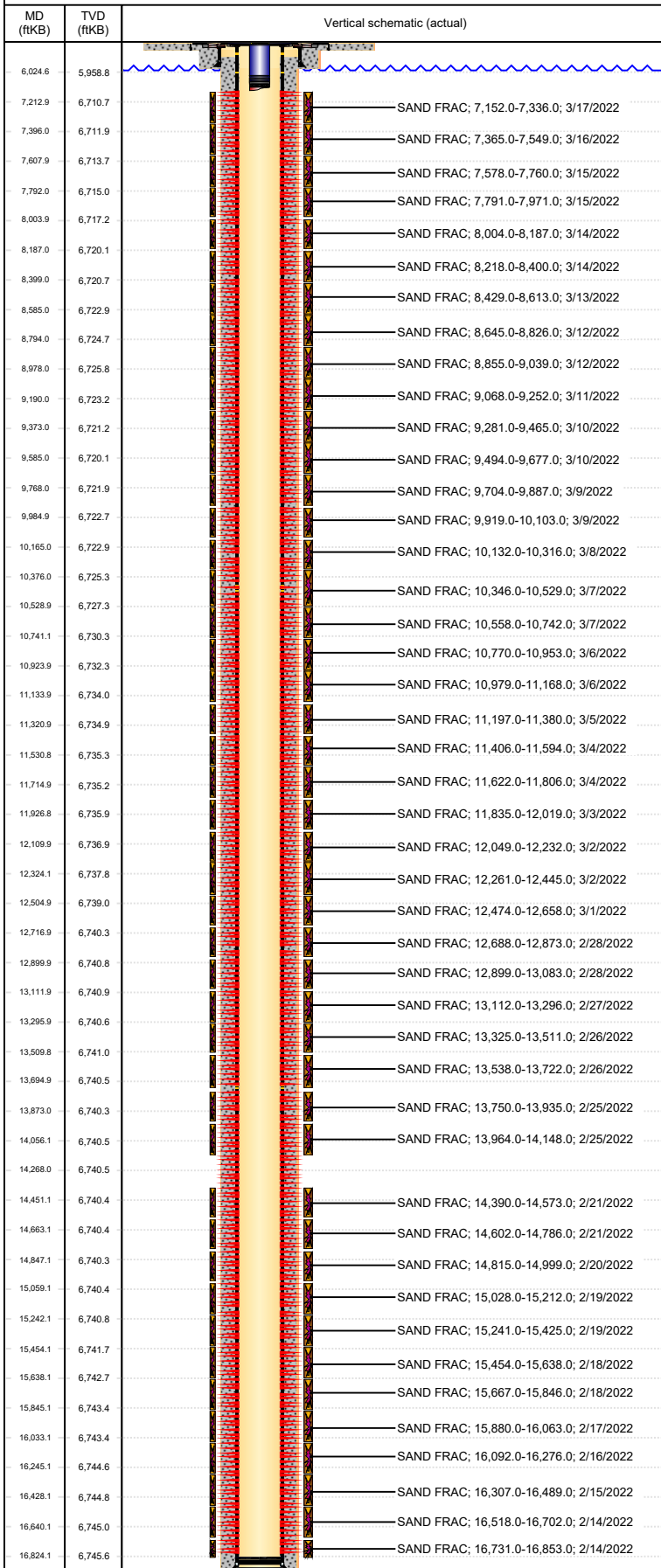
HORIZONTAL, ORIGINAL HOLE, 4/14/2022 4:04:27 PM



Stimulation Intervals			
Interval...	Start Date	Primary Job Type	Zone
22	3/2/2022	COMPLETION - ORIGINAL	NIOBRARA, ORIGINAL HOLE
Technical Result		Tech Result Details	Tech Result Note
Success		According to Plan	
Comment			
FRAC NOTES ATTACHED			
23	3/2/2022	COMPLETION - ORIGINAL	NIOBRARA, ORIGINAL HOLE
Technical Result		Tech Result Details	Tech Result Note
Success		According to Plan	
Comment			
FRAC NOTES ATTACHED			
24	3/3/2022	COMPLETION - ORIGINAL	NIOBRARA, ORIGINAL HOLE
Technical Result		Tech Result Details	Tech Result Note
Success		According to Plan	
Comment			
FRAC NOTES ATTACHED			
25	3/4/2022	COMPLETION - ORIGINAL	NIOBRARA, ORIGINAL HOLE
Technical Result		Tech Result Details	Tech Result Note
Success		According to Plan	
Comment			
FRAC NOTES ATTACHED			
26	3/4/2022	COMPLETION - ORIGINAL	NIOBRARA, ORIGINAL HOLE
Technical Result		Tech Result Details	Tech Result Note
Success		According to Plan	
Comment			
FRAC NOTES ATTACHED			
27	3/5/2022	COMPLETION - ORIGINAL	NIOBRARA, ORIGINAL HOLE
Technical Result		Tech Result Details	Tech Result Note
Success		According to Plan	
Comment			
FRAC NOTES ATTACHED			
28	3/6/2022	COMPLETION - ORIGINAL	NIOBRARA, ORIGINAL HOLE
Technical Result		Tech Result Details	Tech Result Note
Success		According to Plan	
Comment			
FRAC NOTES ATTACHED			
29	3/6/2022	COMPLETION - ORIGINAL	NIOBRARA, ORIGINAL HOLE
Technical Result		Tech Result Details	Tech Result Note
Success		According to Plan	
Comment			
FRAC NOTES ATTACHED			
30	3/7/2022	COMPLETION - ORIGINAL	NIOBRARA, ORIGINAL HOLE
Technical Result		Tech Result Details	Tech Result Note
Success		According to Plan	
Comment			
FRAC NOTES ATTACHED			
31	3/7/2022	COMPLETION - ORIGINAL	NIOBRARA, ORIGINAL HOLE
Technical Result		Tech Result Details	Tech Result Note
Success		According to Plan	
Comment			
FRAC NOTES ATTACHED			
32	3/8/2022	COMPLETION - ORIGINAL	NIOBRARA, ORIGINAL HOLE
Technical Result		Tech Result Details	Tech Result Note
Success		According to Plan	
Comment			
FRAC NOTES ATTACHED			
33	3/9/2022	COMPLETION - ORIGINAL	NIOBRARA, ORIGINAL HOLE
Technical Result		Tech Result Details	Tech Result Note
Success		According to Plan	
Comment			
FRAC NOTES ATTACHED			

Well Name: REVELLE A34-768

HORIZONTAL, ORIGINAL HOLE, 4/14/2022 4:04:27 PM



Stimulation Intervals			
Interval...	Start Date	Primary Job Type	Zone
34	3/9/2022	COMPLETION - ORIGINAL	NIOBRARA, ORIGINAL HOLE
Technical Result		Tech Result Details	Tech Result Note
Success		According to Plan	
Comment			
FRAC NOTES ATTACHED			
35	3/10/2022	COMPLETION - ORIGINAL	NIOBRARA, ORIGINAL HOLE
Technical Result		Tech Result Details	Tech Result Note
Success		According to Plan	
Comment			
FRAC NOTES ATTACHED			
36	3/10/2022	COMPLETION - ORIGINAL	NIOBRARA, ORIGINAL HOLE
Technical Result		Tech Result Details	Tech Result Note
Success		According to Plan	
Comment			
FRAC NOTES ATTACHED			
37	3/11/2022	COMPLETION - ORIGINAL	NIOBRARA, ORIGINAL HOLE
Technical Result		Tech Result Details	Tech Result Note
Success		According to Plan	
Comment			
FRAC NOTES ATTACHED			
38	3/12/2022	COMPLETION - ORIGINAL	NIOBRARA, ORIGINAL HOLE
Technical Result		Tech Result Details	Tech Result Note
Success		According to Plan	
Comment			
FRAC NOTES ATTACHED			
39	3/12/2022	COMPLETION - ORIGINAL	NIOBRARA, ORIGINAL HOLE
Technical Result		Tech Result Details	Tech Result Note
Success		According to Plan	
Comment			
FRAC NOTES ATTACHED			
40	3/13/2022	COMPLETION - ORIGINAL	NIOBRARA, ORIGINAL HOLE
Technical Result		Tech Result Details	Tech Result Note
Success		According to Plan	
Comment			
FRAC NOTES ATTACHED			
41	3/14/2022	COMPLETION - ORIGINAL	NIOBRARA, ORIGINAL HOLE
Technical Result		Tech Result Details	Tech Result Note
Success		According to Plan	
Comment			
FRAC NOTES ATTACHED			
42	3/14/2022	COMPLETION - ORIGINAL	NIOBRARA, ORIGINAL HOLE
Technical Result		Tech Result Details	Tech Result Note
Success		According to Plan	
Comment			
FRAC NOTES ATTACHED			
43	3/15/2022	COMPLETION - ORIGINAL	NIOBRARA, ORIGINAL HOLE
Technical Result		Tech Result Details	Tech Result Note
Success		According to Plan	
Comment			
FRAC NOTES ATTACHED			
44	3/15/2022	COMPLETION - ORIGINAL	NIOBRARA, ORIGINAL HOLE
Technical Result		Tech Result Details	Tech Result Note
Success		According to Plan	
Comment			
FRAC NOTES ATTACHED			
45	3/16/2022	COMPLETION - ORIGINAL	NIOBRARA, ORIGINAL HOLE
Technical Result		Tech Result Details	Tech Result Note
Success		According to Plan	
Comment			
FRAC NOTES ATTACHED			

Well Name: REVELLE A34-768

HORIZONTAL, ORIGINAL HOLE, 4/14/2022 4:04:28 PM

Stimulation Intervals

Interval... 46	Start Date 3/17/2022	Primary Job Type COMPLETION - ORIGINAL	Zone NIOBRARA, ORIGINAL HOLE
Technical Result Success		Tech Result Details	Tech Result Note
Comment FRAC NOTES ATTACHED			

