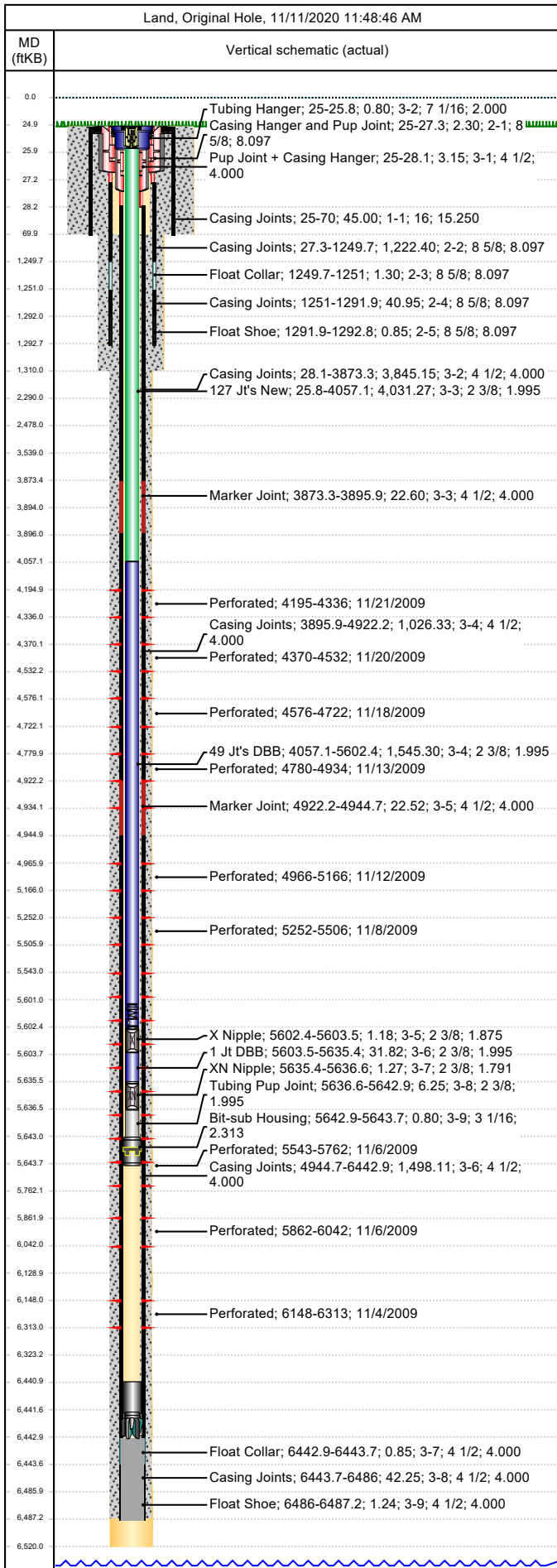




Wellbore Schematic

Well Name SKR-598-25-BV-20	Lease Chevron USA	Field Name Skinner Ridge	Business Unit Mid-Continent
-------------------------------	----------------------	-----------------------------	--------------------------------

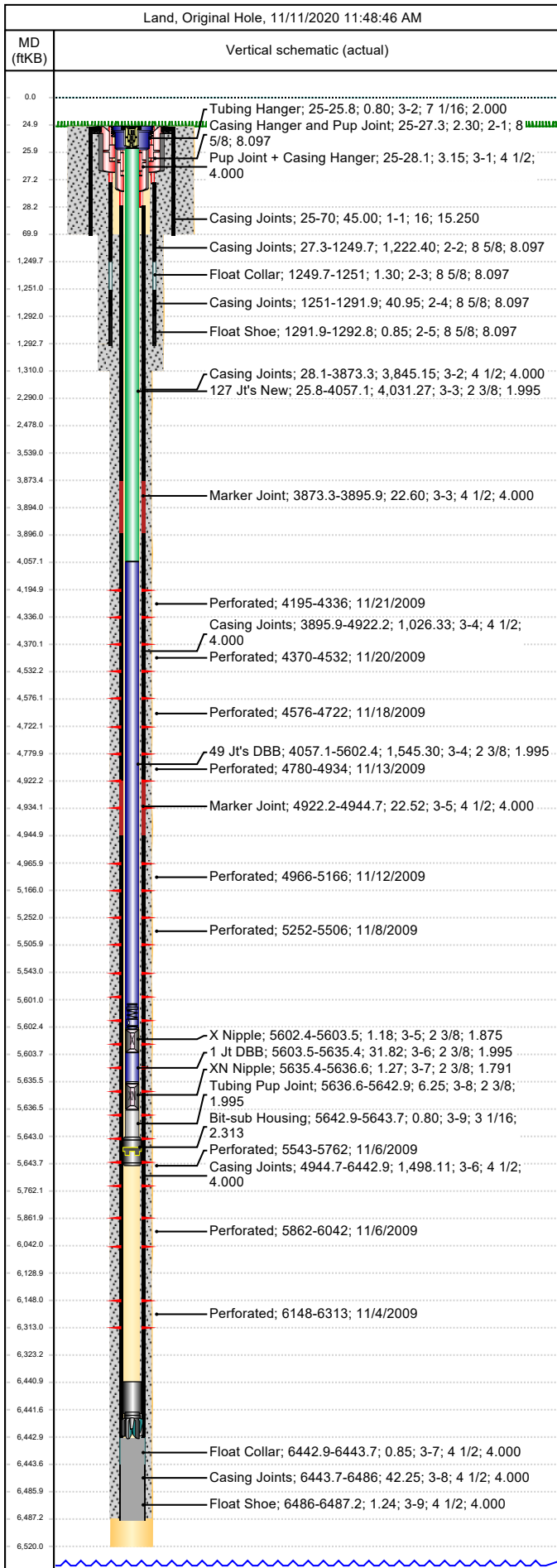


Job Details						
Job Category			Start Date		Rig/Unit End Date	
Casing Strings						
Csg Des	OD (in)	Wt/Len (lb/ft)	Grade	Top Thread	Set Depth (MD) (ftKB)	
Conductor	16	65.00	H-40		70	
Surface	8 5/8	24.00	J-55		1292.8	
Production Casing	4 1/2	11.60	N-80		6487.2	
Tubing Strings						
Tubing - Production set at 5,643.7ftKB on 5/15/2013 17:30						
Tubing Description		Run Date		String Length (ft)		Set Depth (MD) (ftKB)
Tubing - Production		5/15/2013		5,643.69		5,643.7
Item Des	Jts	OD (in)	Wt (lb/ft)	Grade	Len (ft)	Btm (ftKB)
KBGL					25.00	25.0
Tubing Hanger		7 1/16		4140	0.80	25.8
127 Jt's New	127	2 3/8	4.70	L-80	4,031.27	4,057.1
49 Jt's DBB	49	2 3/8	4.70	L-80	1,545.30	5,602.4
X Nipple		2 3/8			1.18	5,603.5
1 Jt DBB	1	2 3/8	4.70	L-80	31.82	5,635.4
XN Nipple		2 3/8			1.27	5,636.6
Tubing Pup Joint		2 3/8	4.70	L-80	6.25	5,642.9
Bit-sub Housing		3 1/16			0.80	5,643.7
Tubing Landed @						5,643.7
Perforations						
Date	Top (ftKB)	Btm (ftKB)	Shot Dens (shots/ft)	Entered Shot Total	Linked Zone	
11/21/2009	4,195.0	4,336.0	3.0	30	Mesa Verde - WMFK - Williams Fork, Original Hole	
11/20/2009	4,370.0	4,532.0	3.0	48	Mesa Verde - WMFK - Williams Fork, Original Hole	
11/18/2009	4,576.0	4,722.0	3.0	30	Mesa Verde - WMFK - Williams Fork, Original Hole	
11/13/2009	4,780.0	4,934.0	3.0	27	Mesa Verde - WMFK - Williams Fork, Original Hole	
11/12/2009	4,966.0	5,166.0	3.0	30	Mesa Verde - WMFK - Williams Fork, Original Hole	
11/8/2009	5,252.0	5,506.0	3.0	30	Mesa Verde - WMFK - Williams Fork, Original Hole	
11/6/2009	5,543.0	5,762.0	3.0	30	Mesa Verde - WMFK - Williams Fork, Original Hole	
11/6/2009	5,862.0	6,042.0	3.0	30	Mesa Verde - WMFK - Williams Fork, Original Hole	
11/4/2009	6,148.0	6,313.0	3.0	30	Mesa Verde - WMFK - Cameo Coal, Original Hole	
Other Strings						
Run Date	Pull Date	Set Depth (ftKB)	Com			
Other In Hole						
Des	Top (ftKB)	Btm (ftKB)	Run Date	Pull Date	Com	
Bear Claw Kill Plug	4,155.0	4,157.0	12/3/2009	12/9/2009	Solid composite plug	
Bumpedr Spring	4,307.0	4,308.0	6/16/2011	5/13/2013		
Bear Claw Frac Plug	4,359.0	4,361.0	11/21/2009	12/9/2009	Bio Ball composite, flow thru, frac, bridge plug	
Bear Claw Frac Plug	4,549.0	4,551.0	11/20/2009	12/9/2009	Bio Ball composite, flow thru, frac, bridge plug	
Bear Claw Frac Plug	4,759.0	4,761.0	11/18/2009	12/9/2009	Bio Ball composite, flow thru, frac, bridge plug	
Bear Claw Frac Plug	4,949.0	4,951.0	11/13/2009	12/9/2009	Bio Ball composite, flow thru, frac, bridge plug	
Bear Claw Frac Plug	5,209.0	5,211.0	11/12/2009	12/9/2009	Bio Ball composite, flow thru, frac, bridge plug	
Bear Claw Frac Plug	5,519.0	5,521.0	11/8/2009	12/9/2009	Bio Ball composite, flow thru, frac, bridge plug	
Fish, Rope socket	5,535.0	5,535.5	4/30/2010	5/4/2011	Fish top, 1 3/16" OD FN./Rope socket., 18' total equip.	



Wellbore Schematic

Well Name SKR-598-25-BV-20	Lease Chevron USA	Field Name Skinner Ridge	Business Unit Mid-Continent
-------------------------------	----------------------	-----------------------------	--------------------------------



Other In Hole					
Des	Top (ftKB)	Btm (ftKB)	Run Date	Pull Date	Com
Weight bar	5,535.5	5,538.5	4/30/2010	5/4/2011	
Swivel conn.	5,538.5	5,539.0	4/30/2010	5/4/2011	
Weight bar	5,539.0	5,544.0	4/30/2010	5/4/2011	
Spang jar	5,544.0	5,550.0	4/30/2010	5/4/2011	
GS pulling tool	5,550.0	5,551.0	4/30/2010	5/4/2011	
1.875 "X" plug	5,551.0	5,553.0	4/30/2010	5/4/2011	
Bumper Spring	5,601.2	5,602.4	7/1/2013		
Bear Claw Frac Plug	5,809.0	5,811.0	11/6/2009	12/10/2009	Bio Ball composite, flow thru, frac, bridge plug
Fill, 3/7/2013	6,050.0	6,288.0	3/7/2013	5/15/2013	
Bear Claw Frac Plug	6,109.0	6,111.0	11/6/2009	12/10/2009	Bio Ball composite, flow thru, frac, bridge plug
Fill, 6/16/2011	6,288.0	6,440.9	6/16/2011	5/15/2013	
Fill, 5/4/2011	6,440.0	6,443.0	5/4/2011	5/4/2011	Tag w/ slick-line,
Pumped Off Bit-sub	6,440.9	6,441.7	12/11/2009		
Mill	6,441.7	6,442.9	12/11/2009		
PBTD	6,442.9	6,487.2	6/13/2008		