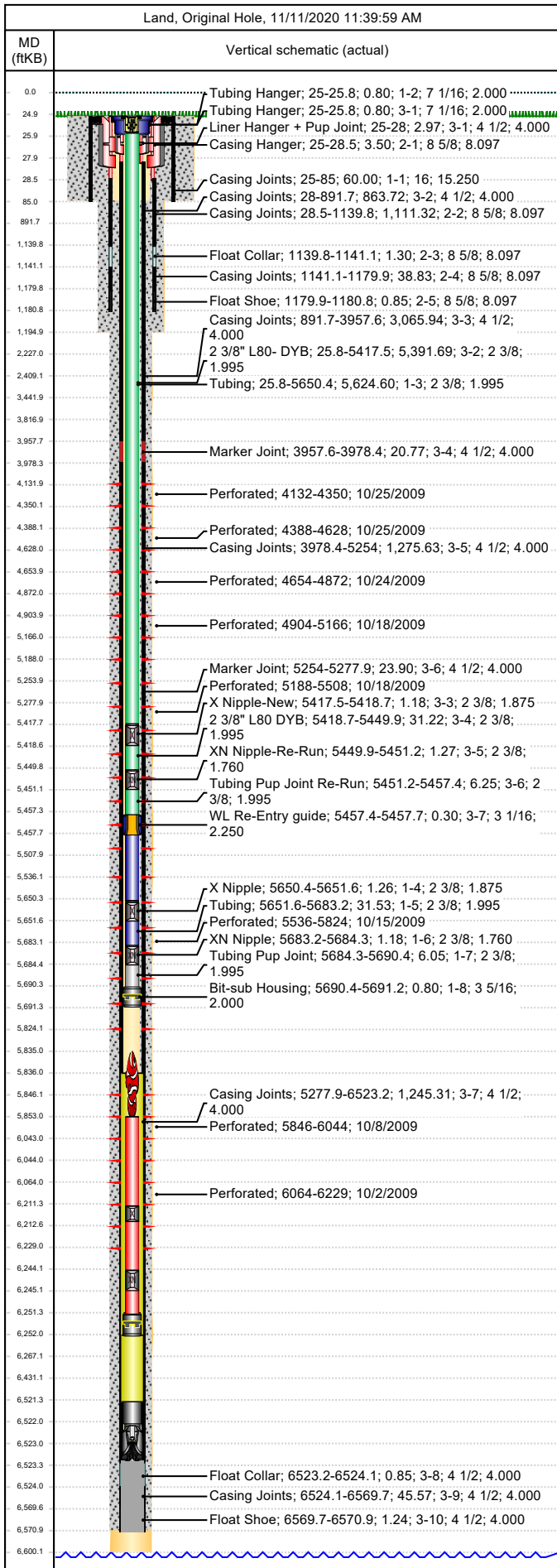




# Wellbore Schematic

Well Name SKR-598-25-BV-11	Lease Chevron USA	Field Name Skinner Ridge	Business Unit Mid-Continent
-------------------------------	----------------------	-----------------------------	--------------------------------

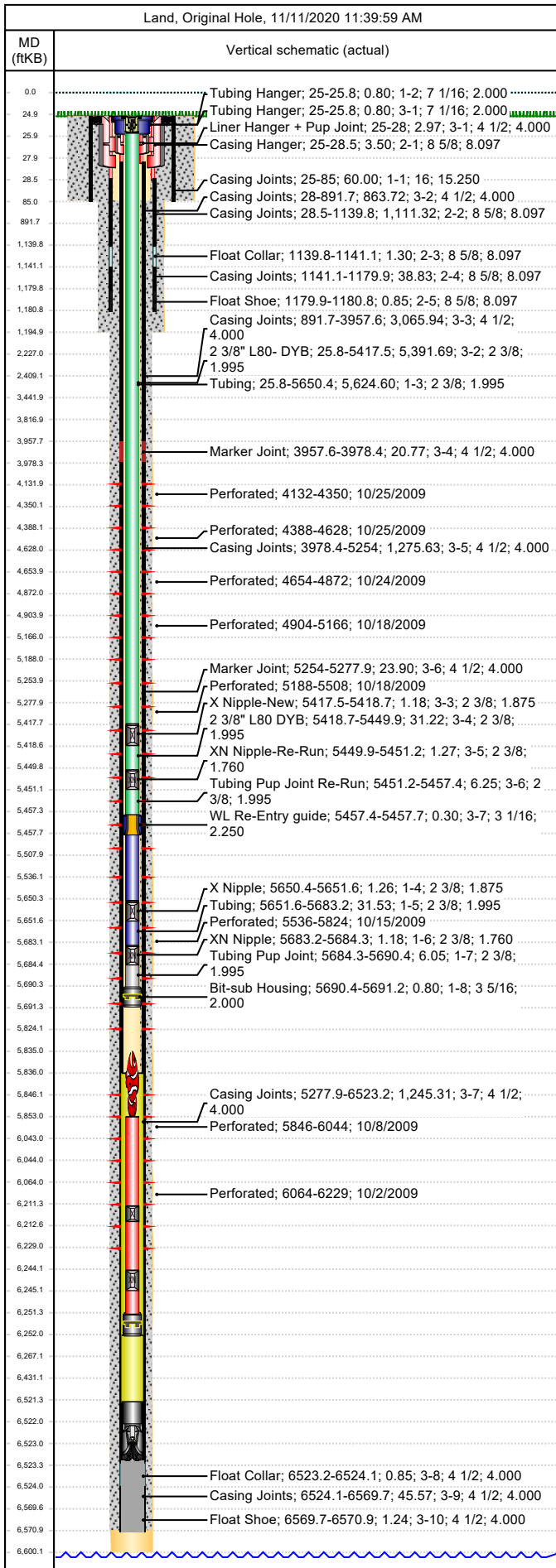


Job Details						
Job Category			Start Date		Rig/Unit End Date	
Major Rig Work Over (MRWO)			9/7/2018		9/21/2018	
Casing Strings						
Csg Des	OD (in)	Wt/Len (lb/ft)	Grade	Top Thread	Set Depth (MD) (ftKB)	
Conductor	16	65.00	H-40		85	
Surface	8 5/8	24.00	K-55		1180.8	
Production Casing	4 1/2	11.60	P-110		6570.9	
Tubing Strings						
Tubing - Production set at 5,691.2ftKB on 11/11/2009 12:00						
Tubing Description			Run Date		String Length (ft)	
Tubing - Production			11/11/2009		5,691.22	
Set Depth (MD) (ftKB)			5,691.2			
Item Des	Jts	OD (in)	Wt (lb/ft)	Grade	Len (ft)	Btm (ftKB)
KBGL					25.00	25.0
Tubing Hanger		7 1/16		4140	0.80	25.8
Tubing	179	2 3/8	4.70	L-80	5,624.60	5,650.4
X Nipple		2 3/8			1.26	5,651.6
Tubing	1	2 3/8	4.70	L-80	31.53	5,683.2
XN Nipple		2 3/8			1.18	5,684.3
Tubing Pup Joint		2 3/8	4.70	L-80	6.05	5,690.4
Bit-sub Housing		3 5/16			0.80	5,691.2
Tubing Landed @						5,691.2
Tubing - Production set at 5,457.7ftKB on 9/11/2018 07:00						
Tubing Description			Run Date		String Length (ft)	
Tubing - Production			9/11/2018		5,432.71	
Set Depth (MD) (ftKB)			5,457.7			
Item Des	Jts	OD (in)	Wt (lb/ft)	Grade	Len (ft)	Btm (ftKB)
Tubing Hanger	1	7 1/16		4140	0.80	25.8
2 3/8" L80- DYB	172	2 3/8	4.70	L-80	5,391.69	5,417.5
X Nipple-New	1	2 3/8			1.18	5,418.7
2 3/8" L80 DYB	1	2 3/8	4.70	L-80	31.22	5,449.9
XN Nipple-Re-Run	1	2 3/8			1.27	5,451.2
Tubing Pup Joint Re-Run	1	2 3/8	4.70	L-80	6.25	5,457.4
WL Re-Entry guide	1	3 1/16			0.30	5,457.7
Perforations						
Date	Top (ftKB)	Btm (ftKB)	Shot Dens (shots/ft)	Entered Shot Total	Linked Zone	
10/25/2009	4,132.0	4,350.0	3.0	30	Mesa Verde - WMFK - Williams Fork, Original Hole	
10/25/2009	4,388.0	4,628.0	3.0	27	Mesa Verde - WMFK - Williams Fork, Original Hole	
10/24/2009	4,654.0	4,872.0	3.0	30	Mesa Verde - WMFK - Williams Fork, Original Hole	
10/18/2009	4,904.0	5,166.0	3.0	30	Mesa Verde - WMFK - Williams Fork, Original Hole	
10/18/2009	5,188.0	5,508.0	3.0	27	Mesa Verde - WMFK - Williams Fork, Original Hole	
10/15/2009	5,536.0	5,824.0	3.0	30	Mesa Verde - WMFK - Williams Fork, Original Hole	
10/8/2009	5,846.0	6,044.0	3.0	30	Mesa Verde - WMFK - Williams Fork, Original Hole	
10/2/2009	6,064.0	6,229.0	3.0	30	Mesa Verde - WMFK - Cameo Coal, Original Hole	
Other Strings						
Run Date	Pull Date	Set Depth (ftKB)	Com			
Other In Hole						
Des	Top (ftKB)	Btm (ftKB)	Run Date	Pull Date	Com	
Bear Claw Kill Plug	4,090.0	4,092.0	11/2/2009	11/9/2009	Solid composite plug	
Bear Claw Frac Plug	4,370.0	4,372.0	10/25/2009	11/9/2009	Bio Ball composite, flow thru, frac, bridge plug	
Bear Claw Frac Plug	4,640.0	4,642.0	10/25/2009	11/10/2009	Bio Ball composite, flow thru, frac, bridge plug	
Bear Claw Frac Plug	4,890.0	4,892.0	10/24/2009	11/10/2009	Bio Ball composite, flow thru, frac, bridge plug	



# Wellbore Schematic

Well Name SKR-598-25-BV-11	Lease Chevron USA	Field Name Skinner Ridge	Business Unit Mid-Continent
-------------------------------	----------------------	-----------------------------	--------------------------------



Other In Hole					
Des	Top (ftKB)	Btm (ftKB)	Run Date	Pull Date	Com
Bear Claw Frac Plug	5,178.0	5,180.0	10/18/2009	11/10/2009	Bio Ball composite, flow thru, frac, bridge plug
(Sand / Mud / Debris)	5,240.0	5,691.0	6/16/2011	5/24/2013	Slickline tagged inside tbgs @ 5240' 06-16-11
Bear Claw Frac Plug	5,520.0	5,522.0	10/18/2009	11/10/2009	Bio Ball composite, flow thru, frac, bridge plug
Fish Top - Sliced/Cut, Jt	5,835.0	5,853.0	5/31/2013		18' piece 2 3/8 tbgs
Sand fill, 5/30/2013	5,836.0	6,252.0	5/30/2013		
Bear Claw Frac Plug	5,838.0	5,840.0	10/15/2009	11/10/2009	Bio Ball composite, flow thru, frac, bridge plug
Sand fill,	5,845.0	6,185.0	1/26/2011	5/24/2013	Tag w/ slick line
12 Jt's 2 3/8" tbgs	5,853.0	6,211.2	5/31/2013		
HES Solu-Plug	6,058.0	6,060.0	10/8/2009	11/10/2009	Fast Drill Obsidian Solu-Plug
Fill, 3/3/2010	6,185.0	6,524.0	3/3/2010	5/24/2013	Tag w/ slick-line, 3/3/10
X Nipple	6,211.2	6,212.4	5/31/2013		
1 Jt Tbg	6,212.4	6,244.0	5/31/2013		
XN Nipple	6,244.0	6,245.2	5/31/2013		
Tubing Pup Joint	6,245.2	6,251.2	5/31/2013		
Bit-sub Housing	6,251.2	6,252.0	5/31/2013		3 5/16" OD ??
Sand fill,	6,252.0	6,521.2	5/24/2013		
Pumped Off Bit-sub	6,521.2	6,522.0	11/11/2009		
Mill	6,522.0	6,523.2	11/11/2009		
PBTD	6,523.2	6,571.0	7/5/2008		