

Roaring Fork 14-28 Pit Closure Photos

5/15/2021

Before pit closure

At SW corner of pit looking NE



6/2/2021

Before pit closure

At NW corner of pit looking SE



6/16/2021
Backfilling pit to close it
At NW corner of pit looking E



6/16/2021
Backfilling pit to close it
At NE corner of pit looking W



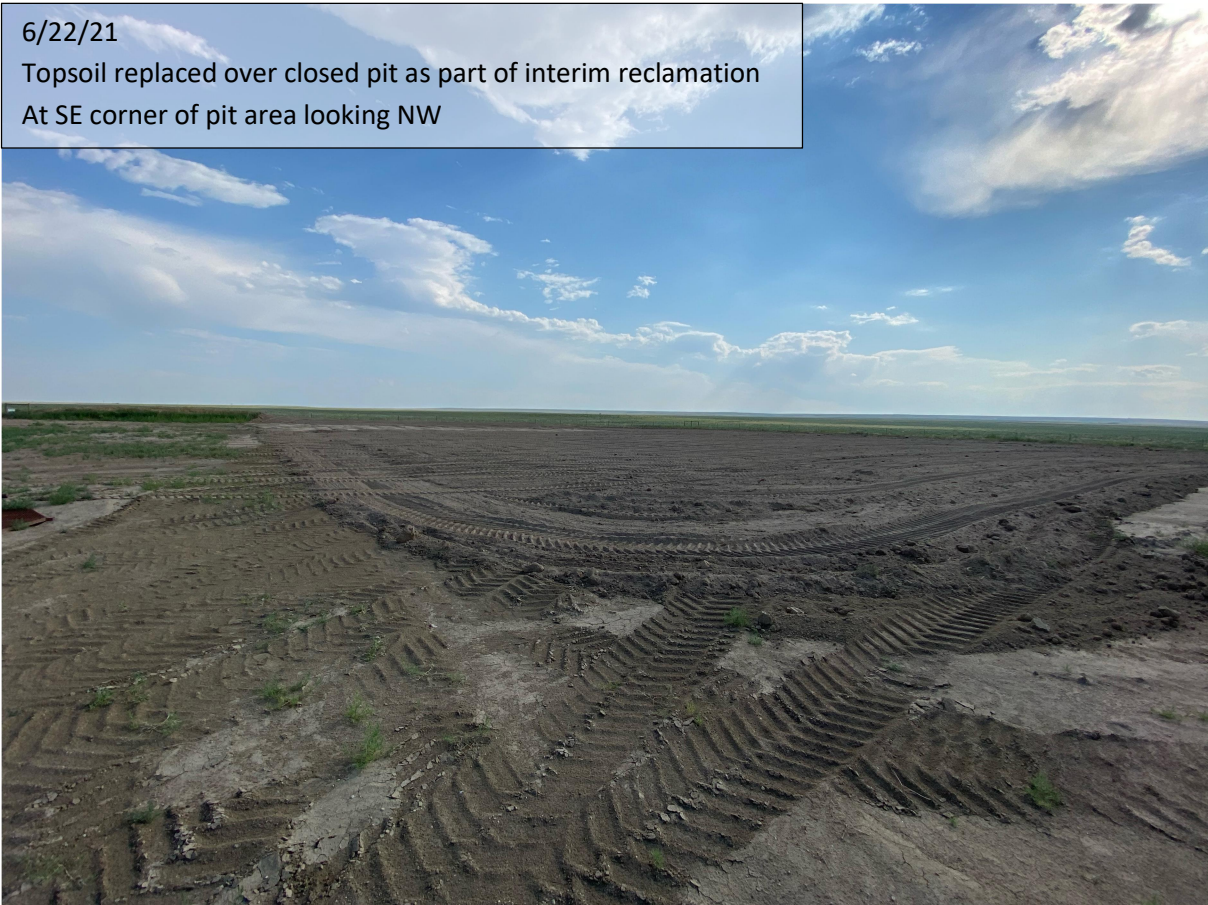
6/16/21

Backfilling pit to close it
At SE corner of pit looking NW



6/22/21

Topsoil replaced over closed pit as part of interim reclamation
At SE corner of pit area looking NW



6/22/21

Topsoil replaced over closed pit as part of interim reclamation
At NE corner of pit area looking W



7/1/21

Topsoil over closed pit
At NE corner of pit area looking W

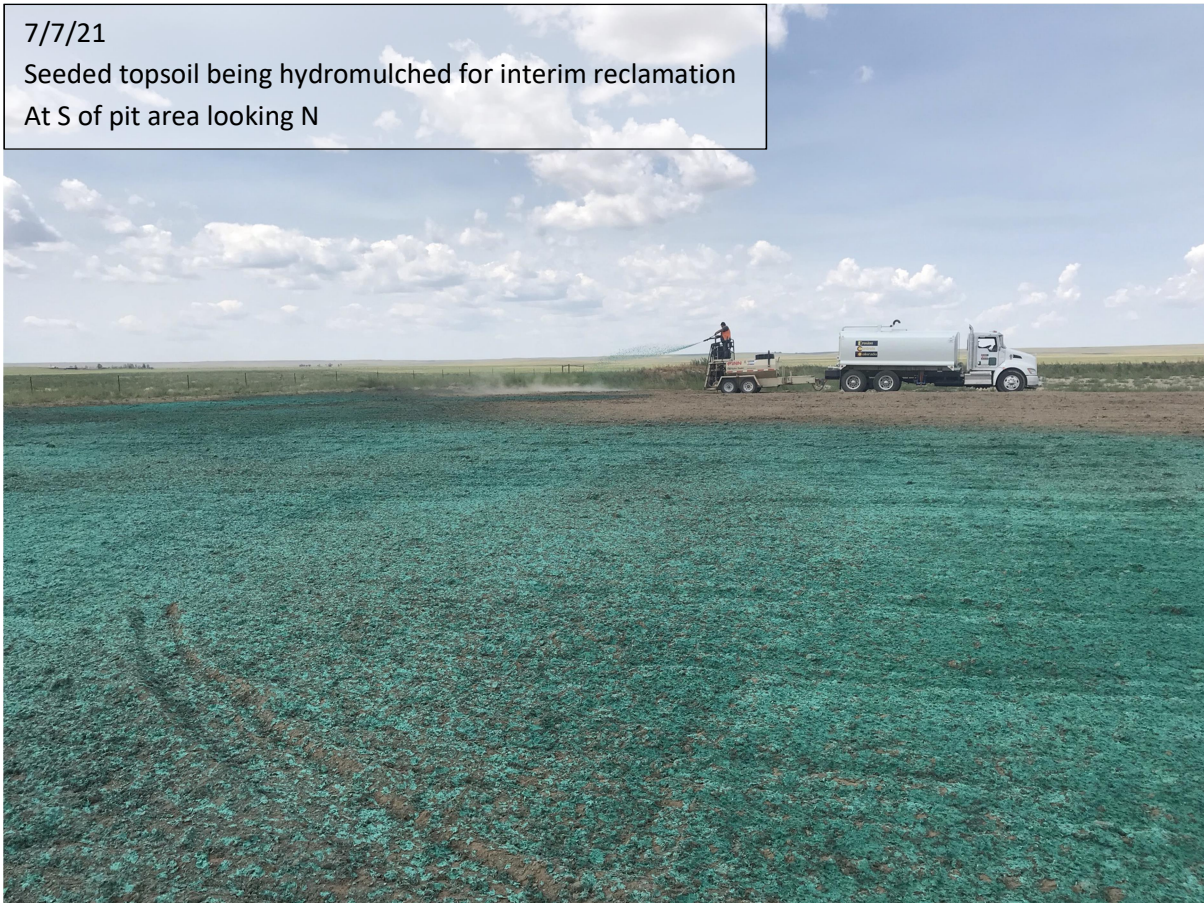
7/7/21

Topsoil being drill seeded for interim reclamation
N of well looking W across pit area



7/7/21

Seeded topsoil being hydromulched for interim reclamation
At S of pit area looking N



7/7/21

0.6 acre interim reclamation area (pit, areas E & W of pit and disturbed top soil pile N of well looking SW)



7/7/21

0.6 acre interim reclamation area (pit, areas E & W of pit and disturbed top soil pile N of well looking SSW)



7/7/21

0.6 acre interim reclamation area (pit, areas E & W of pit and disturbed top soil pile N of well looking W

