

Location Name: SAND PEBBLES 13-33, API #: 071-08224, Insp. #:695106059



PHOTO 1: LOCATION

EVERGREEN

NATURAL RESOURCES LLC

Sand Pebbles 13-33

API#05-071-08224

T32S, R67W, Sec. 33: NWSW

CR 32.5

Lat. 37.21313 / Long. -104.90144

Emergency Number: 911

or (719) 846-7898

WDID 1911733 / PERMIT #72851

WDID 1911733 / Permit # 72851



Colorado Oil & Gas Conservation Commission

PHOTO 3: WELLHEAD AND EQUIPMENT

WGS84
±16ft

37.21298, -104.90178

ft
±11ft

7712

°M
±14

SE128



Colorado Oil & Gas Conservation commission
© 13-Apr-22 12:41:50



WGS84
±16ft

37.21295, 104.90177

±11ft 7709

°M
±17

NE17

CESS APPROVAL
VACUUM



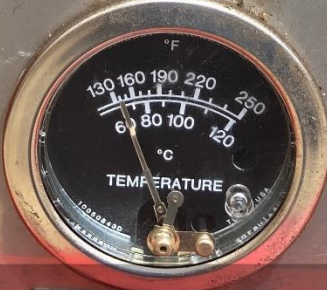
ENGINE OIL PRESSURE



GAS SUCTION PRESSURE

GAS DISCHARGE PRESSURE

PUSH TO START



ENGINE WATER TEMPERATURE

Colorado Oil & Gas Conservation commission
© 13-Apr-22 12:41:34

PHOTO 5: