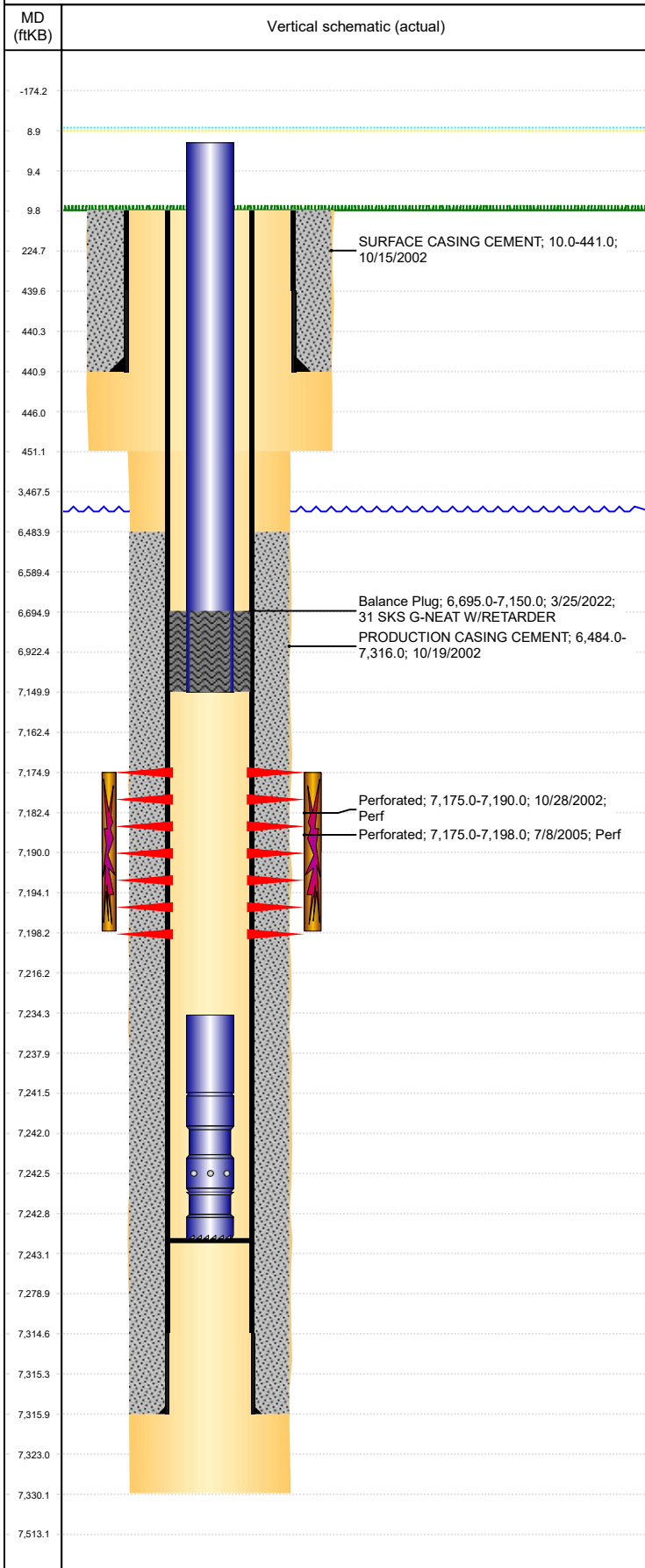


Well Name: GOLDBERG N14-13

VERTICAL, ORIGINAL HOLE, 4/11/2022 9:16:55 AM



Well Header										
API 05-123-21133		Business Unit DJ BASIN			District 15		Well Config VERTICAL			
KB - GL / MSL (ft... 10.00		Spud Date 10/15/2002		P & A Date		Well Production Status TA		SoRT Yes		
Comment TD DISCREPANCY DRLG RPT 7330', ST RPT 7317'										
Surface Location (Congressional)										
Qtr 3 SW	Qtr 4 SW	Section 14	Twnshp 5	Twnsh... N	Range 67	Rng E/... W	Actual Latitude (°) 40.39503176	Actual Longitude (°) -104.86817115		
Wellbore Sections										
Section Des			Size (in)			Act Top, MD (ftKB)		Act Btm, MD (ftKB)		
SURFACE			12 1/4			10		451		
PRODUCTION			7 7/8			451		7,330		
Casing Strings										
Csg Des			Run Date		OD (in)	Wt/Len (lb/ft)	Grade	Top, MD (ftKB)	MD (ftKB)	
Surface			10/15/2002		8 5/8	24.00	J-55	10.0	441.0	
Production			10/19/2002		4 1/2	11.60	M-80	10.0	7,316.0	
Cement										
Des					Start Date		Top (ftKB)		Btm (ftKB)	
SURFACE CASING CEMENT					10/15/2002		10.0		441.0	
PRODUCTION CASING CEMENT					10/19/2002		6,484.0		7,316.0	
Balance Plug					3/25/2022		6,695.0		7,150.0	
Zone Statuses										
Zone Name		Status Date		Status	Fluid Type		Job		Prod Method	
CODELL		1/14/2010		PR	Water				Flowing	
CODELL		3/25/2022		TA	Water		SET CEMENT PLUG, 3/24/2022 08:00			
Perforation Data										
Linked Zone			Bnch/Stg	Entered Shot Total		Top (ftKB)		Btm (ftKB)		Date
CODELL, ORIGINAL HOLE				60		7,175.00		7,190.00		10/28/2002
CODELL, ORIGINAL HOLE				46		7,175.00		7,198.00		7/8/2005
Stimulation Intervals										
Zone				Start Date			Top (ftKB)		Btm (ftKB)	
CODELL, ORIGINAL HOLE				11/20/2002			7,175.0		7,190.0	
CODELL, ORIGINAL HOLE				7/18/2005			7,175.0		7,198.0	
Other In Hole										
Run Date		Des			Make		OD (in)	Top (ftKB)	Btm (ftKB)	
Logs										
Date		Type					Top, MD (ftKB)		Btm, MD (ftKB)	
10/20/2002		COMPENSATED DENSITY					4,600.0		7,297.0	
10/20/2002		INDUCTION					441.0		7,317.0	
10/28/2002		CEMENT BOND					6,350.0		7,276.0	
7/18/2017		GYRO					0.0		7,050.0	
Plug Back Total Depths										
Date		Type			Com				Depth (ftKB)	
7/7/2005		FILL			CLEAN OUT BEFORE FRAC				7,287.0	
11/4/2005		FILL			CLEAN OUT AFTER FRAC				7,243.0	