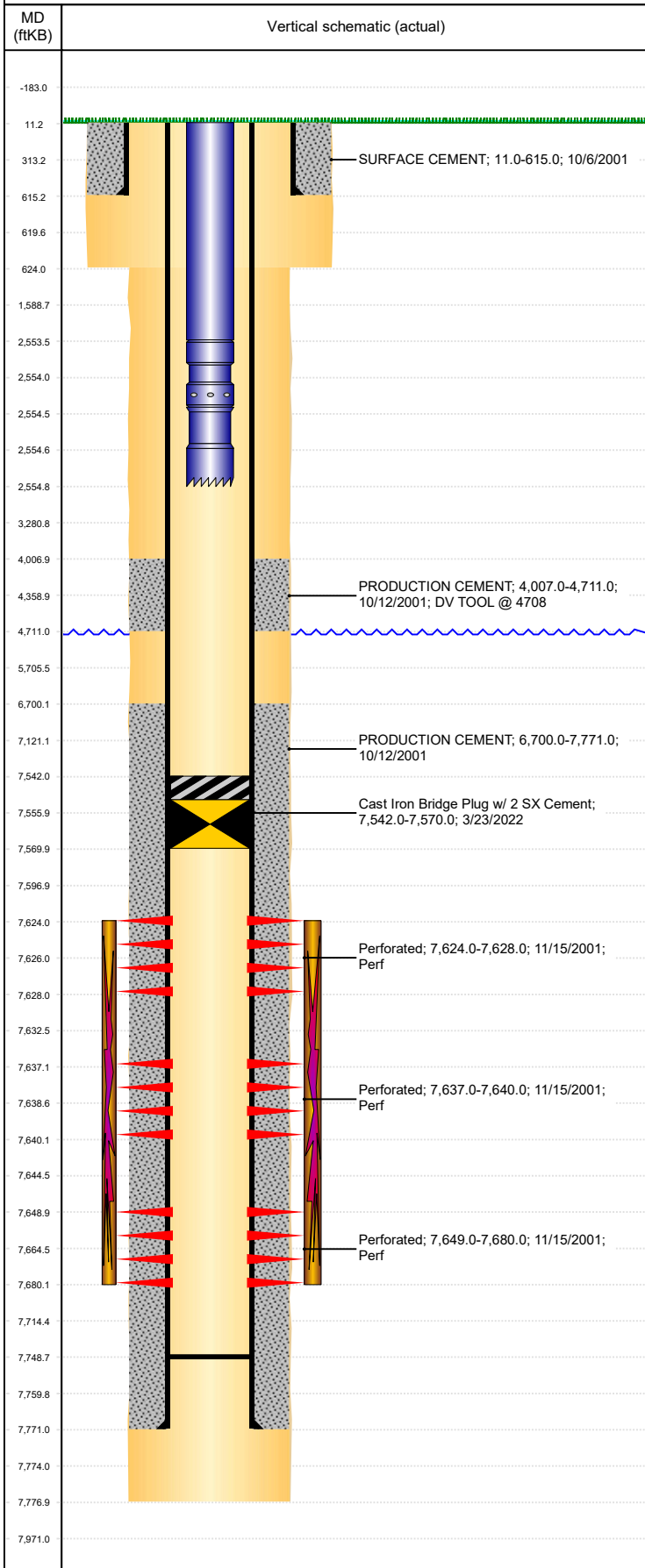


Well Name: BB DRAW FEDERAL H04-07J1

VERTICAL, ORIGINAL HOLE, 4/5/2022 9:07:07 AM



Well Header										
API 05-123-20457		Business Unit DJ BASIN			District 15		Well Config VERTICAL			
KB - GL / MSL (ft... 11.00		Spud Date 10/6/2001		P & A Date		Well Production Status TA			SoRT Yes	
Comment DV tool @ 4610,sqz hole @ 4714, 25 sx 11/13/01										
Surface Location (Congressional)										
Qtr 3 SW	Qtr 4 NE	Section 4	Twنشp 3	Twنشp... N	Range 65	Rng E/... W	Actual Latitude (°) 40.25602390		Actual Longitude (°) -104.66643955	
Wellbore Sections										
Section Des			Size (in)			Act Top, MD (ftKB)		Act Btm, MD (ftKB)		
SURFACE			12 1/4			11		624		
PRODUCTION			7 7/8			624		7,777		
Casing Strings										
Csg Des			Run Date		OD (in)	Wt/Len (lb/ft)	Grade	Top, MD (ftKB)	MD (ftKB)	
Surface Casing			10/6/2001		8 5/8	24.00		11.0	615.0	
Production			10/12/2001		4 1/2	11.60	N-80	11.0	7,771.0	
Cement										
Des					Start Date		Top (ftKB)		Btm (ftKB)	
SURFACE CEMENT					10/6/2001		11.0		615.0	
PRODUCTION CEMENT					10/12/2001		4,007.0		4,711.0	
PRODUCTION CEMENT					10/12/2001		6,700.0		7,771.0	
Zone Statuses										
Zone Name		Status Date	Status	Fluid Type	Job				Prod Method	
J SAND		11/25/2001	PR	Oil					Flowing	
J SAND		6/16/2009	PR						Flowing	
Perforation Data										
Linked Zone			Bnch/Stg	Entered Shot Total	Top (ftKB)		Btm (ftKB)		Date	
J SAND, ORIGINAL HOLE				8	7,624.00		7,628.00		11/15/2001	
J SAND, ORIGINAL HOLE				6	7,637.00		7,640.00		11/15/2001	
J SAND, ORIGINAL HOLE				62	7,649.00		7,680.00		11/15/2001	
Stimulation Intervals										
Zone				Start Date		Top (ftKB)		Btm (ftKB)		
J SAND, ORIGINAL HOLE				11/20/2001		7,624.0		7,680.0		
Other In Hole										
Run Date		Des			Make		OD (in)	Top (ftKB)	Btm (ftKB)	
3/23/2022		Cast Iron Bridge Plug w/ 2 SX Cement					4	7,542.0	7,570.0	
Logs										
Date		Type					Top, MD (ftKB)		Btm, MD (ftKB)	
10/12/2001		COMPENSATED DENSITY					4,300.0		7,757.0	
10/12/2001		INDUCTION					624.0		7,777.0	
11/12/2001		CBL/CCL/GR					3,880.0		7,727.0	
Plug Back Total Depths										
Date		Type			Com				Depth (ftKB)	
5/20/2009		FILL			BAILED OUT TO 7747' KB				7,747.0	
5/7/2012		GUIDE SHOE			BAILED OUT TO 7748.53' KB.				7,748.5	