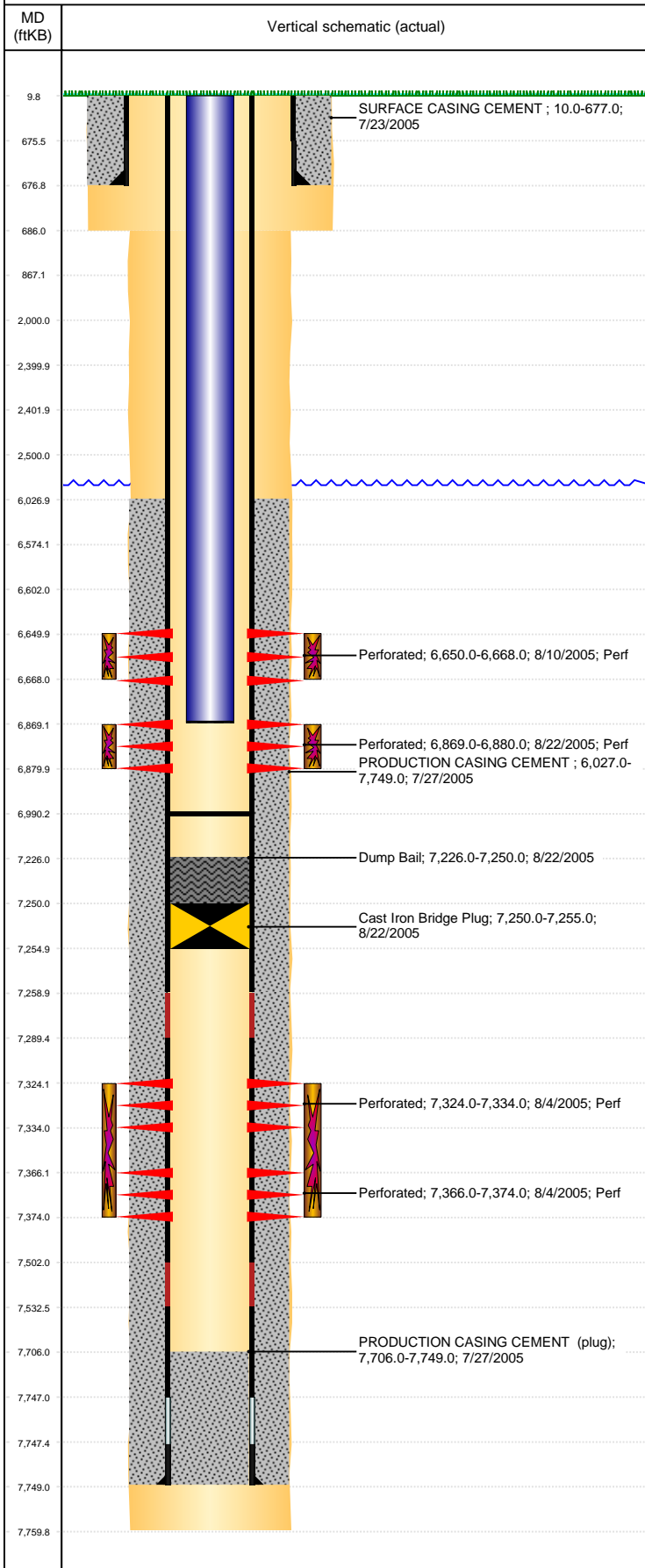


Well Name: GUTTERSEN STATE DD08-11

VERTICAL, ORIGINAL HOLE, 4/12/2022 5:59:38 PM



Well Header									
API 05-123-22910		Business Unit DJ BASIN			District 15		Well Config VERTICAL		
KB - GL / MSL (ft... 10.00		Spud Date 7/22/2005		P & A Date		Well Production Status SI			SoRT No
Comment TD DISCREPANCY: DRL RPTS = 7665, ST COMP RPT & OPEN HOLE LOGS = 7760. STATE SHOWS JSAND PRODUCING UNTIL 2009, YET CIBP NEVER DRILLED OUT. ??? STATE SHOWS NB/CD SHUT IN SINCE MAR 2017.									
Surface Location (Congressional)									
Qtr 3 NE	Qtr 4 SW	Section 8	Twnshp 3	Twnsh... N	Range 63	Rng E/... W	Actual Latitude (°) 40.23835101	Actual Longitude (°) -104.46375382	
Wellbore Sections									
Section Des			Size (in)			Act Top, MD (ftKB)		Act Btm, MD (ftKB)	
SURFACE			12 1/4			10		686	
PRODUCTION			7 7/8			686		7,760	
Casing Strings									
Csg Des			Run Date		OD (in)	Wt/Len (lb/ft)	Grade	Top, MD (ftKB)	MD (ftKB)
Surface			7/23/2005		8 5/8	24.00		10.0	677.0
Production			7/27/2005		4 1/2	11.60	M-80	10.0	7,749.0
Cement									
Des					Start Date		Top (ftKB)		Btm (ftKB)
SURFACE CASING CEMENT					7/23/2005		10.0		677.0
PRODUCTION CASING CEMENT					7/27/2005		6,027.0		7,749.0
Dump Bail					8/22/2005		7,226.0		7,250.0
Zone Statuses									
Zone Name	Status Date	Status	Fluid Type	Job				Prod Method	
NIOBRARA	5/6/2010	PR	Water	DRILLING/COMPLETION - ORIGINAL, 7/22/2005... DRILLING/COMPLETION - ORIGINAL, 7/22/2005...				Flowing	
NIOBRARA	5/9/2017	SI							
J SAND	8/22/2005	SI							
CODELL	9/16/2005	PR							
CODELL	5/6/2010	PR	Water					Flowing	
Perforation Data									
Linked Zone			Bnch/Stg	Entered Shot Total	Top (ftKB)		Btm (ftKB)		Date
NIOBRARA, ORIGINAL HOLE				108	6,650.00		6,668.00		8/10/2005
CODELL, ORIGINAL HOLE				44	6,869.00		6,880.00		8/22/2005
J SAND, ORIGINAL HOLE				40	7,324.00		7,334.00		8/4/2005
J SAND, ORIGINAL HOLE				32	7,366.00		7,374.00		8/4/2005
Stimulation Intervals									
Zone				Start Date		Top (ftKB)		Btm (ftKB)	
NIOBRARA, ORIGINAL HOLE				8/10/2005		6,650.0		6,668.0	
CODELL, ORIGINAL HOLE				8/10/2005		6,869.0		6,880.0	
J SAND, ORIGINAL HOLE				8/9/2005		7,324.0		7,374.0	
Other In Hole									
Run Date		Des			Make		OD (in)	Top (ftKB)	Btm (ftKB)
8/22/2005		Cast Iron Bridge Plug					4	7,250.0	7,255.0
Logs									
Date		Type					Top, MD (ftKB)		Btm, MD (ftKB)
7/27/2005		COMPENSATED DENSITY					4,250.0		7,734.0
7/27/2005		INDUCTION					677.0		7,754.0
8/3/2005		CBL/CCL/GR					5,850.0		7,705.0
1/9/2014		GYRO					0.0		6,800.0
Plug Back Total Depths									
Date		Type			Com				Depth (ftKB)
8/3/2005		FILL			DEPTH LOGGER FROM CBL				7,706.0
9/23/2005		FILL			C/O AND LAND TBG				6,990.0