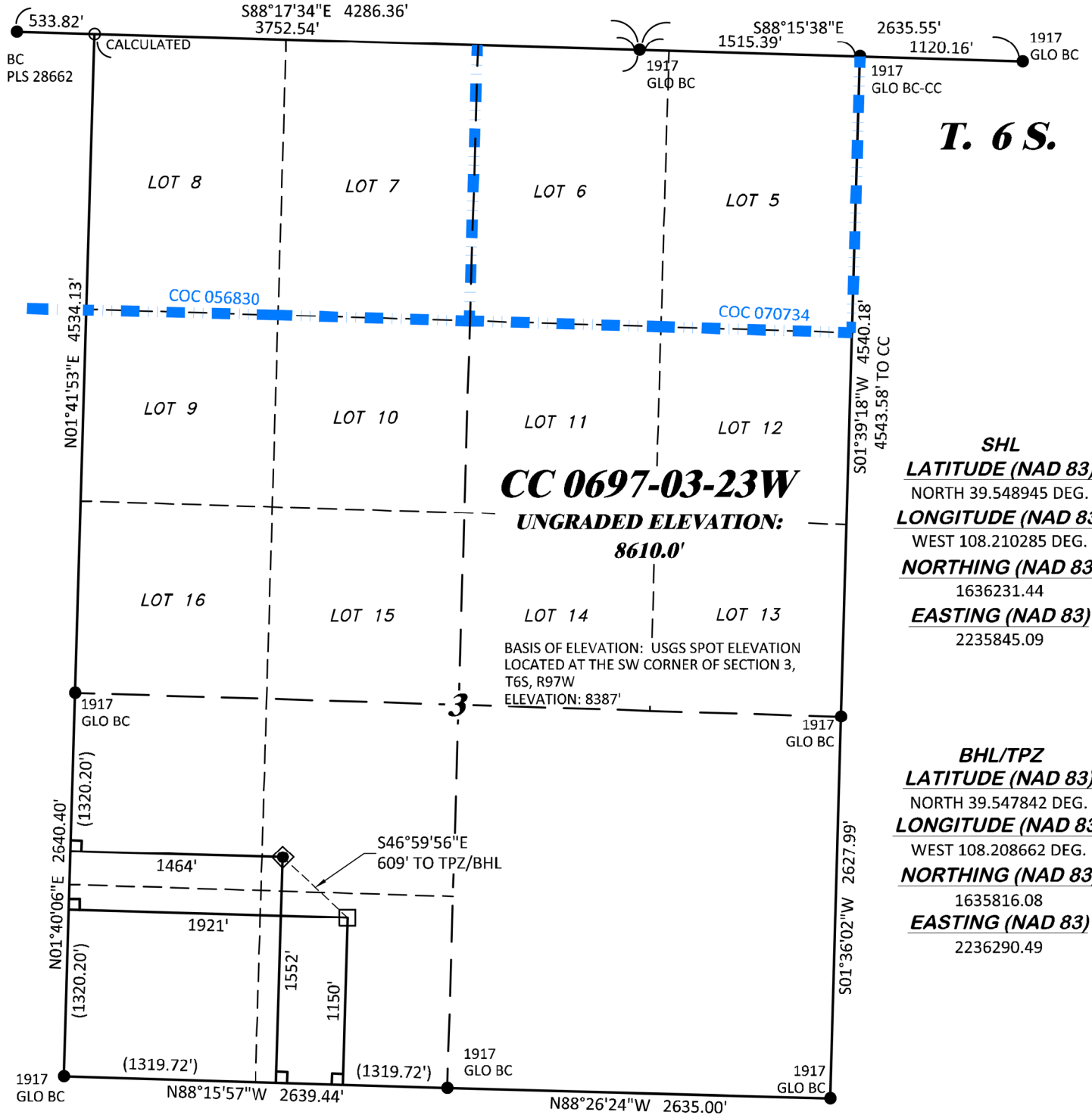


R. 97 W.

T. 6 S.



CC 0697-03-23W

UNGRADED ELEVATION:

8610.0'

BASIS OF ELEVATION: USGS SPOT ELEVATION
LOCATED AT THE SW CORNER OF SECTION 3,
T6S, R97W
ELEVATION: 8387'

SHL
LATITUDE (NAD 83)
NORTH 39.548945 DEG.
LONGITUDE (NAD 83)
WEST 108.210285 DEG.
NORTHING (NAD 83)
1636231.44
EASTING (NAD 83)
2235845.09

BHL/TPZ
LATITUDE (NAD 83)
NORTH 39.547842 DEG.
LONGITUDE (NAD 83)
WEST 108.208662 DEG.
NORTHING (NAD 83)
1635816.08
EASTING (NAD 83)
2236290.49

NOTES

1. GPS OPERATOR T. SHERRILL OBSERVED A PDOF OF 2.1.
2. ALL GPS OBSERVATIONS ARE IN COMPLIANCE WITH COGCC RULE No.215.
3. EXISTING IMPROVEMENTS WITHIN 500' OF LOCATION. SEE EXHIBIT 2D.
4. SURROUNDING SURFACE USE IS NATIVE BRUSH, NON CROP RANGELAND.

BASIS OF BEARING/DATUM

SPCS COLORADO CENTRAL NAD 27 BASED ON GPS OBSERVATIONS AND OPUS SOLUTION ON DRG CONTROL POINT "WILLIAMS" HAVING A POSITION OF:
NAD83(2011)
LAT 39° 31' 35.18" NORTH
LONG 108° 12' 16.79" WEST
NAVD88 ELEVATION: 8618.14'

THE WEST LINE OF THE SW¼ OF SECTION 3, MONUMENTED BY GLO BC'S AND BEARING N 01° 40' 06" E.

SURVEYOR'S STATEMENT

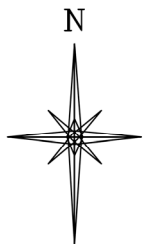
I, DAVID E. HENDERHAN, AN EMPLOYEE AND AGENT ON BEHALF OF D.R. GRIFFIN & ASSOCIATES, INC. STATE THE PLAT HEREON IS A CORRECT REPRESENTATION OF A SURVEY MADE UNDER MY SUPERVISION ON THE 2nd DAY OF NOVEMBER, 2020 OF THE SHOWN CC 0697-03-23W AND THAT THE LOCATION HAS BEEN STAKED ON THE GROUND.

Notice: In accordance with Colorado State Law, any legal action based upon any defect in this survey plat must commence within three (3) years after first discovery of such defect. In no event, may any action based upon any defect in this survey plat be commenced more than ten (10) years from the date of certification shown hereon.

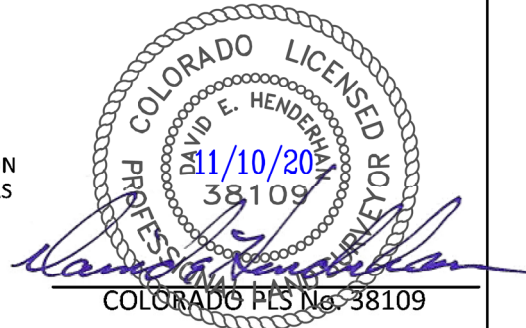
CC 603-23-32 PAD

LEGEND

- ◆ WELL LOCATION
- APPROX. BHL/TPZ
- └ DENOTES 90° TIE
- FOUND MONUMENT
- CALCULATED CORNER
- BLM LEASE LINE



GRID NORTH
SCALE' 1" = 1000'
500' 0 1000'



**PLAT OF DRILLING LOCATION IN
NESW, SECTION 3, FOR
LARAMIE ENERGY, LLC.**

**1552' F/SL, & 1464' F/WL, SECTION 3,
T. 6 S., R. 97 W., 6TH P.M.,
GARFIELD COUNTY, COLORADO**

DRAWN: 6/21/2017 - TCM	SCALE: 1" = 1000'
REVISED: 11/4/2020 - DEH	DRG JOB No. 21294
MISC. REVISIONS	B4 03-23W