



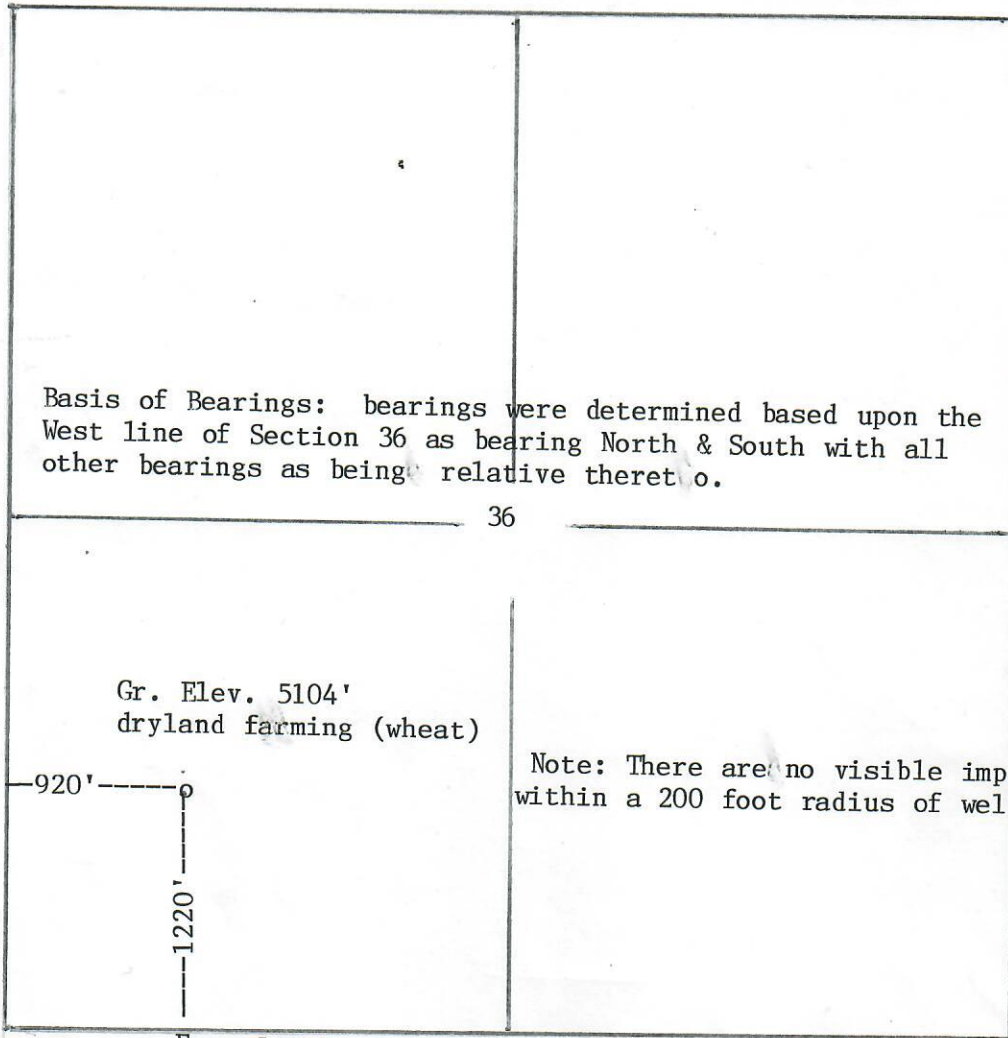
Holloway & Holloway, Inc.  
P.O. Box 3331  
Greeley, CO 80633  
(303) 867-3715  
(303) 352-5852



00051661

R68W

NW cor. line CL  
roads from North &  
East



T  
1  
N



N



SW cor. re-bar  
in roadway  
Basis of elev spot elev  
at SW cor. 5098'

East 2643'

S $\frac{1}{4}$  cor. re-bar  
in roadway

Scale --- 1" = 1000'

In accordance with a request from H.S. Resources, Inc.  
the Undersigned has  
determined the location of the HSR-Northglenn 14-36 well  
to be 1220' FSL & 920' FWL at right angles as co-ordinates  
Section 36 Township 1N Range 68W of the 6th principal Meridian  
Weld County, Colorado.

I hereby certify,  
that this oil and/or gas well location certificate was prepared for H.S. Resources, Inc.  
that it is not a land survey plat or improvement survey plat, and that it is not to be relied upon for the  
establishment of fence, building or other future improvement lines

Date 5-26-98

*Bob A. Holloway*  
Holloway & Holloway, Inc.  
States of  
Colorado, New Mexico, Wyoming

