

BJU G35 FED 14B-35 496
 Garfield County, CO
 Q220276 & RM-220257
 Design #3

Company Name: Caerus Oil & Gas
 BJU G35 FED 14B-35 496
 Garfield County, CO
 Rig: H&P#329
 Created By: Will Jircik
 Date: 15:35, March 25 2022

WELL DETAILS: BJU G35 FED 14B-35 496

8164.0					
+N/-S	+E/-W	Northing	Easting	Latitude	Longitude
0.0	0.0	14415297.90	2447060.50	39.660477	-108.134097 14B-35

PROJECT DETAILS: Garfield County, CO

System Datum: Universal Transverse Mercator (US Survey Feet)
 Datum: NAD 1927 - Western US
 Ellipsoid: Clarke 1866
 Zone: Zone 12N (114 W to 108 W)
 Geodetic System: Mean Sea Level

DESIGN TARGET DETAILS

Name	TVD	+N/-S	+E/-W	Northing	Easting	Latitude	Longitude
14B-35 - OHCR	7804.0	-1555.7	-1527.0	14413694.19	2445583.93	39.656207	-108.139518
14B-35 - PBHL	11567.0	-1589.9	-1621.0	14413657.00	2445491.10	39.656114	-108.139852

DESIGN ANNOTATIONS

MD	Inc	Azi	TVD	+N/-S	+E/-W	VSec	Departure	Annotation
116.0	0.85	8.77	116.0	0.6	-0.2	-0.3	0.0	Conductor Tie in
174.7	1.00	224.44	174.7	0.7	-0.5	-0.1	0.9	EOB @ 1.00° Inc. / 224.45° Azm
199.9	1.00	224.44	199.9	0.4	-0.8	0.3	1.4	Build 3° / 100'
738.5	17.16	224.44	730.0	-60.1	-60.1	85.0	86.1	EOB @ 17.16° Inc. / 224.44° Azm
7552.3	17.16	224.44	7240.6	-1495.1	-1467.5	2094.6	2096.0	Drop 3° / 100'
8124.2	0.00	0.00	7804.0	-1555.7	-1527.0	2179.5	2181.0	EOD @ Vertical / Build 1.5° / 100'
8227.1	1.54	250.00	7906.9	-1556.2	-1528.3	2180.8	2182.4	EOB @ 1.54° Inc. / 250.00° Azm
11888.6	1.54	250.00	11567.0	-1589.9	-1621.0	2270.6	2281.0	TD @ 11888.6' MD / 11567.0' TVD

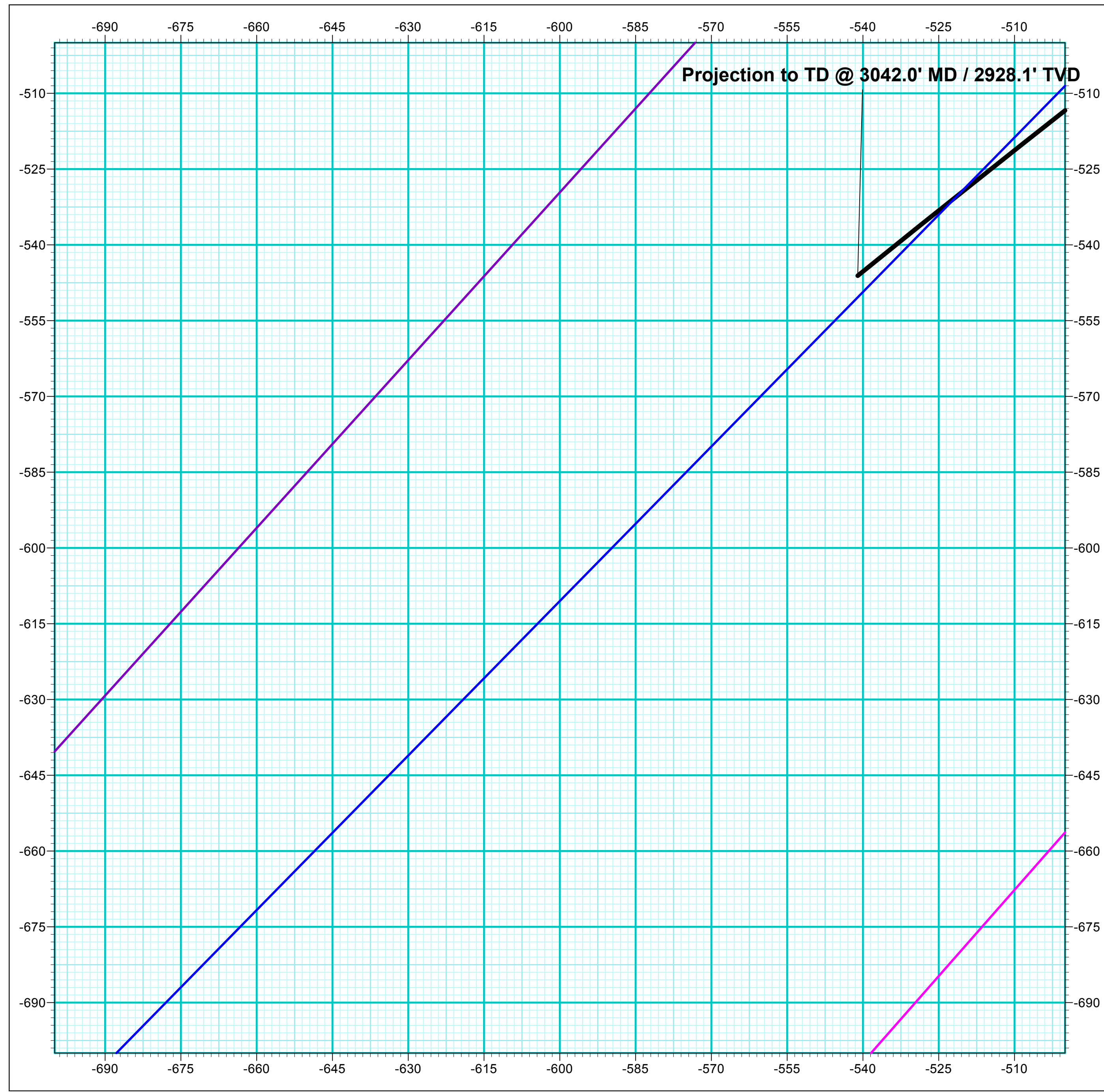
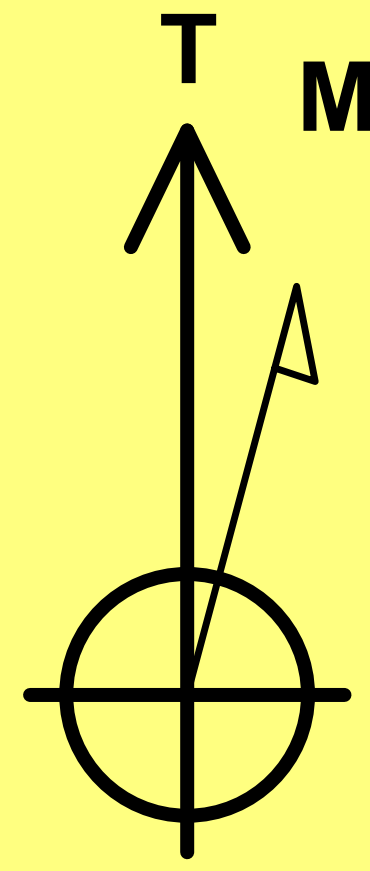
FORMATION TOP DETAILS

TVDPATH	MDPATH	FORMATION
2483.0	2573.2	Wasatch
5483.0	5712.9	Wasatch G
5795.0	6039.4	Fort Union
7804.0	8124.2	Ohio Creek
7804.0	8124.2	TOG
8050.0	8370.3	Williams Fork
10766.0	11087.3	Cameo
11367.0	11688.5	Rollins



Azimuths to True North
 Magnetic North: 9.25°

Strength: 51102.7nT
 Dip Angle: 65.72°
 Date: 3/19/2022
 Model: HDGM2022

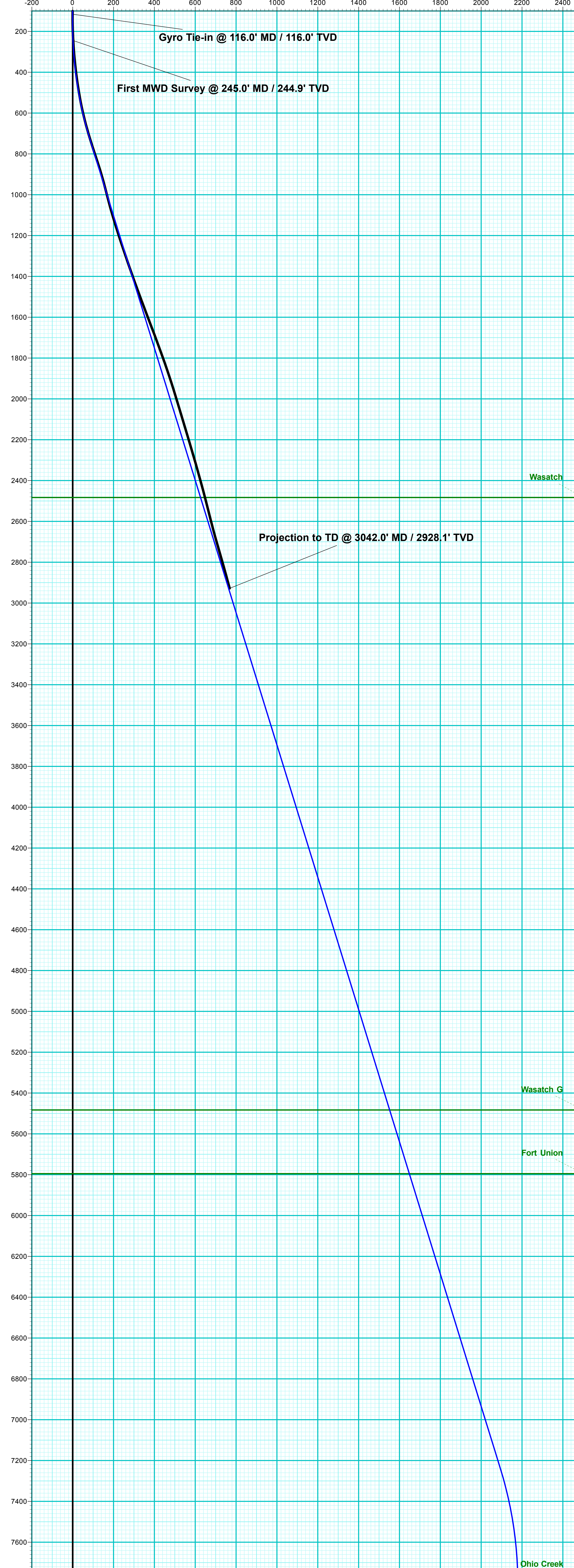
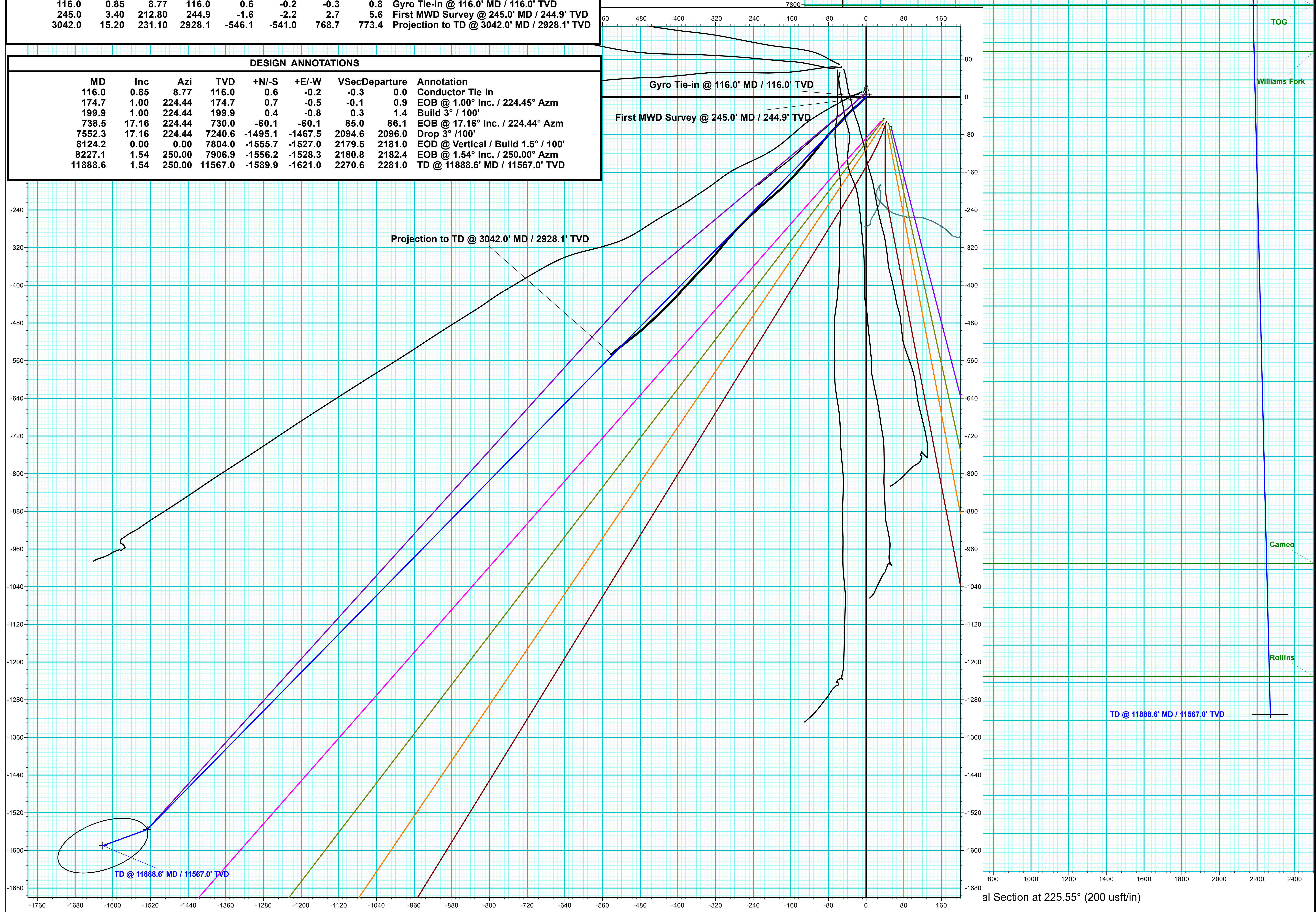


ANNOTATIONS

MD	Inc	Azi	TVD	+N/-S	+E/-W	VSec	Departure	Annotation
116.0	0.85	8.77	116.0	0.6	-0.2	-0.3	0.0	Gyro Tie-in @ 116.0' MD / 116.0' TVD
245.0	3.40	212.80	244.9	-1.6	-2.2	2.7	5.6	First MWD Survey @ 245.0' MD / 244.9' TVD
3042.0	15.20	231.10	2928.1	-546.1	-541.0	768.7	773.4	Projection to TD @ 3042.0' MD / 2928.1' TVD

DESIGN ANNOTATIONS

MD	Inc	Azi	TVD	+N/-S	+E/-W	VSec	Departure	Annotation
116.0	0.85	8.77	116.0	0.6	-0.2	-0.3	0.0	Conductor Tie in
174.7	1.00	224.44	174.7	0.7	-0.5	-0.1	0.9	EOB @ 1.00° Inc. / 224.45° Azm
199.9	1.00	224.44	199.9	0.4	-0.8	0.3	1.4	Build 3° / 100'
738.5	17.16	224.44	730.0	-60.1	-60.1	85.0	86.1	EOB @ 17.16° Inc. / 224.44° Azm
7552.3	17.16	224.44	7240.6	-1495.1	-1467.5	2094.6	2096.0	Drop 3° / 100'
8124.2	0.00	0.00	7804.0	-1555.7	-1527.0	2179.5	2181.0	EOD @ Vertical / Build 1.5° / 100'
8227.1	1.54	250.00	7906.9	-1556.2	-1528.3	2180.8	2182.4	EOB @ 1.54° Inc. / 250.00° Azm
11888.6	1.54	250.00	11567.0	-1589.9	-1621.0	2270.6	2281.0	TD @ 11888.6' MD / 11567.0' TVD





Caerus Oil & Gas

Garfield County, CO

NPM G35 496 Pad

BJU G35 FED 14B-35 496 - Slot 14B-35

Wellbore #1

Design: Wellbore #1

KLX Survey Report

25 March, 2022



Company:	Caerus Oil & Gas	Local Co-ordinate Reference:	Well BJU G35 FED 14B-35 496 - Slot 14B-35
Project:	Garfield County, CO	TVD Reference:	RKB @ 8194.0usft (H&P#329)
Site:	NPM G35 496 Pad	MD Reference:	RKB @ 8194.0usft (H&P#329)
Well:	BJU G35 FED 14B-35 496	North Reference:	True
Wellbore:	Wellbore #1	Survey Calculation Method:	Minimum Curvature
Design:	Wellbore #1	Database:	EDM 5000.1 Single User Db

Project	Garfield County, CO		
Map System:	Universal Transverse Mercator (US Survey Feet)	System Datum:	Mean Sea Level
Geo Datum:	NAD 1927 - Western US		
Map Zone:	Zone 12N (114 W to 108 W)		

Site	NPM G35 496 Pad				
Site Position:		Northing:	14,415,365.20 usft	Latitude:	39.660667
From:	Map	Easting:	2,447,000.80 usft	Longitude:	-108.134301
Position Uncertainty:	0.0 usft	Slot Radius:	13-3/16 "	Grid Convergence:	1.83 °

Well	BJU G35 FED 14B-35 496 - Slot 14B-35					
Well Position	+N/-S	0.0 usft	Northing:	14,415,297.90 usft	Latitude:	39.660477
	+E/-W	0.0 usft	Easting:	2,447,060.50 usft	Longitude:	-108.134097
Position Uncertainty		0.0 usft	Wellhead Elevation:	usft	Ground Level:	8,164.0 usft

Wellbore	Wellbore #1				
Magnetics	Model Name	Sample Date	Declination (°)	Dip Angle (°)	Field Strength (nT)
	HDGM2022	3/19/2022	9.25	65.72	51,102.70000000

Design	Wellbore #1				
Audit Notes:					
Version:	1.0	Phase:	ACTUAL	Tie On Depth:	0.0
Vertical Section:	Depth From (TVD) (usft)	+N/-S (usft)	+E/-W (usft)	Direction (°)	
	0.0	0.0	0.0	224.73	

Survey Program	Date	3/25/2022			
From (usft)	To (usft)	Survey (Wellbore)	Tool Name	Description	
30.0	116.0	Sfc Gyro (Wellbore #1)	GYRO-NS	OWSG Gyrocompass Gyro	
245.0	3,042.0	KLX MWD (Wellbore #1)	MWD	OWSG MWD - Standard	

Survey										
Measured Depth (usft)	Inclination (°)	Azimuth (°)	Vertical Depth (usft)	+N/-S (usft)	+E/-W (usft)	Vertical Section (usft)	Dogleg Rate (°/100usft)	Build Rate (°/100usft)	Turn Rate (°/100usft)	
0.0	0.00	0.00	0.0	0.0	0.0	0.0	0.00	0.00	0.00	
30.0	0.00	0.00	30.0	0.0	0.0	0.0	0.00	0.00	0.00	
60.0	0.40	293.30	60.0	0.0	-0.1	0.0	1.33	1.33	0.00	
90.0	0.77	347.59	90.0	0.3	-0.2	0.0	2.09	1.23	180.97	
Gyro Tie-in @ 116.0' MD / 116.0' TVD										
116.0	0.85	8.77	116.0	0.6	-0.2	-0.3	1.18	0.31	81.46	
First MWD Survey @ 245.0' MD / 244.9' TVD										
245.0	3.40	212.80	244.9	-1.6	-2.2	2.7	3.25	1.98	-120.91	
336.0	5.30	224.70	335.7	-6.9	-6.6	9.5	2.30	2.09	13.08	

Company:	Caerus Oil & Gas	Local Co-ordinate Reference:	Well BJU G35 FED 14B-35 496 - Slot 14B-35
Project:	Garfield County, CO	TVD Reference:	RKB @ 8194.0usft (H&P#329)
Site:	NPM G35 496 Pad	MD Reference:	RKB @ 8194.0usft (H&P#329)
Well:	BJU G35 FED 14B-35 496	North Reference:	True
Wellbore:	Wellbore #1	Survey Calculation Method:	Minimum Curvature
Design:	Wellbore #1	Database:	EDM 5000.1 Single User Db

Survey										
Measured Depth (usft)	Inclination (°)	Azimuth (°)	Vertical Depth (usft)	+N/-S (usft)	+E/-W (usft)	Vertical Section (usft)	Dogleg Rate (°/100usft)	Build Rate (°/100usft)	Turn Rate (°/100usft)	
428.0	7.60	229.00	427.1	-13.9	-14.2	19.8	2.55	2.50	4.67	
520.0	10.20	228.40	518.0	-23.3	-24.9	34.0	2.83	2.83	-0.65	
614.0	13.30	223.70	610.0	-36.6	-38.6	53.2	3.45	3.30	-5.00	
709.0	16.50	223.80	701.8	-54.3	-55.4	77.6	3.37	3.37	0.11	
803.0	18.50	223.10	791.4	-74.8	-74.9	105.8	2.14	2.13	-0.74	
898.0	17.50	218.40	881.8	-97.0	-94.0	135.1	1.86	-1.05	-4.95	
993.0	14.00	218.40	973.2	-117.2	-110.1	160.7	3.68	-3.68	0.00	
1,087.0	15.60	220.30	1,064.1	-135.8	-125.3	184.6	1.78	1.70	2.02	
1,182.0	17.40	221.70	1,155.2	-156.1	-143.0	211.6	1.94	1.89	1.47	
1,277.0	18.50	224.00	1,245.5	-177.6	-162.9	240.8	1.38	1.16	2.42	
1,371.0	19.00	228.40	1,334.6	-198.5	-184.7	271.0	1.60	0.53	4.68	
1,466.0	20.00	229.60	1,424.1	-219.3	-208.7	302.6	1.13	1.05	1.26	
1,561.0	20.40	228.00	1,513.3	-240.9	-233.4	335.3	0.72	0.42	-1.68	
1,655.0	20.90	225.40	1,601.2	-263.6	-257.5	368.5	1.11	0.53	-2.77	
1,750.0	20.60	223.00	1,690.1	-287.7	-280.9	402.1	0.95	-0.32	-2.53	
1,844.0	20.00	218.90	1,778.2	-312.3	-302.3	434.6	1.64	-0.64	-4.36	
1,939.0	18.80	219.70	1,867.8	-336.7	-322.3	466.0	1.29	-1.26	0.84	
2,034.0	17.20	224.10	1,958.2	-358.6	-341.8	495.3	2.21	-1.68	4.63	
2,128.0	16.70	224.10	2,048.1	-378.3	-360.9	522.7	0.53	-0.53	0.00	
2,223.0	16.80	223.20	2,139.1	-398.1	-379.8	550.1	0.29	0.11	-0.95	
2,317.0	16.50	221.20	2,229.1	-418.1	-397.9	577.0	0.69	-0.32	-2.13	
2,412.0	16.00	224.80	2,320.3	-437.5	-416.0	603.6	1.18	-0.53	3.79	
2,507.0	15.10	227.10	2,411.9	-455.2	-434.3	629.0	1.15	-0.95	2.42	
2,601.0	14.50	225.70	2,502.7	-471.8	-451.7	653.0	0.74	-0.64	-1.49	
2,696.0	14.10	227.90	2,594.8	-487.8	-468.8	676.5	0.71	-0.42	2.32	
2,791.0	16.00	231.70	2,686.5	-503.7	-487.7	701.0	2.25	2.00	4.00	
2,885.0	16.30	231.90	2,776.8	-519.9	-508.2	727.0	0.32	0.32	0.21	
2,980.0	15.20	231.10	2,868.3	-535.9	-528.4	752.6	1.18	-1.16	-0.84	
Projection to TD @ 3042.0' MD / 2928.1' TVD										
3,042.0	15.20	231.10	2,928.1	-546.1	-541.0	768.7	0.00	0.00	0.00	

Design Annotations					
Measured Depth (usft)	Vertical Depth (usft)	Local Coordinates		Comment	
		+N/-S (usft)	+E/-W (usft)		
116.0	116.0	0.6	-0.2	Gyro Tie-in @ 116.0' MD / 116.0' TVD	
245.0	244.9	-1.6	-2.2	First MWD Survey @ 245.0' MD / 244.9' TVD	
3,042.0	2,928.1	-546.1	-541.0	Projection to TD @ 3042.0' MD / 2928.1' TVD	

Checked By: _____ Approved By: _____ Date: _____