



Caerus Operating LLC

SURFACE CEMENT POST JOB REPORT

BJU G35 FED #14B-35-496 05-045-24343
S:35 T:4S R:96W Garfield CO

CallSheet #: 80695
Proposal #: 58156



SURFACE CEMENT Post Job Report

Attention: Mr. Cole Walton | (720) 880-6325 | cwalton@caerusoilandgas.com

Caerus Operating LLC

1001 17TH STREET | DENVER, CO 80202

Dear Mr. Cole Walton,

Thank you for the opportunity to provide cementing services on this well. American Cementing strives to achieve complete customer satisfaction. If you have any questions regarding the services or data provided, please contact American Cementing at any time.

Sincerely,

Zen Keith

SME | (307) 757-7178 | zen.keith@americacementing.com

Field Office 28730 US-6, Rifle, CO 81650
Phone: (970) 657-1157

Job Details & Summary

Geometry

Type	Function	OD (in)	ID (in)	Weight (lb/ft)	Thread	Top (ft)	Bottom (ft)	Excess (%)
Casing	Outer	20	19.5	53	n/a	0	100	0
Open Hole	Outer	n/a	14.75	n/a	n/a	100	2500	25
Open Hole	Outer	n/a	14.75	n/a	n/a	2500	3041	0
Casing	Inner	9.625	8.921	36	n/a	0	2981.1	0
DV Tool							899	

Timing

Event	Date/Time
Call Out	3/23/2022 15:18
Depart Facility	3/23/2022 17:45
On Location	3/23/2022 19:00
Rig Up Iron	3/23/2022 19:10
Job Started	3/24/2022 01:45
Job Completed	3/24/2022 16:34
Rig Down Iron	3/24/2022 16:45
Depart Location	3/24/2022 18:50

Equipment / People

Unit Type	Unit	Power Unit	Employee #1
Field Storage Silo	FSS(CTS)-469		
Field Storage Silo	FSS(CTS)-468		
AS Cement Trailer Float	CTF-9299	TRC(TRB)-201	
AS Cement Trailer Float	CTF-9898	TRC(TRB)-202	
Cement Trailer Float	CTF-249	TRC(TRB)-194	Manuelito, Hamilton
Cement Pump Float	CPF-052	TRH-1140	Brady, Shawn
Light Duty Vehicles	LDV-062		Lancaster, Stephen

General Job Information

Metrics	Value
Well Fluid Density	9.2 lb/gal
Well Fluid Type	WBM
Rig Circulation Vol	274 bbls
Rig Circulation Time	0.6 hours
Calculated Displacement	67 bbls
Actual Displacement	67 bbls
Total Spacer to Surface	0 bbls
Total CMT to Surface	5 bbls
Well Topped Out	Yes
Top Out Volume	353 bbls

Job Details

Metrics	Value
Flare Prior to Job	No
Flare Prior to Job	0 units
Flare During Job	No
Flare During Job	0 units
Flare at End of Job	No
Flare at End of Job	0 units
Well Full Prior to Job	Yes
Well Fluid Density Into Well	9.2 lb/gal
Well Fluid Density Out of Well	9.2 lb/gal

Job Details (cont.)

Metrics	Value
BHCT	90 °F
BHST	129 °F

Water Analysis

Metrics	Value	Recommended
Water Source	Upright Rig Tank	
Temperature	51 °F	50-80 °F
pH Level	6	5.5-8.5
Chlorides	300 mg/L	0-3000 mg/L
Total Alkalinity	200	0-1000
Total Hardness	80 mg/L	0-500 mg/L
Carbonates	0 mg/L	0-100 mg/L
Sulfates	0 mg/L	0-1500 mg/L
Potassium	0 mg/L	0-3000 mg/L
Iron	0 mg/L	0-300 mg/L

Job Execution Information

Fluid	Product	Function	Density (lb/gal)	Yield (ft ³ /sk)	Water Rq. (gal/sk)	Water Rq. (gal/bbl)	Volume (sks)	Volume (bbl)
1	Water	Flush	8.34			42.00		40.00
2	Primary	Primary	12.00	2.55	14.95		379.00	172.13
3	Water	DisplacementFinal	8.34			42.00		67.17
4	Water	Flush	8.34			42.00		40.00
5	Plug	Plug Cement	12.50	2.23	12.56		45.00	17.8
6	Water	DisplacementFinal	8.34			42.00		10.00
7	Top-Out	Top-Out 1	12.50	2.23	12.56		738.00	308.00
8	Top-Out	Top-Out 2	15.0	1.29	6.03		196.00	45.00

Job Fluid Details

Fluid	Type	Fluid	Product	Function	Conc.	Uom
2	Primary	Primary	ASTM TYPE I/II	Cement	100.00	%
2	Primary	Primary	A-10	Accelerator	5.00	%BWOB
2	Primary	Primary	A-2	Accelerator	3.00	lb/sk
2	Primary	Primary	A-7P	Accelerator	2.00	lb/sk
2	Primary	Primary	FP-24	Defoamer	0.30	%BWOB
2	Primary	Primary	IntegraSeal POLI	LostCirculation	0.25	lb/sk
2	Primary	Primary	STATIC FREE	Other	0.01	lb/sk
5	Plug	Plug Cement	ASTM TYPE I/II	Cement	100.00	%
5	Plug	Plug Cement	A-10	Accelerator	5.00	%BWOB
5	Plug	Plug Cement	A-2	Accelerator	2.00	lb/sk
5	Plug	Plug Cement	A-7P	Accelerator	2.00	lb/sk
5	Plug	Plug Cement	FP-24	Defoamer	0.30	%BWOB
5	Plug	Plug Cement	IntegraSeal PHENO	LostCirculation	0.50	lb/sk
5	Plug	Plug Cement	IntegraSeal POLI	LostCirculation	0.25	lb/sk
5	Plug	Plug Cement	STATIC FREE	Other	0.01	lb/sk
7	Top-Out	Top-Out 1	ASTM TYPE I/II	Cement	100.00	%
7	Top-Out	Top-Out 1	A-10	Accelerator	5.00	%BWOB
7	Top-Out	Top-Out 1	A-2	Accelerator	3.00	lb/sk
7	Top-Out	Top-Out 1	FP-24	Defoamer	0.30	%BWOB
7	Top-Out	Top-Out 1	IntegraSeal PHENO	LostCirculation	0.50	lb/sk
7	Top-Out	Top-Out 1	IntegraSeal POLI	LostCirculation	0.25	lb/sk
7	Top-Out	Top-Out 1	R-7C	Retarder	0.30	%BWOB
7	Top-Out	Top-Out 1	STATIC FREE	Other	0.01	lb/sk
8	Top-Out	Top-Out 2	ASTM TYPE I/II	Cement	100.00	%

Job Logs

Line	Event	Date (MM/DD/YY)	Time (HH:MM)	Density (lb/gal)	Pump Rate (bpm)	Pump Volume (bbls)	Pipe Pressure (psi)	Comment
1	Callout	3/23/2022	15:18					Crew called for job, On location time 7pm
2	Safety Meeting	3/23/2022	17:30					Journey Management meeting
3	Depart Yard	3/23/2022	17:45					Leave Rifle, CO yard for location
4	Arrive on Location	3/23/2022	19:00					Arrived on location, Still had a lot of casing to run. Got with co rep and discussed job.
5	Safety Meeting	3/23/2022	19:05					Rig up safety meeting
6	Spot Units	3/23/2022	19:10					Spot all equipment for rig up
7	Rig up	3/23/2022	19:20					Rig up all equipment
8	Finish rigging up iron	3/23/2022	20:30					Crew on standby while rig finishes running casing
9	Safety Meeting	3/24/2022	01:45					Pre job meeting with all crews involved with cement job
10	Fill Lines	3/24/2022	02:18	8.34	2.5	10	70	Fill lines for press test
11	Pressure Test	3/24/2022	02:25	8.34	1	10	3600	Press test pump and lines
12	Fresh Flush	3/24/2022	02:29	8.34	5	20	161	Pump 20 bbls fresh water
13	Lead Cement	3/24/2022	02:40	12	5.6	10	298	Start lead cement
14	Lead Cement	3/24/2022	02:45	12	5.6	50	294	50 bbls pumped
15	Lead Cement	3/24/2022	02:54	12	5.6	100	284	100 bbls pumped
16	Lead Cement	3/24/2022	03:04	12	5.6	150	289	150 bbls pumped
17	Lead Cement	3/24/2022	03:10	12	4.8	172	198	172 bbls pumped
18	Drop Top Plug	3/24/2022	03:13					Drop top plug
19	Pump Displacement	3/24/2022	03:16	8.34	4.8	10	187	
20	Pump Displacement	3/24/2022	03:19	8.34	4.8	20	194	20 bbls pumped
21	Pump Displacement	3/24/2022	03:24	8.34	4.3	50	191	50 bbls pumped
22	Land Plug	3/24/2022	03:28	8.34	4.3	67	1191	Landed Plug FCP 191
23	Check Floats	3/24/2022	03:29					.5 bbls back. Floats holding
24	Waiting	3/24/2022	03:30					Stand by for top out
25	Start topout #1	3/24/2022	05:48	12.5				Start topout #1
26	Pump topout cement	3/24/2022	05:53	12.5	2	10	65	Pumped 10 bbls cement
27	Pump topout cement	3/24/2022	06:09	12.5	2.8	50	206	Pumped 50 bbls cement
28	Pump topout cement	3/24/2022	06:28	12.5	2.8	100	170	Pumped 100 bbls cement
29	Pump topout cement	3/24/2022	06:46	12.5	3	150	226	Pumped 150 bbls cement
30	Pump topout cement	3/24/2022	06:58	12.5	4	200	798	Pumped 200 bbls cement
31	Pump topout cement	3/24/2022	07:27	12.5	2.2	250	73	Swapped from pumping through parasite line to stinger
32	Pump topout cement	3/24/2022	07:43	12.5	2.2	308	74	Pumped 308 bbls cement
33	Shutdown	3/24/2022	07:44					Out of top out and lead cement, Call office to get more coming, put plan together to go ahead and pump plugs while waiting on cement
34	Safety Meeting	3/24/2022	10:28					Held safety meeting with crew to discuss job parameters for pumping plug 1 and 2
35	Pressure Test Lines	3/24/2022	11:09	8.34			3000	Press test lines and pump to 3000 psi
36	Start plug #1	3/24/2022	11:14	12.5	2.4	5	97	Pumped first plug 5 bbls tail @ 12.5 ppg
37	Pump Displacement	3/24/2022	11:16	8.34	2.4	10	97	Displace plug #1 with 10 bbls fw
38	Waiting	3/24/2022	11:17					Rig pulling up above to set second plug

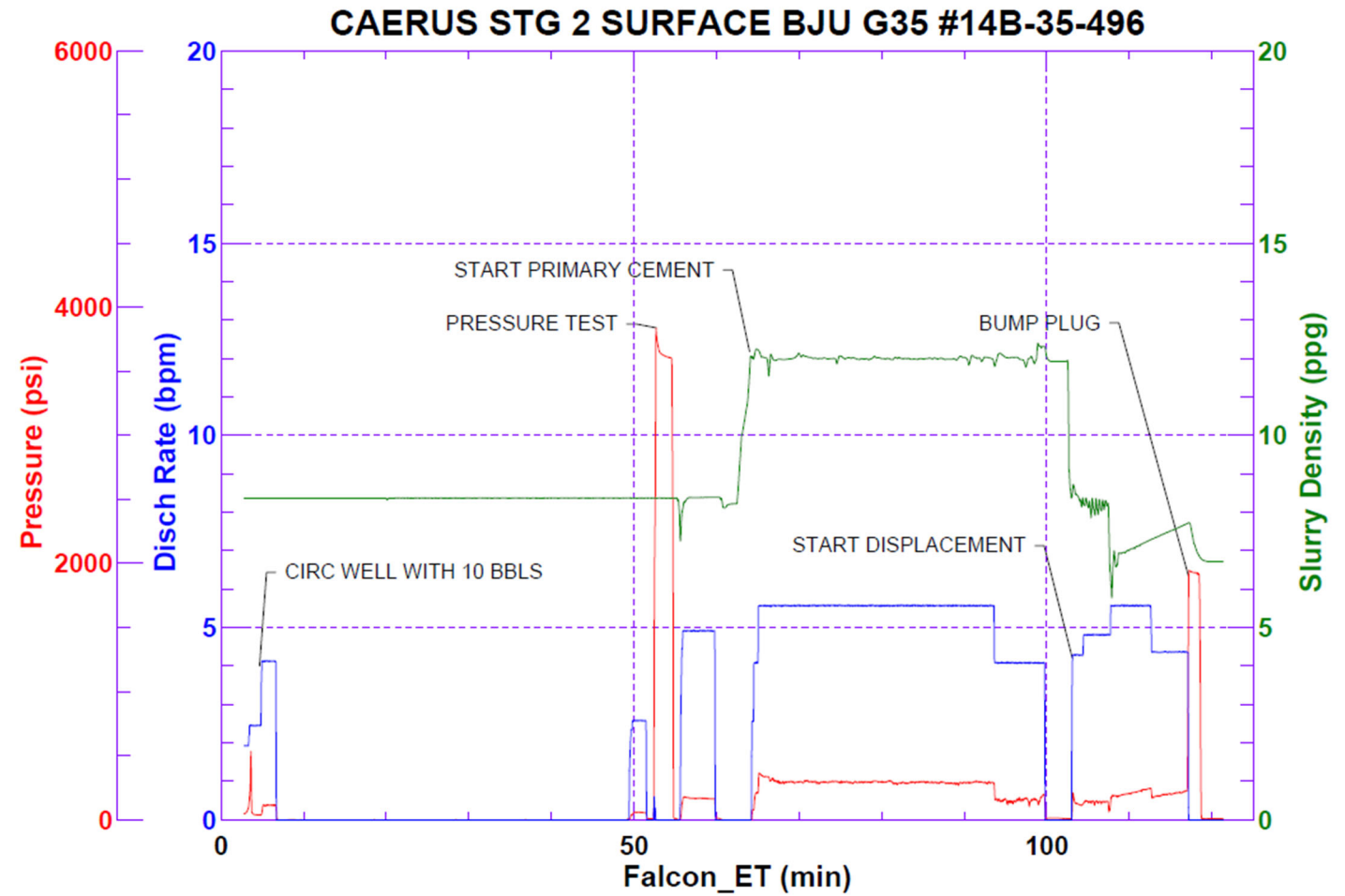


Line	Event	Date (MM/DD/YY)	Time (HH:MM)	Density (lb/gal)	Pump Rate (bpm)	Pump Volume (bbls)	Pipe Pressure (psi)	Comment
39	Pump water	3/24/2022	11:39	8.34	3	5	86	Pump 5 bbls fresh water to be sure pipe is clear
40	Start plug #2	3/24/2022	12:09	12.5	3	12.8	120	Pump plug #2 12.8 bbls tail @ 12.5 ppg
41	Displace plug 2	3/24/2022	12:16	8.34	2	2.8	56	Displace plug #2
42	Shutdown	3/24/2022	12:17					Wait on top out cement
43	Start topout #2	3/24/2022	16:18	15	2.8			Start pumping top out #2
44	Pump topout #2	3/24/2022	16:20	15	2.8	10	130	Pump 10 bbls cement
45	Pump topout #2	3/24/2022	16:24	15	2.8	20	130	Pump 20 bbls cement
46	Pump topout #2	3/24/2022	16:31	15	2.4	40	109	Pump 40 bbls cement
47	Cement to surface	3/24/2022	16:34	15	2.4	45	109	Shutdown. Cement to surface at 45 bbls pumped. 5 bbls of cement to surface
48	Shutdown	3/24/2022	16:34					
49	Rig Down Iron	3/24/2022	16:45					Rig iron down
50	Depart Location	3/24/2022	18:50					Leave location for Rifle Yard

Pump Diagrams

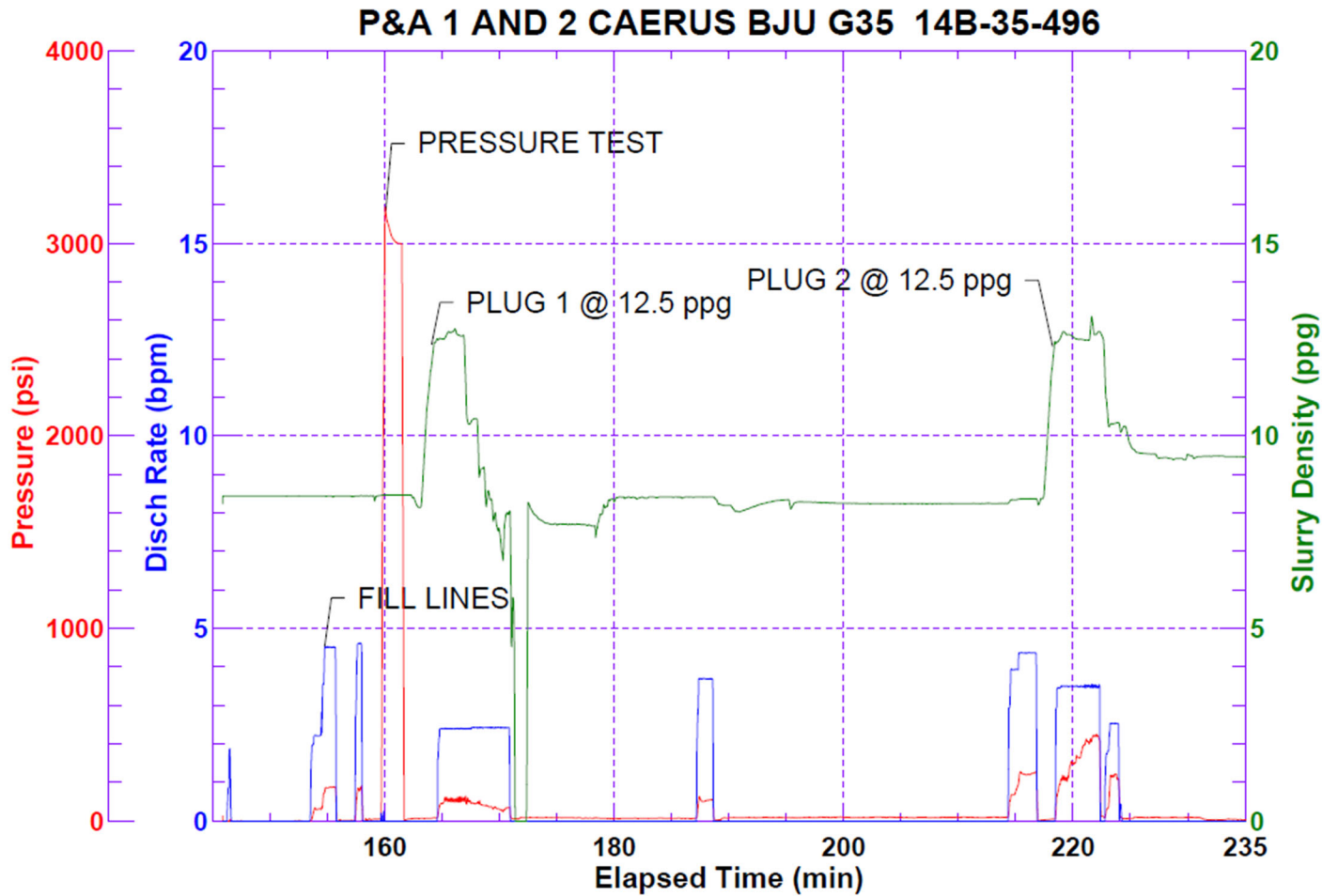


JobMaster Program Version 5.01C1
 Job Number: 80695
 Customer: Caerus
 Well Name: BJU Fed 14B-35



Job Start: Thursday, March 24, 2022

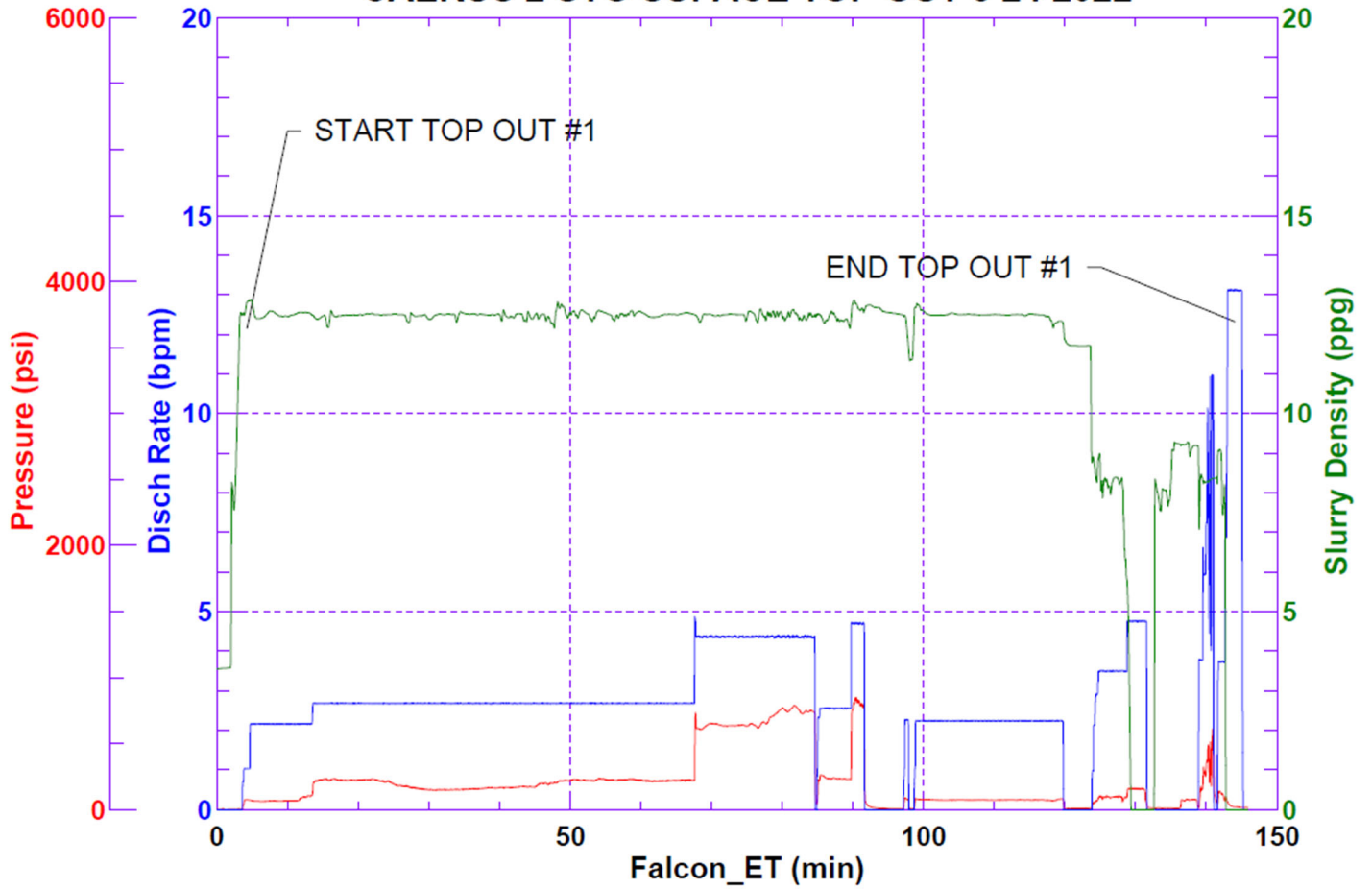
Primary Job



Job Start: Thursday, March 24, 2022

Cement Plugs

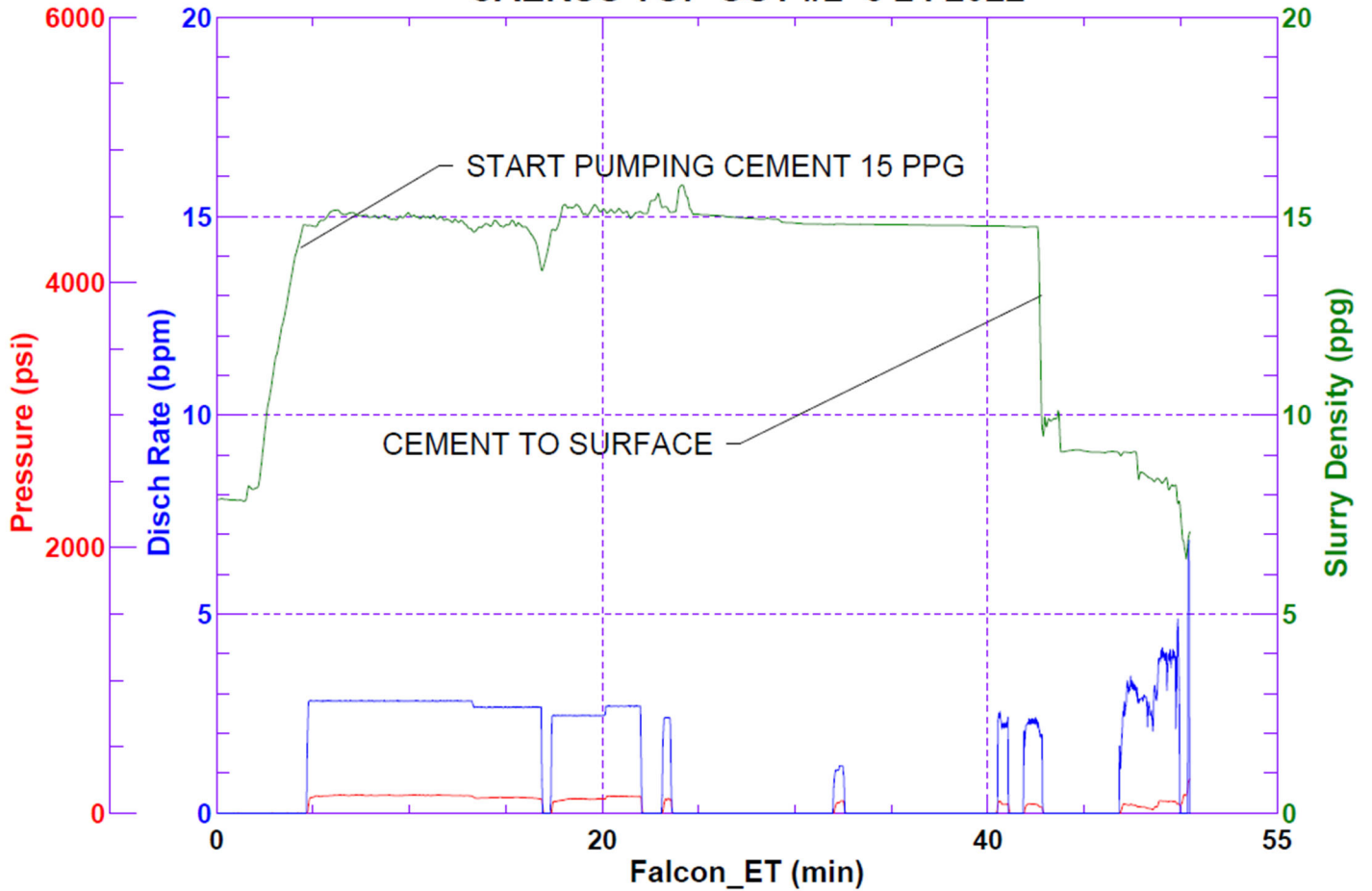
CAERUS 2 STG SUFACE TOP OUT 3 24 2022



Job Start: Thursday, March 24, 2022

Top-Out Chart 1

CAERUS TOP OUT #2 3 24 2022



Job Start: Thursday, March 24, 2022

Top-Out Chart 2