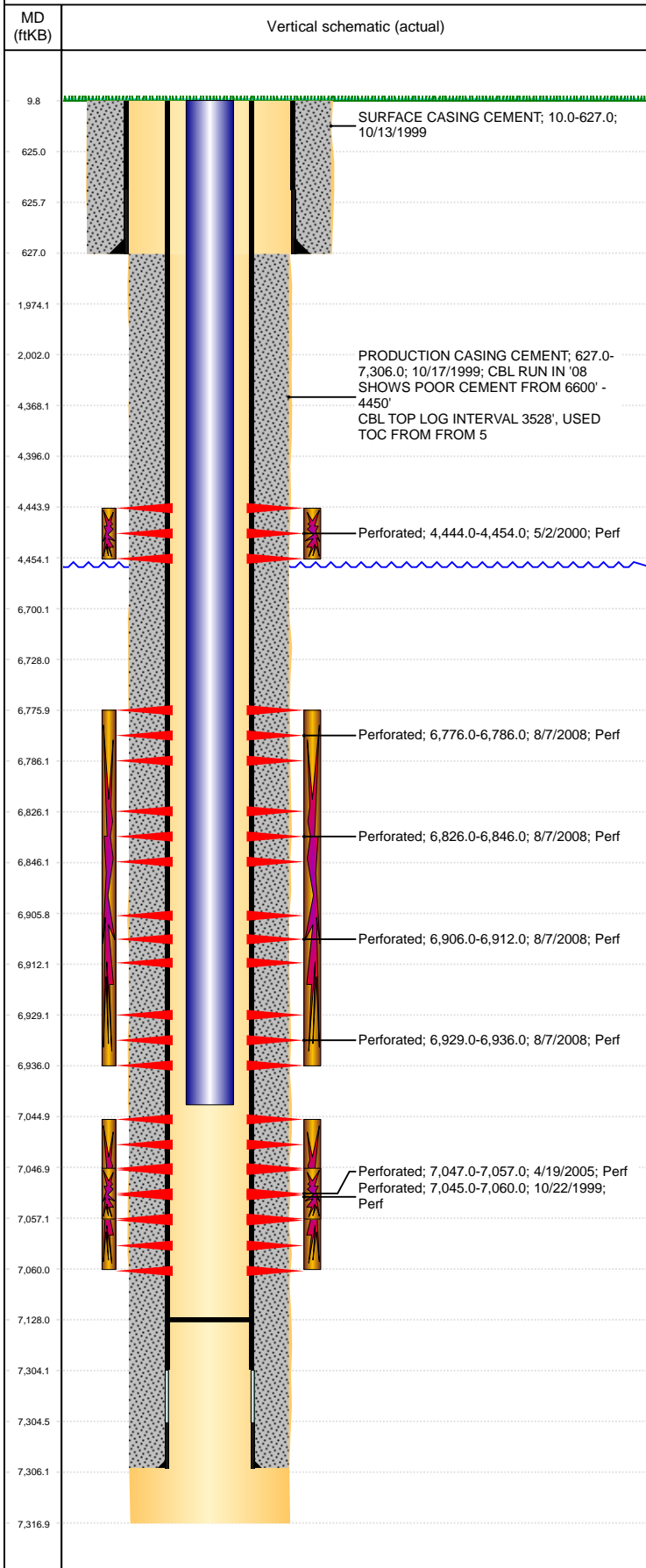


Well Name: FARAMIR FARMS 06-21

VERTICAL, ORIGINAL HOLE, 4/12/2022 10:28:59 AM



Well Header										
API 05-123-19813		Business Unit DJ BASIN			District 15		Well Config VERTICAL			
KB - GL / MSL (ft... 10.00		Spud Date 10/12/1999		P & A Date		Well Production Status PR			SoRT No	
Comment DISCREPANCY: DR RPT TD 7317'; ST RPT TD 7225'. CBL TOP LOG INTERVAL 3528', USED TOC FROM FROM 5. FIELD OPS NOTICE- FLOWLINES ABANDONED PER RULE 1103, RCVD 6/27/17 & 8/17/17.										
Surface Location (Congressional)										
Qtr 3 NE	Qtr 4 NW	Section 6	Twnshp 3	Twnsh... N	Range 64	Rng E/... W	Actual Latitude (°) 40.25944000	Actual Longitude (°) -104.59489000		
Wellbore Sections										
Section Des			Size (in)			Act Top, MD (ftKB)		Act Btm, MD (ftKB)		
SURFACE			12 1/4			10		627		
PRODUCTION			7 7/8			627		7,317		
Casing Strings										
Csg Des		Run Date		OD (in)	Wt/Len (lb/ft)	Grade	Top, MD (ftKB)	MD (ftKB)		
Surface		10/13/1999		8 5/8	24.00		10.0	627.0		
Production		10/17/1999		4 1/2	11.60	N-80	10.0	7,306.0		
Cement										
Des				Start Date		Top (ftKB)		Btm (ftKB)		
SURFACE CASING CEMENT				10/13/1999		10.0		627.0		
PRODUCTION CASING CEMENT				10/17/1999		627.0		7,306.0		
MAGMA FIBER SQUEEZE				8/6/2008						
Zone Statuses										
Zone Name	Status Date	Status	Fluid Type	Job			Prod Method			
CODELL	8/6/2008	SI		RECOMPLETION, 8/5/2008 00:00						
CODELL	10/21/2009	PR		COMMINGLE ZONES, 10/7/2009 00:00						
SUSSEX	5/8/2000	PR		RECOMPLETION, 4/29/2000 00:00						
NIOBRARA	8/21/2008	PR		RECOMPLETION, 8/5/2008 00:00						
NIOBRARA	10/21/2009	PR		COMMINGLE ZONES, 10/7/2009 00:00						
Perforation Data										
Linked Zone		Bnch/Stg	Entered Shot Total	Top (ftKB)		Btm (ftKB)		Date		
SUSSEX, ORIGINAL HOLE		A	40	4,444.00		4,454.00		5/2/2000		
NIOBRARA, ORIGINAL HOLE			20	6,776.00		6,786.00		8/7/2008		
NIOBRARA, ORIGINAL HOLE			B	80	6,826.00		6,846.00		8/7/2008	
NIOBRARA, ORIGINAL HOLE			C	24	6,906.00		6,912.00		8/7/2008	
NIOBRARA, ORIGINAL HOLE		C	28	6,929.00		6,936.00		8/7/2008		
CODELL, ORIGINAL HOLE			60	7,045.00		7,060.00		10/22/1999		
CODELL, ORIGINAL HOLE			40	7,047.00		7,057.00		4/19/2005		
Stimulation Intervals										
Zone			Start Date			Top (ftKB)		Btm (ftKB)		
SUSSEX, ORIGINAL HOLE			5/4/2000			4,444.0		4,454.0		
NIOBRARA, ORIGINAL HOLE			8/17/2008			6,776.0		6,936.0		
CODELL, ORIGINAL HOLE			10/23/1999			7,045.0		7,060.0		
CODELL, ORIGINAL HOLE			4/20/2005			7,047.0		7,057.0		
Other In Hole										
Run Date	Des			Make		OD (in)	Top (ftKB)	Btm (ftKB)		
Logs										
Date		Type				Top, MD (ftKB)		Btm, MD (ftKB)		
10/16/1999		COMPENSATED DENSITY				617.0		7,297.0		
10/16/1999		INDUCTION				617.0		7,317.0		
10/21/1999		CEMENT BOND				3,528.0		7,223.0		
8/5/2008		CBL/CCL/GR				3,500.0		7,108.0		
Plug Back Total Depths										
Date		Type		Com				Depth (ftKB)		
5/2/2000		FILL		CIRCULATE CLEAN				7,177.0		
10/12/2009		FILL		CLEAN OUT TO LAND TUBING				7,128.0		